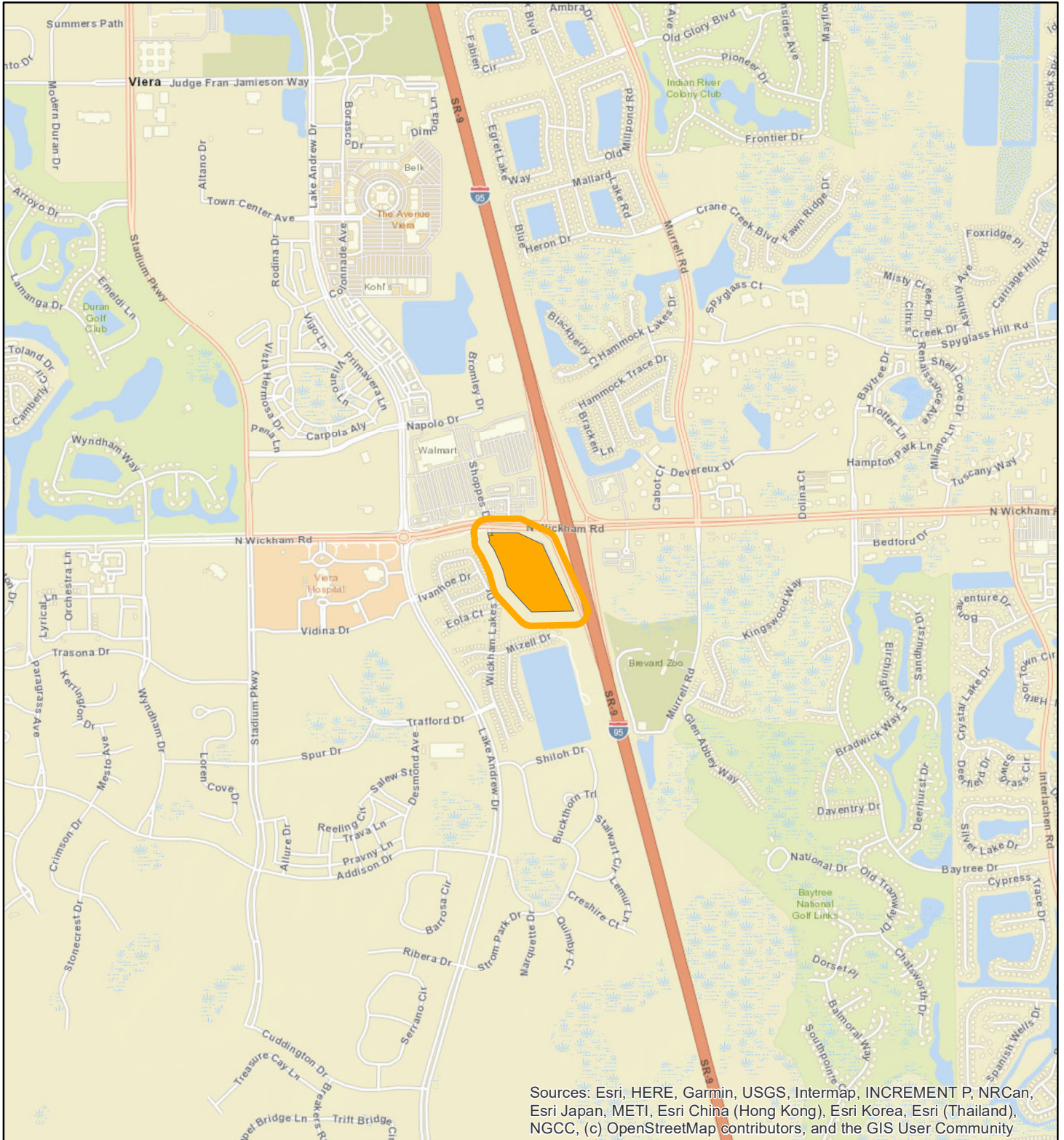


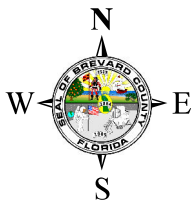
LOCATION MAP

TARGET CORPORATION

26V00019



Sources: Esri, HERE, Garmin, USGS, Intermap, INCREMENT P, NRCan, Esri Japan, METI, Esri China (Hong Kong), Esri Korea, Esri (Thailand), NGCC, (c) OpenStreetMap contributors, and the GIS User Community





1:24,000 or 1 inch = 2,000 feet

Buffer Distance: 200 feet

This map was compiled from recorded documents and does not reflect an actual survey. The Brevard County Board of County Commissioners does not assume responsibility for errors or omissions hereon.

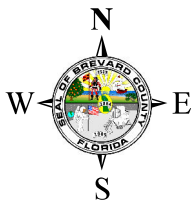
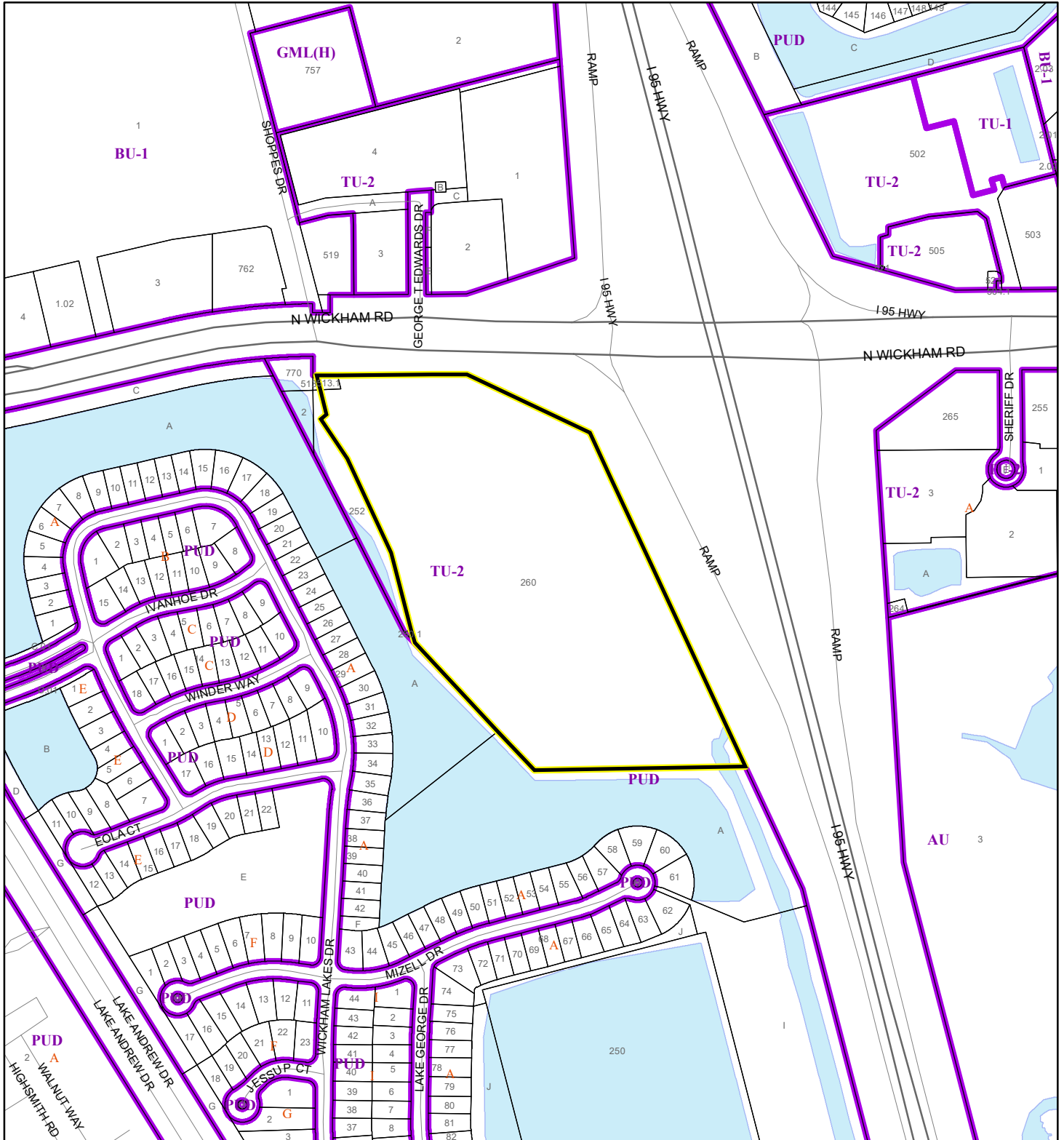
Produced by BoCC - GIS Date: 5/28/2026

-  Buffer
-  Subject Property


ZONING MAP

TARGET CORPORATION

26V00019



1:4,800 or 1 inch = 400 feet

 Subject Property

 Parcels

 Zoning

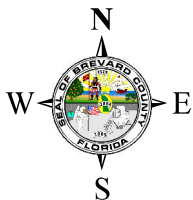
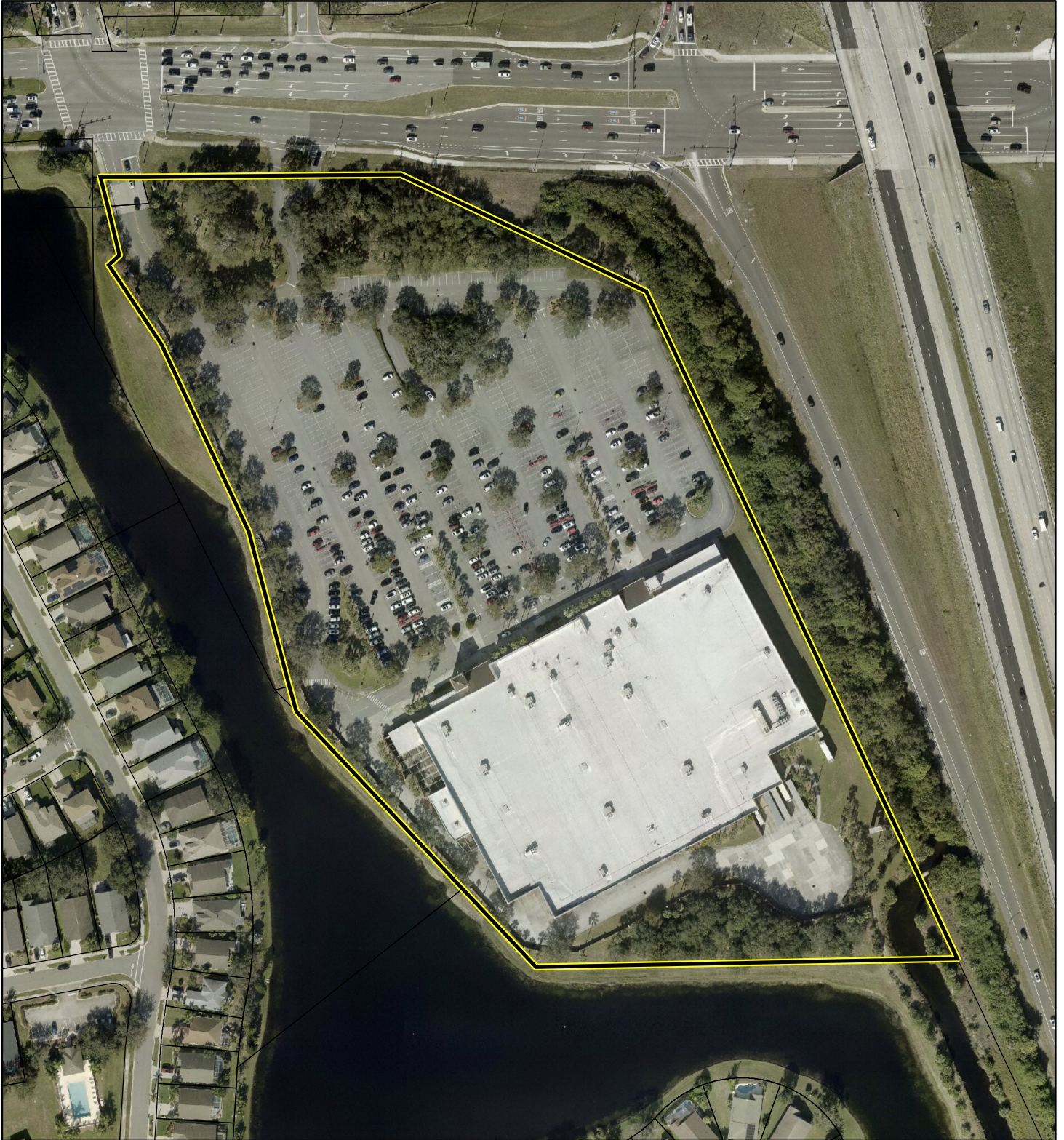
This map was compiled from recorded documents and does not reflect an actual survey. The Brevard County Board of County Commissioners does not assume responsibility for errors or omissions hereon.

Produced by BoCC - GIS Date: 5/28/2026

AERIAL MAP

TARGET CORPORATION

26V00019




1:2,400 or 1 inch = 200 feet

PHOTO YEAR: 2026

This map was compiled from recorded documents and does not reflect an actual survey. The Brevard County Board of County Commissioners does not assume responsibility for errors or omissions hereon.

Produced by BoCC - GIS Date: 5/28/2026

 Subject Property

 Parcels