

NO.	DATE	REVISION

**SLINGERLAND RESIDENCE - 818 HERON ROAD**  
**STORM WATER MANAGEMENT PLAN**

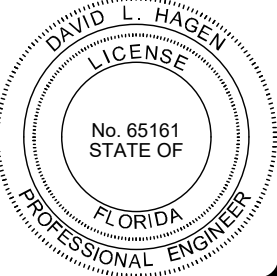
PROJECT NUMBER  
 SLINGERLAND

DRAWN BY:  
 DLH

CHECKED BY:  
 DLH

DATE:  
 MARCH 2026

SHEET:  
**C-2**

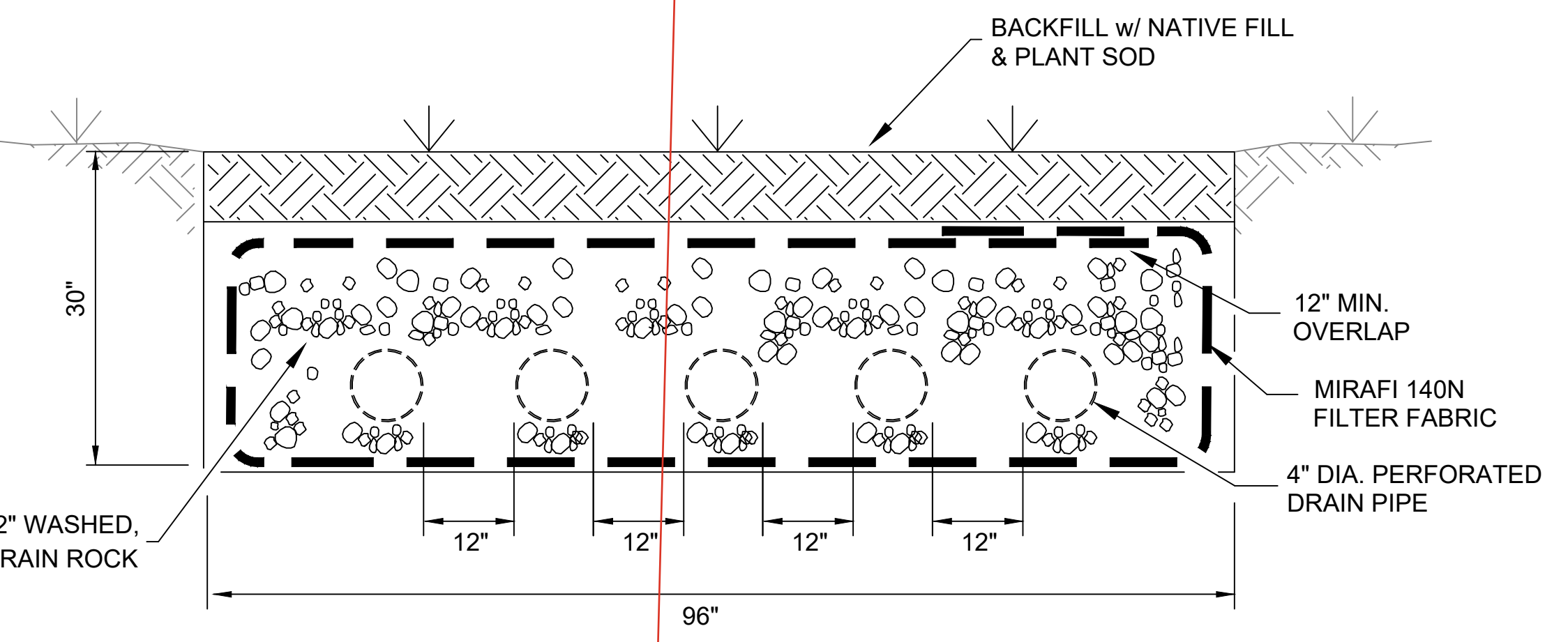
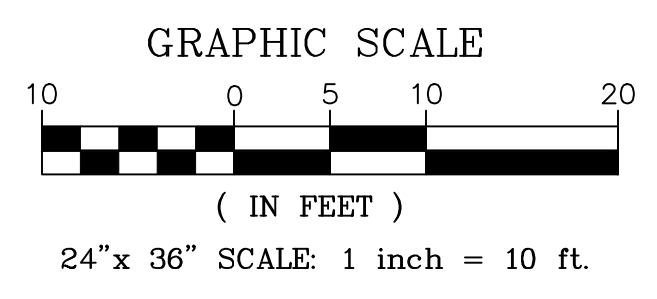


**CONST. 20 LF of BMP INFILTRATION TRENCH (SEE DETAILS)**  
 Consists of (5) 4" Perforated Pipes w/ Drain Rock - 100 LF total - TRENCH VOLUME: 112 cubic feet  
 - Pipe Volume =  $\pi \times (2"/12")^2 \times 100 \approx 9.0$  cubic feet  
 - Rock Volume =  $(20' \times 8.0' \times 2.0' - 9.0 \text{ cubic feet}) \times 0.33 \approx 103$  cubic feet

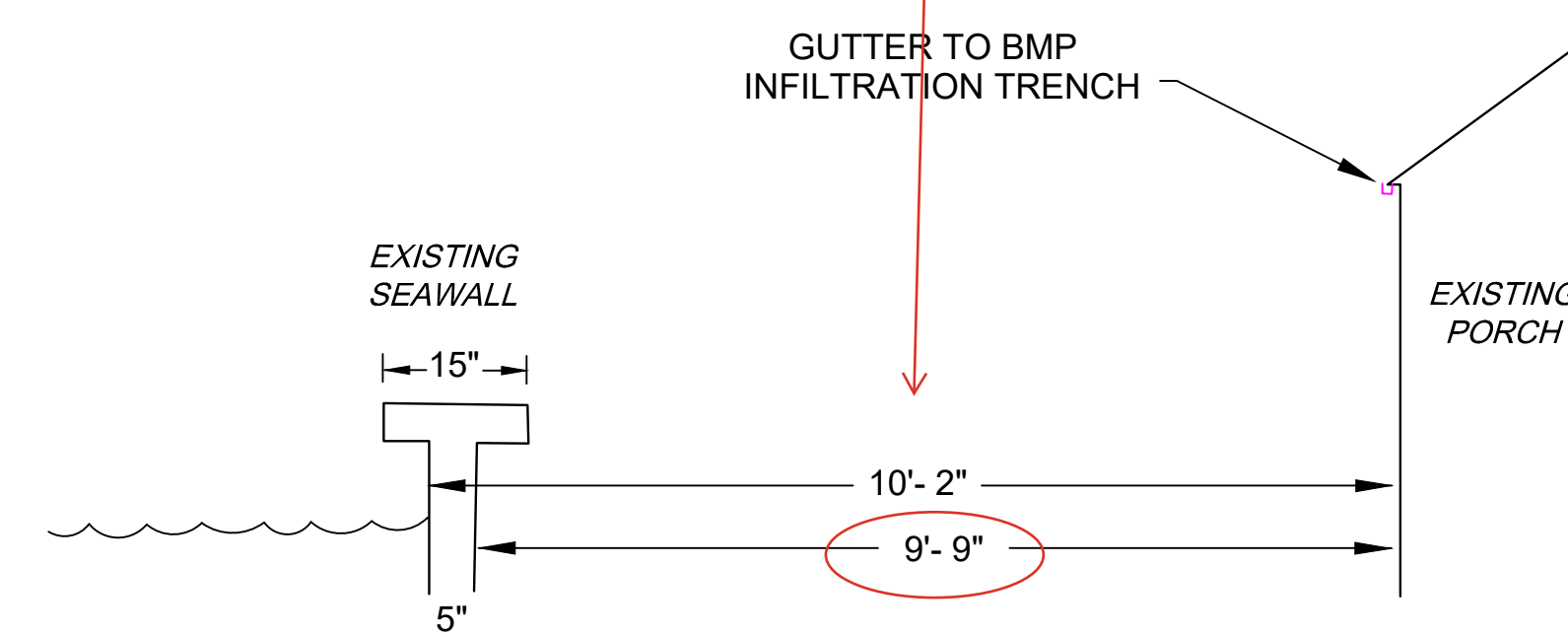
Exact setback noticed below.

**County Requirement - Runoff to 25' Buffer:**  
 Retention Volume Required: 170 cubic feet  
 Retention Volume Provided: 179 cubic feet

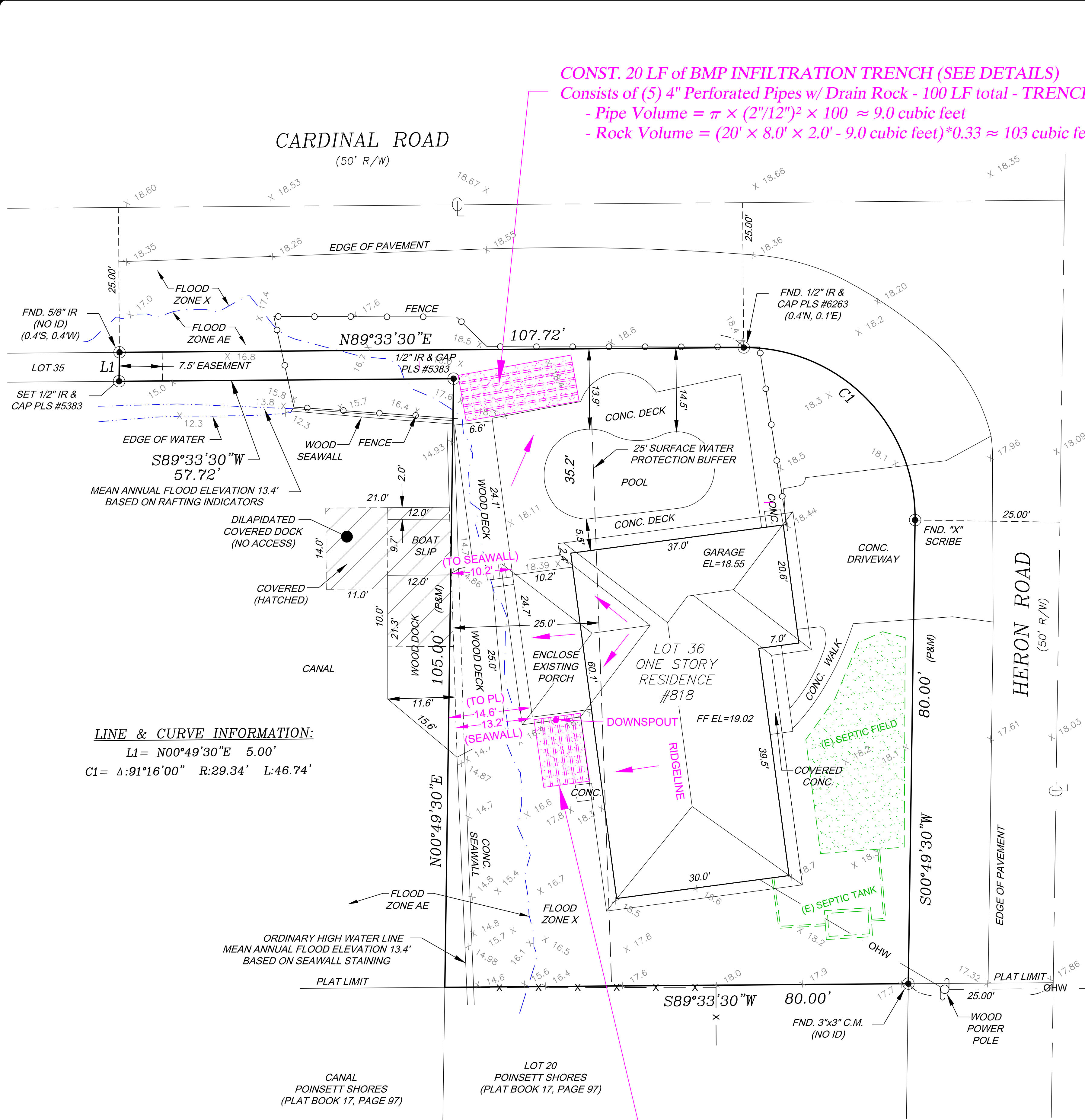
NOTE:  
 CONTRACTOR SHALL CALL FOR COUNTY INSPECTION  
 PRIOR TO BACKFILLING INFILTRATION TRENCH.



**BMP Infiltration Trench Detail**  
 N.T.S.



**Seawall Measurement Detail**  
 N.T.S.



**LINE & CURVE INFORMATION:**  
 L1 = N00°49'30"E 5.00'  
 C1 = Δ:91°16'00" R:29.34' L:46.74'

**CONST. 12 LF of BMP INFILTRATION TRENCH (SEE DETAILS)**  
 Consists of (5) 4" Perforated Pipes w/ Drain Rock - 60 LF total - TRENCH VOLUME: 67 cubic feet  
 - Pipe Volume =  $\pi \times (2"/12")^2 \times 60 \approx 5.5$  cubic feet  
 - Rock Volume =  $(12' \times 8.0' \times 2.0' - 5.5 \text{ cubic feet}) \times 0.33 \approx 61.54$  cubic feet

Asbuilt Survey provided by:  
**AAL LAND SURVEYING SERVICES, Inc.**  
 WITH THE FOLLOWING INFORMATION

NOTE: PLAT CONTAINS  
 MATHEMATICAL ERRORS.

**PROJECT BENCHMARK**  
 NATIONAL GEODETIC SURVEY  
 VERTICAL CONTROL MARK  
 "U 420 1993"  
 EL= 15.07' NAVD 1988  
 EL= 16.46' NGVD 1929

