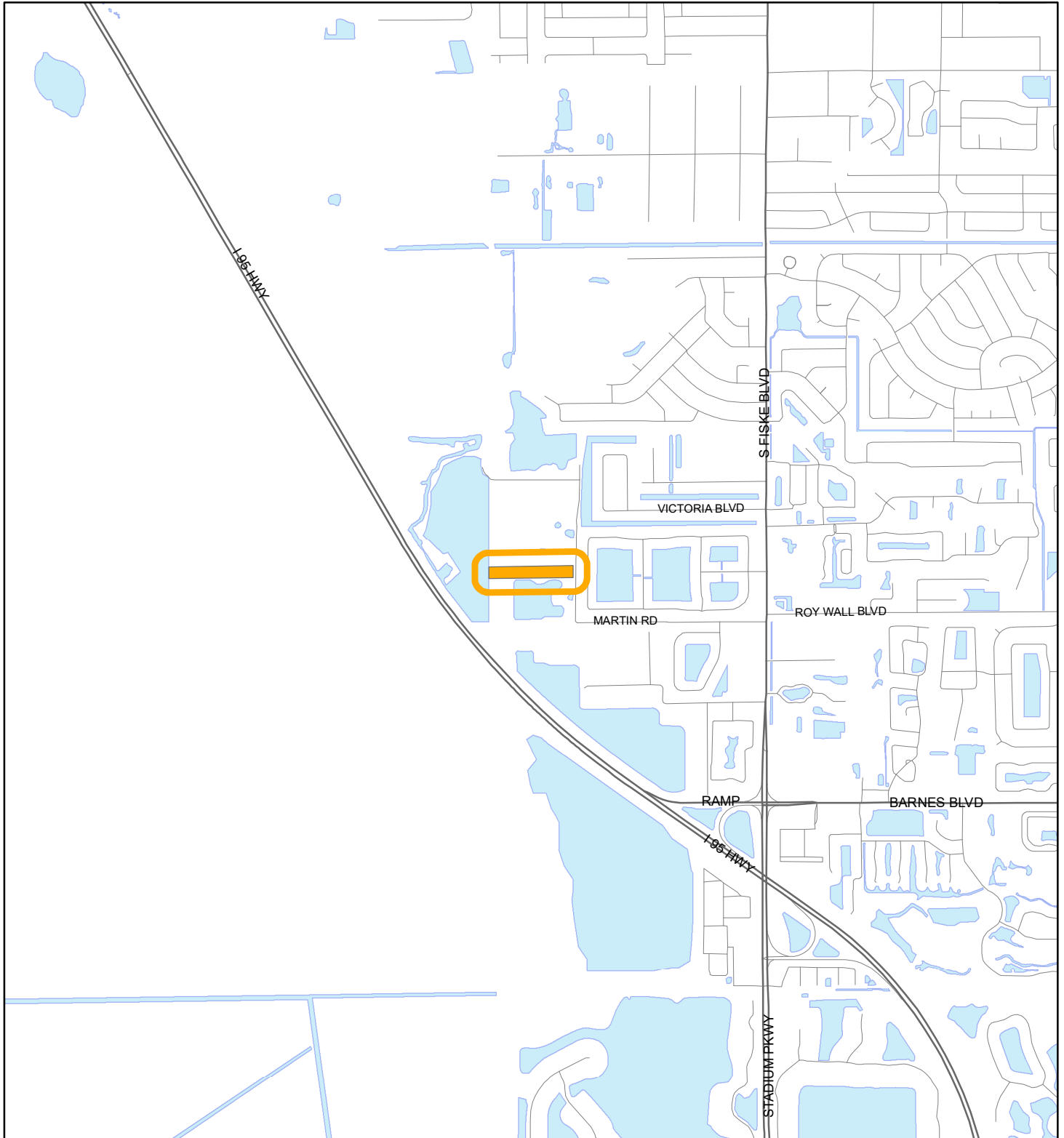


# LOCATION MAP

NOGUEROLES, LUZ

24V00036





1:24,000 or 1 inch = 2,000 feet

Buffer Distance: 200 feet

This map was compiled from recorded documents and does not reflect an actual survey. The Brevard County Board of County Commissioners does not assume responsibility for errors or omissions hereon.

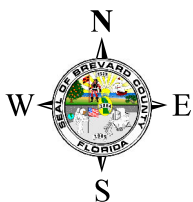
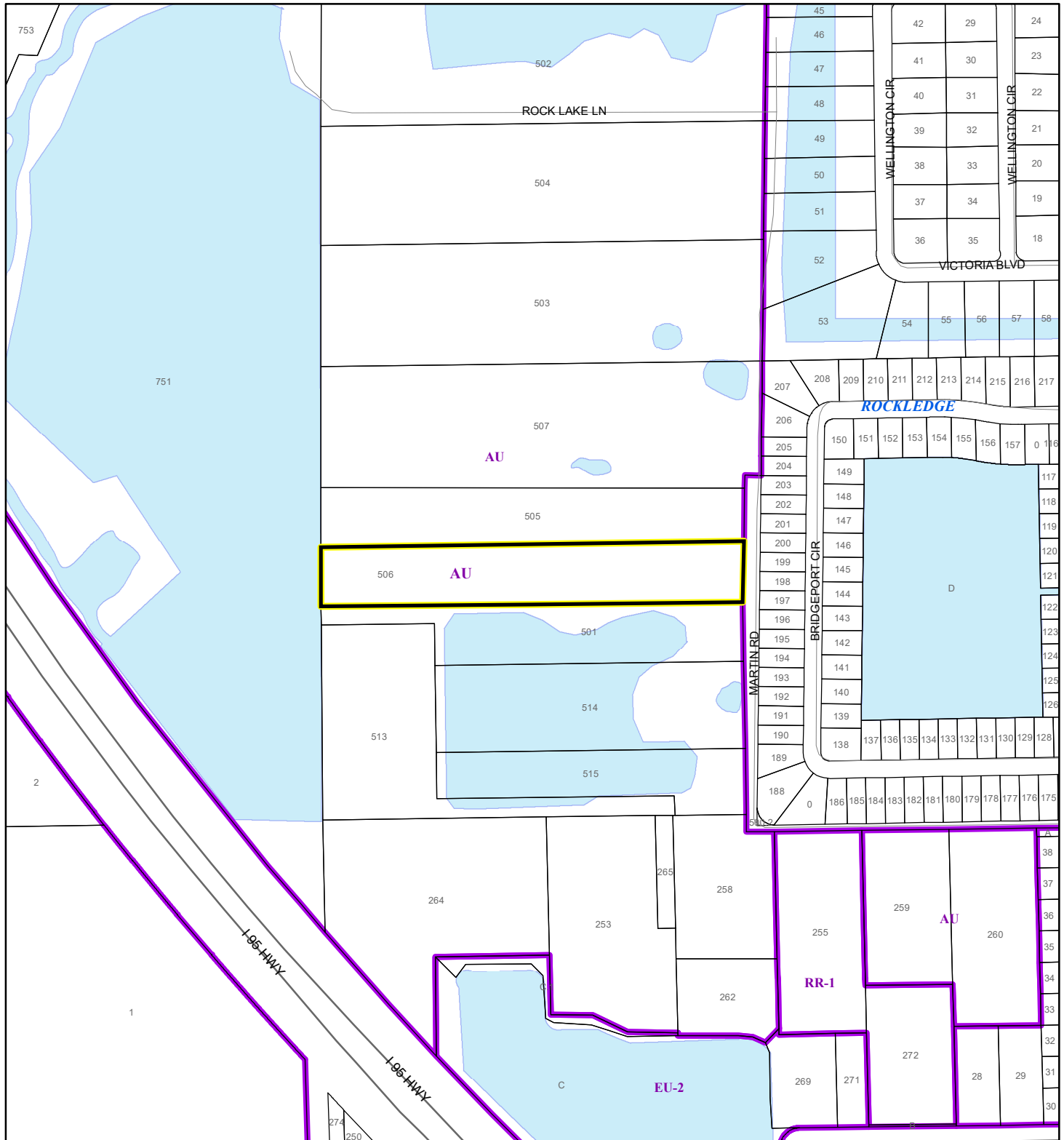
Produced by BoCC - GIS Date: 9/10/2024

 Buffer  
 Subject Property

# ZONING MAP

NOGUEROLES, LUZ


24V00036



1:4,800 or 1 inch = 400 feet

This map was compiled from recorded documents and does not reflect an actual survey. The Brevard County Board of County Commissioners does not assume responsibility for errors or omissions hereon.

Produced by BoCC - GIS Date: 9/10/2024

 Subject Property

 Parcels

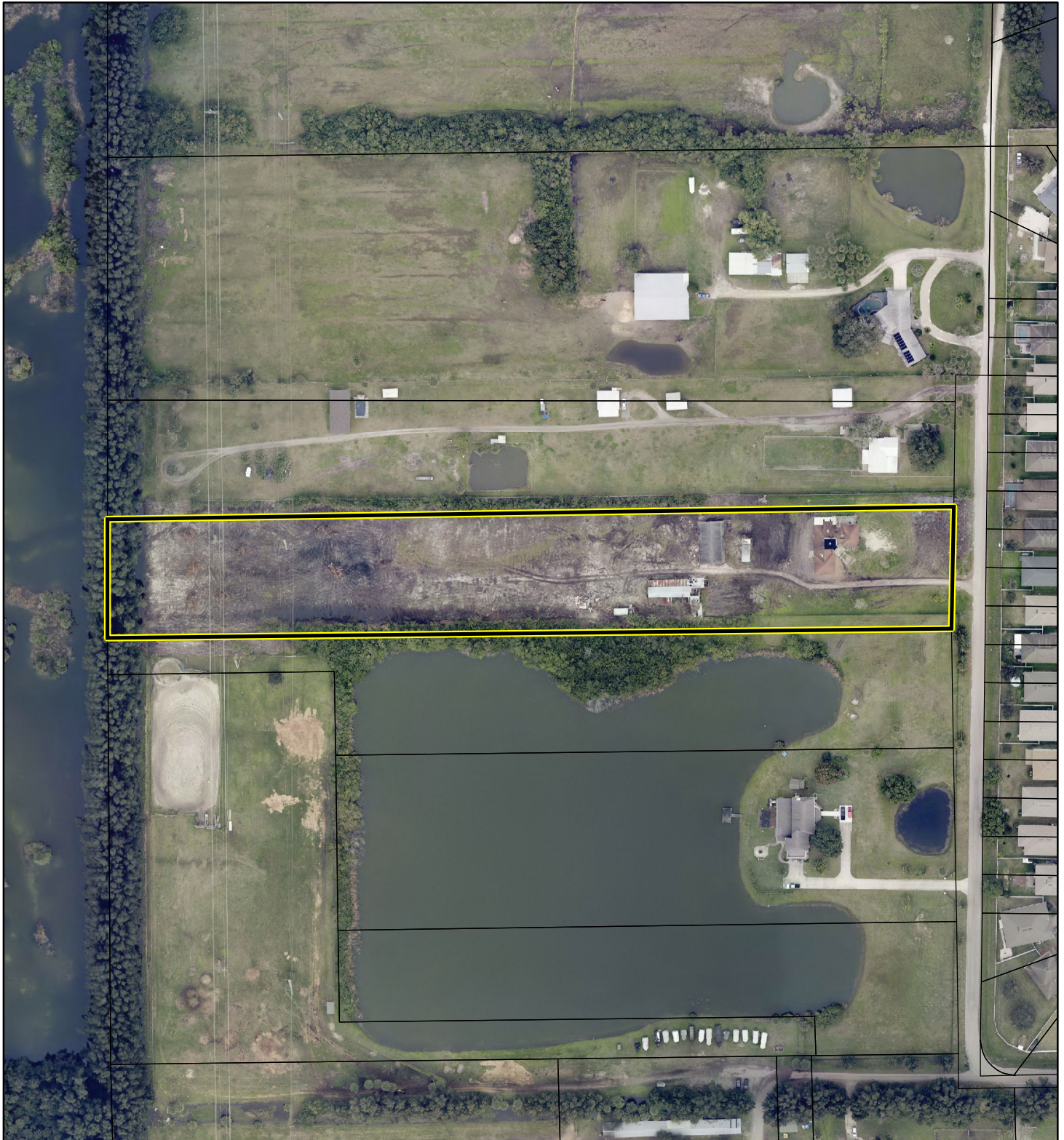
 Zoning



# AERIAL MAP

NOGUEROLES, LUZ

24V00036



1:2,400 or 1 inch = 200 feet

PHOTO YEAR: 2024

This map was compiled from recorded documents and does not reflect an actual survey. The Brevard County Board of County Commissioners does not assume responsibility for errors or omissions hereon.

Produced by BoCC - GIS Date: 9/10/2024

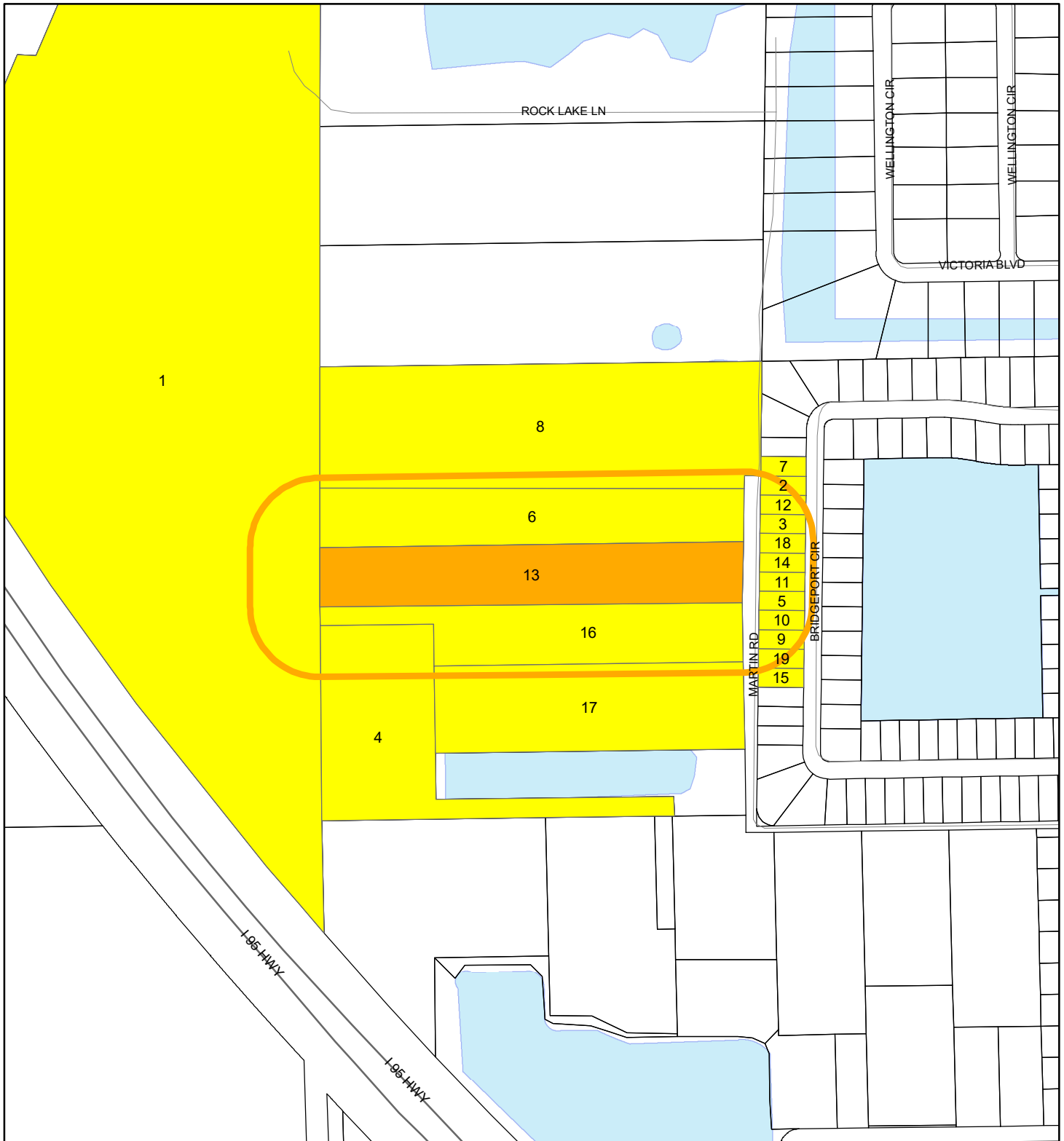
 Subject Property

 Parcels

# RADIUS MAP

NOGUEROLES, LUZ

24V00036



1:4,800 or 1 inch = 400 feet

Buffer Distance: 200 feet

This map was compiled from recorded documents and does not reflect an actual survey. The Brevard County Board of County Commissioners does not assume responsibility for errors or omissions hereon.

Produced by BoCC - GIS Date: 9/10/2024

- Buffer
- Subject Property
- Notify Property
- Parcels