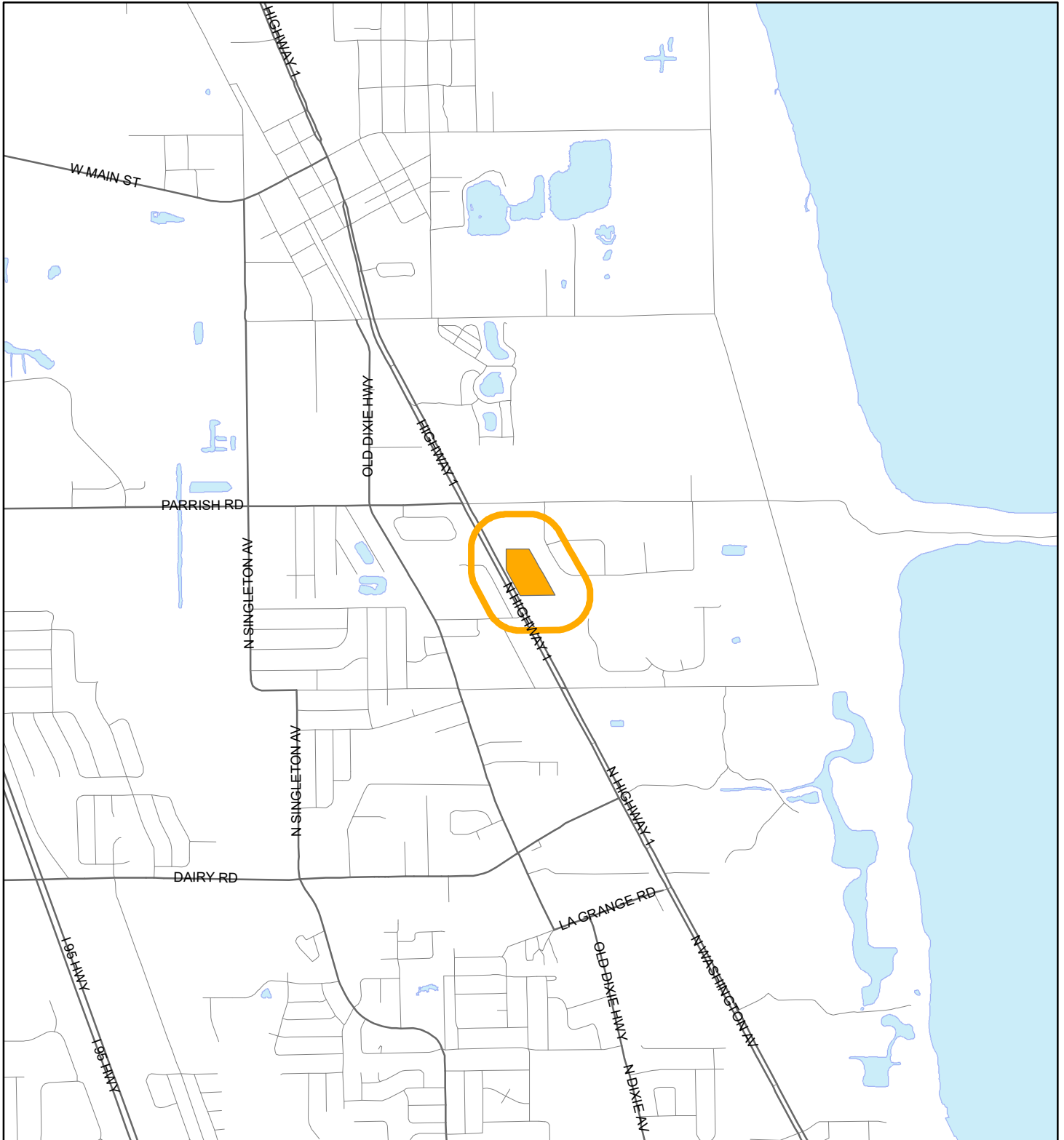


LOCATION MAP

TURNER, PAUL J
24SS00003



1:24,000 or 1 inch = 2,000 feet

Buffer Distance: 500 feet

This map was compiled from recorded documents and does not reflect an actual survey. The Brevard County Board of County Commissioners does not assume responsibility for errors or omissions hereon.

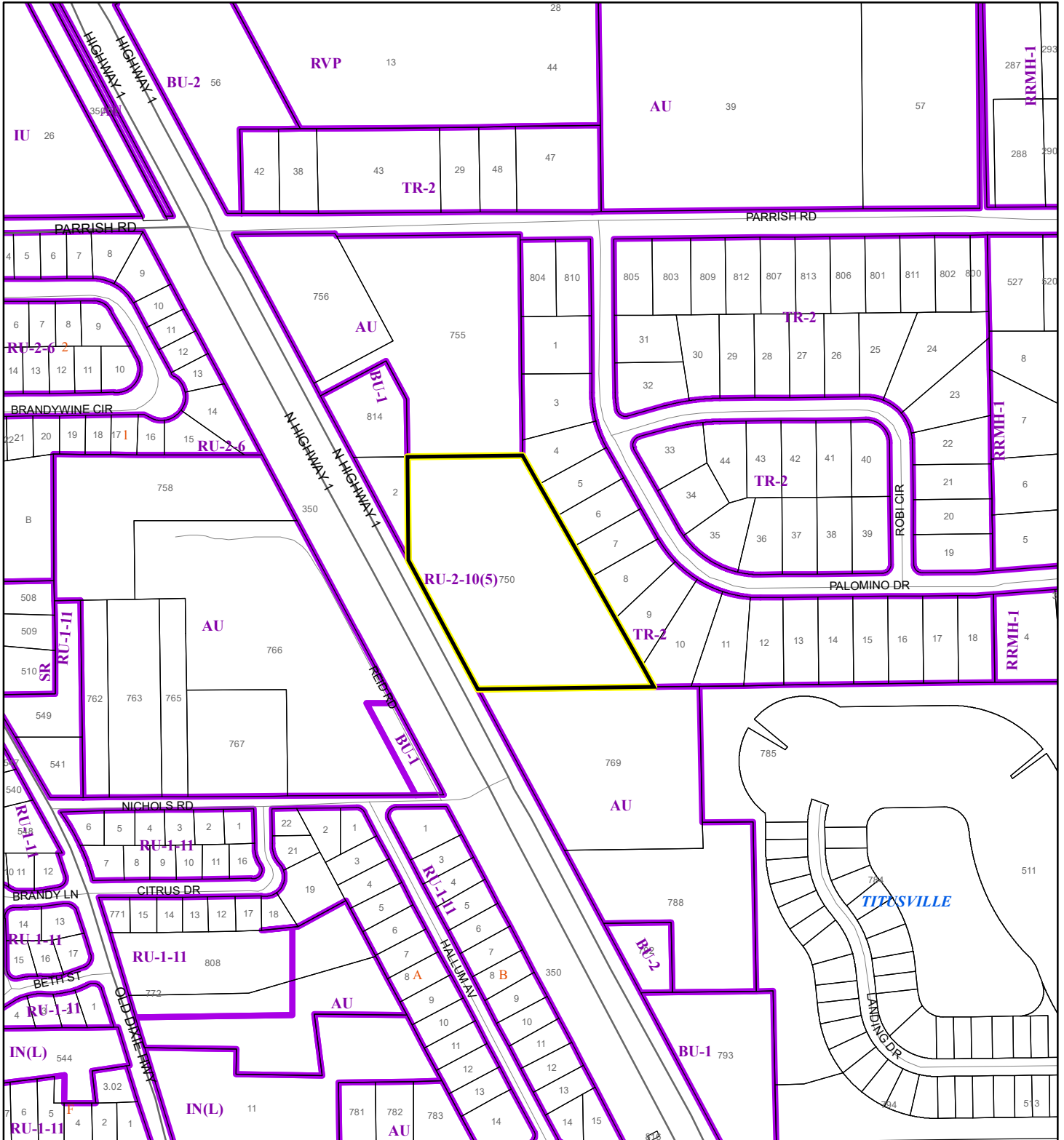
Produced by BoCC - GIS Date: 4/2/2024

-  Buffer
-  Subject Property


ZONING MAP

TURNER, PAUL J

24SS00003



1:4,800 or 1 inch = 400 feet

 Subject Property

 Parcels

 Zoning

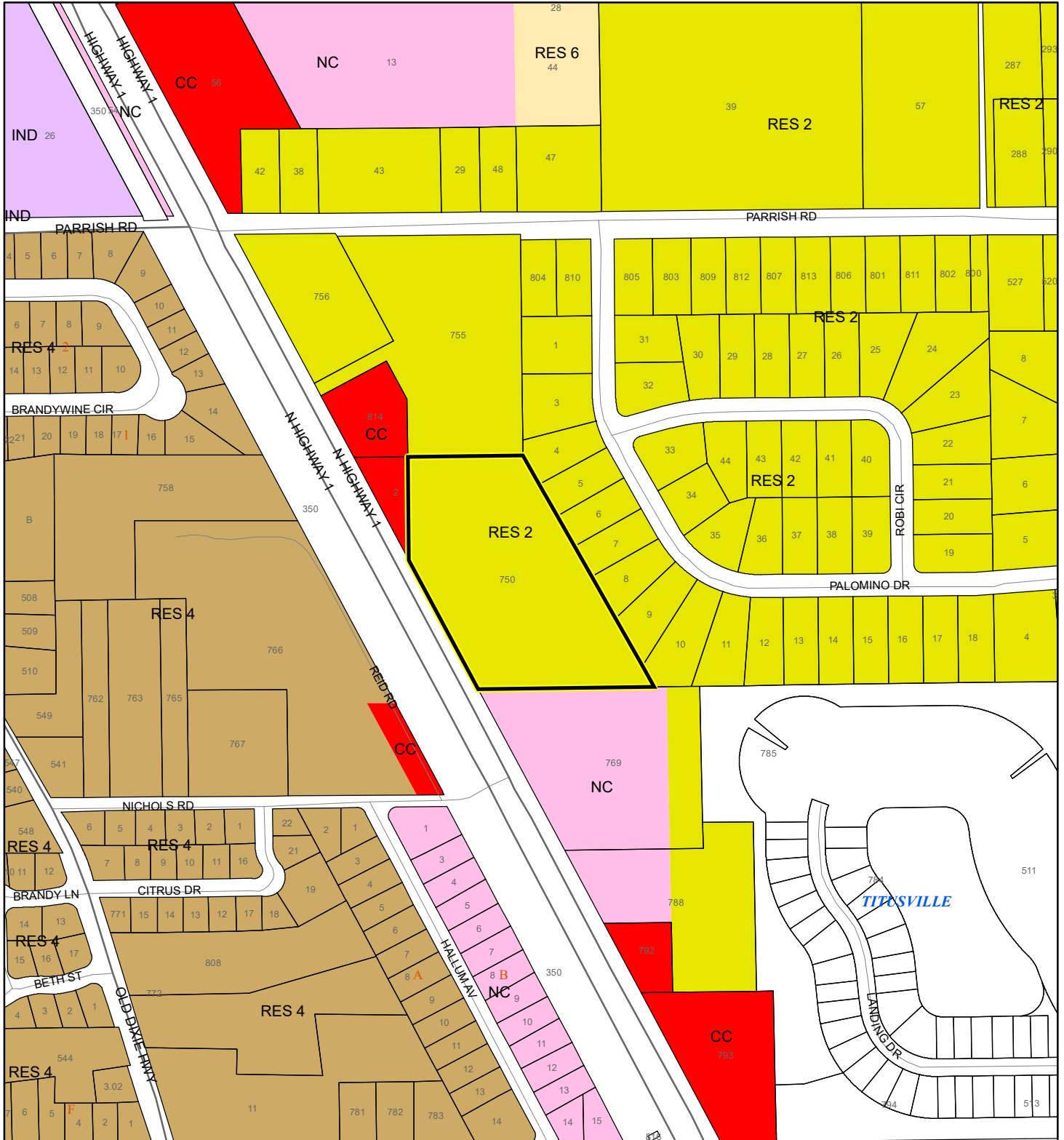
This map was compiled from recorded documents and does not reflect an actual survey. The Brevard County Board of County Commissioners does not assume responsibility for errors or omissions hereon.

Produced by BoCC - GIS Date: 4/2/2024

FUTURE LAND USE MAP

TURNER, PAUL J

24SS00003



1:4,800 or 1 inch = 400 feet

- Subject Property
- Parcels

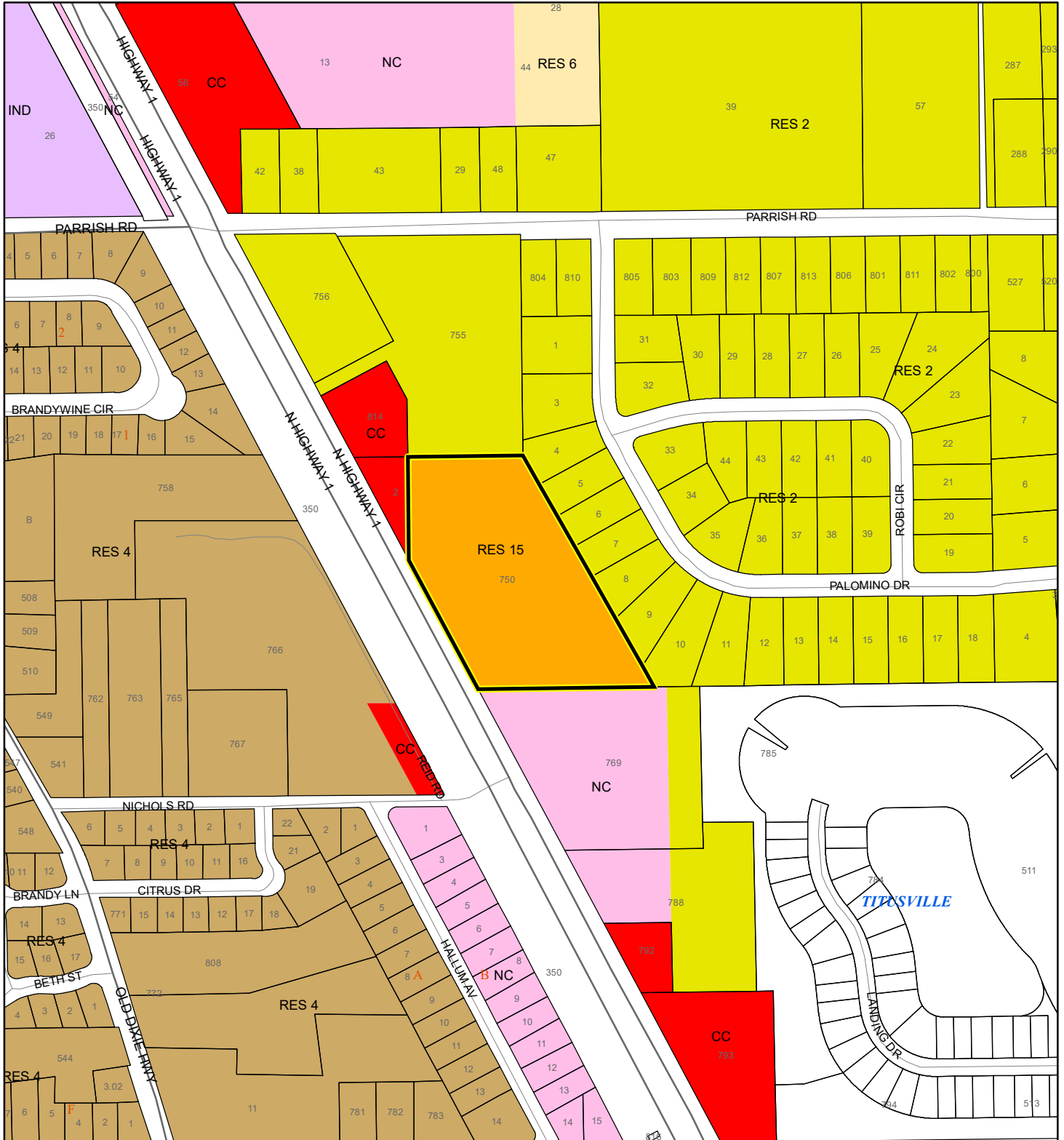
This map was compiled from recorded documents and does not reflect an actual survey. The Brevard County Board of County Commissioners does not assume responsibility for errors or omissions hereon.

Produced by BoCC - GIS Date: 4/2/2024

PROPOSED FUTURE LAND USE MAP

TURNER, PAUL J

24SS00003



1:4,800 or 1 inch = 400 feet

- Subject Property
- Parcels

This map was compiled from recorded documents and does not reflect an actual survey. The Brevard County Board of County Commissioners does not assume responsibility for errors or omissions hereon.

Produced by BoCC - GIS Date: 4/2/2024

AERIAL MAP

TURNER, PAUL J

24SS00003




1:4,800 or 1 inch = 400 feet

PHOTO YEAR: 2023

This map was compiled from recorded documents and does not reflect an actual survey. The Brevard County Board of County Commissioners does not assume responsibility for errors or omissions hereon.

Produced by BoCC - GIS Date: 4/2/2024

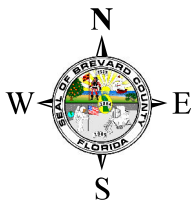
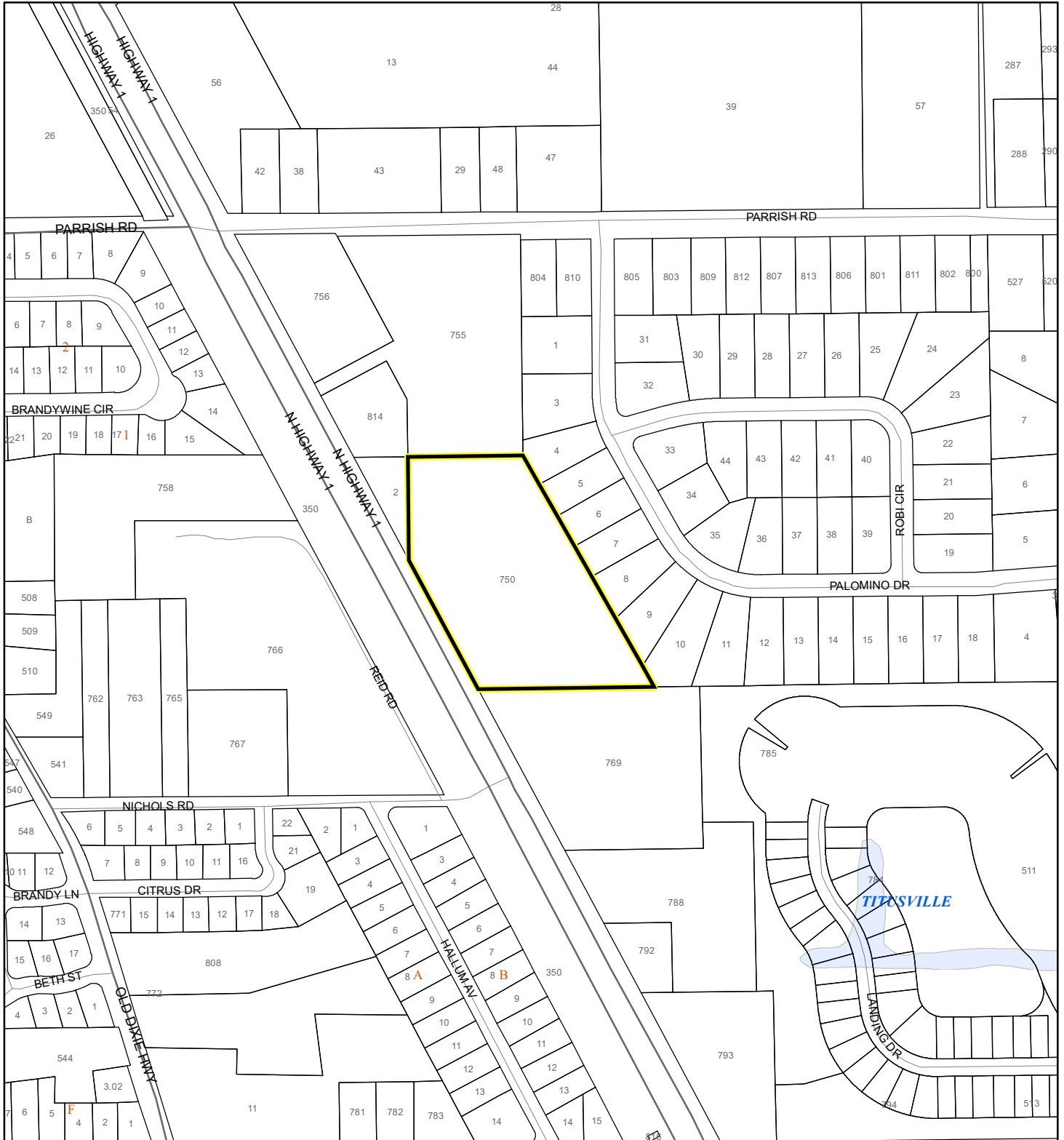
 Subject Property

 Parcels

NWI WETLANDS MAP

TURNER, PAUL J

24SS00003






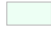

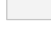




1:4,800 or 1 inch = 400 feet

This map was compiled from recorded documents and does not reflect an actual survey. The Brevard County Board of County Commissioners does not assume responsibility for errors or omissions hereon.

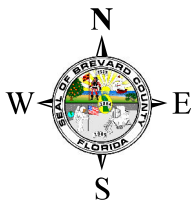
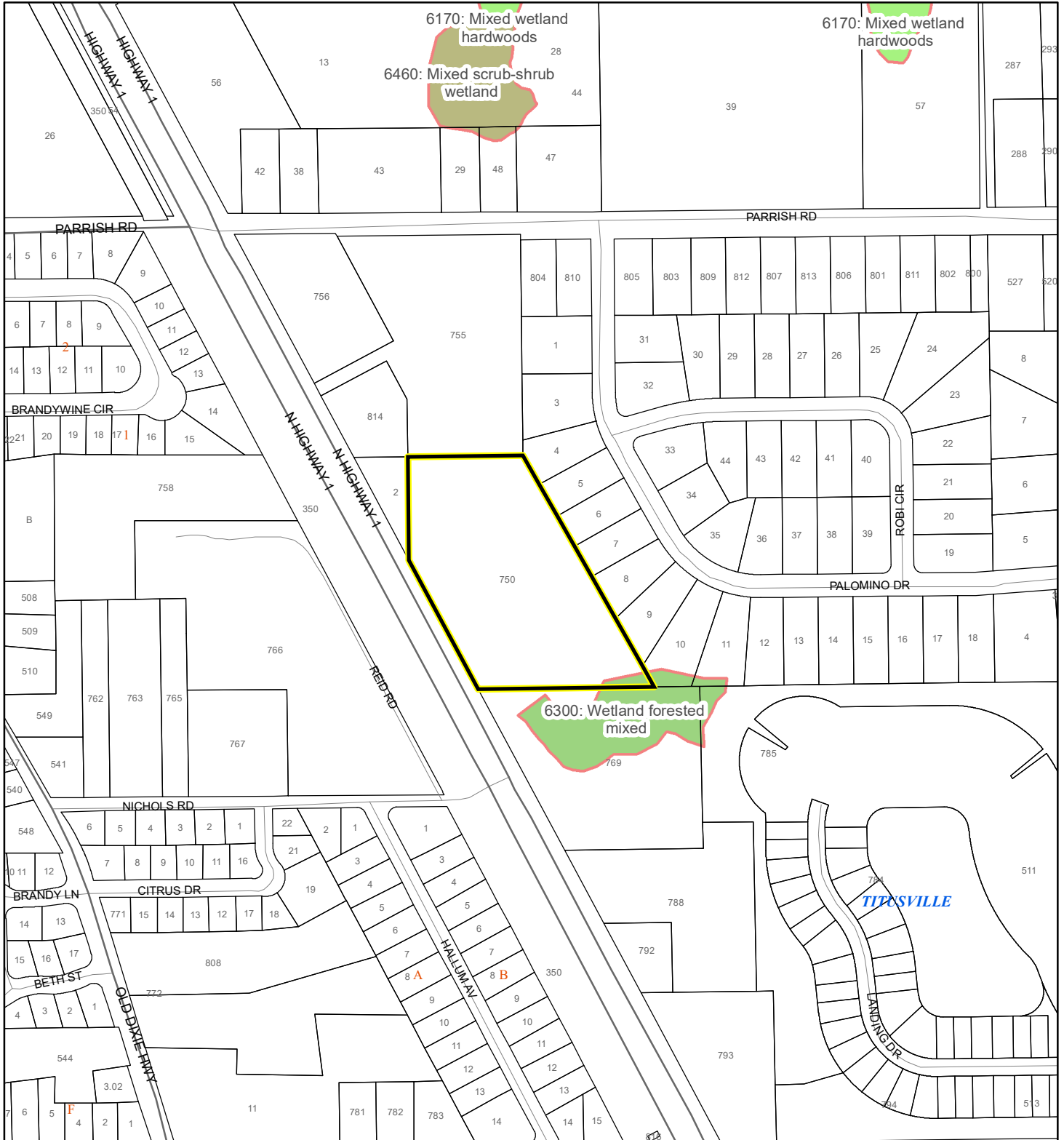
Produced by BoCC - GIS Date: 4/2/2024

National Wetlands Inventory (NWI)

- | | |
|--|--|
|  Estuarine and Marine Deepwater |  Freshwater Pond |
|  Estuarine and Marine Wetland |  Lake |
|  Freshwater Emergent Wetland |  Other |
|  Freshwater Forested/Shrub Wetland |  Riverine |
| |  Subject Property |
| |  Parcels |

SJRWMD FLUCCS WETLANDS - 6000 Series MAP

TURNER, PAUL J
24SS00003



1:4,800 or 1 inch = 400 feet

This map was compiled from recorded documents and does not reflect an actual survey. The Brevard County Board of County Commissioners does not assume responsibility for errors or omissions hereon.

Produced by BoCC - GIS Date: 4/2/2024

SJRWMD FLUCCS WETLANDS

- Wetland Hardwood Forests - Series 6100
- Wetland Coniferous Forest - Series 6200
- Wetland Forested Mixed - Series 6300
- Vegetated Non-Forested Wetlands - Series 6400
- Non-Vegetated Wetland - Series 6500

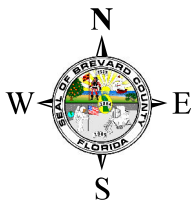
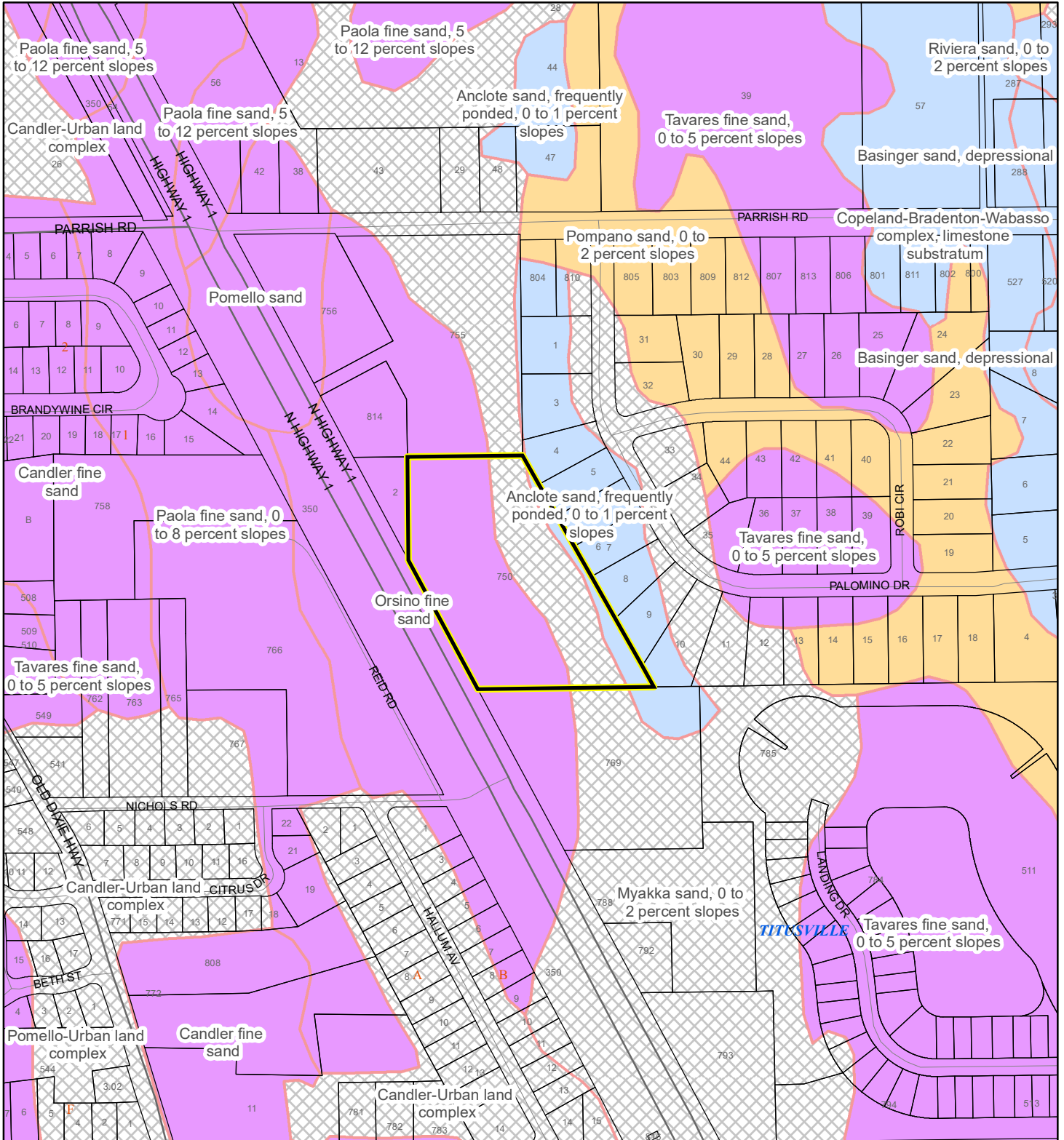
Subject Property

Parcels

USDA SCSSS SOILS MAP

TURNER, PAUL J

24SS00003



1:4,800 or 1 inch = 400 feet

This map was compiled from recorded documents and does not reflect an actual survey. The Brevard County Board of County Commissioners does not assume responsibility for errors or omissions hereon.

Produced by BoCC - GIS Date: 4/2/2024

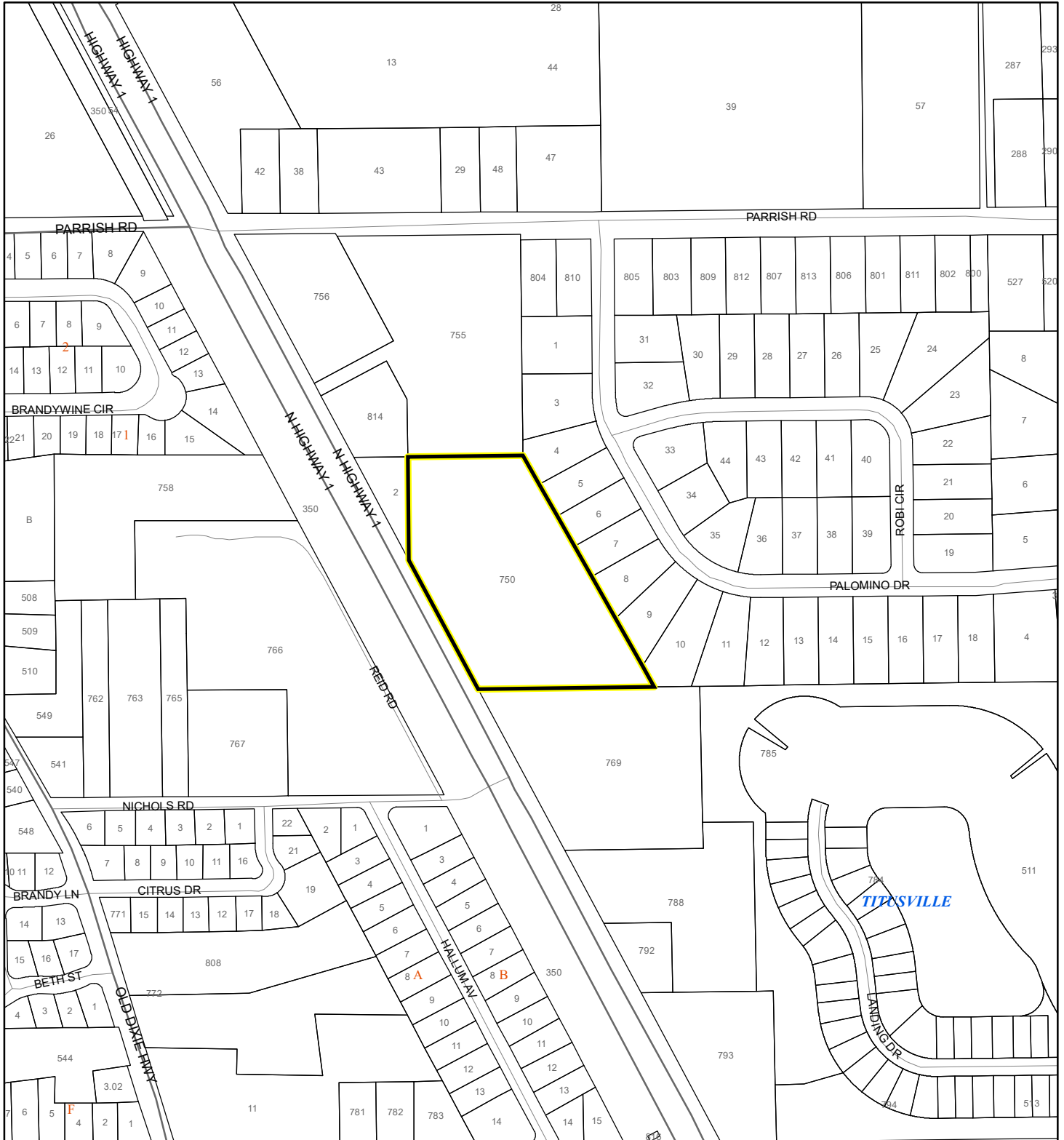
USDA SCSSS Soils

- Aquifer and Hydric
- Aquifer
- Hydric
- None
- Subject Property
- Parcels

FEMA FLOOD ZONES MAP

TURNER, PAUL J

24SS00003



1:4,800 or 1 inch = 400 feet

This map was compiled from recorded documents and does not reflect an actual survey. The Brevard County Board of County Commissioners does not assume responsibility for errors or omissions hereon.

Produced by BoCC - GIS Date: 4/2/2024

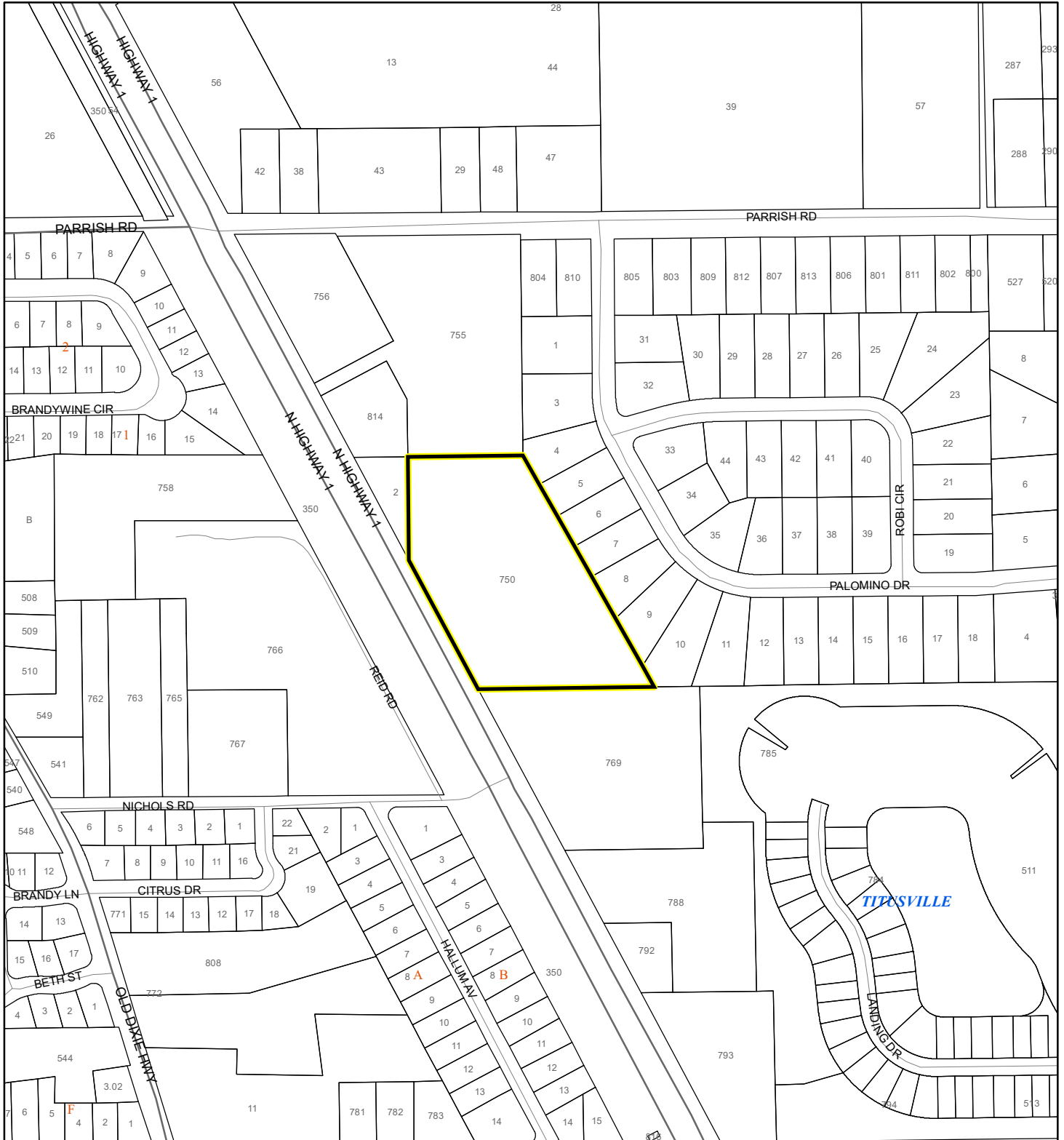
FEMA Flood Zones

- | | | |
|--|--|---|
|  A |  AO |  X |
|  AE |  Open Water | |
|  AH |  VE | |
|  Subject Property |  Parcels | |

COASTAL HIGH HAZARD AREA MAP

TURNER, PAUL J


24SS00003



1:4,800 or 1 inch = 400 feet


This map was compiled from recorded documents and does not reflect an actual survey. The Brevard County Board of County Commissioners does not assume responsibility for errors or omissions hereon.

Produced by BoCC - GIS Date: 4/2/2024

 Subject Property

 Parcels

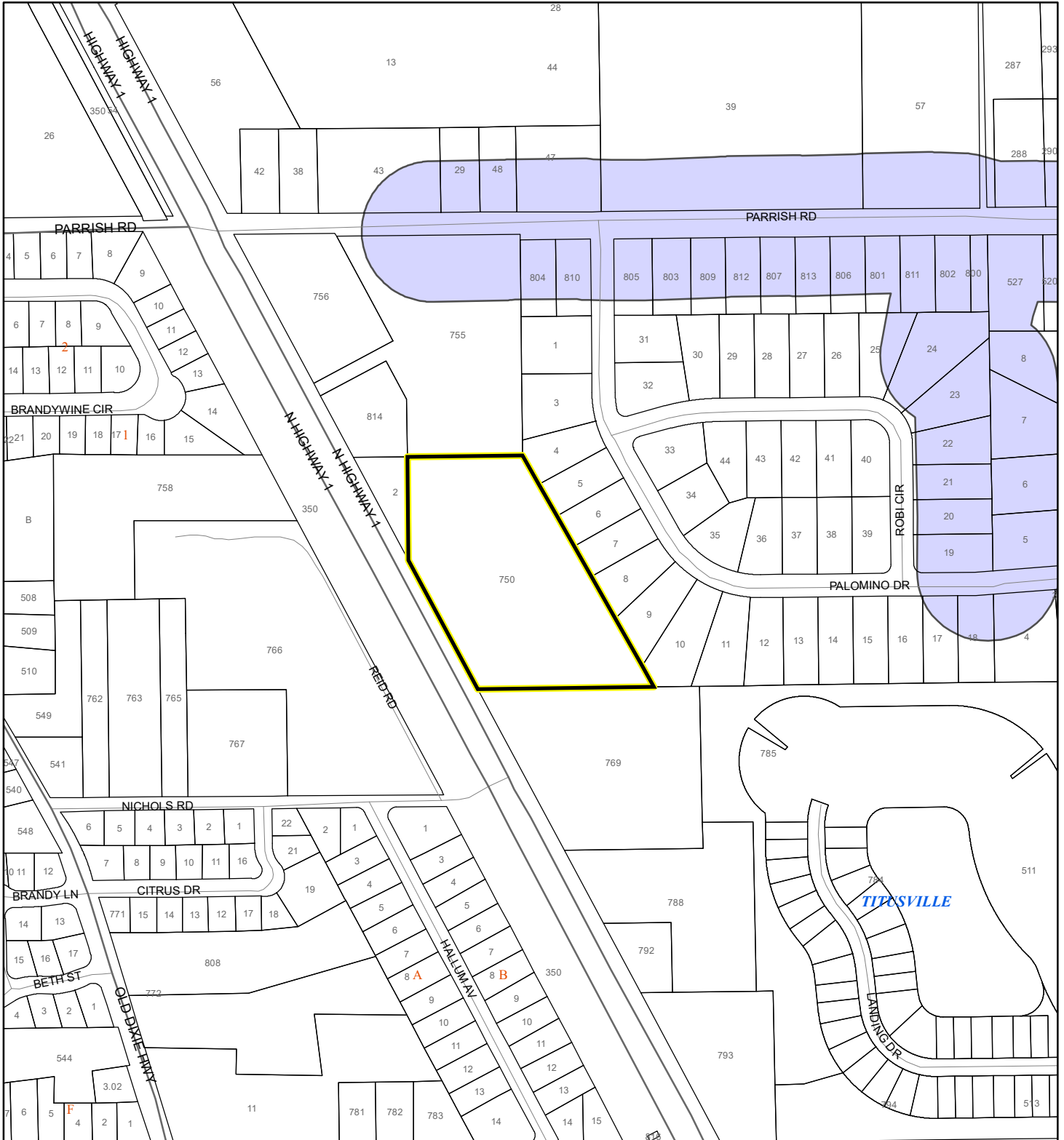
Coastal High Hazard Area

 SurgeZoneCat1

INDIAN RIVER LAGOON SEPTIC OVERLAY MAP

TURNER, PAUL J

24SS00003



1:4,800 or 1 inch = 400 feet

This map was compiled from recorded documents and does not reflect an actual survey. The Brevard County Board of County Commissioners does not assume responsibility for errors or omissions hereon.

Produced by BoCC - GIS Date: 4/2/2024

 Subject Property

 Parcels

Septic Overlay

 40 Meters

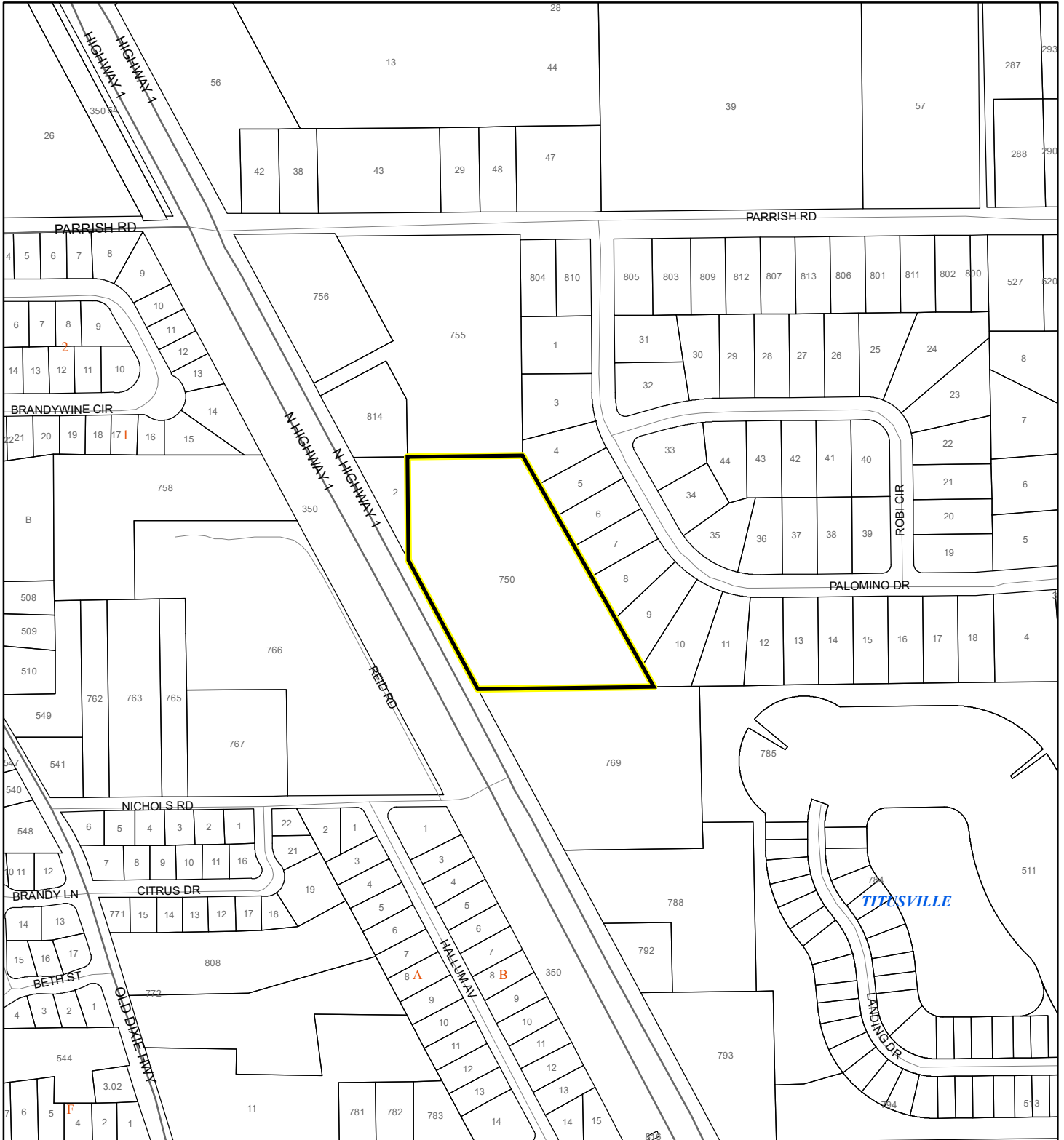
 60 Meters

 All Distances

EAGLE NESTS MAP

TURNER, PAUL J

24SS00003



1:4,800 or 1 inch = 400 feet

 Subject Property

 Parcels

 Eagle Nests
FWS

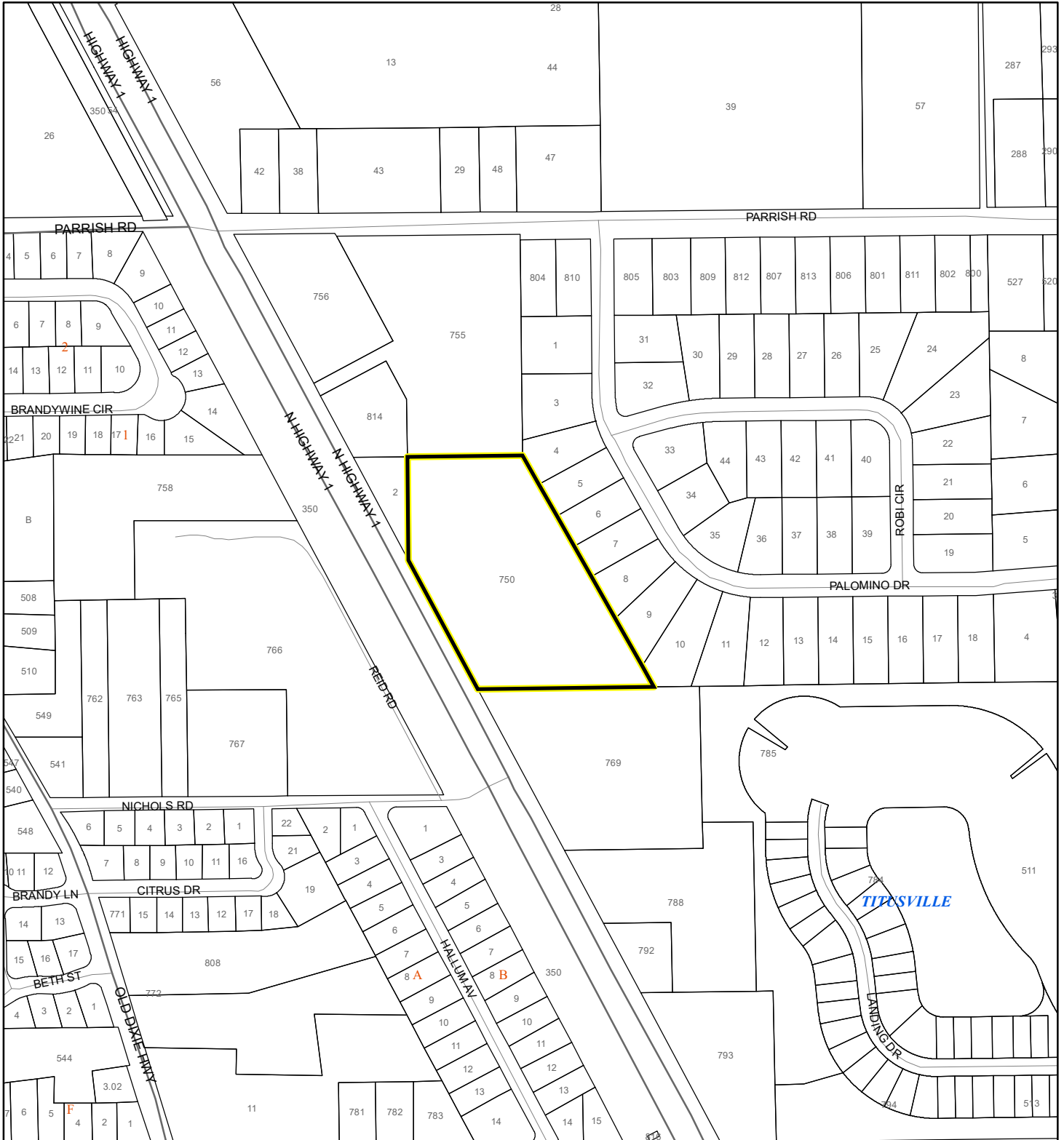
This map was compiled from recorded documents and does not reflect an actual survey. The Brevard County Board of County Commissioners does not assume responsibility for errors or omissions hereon.

Produced by BoCC - GIS Date: 4/2/2024

SCRUB JAY OCCUPANCY MAP

TURNER, PAUL J


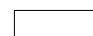

24SS00003



1:4,800 or 1 inch = 400 feet

This map was compiled from recorded documents and does not reflect an actual survey. The Brevard County Board of County Commissioners does not assume responsibility for errors or omissions hereon.

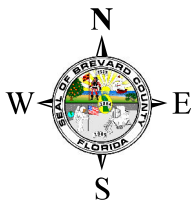
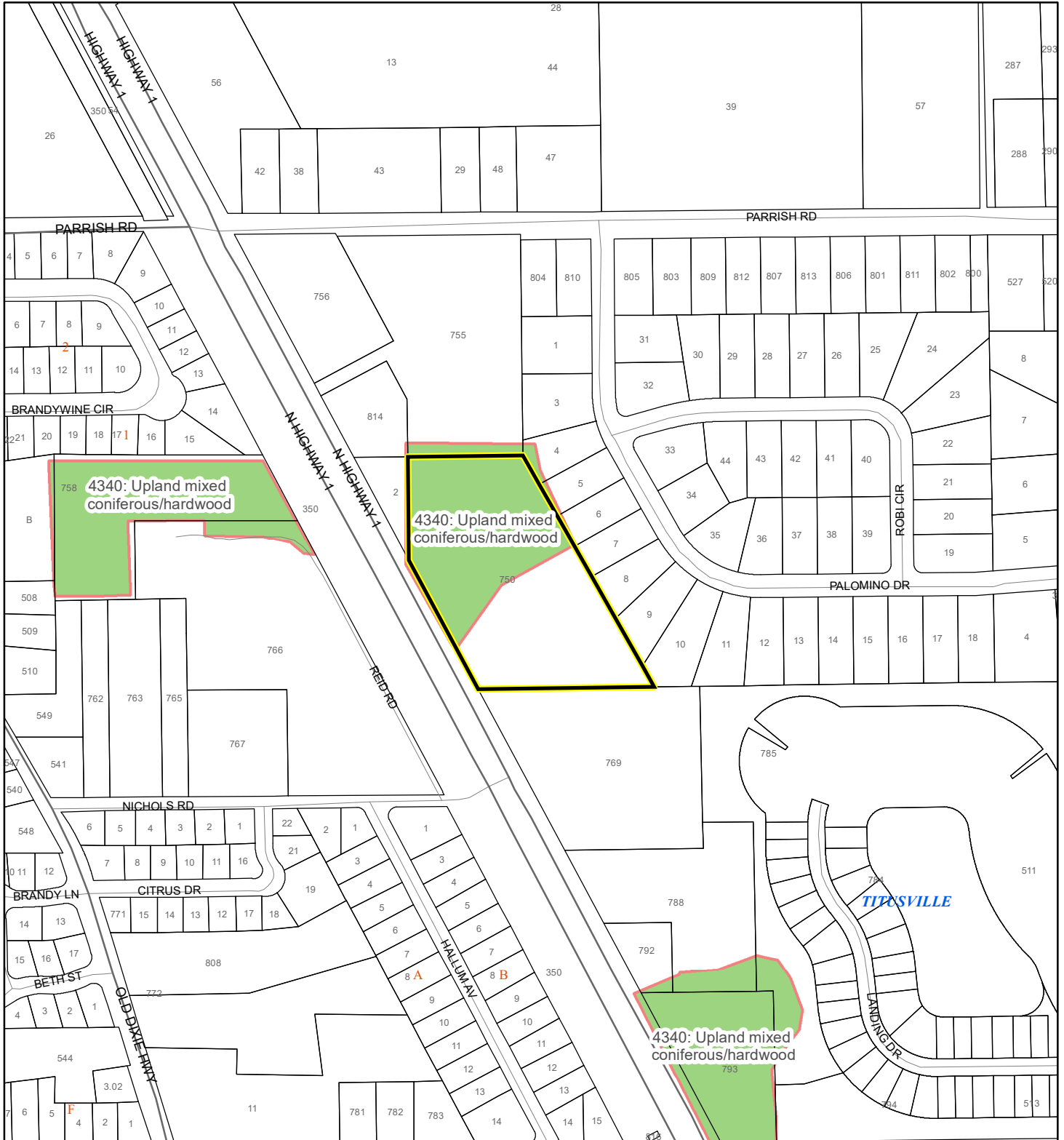
Produced by BoCC - GIS Date: 4/2/2024

-  Subject Property
-  Parcels
-  Scrub Jay Occupancy

SJRWMD FLUCCS UPLAND FORESTS - 4000 Series MAP

TURNER, PAUL J

24SS00003



1:4,800 or 1 inch = 400 feet

This map was compiled from recorded documents and does not reflect an actual survey. The Brevard County Board of County Commissioners does not assume responsibility for errors or omissions hereon.

Produced by BoCC - GIS Date: 4/2/2024

SJRWMD FLUCCS Upland Forests

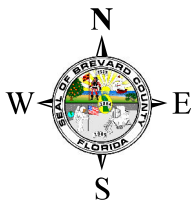
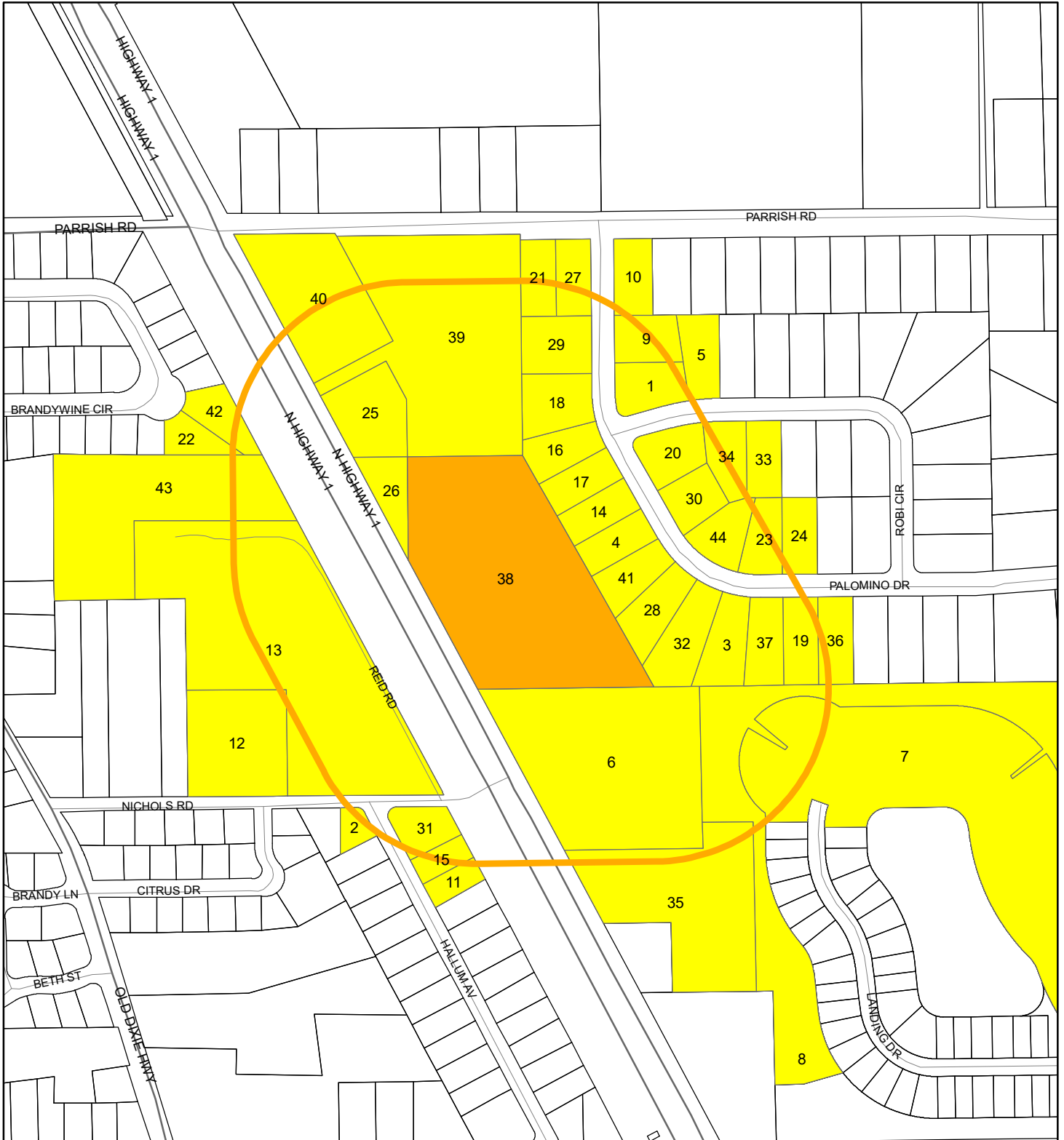
- Upland Coniferous Forest - 4100 Series
- Upland Hardwood Forest - 4200 Series
- Upland Mixed Forest - 4300 Series
- Tree Plantations - 4400 Series

Subject Property

Parcels

RADIUS MAP

TURNER, PAUL J
24SS00003




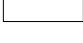


1:4,800 or 1 inch = 400 feet

Buffer Distance: 500 feet

This map was compiled from recorded documents and does not reflect an actual survey. The Brevard County Board of County Commissioners does not assume responsibility for errors or omissions hereon.

Produced by BoCC - GIS Date: 4/2/2024

-  Buffer
-  Subject Property
-  Notify Property
-  Parcels