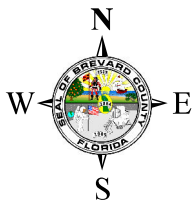
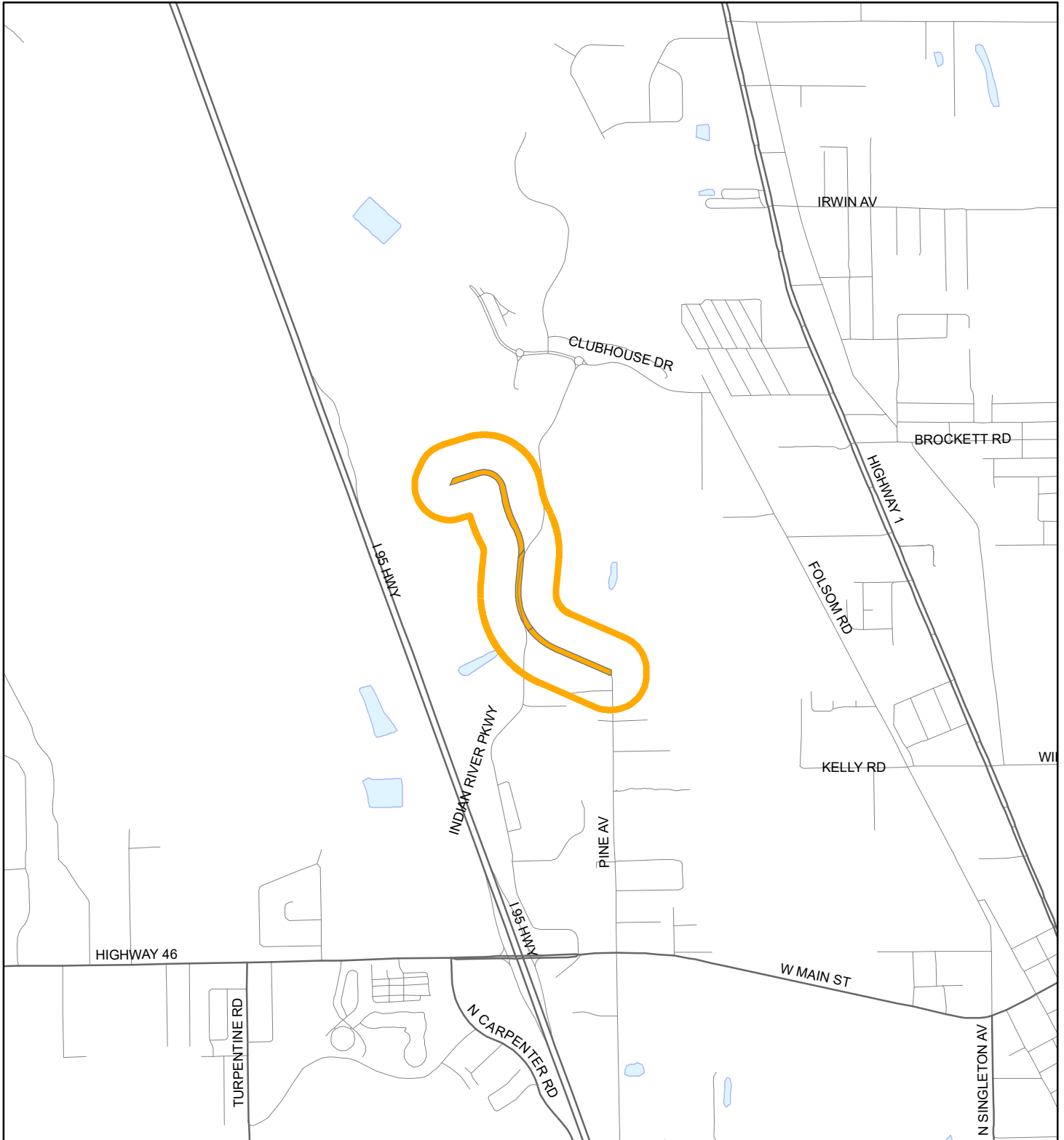


LOCATION MAP

INDIAN RIVER PRESERVE ESTATES CORP.

19SD00005





1:24,000 or 1 inch = 2,000 feet

Buffer Distance: 500 feet

This map was compiled from recorded documents and does not reflect an actual survey. The Brevard County Board of County Commissioners does not assume responsibility for errors or omissions hereon.

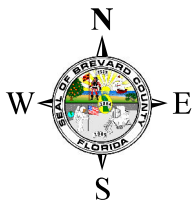
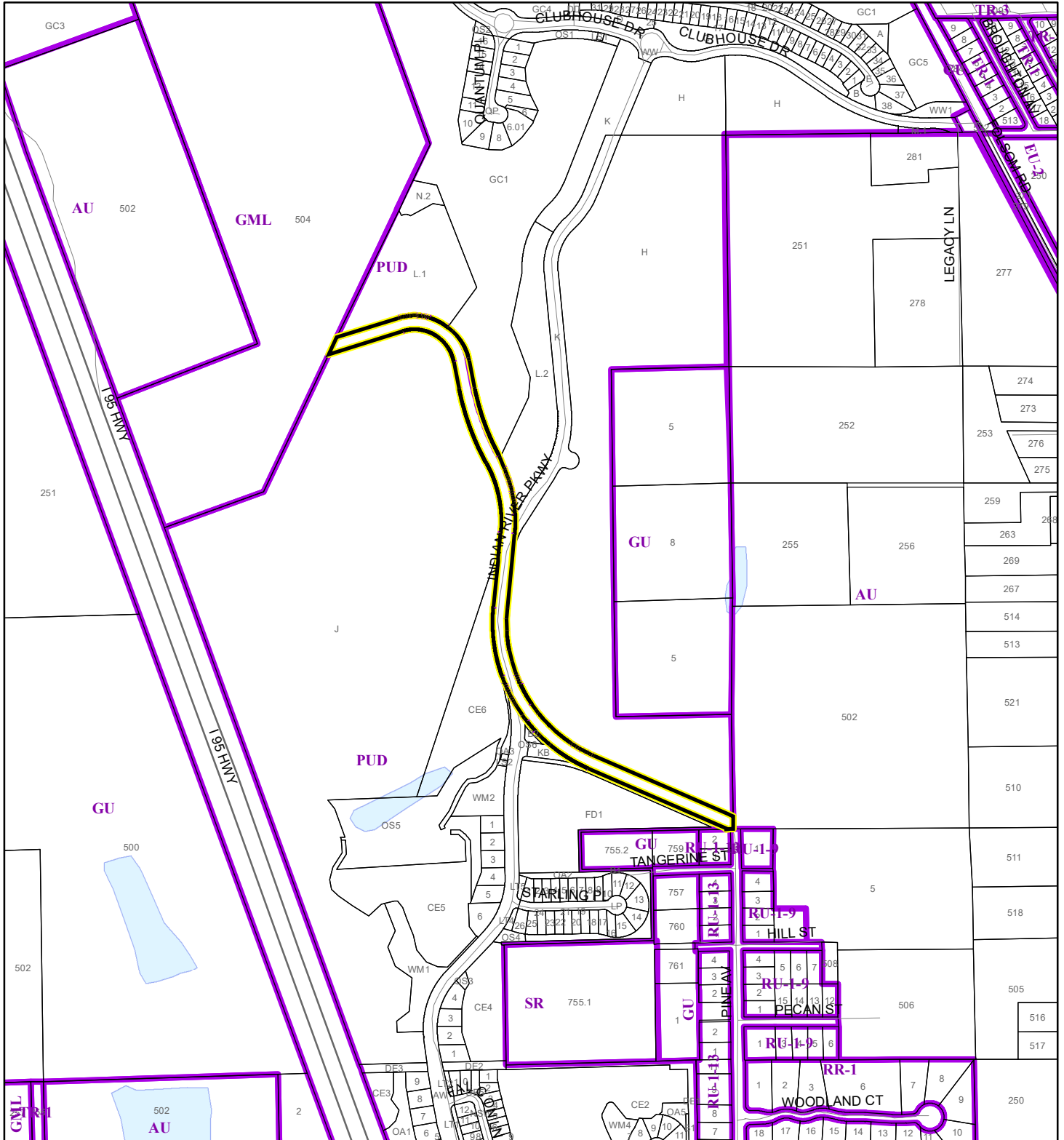
Produced by BoCC - GIS Date: 4/27/2020

-  Buffer
-  Subject Property

ZONING MAP

INDIAN RIVER PRESERVE ESTATES CORP.




19SD00005



1:9,600 or 1 inch = 800 feet

This map was compiled from recorded documents and does not reflect an actual survey. The Brevard County Board of County Commissioners does not assume responsibility for errors or omissions hereon.

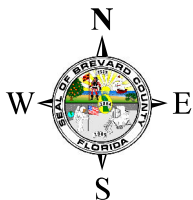
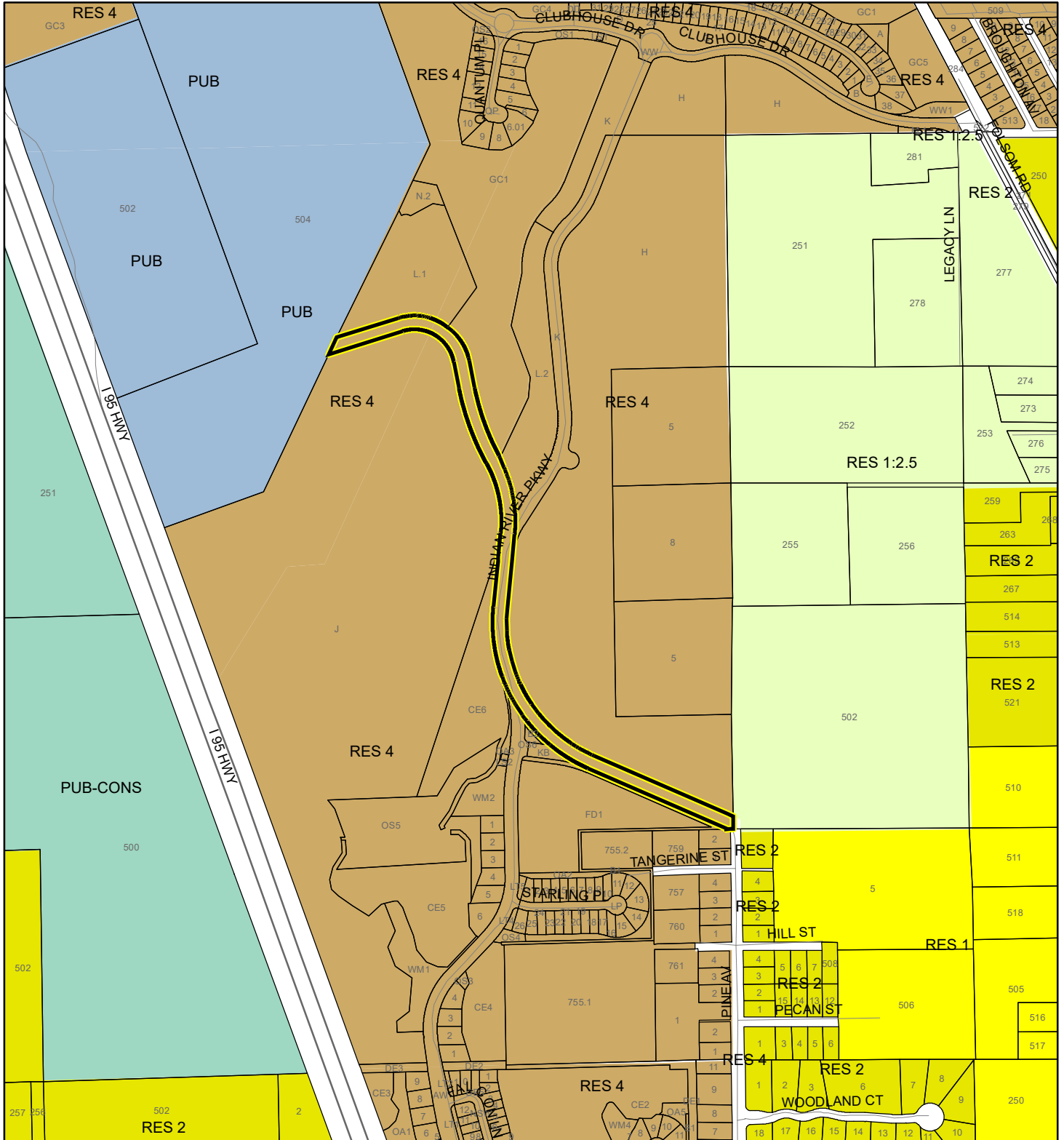
Produced by BoCC - GIS Date: 4/27/2020

-  Subject Property
-  Parcels
-  Zoning



FUTURE LAND USE MAP

INDIAN RIVER PRESERVE ESTATES CORP.

19SD00005



1:9,600 or 1 inch = 800 feet

 Subject Property
 Parcels

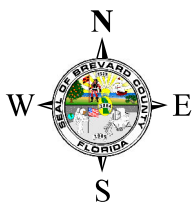
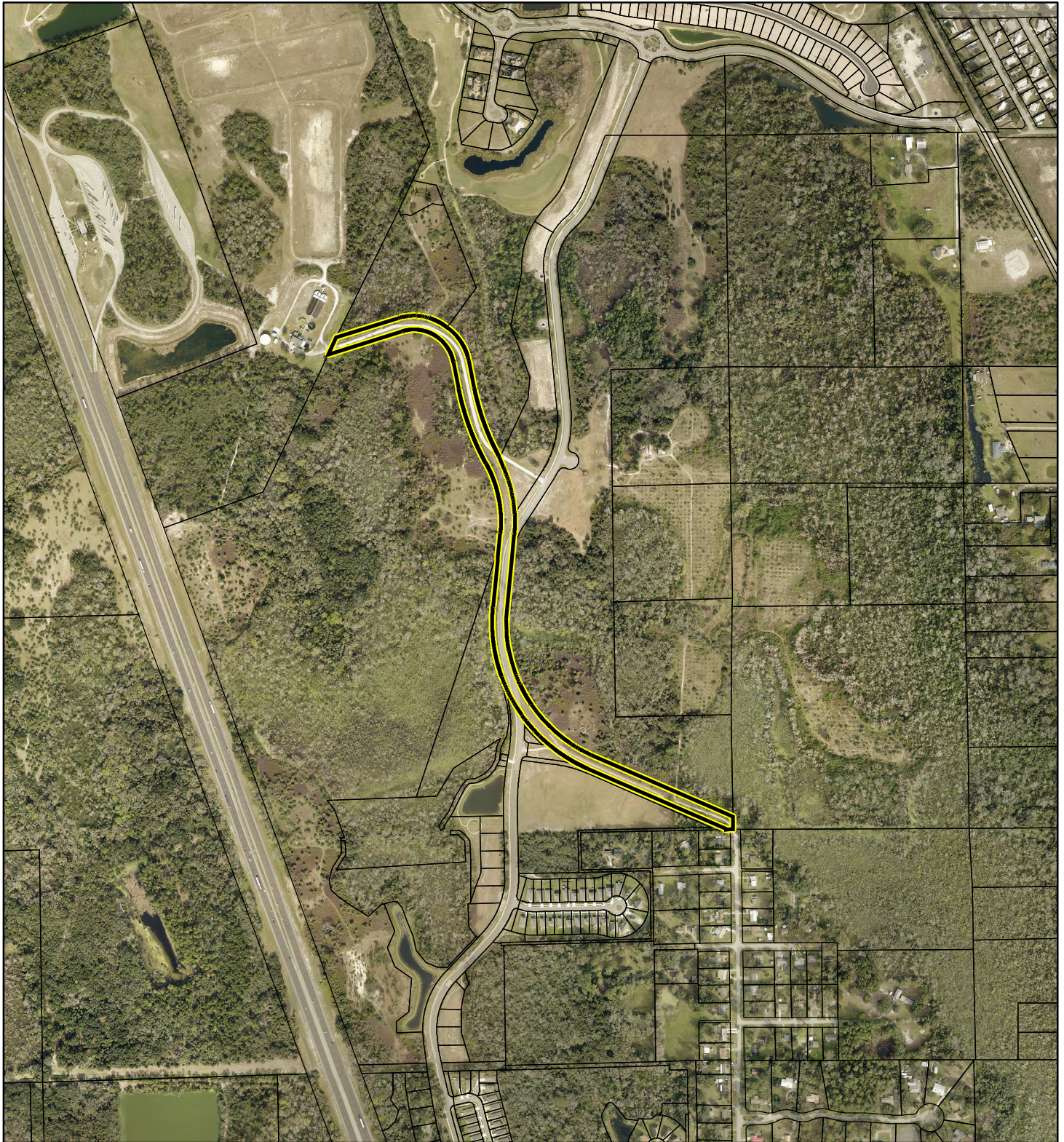
This map was compiled from recorded documents and does not reflect an actual survey. The Brevard County Board of County Commissioners does not assume responsibility for errors or omissions hereon.

Produced by BoCC - GIS Date: 4/27/2020

AERIAL MAP

INDIAN RIVER PRESERVE ESTATES CORP.

19SD00005




1:9,600 or 1 inch = 800 feet

PHOTO YEAR: 2020

This map was compiled from recorded documents and does not reflect an actual survey. The Brevard County Board of County Commissioners does not assume responsibility for errors or omissions hereon.

Produced by BoCC - GIS Date: 4/27/2020

 Subject Property

 Parcels