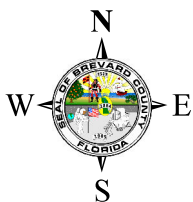
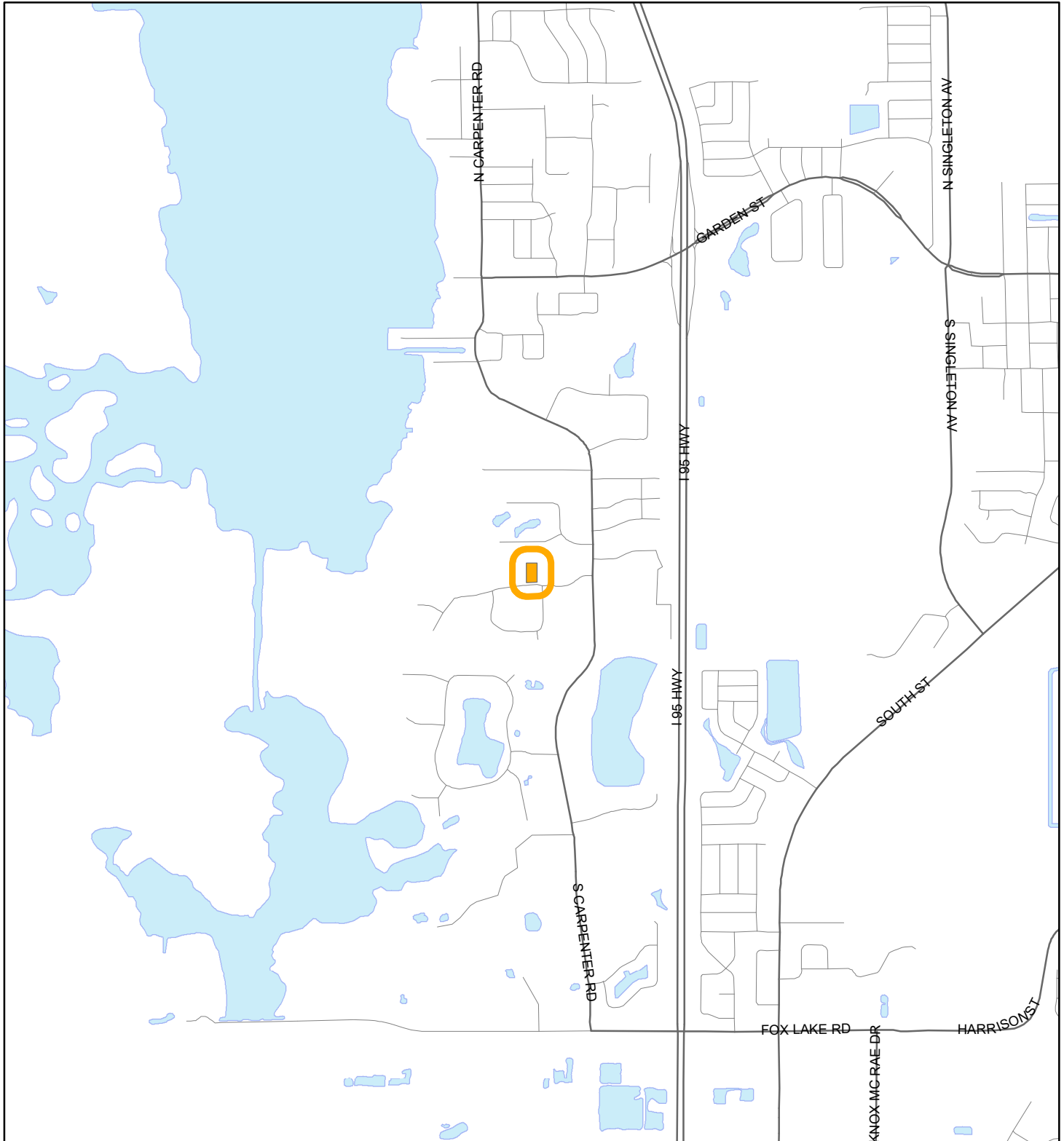


LOCATION MAP

WERTIN, RYDER JAMES

25V00022





1:24,000 or 1 inch = 2,000 feet

Buffer Distance: 200 feet

This map was compiled from recorded documents and does not reflect an actual survey. The Brevard County Board of County Commissioners does not assume responsibility for errors or omissions hereon.

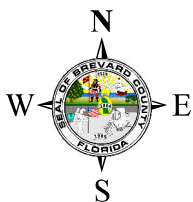
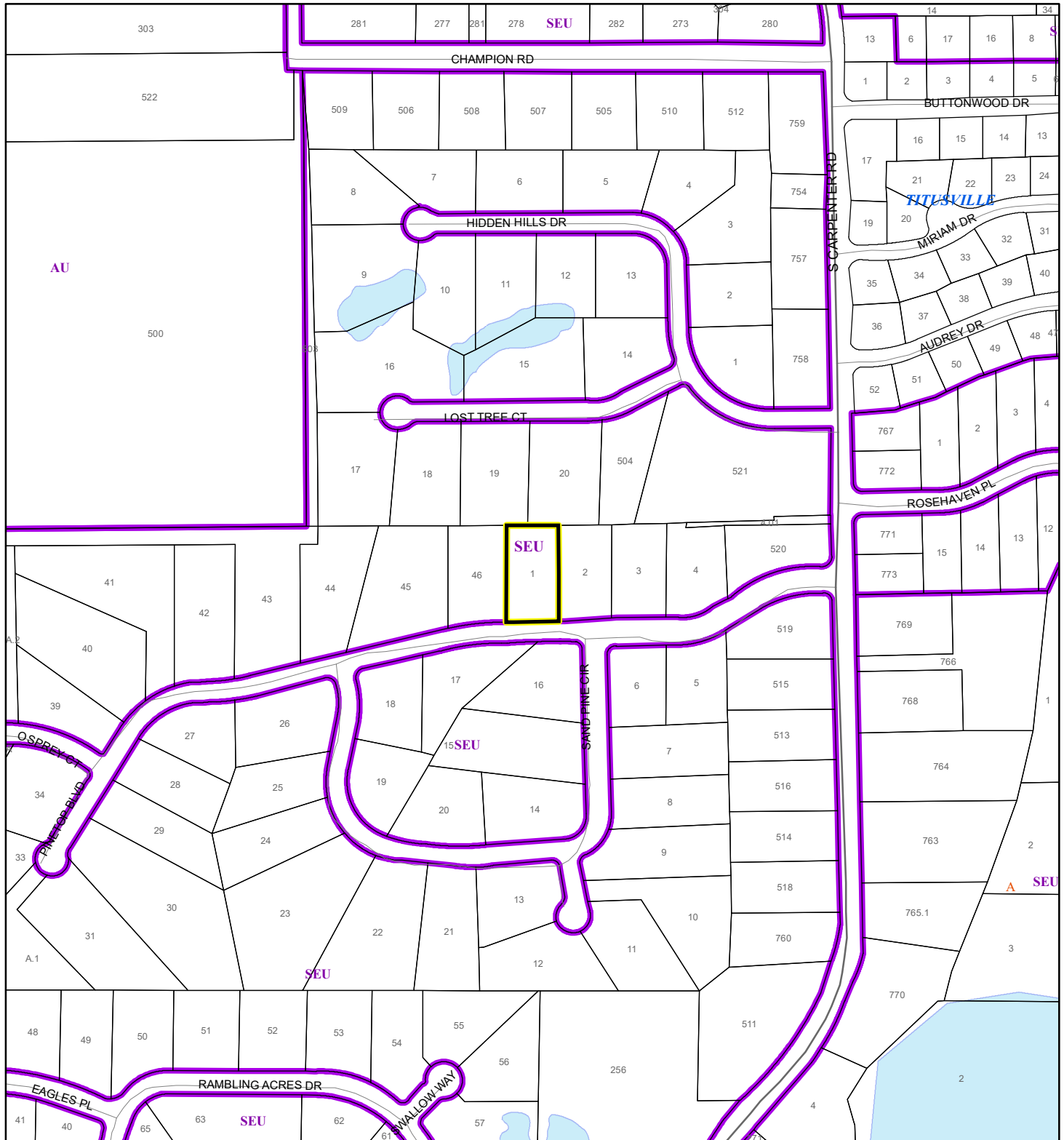
Produced by BoCC - GIS Date: 5/5/2025

 Buffer
 Subject Property

ZONING MAP

WERTIN, RYDER JAMES


25V00022



1:4,800 or 1 inch = 400 feet

This map was compiled from recorded documents and does not reflect an actual survey. The Brevard County Board of County Commissioners does not assume responsibility for errors or omissions hereon.

Produced by BoCC - GIS Date: 5/5/2025

 Subject Property

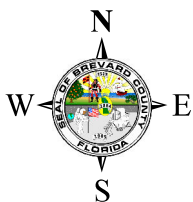
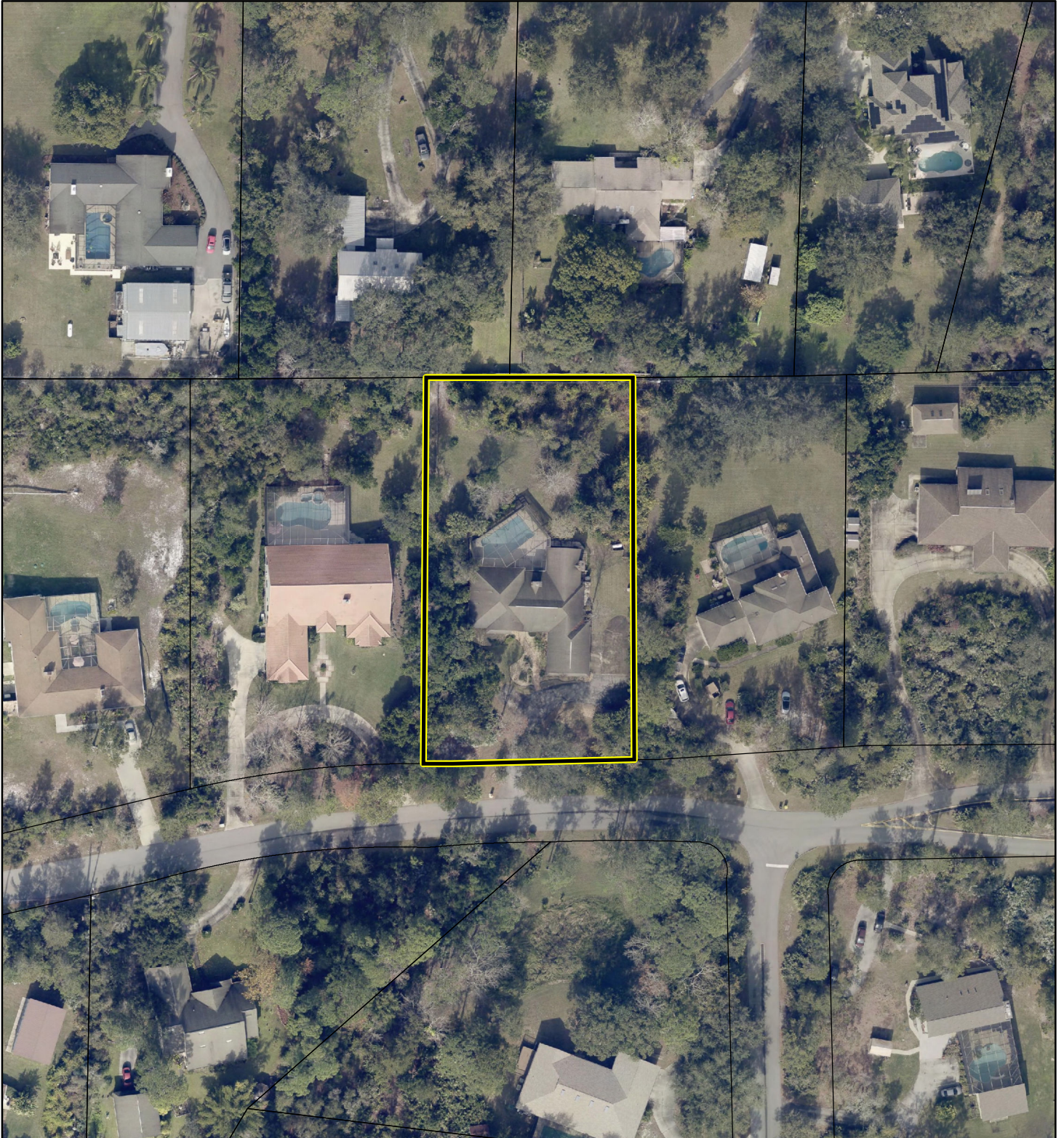
 Parcels

 Zoning

AERIAL MAP

WERTIN, RYDER JAMES

25V00022




1:1,200 or 1 inch = 100 feet

PHOTO YEAR: 2024

This map was compiled from recorded documents and does not reflect an actual survey. The Brevard County Board of County Commissioners does not assume responsibility for errors or omissions hereon.

Produced by BoCC - GIS Date: 5/5/2025

 Subject Property

 Parcels