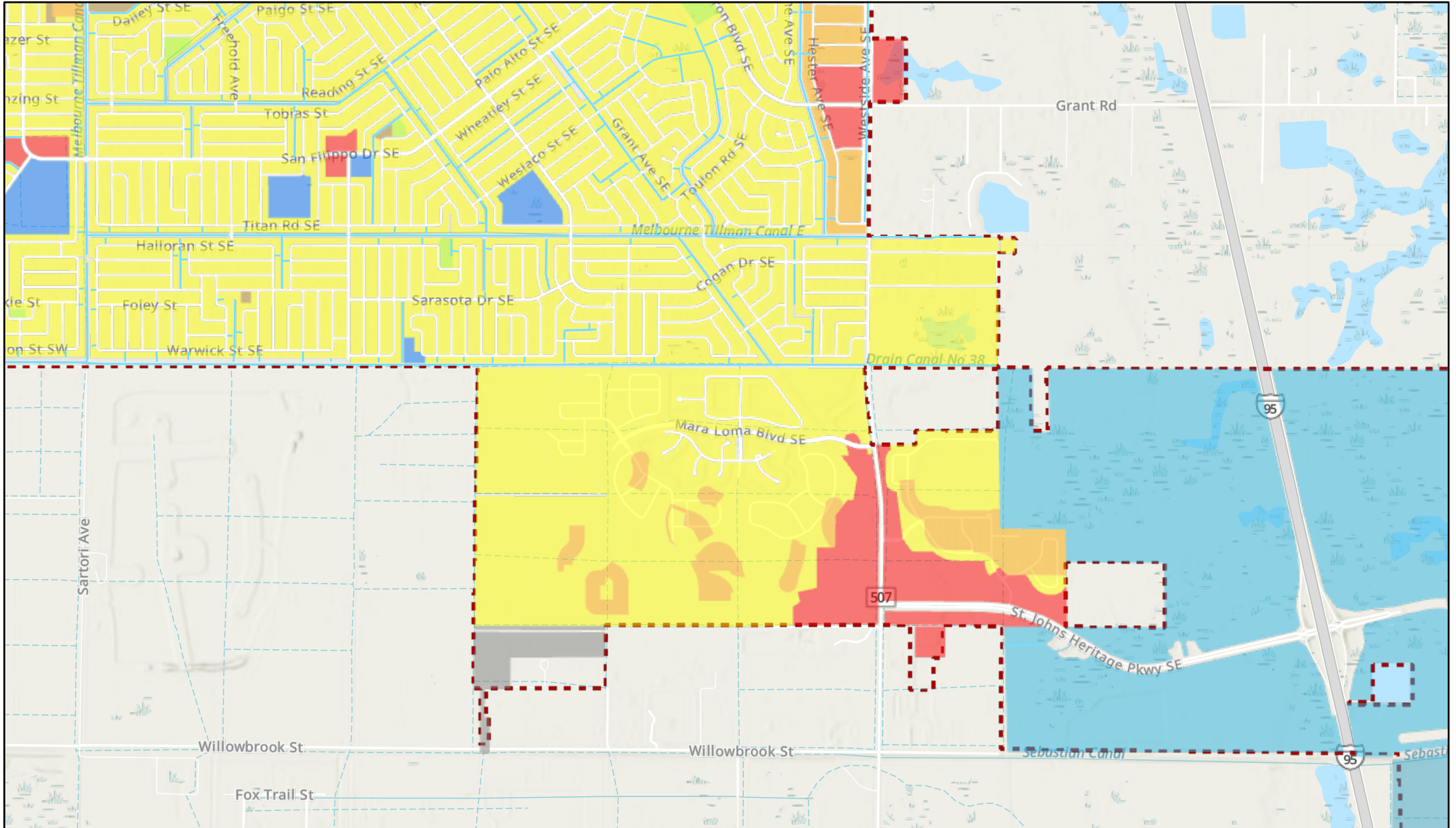


FLUE Babcock/SJHP Vicinity



4/3/2024, 8:48:36 AM

- Canals
- Low Density Residential
- Special Planning Area: Emerald Lakes
- Public/Semi-Public
- Special Planning Area: Micco Park Village
- Commercial
- Residential, Medium Density
- High Density Residential
- Recreation & Open Space
- City Limits
- Utilities

