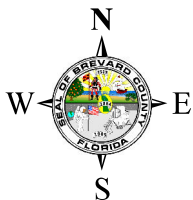
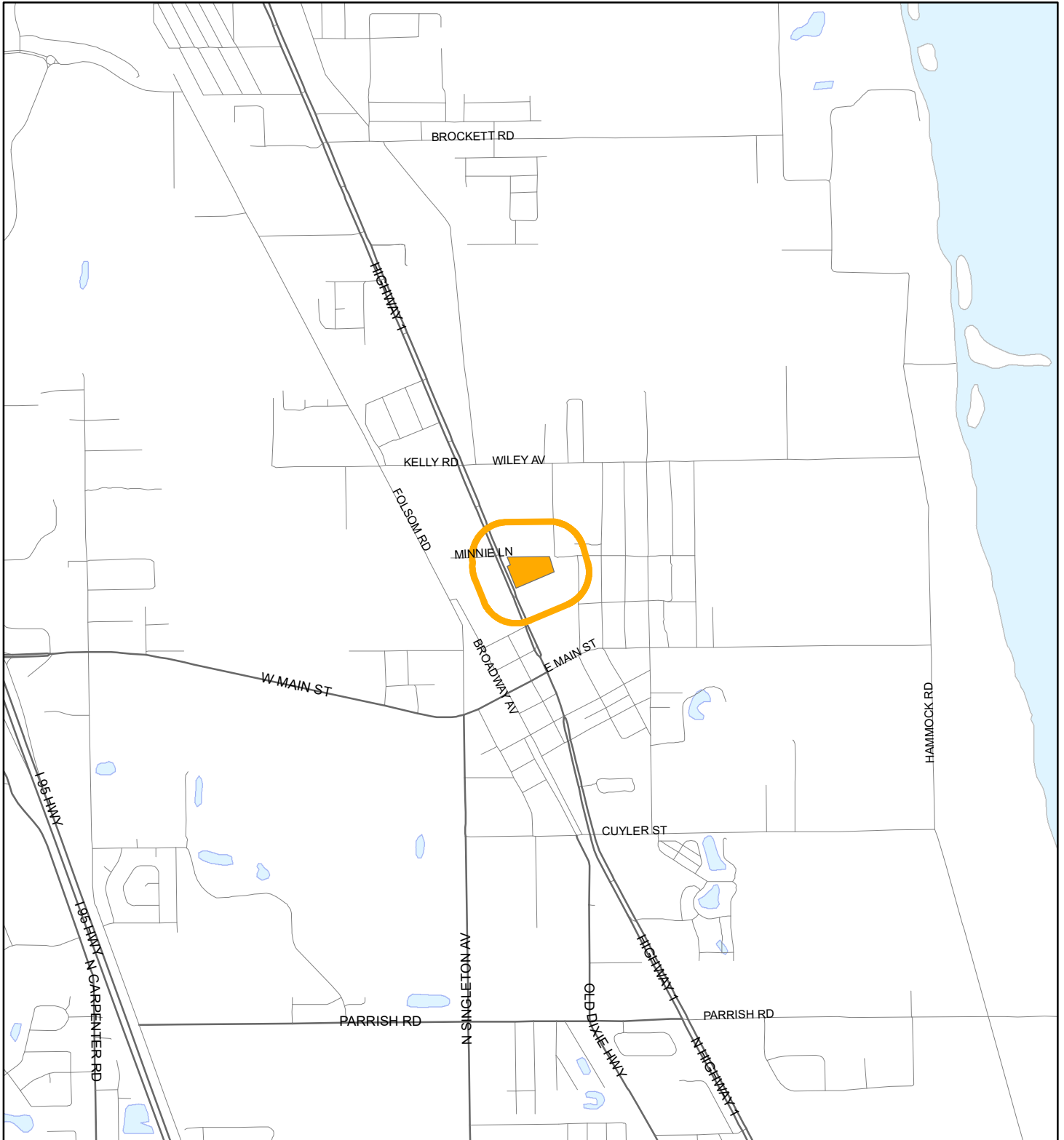


# LOCATION MAP

DAVID C RAMAGE TRUST and CYNTHIA R RAMAGE TRUST  
23Z00006





1:24,000 or 1 inch = 2,000 feet

Buffer Distance: 500 feet

This map was compiled from recorded documents and does not reflect an actual survey. The Brevard County Board of County Commissioners does not assume responsibility for errors or omissions hereon.

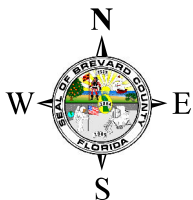
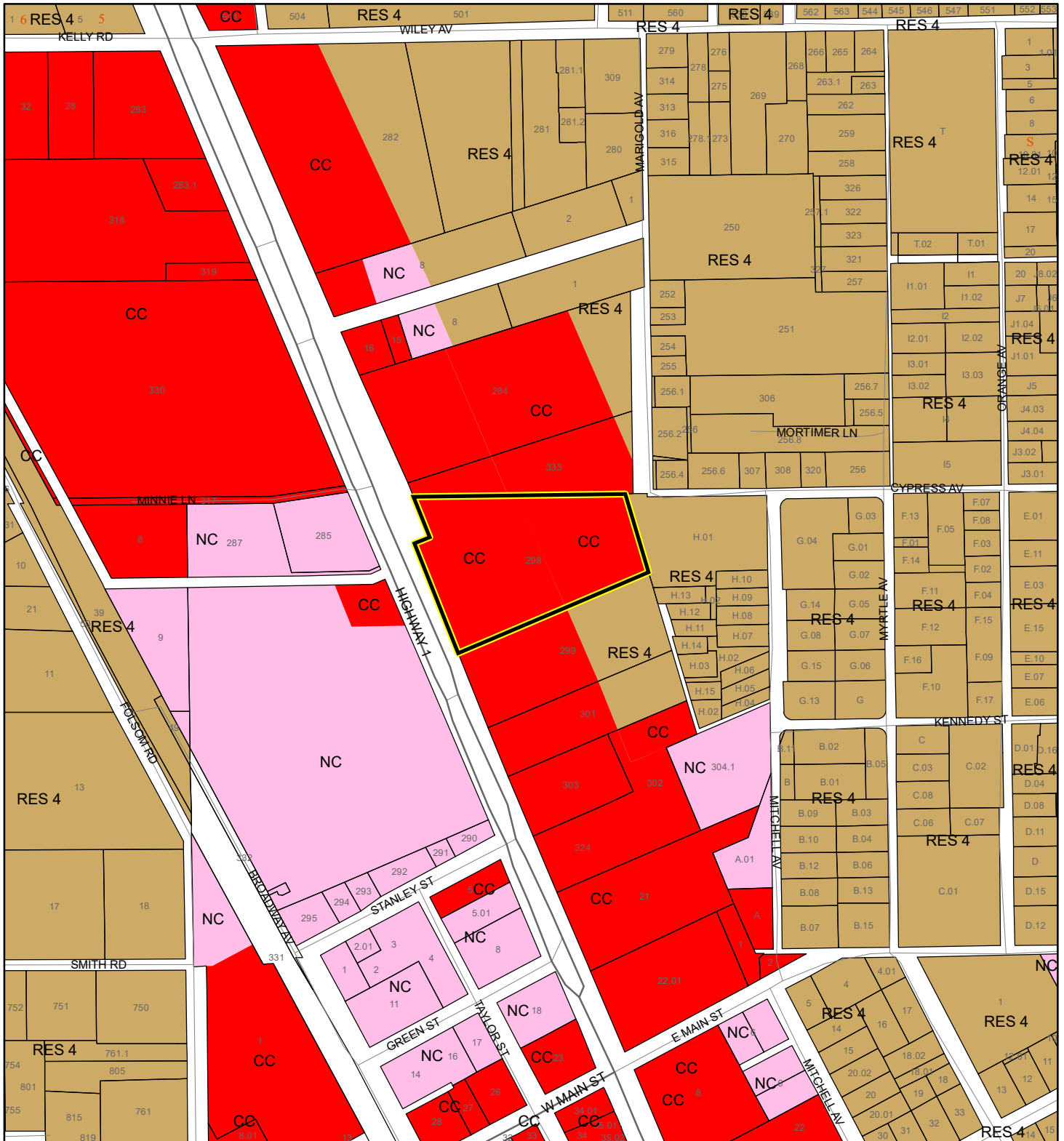
Produced by BoCC - GIS Date: 2/3/2023

-  Buffer
-  Subject Property





# FUTURE LAND USE MAP

DAVID C RAMAGE TRUST and CYNTHIA R RAMAGE TRUST  
23Z00006



1:4,800 or 1 inch = 400 feet

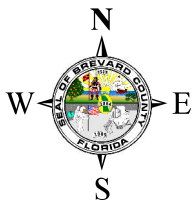
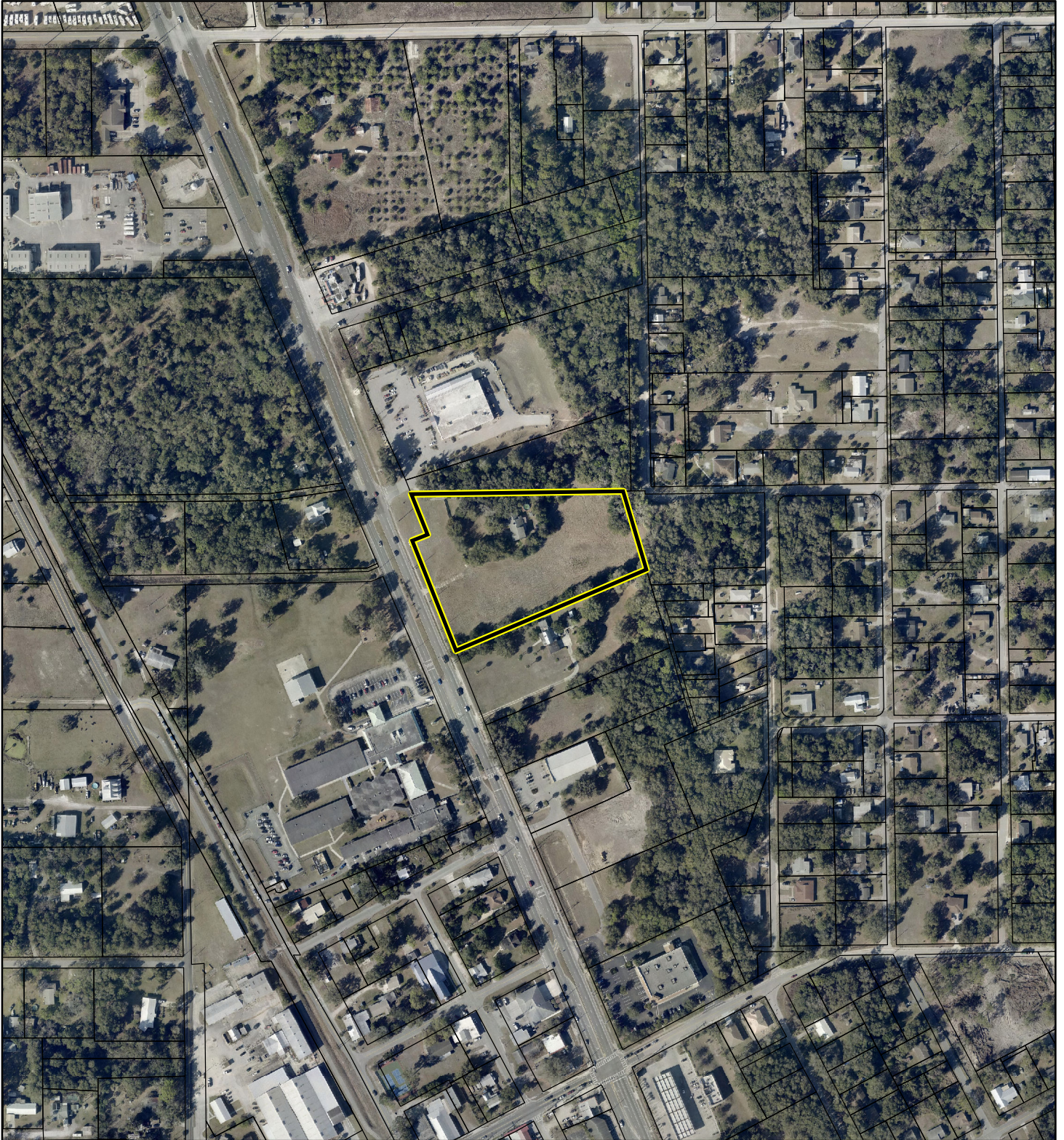
 Subject Property  
 Parcels

This map was compiled from recorded documents and does not reflect an actual survey. The Brevard County Board of County Commissioners does not assume responsibility for errors or omissions hereon.

Produced by BoCC - GIS Date: 2/3/2023

# AERIAL MAP

DAVID C RAMAGE TRUST and CYNTHIA R RAMAGE TRUST  
23Z00006




1:4,800 or 1 inch = 400 feet

PHOTO YEAR: 2022

This map was compiled from recorded documents and does not reflect an actual survey. The Brevard County Board of County Commissioners does not assume responsibility for errors or omissions hereon.

Produced by BoCC - GIS Date: 2/3/2023

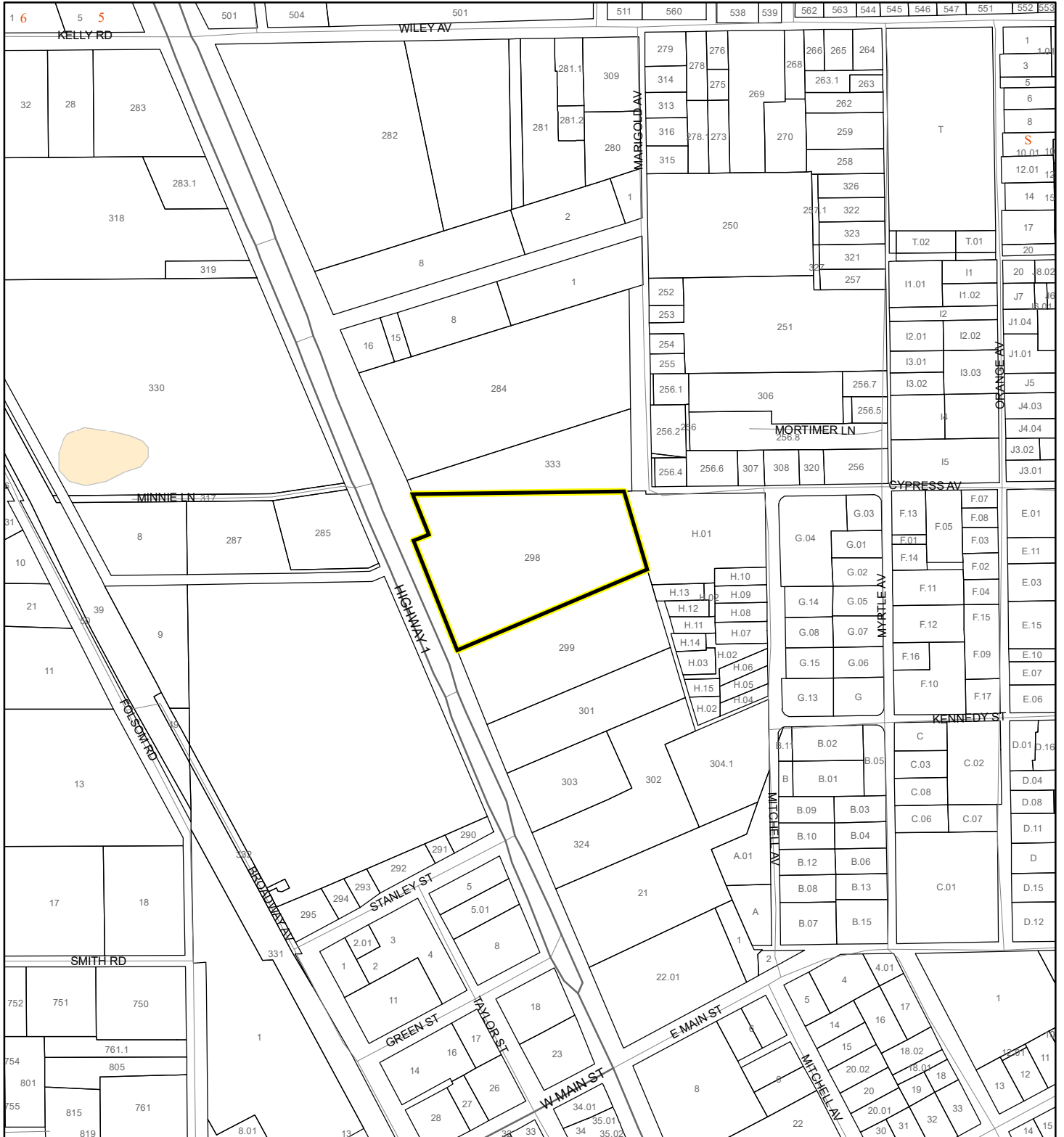
 Subject Property

 Parcels

# NWI WETLANDS MAP

DAVID C RAMAGE TRUST

23Z00006






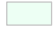

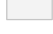

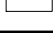


1:4,800 or 1 inch = 400 feet

This map was compiled from recorded documents and does not reflect an actual survey. The Brevard County Board of County Commissioners does not assume responsibility for errors or omissions hereon.

Produced by BoCC - GIS Date: 1/26/2023

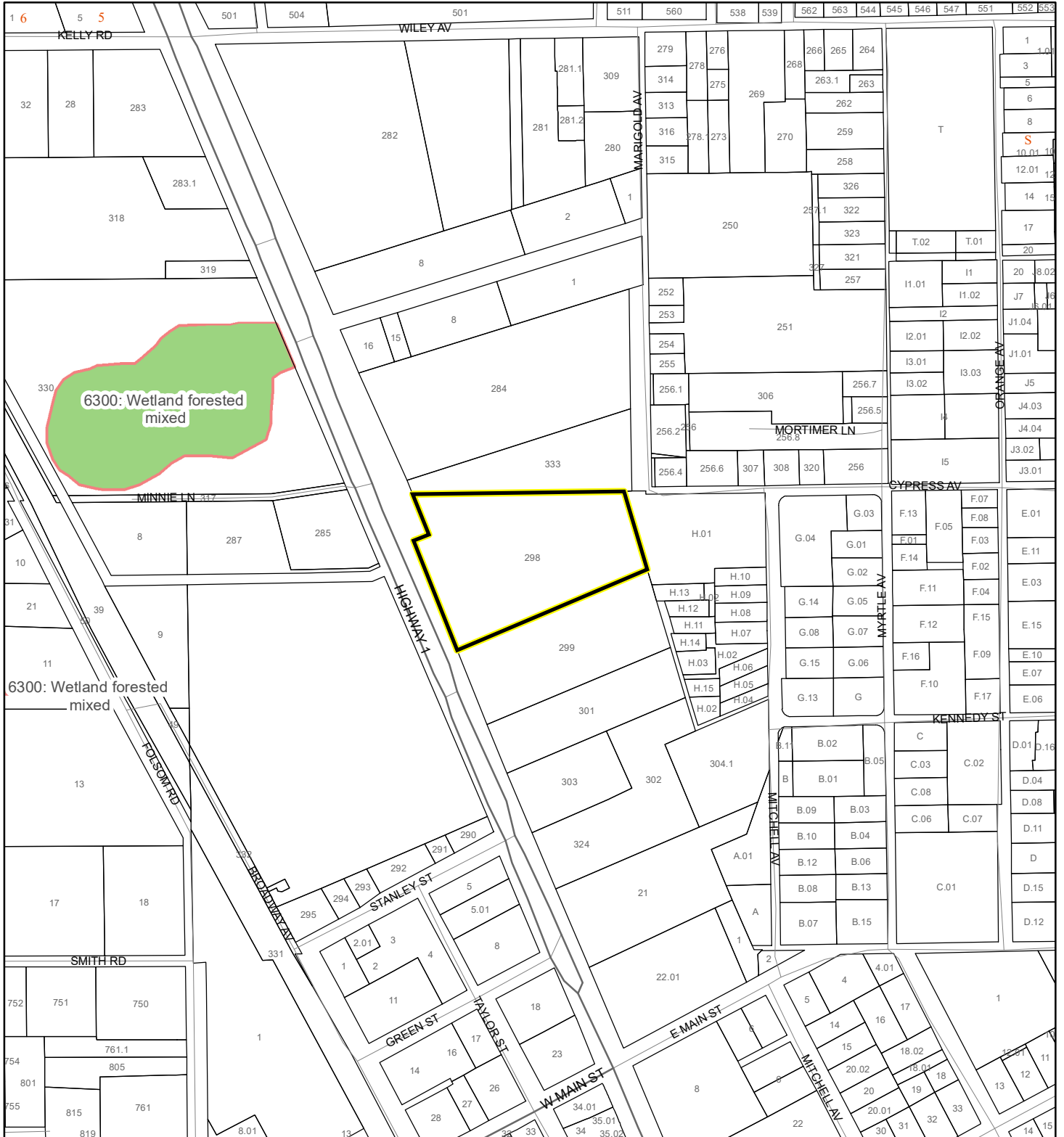
## National Wetlands Inventory (NWI)

- |  |  |
|--|--|
|  Estuarine and Marine Deepwater    |  Freshwater Pond  |
|  Estuarine and Marine Wetland      |  Lake             |
|  Freshwater Emergent Wetland       |  Other            |
|  Freshwater Forested/Shrub Wetland |  Riverine         |
|  |  Subject Property |
|  |  Parcels          |

# SJRWMD FLUCCS WETLANDS - 6000 Series MAP

DAVID C RAMAGE TRUST

23Z00006



1:4,800 or 1 inch = 400 feet

This map was compiled from recorded documents and does not reflect an actual survey. The Brevard County Board of County Commissioners does not assume responsibility for errors or omissions hereon.

Produced by BoCC - GIS Date: 1/26/2023

## SJRWMD FLUCCS WETLANDS

- Wetland Hardwood Forests - Series 6100
- Wetland Coniferous Forest - Series 6200
- Wetland Forested Mixed - Series 6300
- Vegetated Non-Forested Wetlands - Series 6400
- Non-Vegetated Wetland - Series 6500

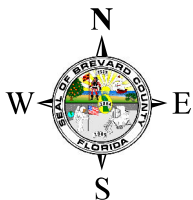
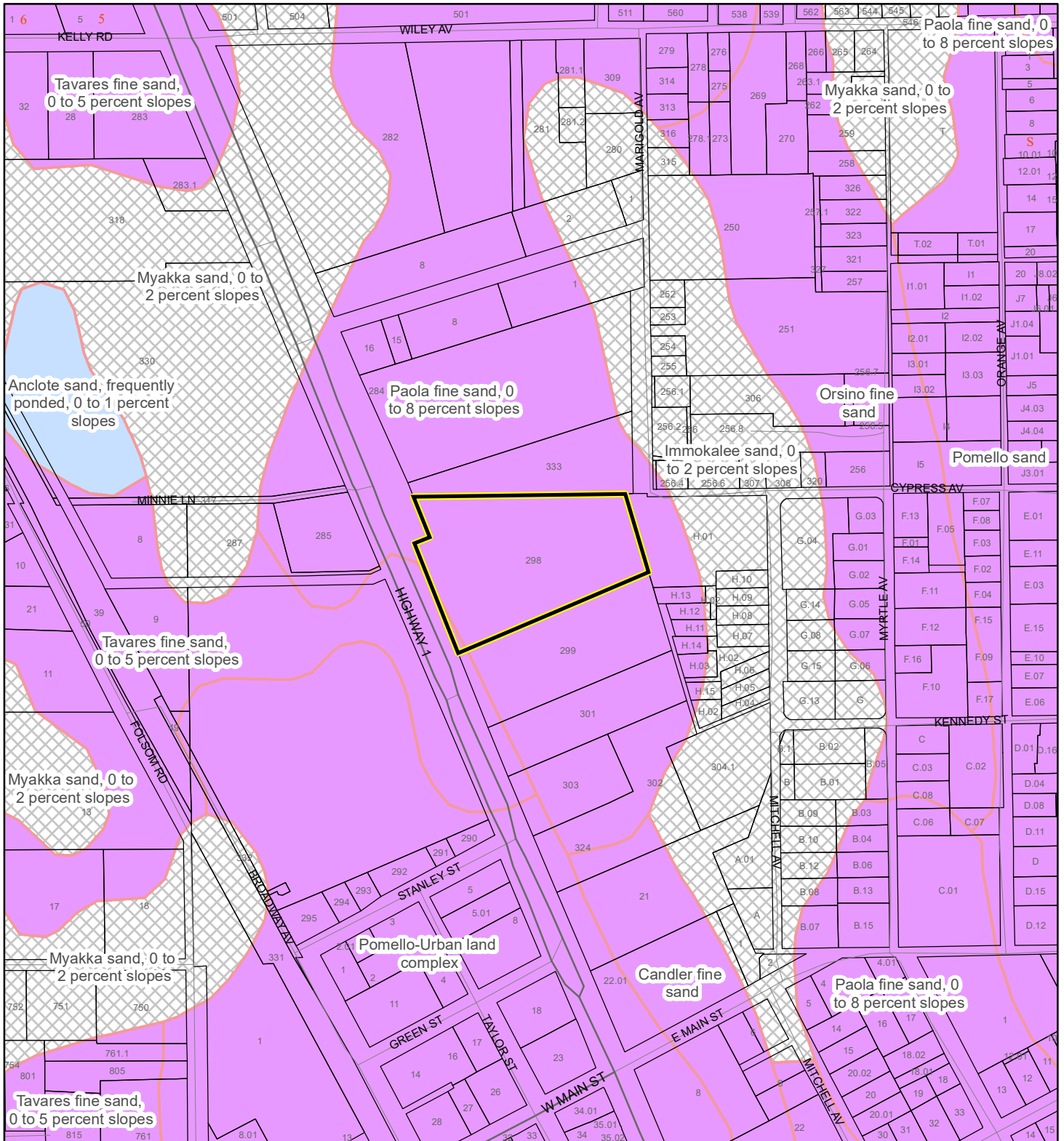
Subject Property

Parcels

# USDA SCSSS SOILS MAP

DAVID C RAMAGE TRUST

23Z00006



1:4,800 or 1 inch = 400 feet

This map was compiled from recorded documents and does not reflect an actual survey. The Brevard County Board of County Commissioners does not assume responsibility for errors or omissions hereon.

Produced by BoCC - GIS Date: 1/26/2023

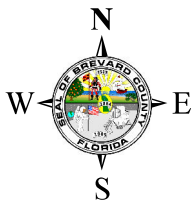
## USDA SCSSS Soils

- Aquifer and Hydric
- Aquifer
- Hydric
- None
- Subject Property
- Parcels

# FEMA FLOOD ZONES MAP

DAVID C RAMAGE TRUST

23Z00006



1:4,800 or 1 inch = 400 feet

This map was compiled from recorded documents and does not reflect an actual survey. The Brevard County Board of County Commissioners does not assume responsibility for errors or omissions hereon.

Produced by BoCC - GIS Date: 1/26/2023

### FEMA Flood Zones

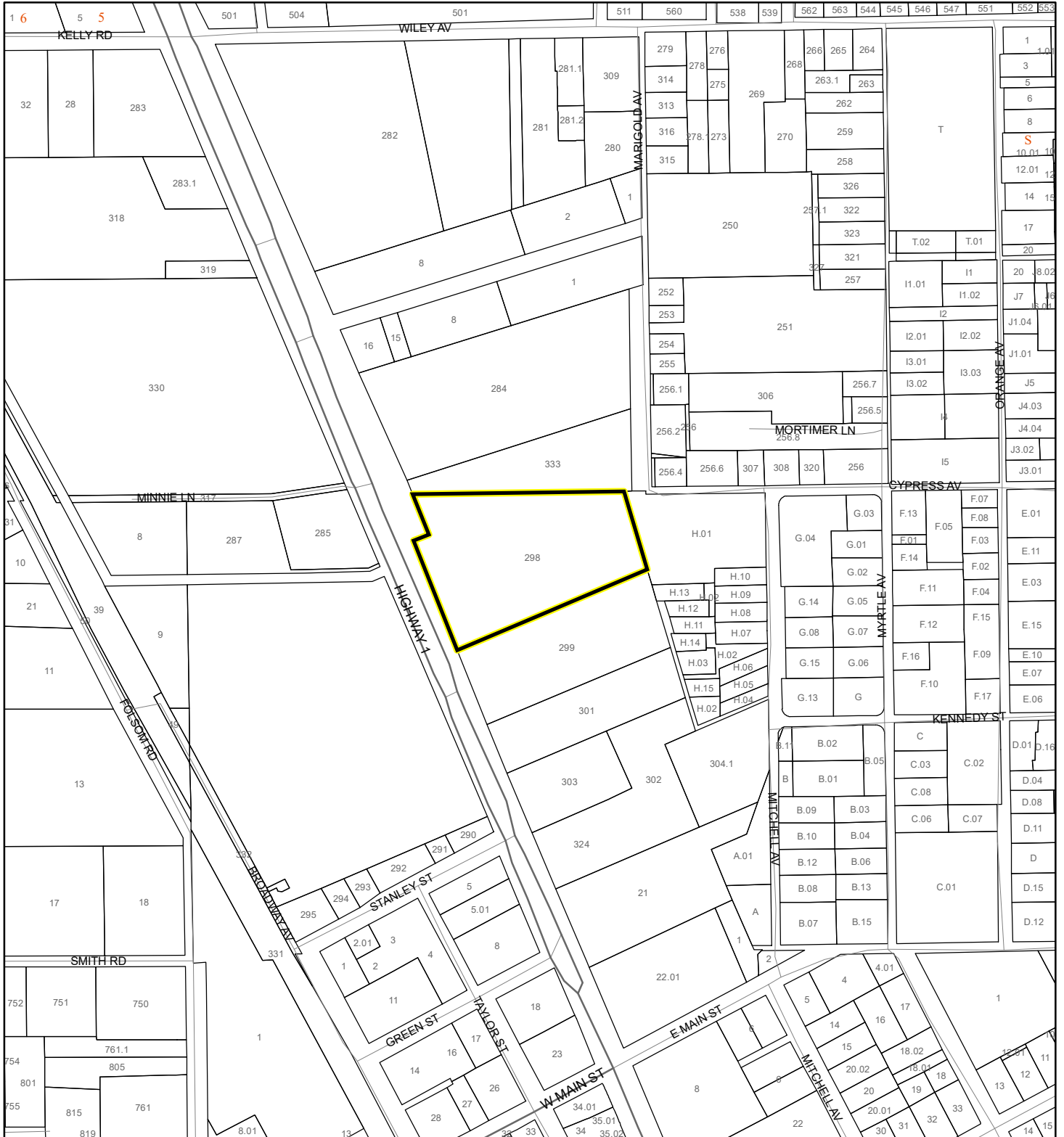
- |   |  |  |
|---|--|--|
| <span style="display:inline-block; width:15px; height:15px; background-color:lightcoral; border:1px solid black;"></span> A   | <span style="display:inline-block; width:15px; height:15px; background-color:yellow; border:1px solid black;"></span> AO         | <span style="display:inline-block; width:15px; height:15px; border:1px solid black;"></span> X |
| <span style="display:inline-block; width:15px; height:15px; background-color:lightyellow; border:1px solid black;"></span> AE | <span style="display:inline-block; width:15px; height:15px; background-color:orange; border:1px solid black;"></span> Open Water |  |
| <span style="display:inline-block; width:15px; height:15px; background-color:lightblue; border:1px solid black;"></span> AH   | <span style="display:inline-block; width:15px; height:15px; background-color:lightorange; border:1px solid black;"></span> VE    |  |
| <span style="display:inline-block; width:15px; height:15px; border-bottom:3px solid yellow;"></span> Subject Property         | <span style="display:inline-block; width:15px; height:15px; border:1px solid black;"></span> Parcels                             |  |



# COASTAL HIGH HAZARD AREA MAP

DAVID C RAMAGE TRUST

23Z00006



1:4,800 or 1 inch = 400 feet


This map was compiled from recorded documents and does not reflect an actual survey. The Brevard County Board of County Commissioners does not assume responsibility for errors or omissions hereon.

Produced by BoCC - GIS Date: 1/26/2023

 Subject Property

 Parcels

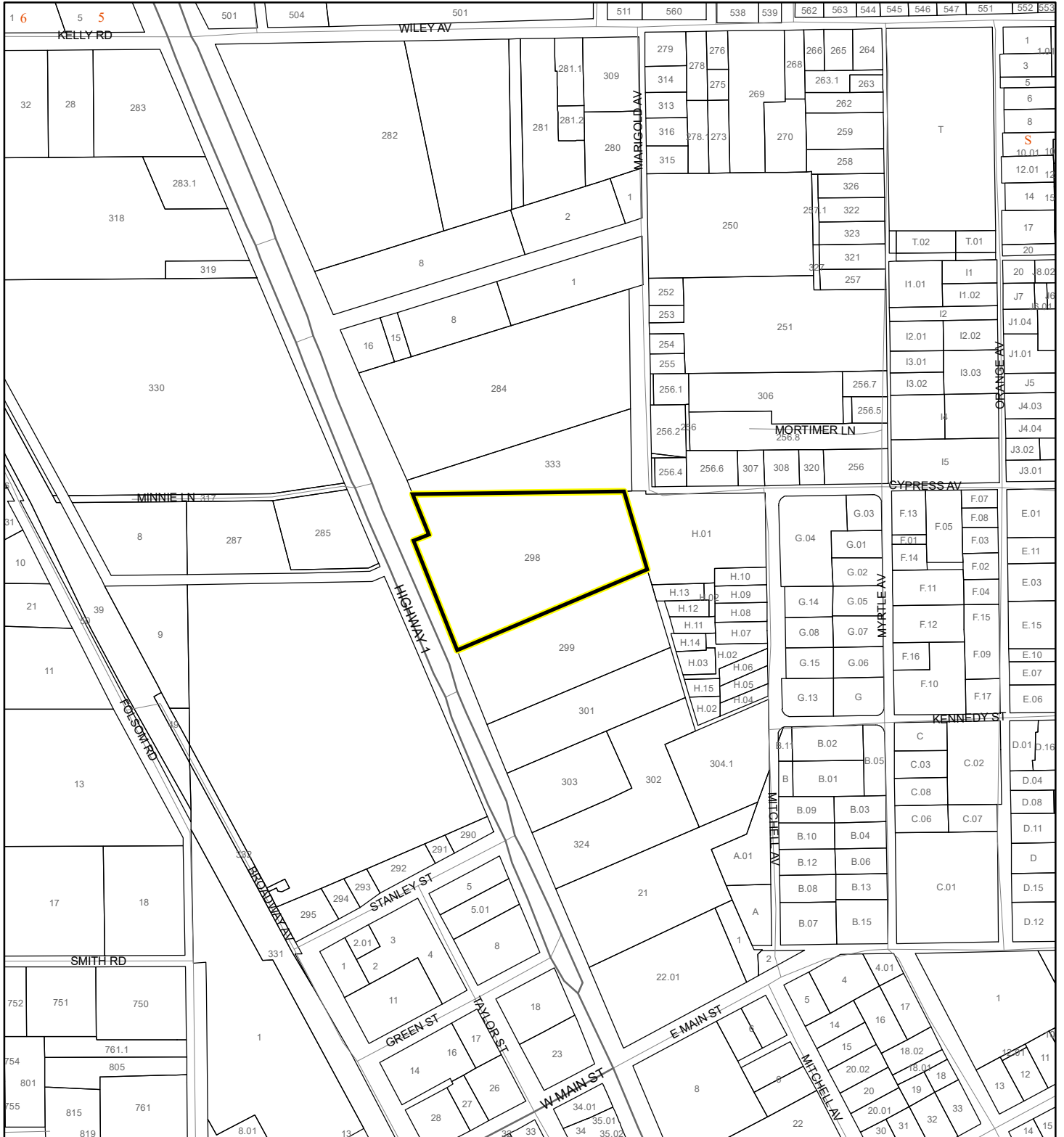
**Coastal High Hazard Area**

 SurgeZoneCat1

# INDIAN RIVER LAGOON SEPTIC OVERLAY MAP

DAVID C RAMAGE TRUST

23Z00006



1:4,800 or 1 inch = 400 feet

This map was compiled from recorded documents and does not reflect an actual survey. The Brevard County Board of County Commissioners does not assume responsibility for errors or omissions hereon.

Produced by BoCC - GIS Date: 1/26/2023

 Subject Property

 Parcels

**Septic Overlay**

 40 Meters

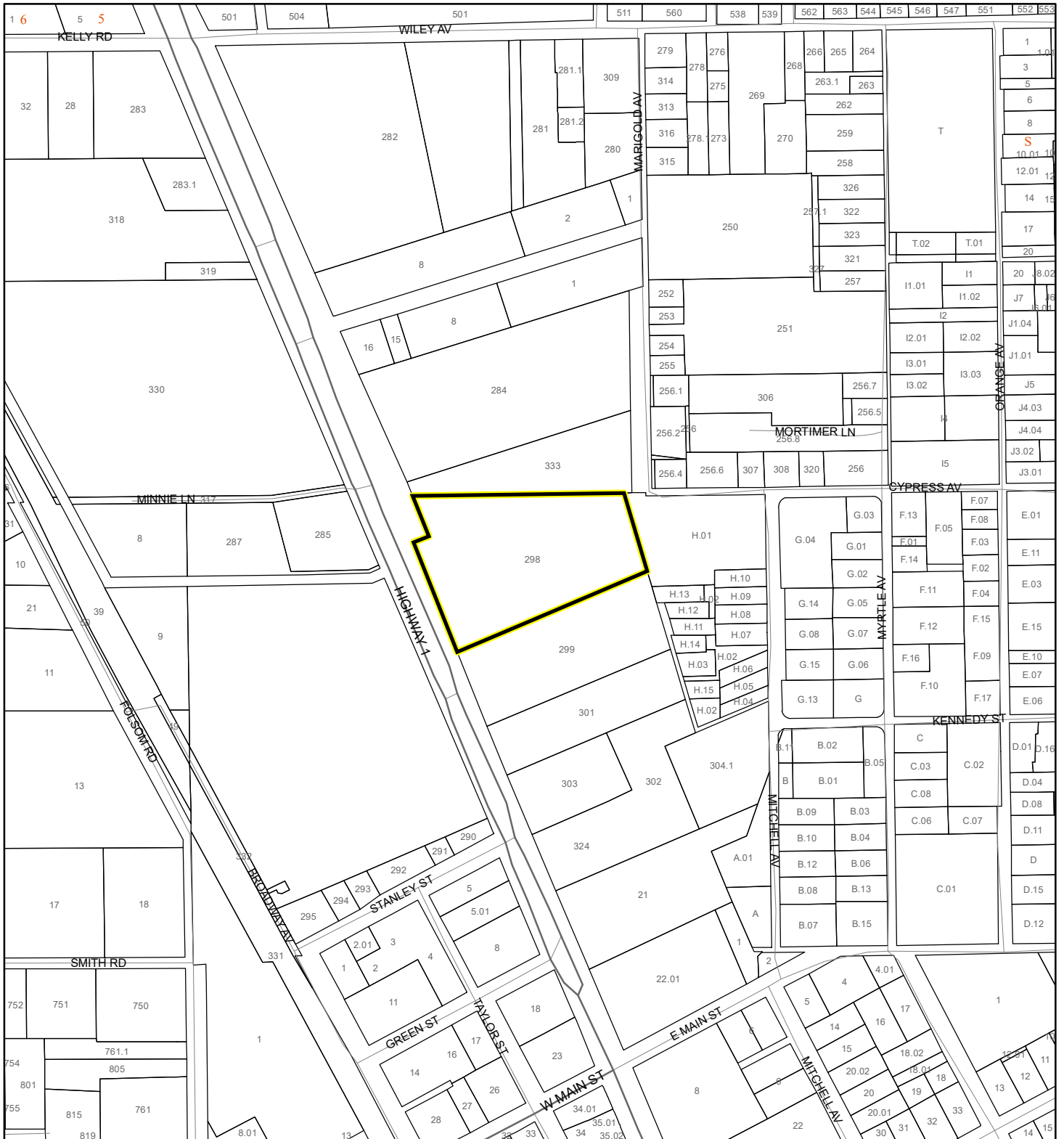
 60 Meters

 All Distances

# EAGLE NESTS MAP

DAVID C RAMAGE TRUST

23Z00006



1:4,800 or 1 inch = 400 feet

 Subject Property

 Parcels



Eagle Nests  
FWS 2010

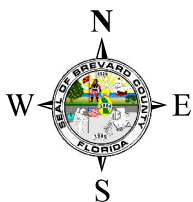
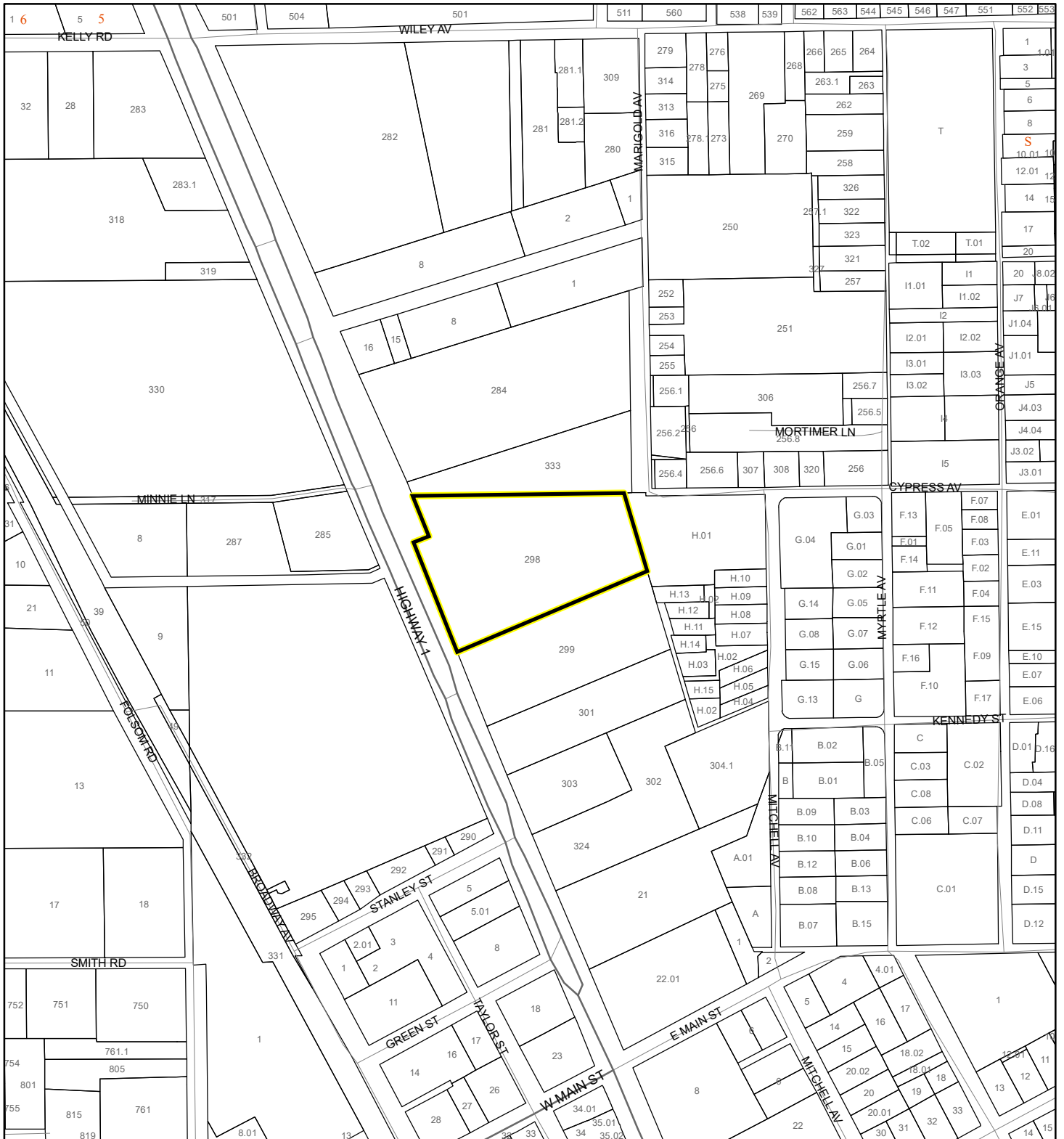
This map was compiled from recorded documents and does not reflect an actual survey. The Brevard County Board of County Commissioners does not assume responsibility for errors or omissions hereon.

Produced by BoCC - GIS Date: 1/26/2023

# SCRUB JAY OCCUPANCY MAP

DAVID C RAMAGE TRUST


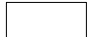

23Z00006



1:4,800 or 1 inch = 400 feet

This map was compiled from recorded documents and does not reflect an actual survey. The Brevard County Board of County Commissioners does not assume responsibility for errors or omissions hereon.

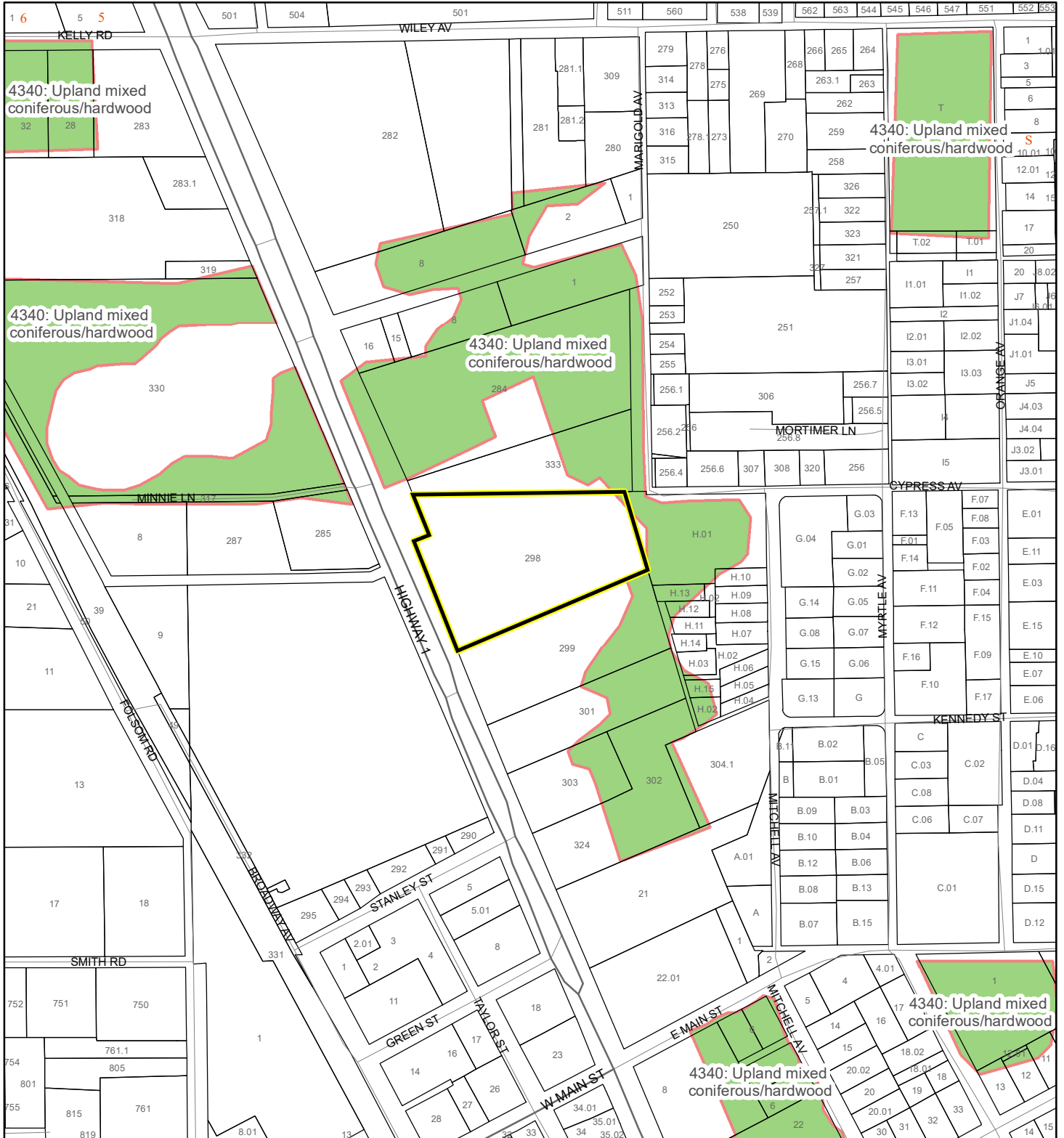
Produced by BoCC - GIS Date: 1/26/2023

-  Subject Property
-  Parcels
-  Scrub Jay Occupancy

# SJRWMD FLUCCS UPLAND FORESTS - 4000 Series MAP

DAVID C RAMAGE TRUST

23Z00006



1:4,800 or 1 inch = 400 feet

This map was compiled from recorded documents and does not reflect an actual survey. The Brevard County Board of County Commissioners does not assume responsibility for errors or omissions hereon.

Produced by BoCC - GIS Date: 1/26/2023

## SJRWMD FLUCCS Upland Forests

- Upland Coniferous Forest - 4100 Series
- Upland Hardwood Forest - 4200 Series
- Upland Mixed Forest - 4300 Series
- Tree Plantations - 4400 Series

Subject Property

Parcels