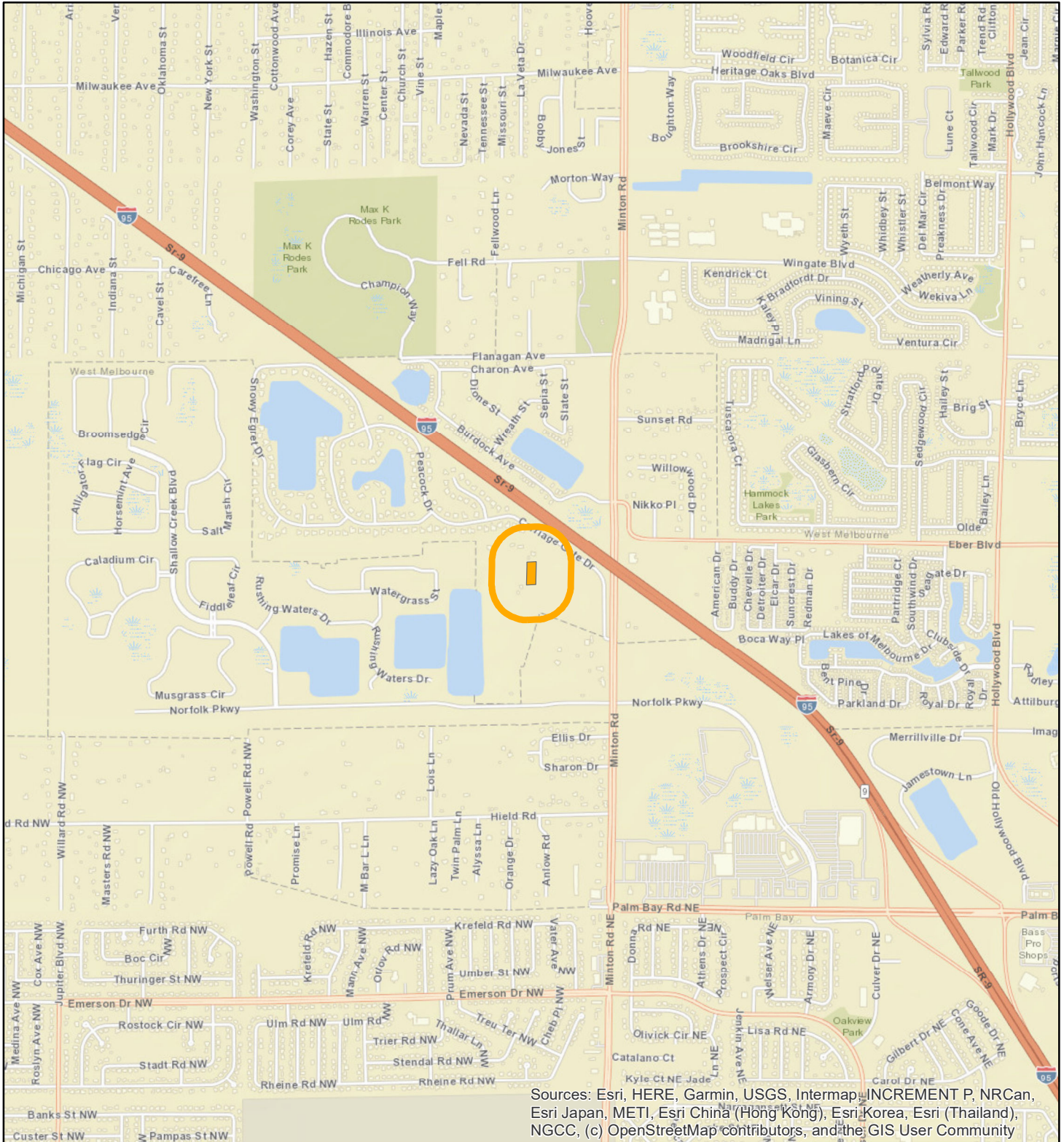


LOCATION MAP

FOSTER FAMILY LIVING TRUST

25Z00053





1:24,000 or 1 inch = 2,000 feet

Buffer Distance: 500 feet

This map was compiled from recorded documents and does not reflect an actual survey. The Brevard County Board of County Commissioners does not assume responsibility for errors or omissions hereon.

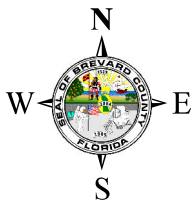
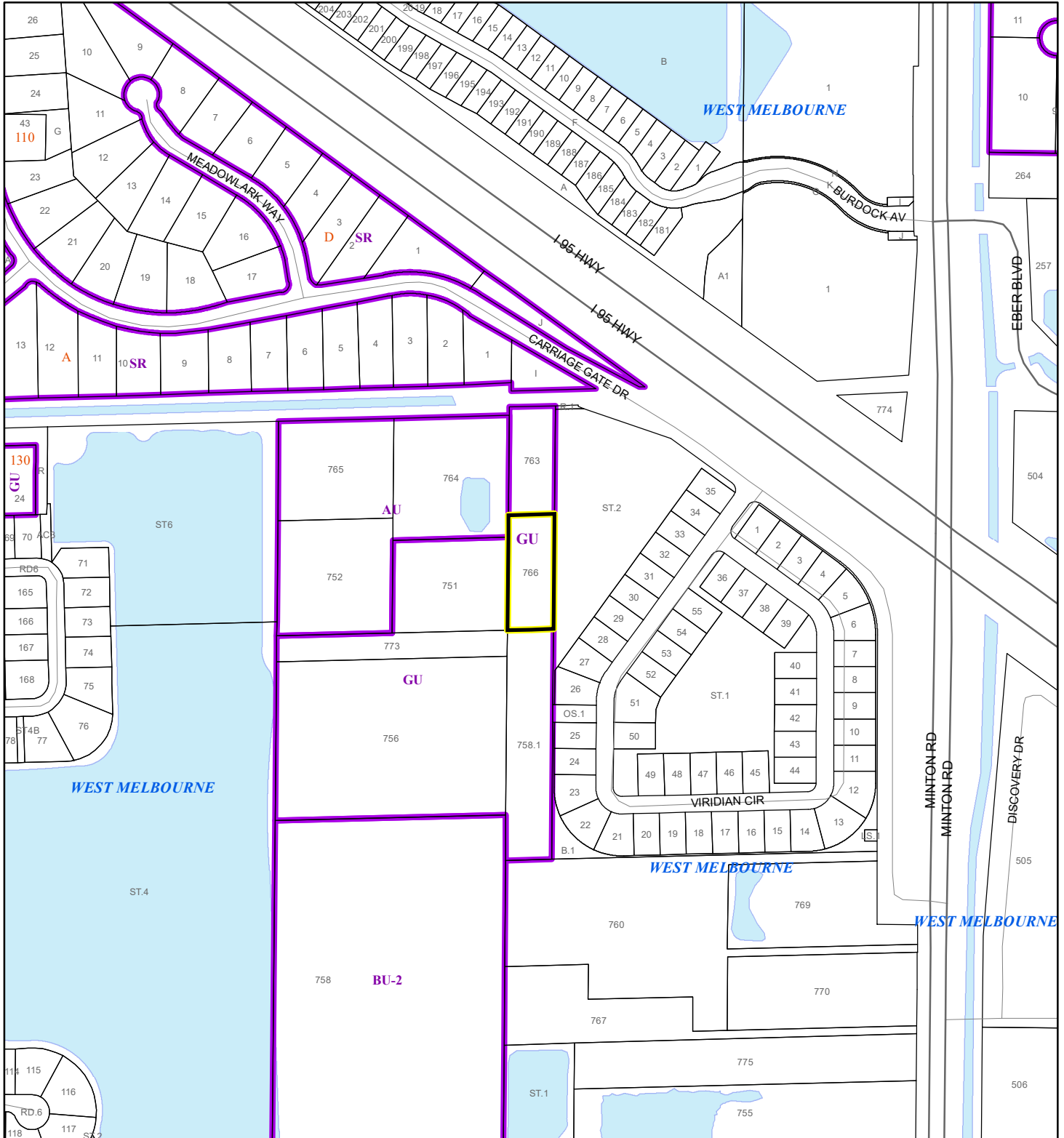
Produced by BoCC - GIS Date: 11/17/2025

 Buffer
 Subject Property

ZONING MAP

FOSTER FAMILY LIVING TRUST

25Z00053



1:4,800 or 1 inch = 400 feet

This map was compiled from recorded documents and does not reflect an actual survey. The Brevard County Board of County Commissioners does not assume responsibility for errors or omissions hereon.

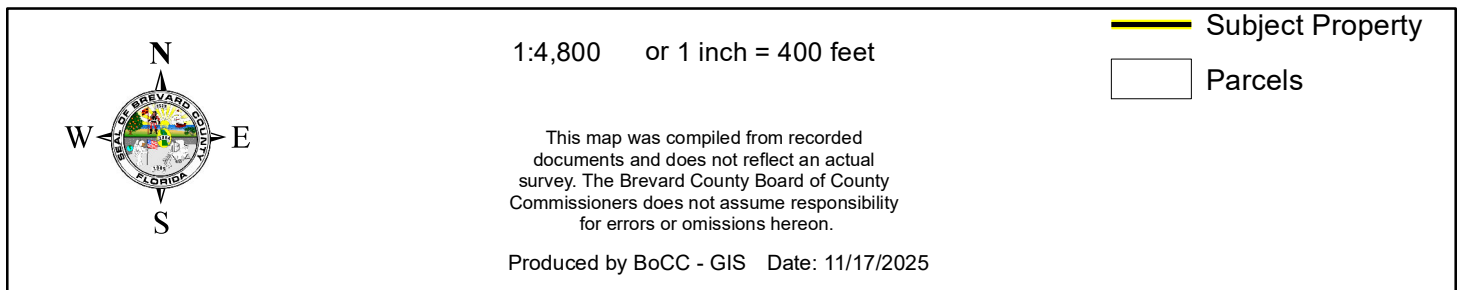
Produced by BoCC - GIS Date: 11/17/2025

Subject Property

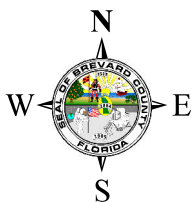
Parcels

Zoning

25Z00053



AERIAL MAP
FOSTER FAMILY LIVING TRUST
25Z00053





1:2,400 or 1 inch = 200 feet

PHOTO YEAR: 2025

This map was compiled from recorded documents and does not reflect an actual survey. The Brevard County Board of County Commissioners does not assume responsibility for errors or omissions hereon.

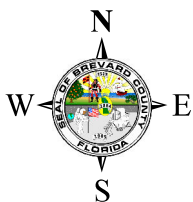
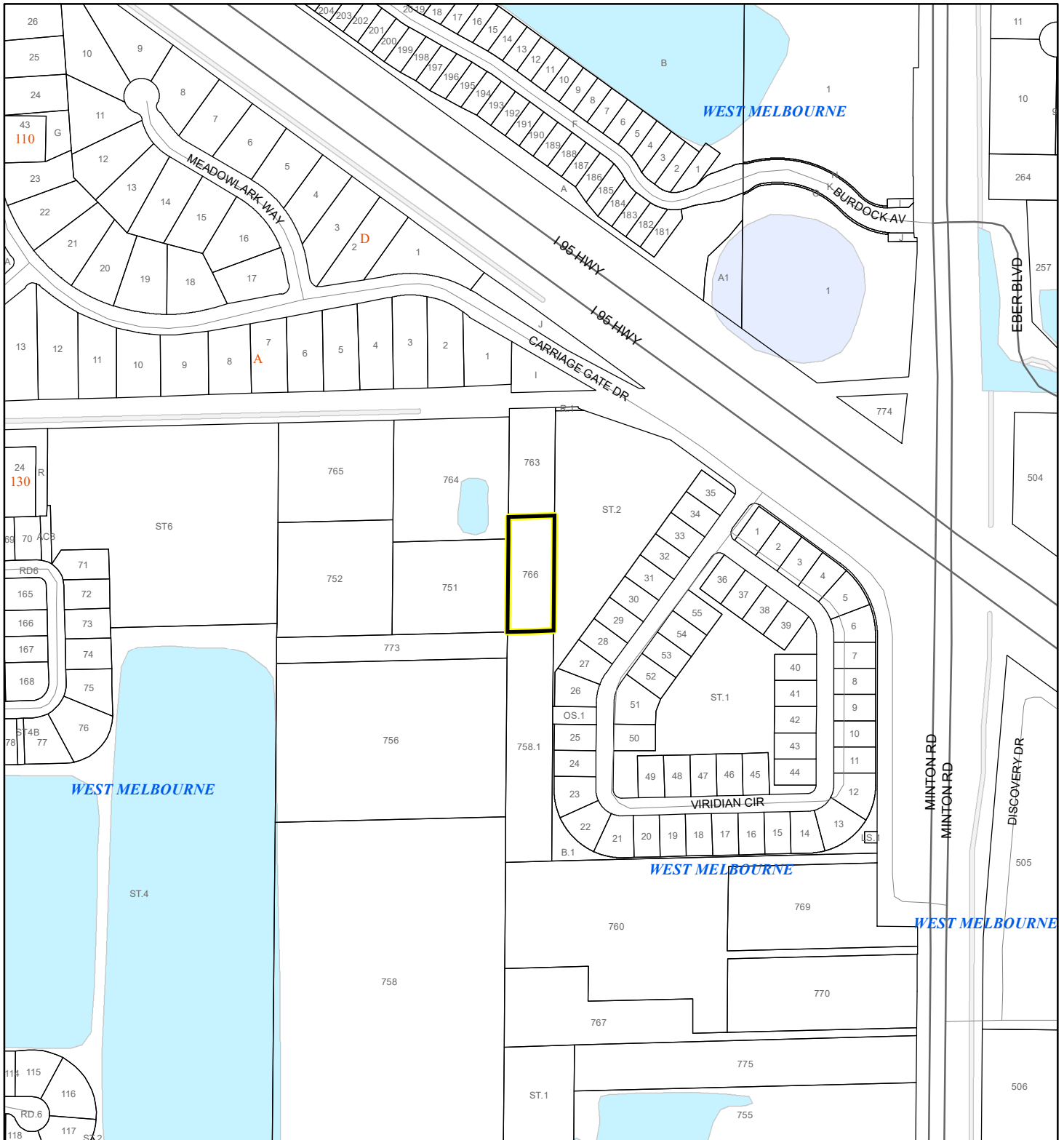
Produced by BoCC - GIS Date: 11/17/2025

 Subject Property
 Parcels

NWI WETLANDS MAP

FOSTER FAMILY LIVING TRUST

25Z00053






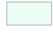

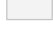

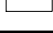


1:4,800 or 1 inch = 400 feet

This map was compiled from recorded documents and does not reflect an actual survey. The Brevard County Board of County Commissioners does not assume responsibility for errors or omissions hereon.

Produced by BoCC - GIS Date: 11/17/2025

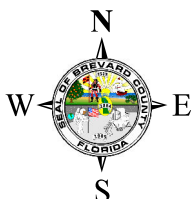
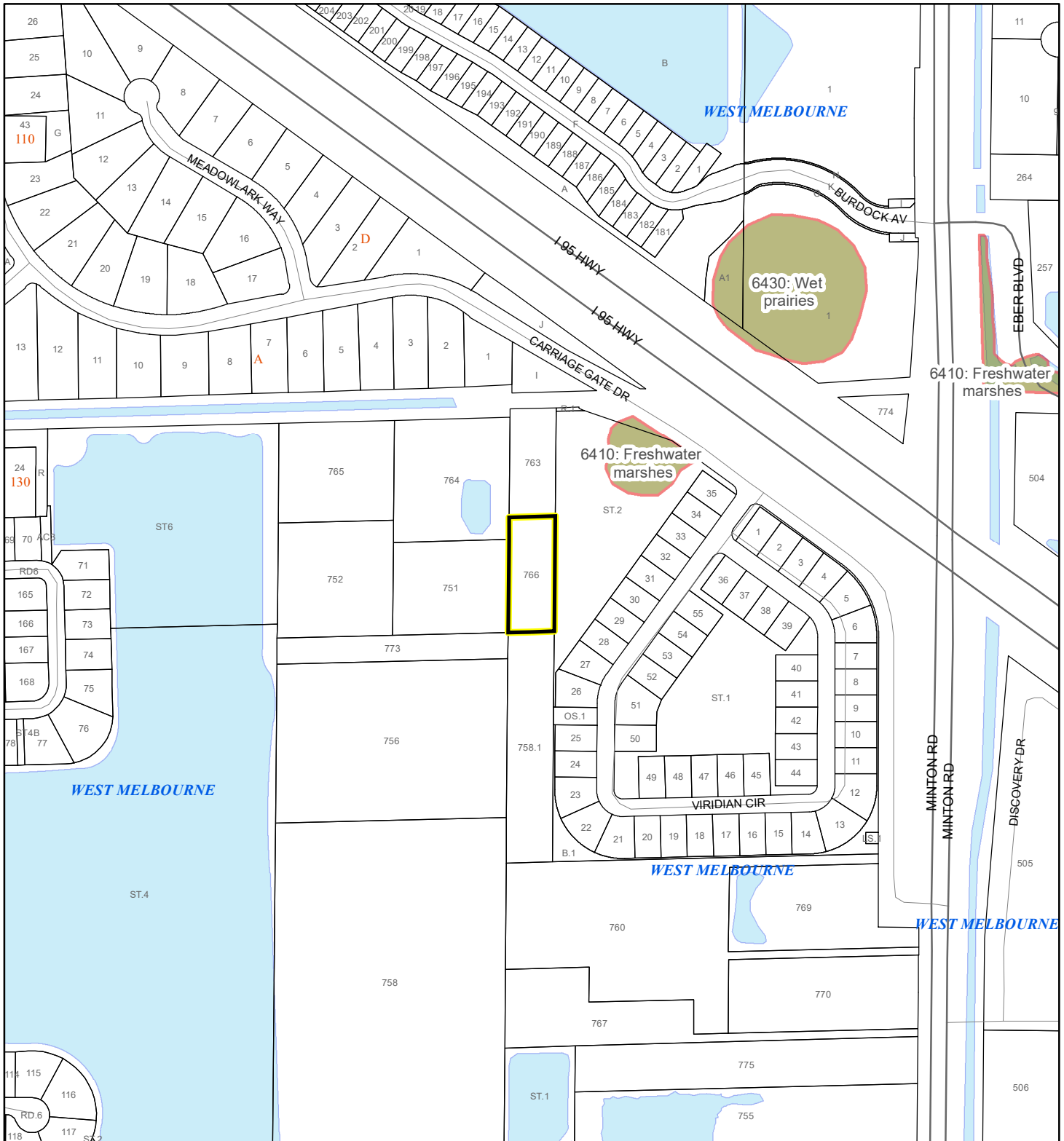
National Wetlands Inventory (NWI)

 Estuarine and Marine Deepwater	 Freshwater Pond
 Estuarine and Marine Wetland	 Lake
 Freshwater Emergent Wetland	 Other
 Freshwater Forested/Shrub Wetland	 Riverine
	 Subject Property
	 Parcels

SJRWMD FLUCCS WETLANDS - 6000 Series MAP

FOSTER FAMILY LIVING TRUST

25Z00053



1:4,800 or 1 inch = 400 feet

This map was compiled from recorded documents and does not reflect an actual survey. The Brevard County Board of County Commissioners does not assume responsibility for errors or omissions hereon.

Produced by BoCC - GIS Date: 11/17/2025

SJRWMD FLUCCS WETLANDS

- Wetland Hardwood Forests - Series 6100
- Wetland Coniferous Forest - Series 6200
- Wetland Forested Mixed - Series 6300
- Vegetated Non-Forested Wetlands - Series 6400
- Non-Vegetated Wetland - Series 6500

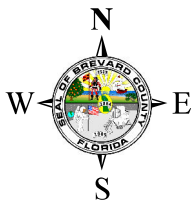
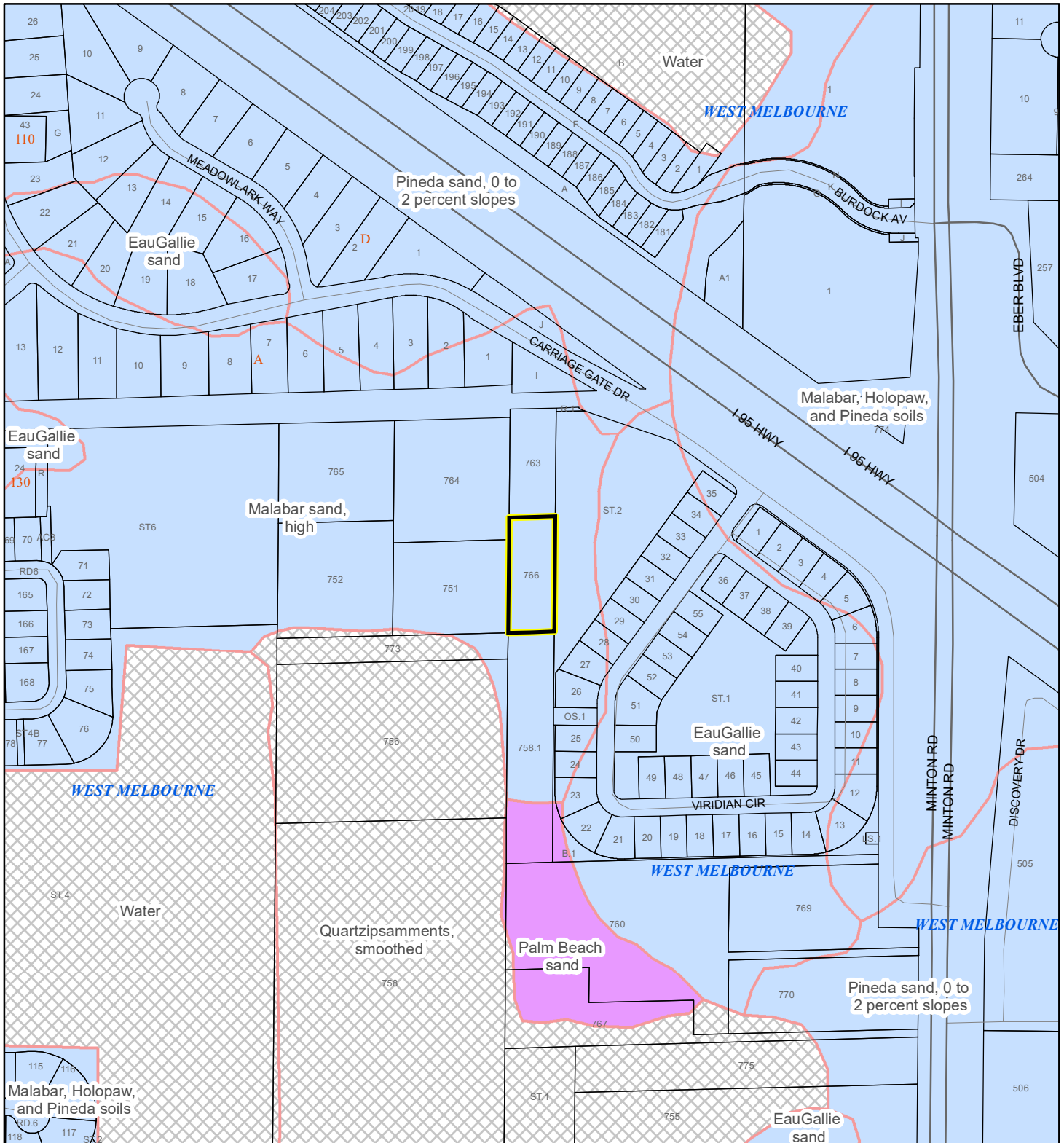
Subject Property

Parcels

USDA SCSSS SOILS MAP

FOSTER FAMILY LIVING TRUST

25Z00053



1:4,800 or 1 inch = 400 feet

This map was compiled from recorded documents and does not reflect an actual survey. The Brevard County Board of County Commissioners does not assume responsibility for errors or omissions hereon.

Produced by BoCC - GIS Date: 11/17/2025

USDA SCSSS Soils

- Aquifer and Hydric
- Aquifer
- Hydric
- None

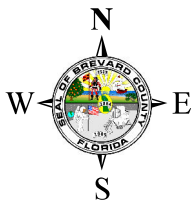
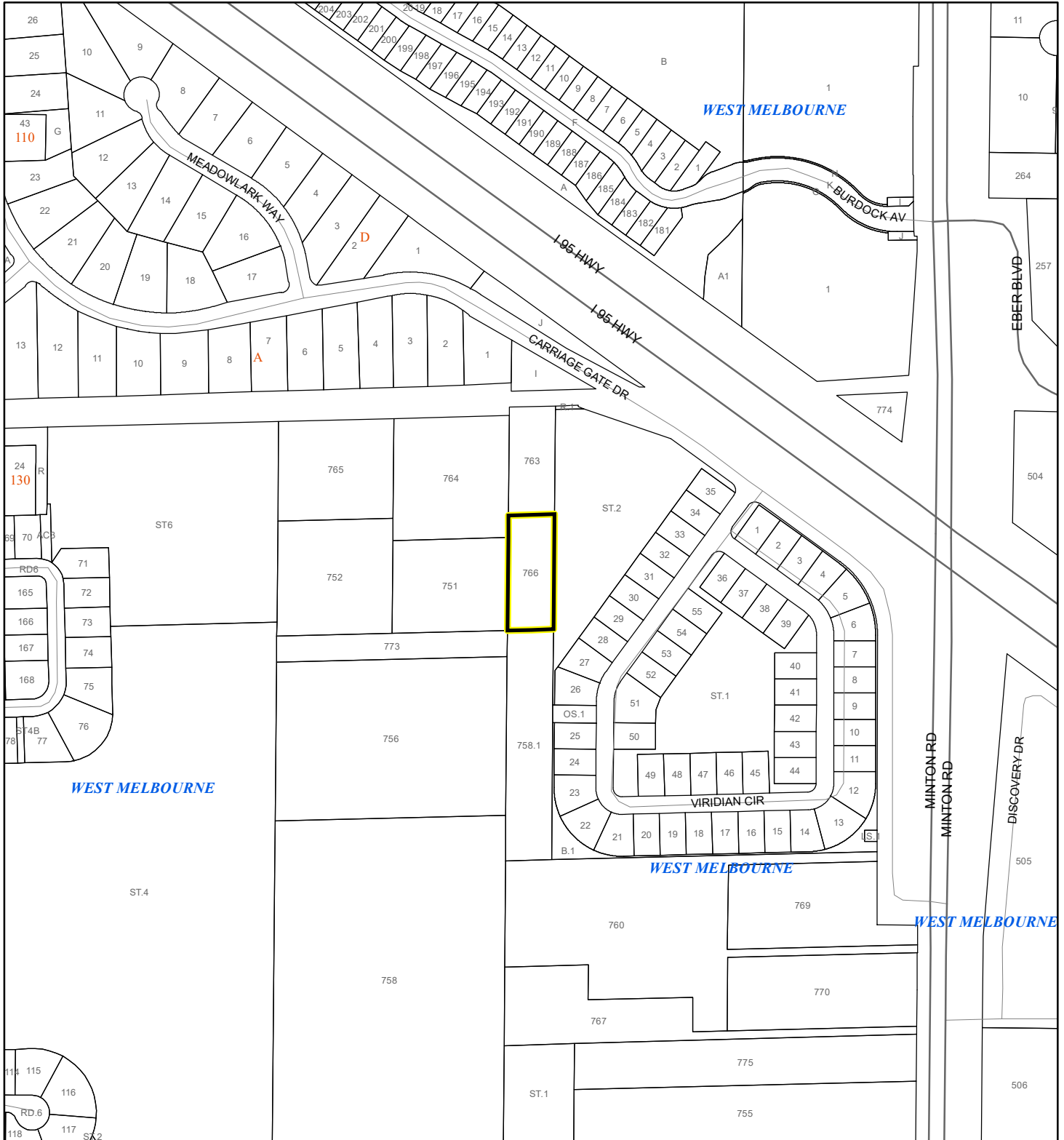
Subject Property

Parcels

FEMA FLOOD ZONES MAP

FOSTER FAMILY LIVING TRUST

25Z00053



1:4,800 or 1 inch = 400 feet

This map was compiled from recorded documents and does not reflect an actual survey. The Brevard County Board of County Commissioners does not assume responsibility for errors or omissions hereon.

Produced by BoCC - GIS Date: 11/17/2025

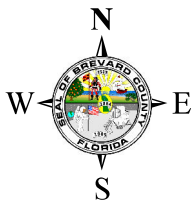
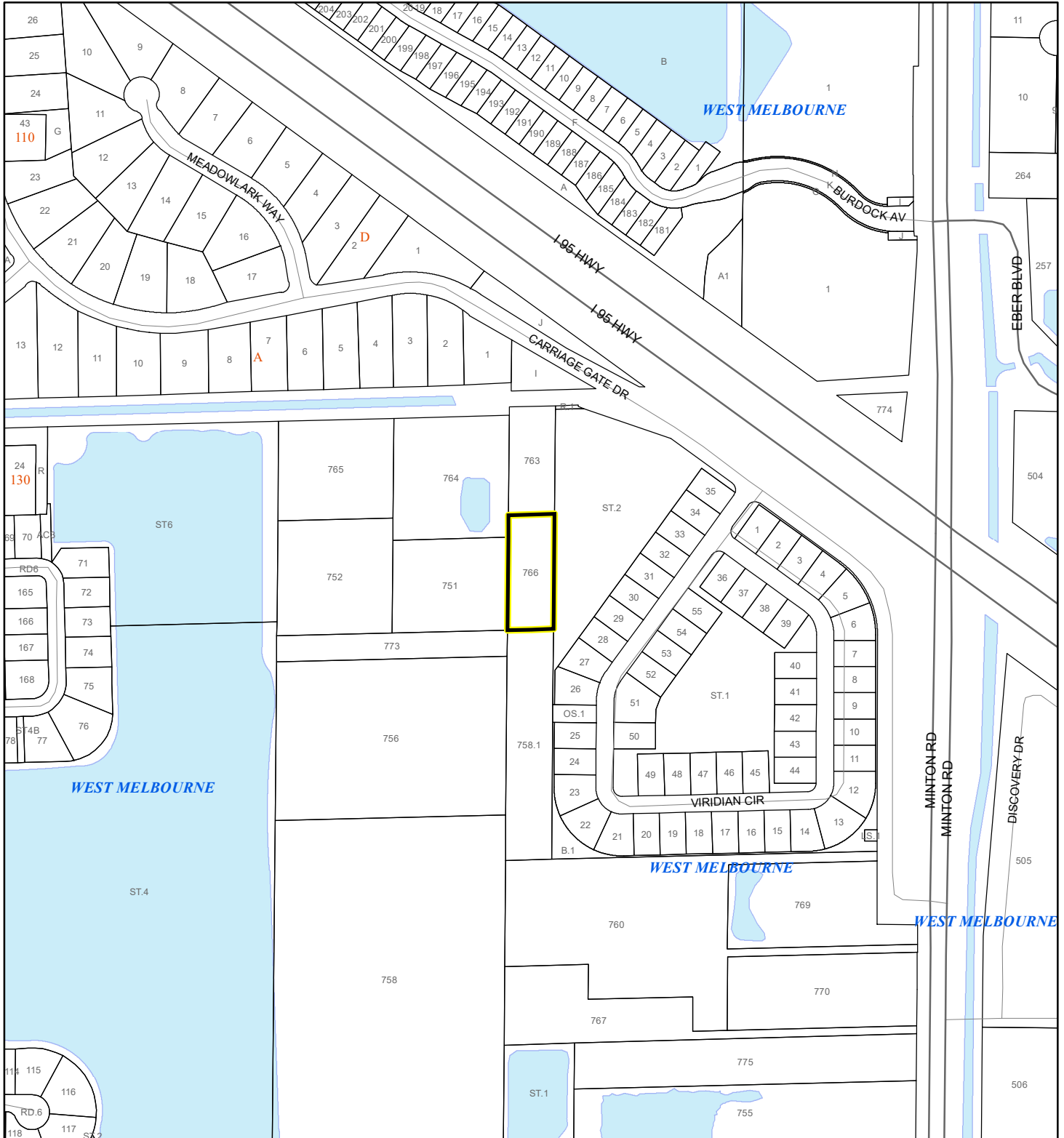
FEMA Flood Zones

A	AO	X
AE	Open Water	
AH	VE	
Subject Property	Parcels	

COASTAL HIGH HAZARD AREA MAP

FOSTER FAMILY LIVING TRUST

25Z00053



1:4,800 or 1 inch = 400 feet


This map was compiled from recorded documents and does not reflect an actual survey. The Brevard County Board of County Commissioners does not assume responsibility for errors or omissions hereon.

Produced by BoCC - GIS Date: 11/17/2025

 Subject Property

 Parcels

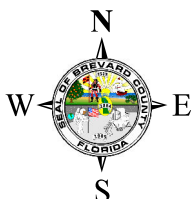
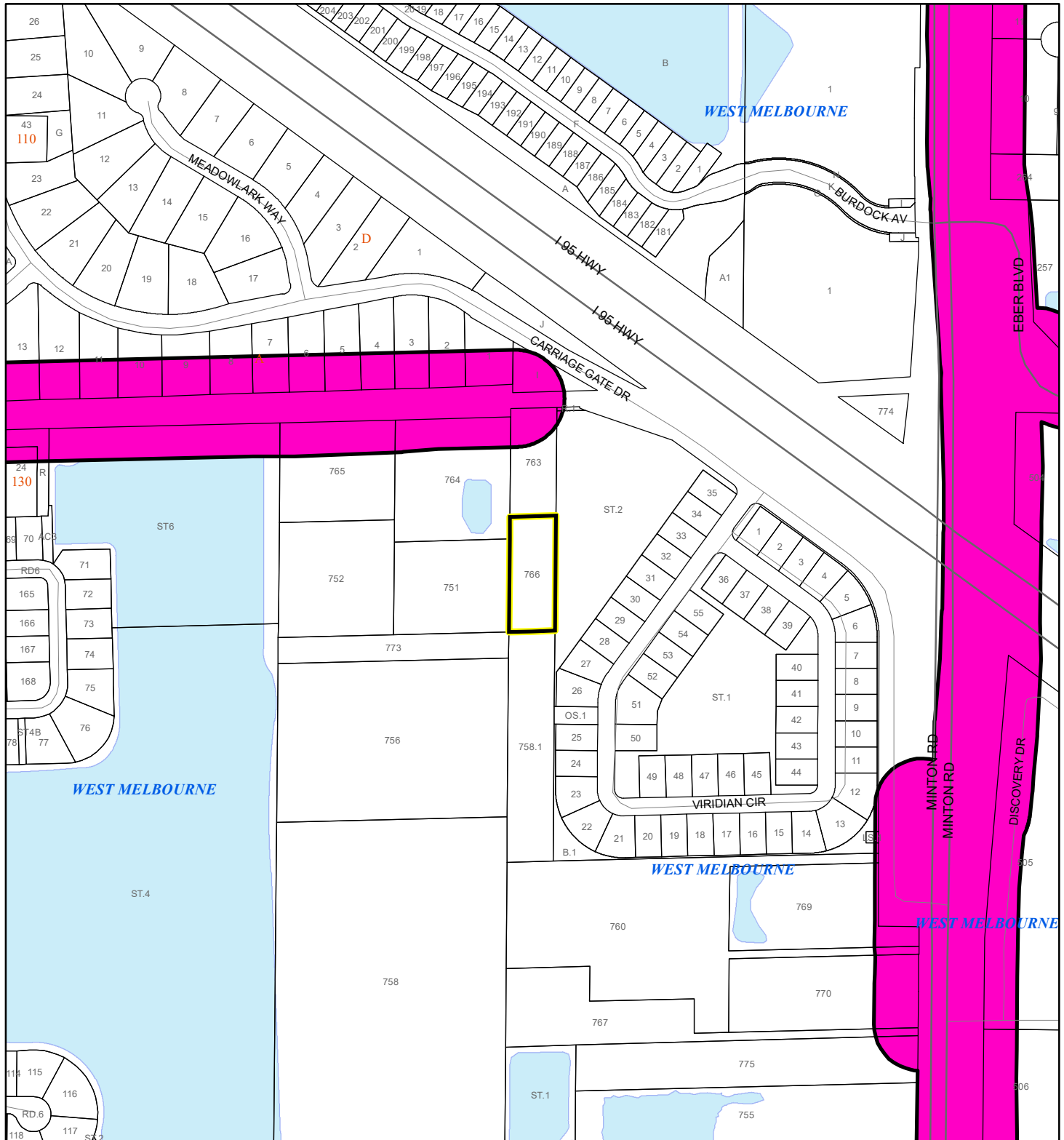
Coastal High Hazard Area

 SurgeZoneCat1

INDIAN RIVER LAGOON SEPTIC OVERLAY MAP

FOSTER FAMILY LIVING TRUST

25Z00053



1:4,800 or 1 inch = 400 feet

This map was compiled from recorded documents and does not reflect an actual survey. The Brevard County Board of County Commissioners does not assume responsibility for errors or omissions hereon.

Produced by BoCC - GIS Date: 11/17/2025

 Subject Property

 Parcels

Septic Overlay

 40 Meters

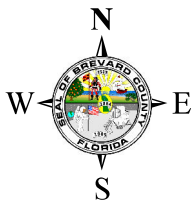
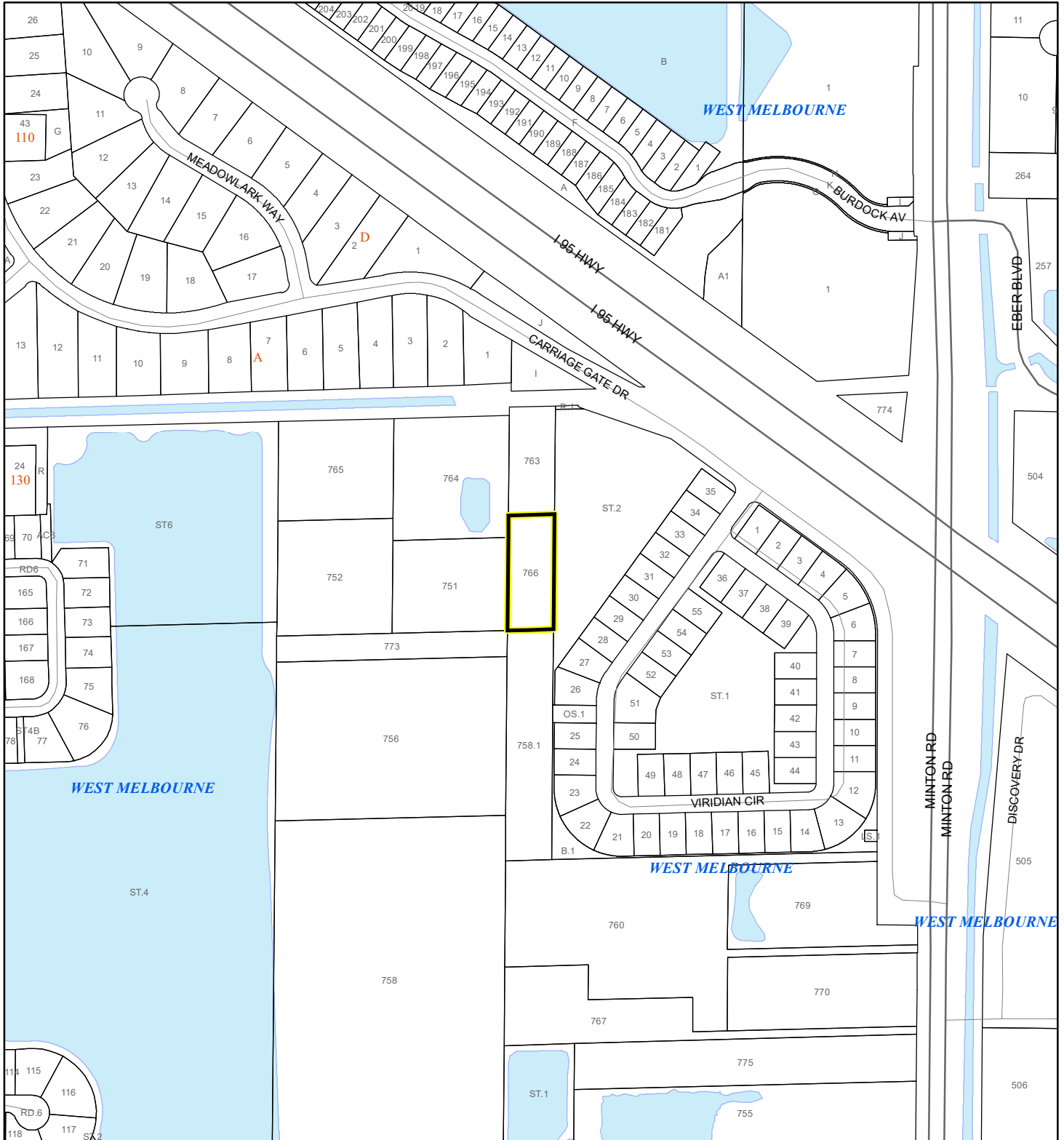
 60 Meters

 All Distances

EAGLE NESTS MAP

FOSTER FAMILY LIVING TRUST

25Z00053



1:4,800 or 1 inch = 400 feet

This map was compiled from recorded documents and does not reflect an actual survey. The Brevard County Board of County Commissioners does not assume responsibility for errors or omissions hereon.

Produced by BoCC - GIS Date: 11/17/2025

 Subject Property

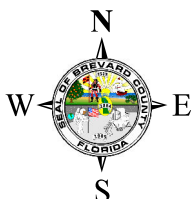
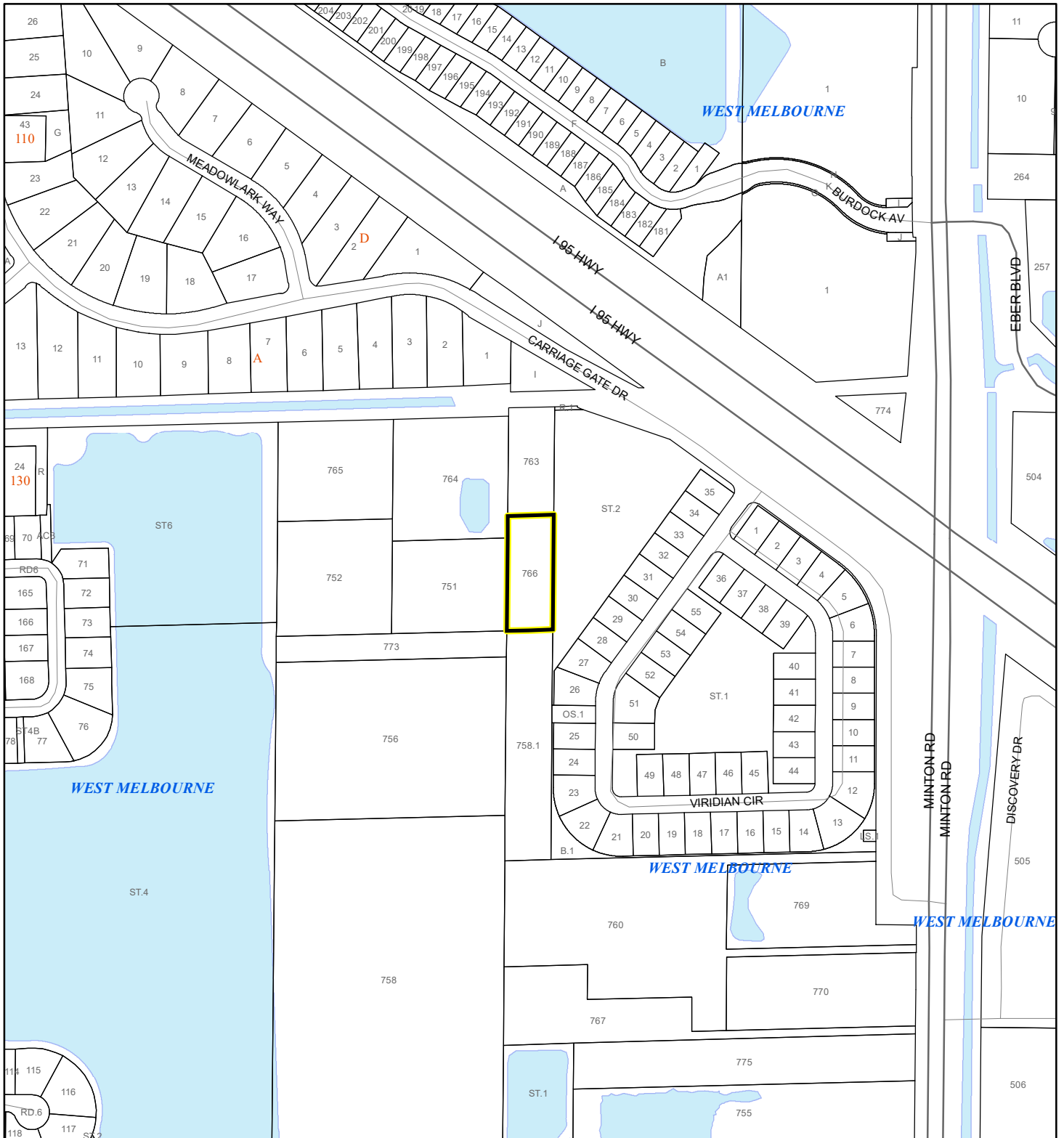
 Parcels

 Eagle Nests
FWS

SCRUB JAY OCCUPANCY MAP

FOSTER FAMILY LIVING TRUST


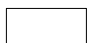

25Z00053



1:4,800 or 1 inch = 400 feet

This map was compiled from recorded documents and does not reflect an actual survey. The Brevard County Board of County Commissioners does not assume responsibility for errors or omissions hereon.

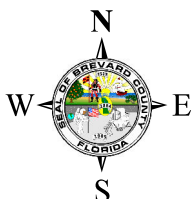
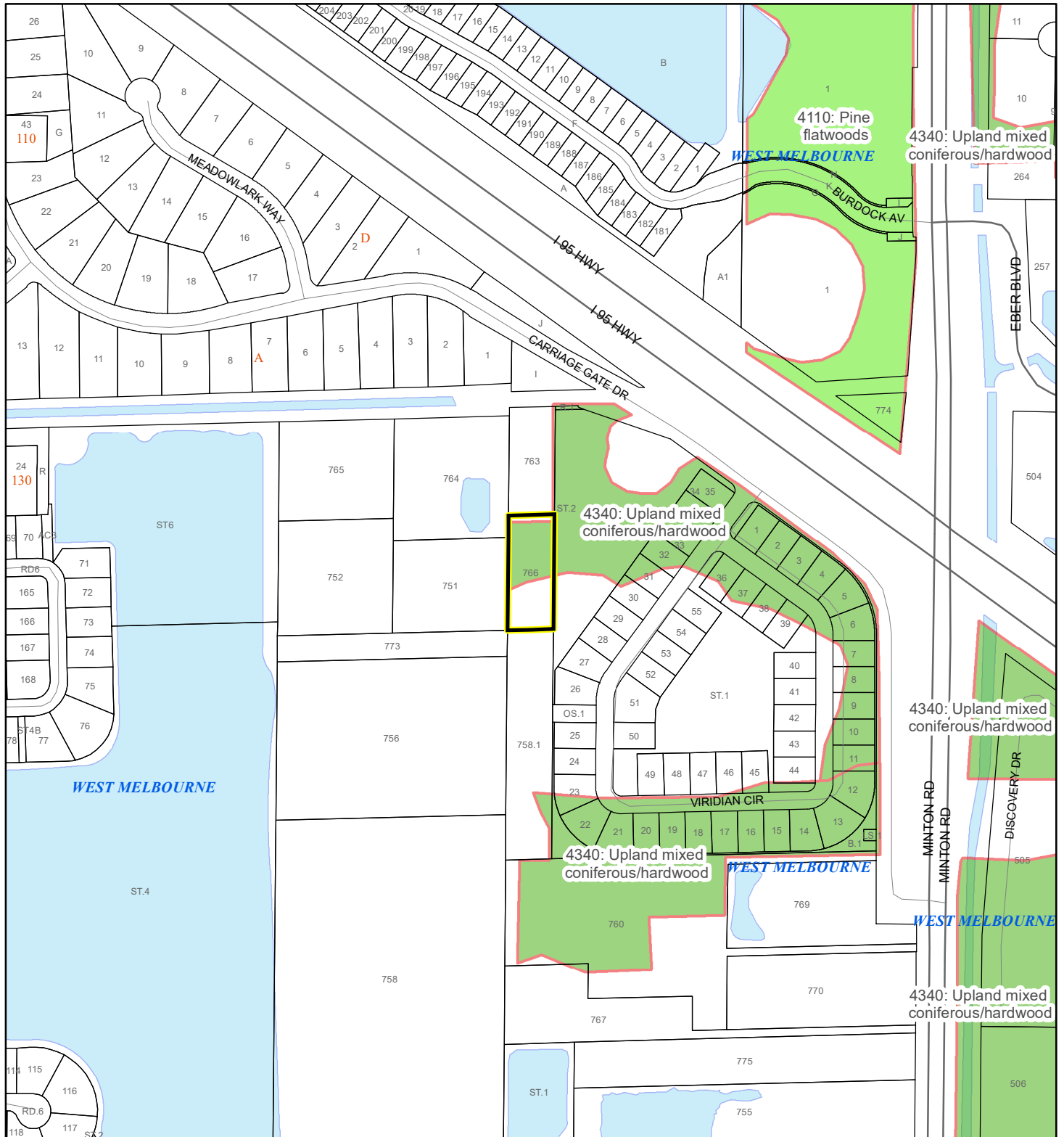
Produced by BoCC - GIS Date: 11/17/2025

-  Subject Property
-  Parcels
-  Scrub Jay Occupancy

SJRWMD FLUCCS UPLAND FORESTS - 4000 Series MAP

FOSTER FAMILY LIVING TRUST

25Z00053



1:4,800 or 1 inch = 400 feet

This map was compiled from recorded documents and does not reflect an actual survey. The Brevard County Board of County Commissioners does not assume responsibility for errors or omissions hereon.

Produced by BoCC - GIS Date: 11/17/2025

SJRWMD FLUCCS Upland Forests

- Upland Coniferous Forest - 4100 Series
- Upland Hardwood Forest - 4200 Series
- Upland Mixed Forest - 4300 Series
- Tree Plantations - 4400 Series

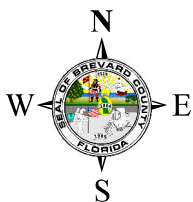
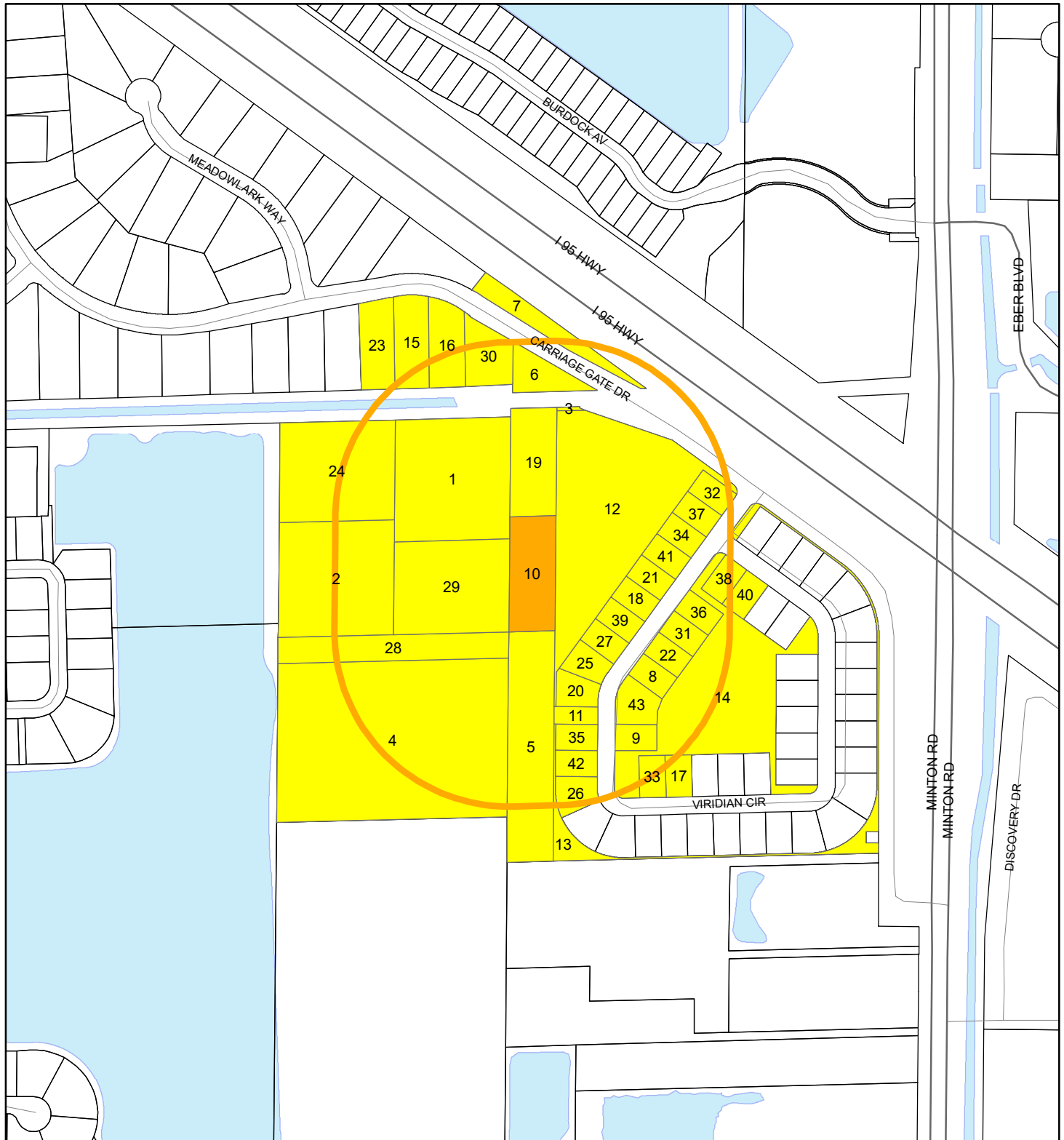
Subject Property

Parcels

RADIUS MAP

FOSTER FAMILY LIVING TRUST

25Z00053



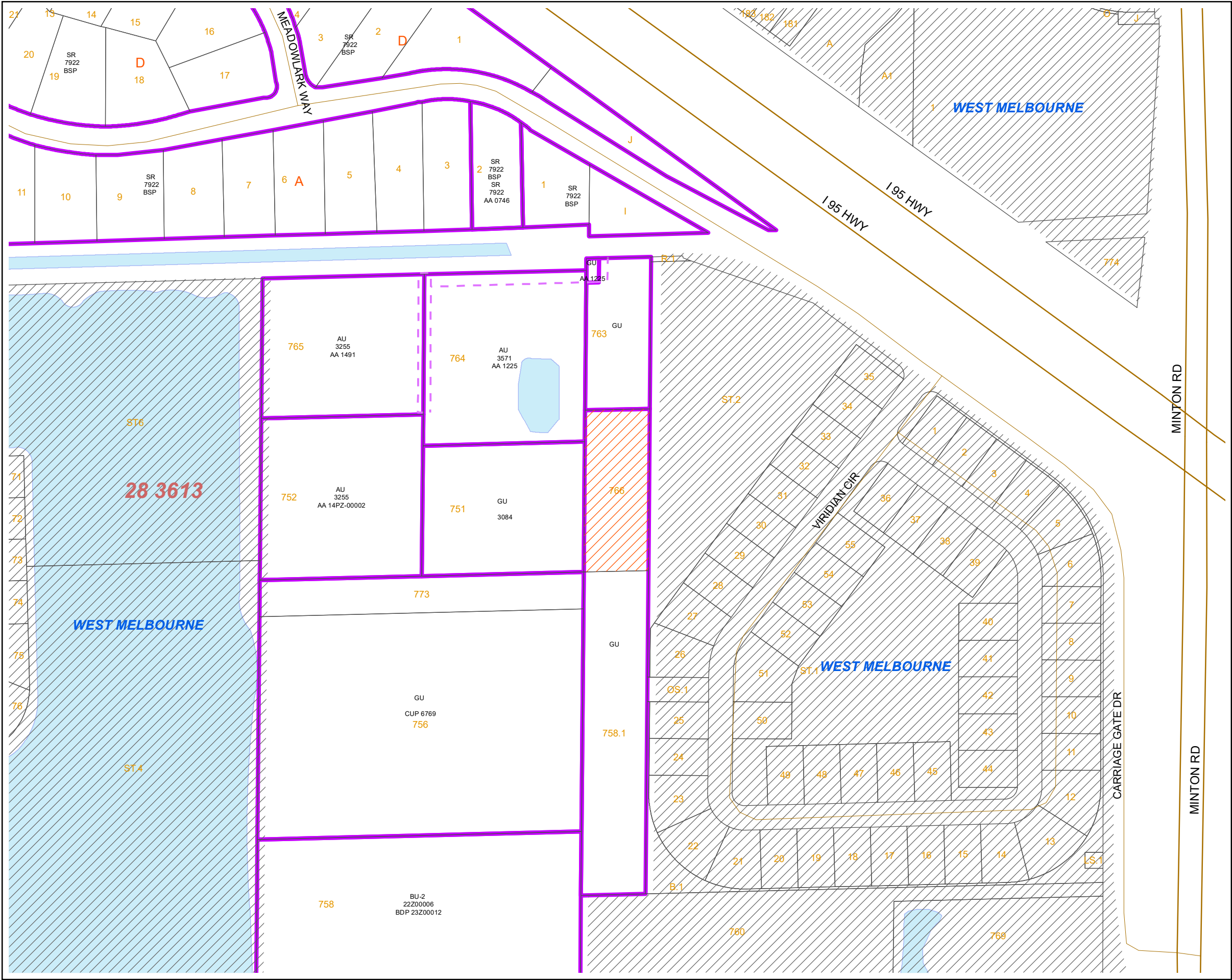
1:4,800 or 1 inch = 400 feet

Buffer Distance: 500 feet

This map was compiled from recorded documents and does not reflect an actual survey. The Brevard County Board of County Commissioners does not assume responsibility for errors or omissions hereon.

Produced by BoCC - GIS Date: 11/17/2025

- Buffer
- Subject Property
- Notify Property
- Parcels



TOWNSHIP 28, RANGE 36, SECTION 13

25Z00053

Brevard County Official Planning & Development Map

Legend

- Subject Property
- TwnRng_Lines
- Sections
- Parcels
- Streets
- Zoning Easements
- Zoning Actions
- Municipality

DISCLAIMER AND TERMS OF USE:

The official version of the Brevard County Zoning Map and Future Land Use Map can be viewed during regular business hours at the Brevard County Planning and Development Department, 321-633-2070, 2725 Judge Fran Jamieson Way, Bldg A-114, Viera, FL 32940.

Data is provided "as-is" without any warranty or representation that the data is accurate, timely or complete. The County makes no warranty, express or implied, that the data, graphics and maps presented are up-to-date or that the information shown is reliable for the viewer's intended purposes or uses. The viewer acknowledges and accepts the above limitations on the data portrayed and acknowledges that the data shown is dynamic and is in a constant state of maintenance, correction and update.

Though this map purports to depict properties within the unincorporated area of Brevard County, Florida, the County does not warrant or represent that the map has been updated to show properties that may have been annexed or included within the boundaries of one or more municipalities.

This map is for display and informational purposes only. The viewer must consult the official Zoning Map or Future Land Use Map on file in the Brevard County Planning and Zoning Office for official and precise Zoning or Future Land Use configurations.

MAPS MAY NOT BE RESOLD: Data, maps or digital files are prepared by employees of Brevard County and may not be resold without prior consent from the Brevard County Board of



1 Inch = 200 Feet

Produced by Information Technology Department - GIS
Date: 11/17/2025