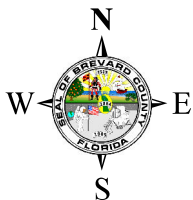
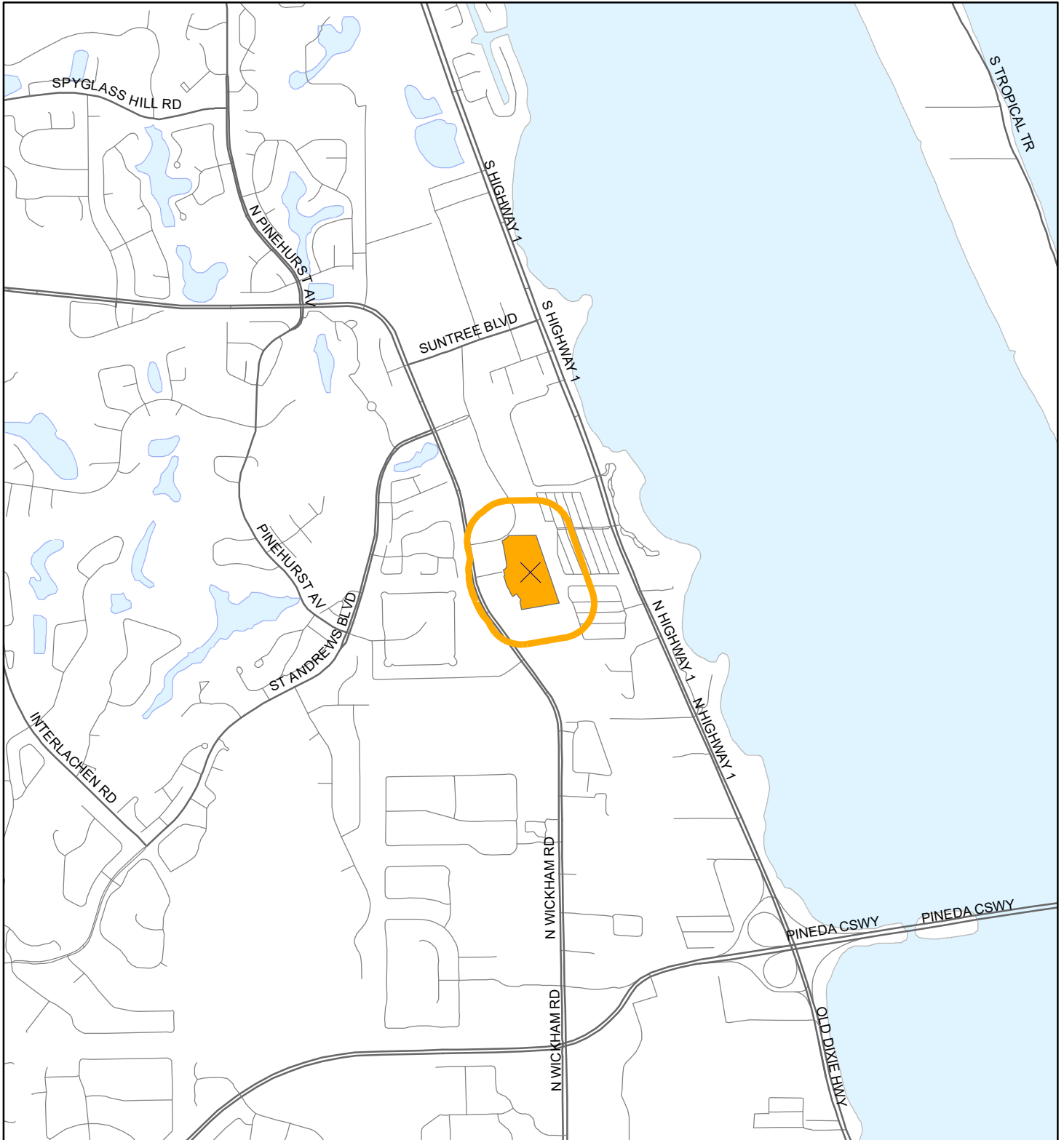


LOCATION MAP

Comprehensive Plan Amendment 2019-2.2
Brevard Medical City 19PZ00086





1:24,000 or 1 inch = 2,000 feet

Buffer Distance: 500 feet

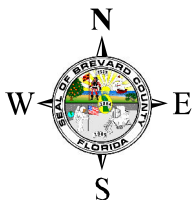
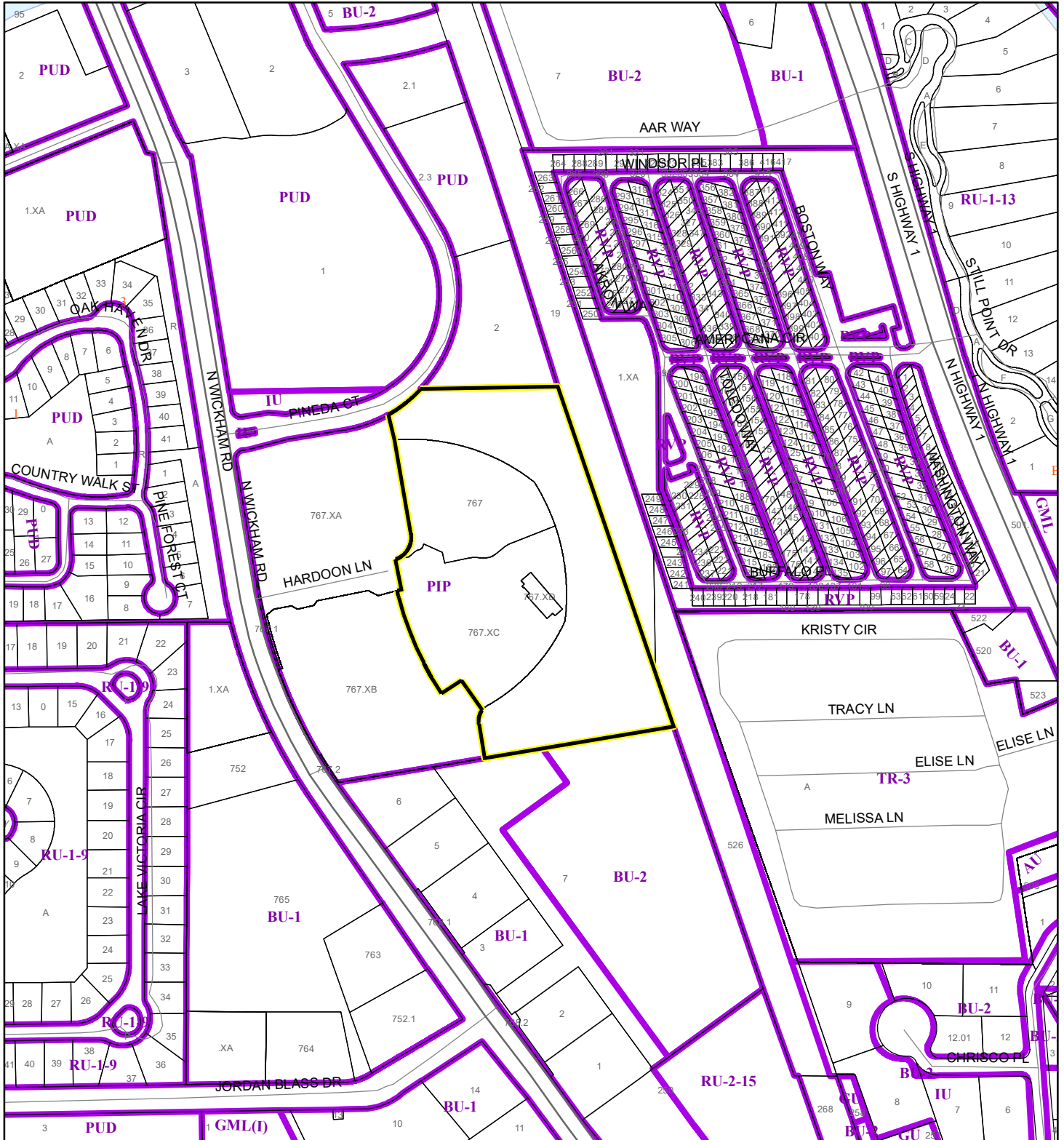
This map was compiled from recorded documents and does not reflect an actual survey. The Brevard County Board of County Commissioners does not assume responsibility for errors or omissions hereon.

Produced by BoCC - GIS Date: 8/3/2020

-  Buffer
-  Subject Property

ZONING MAP

Comprehensive Plan Amendment 2019-2.2
Brevard Medical City 19PZ00086



1:4,800 or 1 inch = 400 feet

Subject Property

Parcels

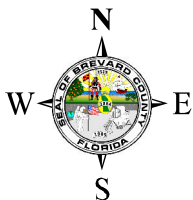
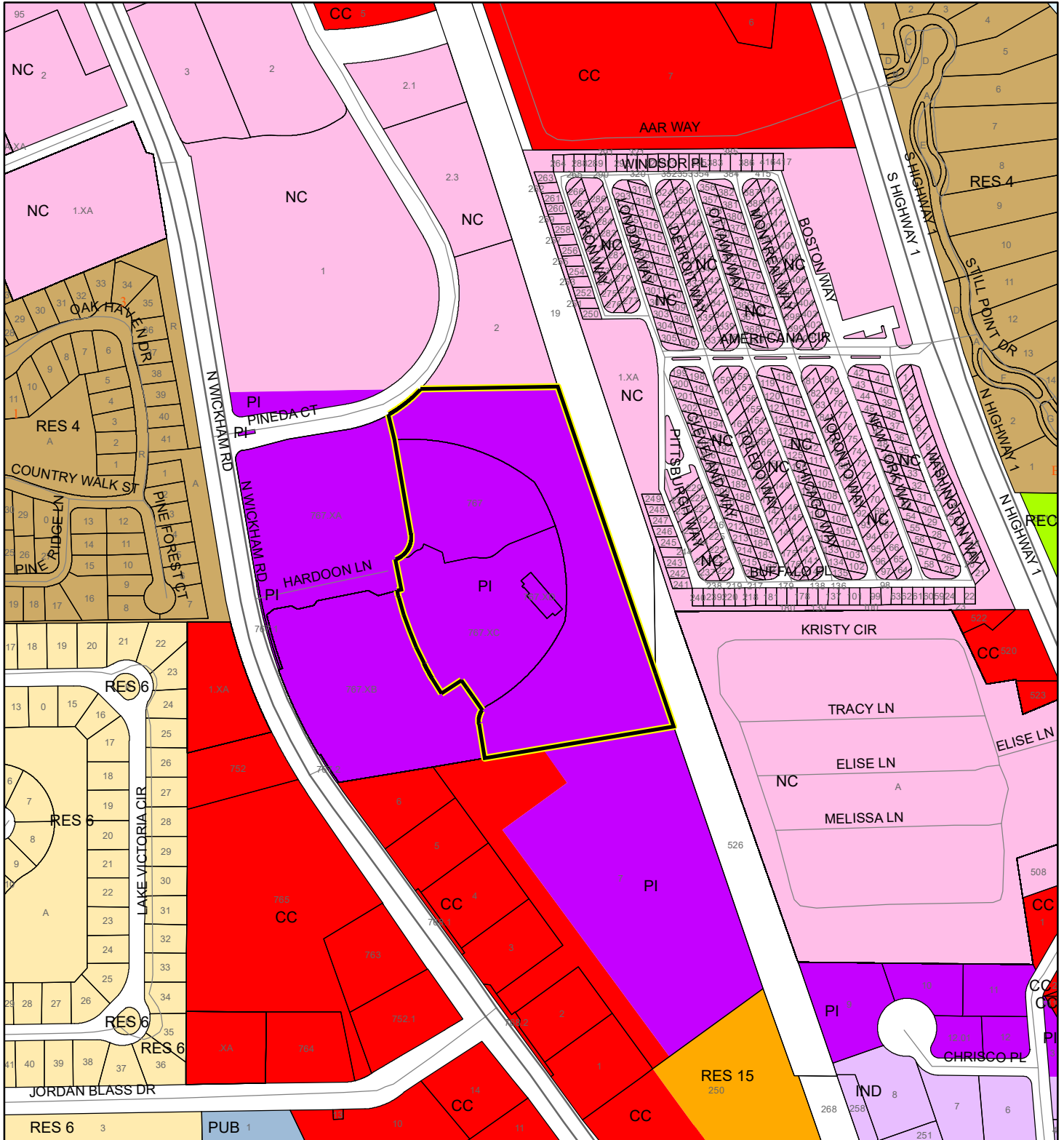
Zoning

This map was compiled from recorded documents and does not reflect an actual survey. The Brevard County Board of County Commissioners does not assume responsibility for errors or omissions hereon.



Produced by BoCC - GIS Date: 8/3/2020

FUTURE LAND USE MAP

Comprehensive Plan Amendment 2019-2.2
Brevard Medical City 19PZ00086



1:4,800 or 1 inch = 400 feet

 Subject Property
 Parcels

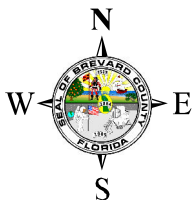
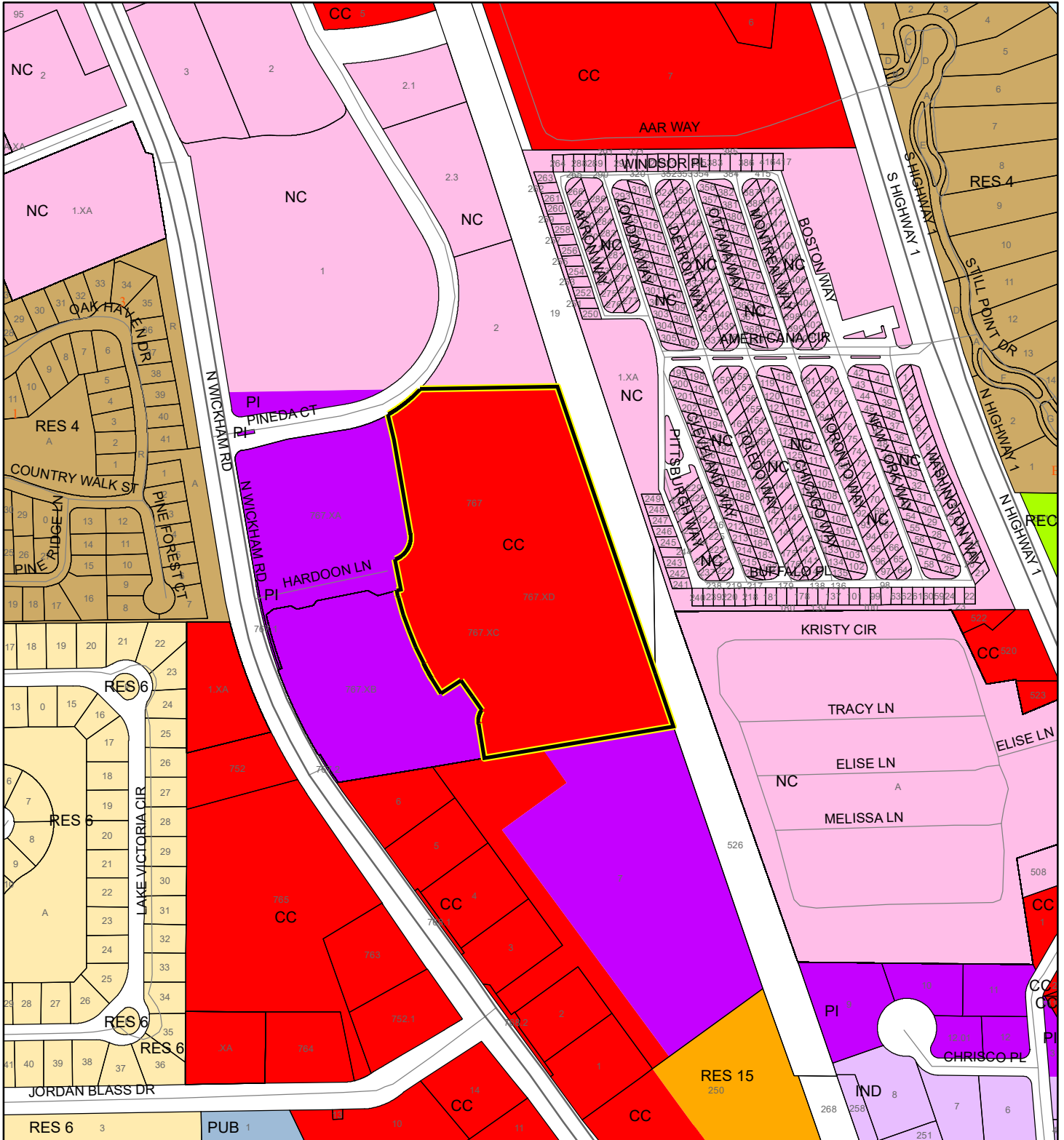
This map was compiled from recorded documents and does not reflect an actual survey. The Brevard County Board of County Commissioners does not assume responsibility for errors or omissions hereon.

Produced by BoCC - GIS Date: 8/4/2020

PROPOSED FUTURE LAND USE MAP

Comprehensive Plan Amendment 2019-2.2

Brevard Medical City 19PZ00086



1:4,800 or 1 inch = 400 feet

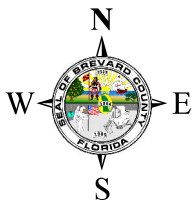
Subject Property
Parcels

This map was compiled from recorded documents and does not reflect an actual survey. The Brevard County Board of County Commissioners does not assume responsibility for errors or omissions hereon.

Produced by BoCC - GIS Date: 8/3/2020

AERIAL MAP

Comprehensive Plan Amendment 2019-2.2
Brevard Medical City 19PZ00086




1:4,800 or 1 inch = 400 feet

PHOTO YEAR: 2020

This map was compiled from recorded documents and does not reflect an actual survey. The Brevard County Board of County Commissioners does not assume responsibility for errors or omissions hereon.

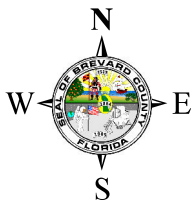
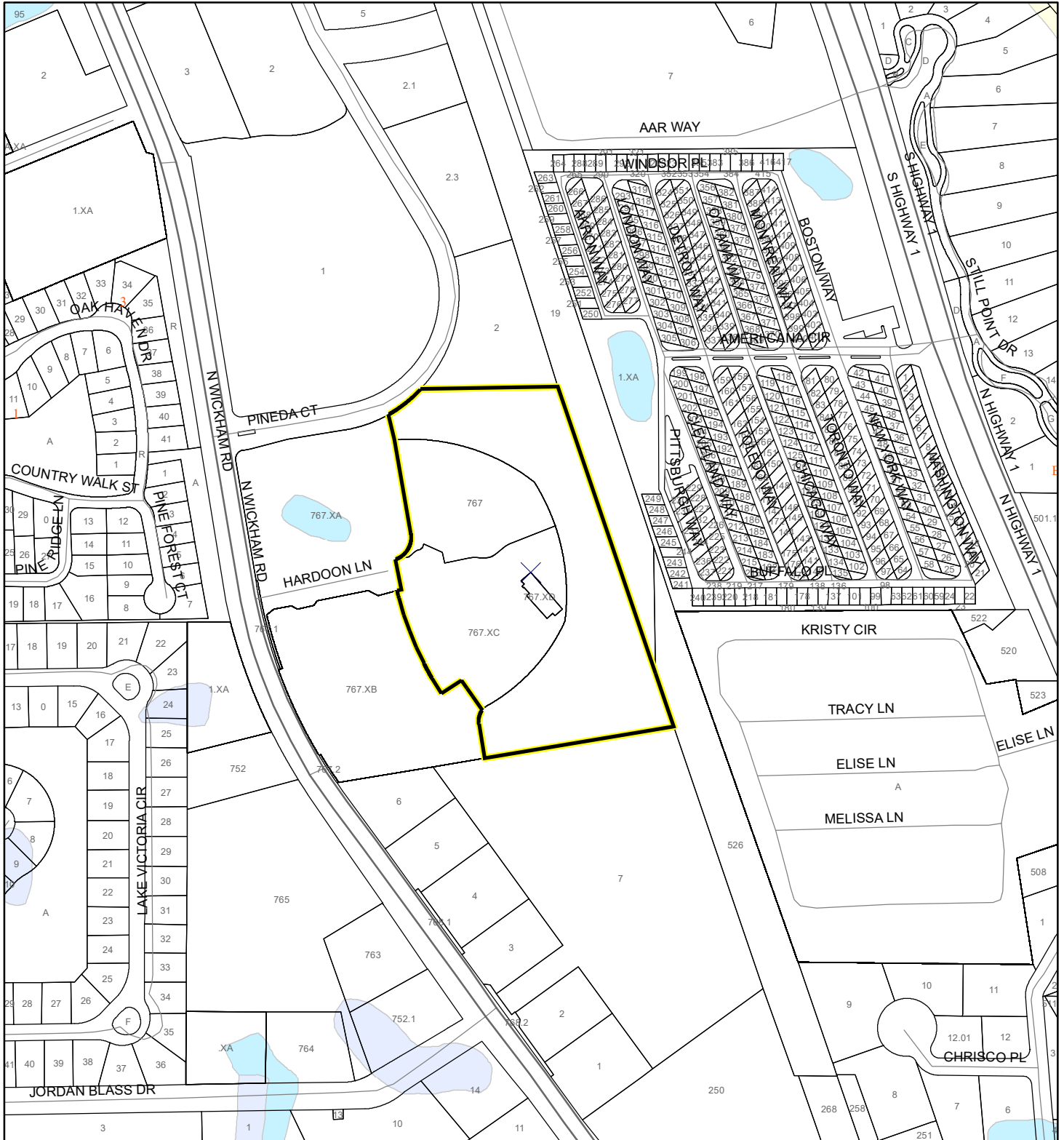
Produced by BoCC - GIS Date: 8/3/2020

 Subject Property

 Parcels

NWI WETLANDS MAP

Comprehensive Plan Amendment 2019-2.2
Brevard Medical City 19PZ00086









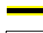
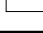


1:4,800 or 1 inch = 400 feet

This map was compiled from recorded documents and does not reflect an actual survey. The Brevard County Board of County Commissioners does not assume responsibility for errors or omissions hereon.

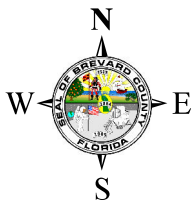
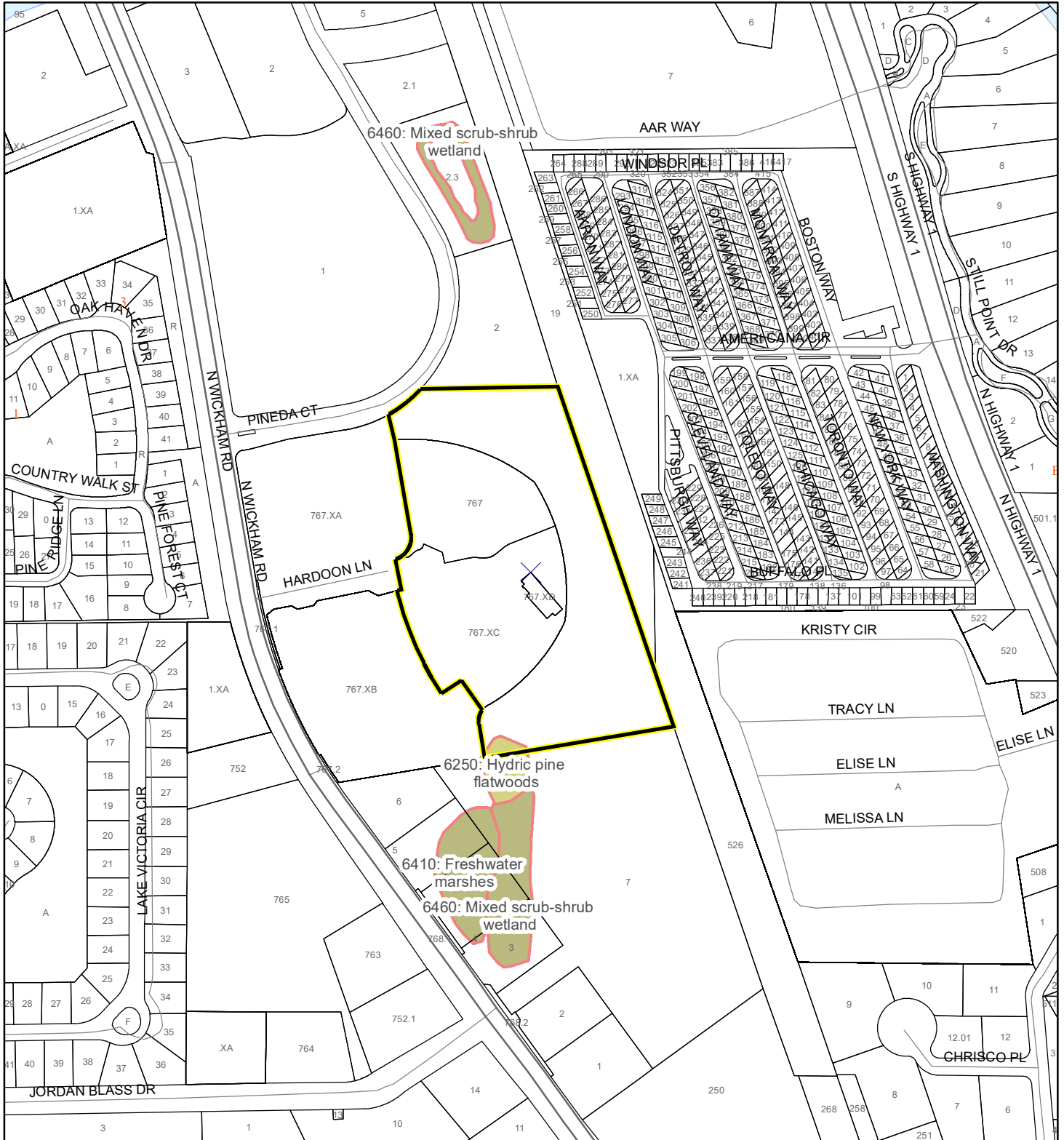
Produced by BoCC - GIS Date: 8/3/2020

National Wetlands Inventory (NWI)

- | | |
|--|--|
|  Estuarine and Marine Deepwater |  Freshwater Pond |
|  Estuarine and Marine Wetland |  Lake |
|  Freshwater Emergent Wetland |  Other |
|  Freshwater Forested/Shrub Wetland |  Riverine |
| |  Subject Property |
| |  Parcels |

SJRWMD FLUCCS WETLANDS - 6000 Series MAP

Comprehensive Plan Amendment 2019-2.2
Brevard Medical City 19PZ00086



1:4,800 or 1 inch = 400 feet

This map was compiled from recorded documents and does not reflect an actual survey. The Brevard County Board of County Commissioners does not assume responsibility for errors or omissions hereon.

Produced by BoCC - GIS Date: 8/3/2020

SJRWMD FLUCCS WETLANDS

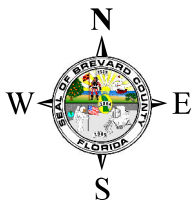
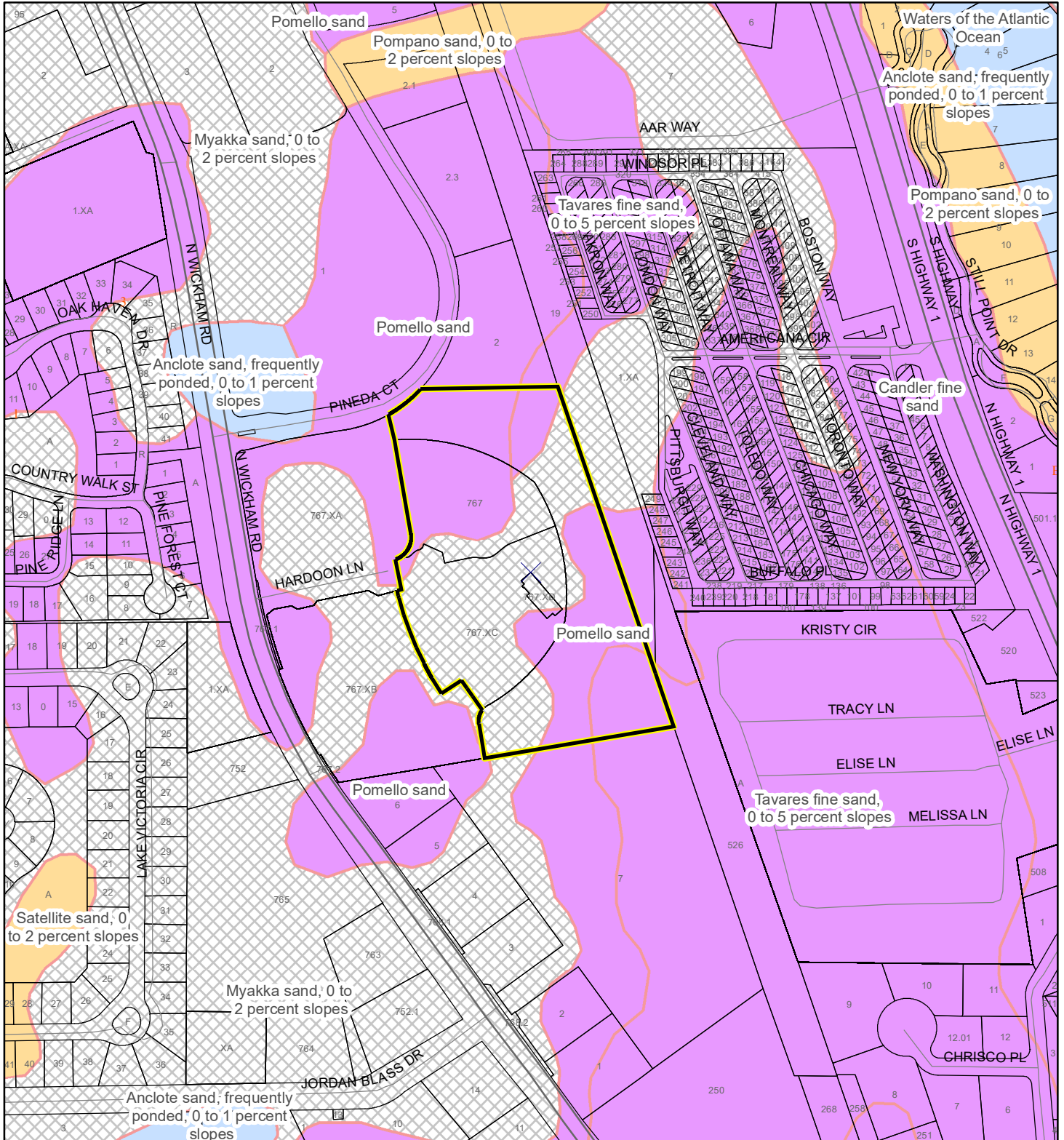
- Wetland Hardwood Forests - Series 6100
- Wetland Coniferous Forest - Series 6200
- Wetland Forested Mixed - Series 6300
- Vegetated Non-Forested Wetlands - Series 6400
- Non-Vegetated Wetland - Series 6500

Subject Property

Parcels

USDA SCSSS SOILS MAP

Comprehensive Plan Amendment 2019-2.2
Brevard Medical City 19PZ00086



1:4,800 or 1 inch = 400 feet

This map was compiled from recorded documents and does not reflect an actual survey. The Brevard County Board of County Commissioners does not assume responsibility for errors or omissions hereon.

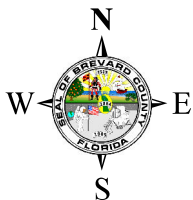
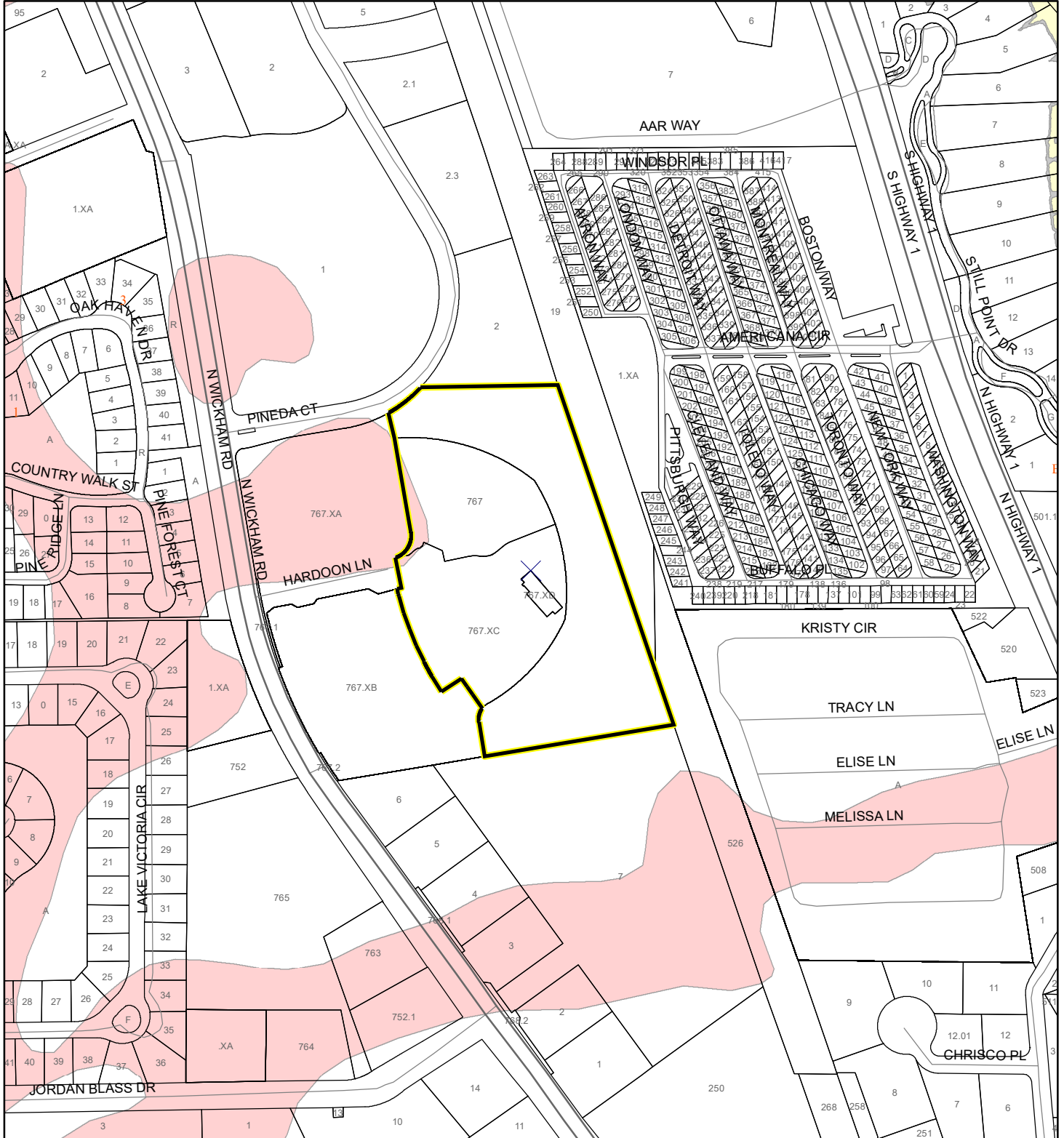
Produced by BoCC - GIS Date: 8/3/2020

USDA SCSSS Soils

- Aquifer and Hydric
- Aquifer
- Hydric
- None
- Subject Property
- Parcels

FEMA FLOOD ZONES MAP

Comprehensive Plan Amendment 2019-2.2
Brevard Medical City 19PZ00086




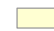

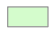





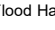


1:4,800 or 1 inch = 400 feet

This map was compiled from recorded documents and does not reflect an actual survey. The Brevard County Board of County Commissioners does not assume responsibility for errors or omissions hereon.

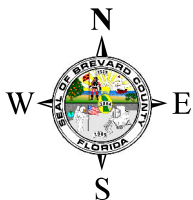
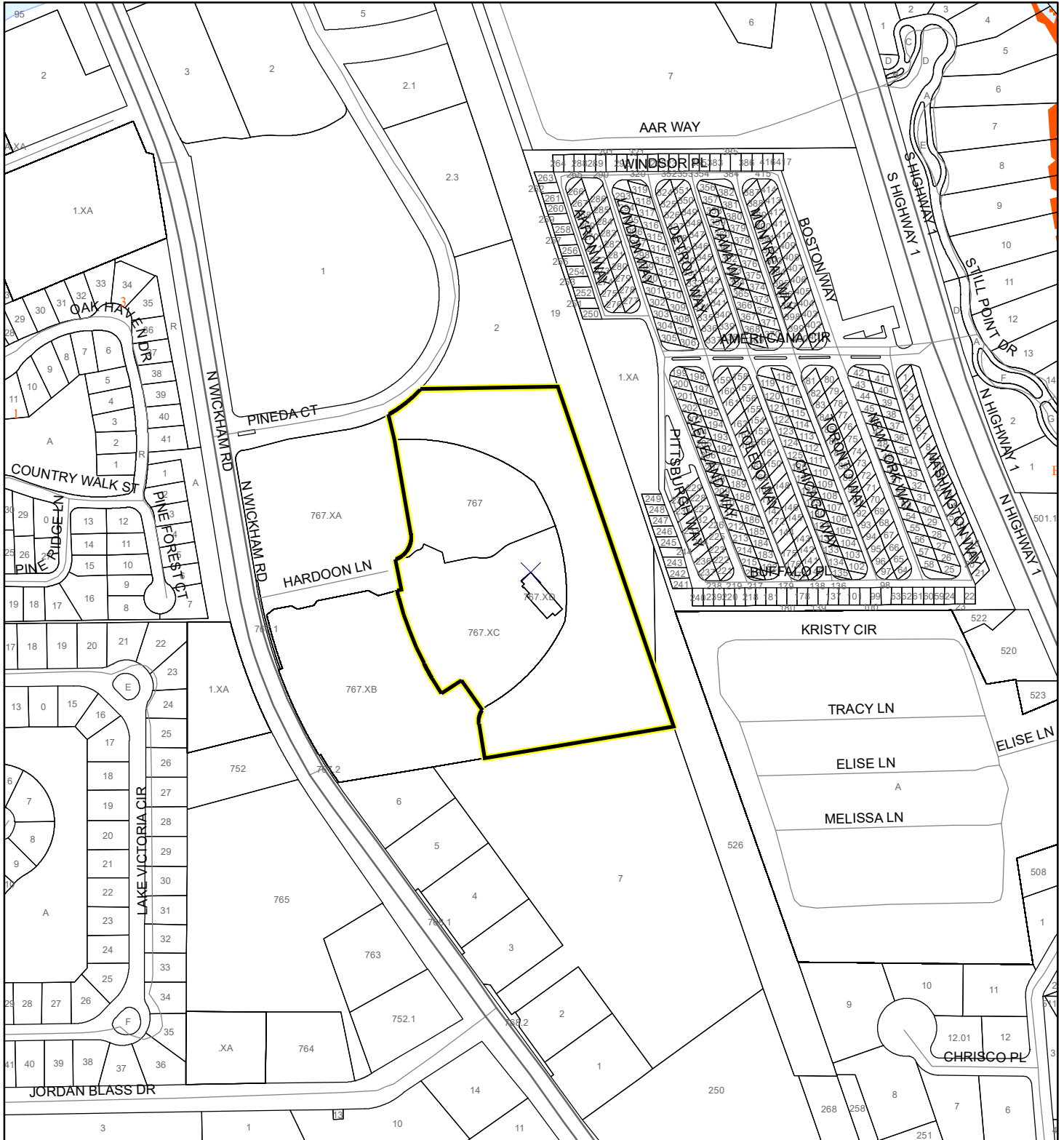
Produced by BoCC - GIS Date: 8/3/2020

FEMA Flood Zones

- | | | |
|--|---|--|
|  A |  AO |  X |
|  AE |  Open Water |  X Protected By Levee |
|  AH |  VE | |
|  0.2 Percent Annual Chance Flood Hazard |  0.2 Percent Annual Chance Flood Hazard Contained in Channel | |
|  Subject Property |  Parcels | |

COASTAL HIGH HAZARD AREA MAP

Comprehensive Plan Amendment 2019-2.2
Brevard Medical City 19PZ00086



1:4,800 or 1 inch = 400 feet


This map was compiled from recorded documents and does not reflect an actual survey. The Brevard County Board of County Commissioners does not assume responsibility for errors or omissions hereon.

Produced by BoCC - GIS Date: 8/3/2020

 Subject Property

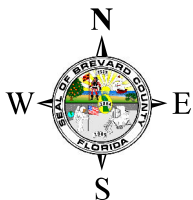
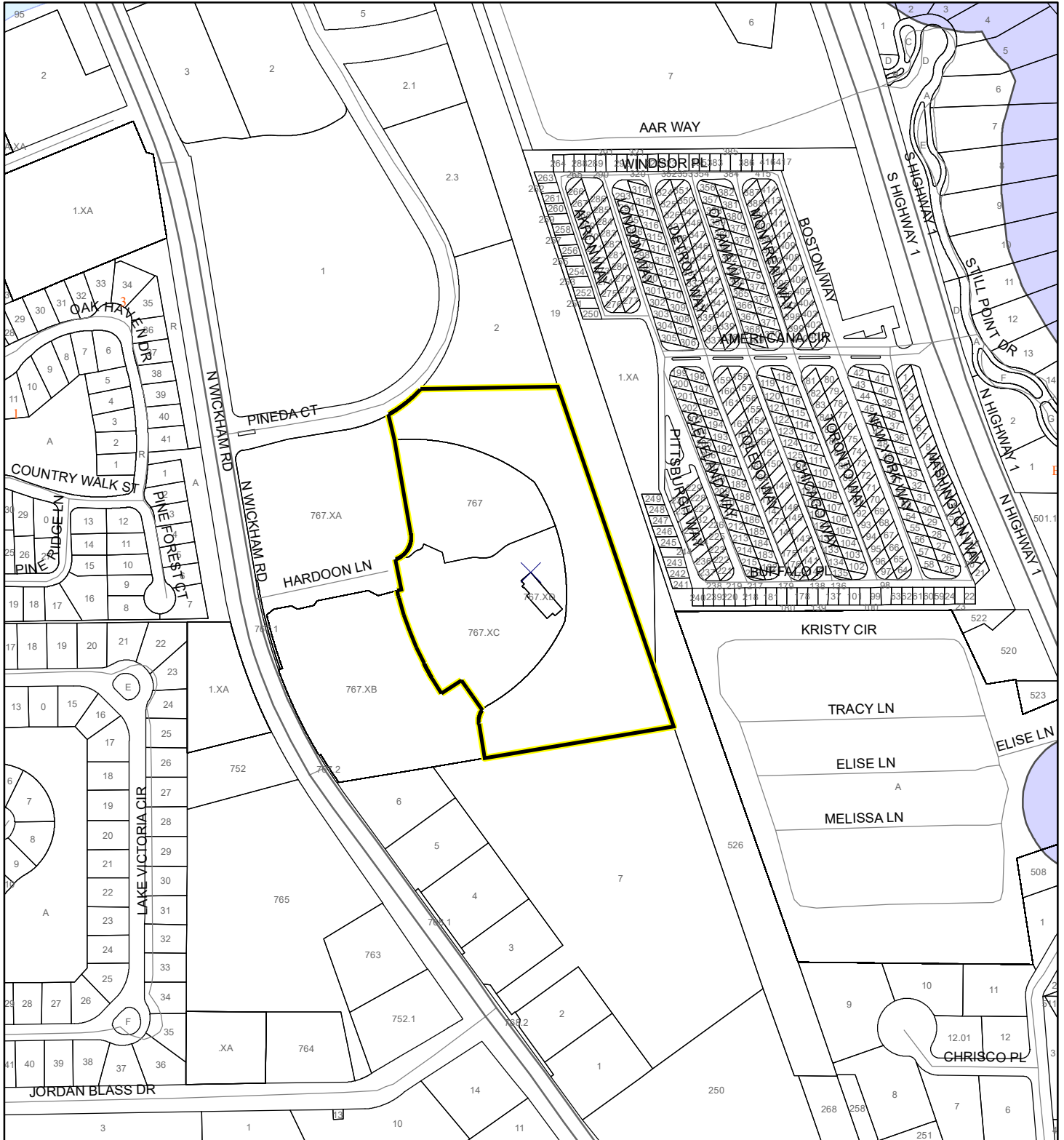
 Parcels

Coastal High Hazard Area

 SurgeZoneCat1

INDIAN RIVER LAGOON SEPTIC OVERLAY MAP

Comprehensive Plan Amendment 2019-2.2
Brevard Medical City 19PZ00086



1:4,800 or 1 inch = 400 feet

This map was compiled from recorded documents and does not reflect an actual survey. The Brevard County Board of County Commissioners does not assume responsibility for errors or omissions hereon.

Produced by BoCC - GIS Date: 8/3/2020

 Subject Property

 Parcels

Septic Overlay

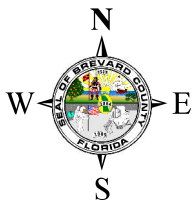
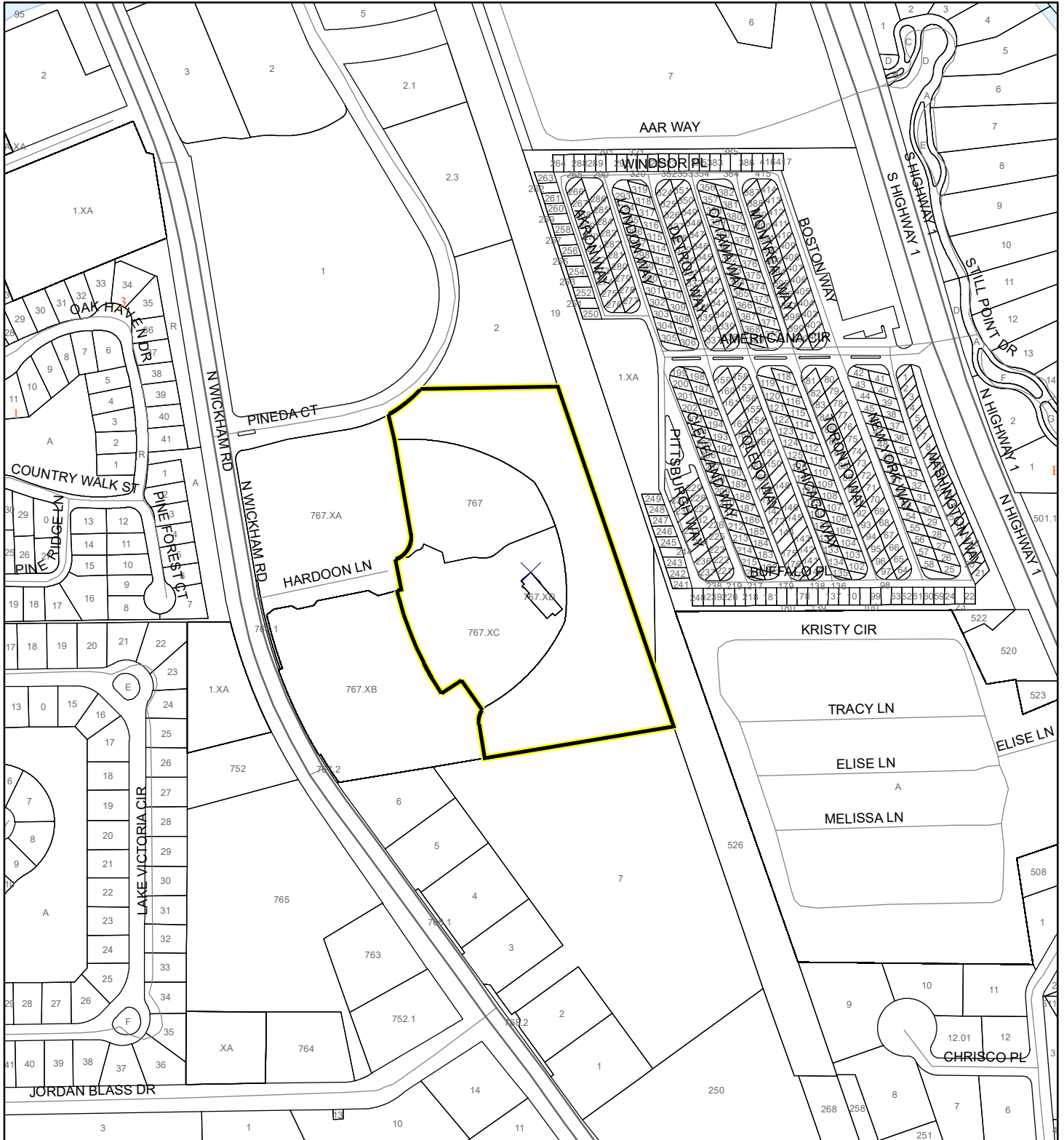
 40 Meters

 60 Meters

 All Distances

EAGLE NESTS MAP

Comprehensive Plan Amendment 2019-2.2
Brevard Medical City 19PZ00086




1:4,800 or 1 inch = 400 feet

This map was compiled from recorded documents and does not reflect an actual survey. The Brevard County Board of County Commissioners does not assume responsibility for errors or omissions hereon.

Produced by BoCC - GIS Date: 8/3/2020

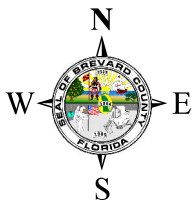
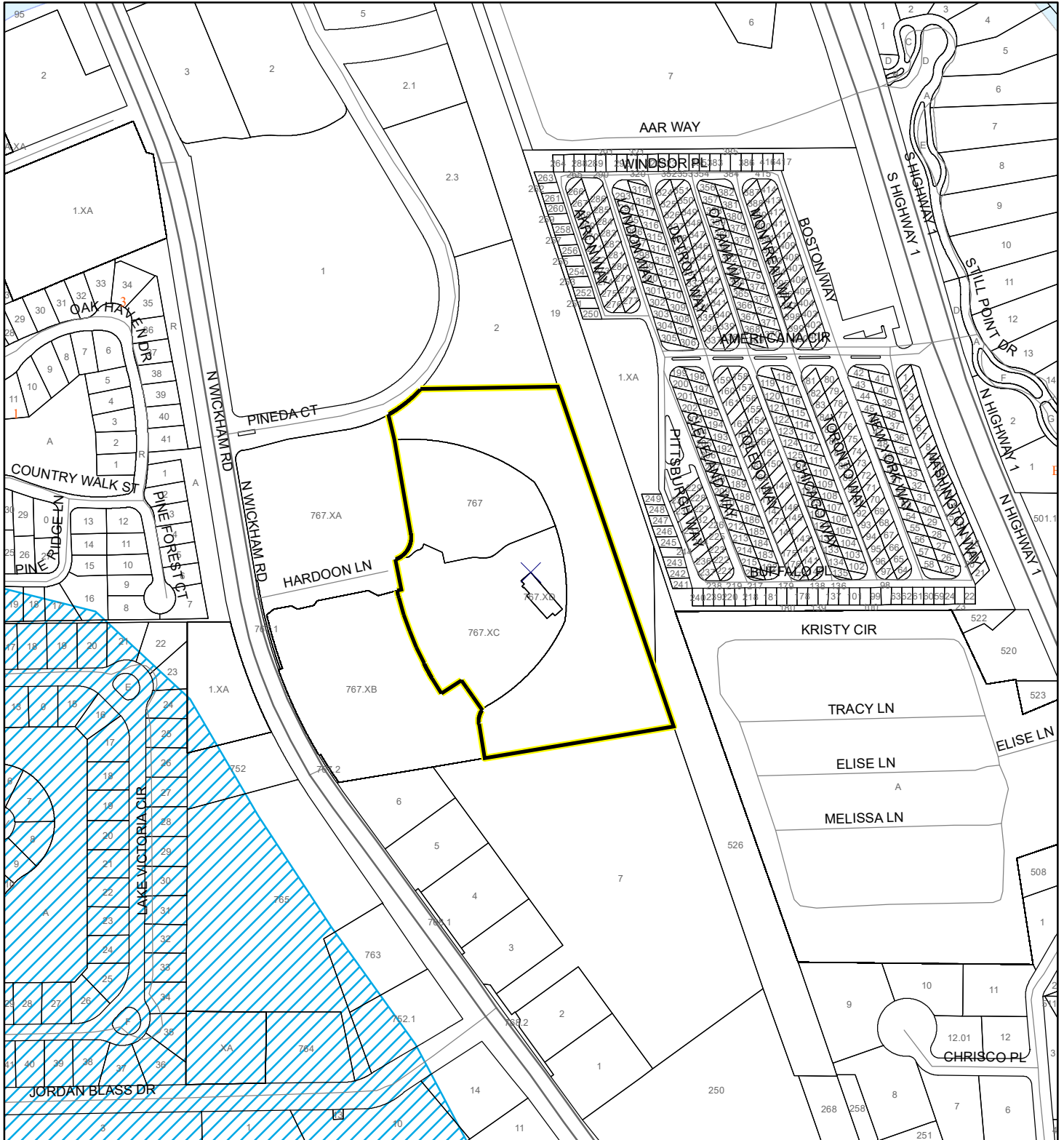
 Subject Property

 Parcels

 Eagle Nests
FWS 2010

SCRUB JAY OCCUPANCY MAP




Comprehensive Plan Amendment 2019-2.2
Brevard Medical City 19PZ00086



1:4,800 or 1 inch = 400 feet

This map was compiled from recorded documents and does not reflect an actual survey. The Brevard County Board of County Commissioners does not assume responsibility for errors or omissions hereon.

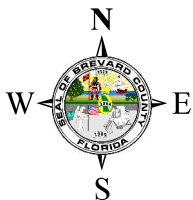
Produced by BoCC - GIS Date: 8/3/2020

-  Subject Property
-  Parcels
-  Scrub Jay Occupancy

SJRWMD FLUCCS UPLAND FORESTS - 4000 Series MAP

Comprehensive Plan Amendment 2019-2.2

Brevard Medical City 19PZ00086



1:4,800 or 1 inch = 400 feet

This map was compiled from recorded documents and does not reflect an actual survey. The Brevard County Board of County Commissioners does not assume responsibility for errors or omissions hereon.

Produced by BoCC - GIS Date: 8/3/2020

SJRWMD FLUCCS Upland Forests

- Upland Coniferous Forest - 4100 Series
- Upland Hardwood Forest - 4200 Series
- Upland Mixed Forest - 4300 Series
- Tree Plantations - 4400 Series

Subject Property

Parcels