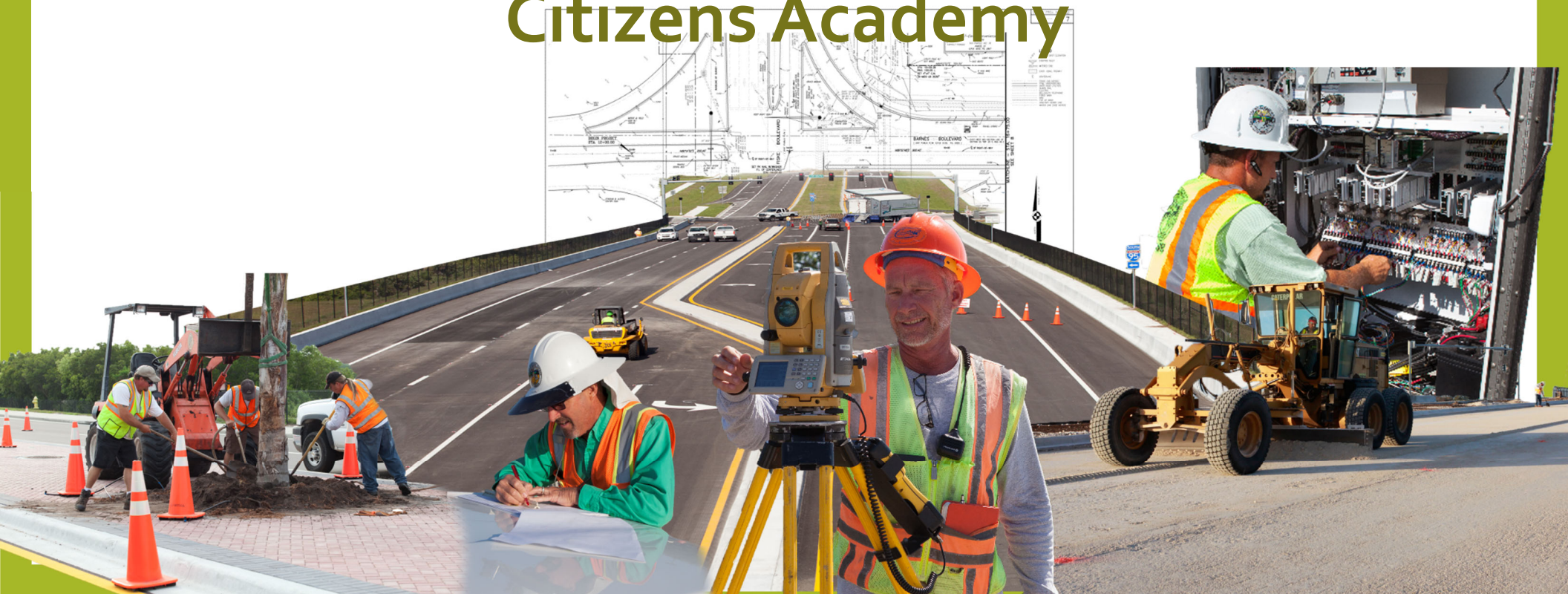




Public Works Department Citizens Academy



Brevard County Public Works Overview

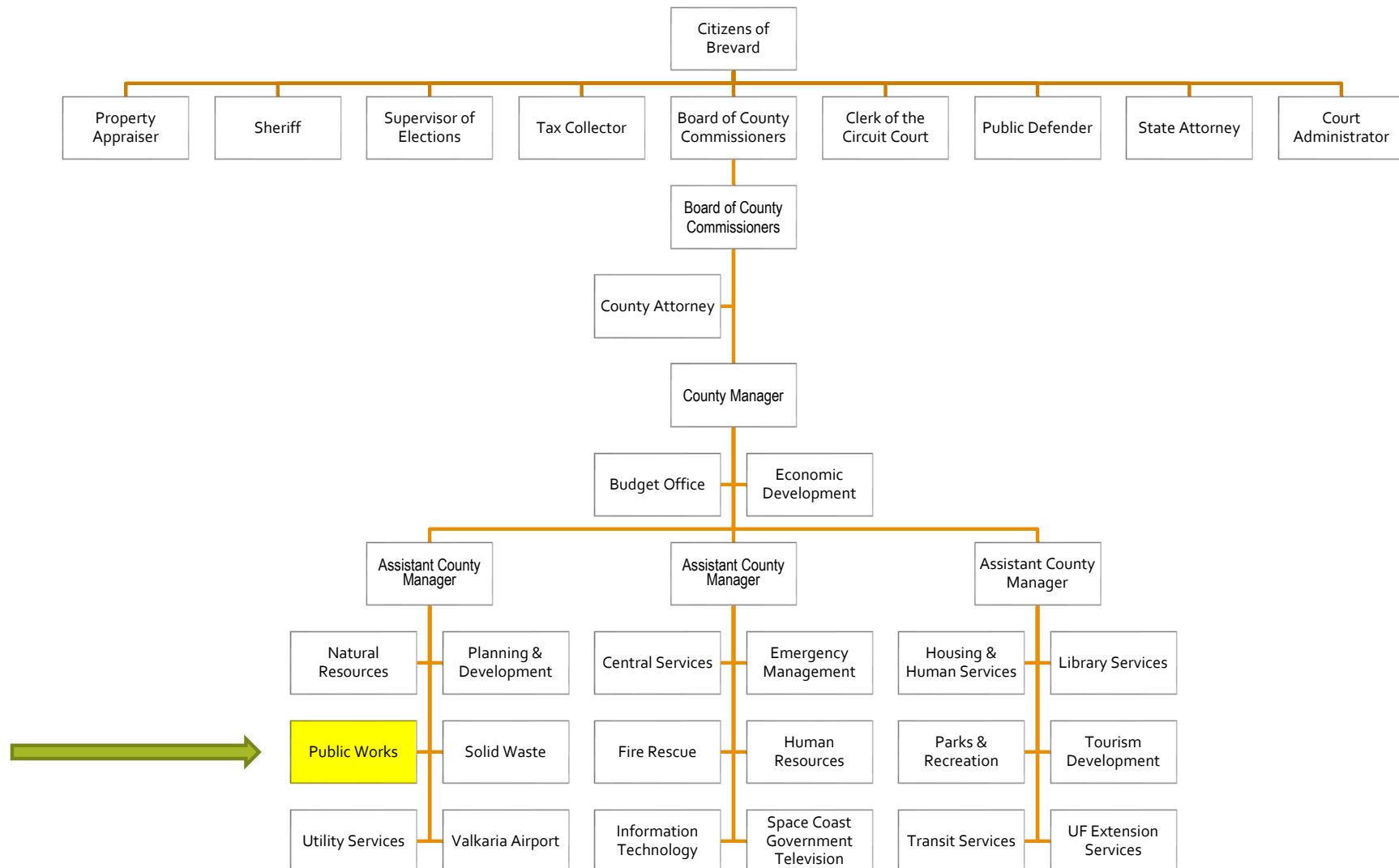
Our Mission is to plan and implement projects and services that create and maintain a comprehensive transportation and facilities infrastructure

Fast Facts

1,239 Miles of Roads	\$184.2M* 2026 Adopted Budget
65K+ Traffic Signals/Signs	\$3.6B Unfunded Backlog
4.2M Building Square Footage	6 Programs (Engineering, Facilities, Road & Bridge Support Services, Survey, Traffic)
954 Miles of Drainage Systems	
~700 Projects in Progress	
682K Citizens We Serve (35%)	
1,557 Total Square Miles Maintained (68%)	
336 Funded Positions	17% Vacancy Rate
278 On Board	
58 Vacancies	

*~1/2 Balance Forward

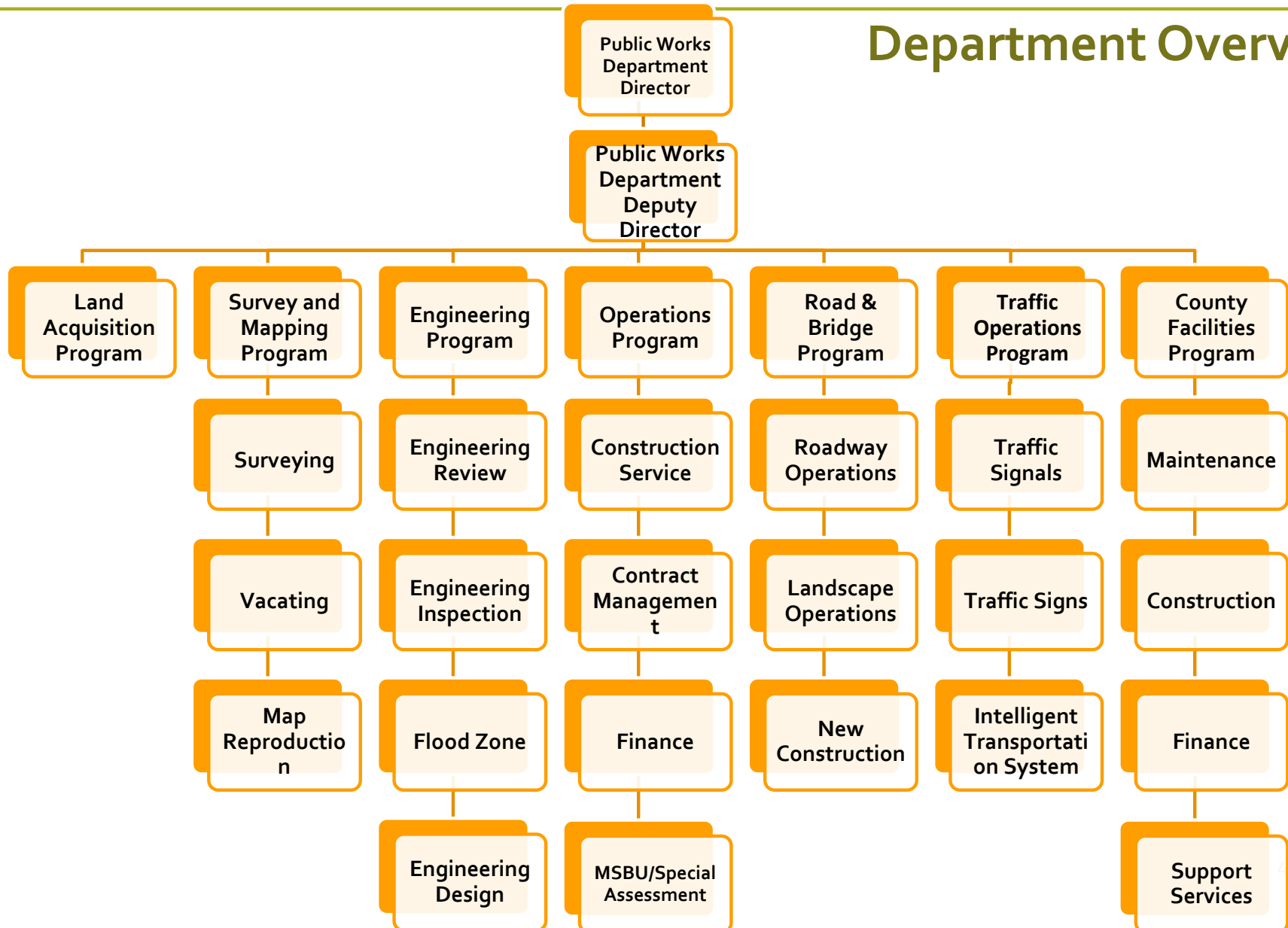
Brevard County Organizational Overview





Public Works Citizens Academy

Department Overview



Land Acquisition Program

- Right of Ways
 - Maintain Records
 - Development Review
 - Research Support
 - Public
 - Departments/Agencies
- Land Acquisition
 - Capital Improvement Projects
 - Many Departments



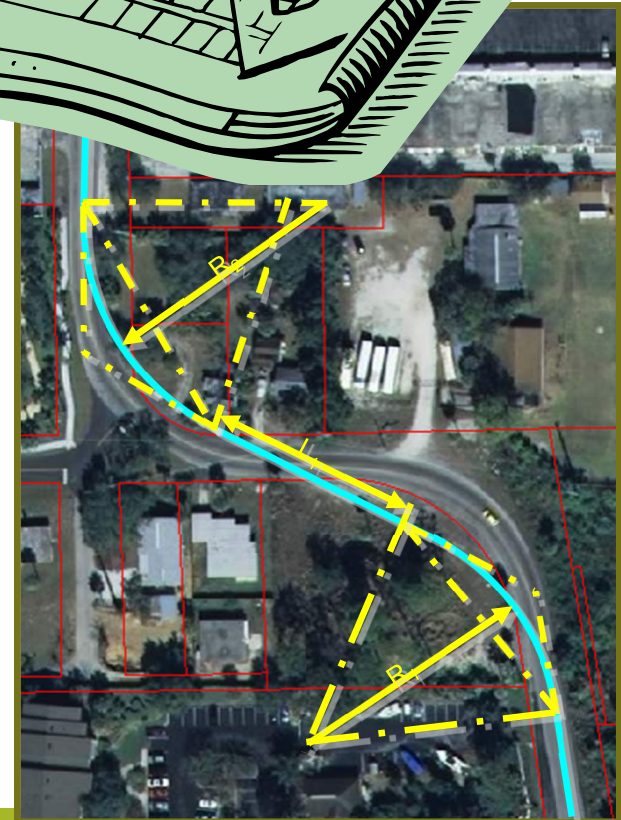
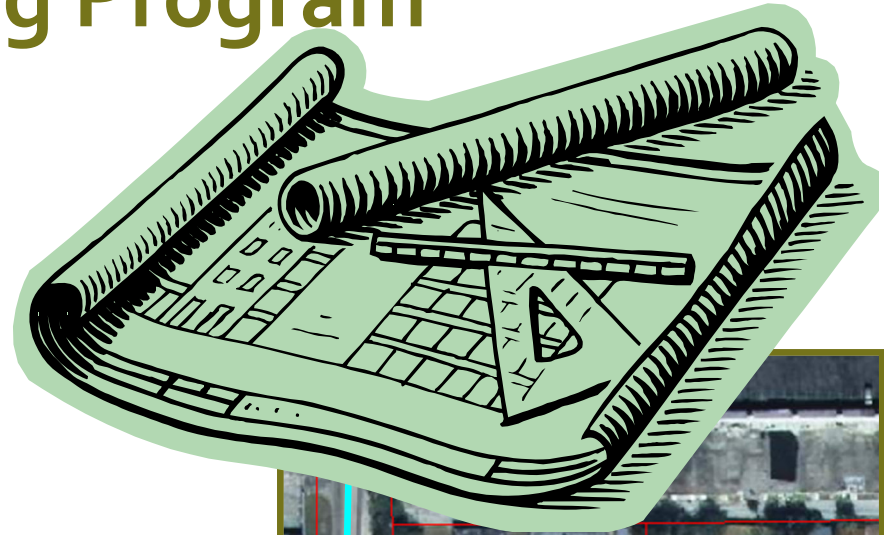
Surveying and Mapping Program

- Maintain Historical Survey Records
- Reviews new Development and Subdivision projects
- Survey Services
 - Boundary Surveys of County lands
 - Design Surveys for Infrastructure Improvements
- Provides Survey-grade GIS services
- Maintain County Benchmarks



Engineering Program

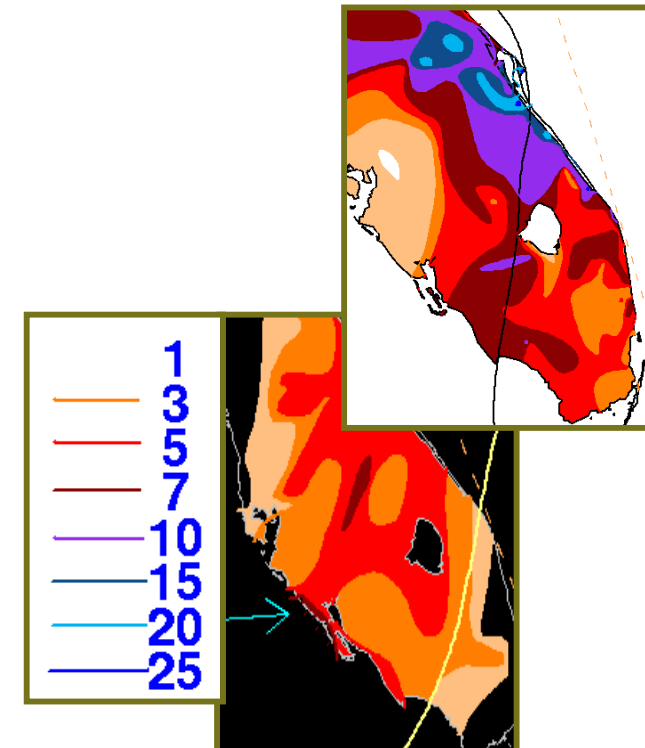
- Engineering Section
 - Design & Drafting
 - Floodplain Management
 - Right-of-Way Permitting
 - Construction Inspection
 - Construction Management
 - Development Plan Review
- Flood Plain Management



Engineering - FEMA Design Flood

- 1% chance every year
 - Formerly called the "100 Year Storm"
 - 11.2 Inches of Rain in 24 Hours
- Our code:

Current County Code Sec. 62-3756, Exh A, Article 4.1 Design Storm		
Street Pipe Systems	10yr/24hr	7.9"
Roadside Swales	10yr/24hr	7.9"
Canals, Outfall Ditches, & Ponds	25yr/24hr	9.0"
Ponds (w/ no Legal Positive Outfall)	25yr/96hr	12.5"



- 6 Events exceeded the 1% storm since 2005
- Costly to change

Storm Requirements	Increased Storm Requirements *	Cost Increase ** (New Construction)
10yr/24hr	25yr/24hr	2x
	100yr/24hr	3x
	500yr/24hr	5x



TS Fay Video Next

TS Fay Video



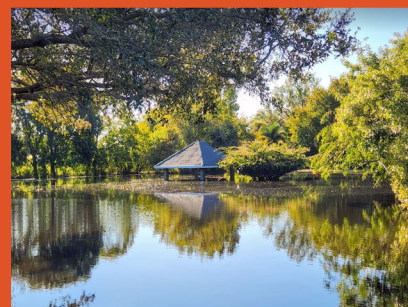


Public Works Citizens Academy

Hurricane Ian - 2022 (Titusville, Mims, Scottsmeer)

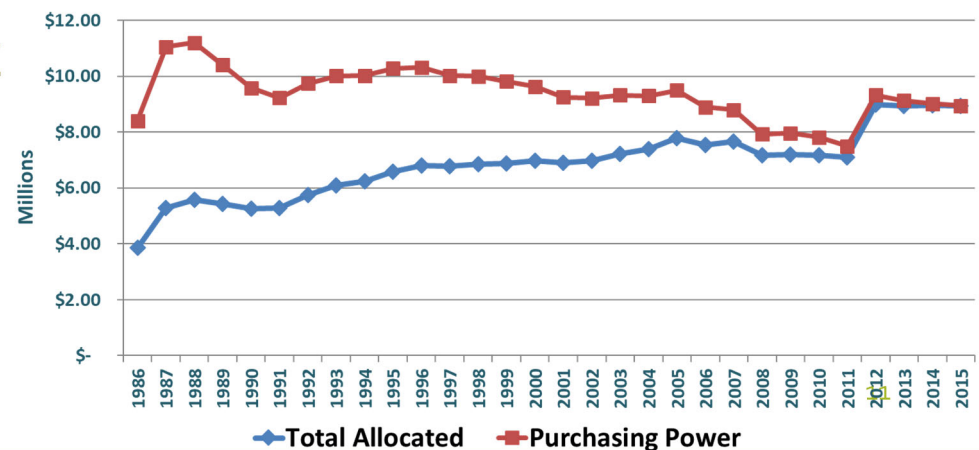


Unnamed Storm - 2025 (Titusville)



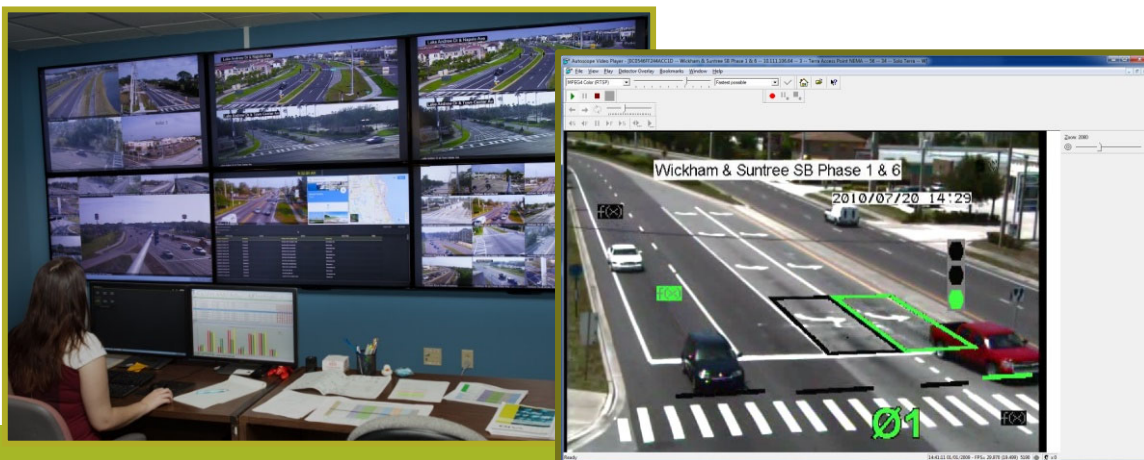
PW Operations /Support Services Program

- Contracts Administration
- Financial Management
- Hiring Process
- Records Compliance
- MSBU/Special Assessment



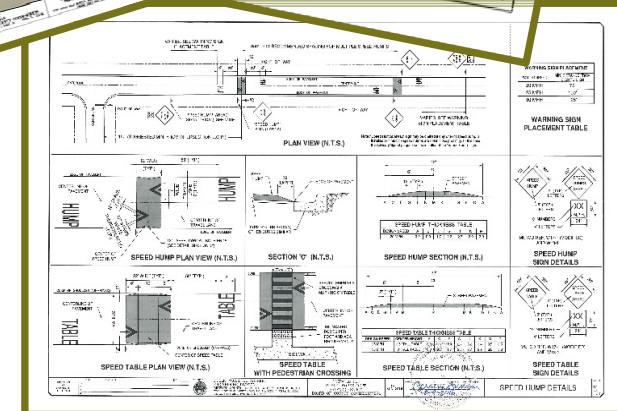
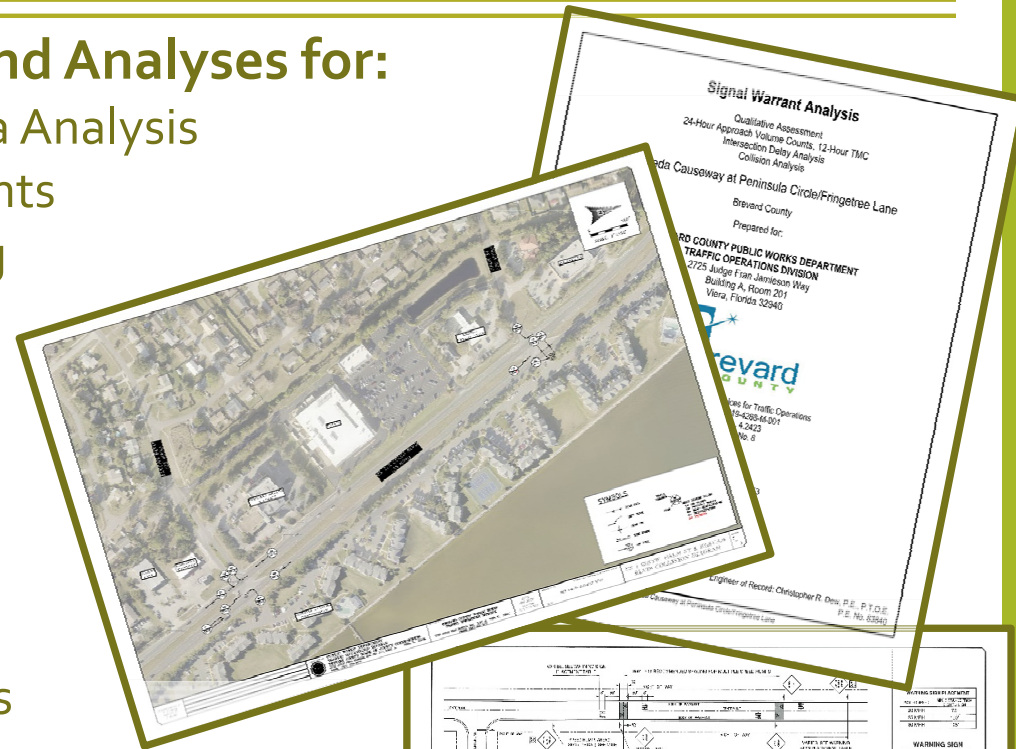
Traffic Operations Program

- Maintains Traffic Signals
- Manufactures and Maintains Signs
- Installs and Maintains Pavement Markings
- Intelligent Transportation Systems
- Reviews Site/Subdivision, Right of Way, and other plans/studies for conformance.



- **Conduct Traffic Studies and Analyses for:**

- Crash/Accident Data Analysis
- Traffic Signal Warrants
- Traffic Signal Timing
- Traffic Counts
- Stop Sign Warrants
- Speed Limits
- School Zones
- Speed Humps
- Pavement Markings
- Pedestrian Crossings
- Street Lighting
- Sign Manufacturing and Installations



- **Conduct Traffic Engineering Review:**

- Site/Subdivision Development
- Right-of-Way Use Permits
- Traffic Impact Studies
- Capital Improvement Projects
- FDOT's State Road Projects

2016 FDOT
Manual on
Uniform
Traffic
Studies

FDOT
**TRAFFIC
ENGINEERING
MANUAL**

November 2017

Manual on Uniform
Traffic Control Devices
for Streets and Highways

2009 Edition

Including Revisions 1 through May 2012
and Amendments 1 through May 2013

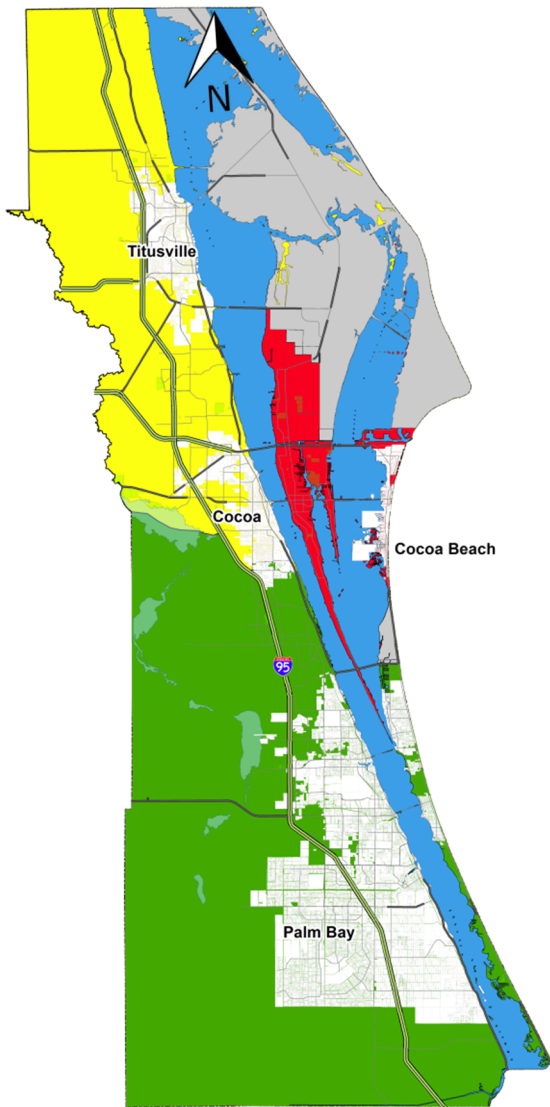


Road & Bridge Program

- Road Maintenance Program
- New Construction
- Drainage Construction
- Landscaping Program
- Bridge Operation and Maintenance
- Emergency Response



Road Maintenance

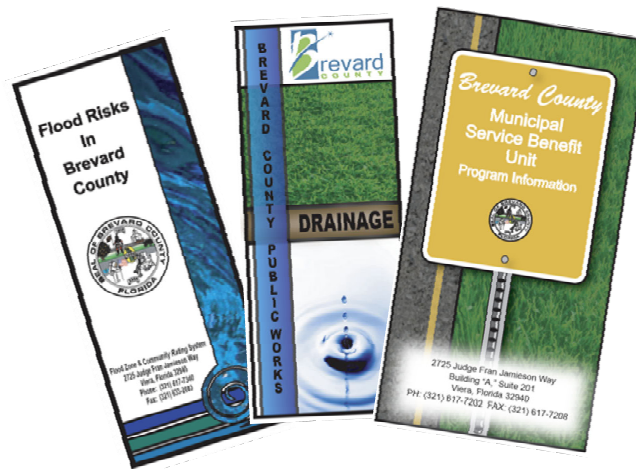


-  North Roadway Maintenance
-  Central Roadway Maintenance
-  South Roadway Maintenance

Brevard County is 72 miles long and 20 miles wide consisting of 1,575 square miles with a population of approx 682,000; therefore, the Maintenance Program is divided into 3 response areas, 5 locations.

Road & Bridge - Road Maintenance

Within your packet you will find a handout with contact information to Road & Bridge field offices and various Public Works programs.



Also included are several brochures outlining information regarding various other programs related to the department.

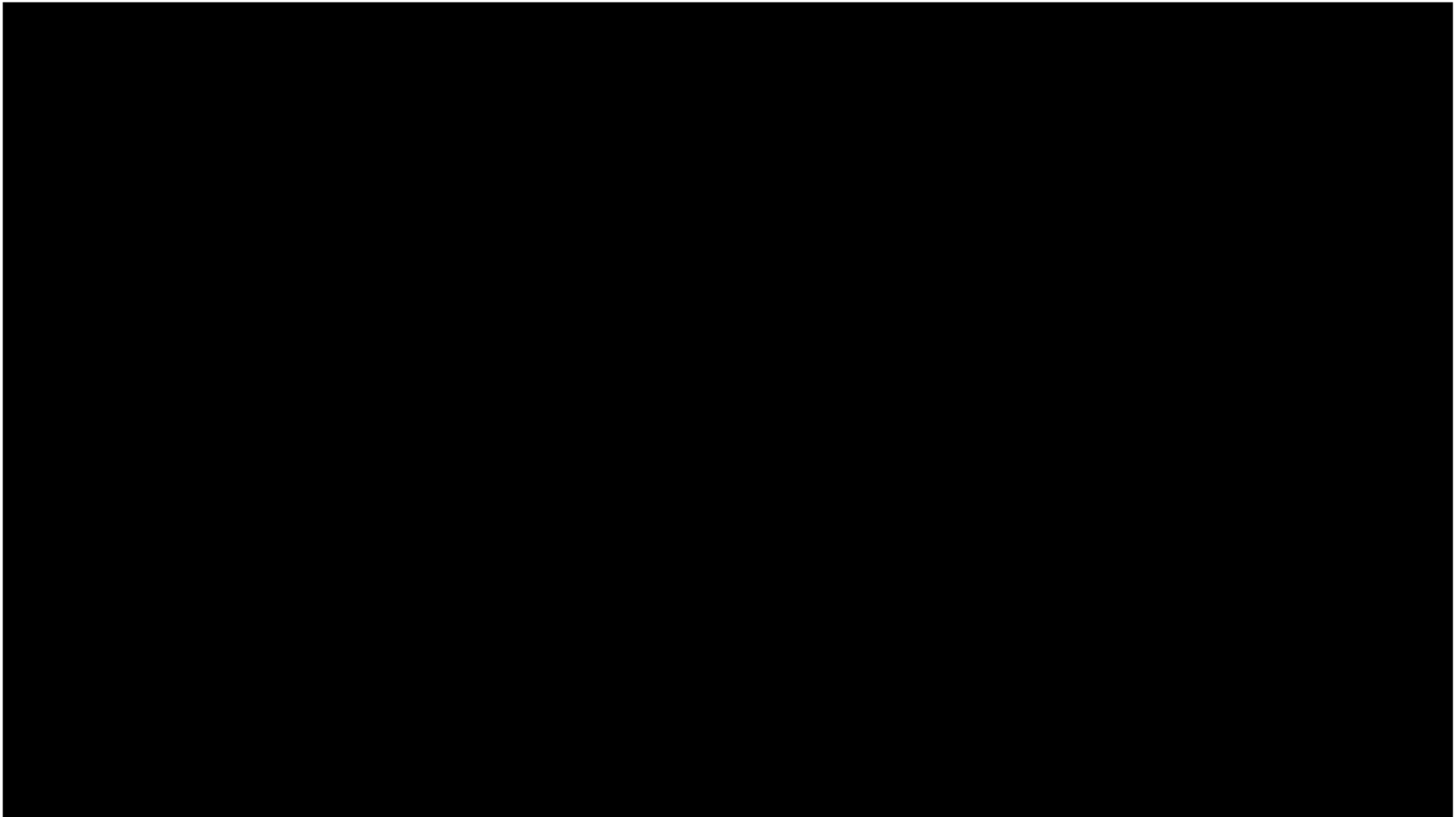
Road & Bridge Roadway Construction

- Roadway new construction
- Roadway reconstruction
- Road resurfacing
- Parking lots for County facilities
- Emergency Response

Public Works Roadway Construction Saves Brevard County approximately \$750k to \$1M per year.



Wickham Rd. Culvert Time-Lapse Video



Road & Bridge - Landscape Maintenance

- Installs Plants/Trees within the Road Right-of-Way
- Maintains Irrigation and Landscaping on Major Gateway Roads into Brevard County
- Oversees Landscaping Contractors on Major Roads (Highway 520 through Cocoa and Merritt Island, Pineda Causeway)



Road & Bridge - Bridge Operation and Maintenance

The Road & Bridge Division is responsible for one swing-bridge within the County. In addition, the Department performs maintenance on 44 fixed bridges and 4 pedestrian bridges.



Indian Harbour Beach, Mathers Bridge

Road & Bridge - Emergency Response

Road and Bridge employees are
“First Responders”

and are actively involved in providing a safe route for Police and Fire Rescue after hurricanes, tornadoes, fires, floods and other storm event emergencies.

Brevard County Facilities Program

- Building Maintenance & Operations
- Support Services Contracts
- Facilities Design & Construction
- Building Condition Assessment
- Energy Conservation Measures
- Natural Disaster Response Events
- Space Management
- Community Planning





Public Works Contacts

Brevard County Public Works

The Public Works Department is made up of the following programs:



Public Works Administration / Finance

Tammy Thomas-Wood, Public Works Support Service Manager

Administers the design and construction of transportation improvement projects funded through gas tax and locally collected impact fees. The Municipal Service Benefit Unit (MSBU) and Special Assessments area provides residents with a funding mechanism for specific infrastructure improvements including road resurfacing, water, and sanitary sewer line installation. The Customer Service area provides citizen support and referrals as well as, staff support for all programs within Public Works.



Road and Bridge Maintenance

Susan Jackson, Assistant Director, Road and Bridge Manager

<https://www.brevardfl.gov/PublicWorks>

M-F 8am to 5pm

emails: publicworksoffice@brevardfl.gov

facilities.request@brevardfl.gov

(321) 617-7202

After Hours Dispatch through EOC

(321) 637-6670



- Home
- Construction / Contract Management
- Easements / Right of Way
- Engineering
- Facilities
- Flood Zone Information
- Landscaping Operations
- Map Reproduction
- Municipal Service Benefit Unit Program
- Projects ↕
- Road and Bridge Construction
- Road and Bridge Maintenance
- Survey Section
- Traffic Operations ↕
- Service Request for Road and Bridge**
- Service Request for Traffic Operations**
- Vertical Control

Links of Interest

- [Benchmark Map](#)
- [Flood Zones Map](#)



Questions

Public Works Department

Speed Hump Program

Policies and Procedures

- Policy BCC-91
- Administrative Order AO-72

Controversial:

- Noise
- Potential Vehicle Damage
- Driver Discomfort
- Emergency Response

Staff Conducts Speed Hump Study and Engineering Design

District Commissioner Approves or Denies request

- MSTU Funds

BREVARD County
BOARD OF COUNTY COMMISSIONERS

POLICY

Title: Speed Hump Installation or Removal

Number: BCC-91
Cancel: 50504
Approved: 11/17/09
Originator: Public Works Department Engineering Division
Review: 11/17/2011

I. OBJECTIVE
To establish the criteria under which speed hump installation will be permitted on County roadways.

II. DEFINITIONS AND REFERENCES
Affected Area: Includes those residents adjacent to the roadway where speed humps are proposed, which would result in speed reduction.
Benefited Area: Includes those residents adjacent to the roadway where speed humps are proposed, which would result in speed reduction.
Speed Hump: A speed control device, typically twelve (12) feet long and three (3) to four (4) inches high and the width of the roadway, and parallel to design.
M.U.T.C.D.: Manual on Uniform Traffic Control Devices published by the Federal Highway Administration.
Speed Hump Ranking Criteria: A set of standards used to evaluate and consider possible speed hump installation by the Commissioner of the district in which the request is being made.

III. DIRECTIVES
A. The Engineering Division shall develop a procedure for processing requests, from constituents, for installation of and/or removal of speed humps.

- Speed humps shall only be considered for installation on tangent sections of residential roads with average traffic volumes less than 1,000 per day.
- Speed humps shall not be closer than 100 ft. to a street intersection.
- All speed hump installations shall be signed and marked in conformance with the M.U.T.C.D.
- The Engineering Division shall determine and establish the Benefited Area and the Affected Area by the proposed speed humps. The procedure shall provide for a survey of the Benefited Area and may consider a survey of the entire Affected Area as part of the determination to install or not install proposed speed humps or remove existing speed humps.

BREVARD County
BOARD OF COUNTY COMMISSIONERS

ADMINISTRATIVE ORDER

Title: Speed Hump Installation and Removal

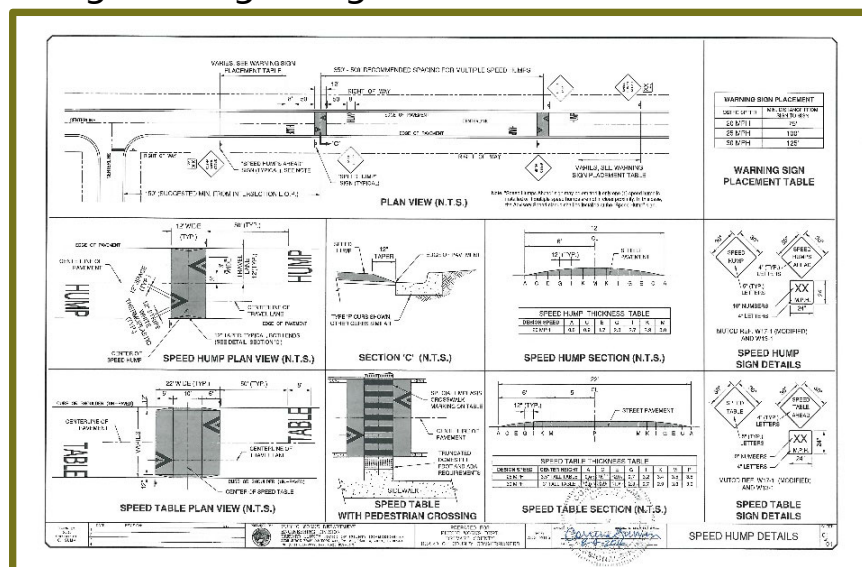
Number: AO-72
Cancel: 10200
Approved: 11/23/09
Originator: Public Works Department Engineering Division
Review: 11/23/2011

I. PURPOSE AND SCOPE
To implement Board Policy BCC-91, Speed Hump Installation and Removal, and to provide guidelines under which speed hump installations will be permitted on County roadways.

II. DEFINITIONS AND REFERENCES
A. Definitions
Affected Area: Includes the benefited area and those residents who must traverse the speed humps to access their residences. Also, includes those residents who are adjacent to roads which do not have existing speed humps and which would be used as a bypass route by traffic avoiding the proposed speed humps.
Benefited Area: Includes those residents adjacent to the roadway where speed humps are proposed, which would result in speed reduction.
Speed Hump: A speed control device, typically twelve (12) feet long and three (3) to four (4) inches high and the width of the roadway.
M.U.T.C.D.: Manual on Uniform Traffic Control Devices published by the Federal Highway Administration.
Speed Hump Ranking Formula: A set of standards used to determine the feasibility of speed hump installation.

III. PROCEDURE
A. Upon a verbal or written request for speed humps, a speed hump package will be sent to the requestor with the following information:
A map indicating the benefited area and/or the affected area, as determined by staff, and proposed speed hump locations, position, notification of the potential detrimental effects of speed humps, and acknowledgment of concurrence or disagreement from the following agencies:

Engineering Design Detail:



Public Works Department

Street Lighting

Procedure for the request, justification, authorization and installation of street lighting.

A limited number of streetlights are installed by Brevard County each year.

Justification for Installation of Street Lighting, Criteria:

- Roadway Geometry
- Crash Experience
- Intersections, Dead-Ends
- Significant Traffic Safety Issue

Authorized by the Traffic Operations Manager

