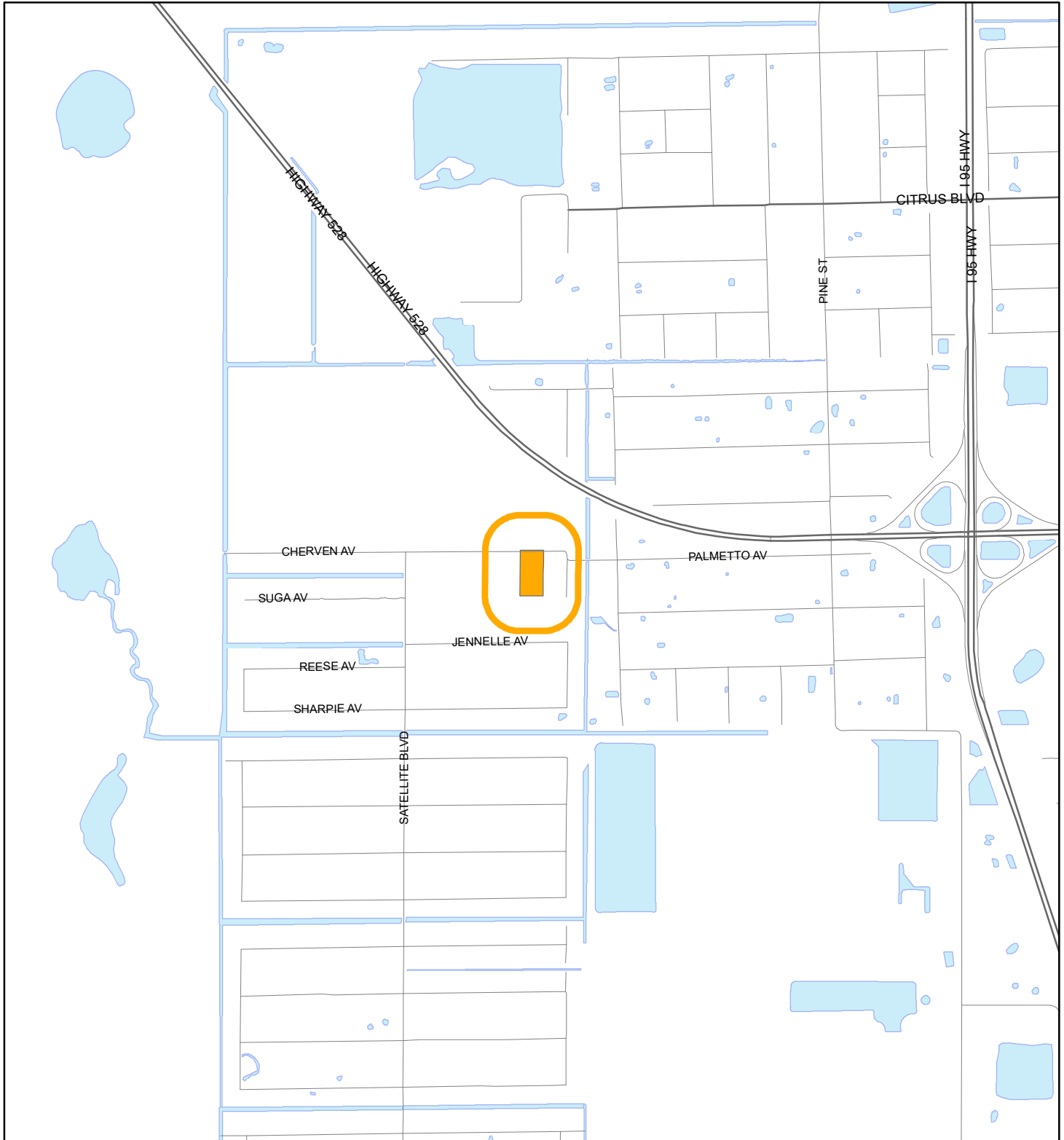


LOCATION MAP

Schoolfield, Jonathan & Emily
24Z00001





1:24,000 or 1 inch = 2,000 feet

Buffer Distance: 500 feet

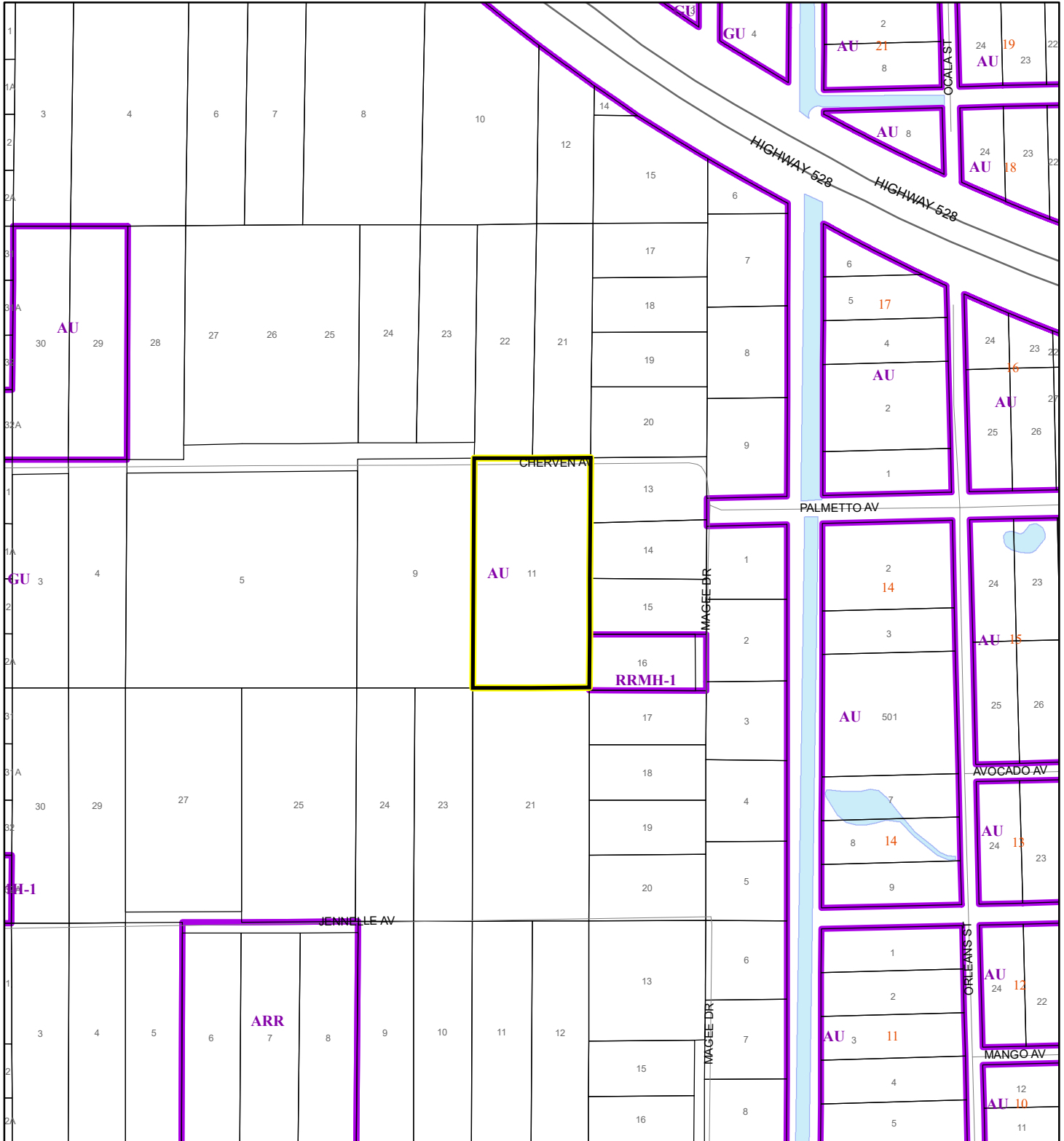
This map was compiled from recorded documents and does not reflect an actual survey. The Brevard County Board of County Commissioners does not assume responsibility for errors or omissions hereon.

Produced by BoCC - GIS Date: 2/8/2024

 Buffer
 Subject Property

ZONING MAP


Schoolfield, Jonathan & Emily
24Z00001



1:4,800 or 1 inch = 400 feet

This map was compiled from recorded documents and does not reflect an actual survey. The Brevard County Board of County Commissioners does not assume responsibility for errors or omissions hereon.

Produced by BoCC - GIS Date: 2/8/2024

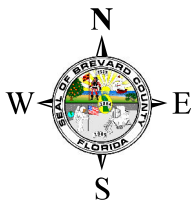
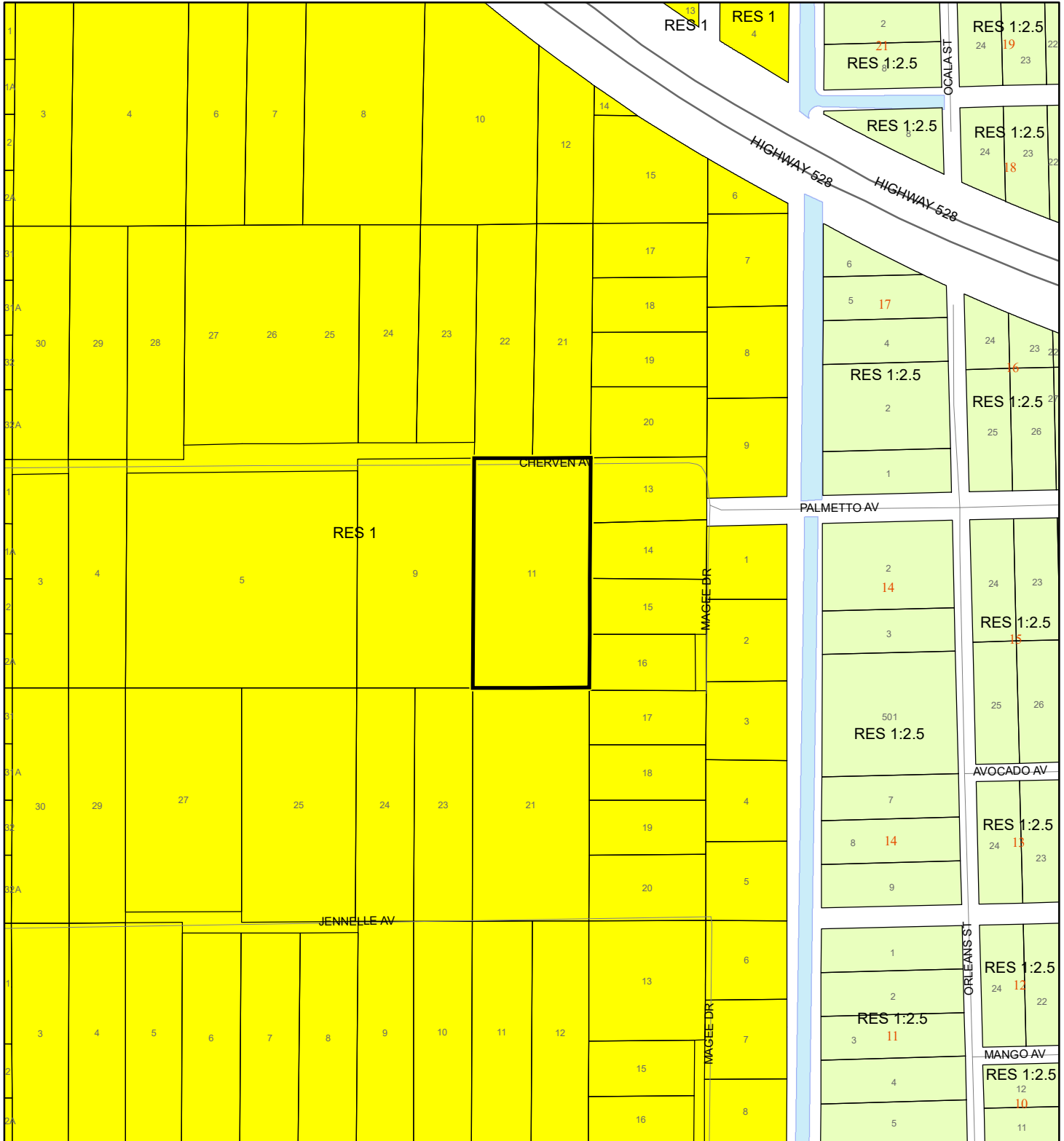
 Subject Property

 Parcels

 Zoning

FUTURE LAND USE MAP

Schoolfield, Jonathan & Emily
24Z00001



1:4,800 or 1 inch = 400 feet

This map was compiled from recorded documents and does not reflect an actual survey. The Brevard County Board of County Commissioners does not assume responsibility for errors or omissions hereon.

Produced by BoCC - GIS Date: 2/8/2024

Subject Property
Parcels

AERIAL MAP

Schoolfield, Jonathan & Emily

24Z00001




1:2,400 or 1 inch = 200 feet

PHOTO YEAR: 2023

This map was compiled from recorded documents and does not reflect an actual survey. The Brevard County Board of County Commissioners does not assume responsibility for errors or omissions hereon.

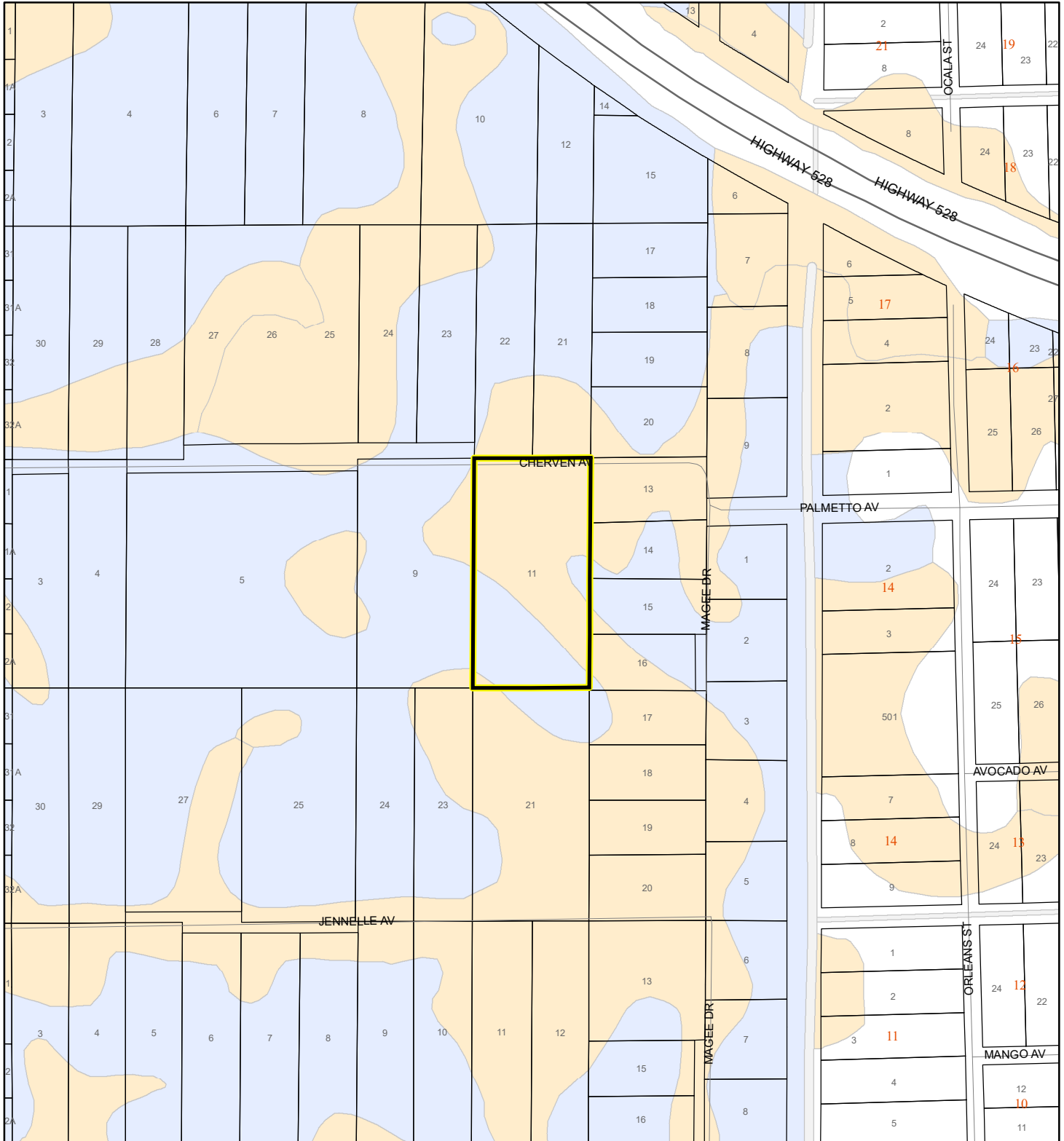
Produced by BoCC - GIS Date: 2/8/2024

 Subject Property

 Parcels

NWI WETLANDS MAP

Schoolfield, Jonathan & Emily
24Z00001



1:4,800 or 1 inch = 400 feet

This map was compiled from recorded documents and does not reflect an actual survey. The Brevard County Board of County Commissioners does not assume responsibility for errors or omissions hereon.

Produced by BoCC - GIS Date: 2/8/2024

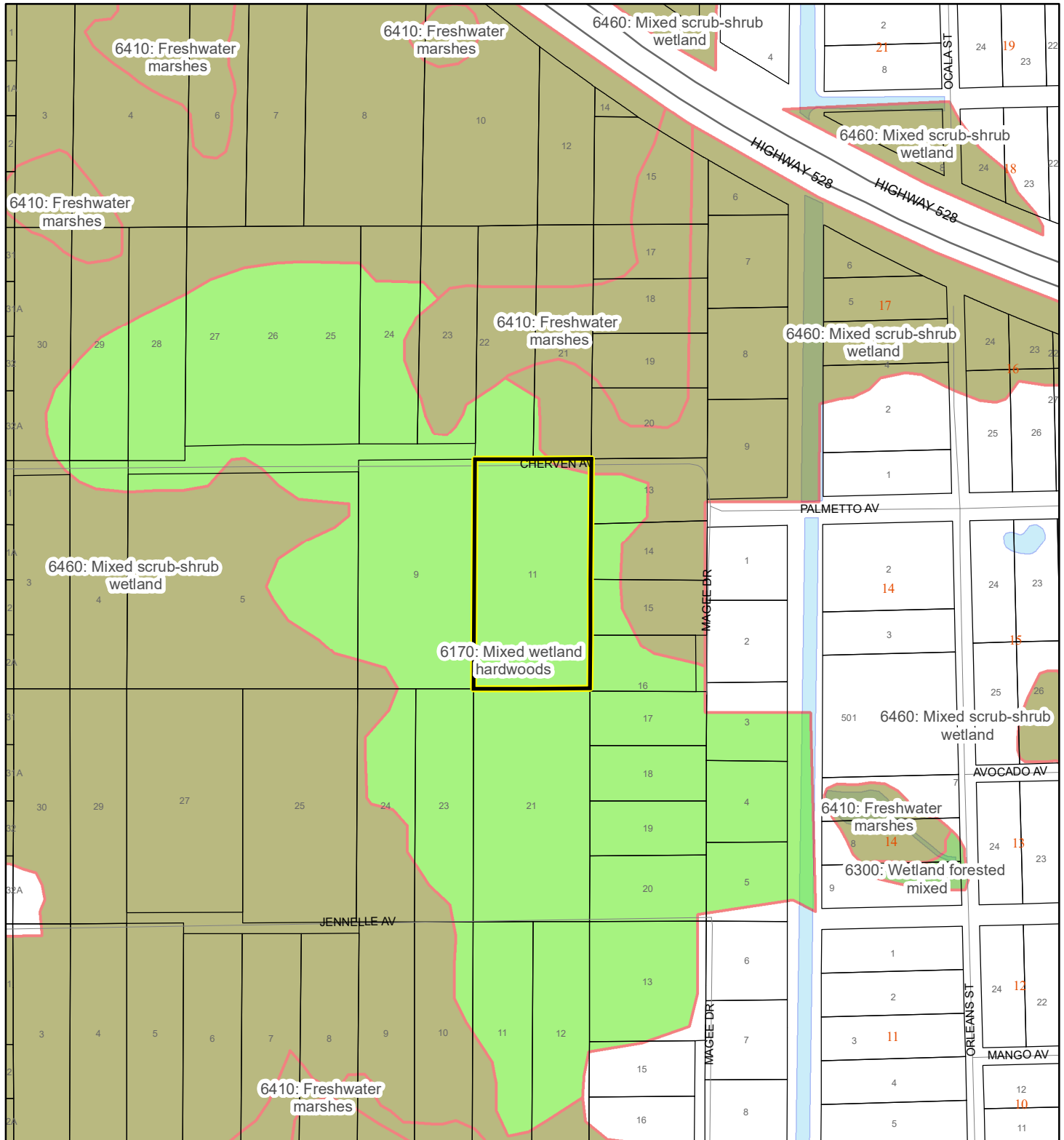
National Wetlands Inventory (NWI)

Estuarine and Marine Deepwater	Freshwater Pond
Estuarine and Marine Wetland	Lake
Freshwater Emergent Wetland	Other
Freshwater Forested/Shrub Wetland	Riverine
Subject Property	
Parcels	

SJRWMD FLUCCS WETLANDS - 6000 Series MAP

Schoolfield, Jonathan & Emily

24Z00001



1:4,800 or 1 inch = 400 feet

This map was compiled from recorded documents and does not reflect an actual survey. The Brevard County Board of County Commissioners does not assume responsibility for errors or omissions hereon.

Produced by BoCC - GIS Date: 2/8/2024

SJRWMD FLUCCS WETLANDS

- Wetland Hardwood Forests - Series 6100
- Wetland Coniferous Forest - Series 6200
- Wetland Forested Mixed - Series 6300
- Vegetated Non-Forested Wetlands - Series 6400
- Non-Vegetated Wetland - Series 6500

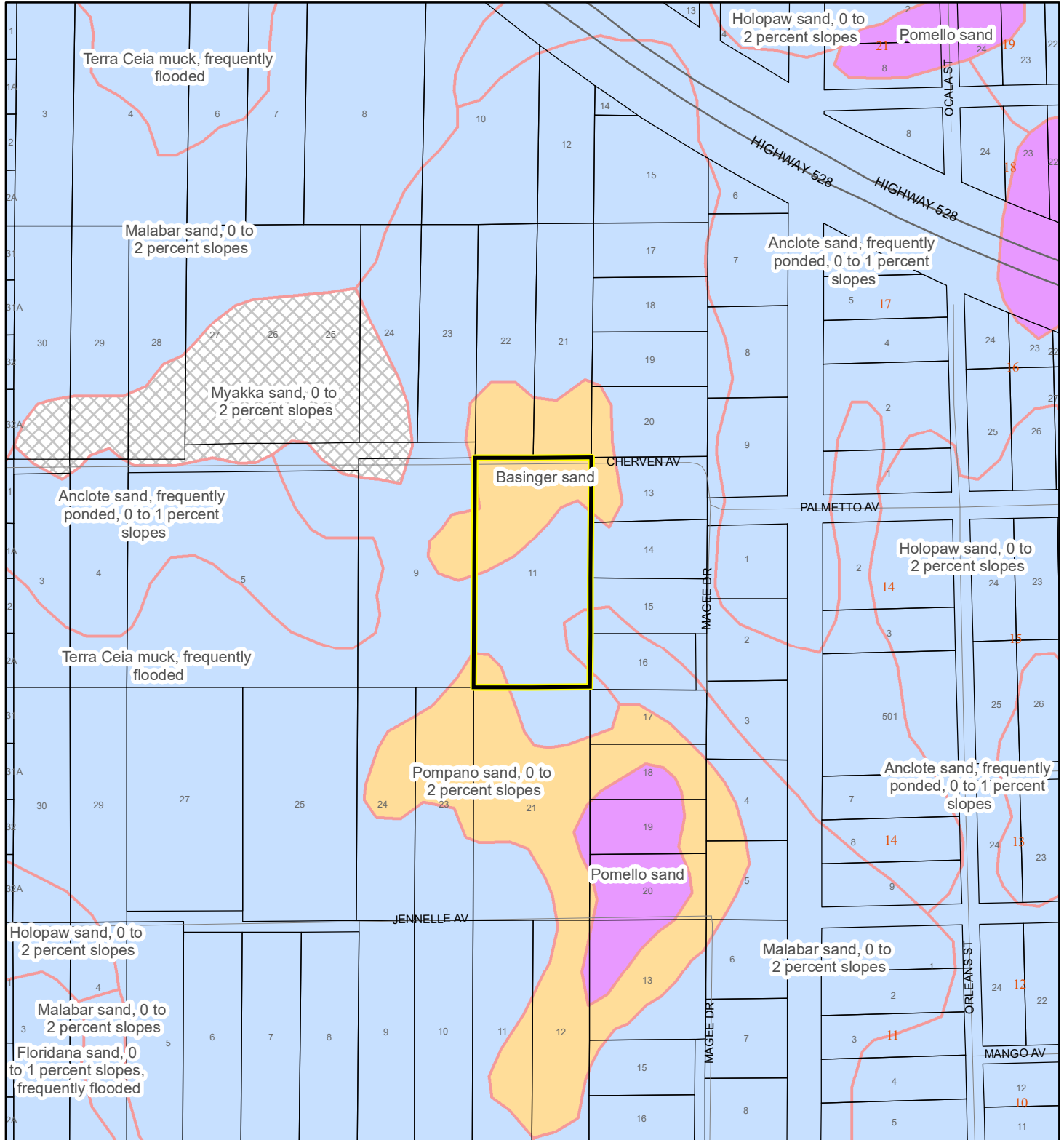
Subject Property

Parcels

USDA SCSSS SOILS MAP

Schoolfield, Jonathan & Emily

24Z00001



1:4,800 or 1 inch = 400 feet

This map was compiled from recorded documents and does not reflect an actual survey. The Brevard County Board of County Commissioners does not assume responsibility for errors or omissions hereon.

Produced by BoCC - GIS Date: 2/8/2024

USDA SCSSS Soils

- Aquifer and Hydric
- Aquifer
- Hydric
- None

Subject Property

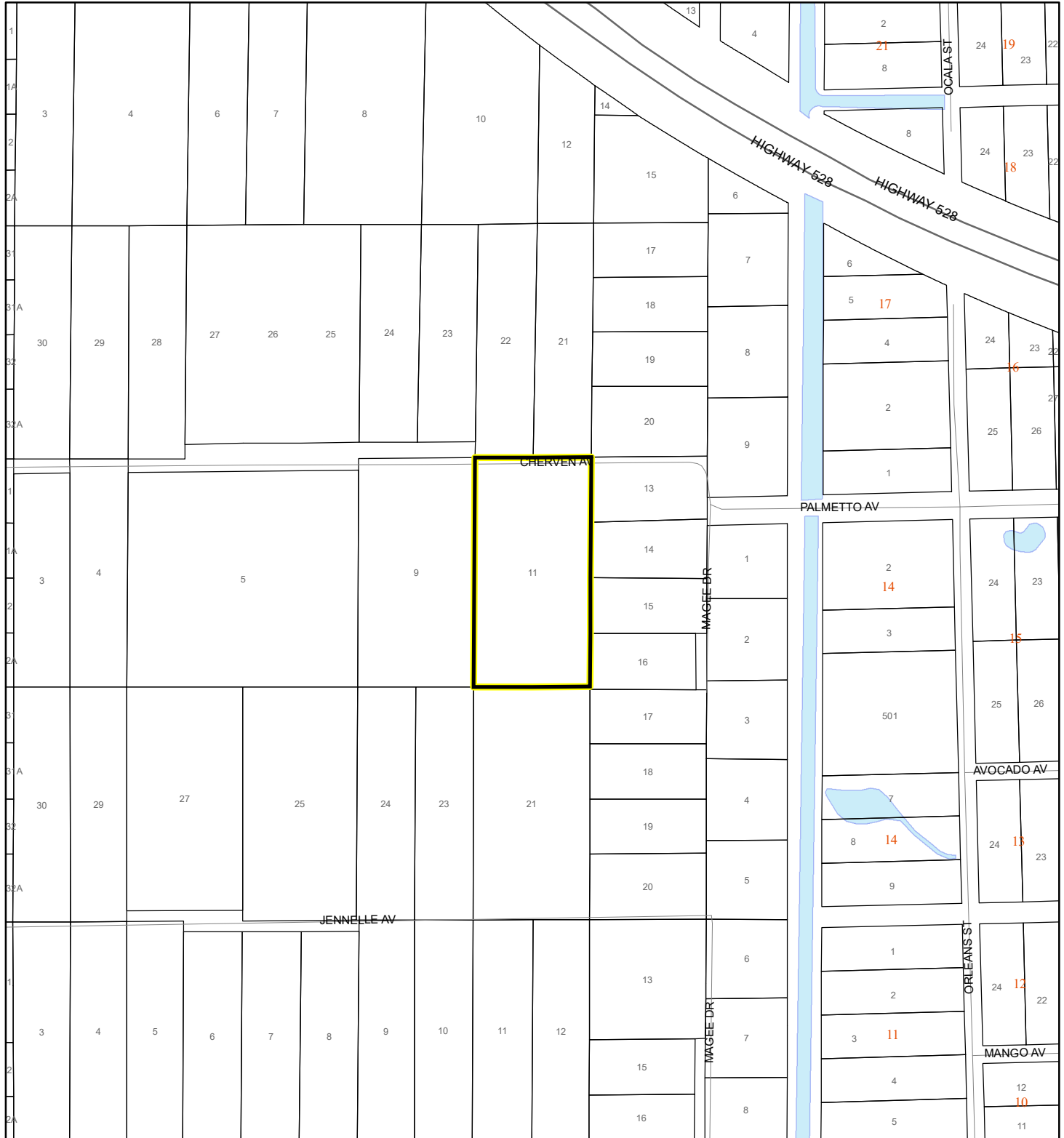
Parcels



COASTAL HIGH HAZARD AREA MAP

Schoolfield, Jonathan & Emily

24Z00001



1:4,800 or 1 inch = 400 feet


This map was compiled from recorded documents and does not reflect an actual survey. The Brevard County Board of County Commissioners does not assume responsibility for errors or omissions hereon.

Produced by BoCC - GIS Date: 2/8/2024

 Subject Property

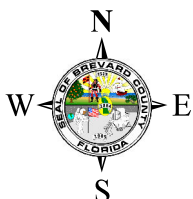
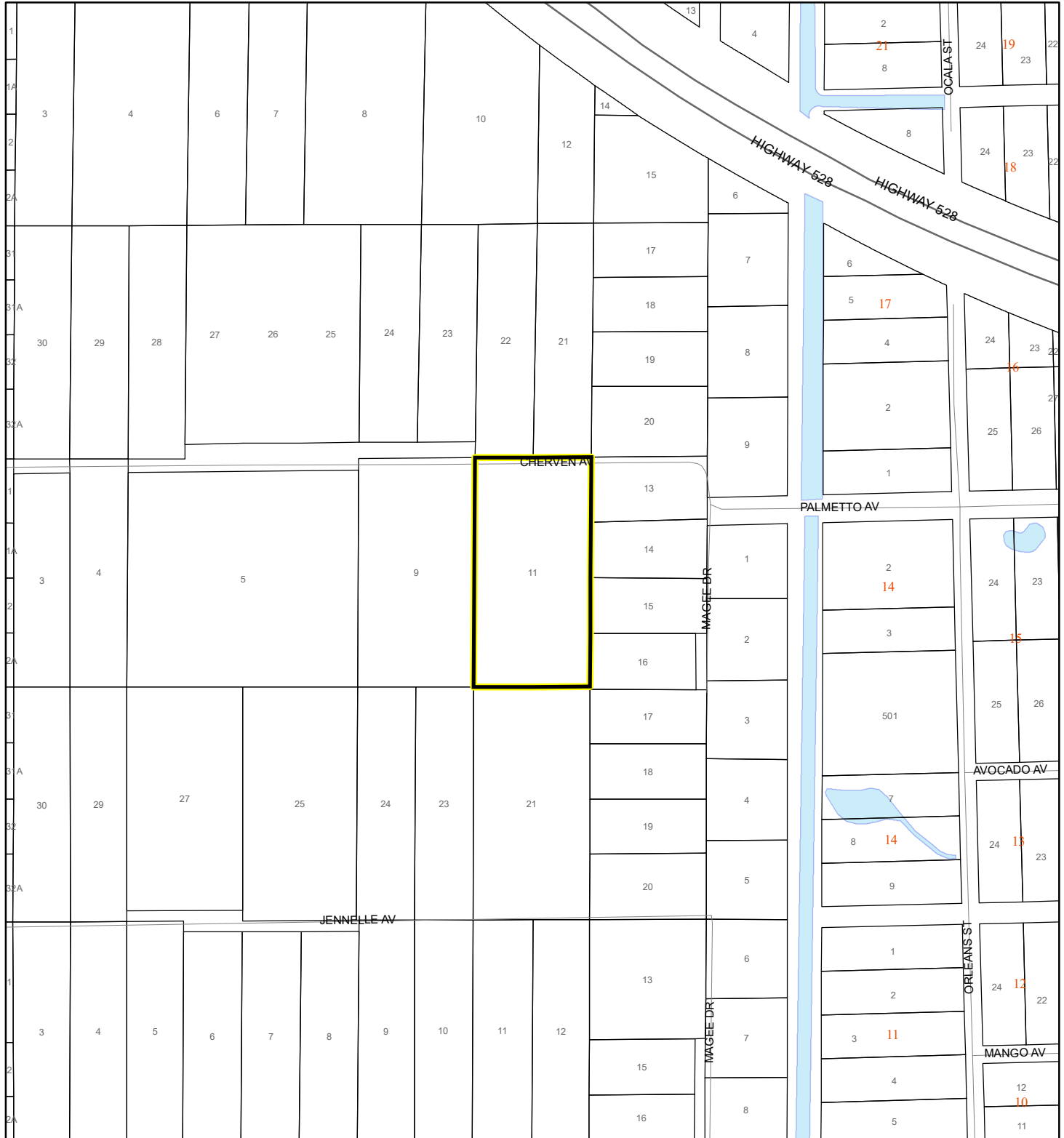
 Parcels

Coastal High Hazard Area

 SurgeZoneCat1

INDIAN RIVER LAGOON SEPTIC OVERLAY MAP

Schoolfield, Jonathan & Emily
24Z00001



1:4,800 or 1 inch = 400 feet

This map was compiled from recorded documents and does not reflect an actual survey. The Brevard County Board of County Commissioners does not assume responsibility for errors or omissions hereon.

Produced by BoCC - GIS Date: 2/8/2024

 Subject Property

 Parcels

Septic Overlay

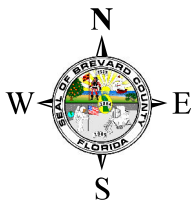
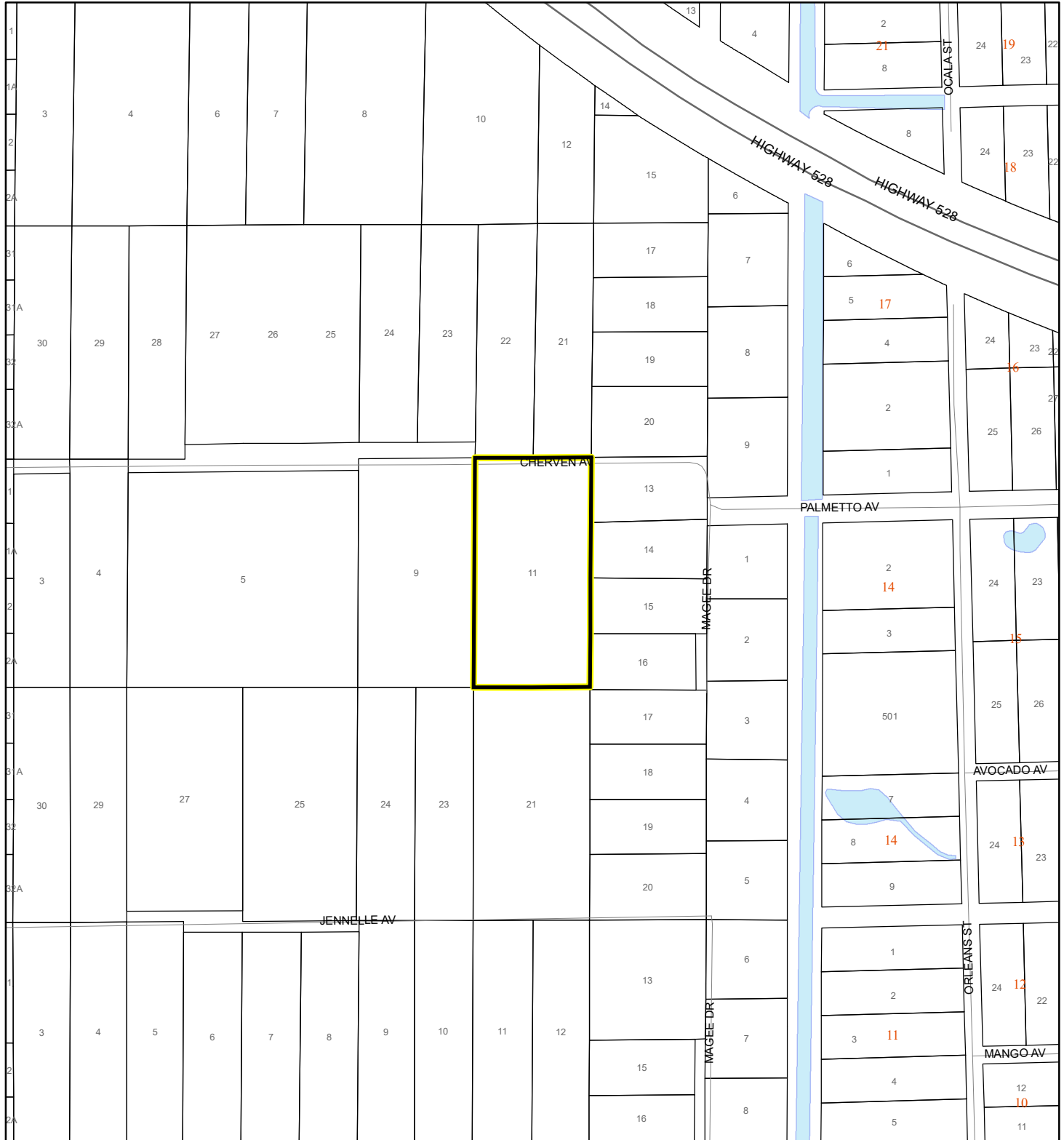
 40 Meters

 60 Meters

 All Distances

EAGLE NESTS MAP

Schoolfield, Jonathan & Emily
24Z00001



1:4,800 or 1 inch = 400 feet

This map was compiled from recorded documents and does not reflect an actual survey. The Brevard County Board of County Commissioners does not assume responsibility for errors or omissions hereon.

Produced by BoCC - GIS Date: 2/8/2024

 Subject Property

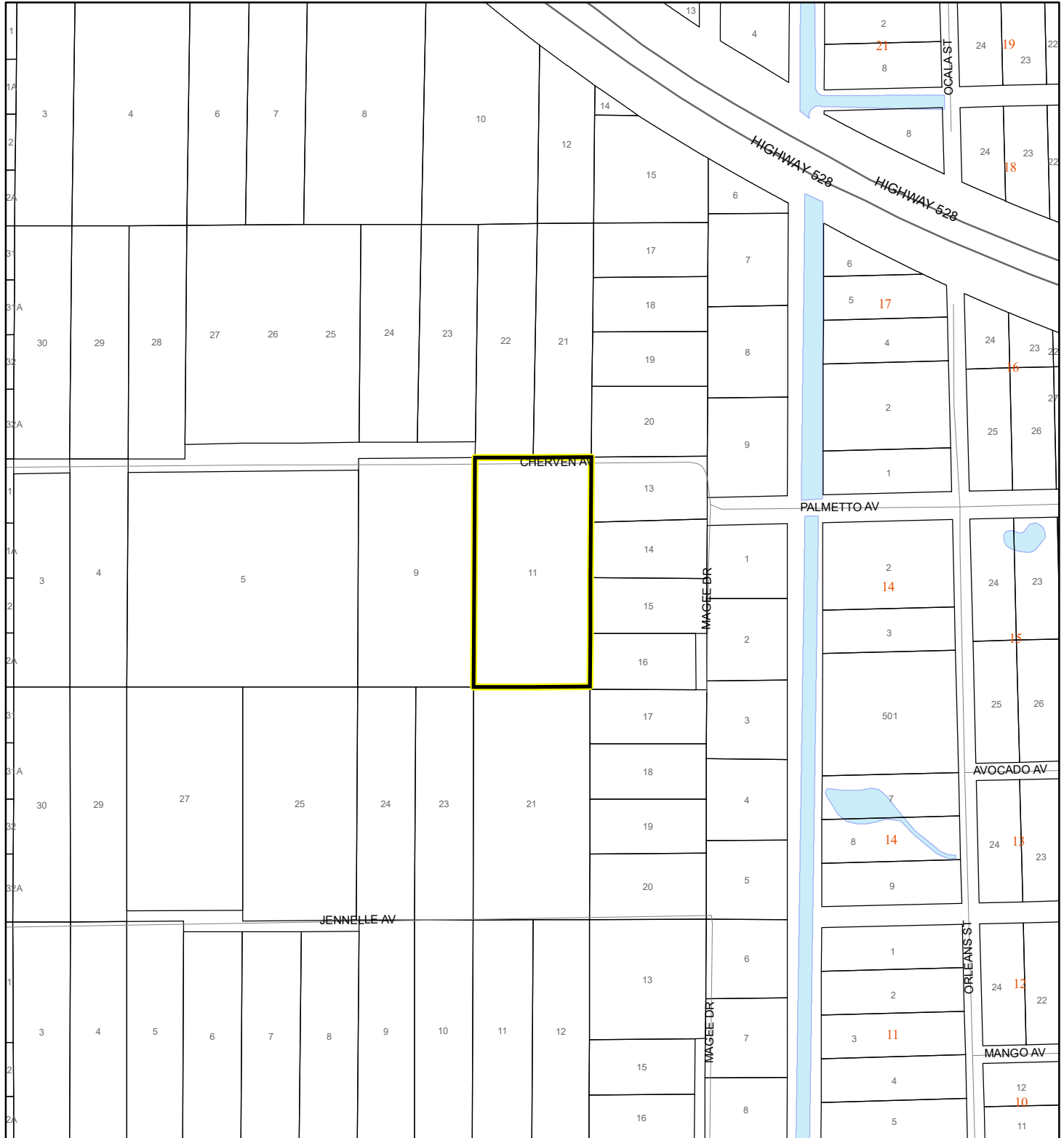
 Parcels



Eagle Nests
FWS

SCRUB JAY OCCUPANCY MAP

Schoolfield, Jonathan & Emily
24Z00001



1:4,800 or 1 inch = 400 feet

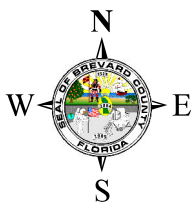
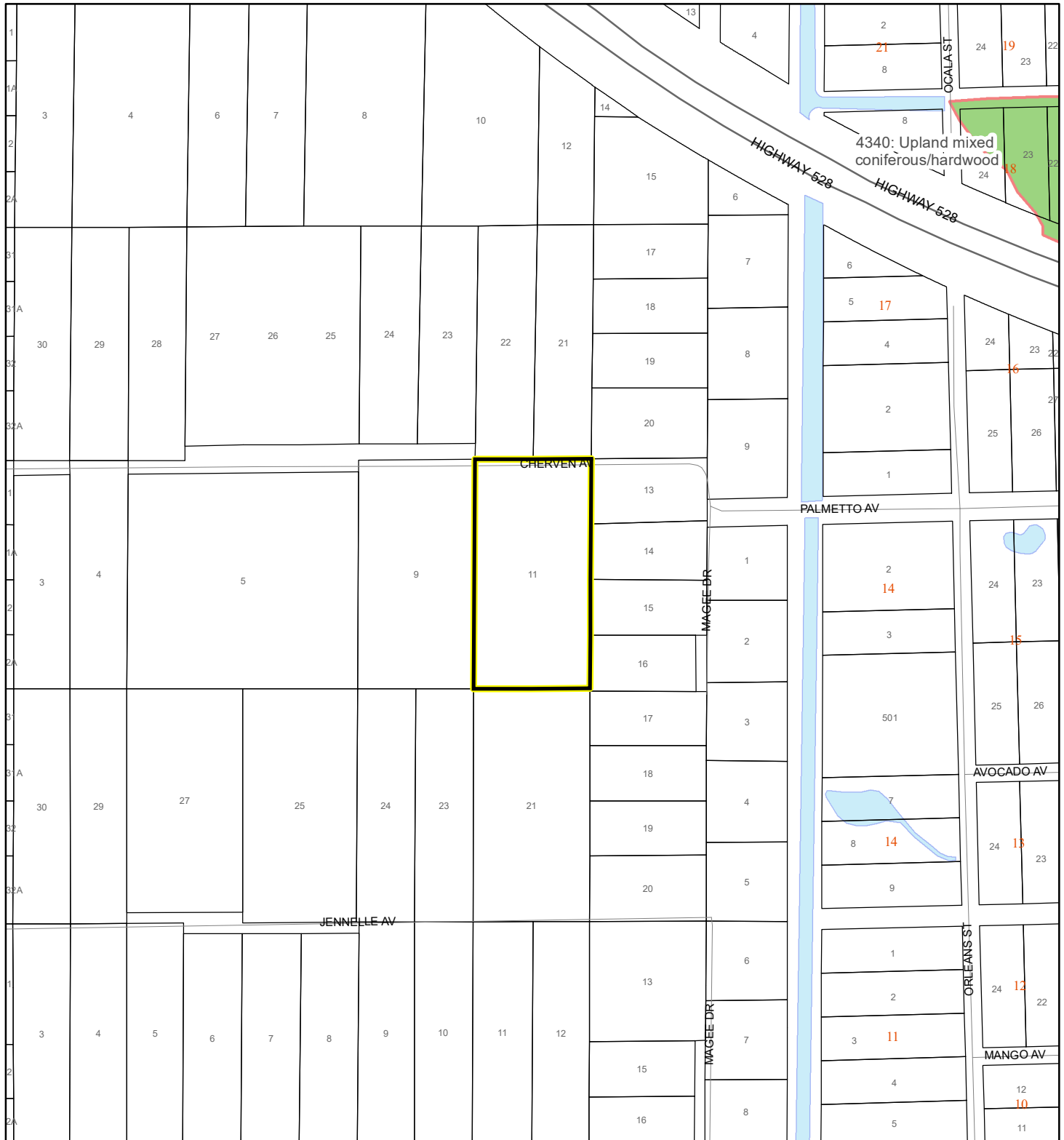
This map was compiled from recorded documents and does not reflect an actual survey. The Brevard County Board of County Commissioners does not assume responsibility for errors or omissions hereon.

Produced by BoCC - GIS Date: 2/8/2024

- Subject Property
- Parcels
- Scrub Jay Occupancy

SJRWMD FLUCCS UPLAND FORESTS - 4000 Series MAP

Schoolfield, Jonathan & Emily
24Z00001



1:4,800 or 1 inch = 400 feet

This map was compiled from recorded documents and does not reflect an actual survey. The Brevard County Board of County Commissioners does not assume responsibility for errors or omissions hereon.

Produced by BoCC - GIS Date: 2/8/2024

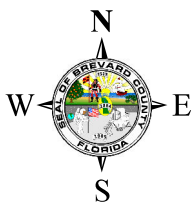
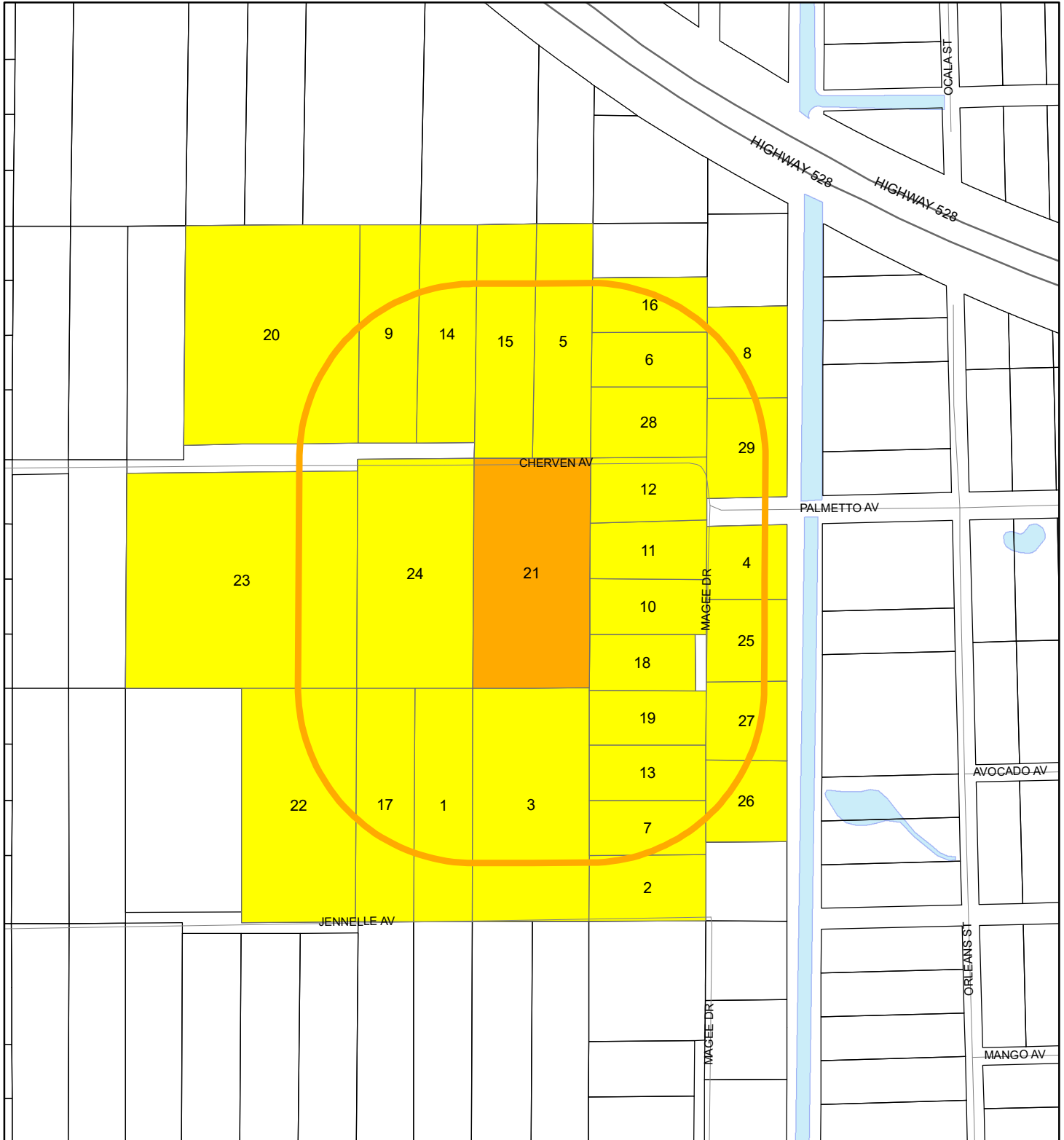
SJRWMD FLUCCS Upland Forests

- Upland Coniferous Forest - 4100 Series
- Upland Hardwood Forest - 4200 Series
- Upland Mixed Forest - 4300 Series
- Tree Plantations - 4400 Series

Subject Property Parcels

RADIUS MAP

Schoolfield, Jonathan & Emily
24Z00001




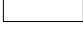


1:4,800 or 1 inch = 400 feet

Buffer Distance: 500 feet

This map was compiled from recorded documents and does not reflect an actual survey. The Brevard County Board of County Commissioners does not assume responsibility for errors or omissions hereon.

Produced by BoCC - GIS Date: 2/8/2024

-  Buffer
-  Subject Property
-  Notify Property
-  Parcels