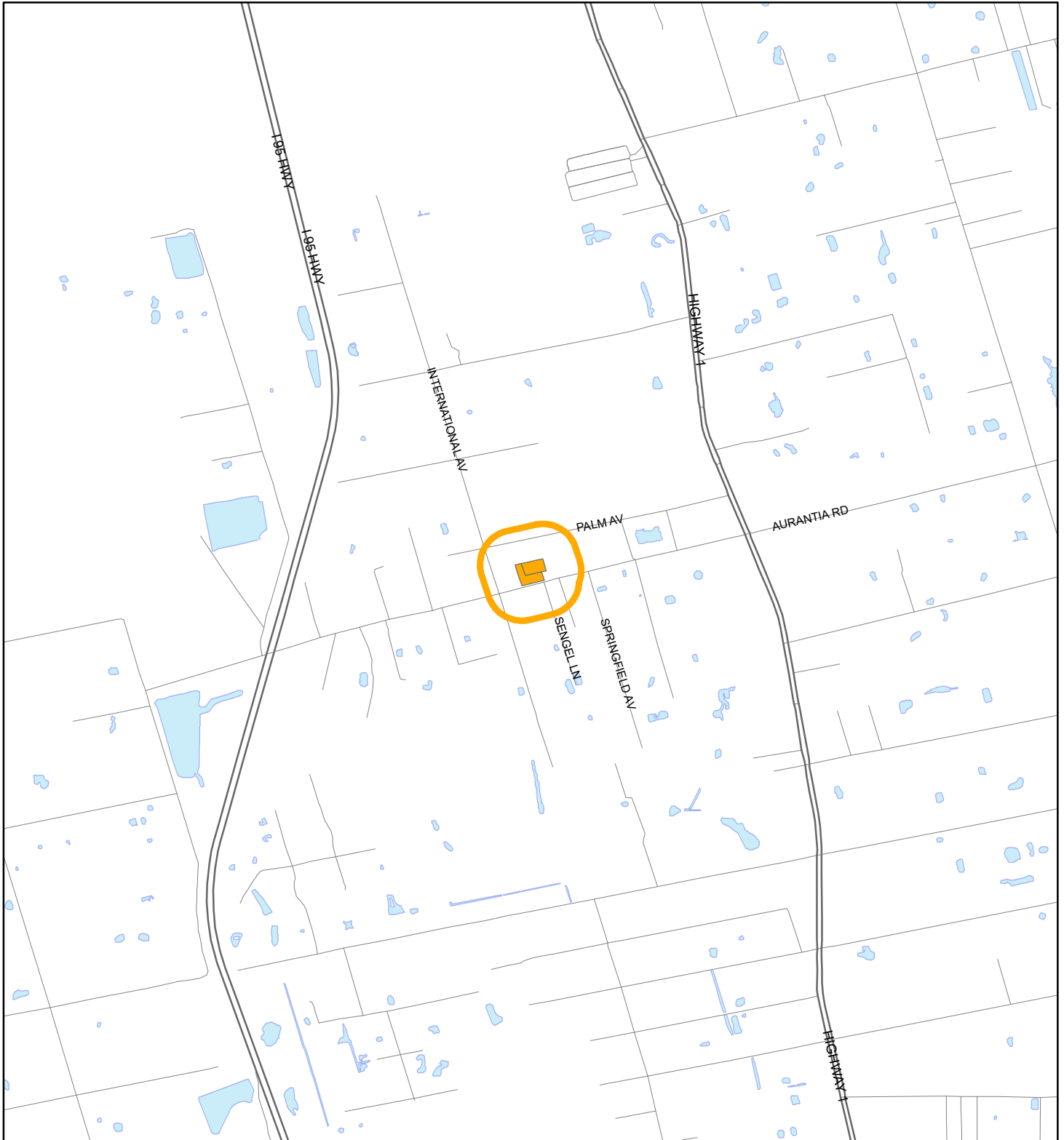


# LOCATION MAP

Nelsen, Virginia Anne  
23Z00082





1:24,000 or 1 inch = 2,000 feet

Buffer Distance: 500 feet

This map was compiled from recorded documents and does not reflect an actual survey. The Brevard County Board of County Commissioners does not assume responsibility for errors or omissions hereon.

Produced by BoCC - GIS Date: 11/6/2023

 Buffer  
 Subject Property

# ZONING MAP

Nelsen, Virginia Anne

23Z00082



1:4,800 or 1 inch = 400 feet

This map was compiled from recorded documents and does not reflect an actual survey. The Brevard County Board of County Commissioners does not assume responsibility for errors or omissions hereon.

Produced by BoCC - GIS Date: 11/6/2023

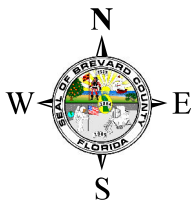
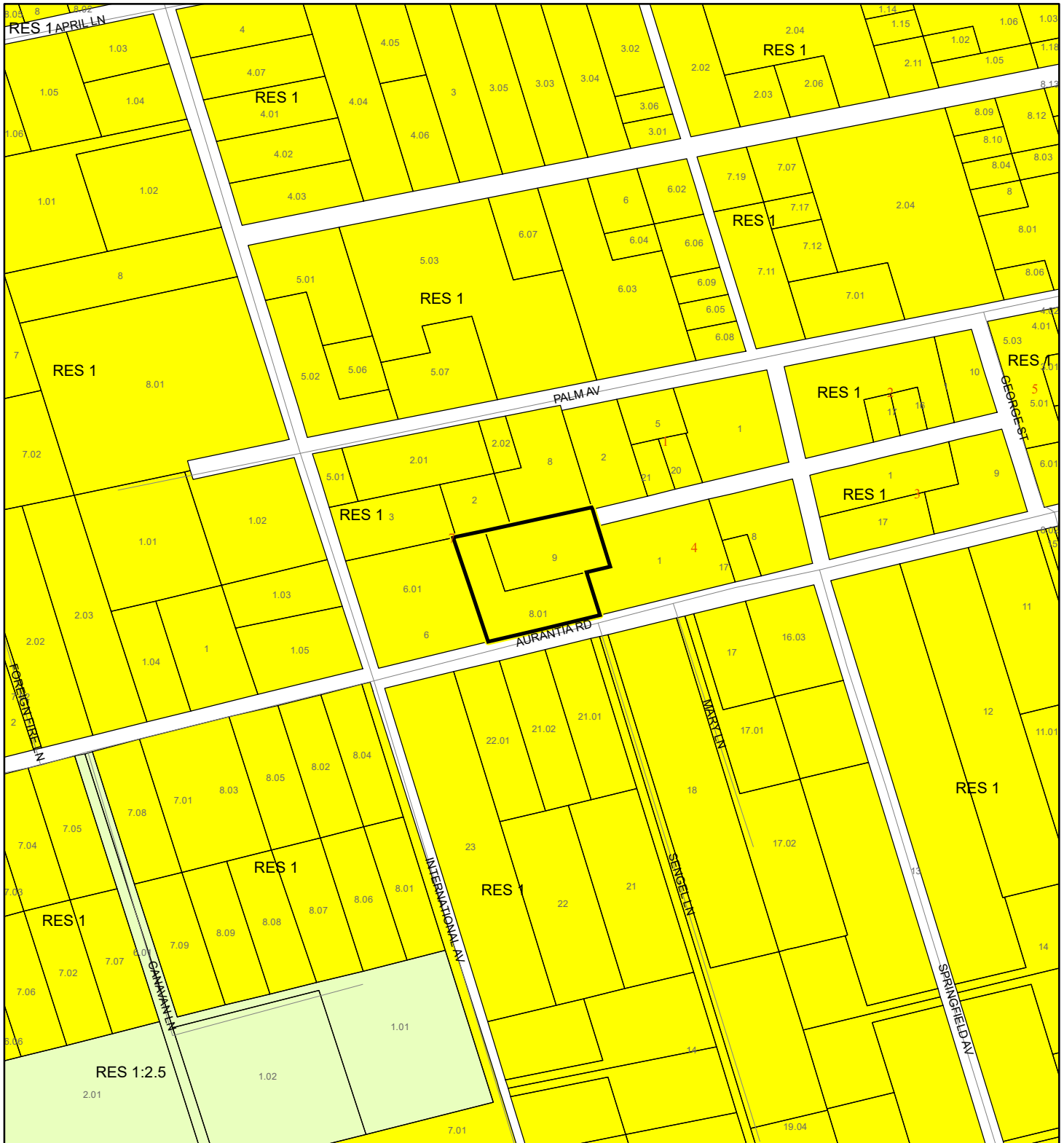
Subject Property

Parcels



Zoning

# FUTURE LAND USE MAP

Nelsen, Virginia Anne  
23Z00082



1:4,800 or 1 inch = 400 feet

 Subject Property  
 Parcels

This map was compiled from recorded documents and does not reflect an actual survey. The Brevard County Board of County Commissioners does not assume responsibility for errors or omissions hereon.

Produced by BoCC - GIS Date: 11/6/2023



# AERIAL MAP

Nelsen, Virginia Anne  
23Z00082




1:2,400 or 1 inch = 200 feet

PHOTO YEAR: 2023

This map was compiled from recorded documents and does not reflect an actual survey. The Brevard County Board of County Commissioners does not assume responsibility for errors or omissions hereon.

Produced by BoCC - GIS Date: 11/6/2023

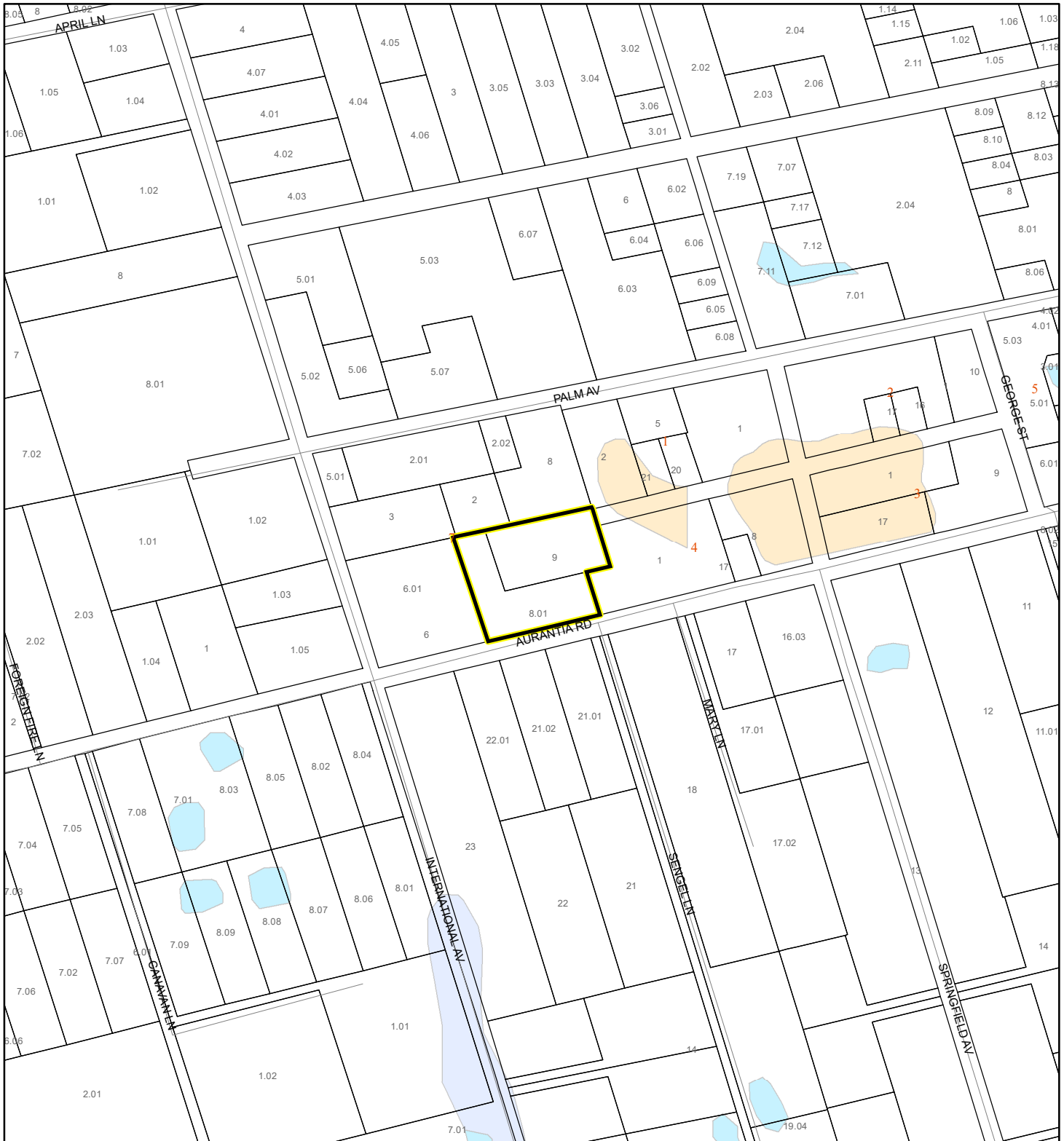
 Subject Property

 Parcels



# NWI WETLANDS MAP

Nelsen, Virginia Anne  
23Z00082







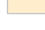
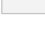

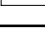


1:4,800 or 1 inch = 400 feet

This map was compiled from recorded documents and does not reflect an actual survey. The Brevard County Board of County Commissioners does not assume responsibility for errors or omissions hereon.

Produced by BoCC - GIS Date: 11/6/2023

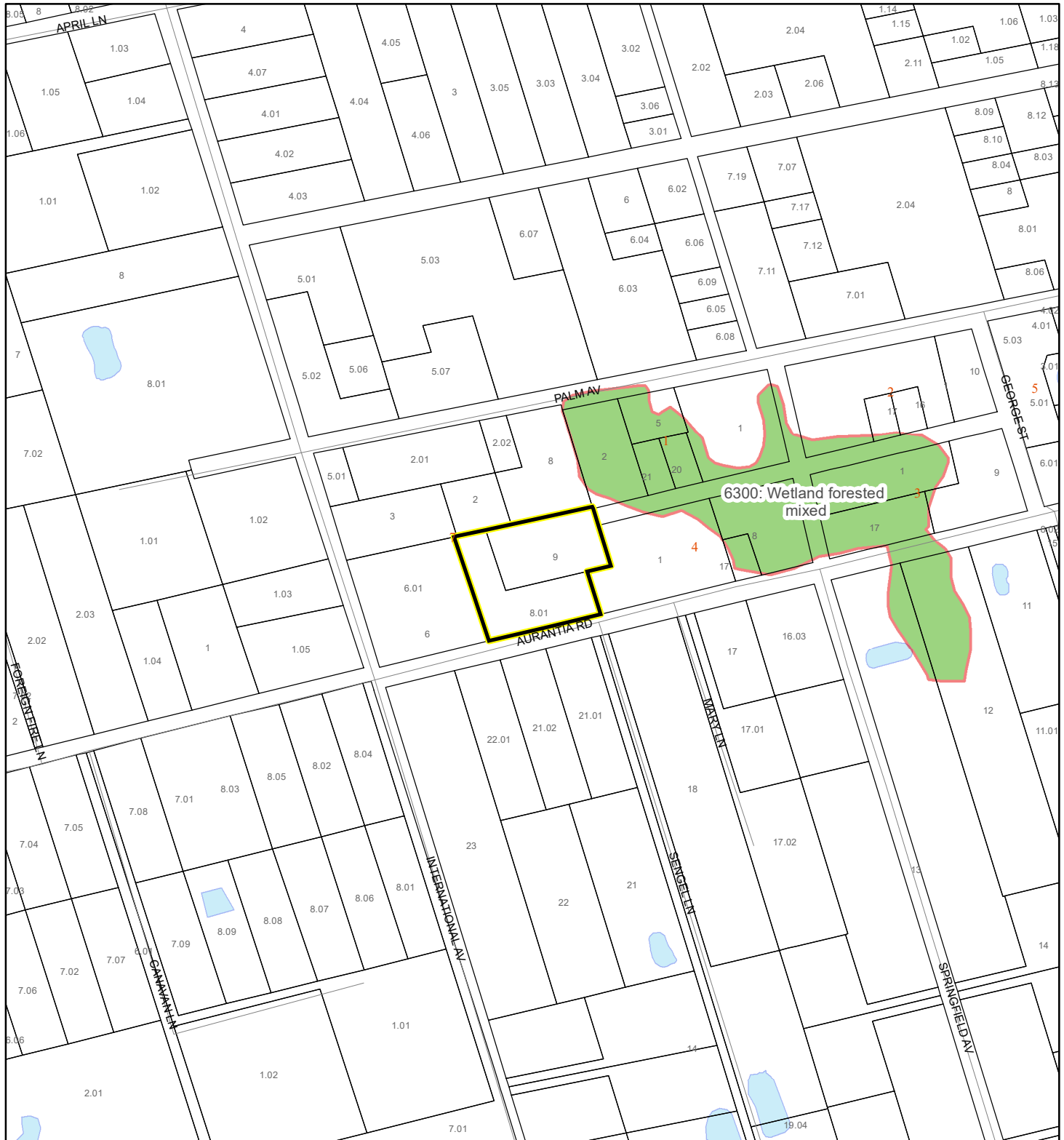
## National Wetlands Inventory (NWI)

 Estuarine and Marine Deepwater	 Freshwater Pond
 Estuarine and Marine Wetland	 Lake
 Freshwater Emergent Wetland	 Other
 Freshwater Forested/Shrub Wetland	 Riverine
 Subject Property	
 Parcels	

# SJRWMD FLUCCS WETLANDS - 6000 Series MAP

Nelsen, Virginia Anne

23Z00082



1:4,800 or 1 inch = 400 feet

This map was compiled from recorded documents and does not reflect an actual survey. The Brevard County Board of County Commissioners does not assume responsibility for errors or omissions hereon.

Produced by BoCC - GIS Date: 11/6/2023

## SJRWMD FLUCCS WETLANDS

- Wetland Hardwood Forests - Series 6100
- Wetland Coniferous Forest - Series 6200
- Wetland Forested Mixed - Series 6300
- Vegetated Non-Forested Wetlands - Series 6400
- Non-Vegetated Wetland - Series 6500

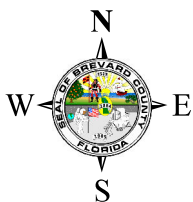
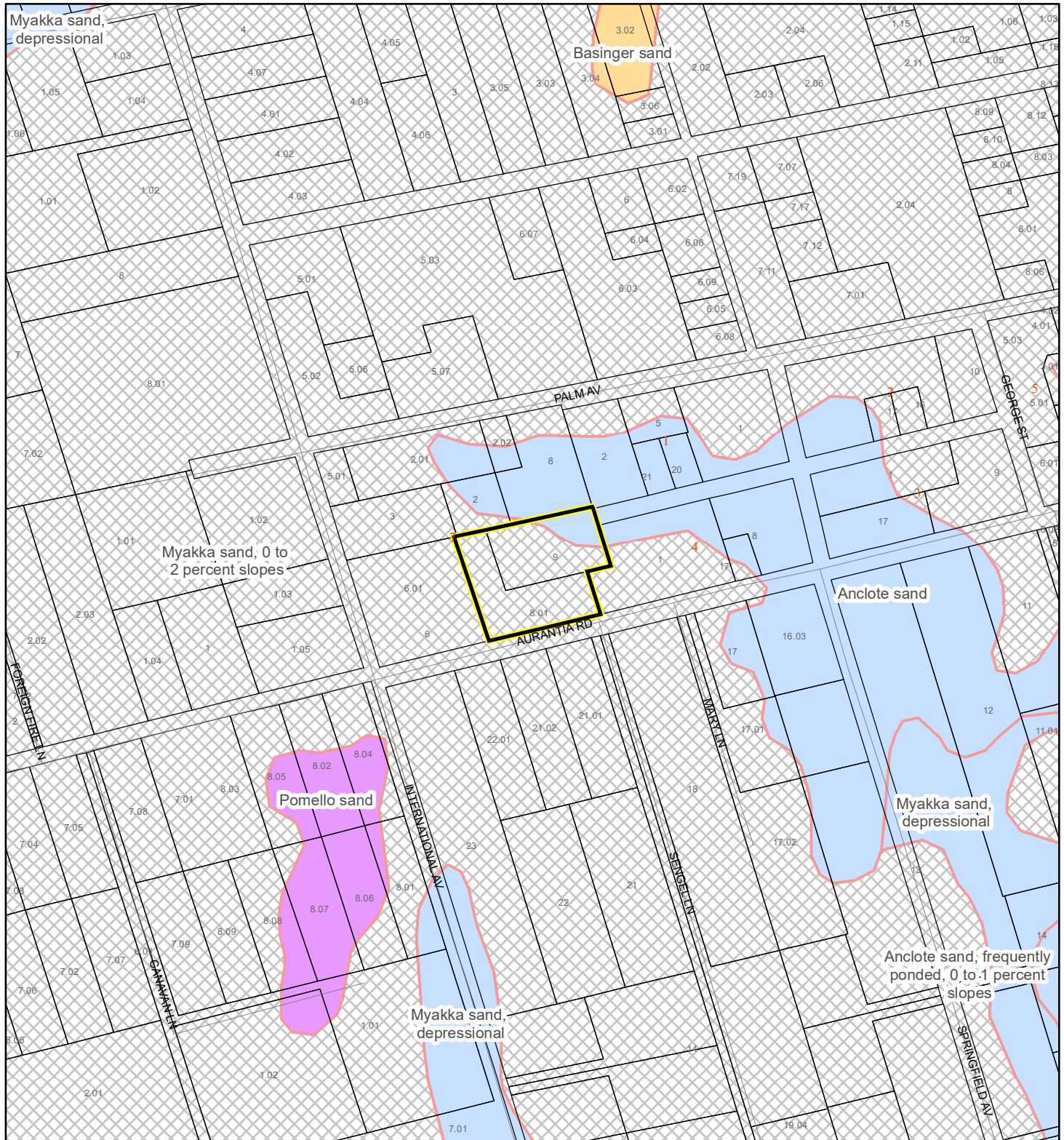
Subject Property

Parcels

# USDA SCSSS SOILS MAP

Nelsen, Virginia Anne

23Z00082




1:4,800 or 1 inch = 400 feet


This map was compiled from recorded documents and does not reflect an actual survey. The Brevard County Board of County Commissioners does not assume responsibility for errors or omissions hereon.

Produced by BoCC - GIS Date: 11/6/2023

## USDA SCSSS Soils

 Aquifer and Hydric

 Aquifer

 Hydric

 None

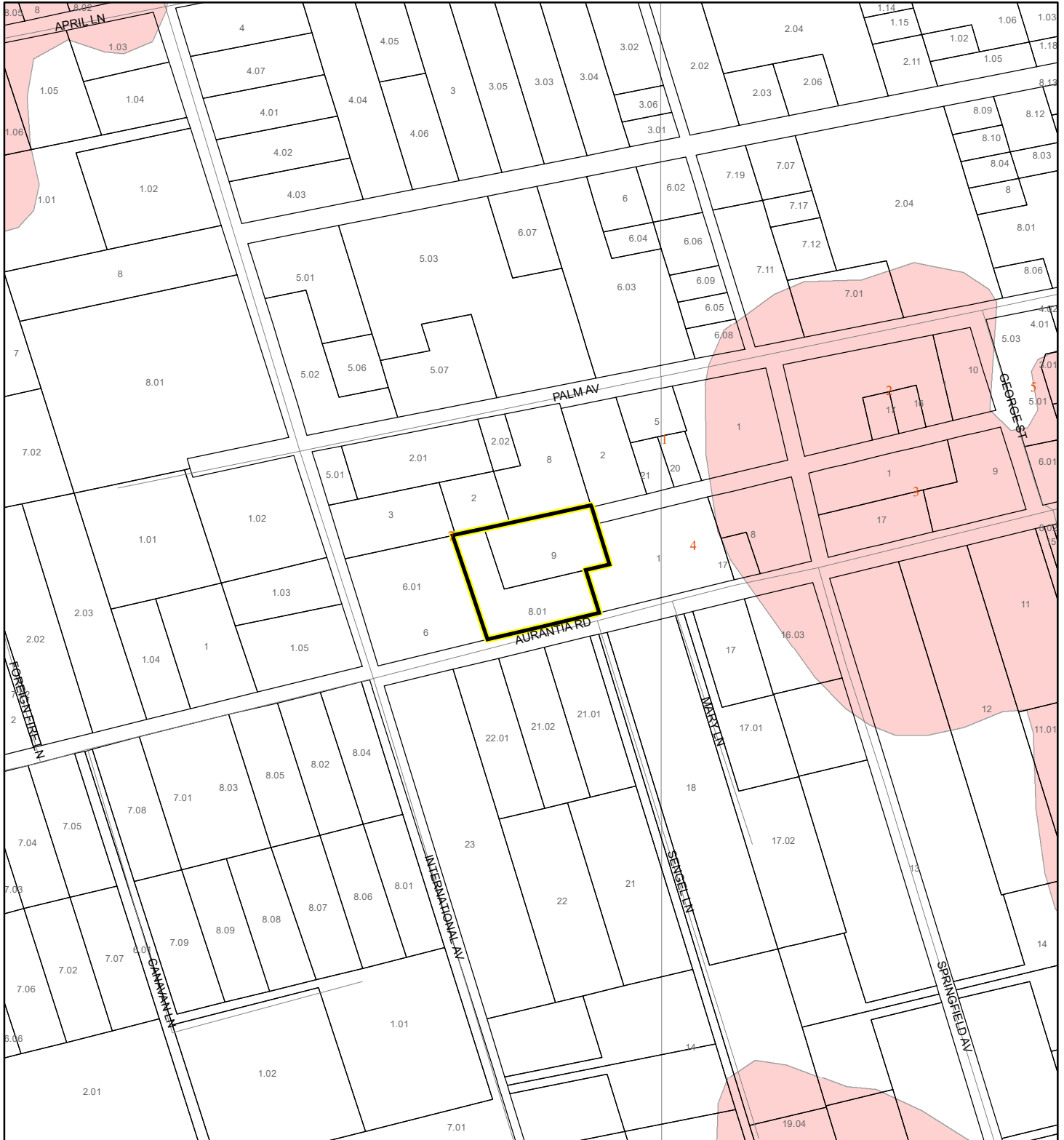
 Subject Property

 Parcels

# FEMA FLOOD ZONES MAP

Nelsen, Virginia Anne

23Z00082



1:4,800 or 1 inch = 400 feet

This map was compiled from recorded documents and does not reflect an actual survey. The Brevard County Board of County Commissioners does not assume responsibility for errors or omissions hereon.

Produced by BoCC - GIS Date: 11/6/2023

## FEMA Flood Zones

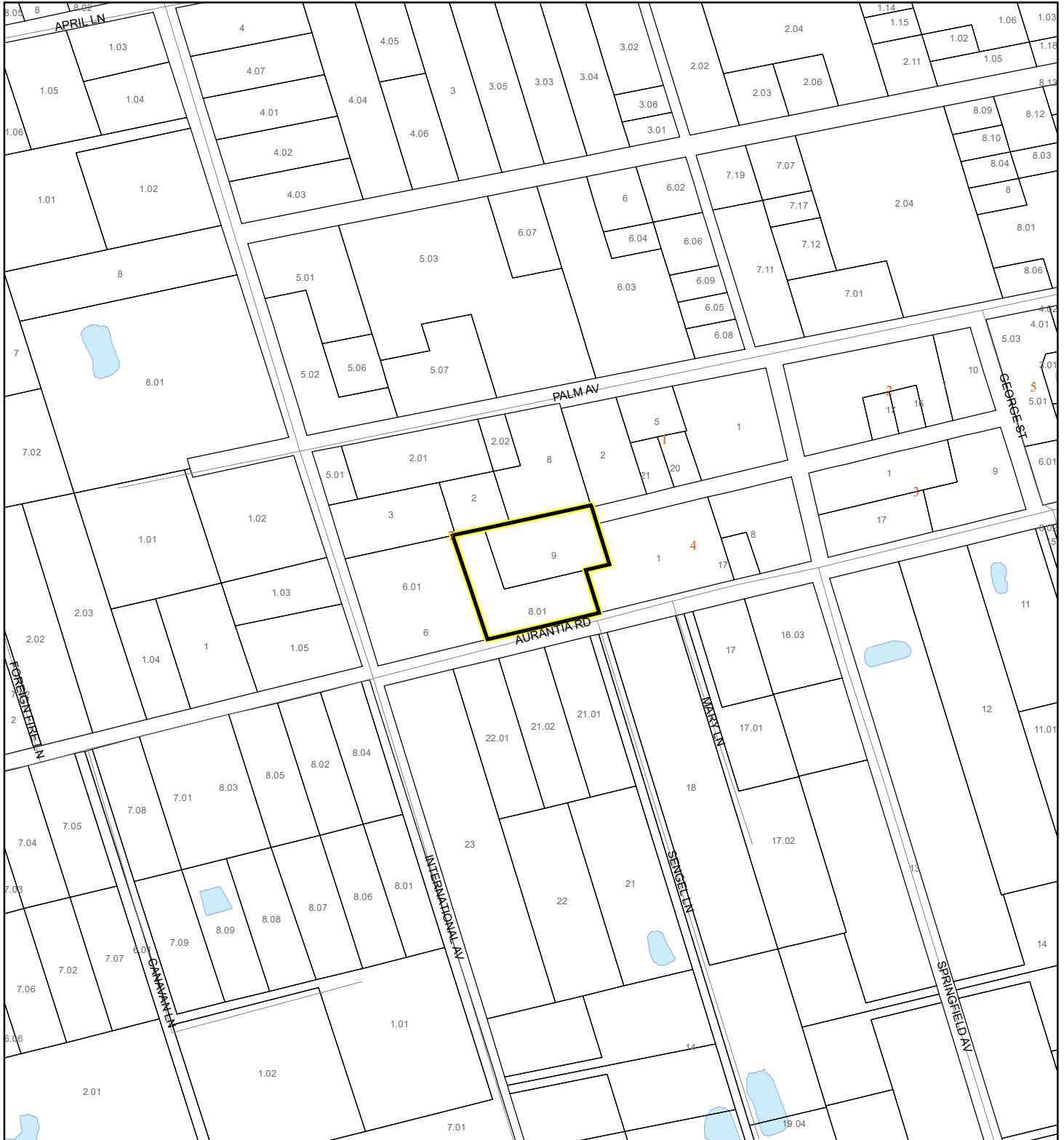
- |                  |            |   |
|------------------|------------|---|
| A                | AO         | X |
| AE               | Open Water |   |
| AH               | VE         |   |
| Subject Property | Parcels    |   |



# COASTAL HIGH HAZARD AREA MAP

Nelsen, Virginia Anne

23Z00082



1:4,800 or 1 inch = 400 feet


This map was compiled from recorded documents and does not reflect an actual survey. The Brevard County Board of County Commissioners does not assume responsibility for errors or omissions hereon.

Produced by BoCC - GIS Date: 11/6/2023

 Subject Property

 Parcels

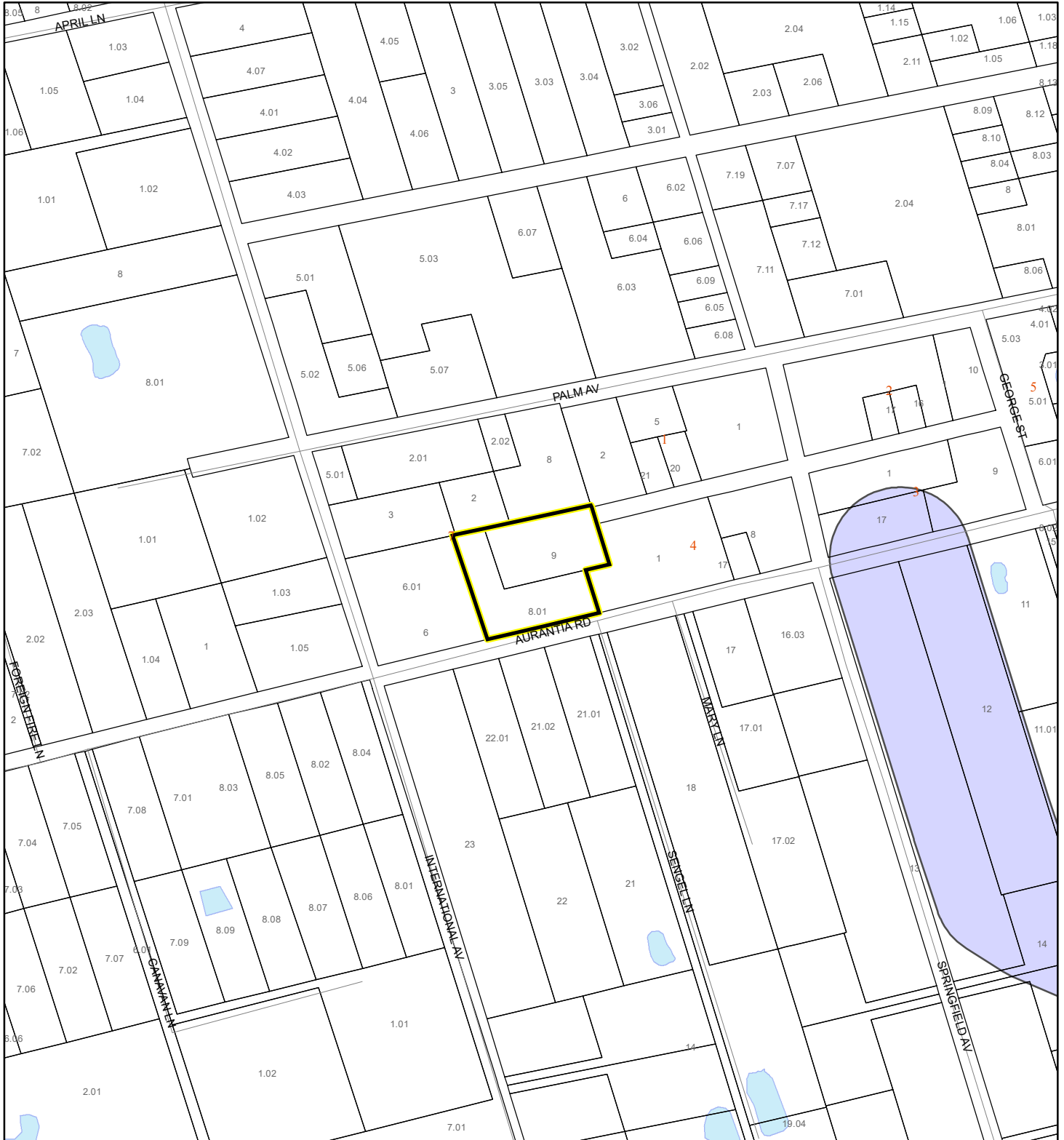
**Coastal High Hazard Area**

 SurgeZoneCat1

# INDIAN RIVER LAGOON SEPTIC OVERLAY MAP

Nelsen, Virginia Anne

23Z00082



1:4,800 or 1 inch = 400 feet

This map was compiled from recorded documents and does not reflect an actual survey. The Brevard County Board of County Commissioners does not assume responsibility for errors or omissions hereon.

Produced by BoCC - GIS Date: 11/6/2023

 Subject Property

 Parcels

**Septic Overlay**

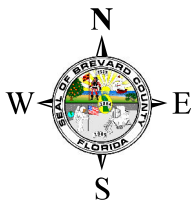
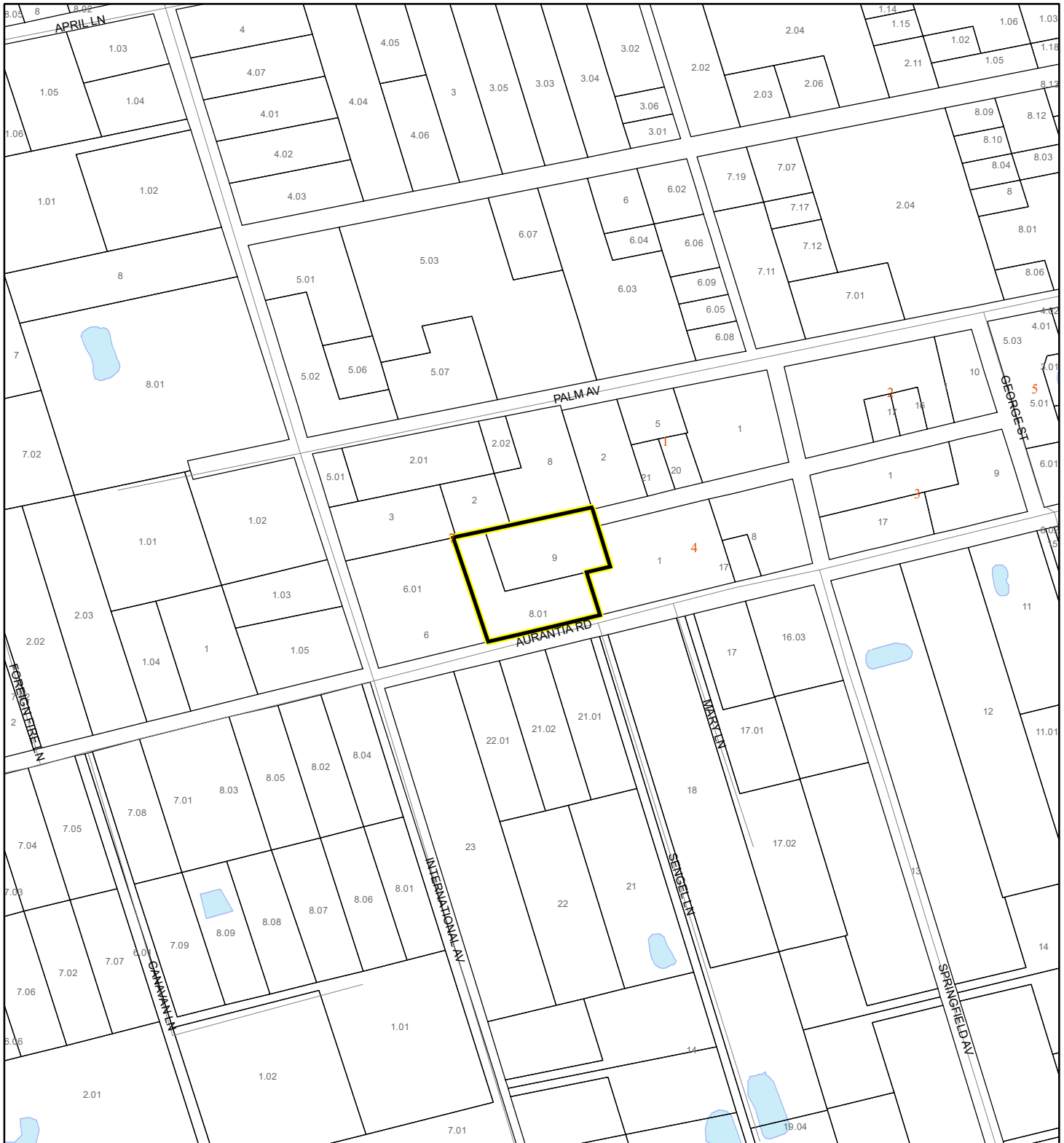
 40 Meters

 60 Meters

 All Distances

# EAGLE NESTS MAP

Nelsen, Virginia Anne  
23Z00082



1:4,800 or 1 inch = 400 feet

This map was compiled from recorded documents and does not reflect an actual survey. The Brevard County Board of County Commissioners does not assume responsibility for errors or omissions herein.

Produced by BoCC - GIS Date: 11/6/2023

 Subject Property

 Parcels

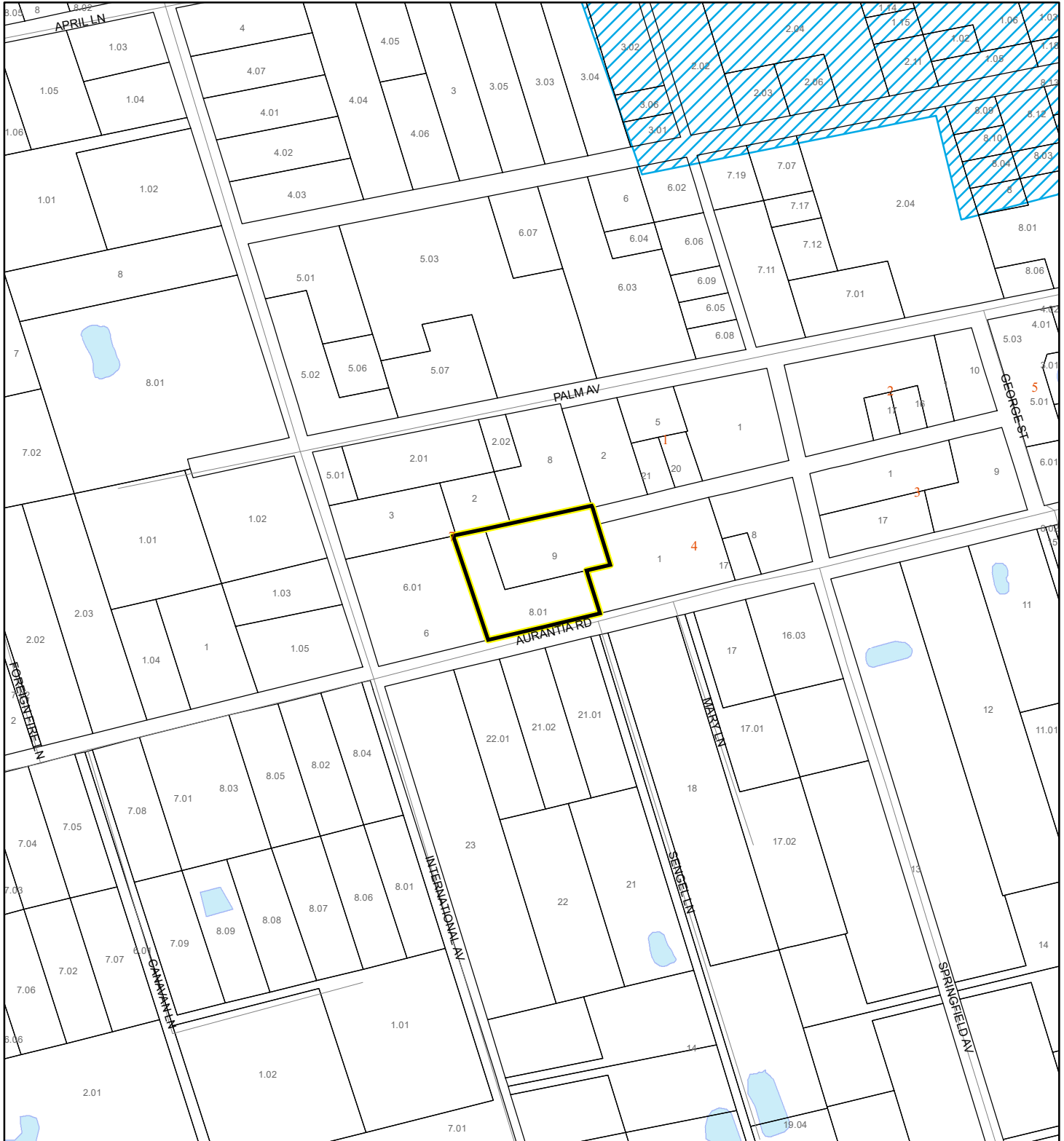
 Eagle Nests  
FWS



# SCRUB JAY OCCUPANCY MAP

Nelsen, Virginia Anne




23Z00082



1:4,800 or 1 inch = 400 feet

This map was compiled from recorded documents and does not reflect an actual survey. The Brevard County Board of County Commissioners does not assume responsibility for errors or omissions hereon.

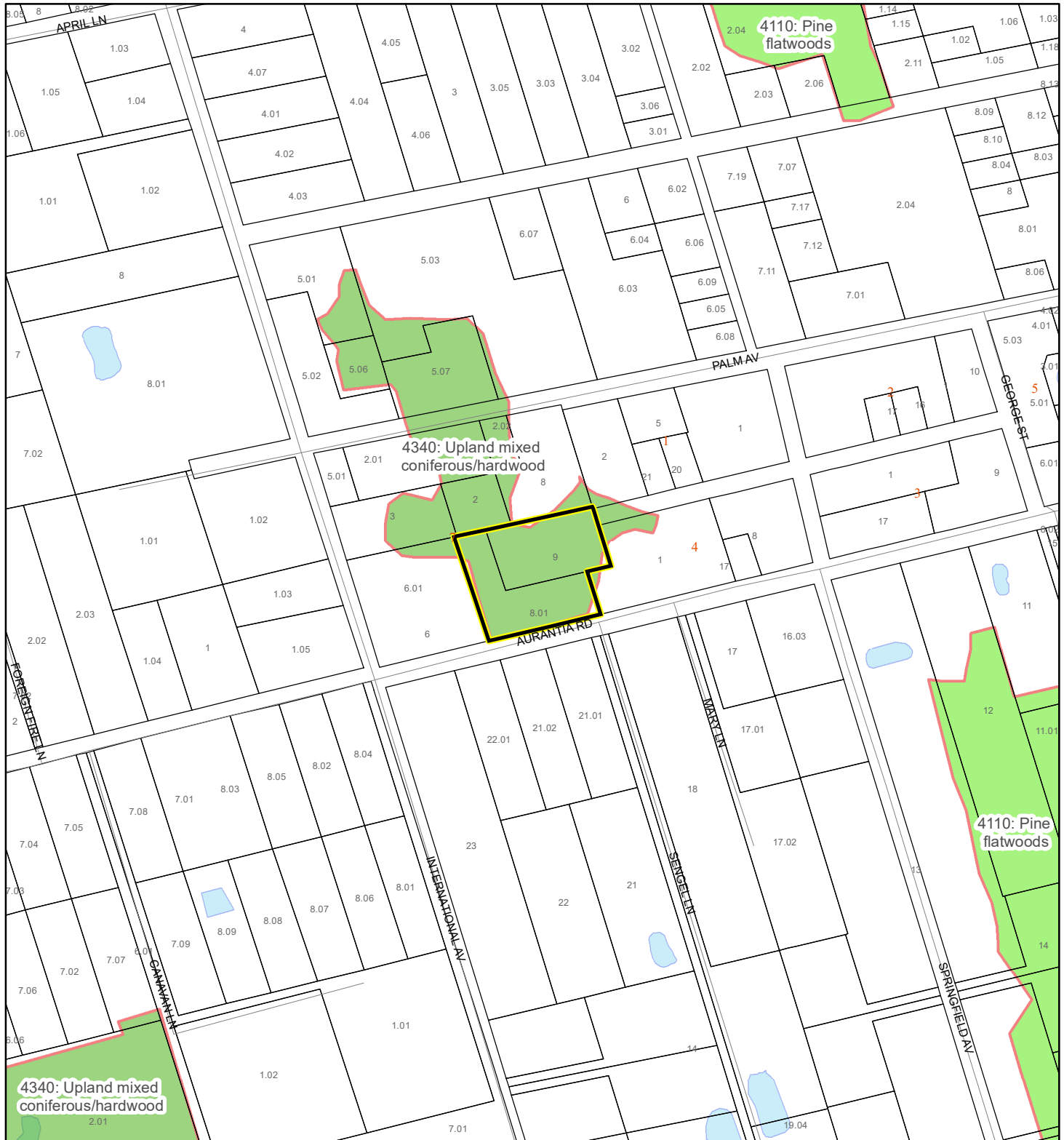
Produced by BoCC - GIS Date: 11/6/2023

-  Subject Property
-  Parcels
-  Scrub Jay Occupancy

# SJRWMD FLUCCS UPLAND FORESTS - 4000 Series MAP

Nelsen, Virginia Anne

23Z00082



1:4,800 or 1 inch = 400 feet

This map was compiled from recorded documents and does not reflect an actual survey. The Brevard County Board of County Commissioners does not assume responsibility for errors or omissions hereon.

Produced by BoCC - GIS Date: 11/6/2023

## SJRWMD FLUCCS Upland Forests

- Upland Coniferous Forest - 4100 Series
- Upland Hardwood Forest - 4200 Series
- Upland Mixed Forest - 4300 Series
- Tree Plantations - 4400 Series

Subject Property

Parcels