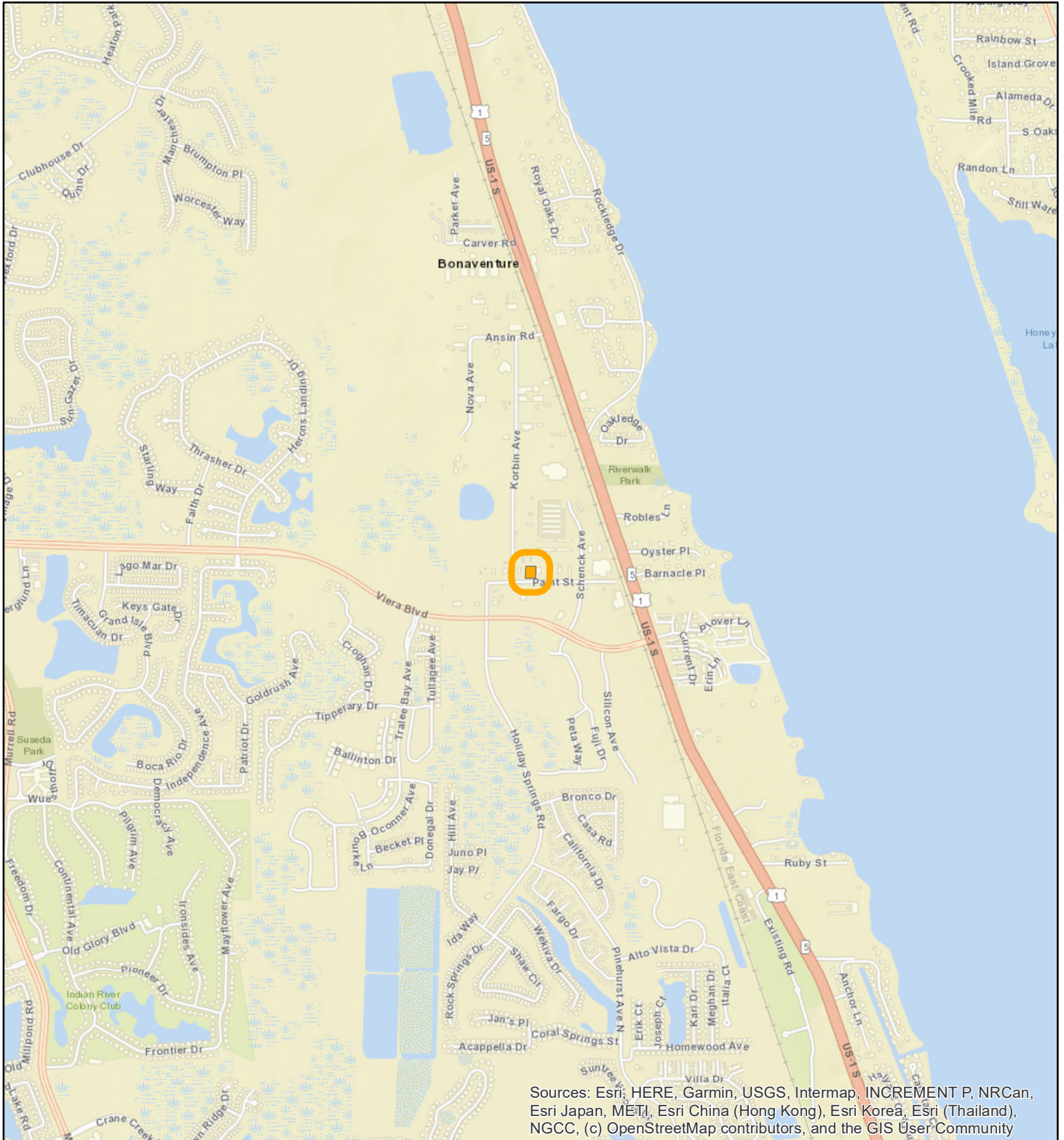
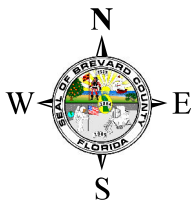


# LOCATION MAP

MANNINO, SALVATORE JR  
26V00013



Sources: Esri, HERE, Garmin, USGS, Intermap, INCREMENT P, NRCan, Esri Japan, METI, Esri China (Hong Kong), Esri Korea, Esri (Thailand), NGCC, (c) OpenStreetMap contributors, and the GIS User Community





1:24,000 or 1 inch = 2,000 feet

Buffer Distance: 200 feet

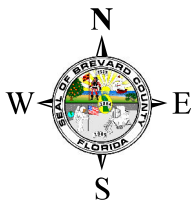
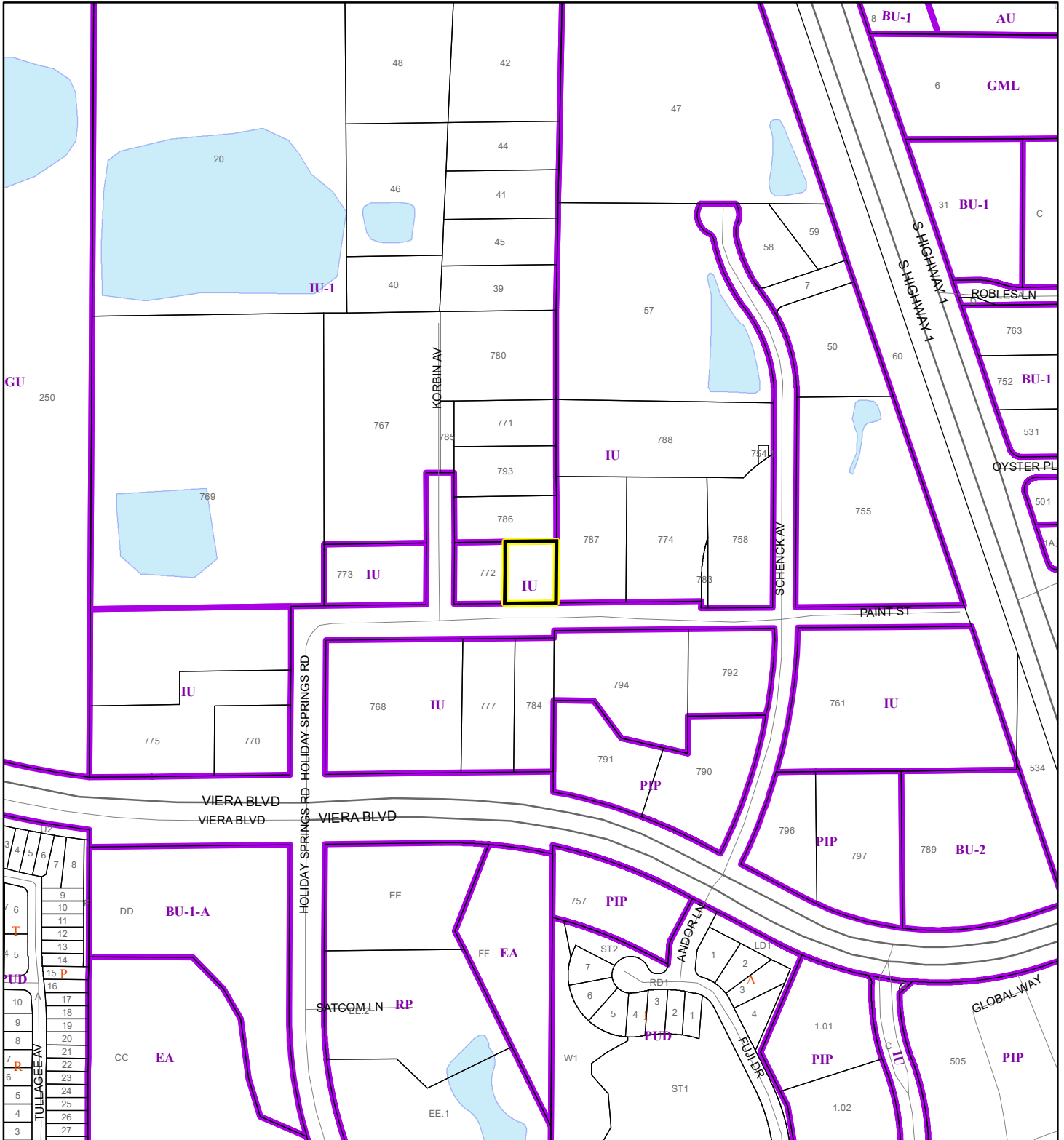
This map was compiled from recorded documents and does not reflect an actual survey. The Brevard County Board of County Commissioners does not assume responsibility for errors or omissions hereon.

Produced by BoCC - GIS Date: 2/19/2026

-  Buffer
-  Subject Property

# ZONING MAP

MANNINO, SALVATORE JR  
26V00013



1:4,800 or 1 inch = 400 feet

- Subject Property
- Parcels
- Zoning

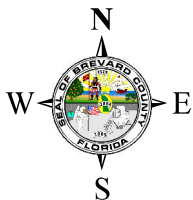
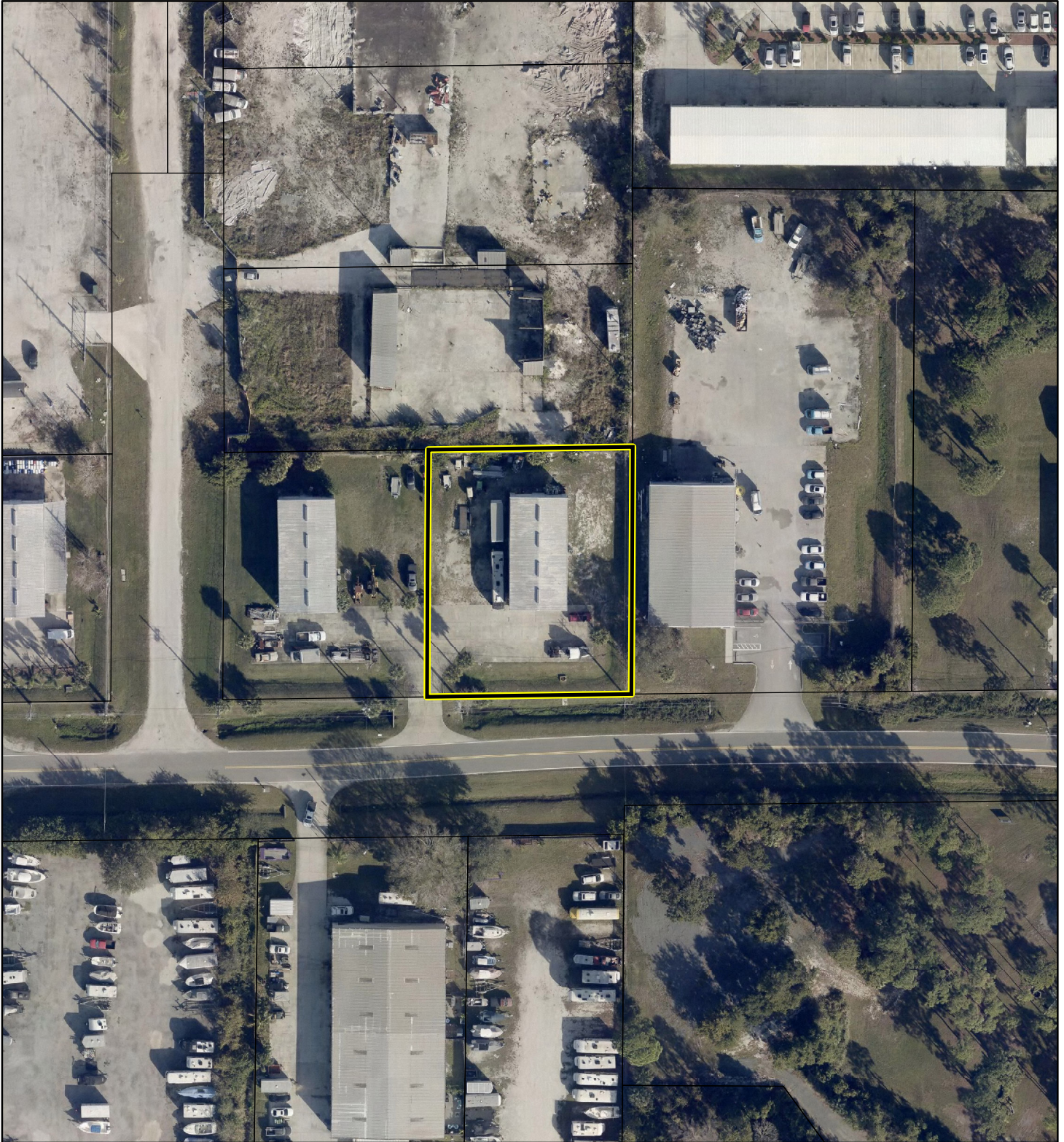
This map was compiled from recorded documents and does not reflect an actual survey. The Brevard County Board of County Commissioners does not assume responsibility for errors or omissions hereon.

Produced by BoCC - GIS Date: 2/19/2026

# AERIAL MAP

MANNINO, SALVATORE JR

26V00013




1:1,200 or 1 inch = 100 feet

PHOTO YEAR: 2025

This map was compiled from recorded documents and does not reflect an actual survey. The Brevard County Board of County Commissioners does not assume responsibility for errors or omissions hereon.

Produced by BoCC - GIS Date: 2/19/2026

 Subject Property

 Parcels