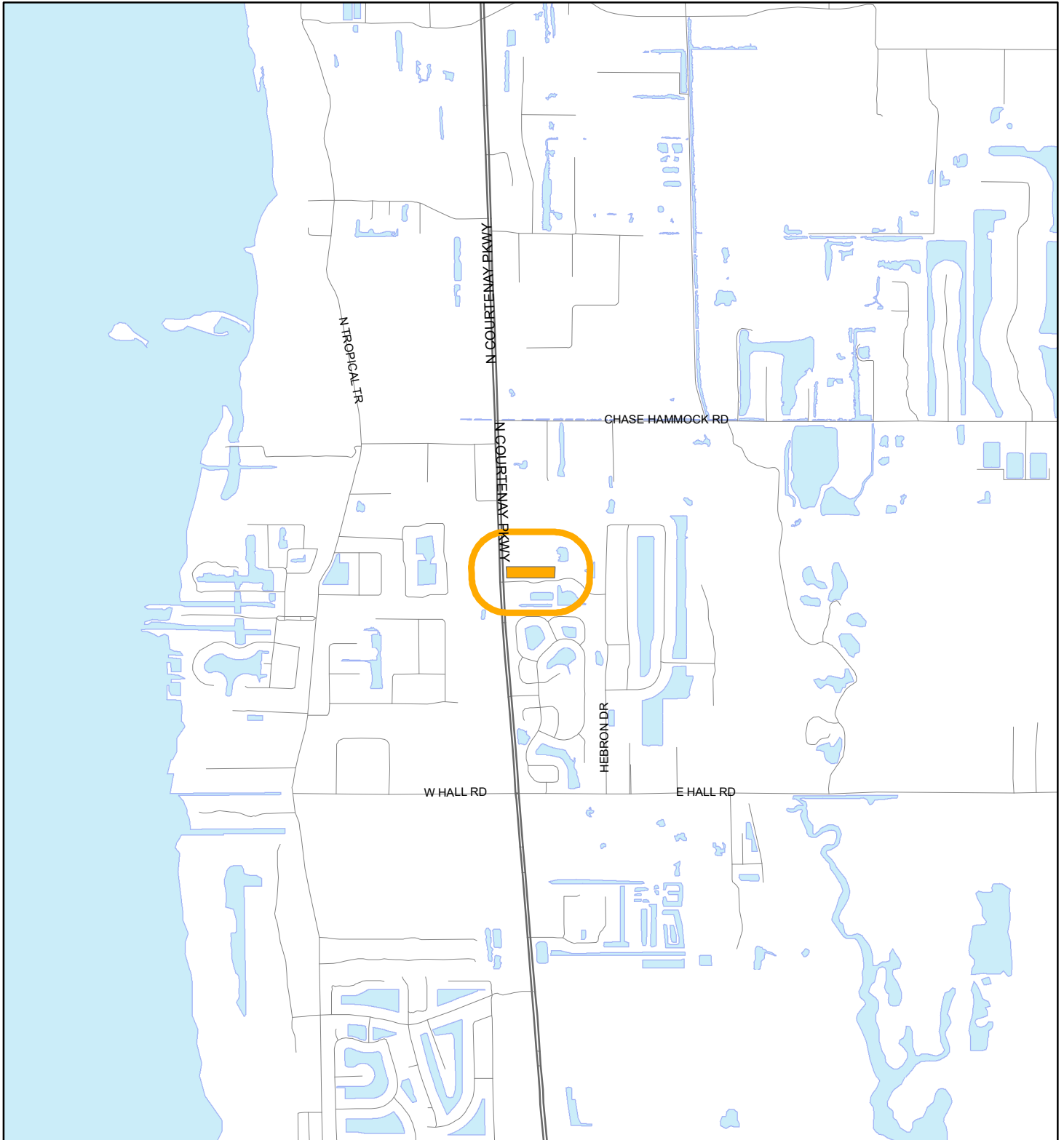


LOCATION MAP

SCHWA INC
24Z00051





1:24,000 or 1 inch = 2,000 feet

Buffer Distance: 500 feet

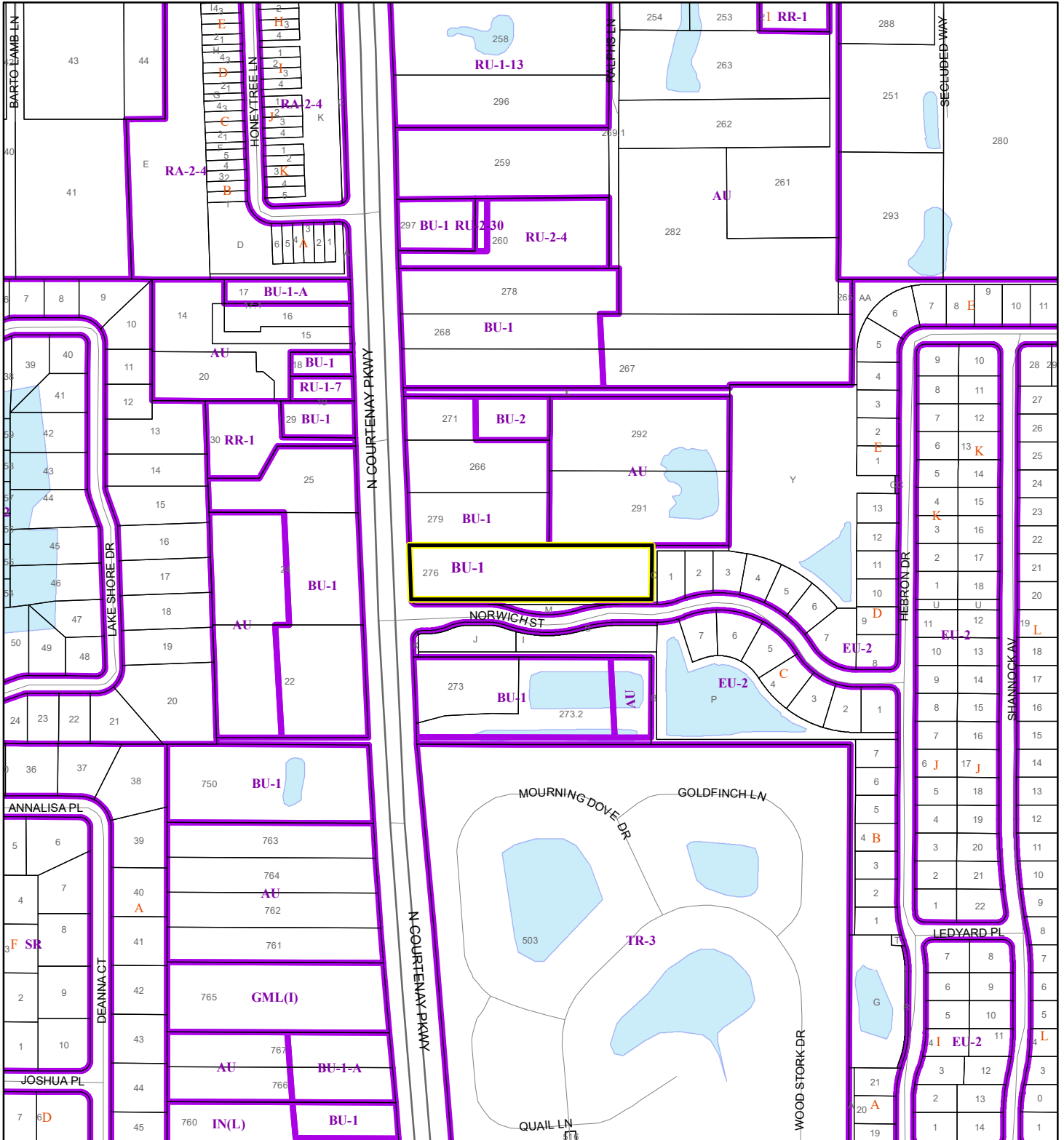
This map was compiled from recorded documents and does not reflect an actual survey. The Brevard County Board of County Commissioners does not assume responsibility for errors or omissions hereon.

Produced by BoCC - GIS Date: 9/11/2024

-  Buffer
-  Subject Property

ZONING MAP

SCHWA INC
24Z00051



1:4,800 or 1 inch = 400 feet

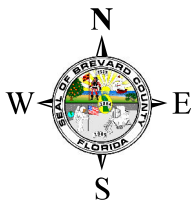
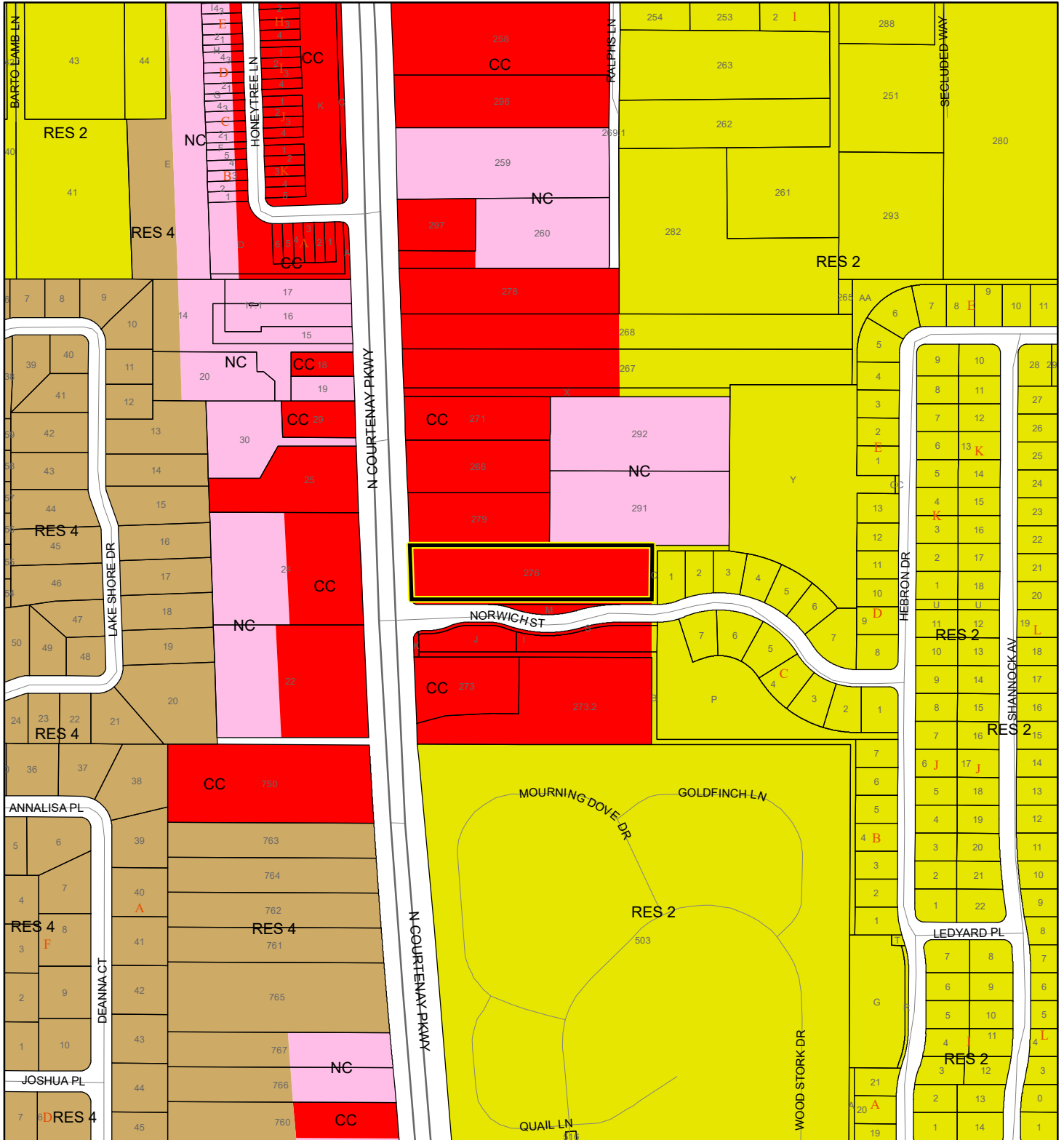
This map was compiled from recorded documents and does not reflect an actual survey. The Brevard County Board of County Commissioners does not assume responsibility for errors or omissions hereon.

Produced by BoCC - GIS Date: 9/11/2024



- Subject Property
- Parcels
- Zoning

FUTURE LAND USE MAP

SCHWA INC
24Z00051



1:4,800 or 1 inch = 400 feet

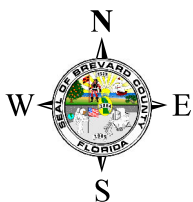
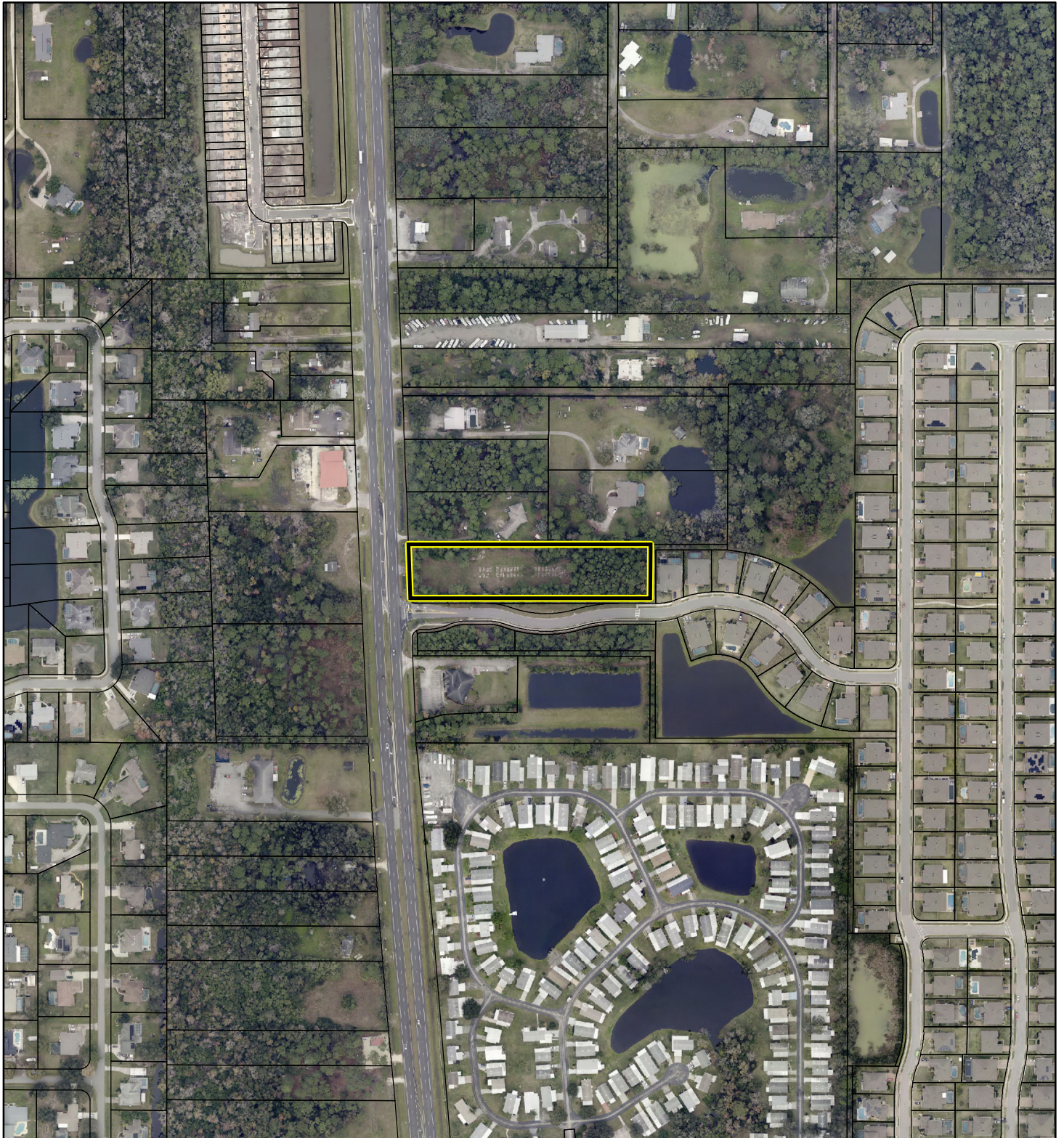
 Subject Property
 Parcels

This map was compiled from recorded documents and does not reflect an actual survey. The Brevard County Board of County Commissioners does not assume responsibility for errors or omissions hereon.

Produced by BoCC - GIS Date: 9/11/2024

AERIAL MAP

SCHWA INC
24Z00051




1:4,800 or 1 inch = 400 feet

PHOTO YEAR: 2024

This map was compiled from recorded documents and does not reflect an actual survey. The Brevard County Board of County Commissioners does not assume responsibility for errors or omissions hereon.

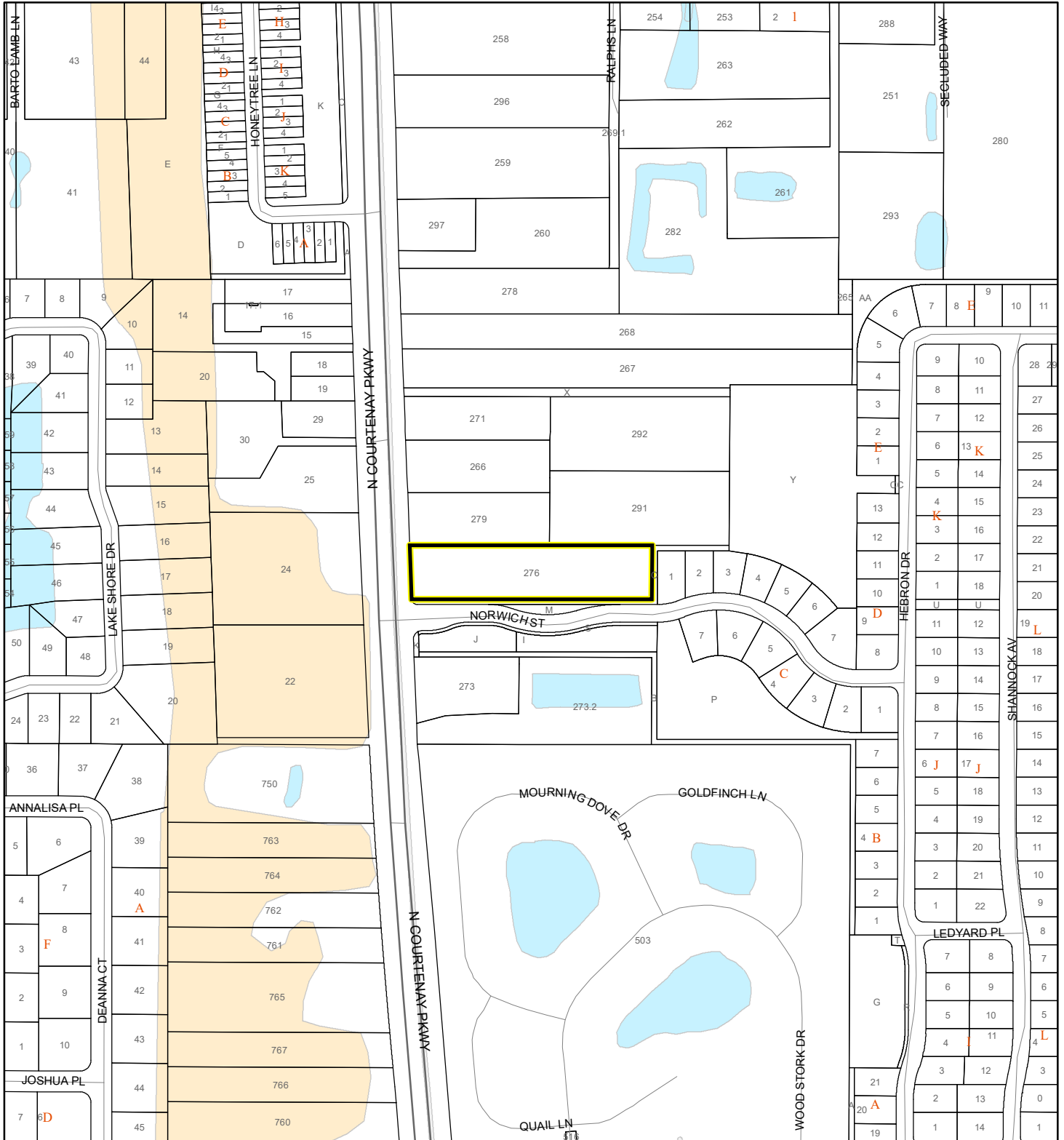
Produced by BoCC - GIS Date: 9/11/2024

 Subject Property

 Parcels

NWI WETLANDS MAP

SCHWA INC
24Z00051










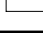


1:4,800 or 1 inch = 400 feet

This map was compiled from recorded documents and does not reflect an actual survey. The Brevard County Board of County Commissioners does not assume responsibility for errors or omissions hereon.

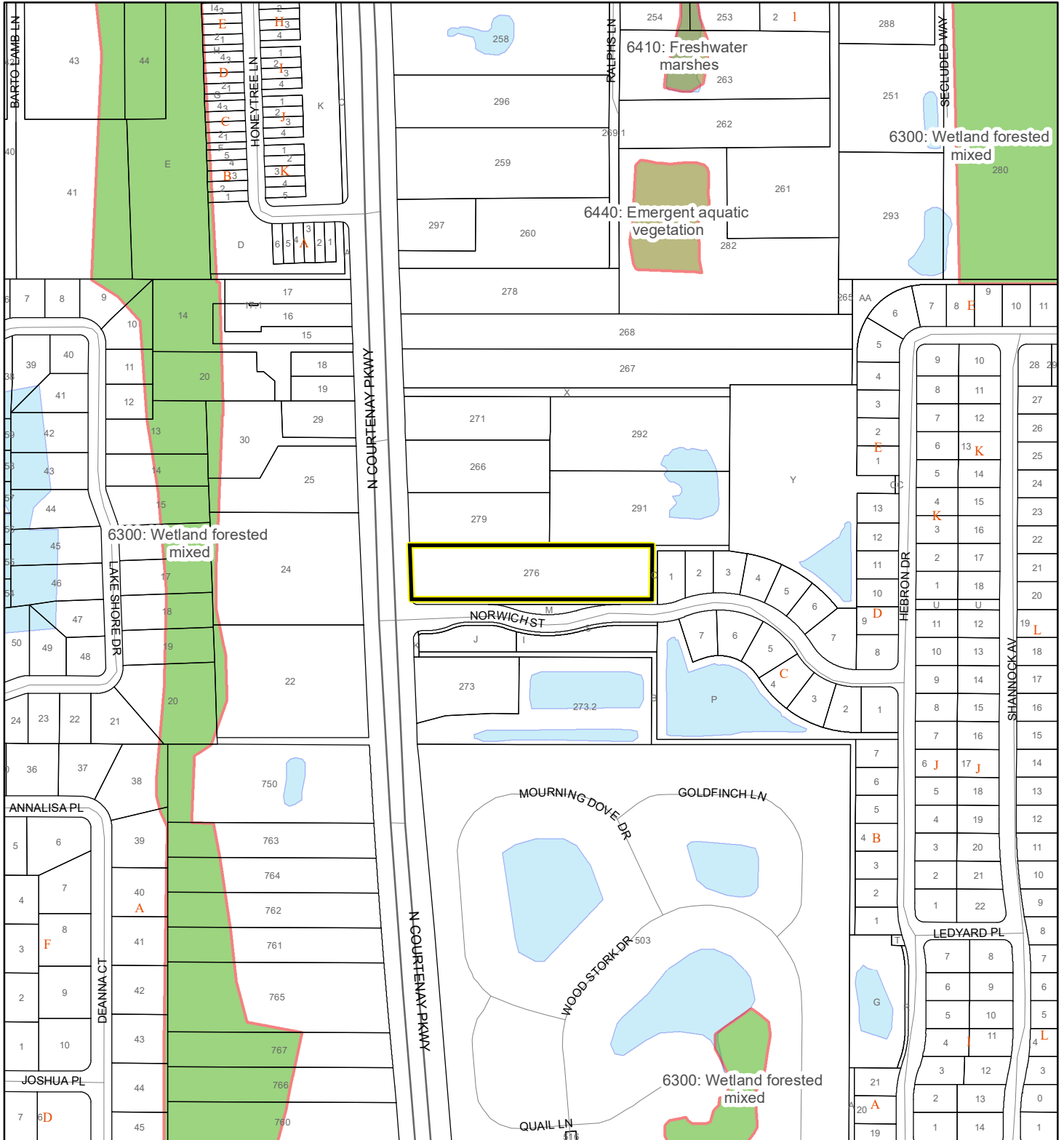
Produced by BoCC - GIS Date: 9/11/2024

National Wetlands Inventory (NWI)

- | | |
|--|--|
|  Estuarine and Marine Deepwater |  Freshwater Pond |
|  Estuarine and Marine Wetland |  Lake |
|  Freshwater Emergent Wetland |  Other |
|  Freshwater Forested/Shrub Wetland |  Riverine |
| |  Subject Property |
| |  Parcels |

SJRWMD FLUCCS WETLANDS - 6000 Series MAP

SCHWA INC
24Z00051



1:4,800 or 1 inch = 400 feet

This map was compiled from recorded documents and does not reflect an actual survey. The Brevard County Board of County Commissioners does not assume responsibility for errors or omissions hereon.

Produced by BoCC - GIS Date: 9/11/2024

SJRWMD FLUCCS WETLANDS

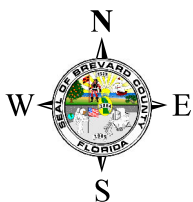
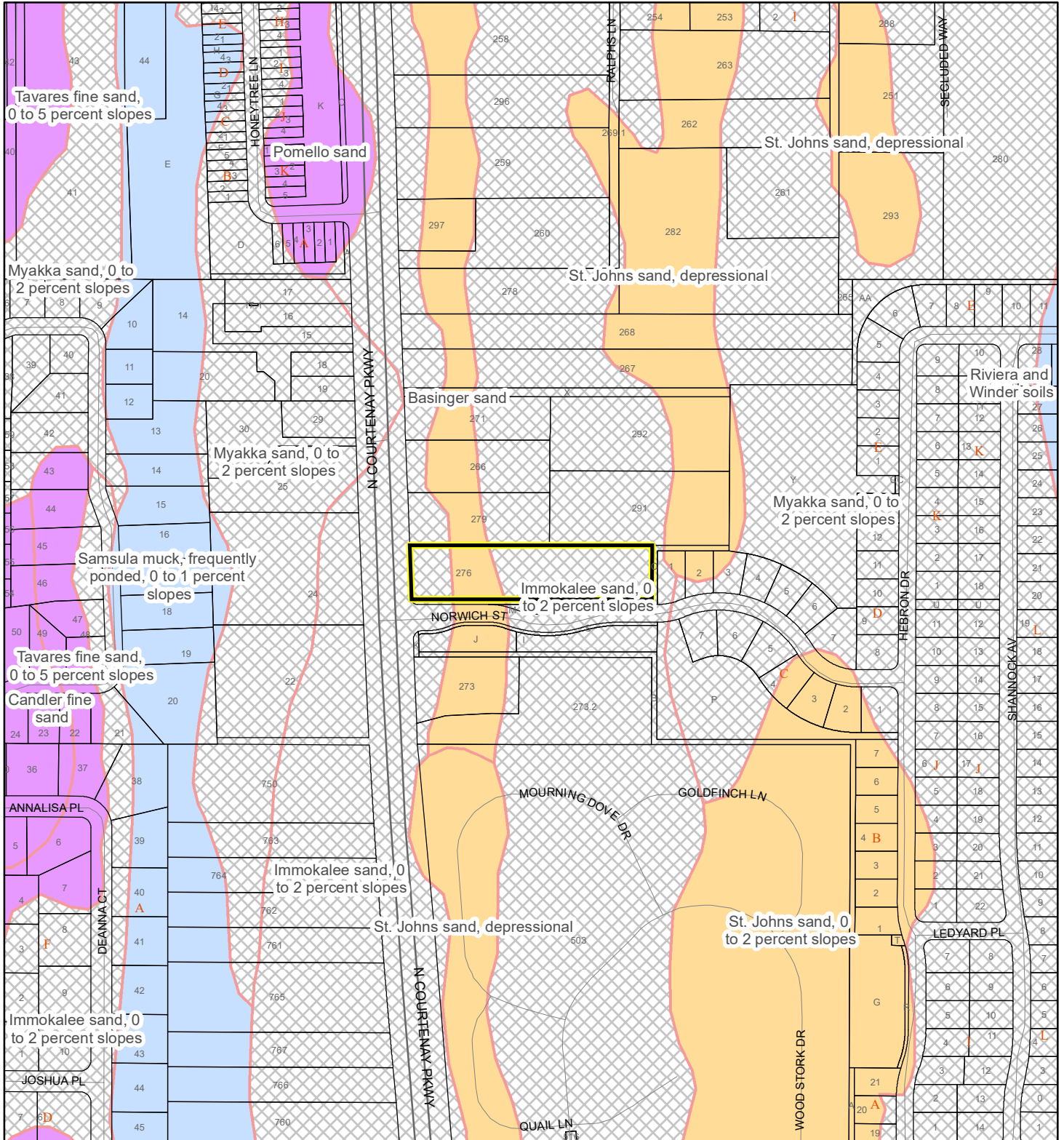
- Wetland Hardwood Forests - Series 6100
- Wetland Coniferous Forest - Series 6200
- Wetland Forested Mixed - Series 6300
- Vegetated Non-Forested Wetlands - Series 6400
- Non-Vegetated Wetland - Series 6500

Subject Property

Parcels

USDA SCSSS SOILS MAP

SCHWA INC
24Z00051



1:4,800 or 1 inch = 400 feet

This map was compiled from recorded documents and does not reflect an actual survey. The Brevard County Board of County Commissioners does not assume responsibility for errors or omissions hereon.

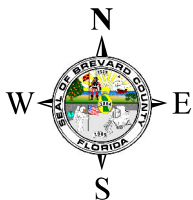
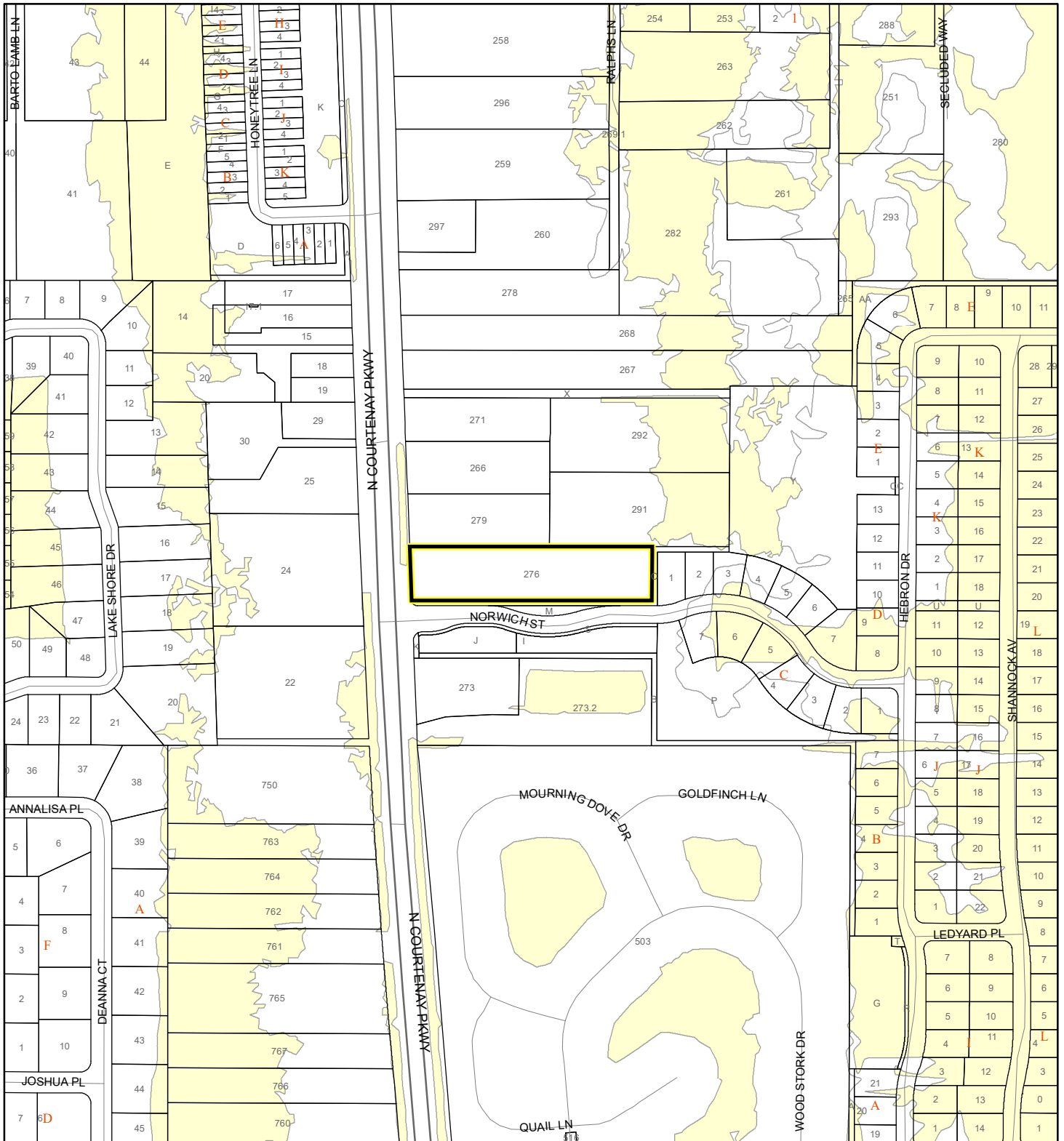
Produced by BoCC - GIS Date: 9/11/2024

USDA SCSSS Soils

- Aquifer and Hydric
- Aquifer
- Hydric
- None
- Subject Property
- Parcels

FEMA FLOOD ZONES MAP

SCHWA INC
24Z00051



1:4,800 or 1 inch = 400 feet

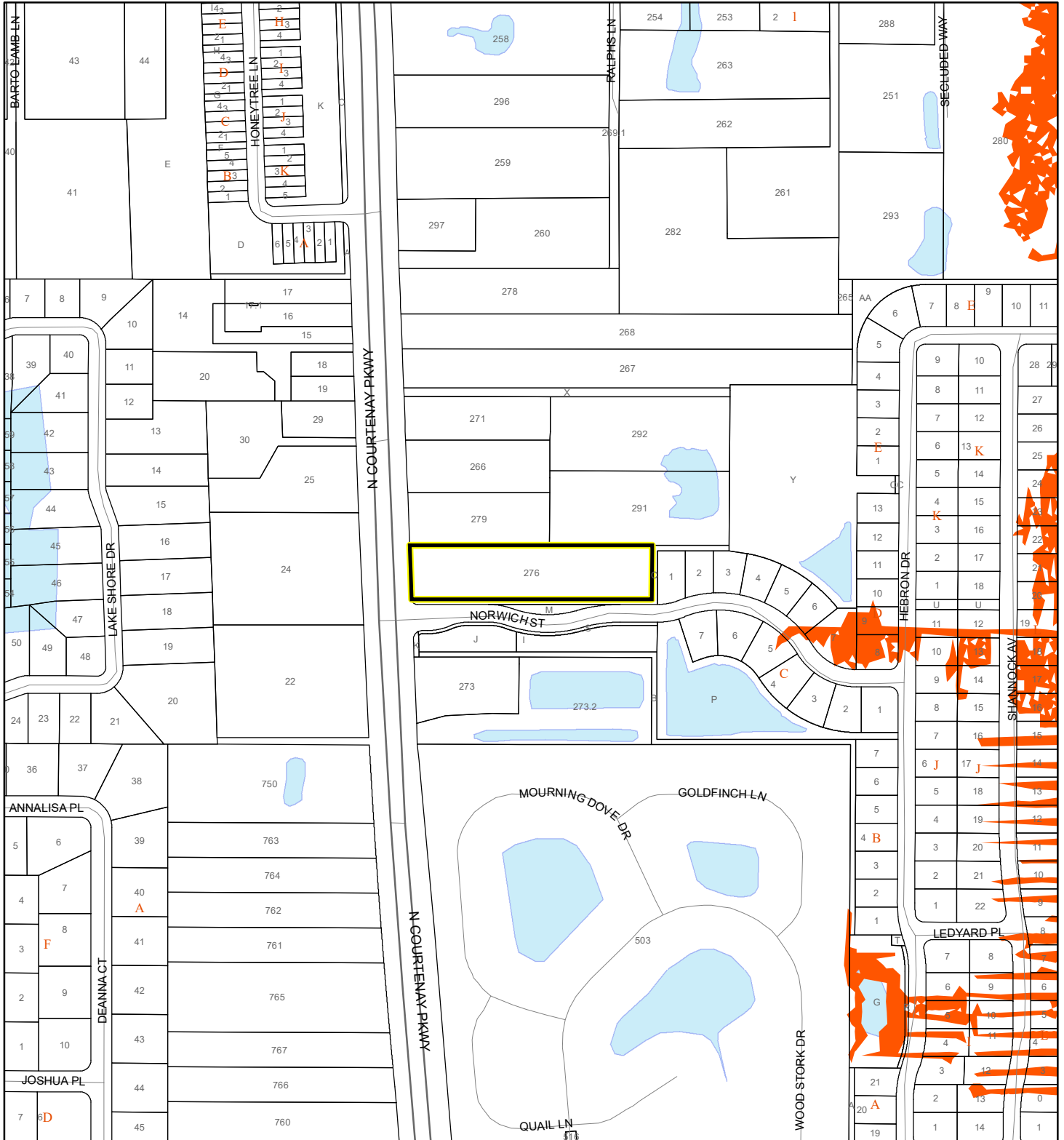
This map was compiled from recorded documents and does not reflect an actual survey. The Brevard County Board of County Commissioners does not assume responsibility for errors or omissions hereon.

Produced by BoCC - GIS Date: 9/11/2024

- FEMA Flood Zones**
- A
 - AE
 - AH
 - AO
 - Open Water
 - VE
 - X
 - Subject Property
 - Parcels

COASTAL HIGH HAZARD AREA MAP

SCHWA INC
24Z00051



1:4,800 or 1 inch = 400 feet


This map was compiled from recorded documents and does not reflect an actual survey. The Brevard County Board of County Commissioners does not assume responsibility for errors or omissions hereon.

Produced by BoCC - GIS Date: 9/11/2024

 Subject Property

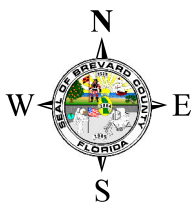
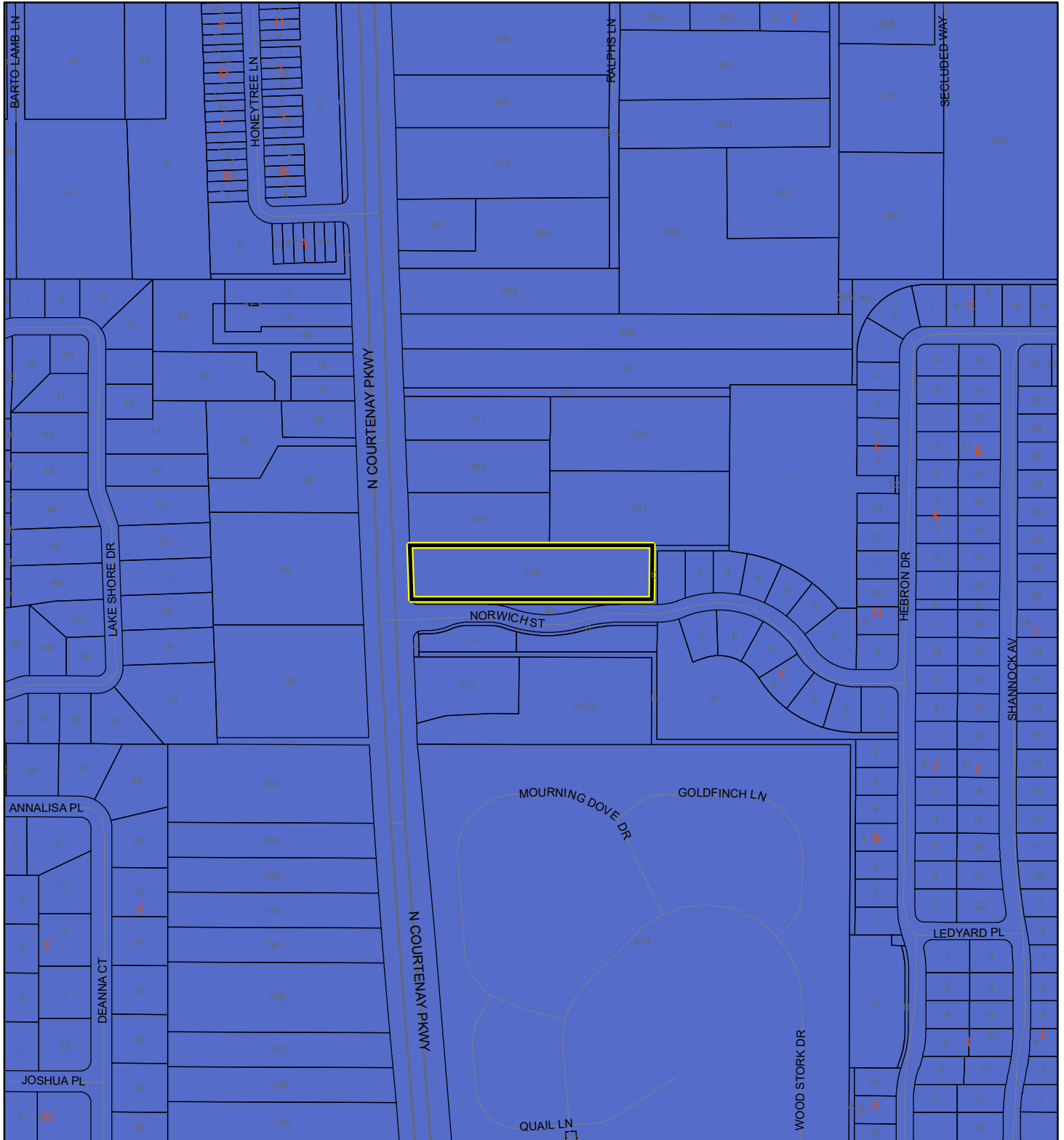
 Parcels

Coastal High Hazard Area

 SurgeZoneCat1

INDIAN RIVER LAGOON SEPTIC OVERLAY MAP

SCHWA INC
24Z00051



1:4,800 or 1 inch = 400 feet

 Subject Property

 Parcels

Septic Overlay

 40 Meters

 60 Meters

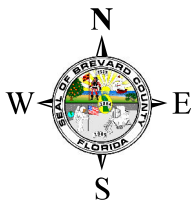
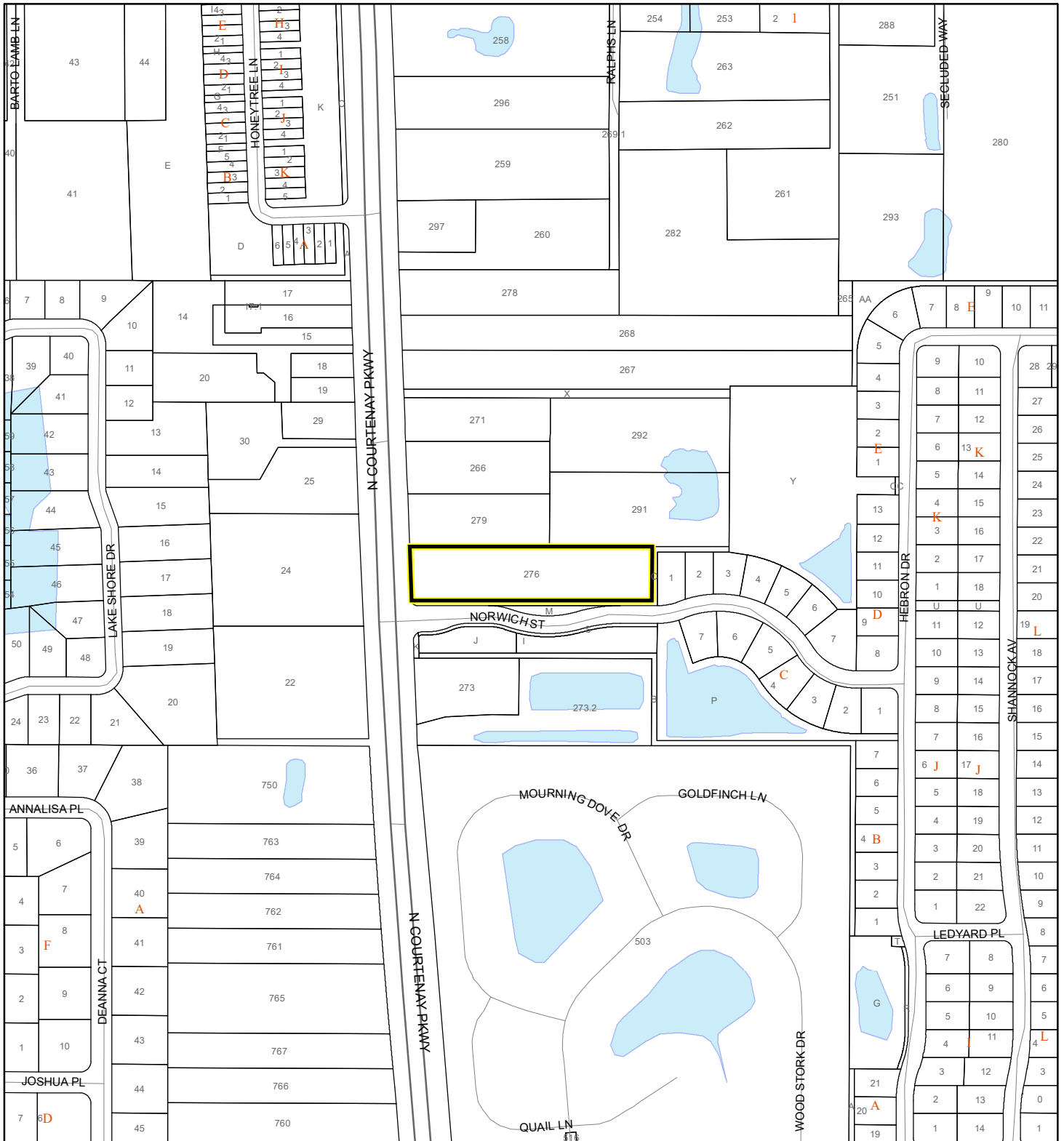
 All Distances

This map was compiled from recorded documents and does not reflect an actual survey. The Brevard County Board of County Commissioners does not assume responsibility for errors or omissions hereon.

Produced by BoCC - GIS Date: 9/11/2024

EAGLE NESTS MAP

SCHWA INC
24Z00051



1:4,800 or 1 inch = 400 feet

 Subject Property

 Parcels

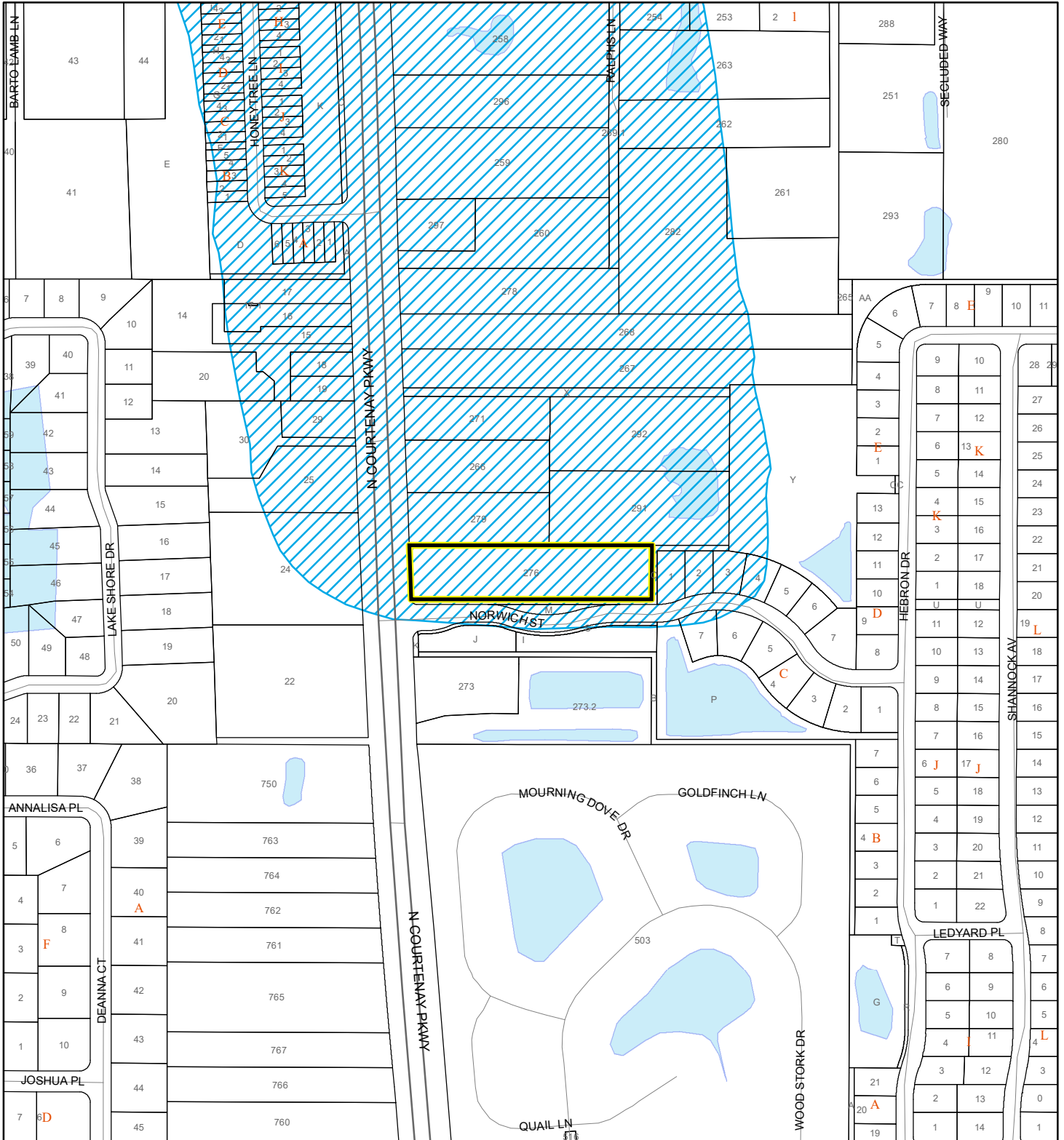
 Eagle Nests
FWS

This map was compiled from recorded documents and does not reflect an actual survey. The Brevard County Board of County Commissioners does not assume responsibility for errors or omissions hereon.

Produced by BoCC - GIS Date: 9/11/2024

SCRUB JAY OCCUPANCY MAP

SCHWA INC
24Z00051



N



1:4,800 or 1 inch = 400 feet

 Subject Property

 Parcels

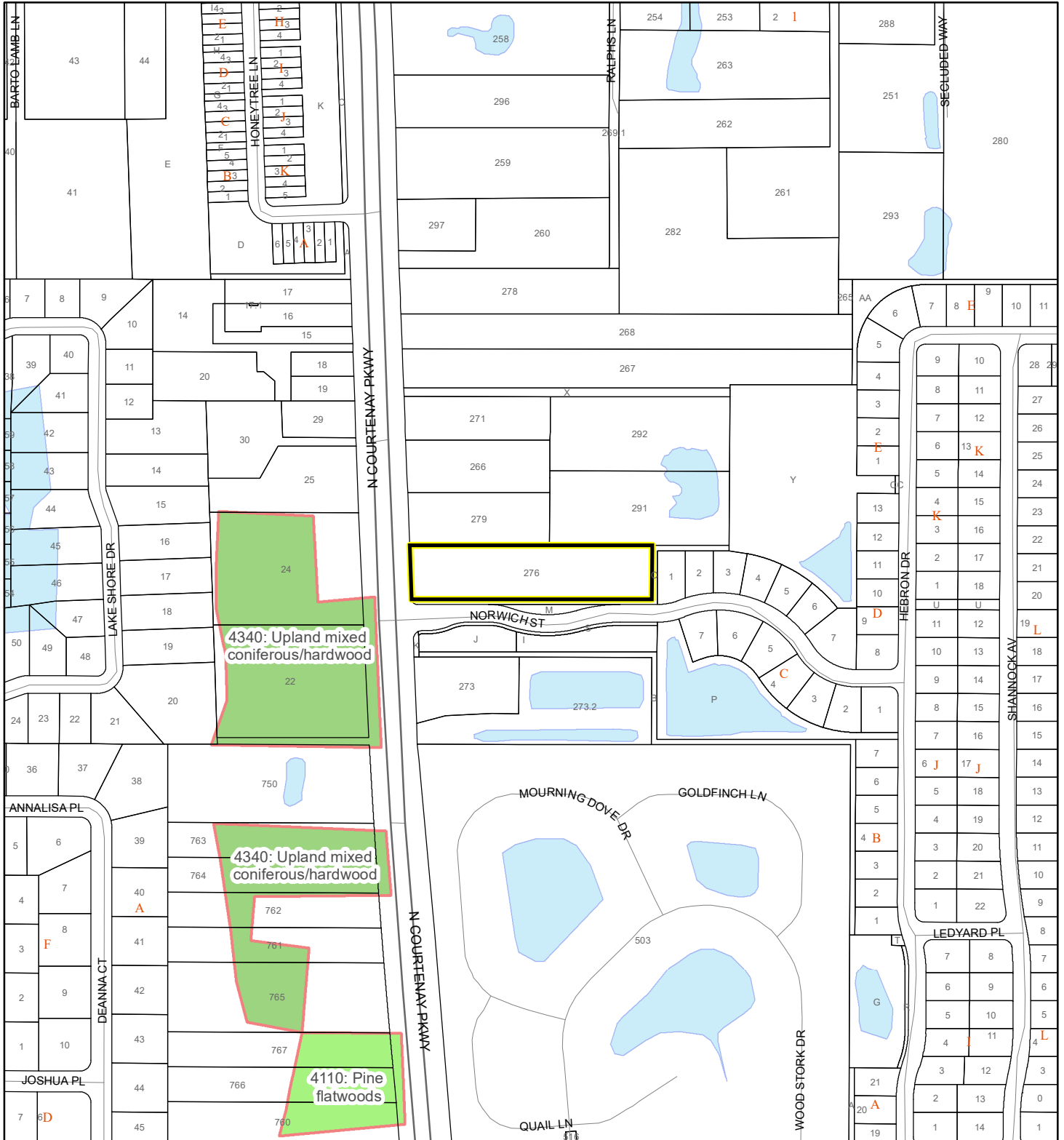
 Scrub Jay Occupancy

This map was compiled from recorded documents and does not reflect an actual survey. The Brevard County Board of County Commissioners does not assume responsibility for errors or omissions hereon.

Produced by BoCC - GIS Date: 9/11/2024

SJRWMD FLUCCS UPLAND FORESTS - 4000 Series MAP

SCHWA INC
24Z00051



1:4,800 or 1 inch = 400 feet

This map was compiled from recorded documents and does not reflect an actual survey. The Brevard County Board of County Commissioners does not assume responsibility for errors or omissions hereon.

Produced by BoCC - GIS Date: 9/11/2024

SJRWMD FLUCCS Upland Forests

- Upland Coniferous Forest - 4100 Series
- Upland Hardwood Forest - 4200 Series
- Upland Mixed Forest - 4300 Series
- Tree Plantations - 4400 Series

Subject Property

Parcels