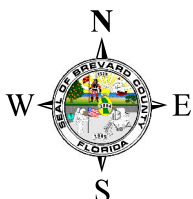
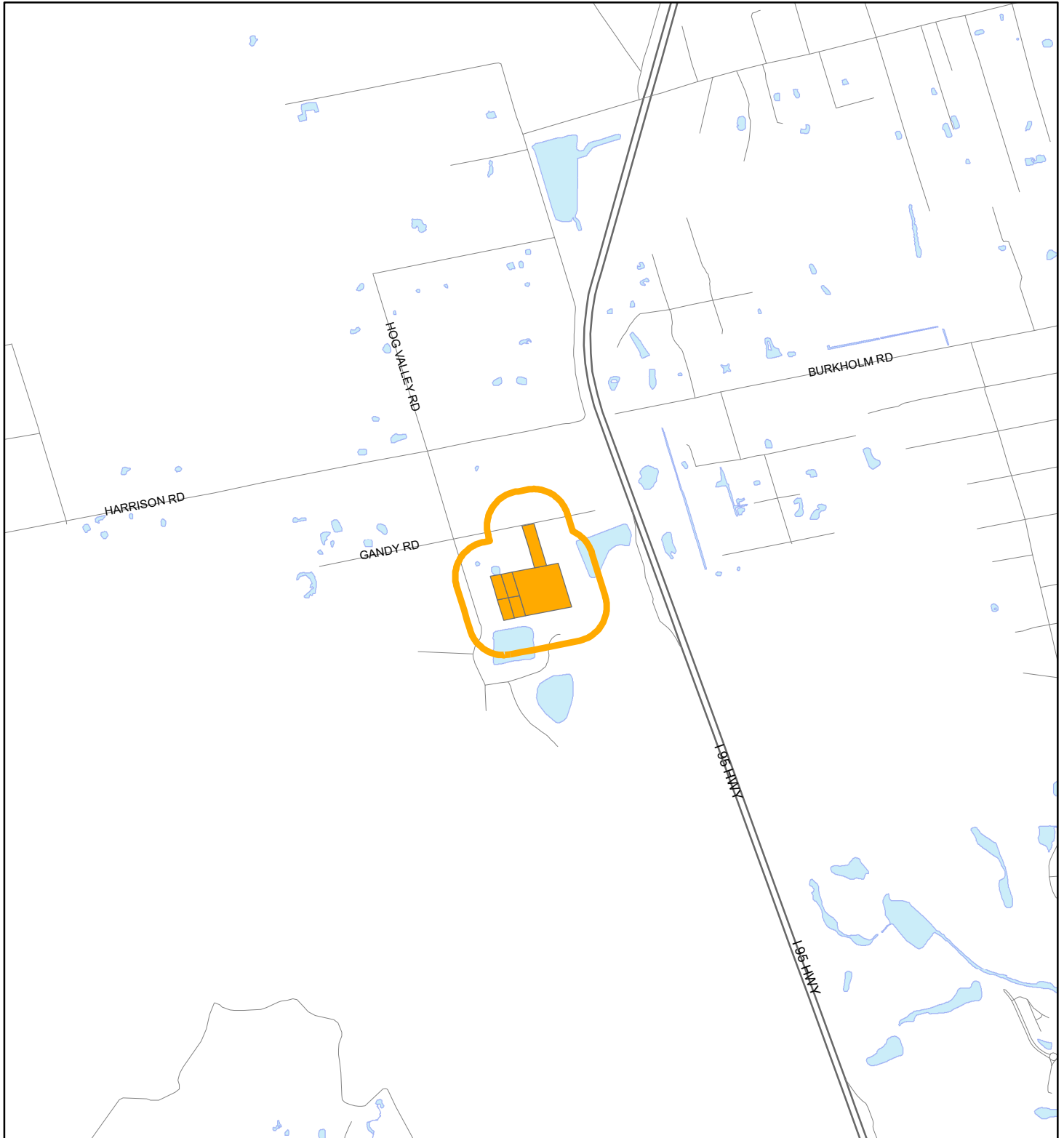


LOCATION MAP

RENINGER, AARON

24Z00005





1:24,000 or 1 inch = 2,000 feet

Buffer Distance: 500 feet

This map was compiled from recorded documents and does not reflect an actual survey. The Brevard County Board of County Commissioners does not assume responsibility for errors or omissions hereon.

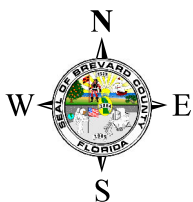
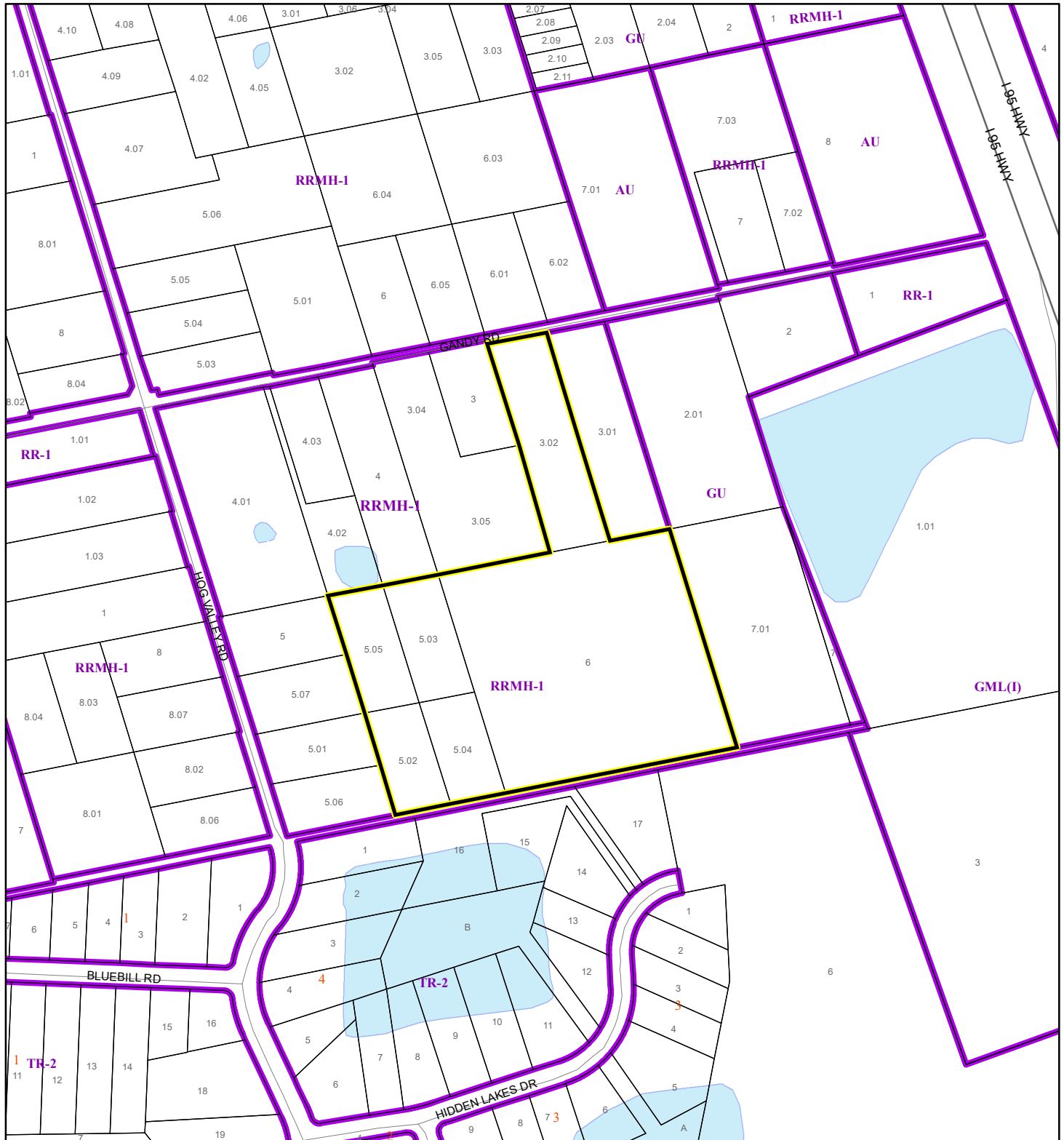
Produced by BoCC - GIS Date: 2/13/2024

 Buffer
 Subject Property

ZONING MAP

RENINGER, AARON


24Z00005



1:4,800 or 1 inch = 400 feet

This map was compiled from recorded documents and does not reflect an actual survey. The Brevard County Board of County Commissioners does not assume responsibility for errors or omissions hereon.

Produced by BoCC - GIS Date: 2/13/2024

 Subject Property

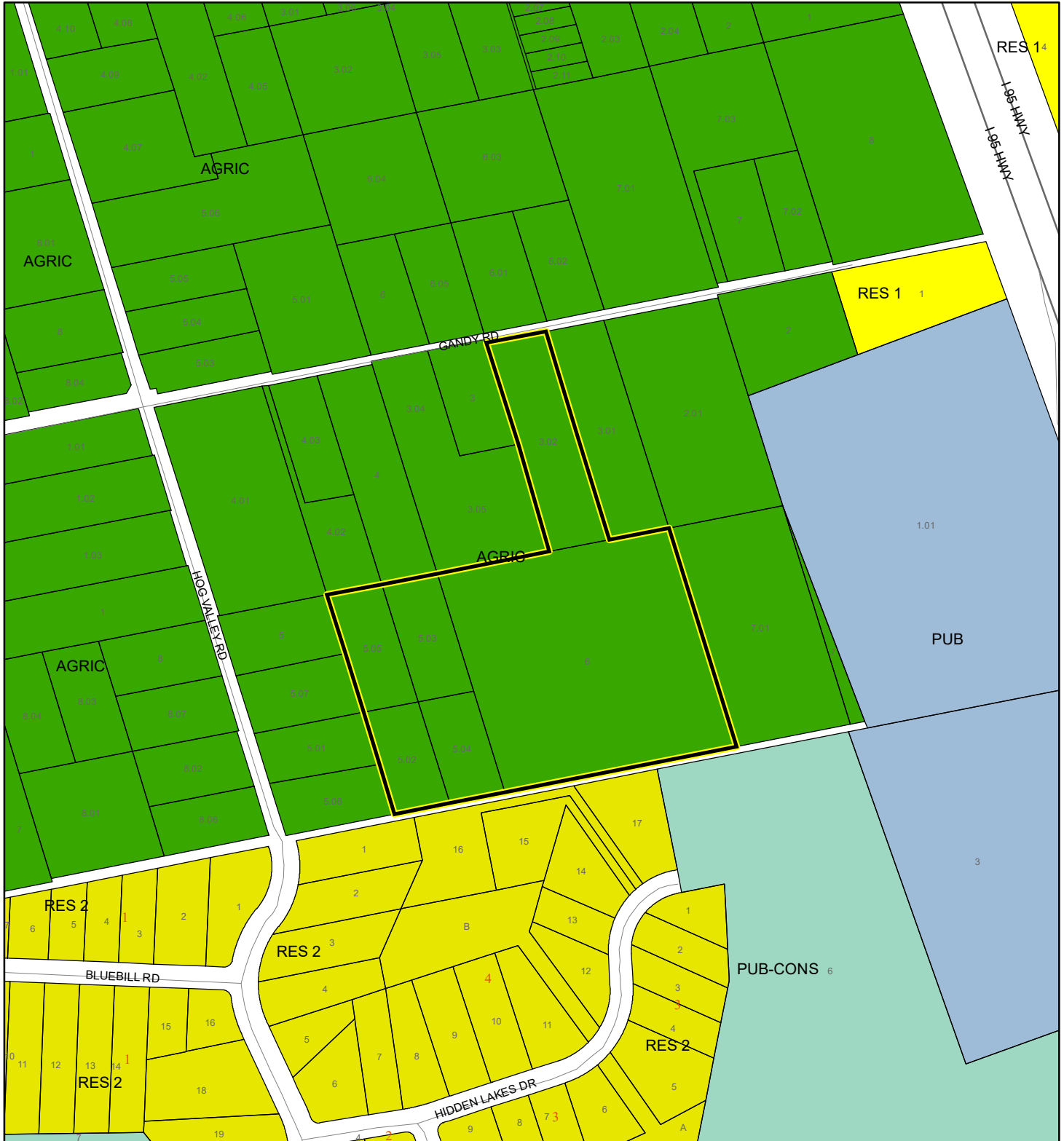
 Parcels

 Zoning

FUTURE LAND USE MAP

RENINGER, AARON

24Z00005



1:4,800 or 1 inch = 400 feet

Subject Property
Parcels

This map was compiled from recorded documents and does not reflect an actual survey. The Brevard County Board of County Commissioners does not assume responsibility for errors or omissions hereon.

Produced by BoCC - GIS Date: 2/13/2024

AERIAL MAP

RENINGER, AARON

24Z00005




1:3,600 or 1 inch = 300 feet

PHOTO YEAR: 2023

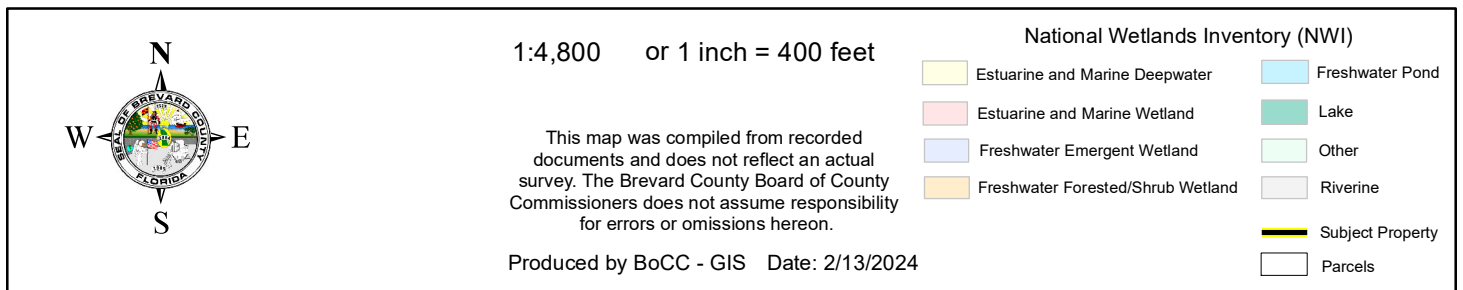
This map was compiled from recorded documents and does not reflect an actual survey. The Brevard County Board of County Commissioners does not assume responsibility for errors or omissions hereon.

Produced by BoCC - GIS Date: 2/13/2024

 Subject Property

 Parcels

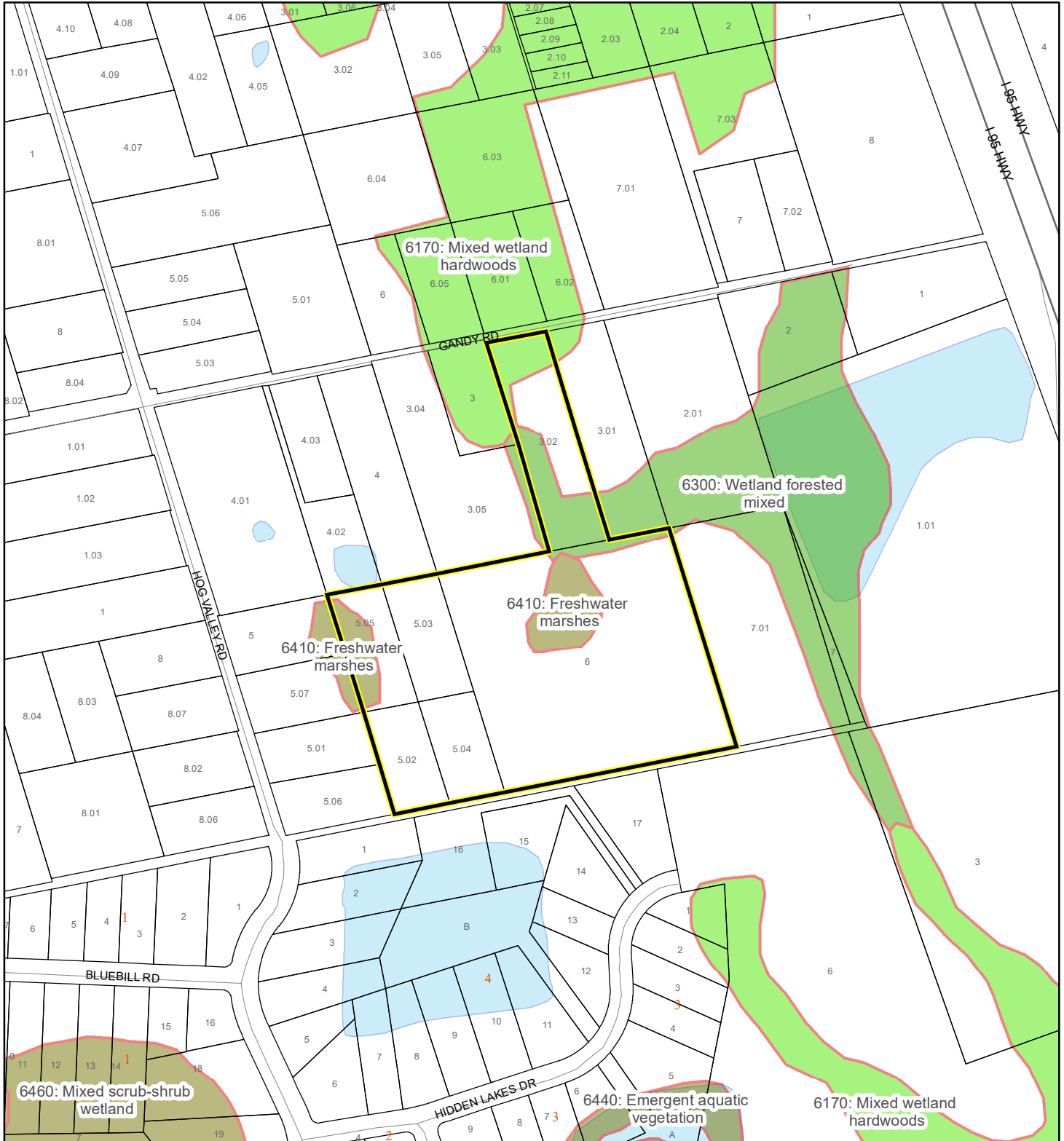
24Z00005



SJRWMD FLUCCS WETLANDS - 6000 Series MAP

RENINGER, AARON

24Z00005



1:4,800 or 1 inch = 400 feet

This map was compiled from recorded documents and does not reflect an actual survey. The Brevard County Board of County Commissioners does not assume responsibility for errors or omissions hereon.

Produced by BoCC - GIS Date: 2/13/2024

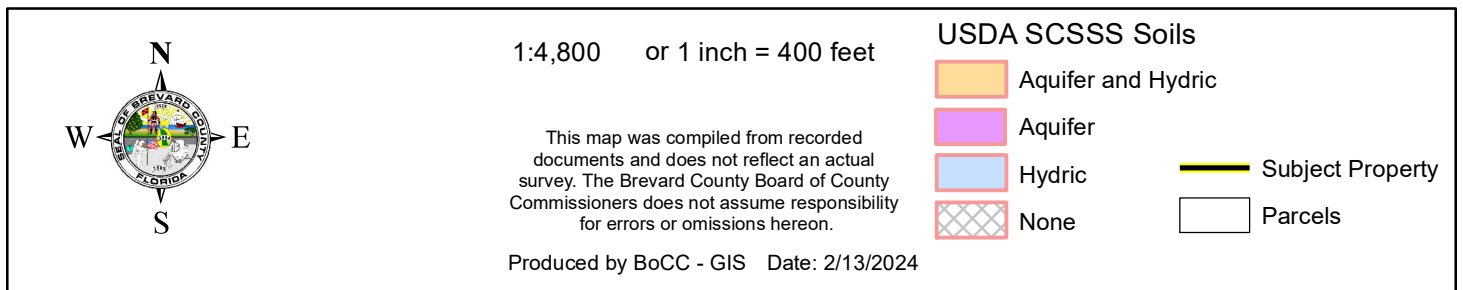
SJRWMD FLUCCS WETLANDS

- Wetland Hardwood Forests - Series 6100
- Wetland Coniferous Forest - Series 6200
- Wetland Forested Mixed - Series 6300
- Vegetated Non-Forested Wetlands - Series 6400
- Non-Vegetated Wetland - Series 6500

Subject Property

Parcels

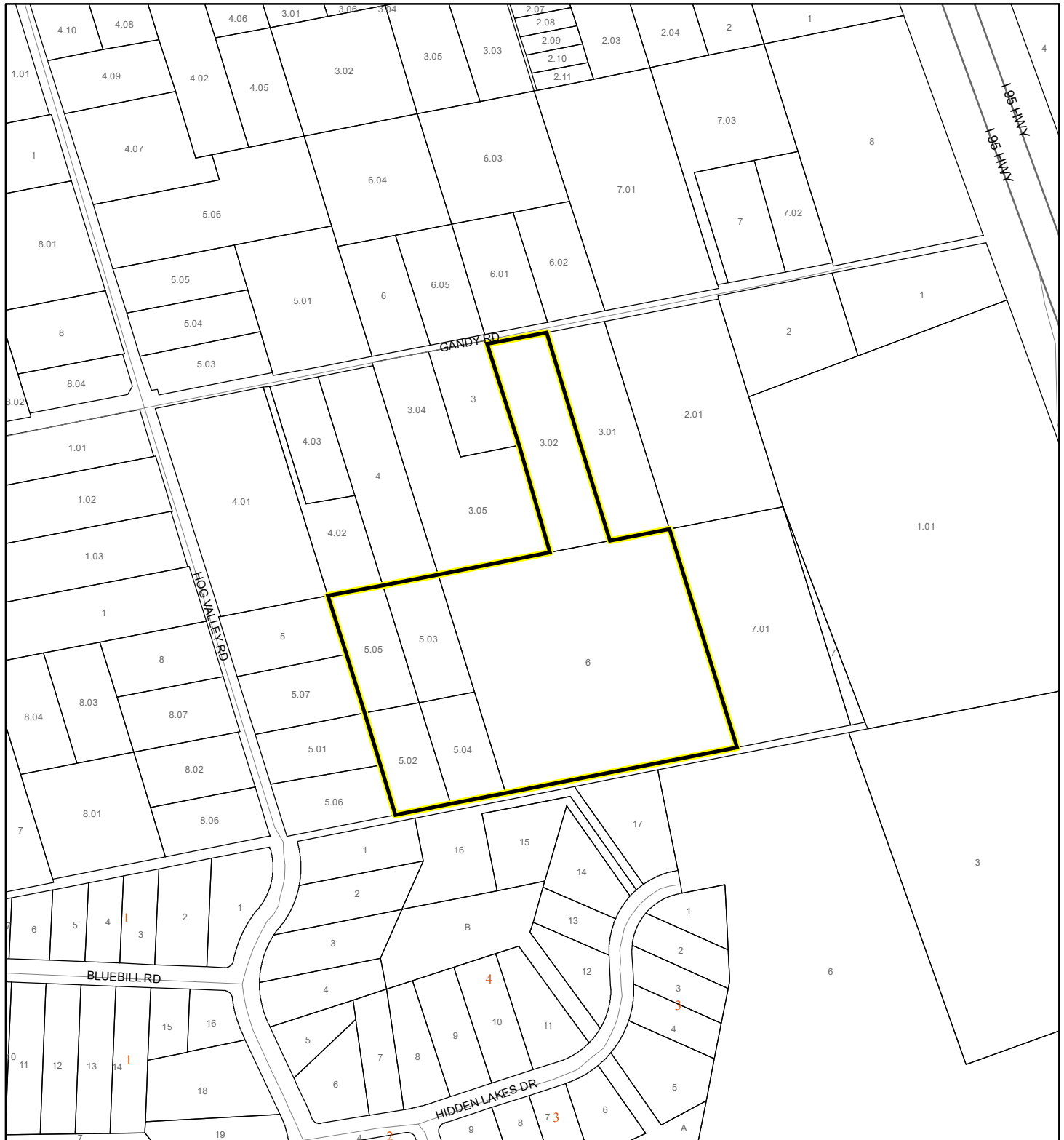
24Z00005



FEMA FLOOD ZONES MAP

RENINGER, AARON

24Z00005









1:4,800 or 1 inch = 400 feet

This map was compiled from recorded documents and does not reflect an actual survey. The Brevard County Board of County Commissioners does not assume responsibility for errors or omissions hereon.

Produced by BoCC - GIS Date: 2/13/2024

FEMA Flood Zones

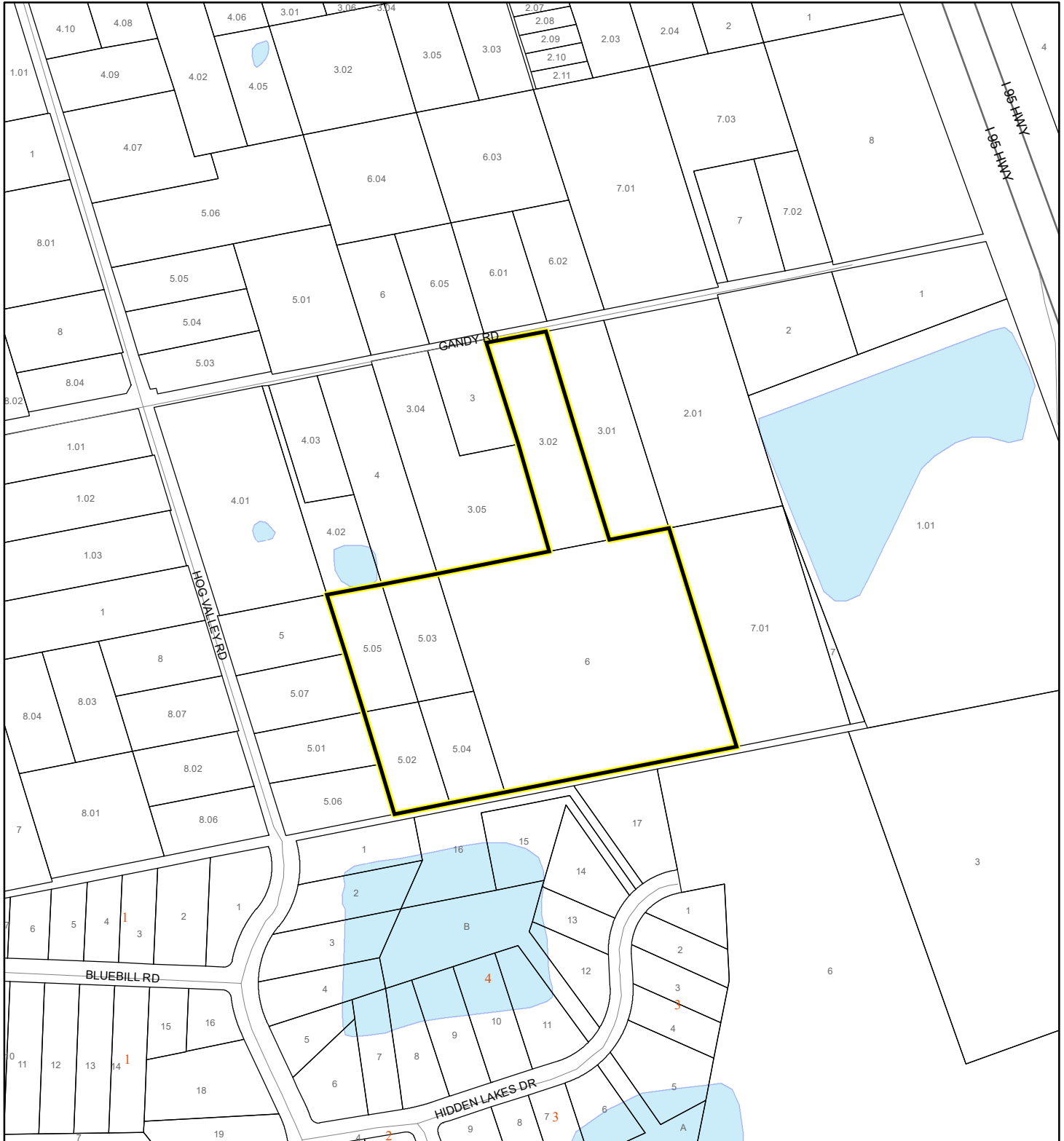
 A
  AO
  X
 AE
  Open Water
 AH
  VE

 Subject Property  Parcels

COASTAL HIGH HAZARD AREA MAP

RENINGER, AARON

24Z00005



1:4,800 or 1 inch = 400 feet


This map was compiled from recorded documents and does not reflect an actual survey. The Brevard County Board of County Commissioners does not assume responsibility for errors or omissions hereon.

Produced by BoCC - GIS Date: 2/13/2024

 Subject Property

 Parcels

Coastal High Hazard Area

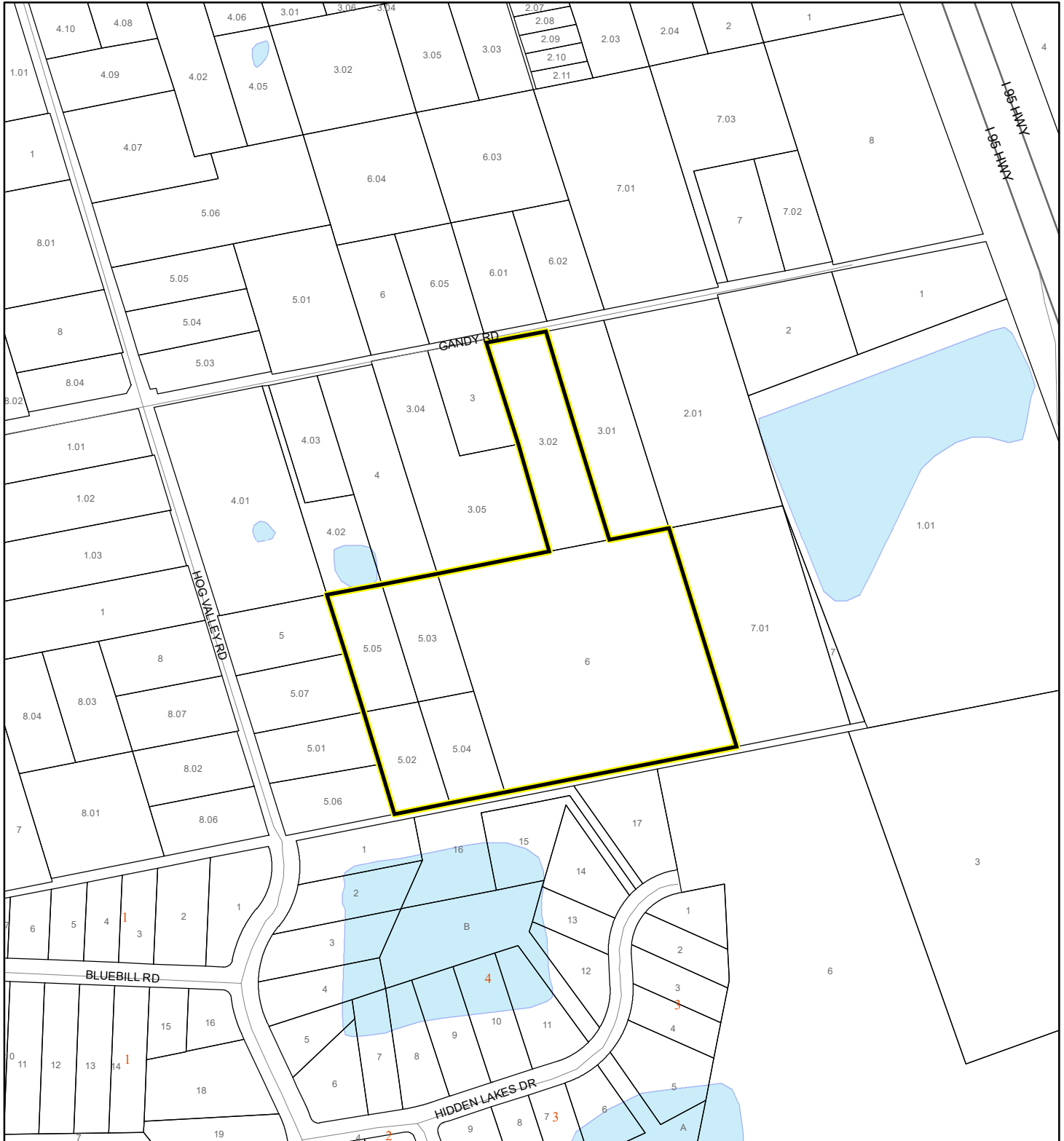
 SurgeZoneCat1

 All Distances

EAGLE NESTS MAP

RENINGER, AARON

24Z00005



1:4,800 or 1 inch = 400 feet

This map was compiled from recorded documents and does not reflect an actual survey. The Brevard County Board of County Commissioners does not assume responsibility for errors or omissions hereon.

Produced by BoCC - GIS Date: 2/13/2024

 Subject Property

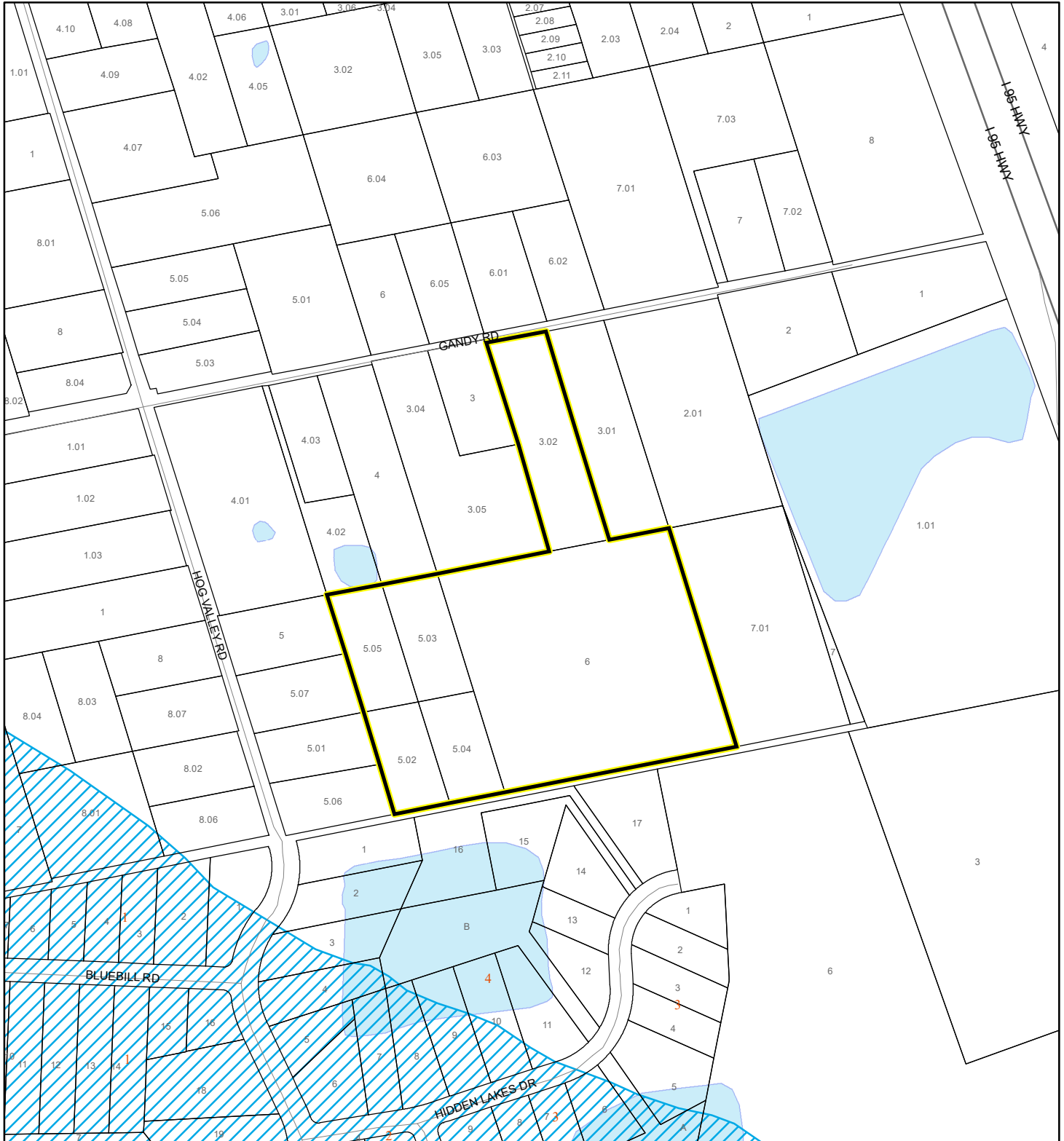
 Parcels

 Eagle Nests
FWS

SCRUB JAY OCCUPANCY MAP

RENINGER, AARON




24Z00005



1:4,800 or 1 inch = 400 feet

This map was compiled from recorded documents and does not reflect an actual survey. The Brevard County Board of County Commissioners does not assume responsibility for errors or omissions hereon.

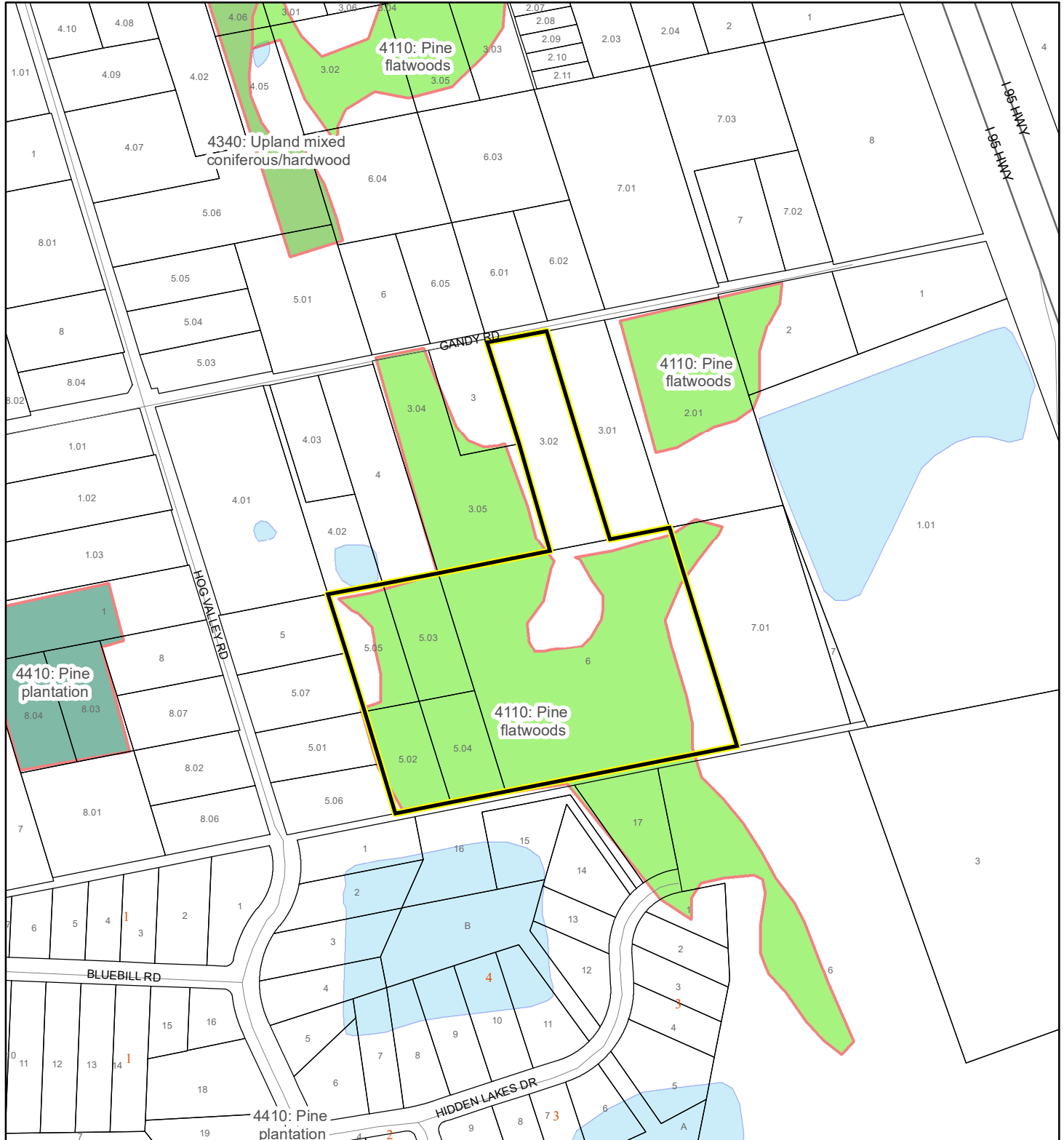
Produced by BoCC - GIS Date: 2/13/2024

-  Subject Property
-  Parcels
-  Scrub Jay Occupancy

SJRWMD FLUCCS UPLAND FORESTS - 4000 Series MAP

RENINGER, AARON

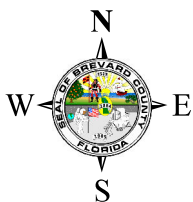
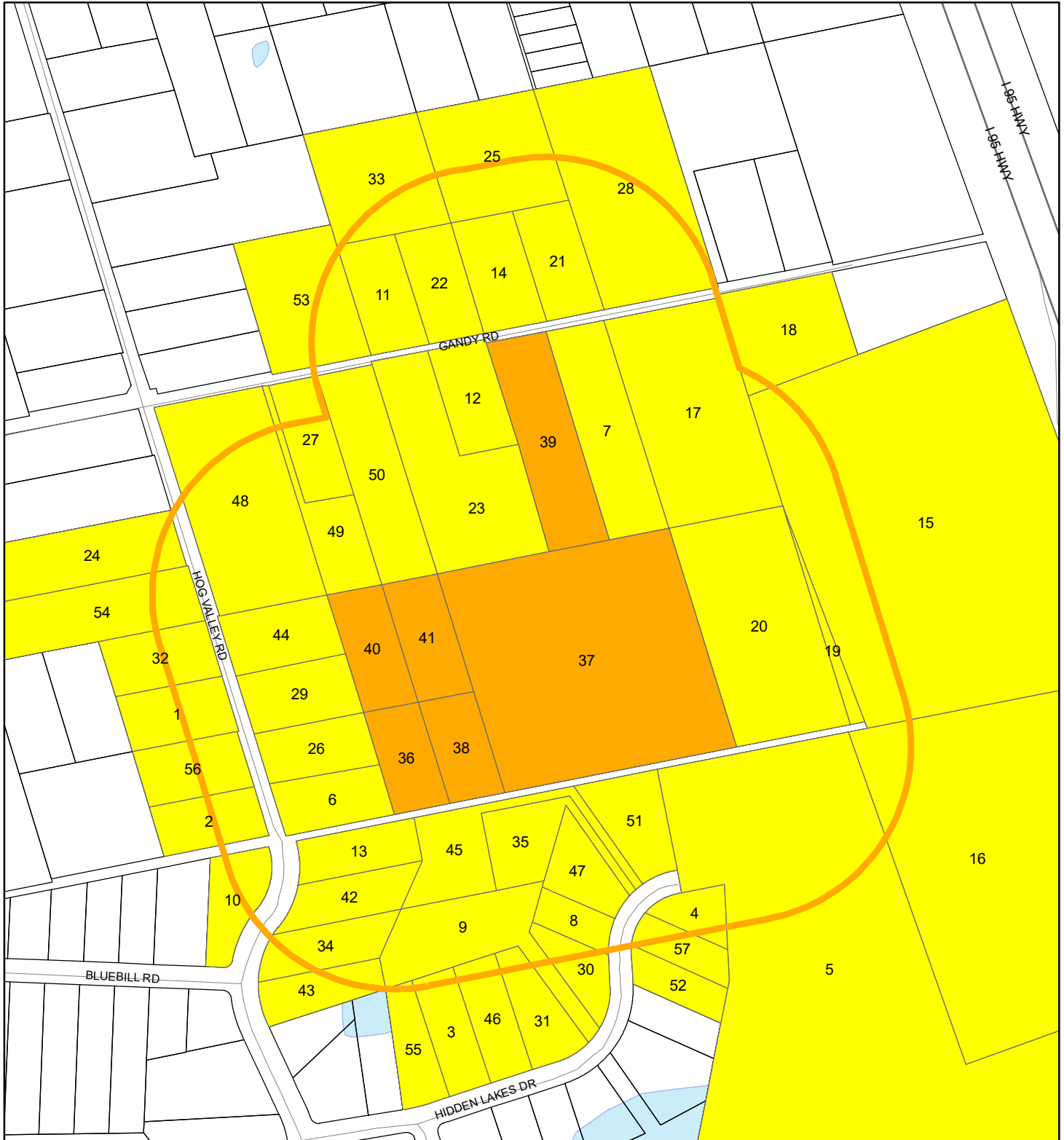
24Z00005



RADIUS MAP

RENINGER, AARON

24Z00005



1:4,800 or 1 inch = 400 feet

Buffer Distance: 500 feet

This map was compiled from recorded documents and does not reflect an actual survey. The Brevard County Board of County Commissioners does not assume responsibility for errors or omissions hereon.

Produced by BoCC - GIS Date: 2/13/2024

— Buffer

 Subject Property

☐ Notify Property

Parcels