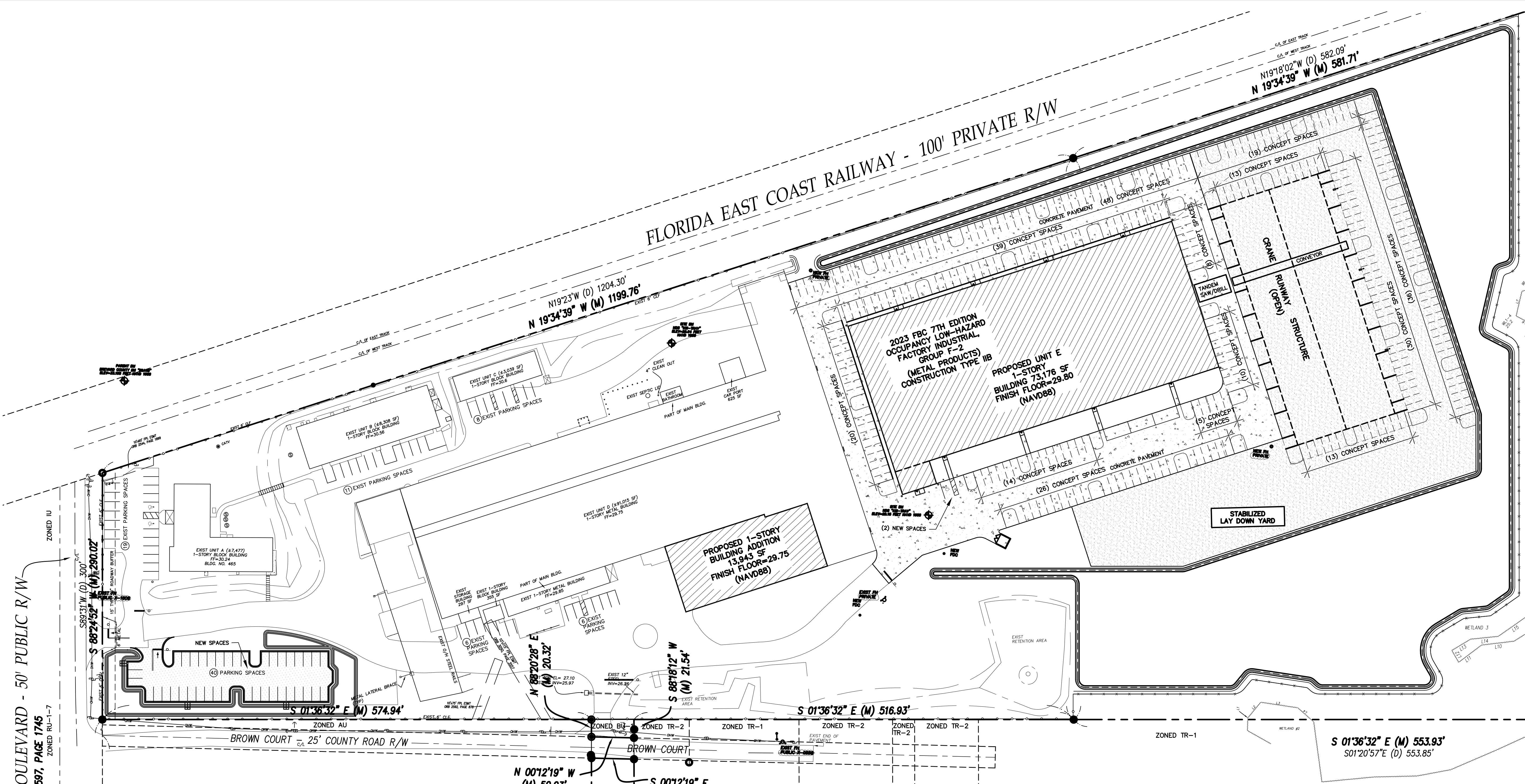
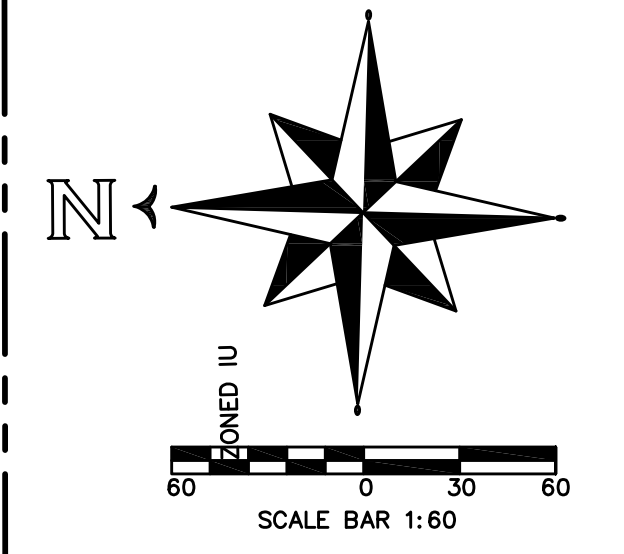


CANAVERAL GROVES BOULEVARD - 50' PUBLIC R/W
 ORB 4597, PAGE 1745
 ZONED RU-1-7

FLORIDA EAST COAST RAILWAY - 100' PRIVATE R/W



CONCEPTUAL PARKING LAYOUT	
• CODE REQ. SPACES	= 373
• EXISTING SPACES	= 50 (PAVED)
• NEW SPACES	= 42 (PAVED)
• CONCEPTUAL SPACES	= 170 (PAVED)
• CONCEPTUAL SPACES	= 111 (29.8% STABILIZED)
• TOTAL	= 373 (CODE REQUIRED)

NOTES:
 1. THIS PLAN IS INTENDED TO SHOW CODE REQUIRED PARKING COUNT ONLY.
 2. CONCEPTUAL SPACES SHOWN ARE 9'x20'.
 3. ALL DRIVE AISLES ARE A MINIMUM 24' WIDE.

DIGITAL SIGNATURE:
 THIS ITEM HAS BEEN ELECTRONICALLY SIGNED AND SEALED BY STEVEN W. MONROE, P.E. #61778 ON THE DATE APPEARING IN THE DIGITAL SEAL USING A SHA AUTHENTICATION CODE.
 PRINTED COPIES OF THIS DOCUMENT ARE NOT CONSIDERED SIGNED AND SEALED. THE SHA AUTHENTICATION CODE MUST BE VERIFIED ON ANY ELECTRONIC COPIES.

MONROE ENGINEERING, INC.
 CIVIL ENGINEERING / STRUCTURAL ENGINEERING
 P.O. BOX 121094, WEST MELBOURNE, FL. 32912
 PE #61778 PHONE: 321-544-8177 CA #32271

PROJECT: MET-CON			
SHEET TITLE: EXHIBIT A -- PARKING REDUCTION REQUEST			
ISSUE DATE: 8-6-24	DRAWN BY: SM	CHECK BY: SM	APPR. BY: SM
REV. BY	DATE		
			SCALE: 1:10
			JOB NO. 21-023
			SHEET: 1 OF 1
			EXHIBIT