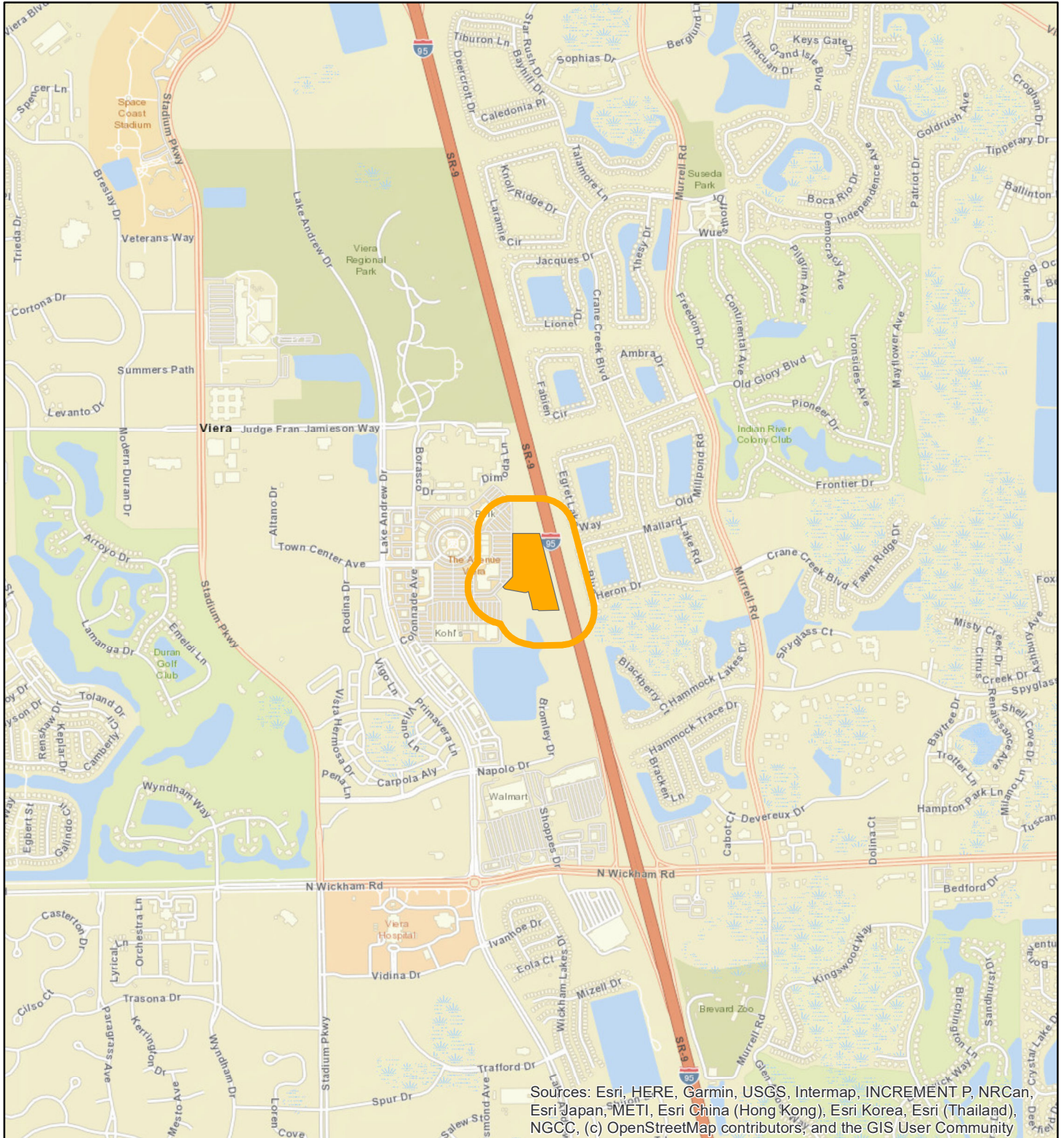


# LOCATION MAP

THE VIERA COMPANY

25Z00032





1:24,000 or 1 inch = 2,000 feet

Buffer Distance: 500 feet

This map was compiled from recorded documents and does not reflect an actual survey. The Brevard County Board of County Commissioners does not assume responsibility for errors or omissions hereon.

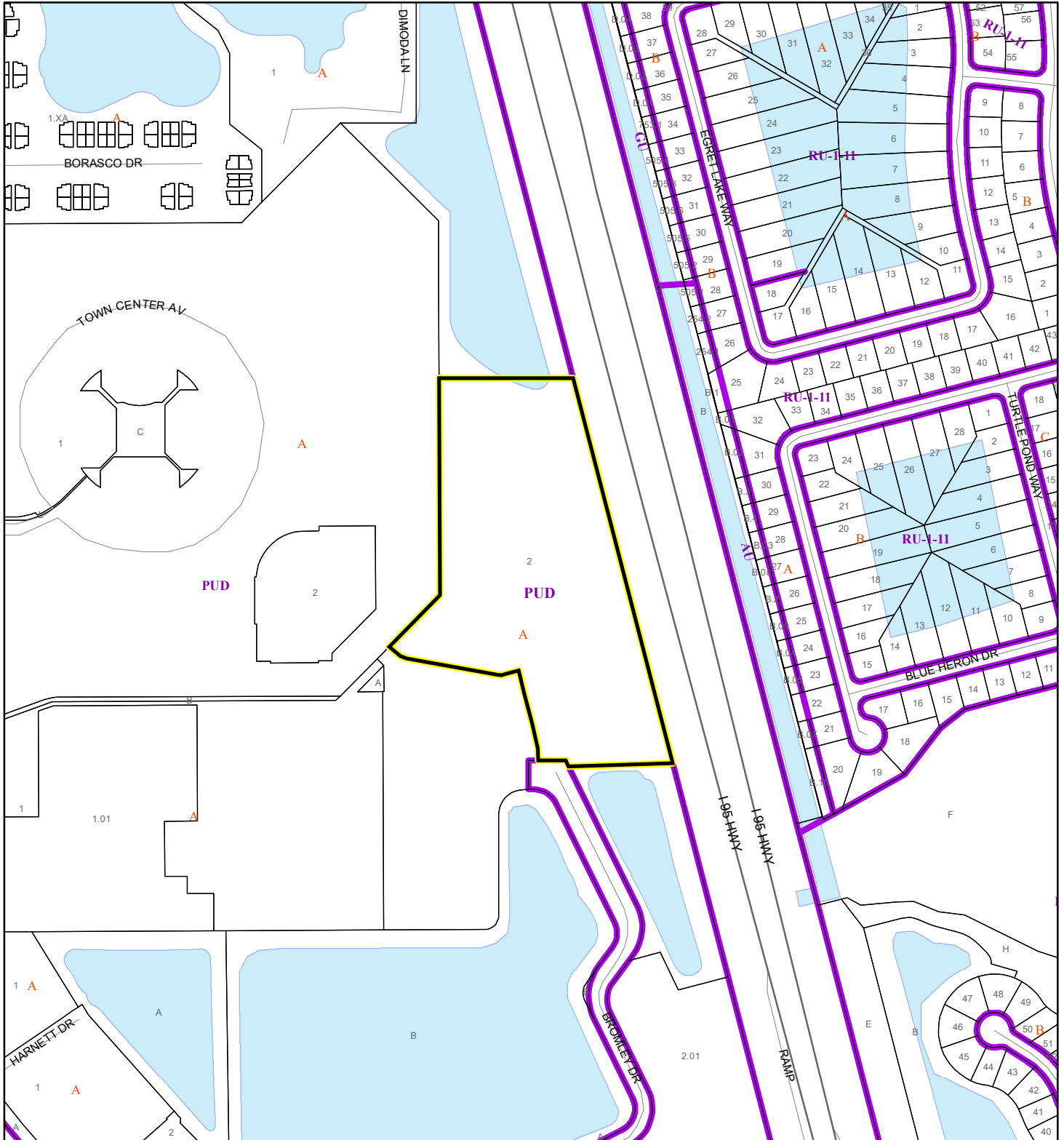
Produced by BoCC - GIS Date: 7/30/2025

 Buffer  
 Subject Property

# ZONING MAP

THE VIERA COMPANY


25Z00032



1:4,800 or 1 inch = 400 feet

This map was compiled from recorded documents and does not reflect an actual survey. The Brevard County Board of County Commissioners does not assume responsibility for errors or omissions hereon.

Produced by BoCC - GIS Date: 7/30/2025

 Subject Property

 Parcels

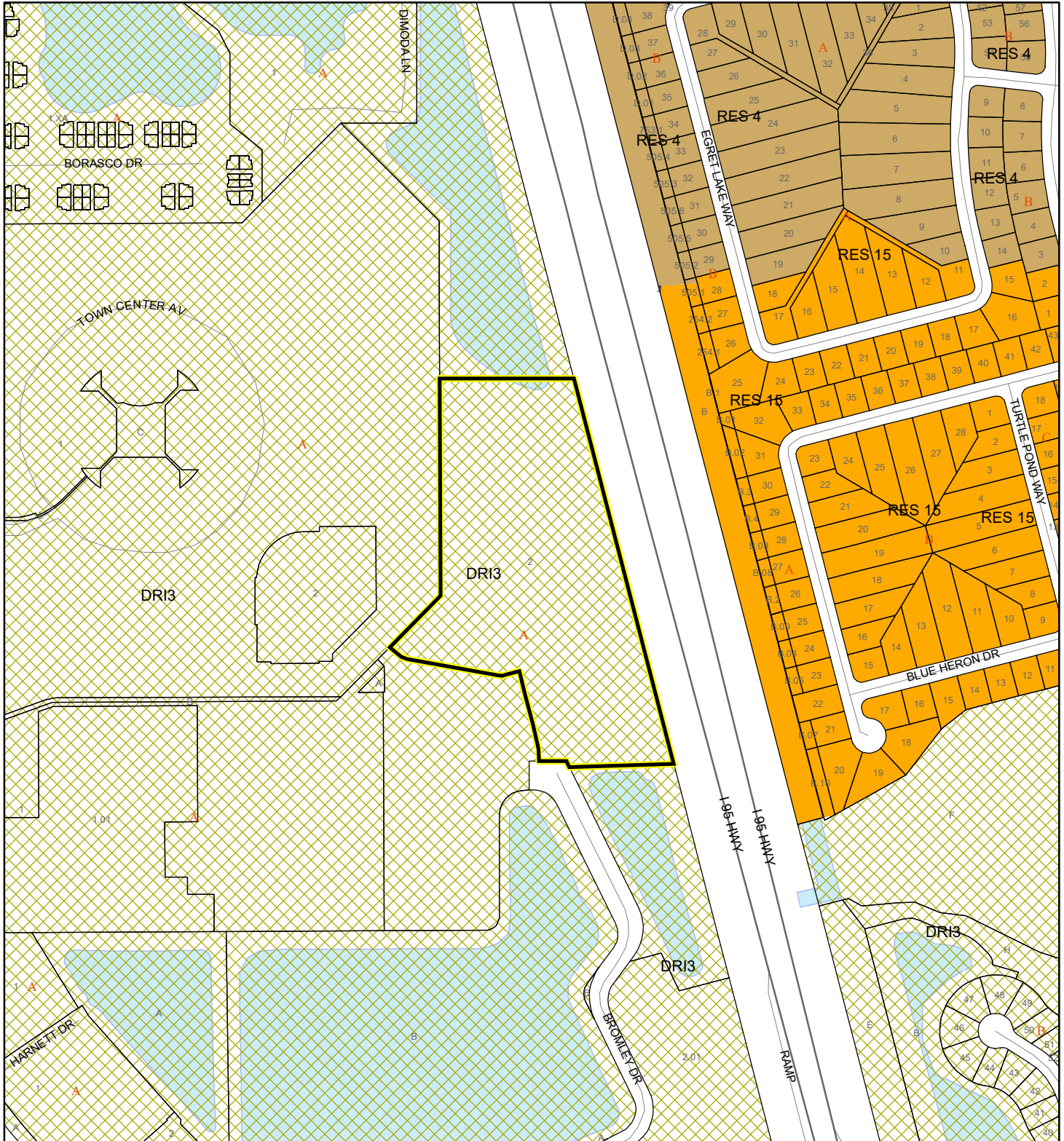
 Zoning





# FUTURE LAND USE MAP

THE VIERA COMPANY

25Z00032



1:4,800 or 1 inch = 400 feet

 Subject Property  
 Parcels

This map was compiled from recorded documents and does not reflect an actual survey. The Brevard County Board of County Commissioners does not assume responsibility for errors or omissions hereon.

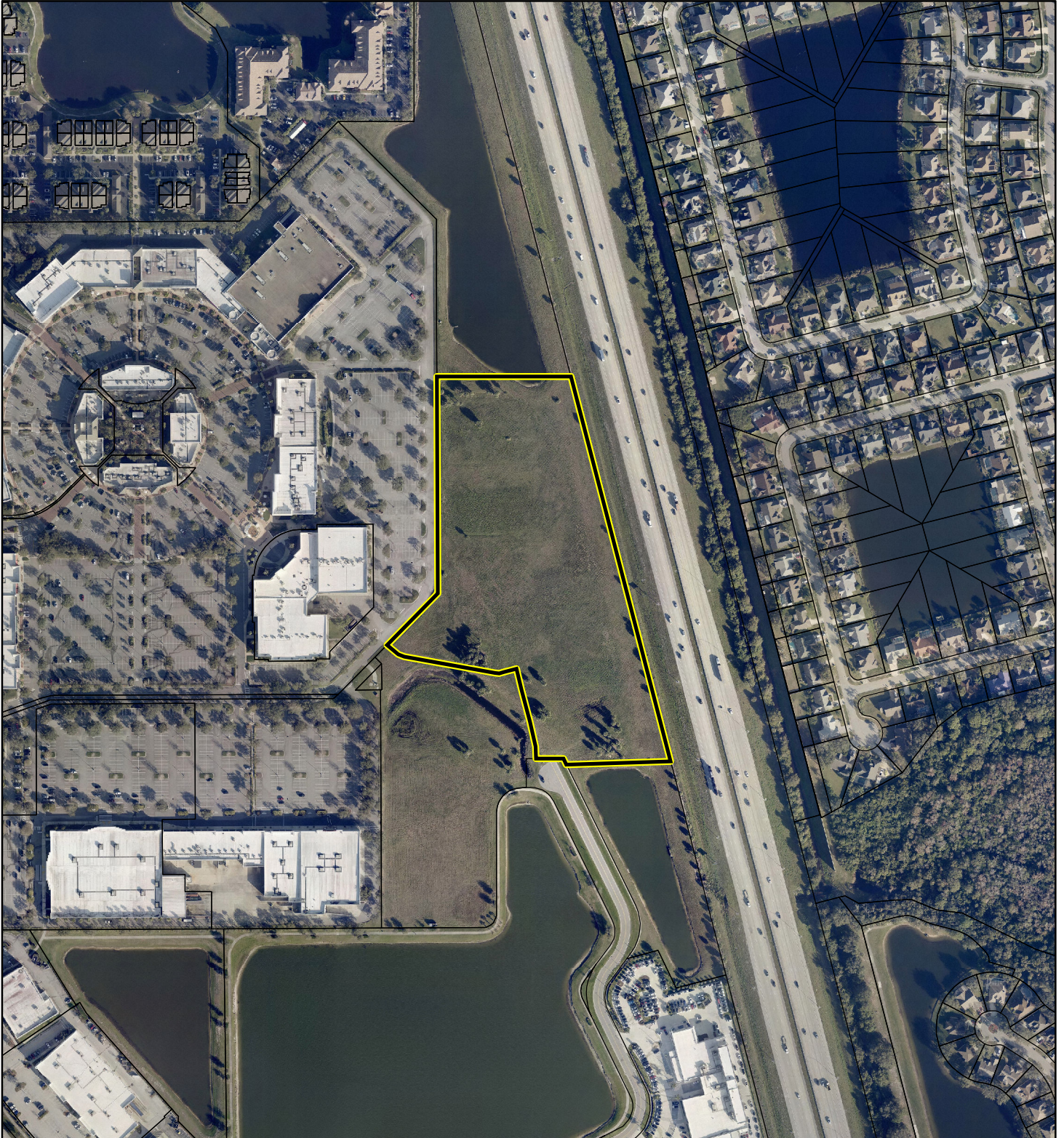
Produced by BoCC - GIS Date: 7/30/2025



# AERIAL MAP

THE VIERA COMPANY

25Z00032



1:4,800 or 1 inch = 400 feet

PHOTO YEAR: 2025

This map was compiled from recorded documents and does not reflect an actual survey. The Brevard County Board of County Commissioners does not assume responsibility for errors or omissions hereon.

Produced by BoCC - GIS Date: 7/30/2025

 Subject Property

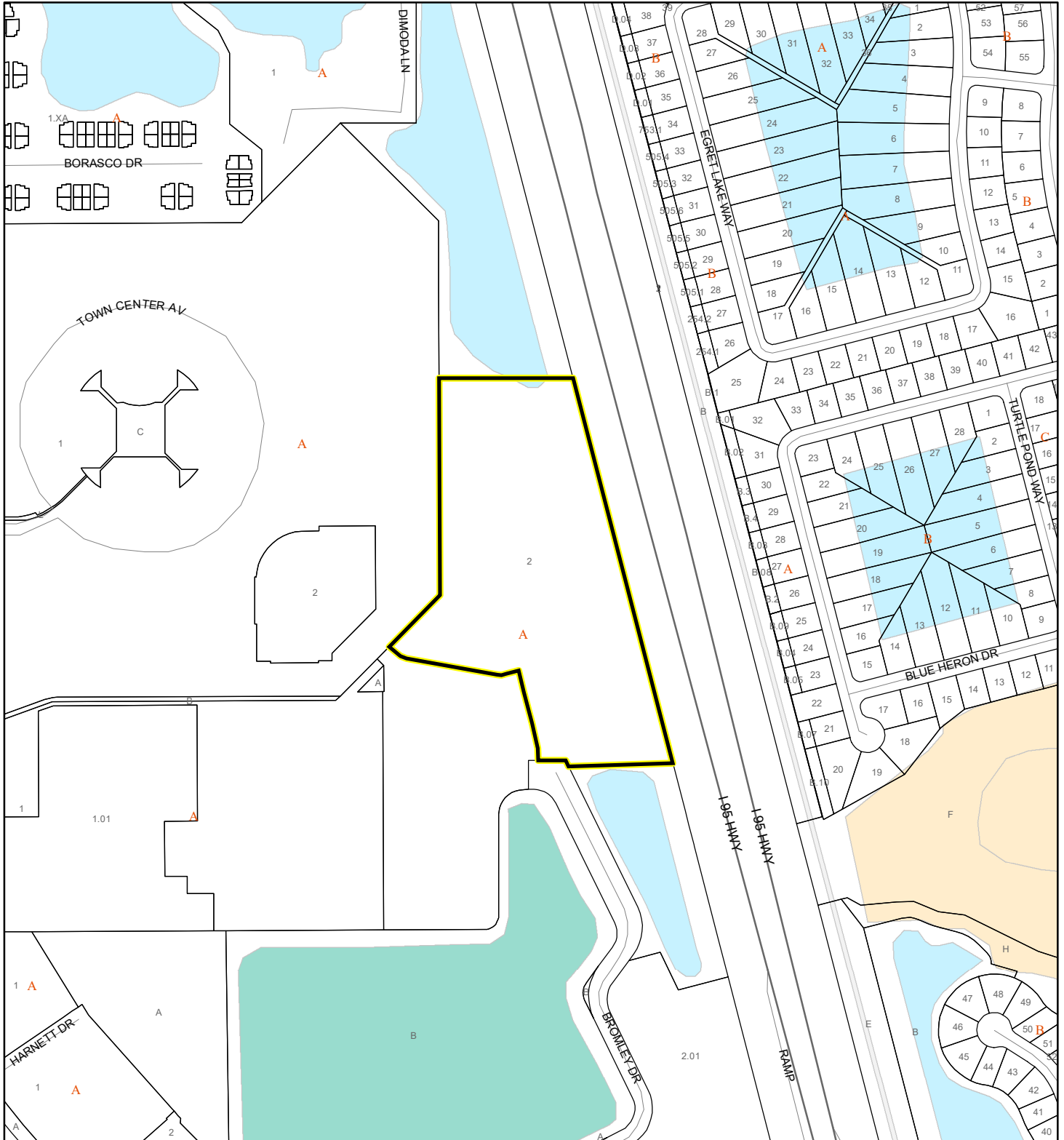
 Parcels



# NWI WETLANDS MAP

THE VIERA COMPANY

25Z00032













1:4,800 or 1 inch = 400 feet

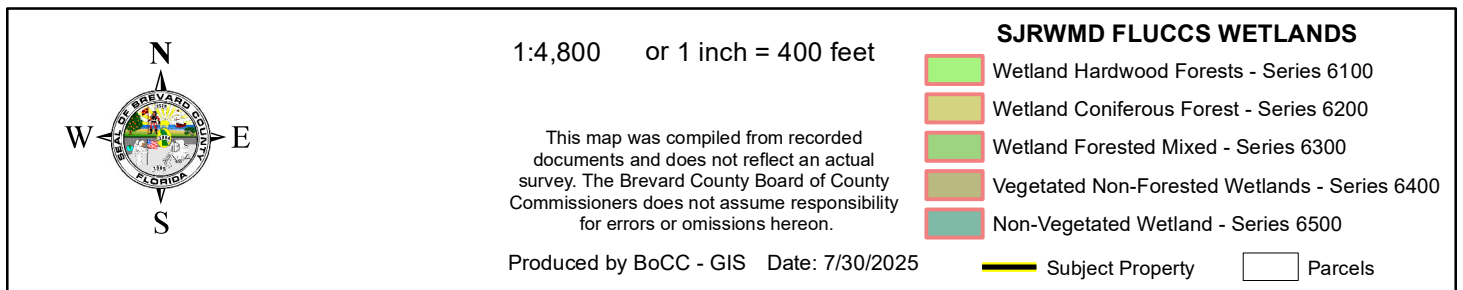
This map was compiled from recorded documents and does not reflect an actual survey. The Brevard County Board of County Commissioners does not assume responsibility for errors or omissions hereon.

Produced by BoCC - GIS Date: 7/30/2025

## National Wetlands Inventory (NWI)

 Estuarine and Marine Deepwater	 Freshwater Pond
 Estuarine and Marine Wetland	 Lake
 Freshwater Emergent Wetland	 Other
 Freshwater Forested/Shrub Wetland	 Riverine
	 Subject Property
	 Parcels

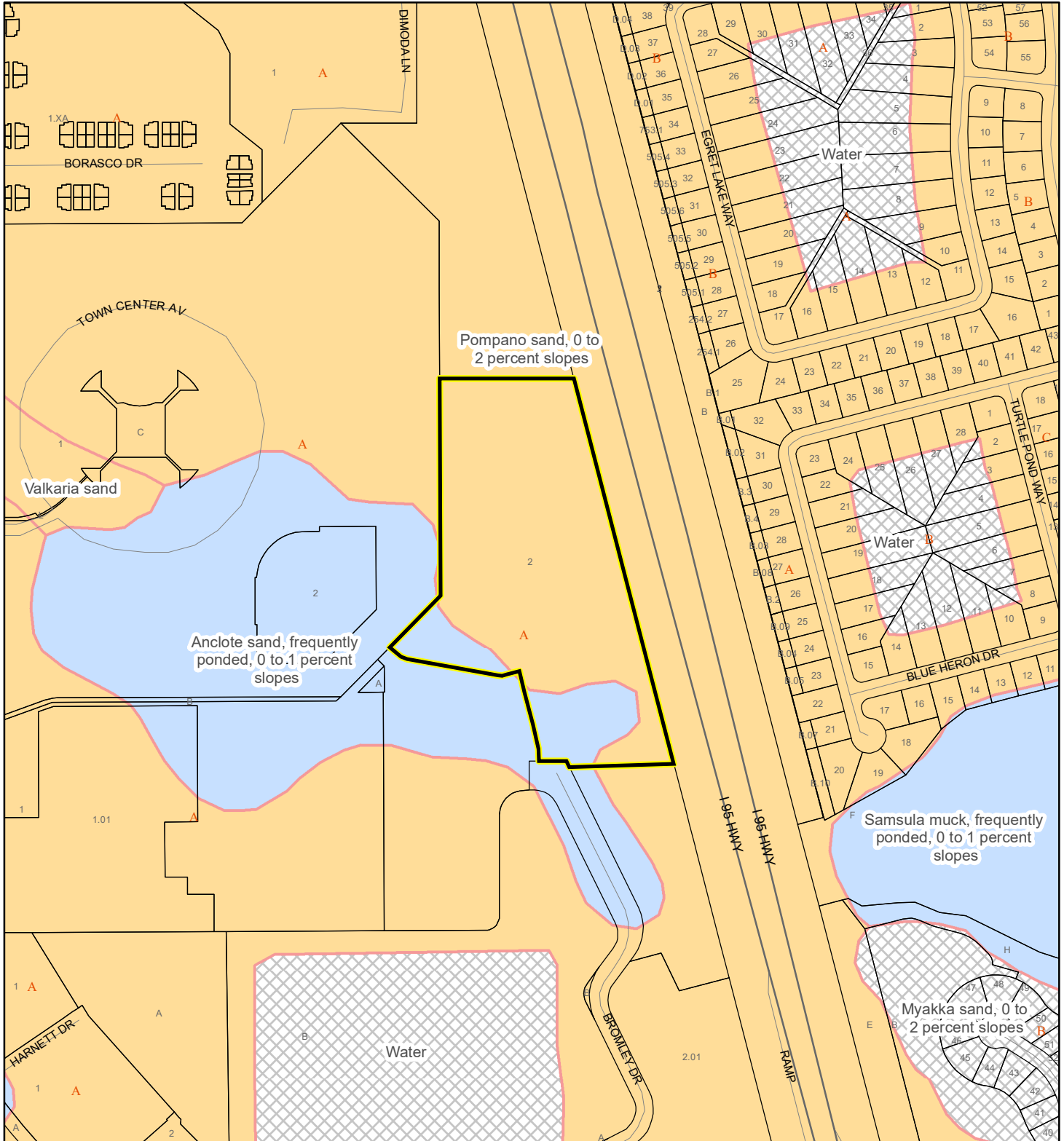
THE VIERA COMPANY  
25Z00032



# USDA SCSSS SOILS MAP

THE VIERA COMPANY

25Z00032



1:4,800 or 1 inch = 400 feet

This map was compiled from recorded documents and does not reflect an actual survey. The Brevard County Board of County Commissioners does not assume responsibility for errors or omissions hereon.

Produced by BoCC - GIS Date: 7/30/2025

## USDA SCSSS Soils

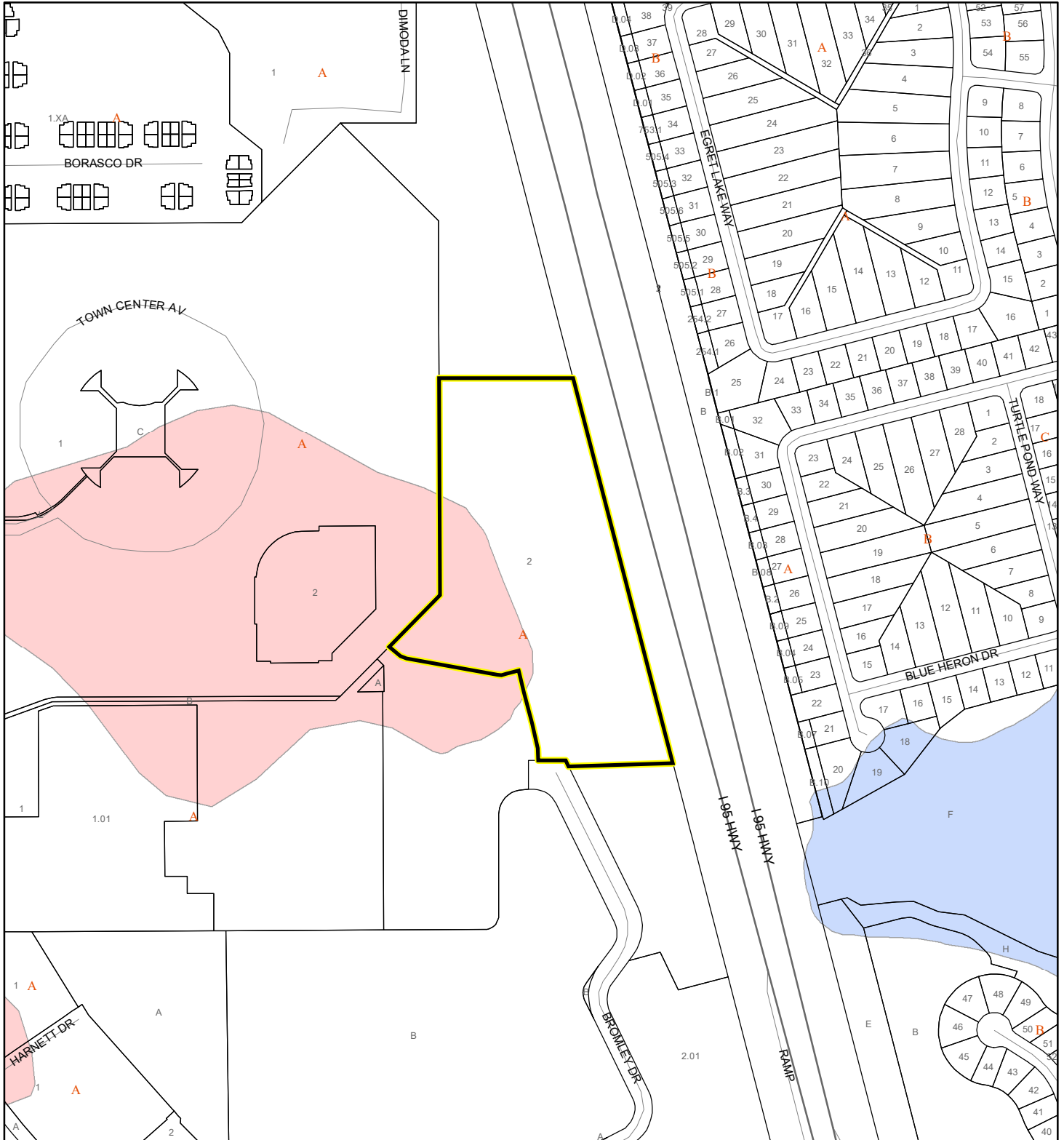
- Aquifer and Hydric
- Aquifer
- Hydric
- None

- Subject Property
- Parcels

# FEMA FLOOD ZONES MAP

THE VIERA COMPANY

25Z00032



1:4,800 or 1 inch = 400 feet

This map was compiled from recorded documents and does not reflect an actual survey. The Brevard County Board of County Commissioners does not assume responsibility for errors or omissions hereon.

Produced by BoCC - GIS Date: 7/30/2025

## FEMA Flood Zones

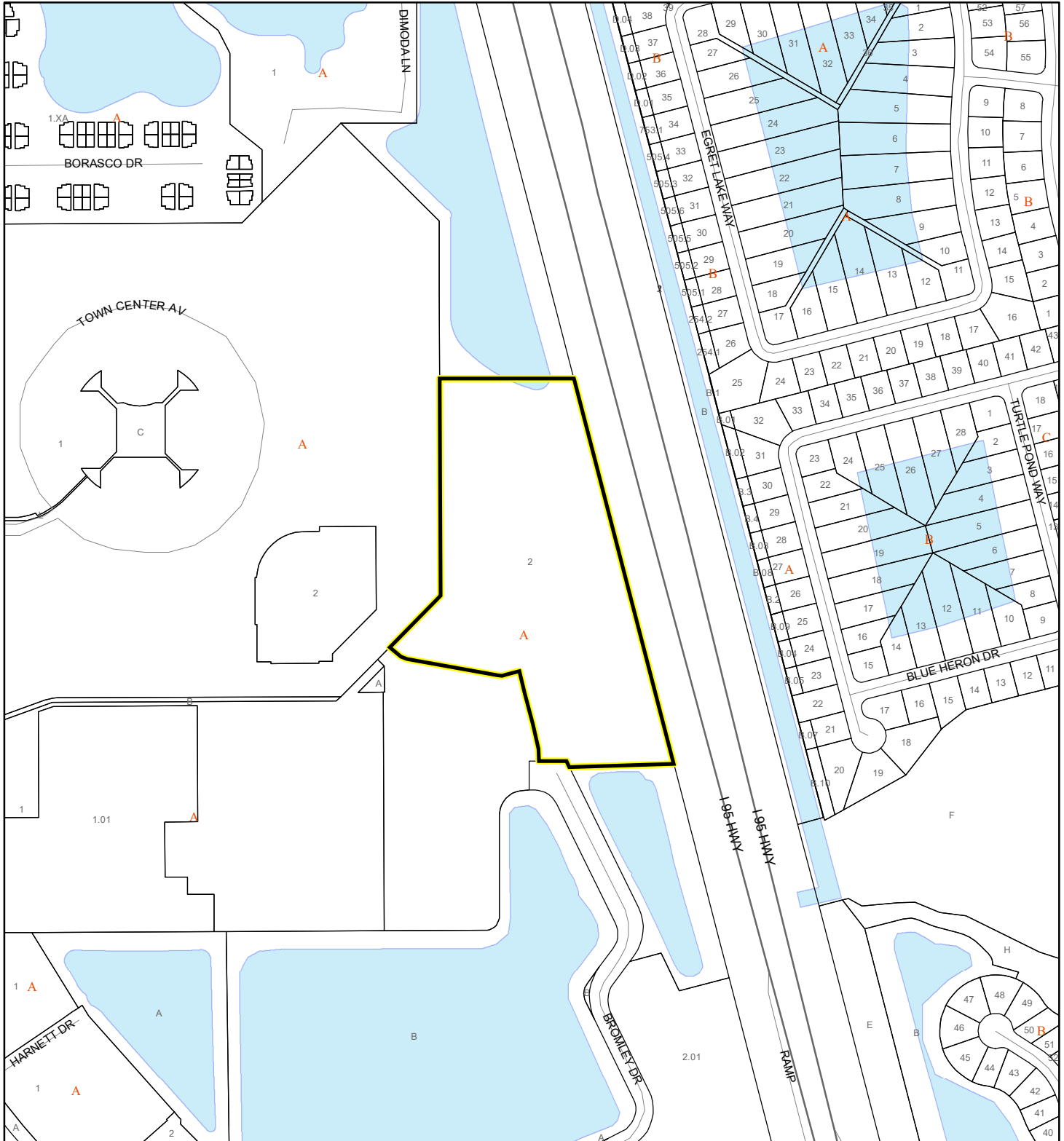
<span style="display:inline-block; width:15px; height:15px; background-color:lightcoral;"></span> A	<span style="display:inline-block; width:15px; height:15px; background-color:yellow;"></span> AO	<span style="display:inline-block; width:15px; height:15px; border:1px solid black;"></span> X
<span style="display:inline-block; width:15px; height:15px; background-color:lightyellow;"></span> AE	<span style="display:inline-block; width:15px; height:15px; background-color:lightblue;"></span> Open Water	
<span style="display:inline-block; width:15px; height:15px; background-color:lightblue;"></span> AH	<span style="display:inline-block; width:15px; height:15px; background-color:lightyellow;"></span> VE	
<span style="display:inline-block; width:15px; height:15px; border:2px solid yellow;"></span> Subject Property	<span style="display:inline-block; width:15px; height:15px; border:1px solid black;"></span> Parcels	



# COASTAL HIGH HAZARD AREA MAP

THE VIERA COMPANY

25Z00032



1:4,800 or 1 inch = 400 feet


This map was compiled from recorded documents and does not reflect an actual survey. The Brevard County Board of County Commissioners does not assume responsibility for errors or omissions hereon.

Produced by BoCC - GIS Date: 7/30/2025

 Subject Property

 Parcels

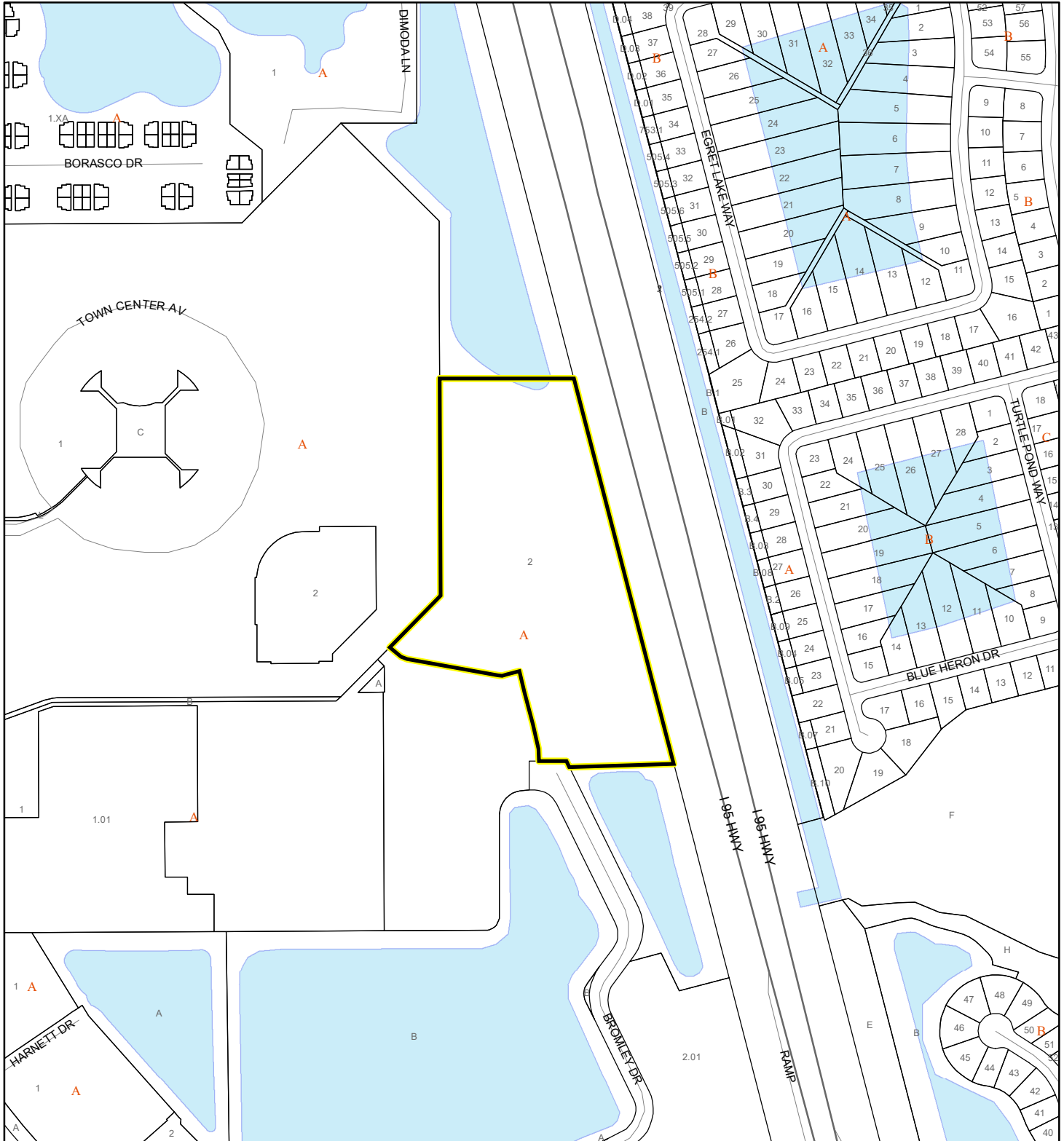
**Coastal High Hazard Area**

 SurgeZoneCat1

# INDIAN RIVER LAGOON SEPTIC OVERLAY MAP

THE VIERA COMPANY

25Z00032



1:4,800 or 1 inch = 400 feet

This map was compiled from recorded documents and does not reflect an actual survey. The Brevard County Board of County Commissioners does not assume responsibility for errors or omissions hereon.

Produced by BoCC - GIS Date: 7/30/2025

 Subject Property

 Parcels

**Septic Overlay**

 40 Meters

 60 Meters

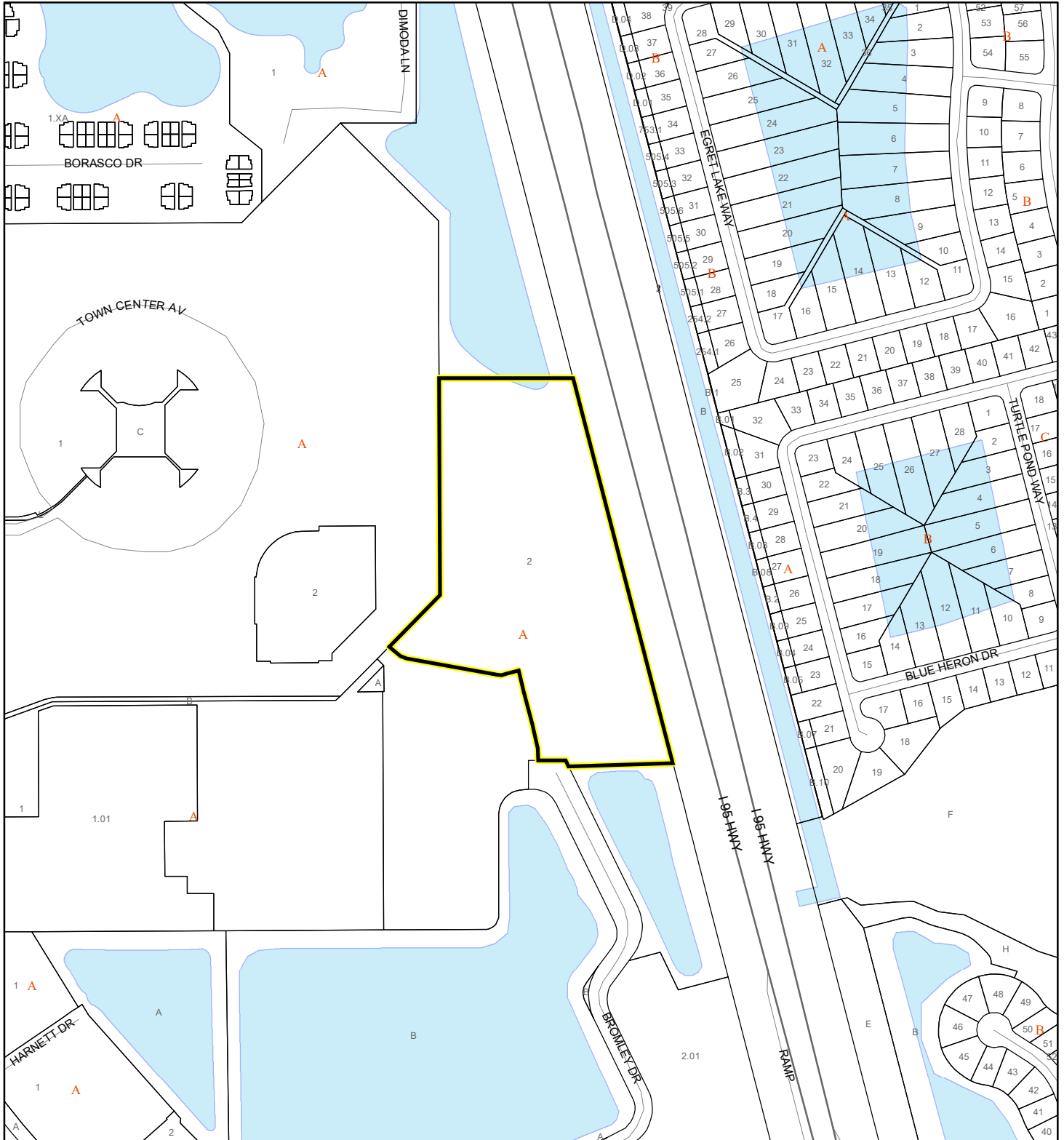
 All Distances



# EAGLE NESTS MAP

THE VIERA COMPANY

25Z00032



1:4,800 or 1 inch = 400 feet

This map was compiled from recorded documents and does not reflect an actual survey. The Brevard County Board of County Commissioners does not assume responsibility for errors or omissions hereon.

Produced by BoCC - GIS Date: 7/30/2025

 Subject Property

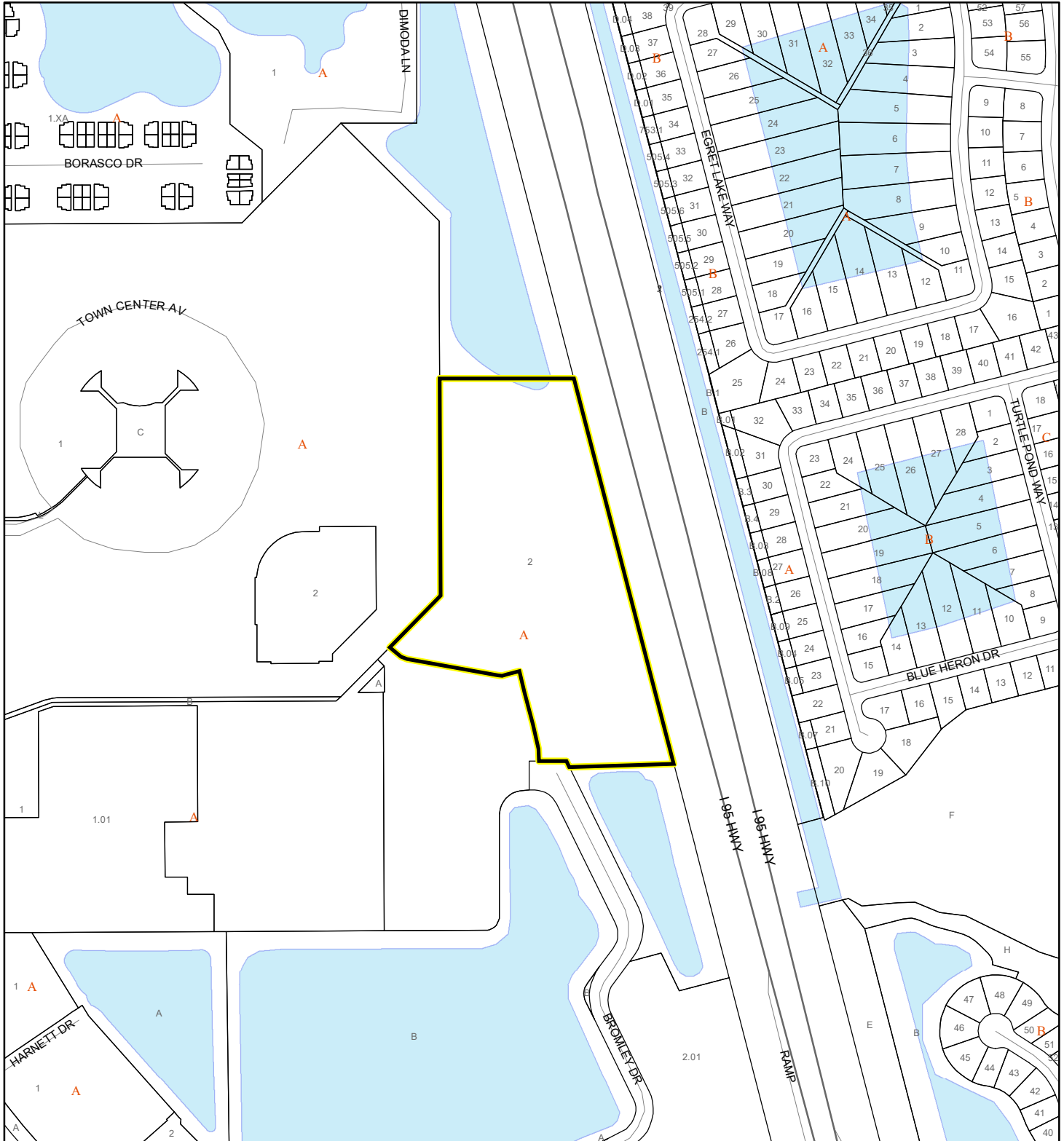
 Parcels

 Eagle Nests FWS

# SCRUB JAY OCCUPANCY MAP

THE VIERA COMPANY




25Z00032



1:4,800 or 1 inch = 400 feet

This map was compiled from recorded documents and does not reflect an actual survey. The Brevard County Board of County Commissioners does not assume responsibility for errors or omissions hereon.

Produced by BoCC - GIS Date: 7/30/2025

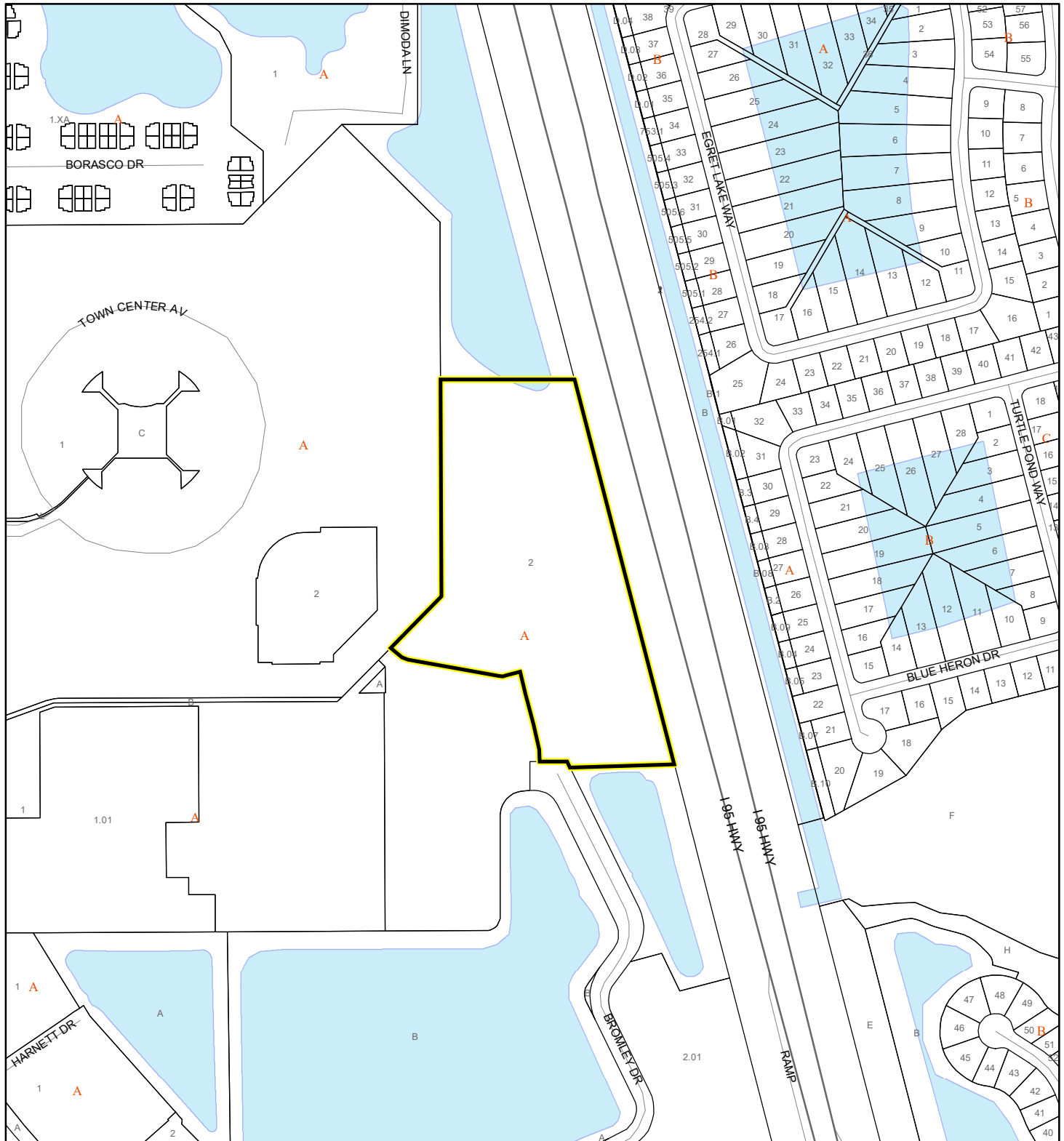
-  Subject Property
-  Parcels
-  Scrub Jay Occupancy



# SJRWMD FLUCCS UPLAND FORESTS - 4000 Series MAP

THE VIERA COMPANY

25Z00032



1:4,800 or 1 inch = 400 feet

This map was compiled from recorded documents and does not reflect an actual survey. The Brevard County Board of County Commissioners does not assume responsibility for errors or omissions hereon.

Produced by BoCC - GIS Date: 7/30/2025

## SJRWMD FLUCCS Upland Forests

- Upland Coniferous Forest - 4100 Series
- Upland Hardwood Forest - 4200 Series
- Upland Mixed Forest - 4300 Series
- Tree Plantations - 4400 Series

Subject Property

Parcels