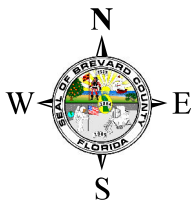
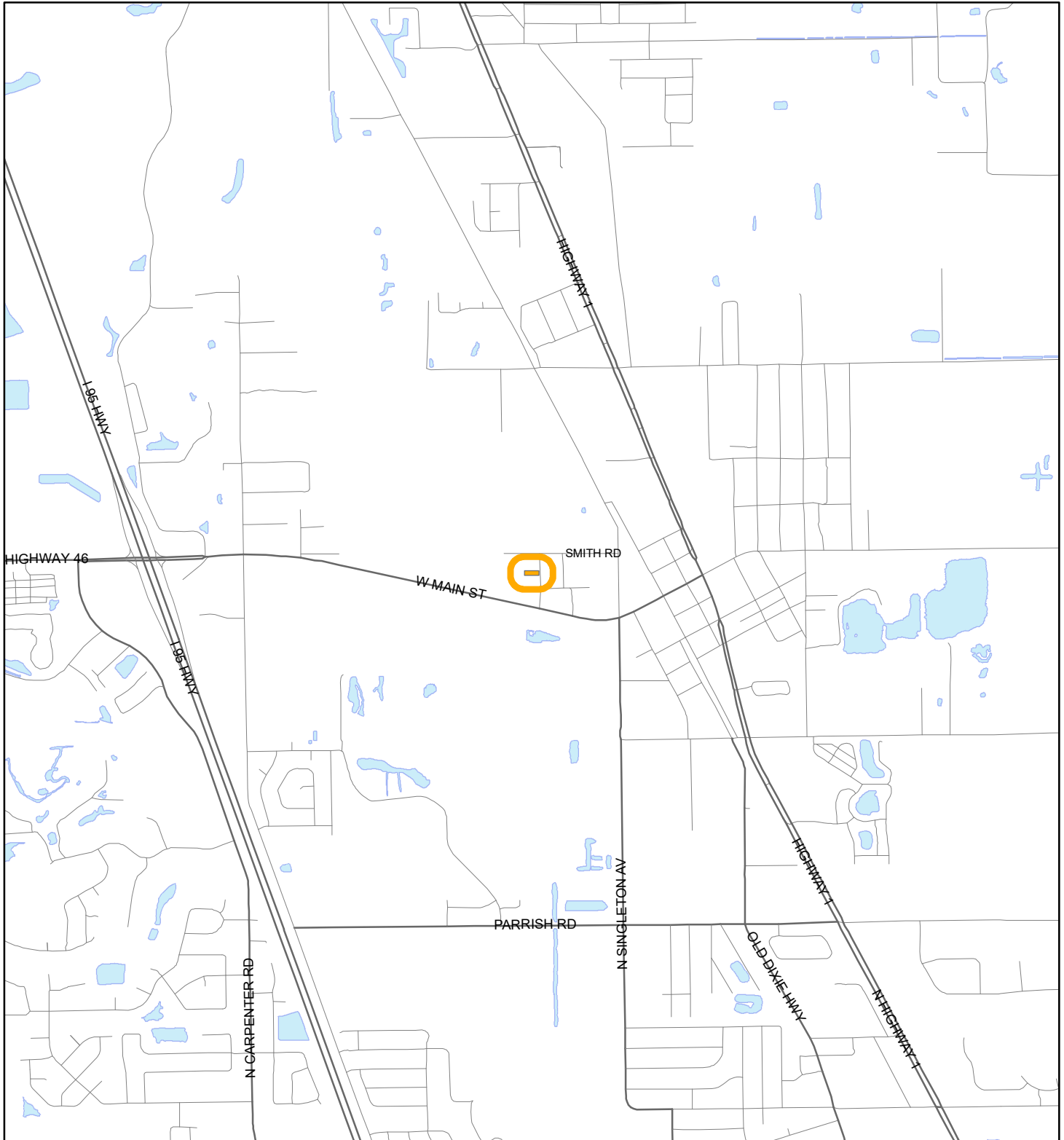


LOCATION MAP

CHRISTOPHER D. STROZIER

23V00047





1:24,000 or 1 inch = 2,000 feet

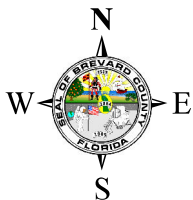
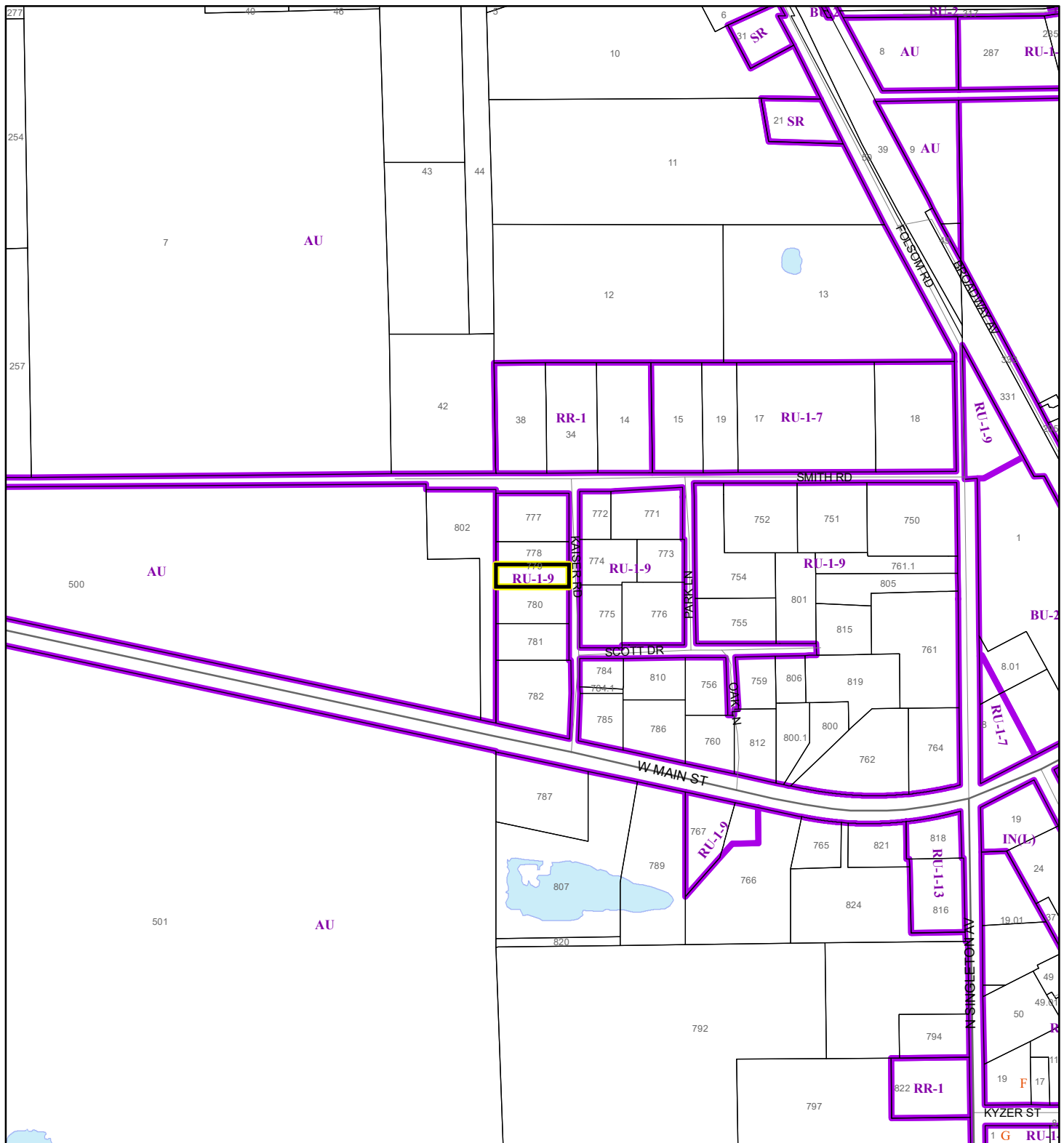
Buffer Distance: 200 feet

This map was compiled from recorded documents and does not reflect an actual survey. The Brevard County Board of County Commissioners does not assume responsibility for errors or omissions hereon.

Produced by BoCC - GIS Date: 11/28/2023

 Buffer
 Subject Property

23V00047



1:4,800 or 1 inch = 400 feet

This map was compiled from recorded documents and does not reflect an actual survey. The Brevard County Board of County Commissioners does not assume responsibility for errors or omissions hereon.

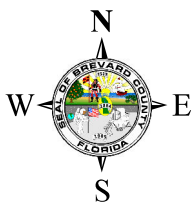
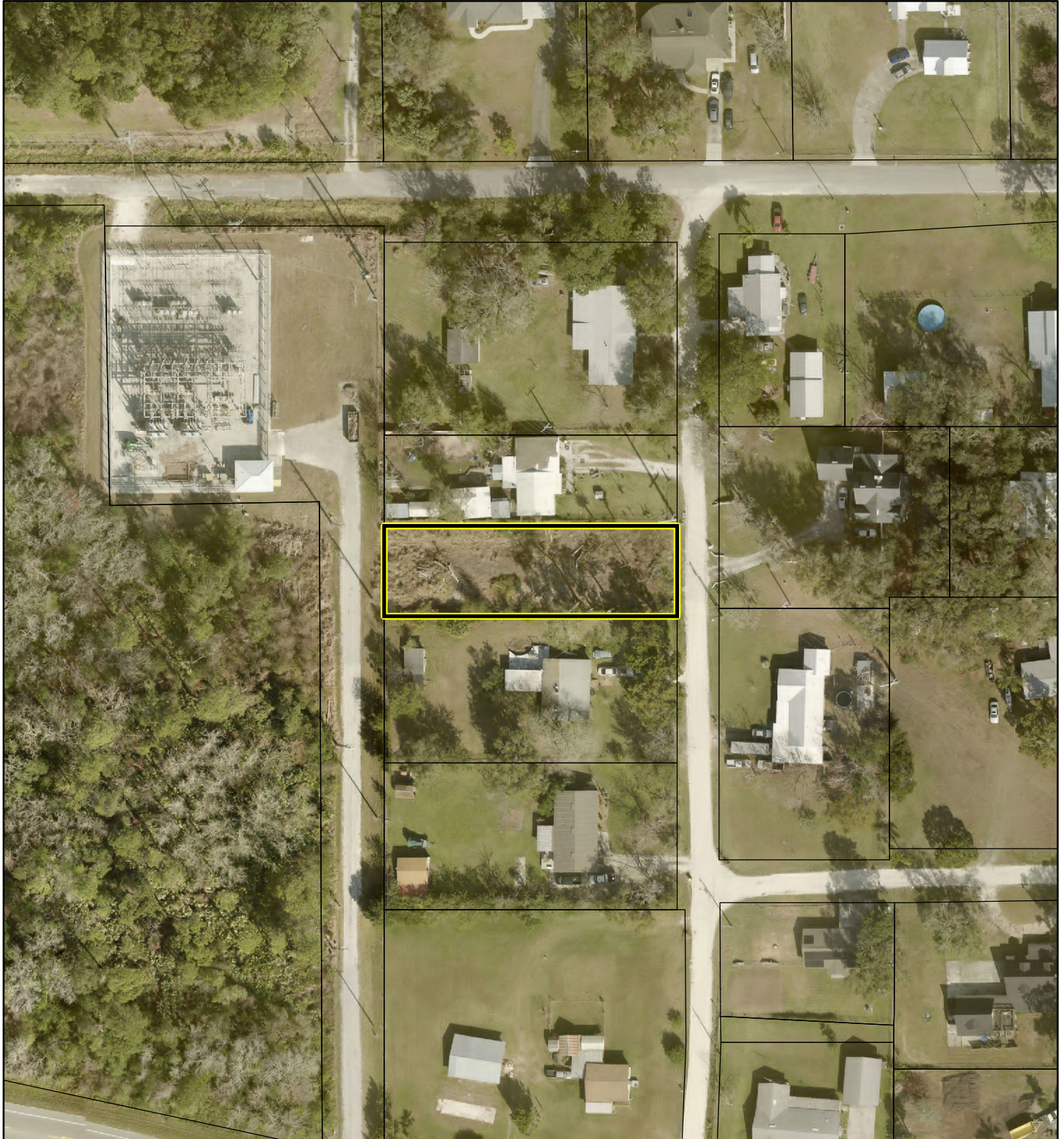
Produced by BoCC - GIS Date: 11/28/2023

Subject Property

Parcels

 Zoning

AERIAL MAP
CHRISTOPHER D. STROZIER
23V00047





1:1,200 or 1 inch = 100 feet

PHOTO YEAR: 2023

This map was compiled from recorded documents and does not reflect an actual survey. The Brevard County Board of County Commissioners does not assume responsibility for errors or omissions hereon.

Produced by BoCC - GIS Date: 11/28/2023

 Subject Property
 Parcels