

Attachment A



Thursday, June 18, 2026

RE: Emergency - Brevard County South Central WWTP Headworks Rehabilitation

Attention: Sherman Huffman

You have requested a quote for the following scope of work:

- Rehabilitation & modifications of existing headworks structure. Scope of work to include full headworks bypass for upstream spot-repairs to minimize downtime of the headworks. Installation of permanent HDPE pipe bypass system that is to be in place for bypass of the downstream headworks until such work can be coordinated and procured by Brevard County.

Also included is the removal of two (2) fine screen systems in the headworks, furnish and install new checker plate covers over the openings. Attached is the scope of the coatings with approximated quantity and material with final quantity to be determined based on inspection and required repairs.

The scope of work assumes zero interruption of work. Interruptions of work as directed by the owner due to weather or other factors are subject to cost increases to be borne by the owner.

Summary of Work: Full bypass of headworks approximately and up to 4 weeks for upstream repairs and coatings rehabs with final quantities to be determined as needed.

Approximate durations of coatings repairs are given at the bottom of scope provided by Crom.

Items specifically excluded from this scope include (Can price any of the below if requested):

- Permits
- Bonds
- Trench Box (Depth not assumed to exceed 5')
- Dewatering
- Pavement removal or replacement
- Excavation, shoring, sheeting.
- Provide or install of any mechanical equipment, including all gates.
- Termite treatments
- Stone or other subgrade materials
- Any excavation, subbase, compaction, or grading
- Layout of the structure

- Provisions for any special access including additional manpower.
- Permitting fees
- Certified Payroll
- Davis Bacon or any scale wages by L7 or any of its subcontractors
- MBE or MWBE requirements or filings
- Maintenance of bypass system beyond the initial installation and duration of rehabilitation work.
- Any 'downstream' rehab of the headworks, indicated as "phase 2" of the scope provided by Crom

Approx. schedule of the scope of work:

- There is no completion deadline. Work can be scheduled as mutually agreeable.

L7 Construction, Inc. proposes to provide the labor, equipment, and materials for all of the above scope of work for the lump sum of **\$1,130,635.00 One Million One Hundred Thirty Thousand Six Hundred Thirty Five Dollars.**

Thank you for the opportunity to quote you on this scope of work if you have any questions or concerns please feel free to give me a call to discuss.

Brett Lefever
L7 Construction, Inc.
321-972-9325 office
407-760-7694 cell

275 Hunt Park Cove
Longwood, FL 32750
blefever@L7constructs.com



May 29, 2026

PROPOSAL 20260474

**CONCRETE REPAIRS, RESURFACING, AND COATINGS APPLICATION
HEADWORKS STRUCTURE
BREVARD COUNTY, FLORIDA**

CROM Coatings and Restorations ("CCR"), a Division of CROM, LLC, proposes to provide labor and material for the repairs and coating of the concrete structure in accordance with applicable portions of the plans and specifications dated 06/01/2020, for **L7 Construction, Inc.** ("Client"). The work will be completed in accordance with applicable codes and standards including OSHA, AWWA, AMPP, ICRI, ACI and standard prestressed concrete tank design. Any work not specifically detailed in Section 1 of this proposal shall be provided by others.

1. SERVICES TO BE FURNISHED BY CCR

CCR proposes to furnish supervision, labor, material, and equipment required to complete the work, except as noted in Section 2. The services to be furnished by CCR are specifically:

This scope of work is to be performed on the readily accessible portions of the following structure unless specified differently below:

• **Headworks Structure
Approximately 75' Long x 35' Wide**

Downstream Chambers: (Highlighted in Pink)

- Floor Square Footage: 630-SF (Estimated)
- Wall Square Footage: 1,794-SF (Estimated)
- Underside of Ceiling Square Footage: 189-SF (Estimated)
 - Damaged Concrete Repairs & High-Performance Coatings Application:
 - Up to 6-inches of depth and 2 layers of steel replacement: 1,045-SF / 523-CF (40% of Surface Areas)
 - Up to 3-inches of depth and 1 layer of steel replacement: 784 SF / 196 CF (30% of Surface Areas)
 - Up to 1-inch depth and no steel replacement: 784 SF / 65 CF (30% of Surface Areas)

Removed

Upstream Chambers: (Highlighted in Blue, Orange, and Green)

- Floor Square Footage: 616-SF (Estimated)
- Wall Square Footage: 3,078-SF (Estimated)
- Underside of Ceiling Square Footage: 185-SF (Estimated)
 - Damaged Concrete Repairs & High-Performance Coatings Application:
 - Up to 1-inch depth and no steel replacement: 388-SF / 32-CF (10% of Surface Areas)
 - Up to 1/4-inch of depth and no steel replacement: 776-SF / 16-CF (20% of Surface Areas)

Upstream Chambers: (Highlighted in Purple)

- Floor Square Footage: 65-SF (Estimated)
- Wall Square Footage: 541-SF (Estimated)
- Underside of Ceiling Square Footage: 20-SF (Estimated)
 - Damaged Concrete Repairs & High-Performance Coatings Application:
 - Up to 6-inches of depth and 2 layers of steel replacement: 250-SF / 125-CF (40% of Surface Areas)
 - Up to 3-inches of depth and 1 layer of steel replacement: 188-SF / 47-CF (30% of Surface Areas)
 - Up to 1-inch depth and no steel replacement: 188-SF / 16-CF (30% of Surface Areas)

LOCATIONS

CROM | GAINESVILLE, FL (HQ) | AUSTIN, TX | CHATTANOOGA, TN | FT MYERS, FL | RALEIGH, NC | WEST PALM BEACH, FL
CROM CFG | PINEHURST, TX | CROM CMT | HIGH POINT, NC | CROM MW | LITTLETON, CO | CROM WTS | HIGH POINT, NC

WWW.CROMCORP.COM

- a. **Mobilization of crew, equipment, and materials to jobsite.**
- b. **Work will be performed in 2 phases based on the bypass schedule provided by client.**
 - Phase 1 Concrete Repairs, Resurfacing, and Coatings Application of All Channels Upstream of GRC Chambers (Highlighted in Blue, Orange, Green, and Purple)
 - Phase 2 Concrete Repairs, Resurfacing, and Coatings Application of All Channels Downstream of GRC Chambers (Highlighted in Pink)
 1. Remove all existing coatings, deteriorated concrete, laitance, microbiologically induced corrosion (MIC) contamination, and unsound substrate materials by abrasive blasting or other approved mechanical means.
 2. Exposed reinforcing steel shall be abrasive blast cleaned to remove all corrosion products and contaminants.
 3. Replace and or splice in new rebar as needed to repair corroded and or damaged reinforcing bars.
 4. Following preparation, coat all exposed reinforcing steel with Tnemec Series N69 at 4.0-6.0 mils DFT.
 5. Following rebar priming, rebuild deteriorated concrete areas using Tnemec Series 217 Mortarcrete.
 6. After curing of the repair mortar, all repaired areas shall be blasted or otherwise mechanically abraded to achieve a minimum ICRI CSP 5 surface profile.
 7. Remove all dust and debris prior to primer application.
 8. Prime all repaired concrete surfaces with Tnemec Series N69 Epoxoline II at 4.0-6.0 mils DFT.
 9. Apply Tnemec Series G434 Perma-Shield H2S resistant Mortar applied at 125.0 mils DFT.
 10. Apply a finish coat of Tnemec Series G435 Perma-Glaze at 15.0-20.0 mils DFT
- c. **Link Seal Replacements: Quantity 2**
 - 1) Remove and replace (2) 4" link seals located at the wall the separates GRC chambers and Spirasmail / Gritcup mechanism.

***Please Note: The above scope of work does not include removal, repairs, or replacement of any valves or gates located in the areas of work mentioned above.**

2. MATERIALS AND SERVICES FURNISHED BY CLIENT OR OTHERS

It is understood that the following services shall be provided by others without expense to CCR:

- a. Client will grant or obtain free and uninterrupted access to the structure for all equipment and personnel necessary for CCR to perform the work set forth in this Proposal. It is imperative that hatch covers are not installed prior to the completion of CCR's scope of work to allow for maximum hatch opening. The Client will notify any and all processors of the project site that the Client has granted CCR free and uninterrupted access to the site. CCR shall be responsible for site cleanup and repair of damages caused by CCR or its subcontractors.
- b. The Client is responsible for the accuracy of locations for all subterranean structures and utilities. CCR will take responsible precautions to avoid known subterranean structures, and the Client waives any claim against CCR and agrees to defend, indemnify, and hold CCR harmless from any claim or liability for injury or loss, including costs to defend, arising from damage done to subterranean structures and utilities not identified or accurately located. In addition, Client agrees to compensate CCR for any time spent or expenses incurred by CCR in defense of any such claim.
- c. A continuous supply of potable water under 50-PSI pressure at the rate of 60-gallons per minute for the use of the CCR crew within 100-feet of each structure site.
- d. A continuous supply of electricity during the period of work: one 50-AMP, 110/220-volt service for the

operation of our power tools and accessories, located not more than 100-feet from each structure. Please be sure that all circuit breakers are ground-fault protected. If it is necessary for CCR to supply its own electric power, add \$500.00 per week to the contract amount. If scope of work includes ultra-high pressure water blasting, 20-AMP, 480-volt services is required.

- e. Any permit or other fees from any AHJ, as may be required for the work including but not limited to all connect/disconnect, impact and building/construction fees.
- f. Removal and replacement of equipment located in areas requiring repair to allow unimpeded access.
- g. A suitable container conveniently located on site for the use of the CCR crew to dispose of construction debris generated during the repairs/modifications.
- h. Sanitary facilities, including dedicated hand washing station per OSHA and ANSI standards, for the CCR crew for the duration of the project.
- i. Drainage and disposal of the structure's contents.
- j. Refilling, disinfecting, bacteriological sampling, and testing of the tank's contents.
- k. Cleaning the interior and exterior of the structure and accessories.
- l. Complete lock-out and tag-out of the subject structure prior to personnel entering each structure. The Client will be required to provide all materials for this process. The Client will be responsible for demonstrating to CCR that the lock-out procedure is complete, and the structure is rendered "safe" before CCR performs air quality testing to enter each structure.
- m. All professional engineering design services.
- n. Confined space compliance including hole watch, ventilation, retrieval system, and safe and clear access to the work area compliant to all local, state, and federal regulations for the duration of our work.
- o. Proper environmental conditions including ambient temperature, moisture control and curing conditions.
- p. Adhesion testing as required by the specifications.
- q. Hazardous material removal and disposal as required by the specifications.

3. SCHEDULE, COMMENCEMENT, AND DELAYS

This quotation is valid for 30-days. Should this quotation expire, a new quotation will be required to reflect updated pricing due to market changes.

CCR will be prepared to start work on or before July 13, 2026, the Anticipated Construction Start Date, and will undertake to furnish sufficient labor, materials, and equipment to complete construction of our scope of work with the durations noted below:

- Phase 1: 4 Weeks (multiple shifts and crews as needed)**
- Phase 2: 24 Weeks (multiple shifts and crews as needed)**

LL	DESCRIPTION	WIDTH (ft)	HEIGHT (ft)	INSTRUMENT	DATE	BY	CHKD	APPROVED
PS-1	INFLUENT	48"	60"	318 S.S./COMPOSITE				
PS-2	INFLUENT	48"	60"	318 S.S./COMPOSITE				
PS-3	SOUTH	30"	60"	318 S.S./COMPOSITE				
PS-4	GRT FLOZ	30"	60"	318 S.S./COMPOSITE				
PS-5	GRT	48"	60"	318 S.S./COMPOSITE				
PS-6	WALL	30"	60"	318 S.S./COMPOSITE				
PS-7	WALL	30"	60"	318 S.S./COMPOSITE				
PS-8	SOUTH	30"	60"	318 S.S./COMPOSITE				
PS-9	SOUTH	30"	60"	318 S.S./COMPOSITE				
PS-10	SOUTH FLOW	144"	30"	318 S.S./COMPOSITE				
PS-11	SOUTH FLOW	144"	30"	318 S.S./COMPOSITE				
PS-12	SPLITTING	40"	60"	318 S.S./COMPOSITE				
PS-13	SPLITTING	40"	60"	318 S.S./COMPOSITE				
PS-14	BRICKWORK	40"	60"	318 S.S./COMPOSITE				

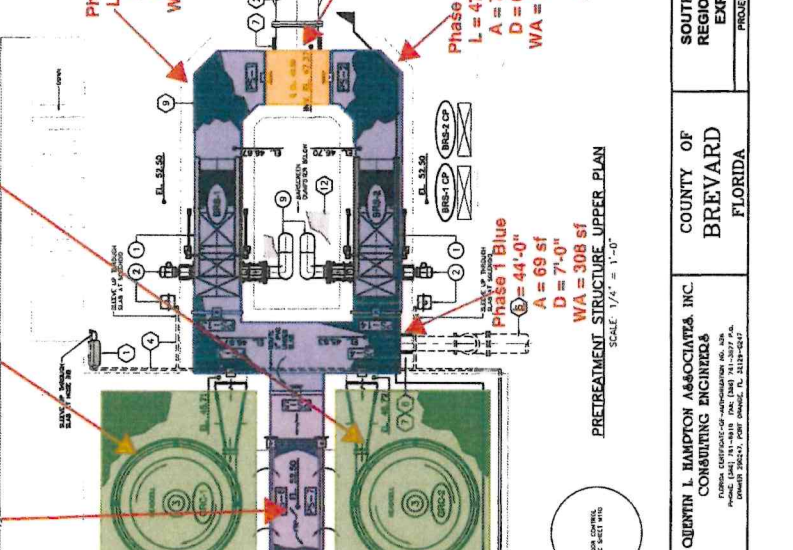
NOTE: SEE SHEET M100A FOR GATE DETAILS

1. ALL SPONGE REPAIRS SHALL BE PERFORMED IN ACCORDANCE WITH THE CENTRAL FLORIDA WATER TREATMENT PLANT AND LIME-SOIL INSTALLED. REPAIRS OVER 24" HAVE CELL CAST DISK.
2. ALL DIP EMPTY LINES.
3. ALL WASH WATER CONNECTIONS HAVE TO INCLUDE FILTER AND SHUT OFF VALVE FROM TO EQUIPMENT CONNECTION.

1. GATE SCHEDULE
2. SCREENS REMOVED FROM PRESS AND CONTROL STATION (2 TYP) SEE DETAILS SHEET M107
3. GRT REMOVAL UNIT (2 TYP) SEE DETAILS SHEET M108
4. NOT SHOWN
5. FINE SCREEN (2 TYP) SEE DETAILS SHEET M105
6. FINE SCREEN DEWATERING SCREENPRESS DETAILS SHEET M107
7. FINE SCREEN SOLIDS DISCHARGE CHUTE ADAPTER
8. COOP CONTROL UNIT SEE DETAILS SHEET M110
9. HOPIRONE SHUT AT BOTTOM OF DISCHARGE



1. WASH STATION WITH HOSE REEL SEE DETAILS SHEET M107
2. 36" DIP INFLUENT PIPING
3. 30" DIP EFFLUENT PIPING
4. 2" SCH40 PVC REUSE
5. 30" DIP
6. 12" DIP INFLUENT PIPING
7. LINK-SEAL CELL CAST DISK ON SHUT M107
8. 4" SCREENING CHUTE (SEE DETAIL)
9. REINFORCED SOLID GREY RCP RICHING (TYPICAL FOR PHASE 3/PHASE 10)
10. ALUMINUM LADDER
11. 36"x36" OPENING WITH FRP
12. FRAMED GRT CHIMNEY IN ALUMINUM AND COVERED WITH ALUMINUM SHIMMER PLATE
13. COATED WITH 1/8" RESISTANT GROUT



SEE SHEET M100A FOR AS-BUILT ELEVATIONS

RECORD DRAWING

THIS IS A CONSTRUCTION RECORD DRAWING. IT IS NOT TO BE USED FOR THE DESIGN OF THE PROJECT. THE DESIGNER IS NOT RESPONSIBLE FOR THE ACCURACY OF THE INFORMATION SHOWN ON THIS DRAWING.

Mead & Hunt

QUENTIN L. HAMPTON ASSOCIATES, INC.
CONSULTING ENGINEERS &
FLORIDA CONTRACTOR OF INVESTIGATION, INC.
PHONE: (407) 761-1818 FAX: (407) 761-1877
CORPORATE OFFICE: 1000 W. UNIVERSITY BLVD., SUITE 200, BOCA RATON, FL 33432

PROJECT NO. BC17

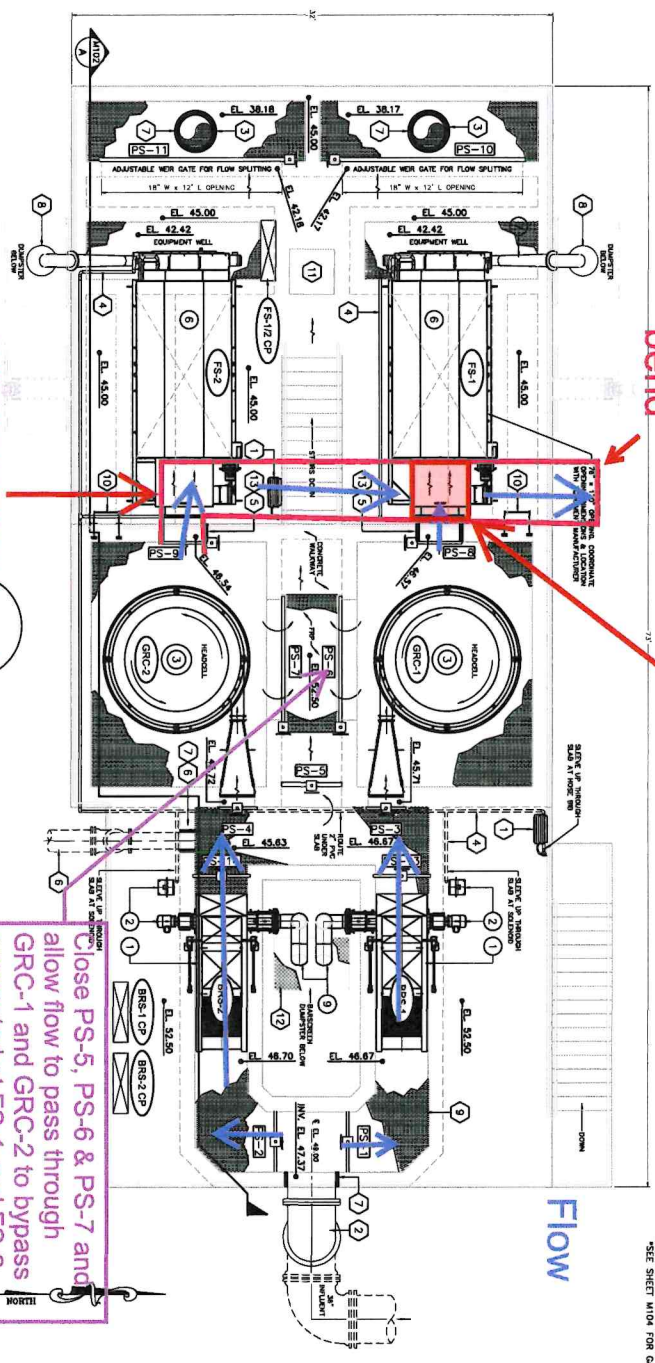
SHEET NO. M100

OF 273

Removed

- 1 BAR SCREEN (2 TYP) SEE DETAIL SHEET M105
- 2 SCREENING WASHING PRESS AND CONTROL STATION (2 TYP) SEE DETAILS SHEET M107
- 3 GIRT REMOVAL UNIT (2 TYP) SEE DETAIL SHEET M105
- 4 NOT SHOWN
- 5 NOT SHOWN
- 6 FINE SCREENS (2 TYP) SEE DETAIL SHEET M106
- 7 FINE SCREEN DEMONSTRATION SCREENS AND DISCHARGE CHUTE (2 TYP) SEE DETAIL SHEET M107
- 8 ODOR CONTROL UNIT SEE DETAIL SHEET M110
- 9 RECIRCULATE SKIRT AT BOTTOM OF DISCHARGE

- NOTES:
1. ALL GROUND PENETRATIONS 3/4" OR SMALLER THROUGH REINFORCING WALLS HAVE CENTER-LINK HOPE WALL SLEEVE AND LINK-450A INSTALLED. REINFORCING OVER 24" HAVE CELL CAST DENSE.
 2. ALL DWP EPOXY UNED
 3. ALL WASH WATER CONNECTIONS HAVE 10 MICRON FILTERS AND SHUT OFF VALVE PRIOR TO EQUIPMENT CONNECTION.



24" HDPE 90 bend

24" HDPE Tee

24" HDPE 90 bend

Close PS-5, PS-6 & PS-7 and allow flow to pass through GRC-1 and GRC-2 to bypass connected at FS-1 and FS-2

ID.	DESCRIPTION	WIDTH (IN)	HEIGHT (IN)	MAX HEAD (FT)	GATE SCHEDULE	FRAME MATERIAL / GATE MATERIAL	OPERATOR TYPE / STAND
PS-1	WRIGHT NORTH	48"	60"	5'	INBOUND / OPENING / UPWARD	218 S.S. / COMPOSITE	TYPE 2 / FRAME
PS-2	WRIGHT SOUTH	48"	60"	5'	OUTBOUND / OPENING / UPWARD	218 S.S. / COMPOSITE	TYPE 2 / FRAME
PS-3	GIRT FEED NORTH	28"	60"	5'	UPWARD / OPENING / UPWARD	218 S.S. / COMPOSITE	TYPE 2 / FRAME
PS-4	GIRT FEED SOUTH	28"	60"	5'	UPWARD / OPENING / UPWARD	218 S.S. / COMPOSITE	TYPE 2 / FRAME
PS-5	NORTH SCREEN BYPASS	48"	60"	5'	DOWNWARD / OPENING / DOWNWARD	218 S.S. / COMPOSITE	TYPE 1 / FRAME W/ INDICATOR
PS-6	NORTH SCREEN SOUTH BYPASS	48"	60"	5'	DOWNWARD / OPENING / DOWNWARD	218 S.S. / COMPOSITE	TYPE 1 / FRAME W/ INDICATOR
PS-7	SCREEN FEED NORTH	30"	30"	5'	UPWARD / OPENING / UPWARD	218 S.S. / COMPOSITE	TYPE 3 / FRAME
PS-8	SCREEN FEED SOUTH	30"	30"	5'	UPWARD / OPENING / UPWARD	218 S.S. / COMPOSITE	TYPE 3 / FRAME
PS-9	NORTH FLOW SPLITTING	144"	36"	5'	WALL / DOWNWARD / OPENING / DOWNWARD	218 S.S. / COMPOSITE	TYPE 3 / FRAME W/ INDICATOR
PS-10	SOUTH FLOW SPLITTING	144"	36"	5'	WALL / DOWNWARD / OPENING / DOWNWARD	218 S.S. / COMPOSITE	TYPE 3 / FRAME W/ INDICATOR
PS-11	BARSCREEN SHUTOFF	40"	60"	5'	UPWARD / OPENING / UPWARD	218 S.S. / COMPOSITE	TYPE 2 / FRAME
PS-14	BARSCREEN SHUTOFF	40"	60"	5'	UPWARD / OPENING / UPWARD	218 S.S. / COMPOSITE	TYPE 2 / FRAME

*SEE SHEET M104 FOR GATE DETAILS

- 1 WAGON STATION WITH HOIST REEL. SEE DETAIL SHEET M101
- 2 36" ØP INFLUENT PIPING
- 3 30" ØP EFFLUENT PIPING
- 4 2" SOLID PVC REUSE
- 5 30" ØP
- 6 12" ØP INFLUENT PIPING
- 7 LINK-50A CELL CAST DISK (ON SHEET M001)
- 8 24" SCREENING CHUTE (SEE DETAIL)
- 9 TENSIONED SOLID GEAR RING DESIGN (TYPICAL FOR AREAS SHOWN)
- 10 ALUMINUM JOCKER
- 11 36" x 36" OPENING WITH F.R.P.
- 12 FRAMED OUT OPENING IN ALUMINUM DIAMOND PLATE WITH ALUMINUM
- 13 GROUTED WITH ½S RESISTANT GROUT

PRETREATMENT STRUCTURE UPPER PLAN

SCALE: 1/4" = 1'-0"

SCALE IN FEET

REVISIONS		REVISIONS			
NO.	BY	DATE	NO.	BY	DATE
QUANTIN L. HANPION ASSOCIATES, INC. CONSULTING ENGINEERS 17000 US HIGHWAY 90, SUITE 200 FORT WORTH, TEXAS 76155 PHONE: (817) 331-8800 FAX: (817) 331-2877 WWW: WWW.QLHA.COM			COUNTY OF BREVARD FLORIDA		
PROJECT NO. 0617			SOUTH CENTRAL REGIONAL WWTF EXPANSION		
DRAWN BY: JOK			PRETREATMENT STRUCTURE UPPER LEVEL PLAN		
SHEET NO. M100 OF 273			BRADLEY T. BLANK, P.E. LICENSE NO. 17150		

SEE SHEET M100A FOR AS-BUILT ELEVATIONS

Mead & Stunt RECORD DRAWING

THIS IS A REPRODUCTION OF THE ORIGINAL RECORD DRAWING. ANY CHANGES TO THIS DRAWING SHALL BE MADE BY THE ORIGINAL DRAWING ENGINEER OR HIS SUCCESSOR. THE REPRODUCTION ENGINEER IS NOT RESPONSIBLE FOR ANY ERRORS OR OMISSIONS.

