

Compactor enclosure

- over force main
- Short Term Impact: None
- Long term Impact: Separation does not allow County to access and dig up force main for maintenance and repairs

Compactor Cart Storage

- over force main
- Short Term Impact: None
- Long term Impact: Separation does not allow County to access and dig up force main for maintenance and repairs

Existing public manholes:

- Inspected on an as needed basis
- No short term or long term impact

Electrical Transformer and associated concrete pad

- over force main
- within 5' of sewer main
- Short Term Impact: None
- Long term Impact: Separation does not allow County to access and dig up sewer main and force main for maintenance and repairs

Generator and associated concrete pad

- over force main
- within 5' of sewer main
- Short Term Impact: None
- Long term Impact: Separation does not allow County to access and dig up sewer main and force main for maintenance and repairs

3' CURB TRANSITION
END TYPE 'D' CURB
SEE SHT. C-301 FOR GRADING
SEE SHT. C-802 FOR DETAILS

3' CURB TRANSITION TO FLUSH WITH
PAVEMENT FOR SIDEWALK RAMP (TYP.)
SEE GRADING SHT. C-301
SEE CURB DETAIL SHT. C-802

34-LF OF ALUM. HANDRAIL
SEE SHEETS C-301 & C-802

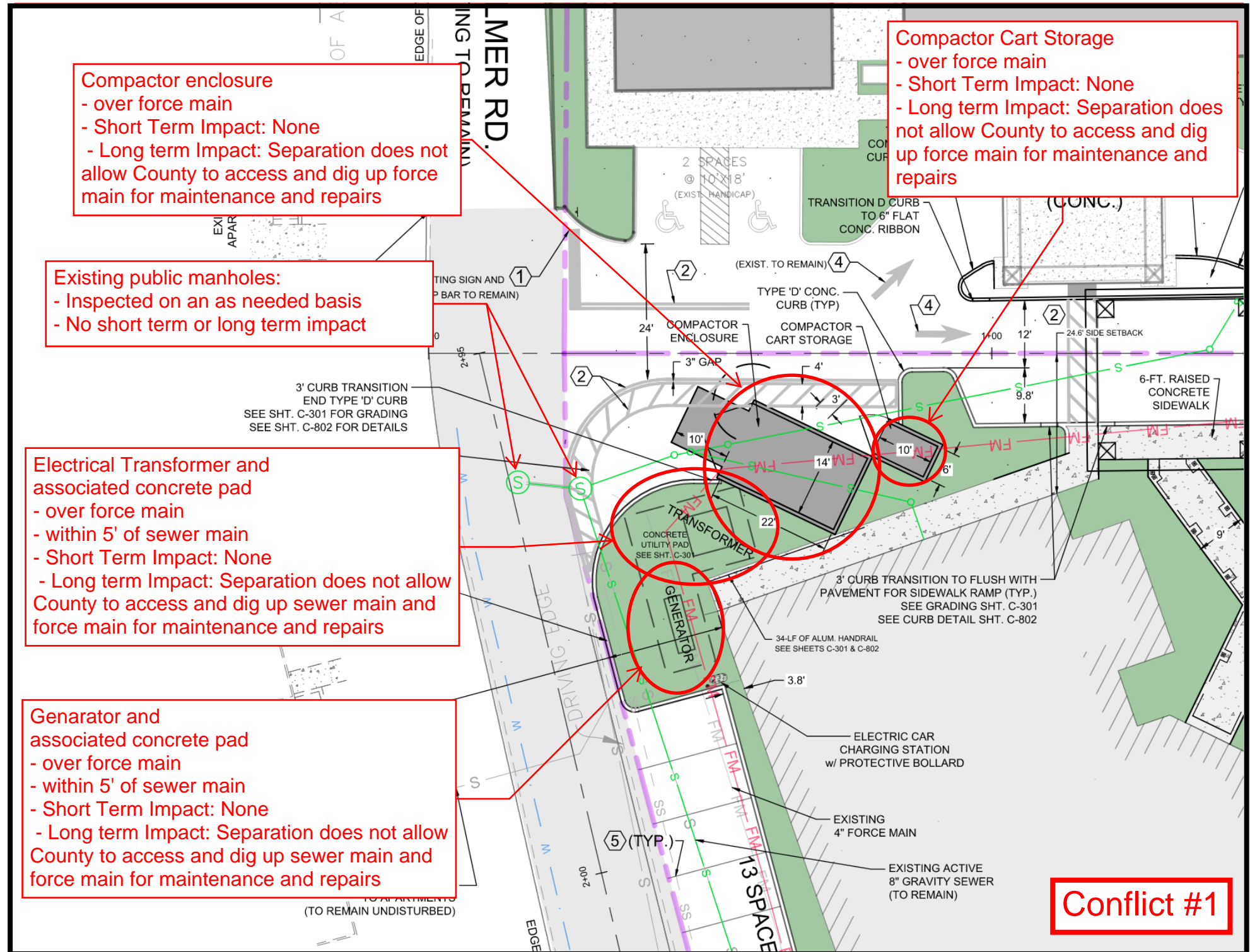
ELECTRIC CAR
CHARGING STATION
w/ PROTECTIVE BOLLARD

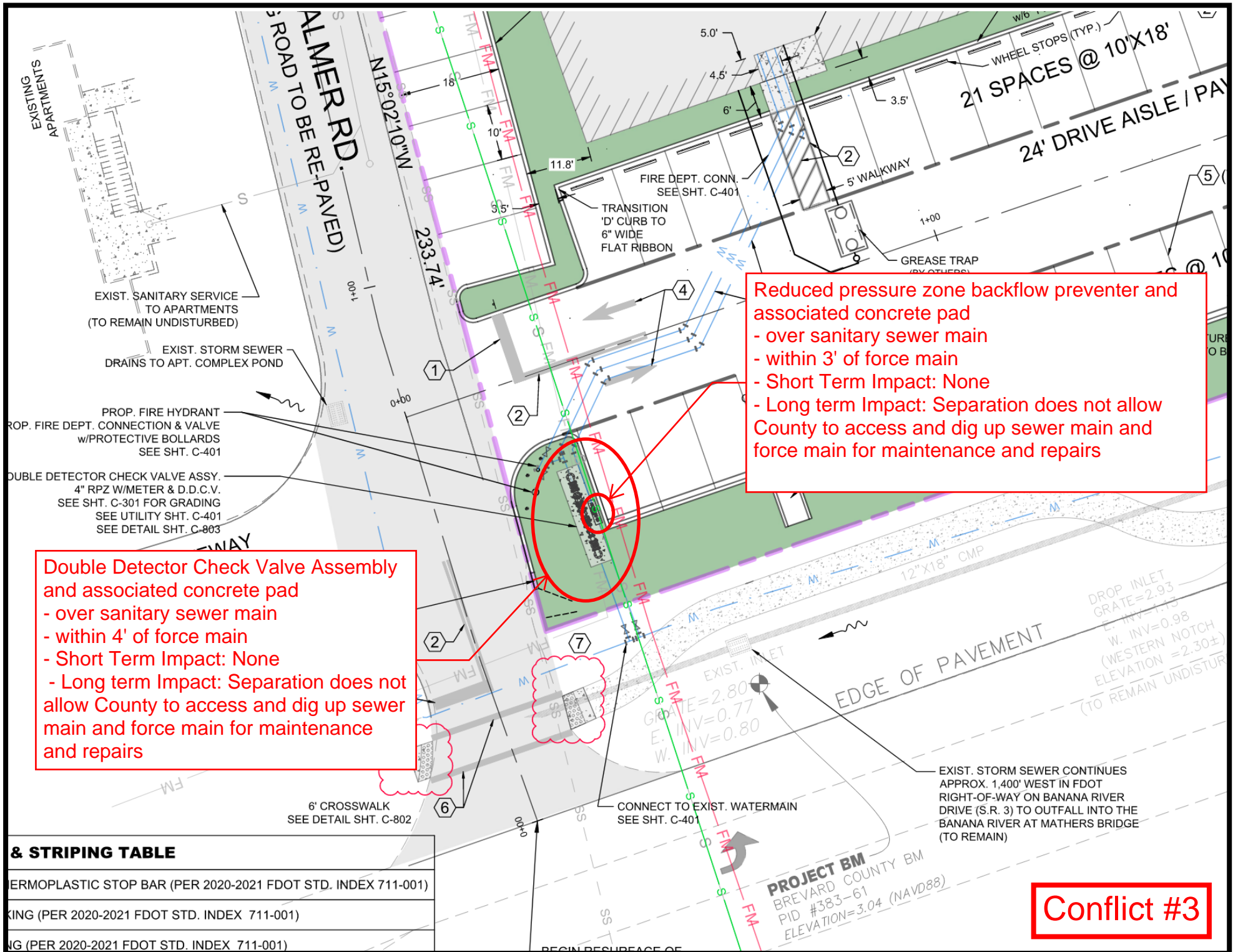
EXISTING
4" FORCE MAIN

EXISTING ACTIVE
8" GRAVITY SEWER
(TO REMAIN)

Conflict #1

(TO REMAIN UNDISTURBED)





& STRIPING TABLE	
TERMOPLASTIC STOP BAR (PER 2020-2021 FDOT STD. INDEX 711-001)	
KING (PER 2020-2021 FDOT STD. INDEX 711-001)	
NG (PER 2020-2021 FDOT STD. INDEX 711-001)	

Conflict #3