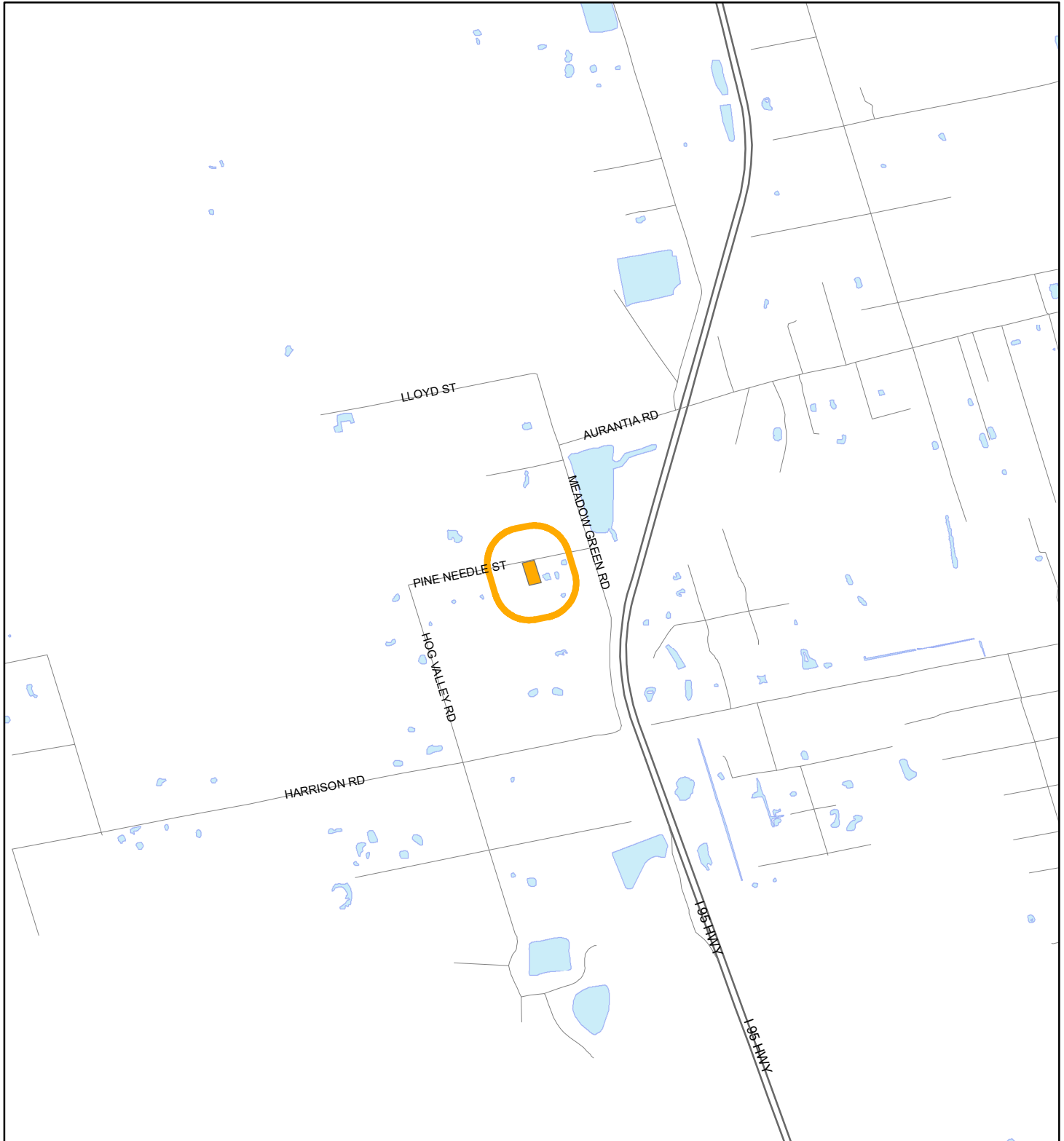


# LOCATION MAP

Pless, Travis & Rebecca  
23Z00080





1:24,000 or 1 inch = 2,000 feet

Buffer Distance: 500 feet

This map was compiled from recorded documents and does not reflect an actual survey. The Brevard County Board of County Commissioners does not assume responsibility for errors or omissions hereon.

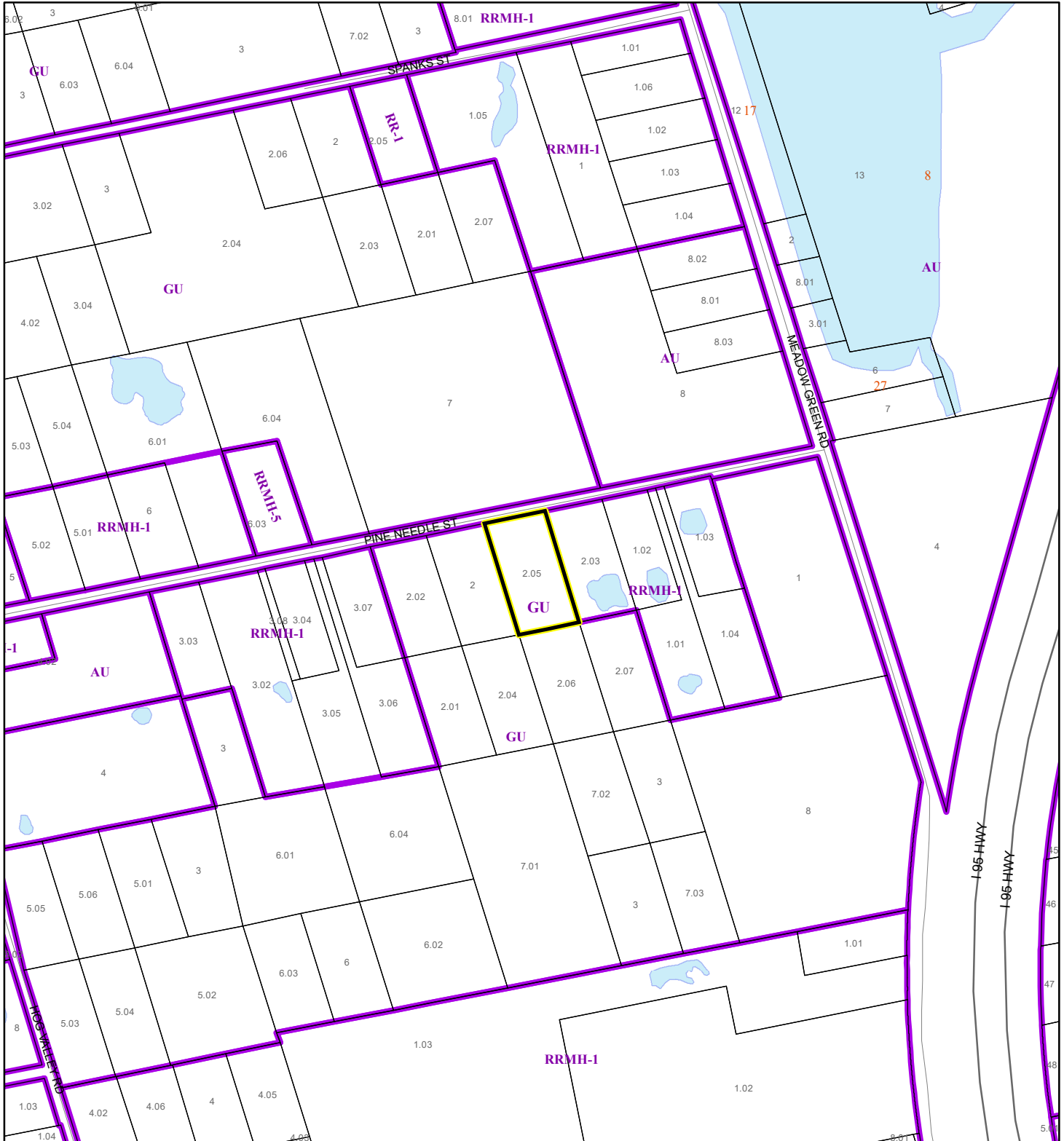
Produced by BoCC - GIS Date: 11/7/2023

 Buffer  
 Subject Property

# ZONING MAP

Pless, Travis & Rebecca


23Z00080



1:4,800 or 1 inch = 400 feet

This map was compiled from recorded documents and does not reflect an actual survey. The Brevard County Board of County Commissioners does not assume responsibility for errors or omissions hereon.

Produced by BoCC - GIS Date: 11/7/2023

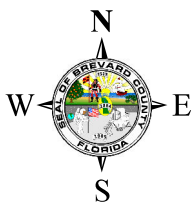
 Subject Property

 Parcels

 Zoning

# FUTURE LAND USE MAP



Pless, Travis & Rebecca  
23Z00080



1:4,800 or 1 inch = 400 feet

This map was compiled from recorded documents and does not reflect an actual survey. The Brevard County Board of County Commissioners does not assume responsibility for errors or omissions hereon.

Produced by BoCC - GIS Date: 11/7/2023

 Subject Property  
 Parcels



# AERIAL MAP

Pless, Travis & Rebecca

23Z00080




1:4,800 or 1 inch = 400 feet

PHOTO YEAR: 2023

This map was compiled from recorded documents and does not reflect an actual survey. The Brevard County Board of County Commissioners does not assume responsibility for errors or omissions hereon.

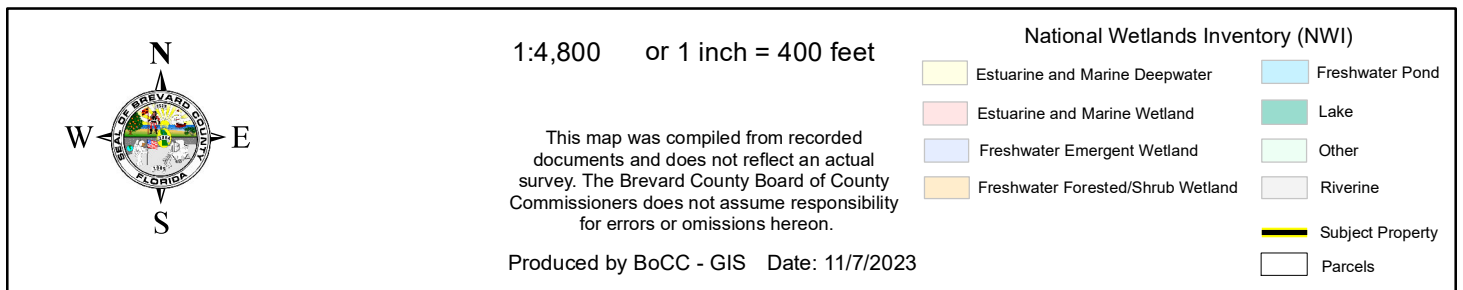
Produced by BoCC - GIS Date: 11/7/2023

 Subject Property

 Parcels



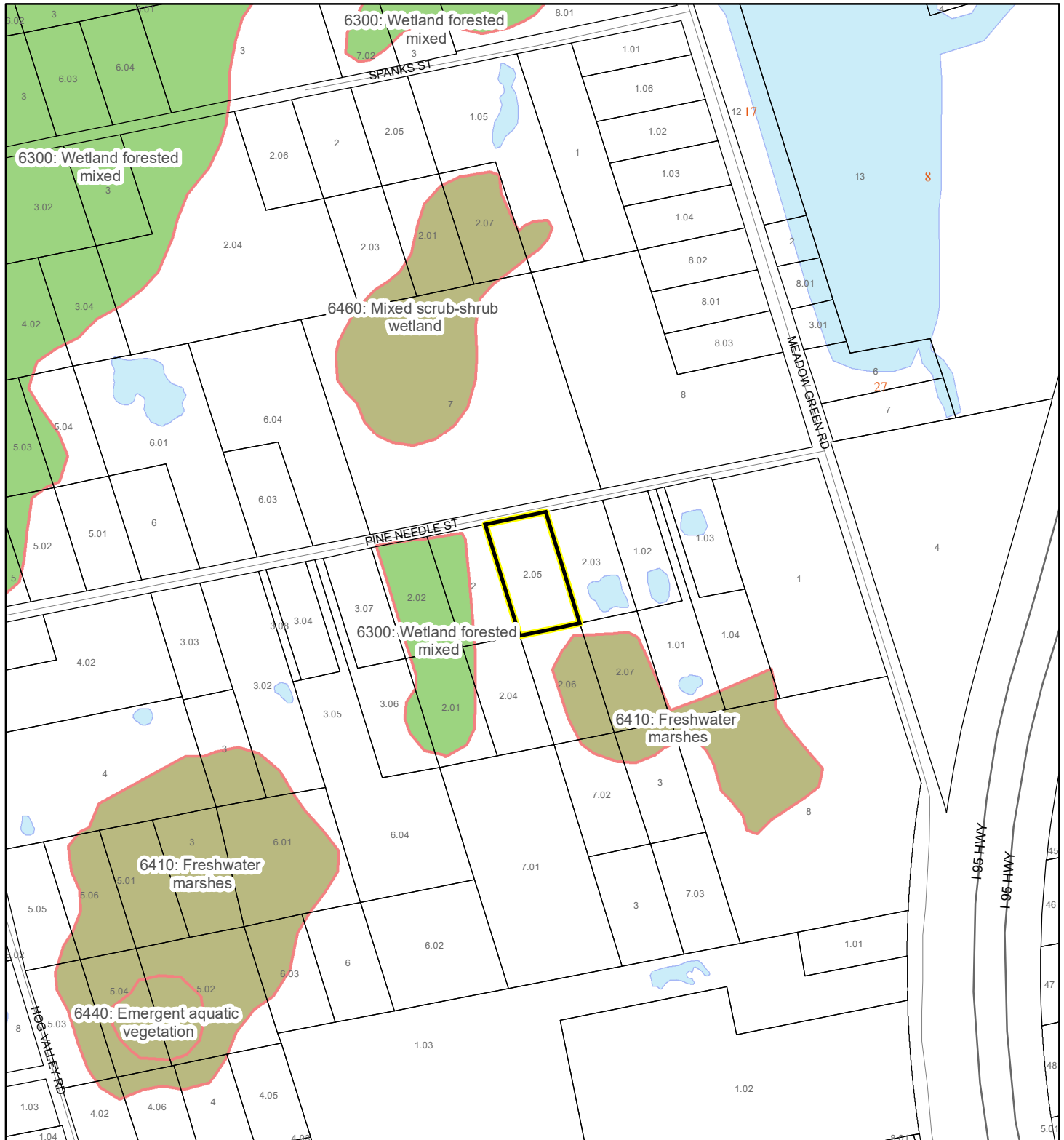
Pless, Travis & Rebecca  
23Z00080



# SJRWMD FLUCCS WETLANDS - 6000 Series MAP

Pless, Travis & Rebecca

23Z00080



1:4,800 or 1 inch = 400 feet

This map was compiled from recorded documents and does not reflect an actual survey. The Brevard County Board of County Commissioners does not assume responsibility for errors or omissions hereon.

Produced by BoCC - GIS Date: 11/7/2023

## SJRWMD FLUCCS WETLANDS

- Wetland Hardwood Forests - Series 6100
- Wetland Coniferous Forest - Series 6200
- Wetland Forested Mixed - Series 6300
- Vegetated Non-Forested Wetlands - Series 6400
- Non-Vegetated Wetland - Series 6500

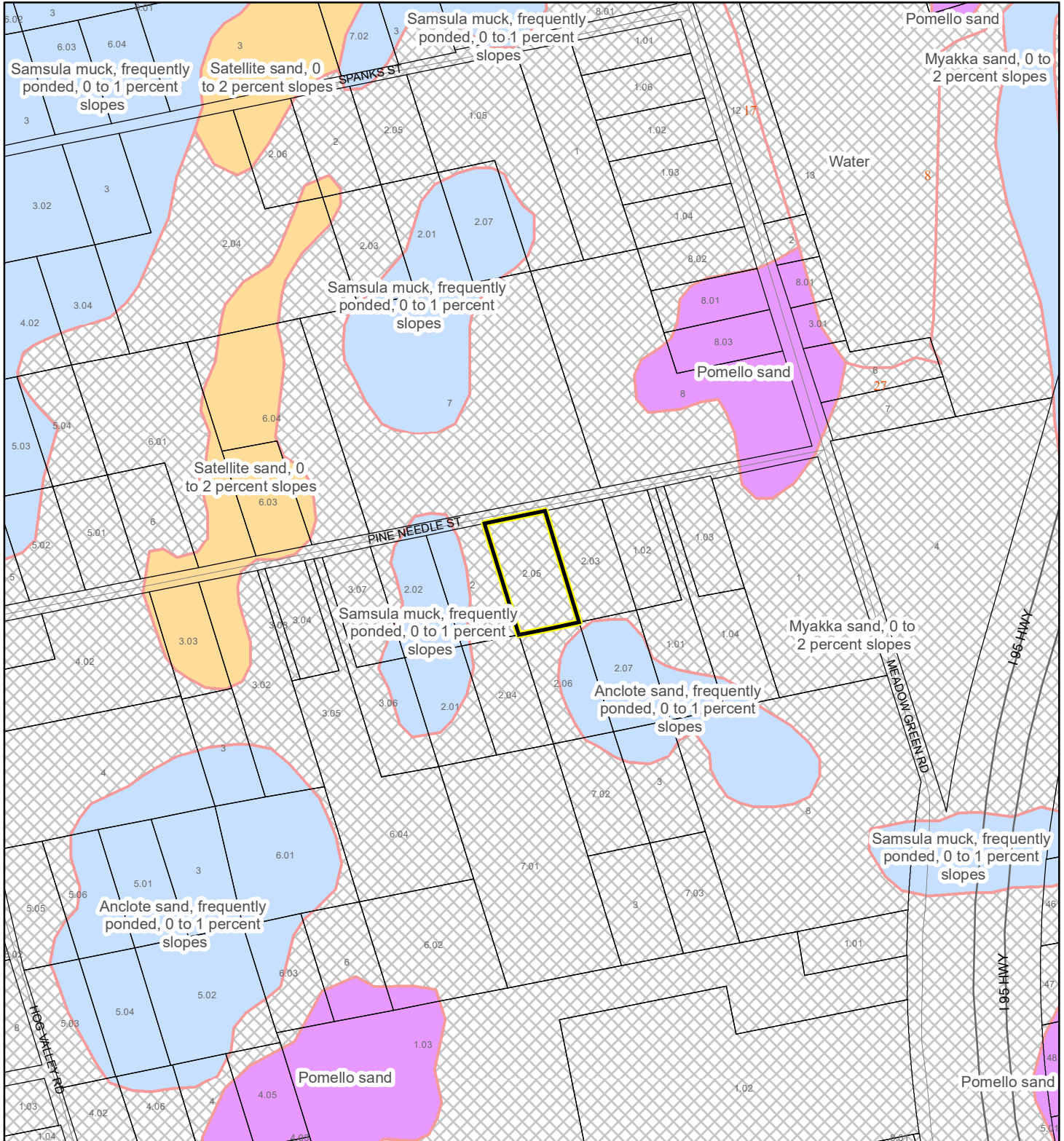
Subject Property

Parcels

# USDA SCSSS SOILS MAP

Pless, Travis & Rebecca

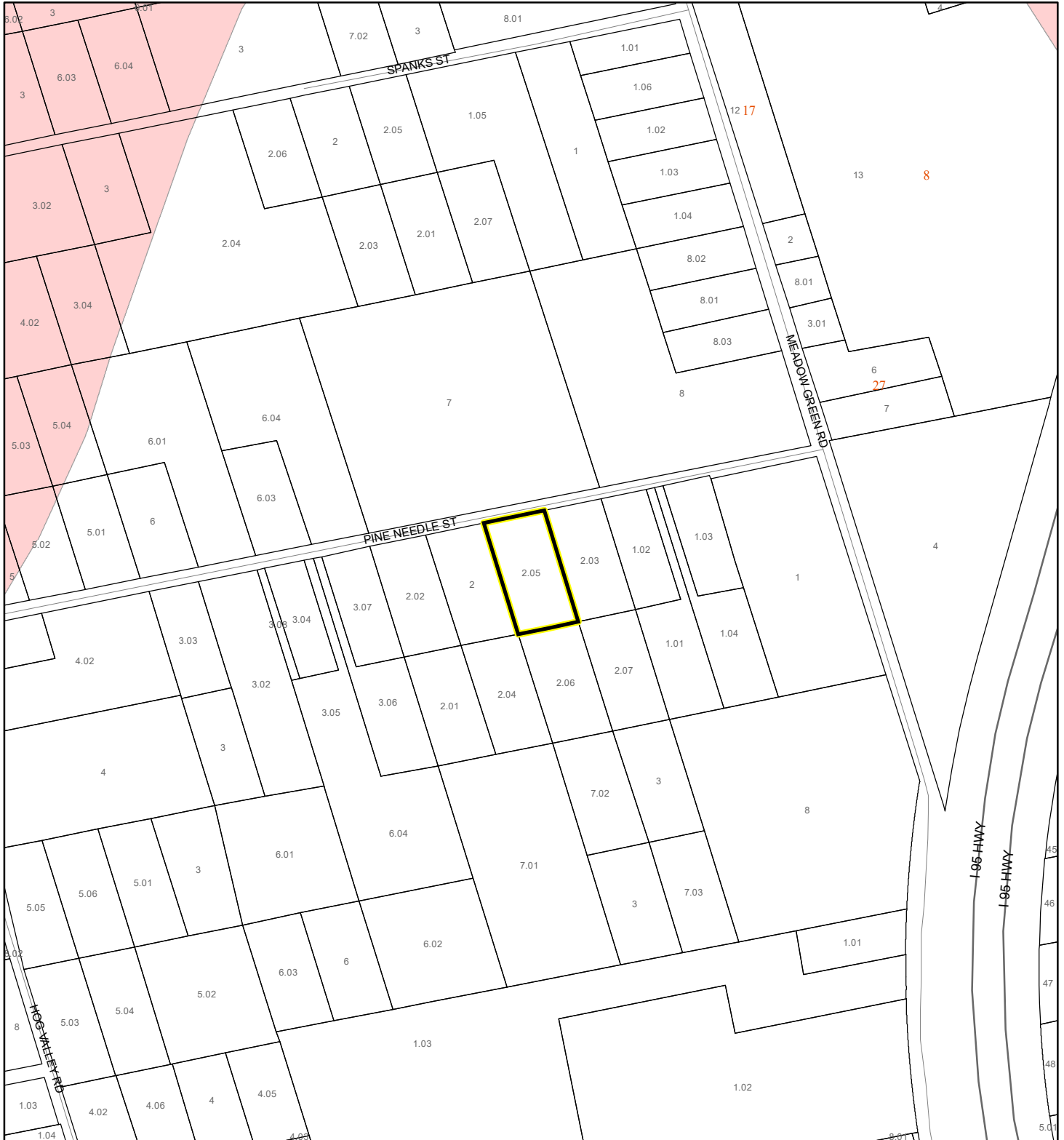
23Z00080



# FEMA FLOOD ZONES MAP

Pless, Travis & Rebecca

23Z00080



1:4,800 or 1 inch = 400 feet

This map was compiled from recorded documents and does not reflect an actual survey. The Brevard County Board of County Commissioners does not assume responsibility for errors or omissions hereon.

Produced by BoCC - GIS Date: 11/7/2023

## FEMA Flood Zones

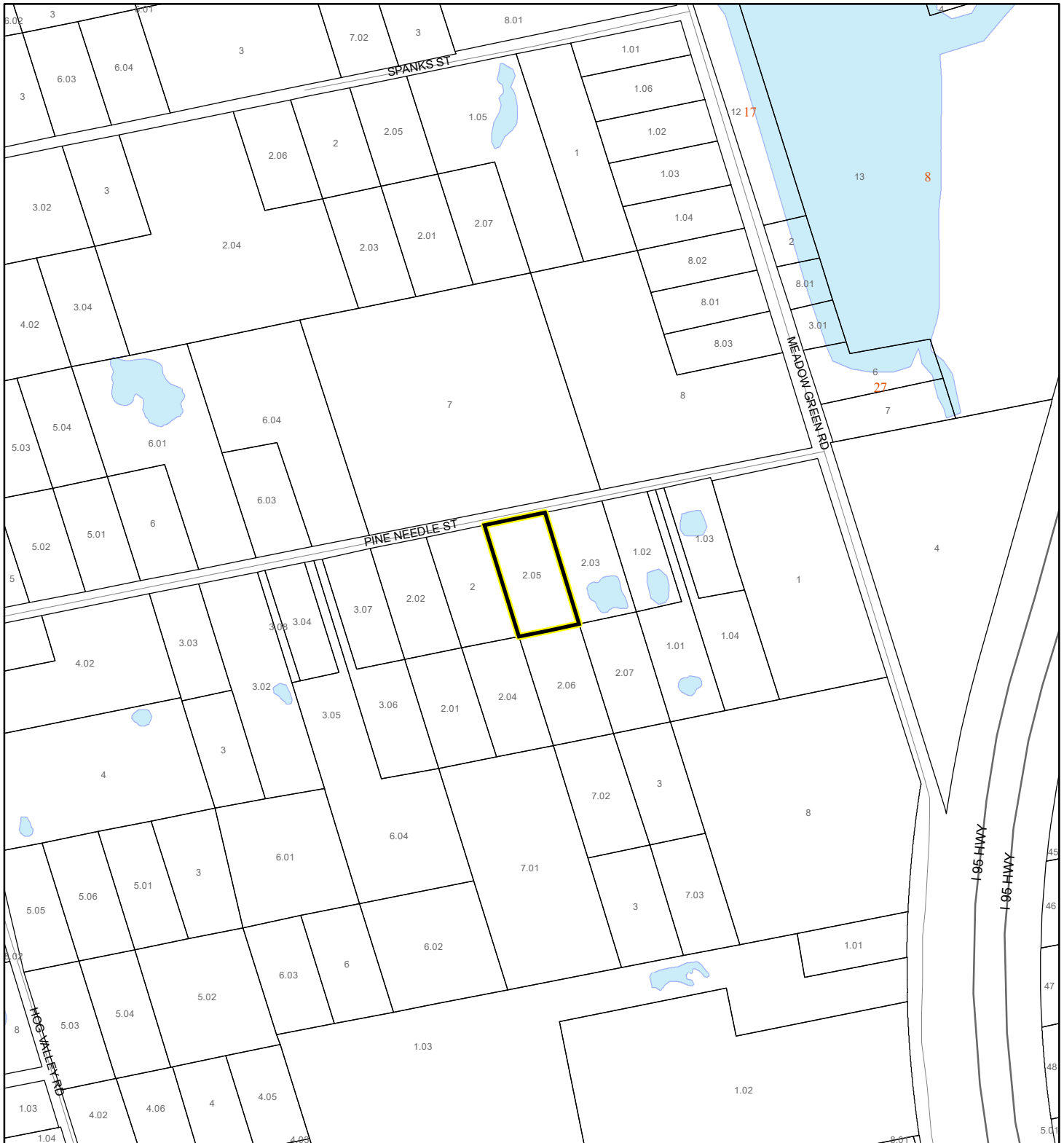
A	AO	X
AE	Open Water	
AH	VE	
Subject Property		Parcels



# COASTAL HIGH HAZARD AREA MAP

Pless, Travis & Rebecca

23Z00080



1:4,800 or 1 inch = 400 feet

This map was compiled from recorded documents and does not reflect an actual survey. The Brevard County Board of County Commissioners does not assume responsibility for errors or omissions hereon.

Produced by BoCC - GIS Date: 11/7/2023

 Subject Property

 Parcels

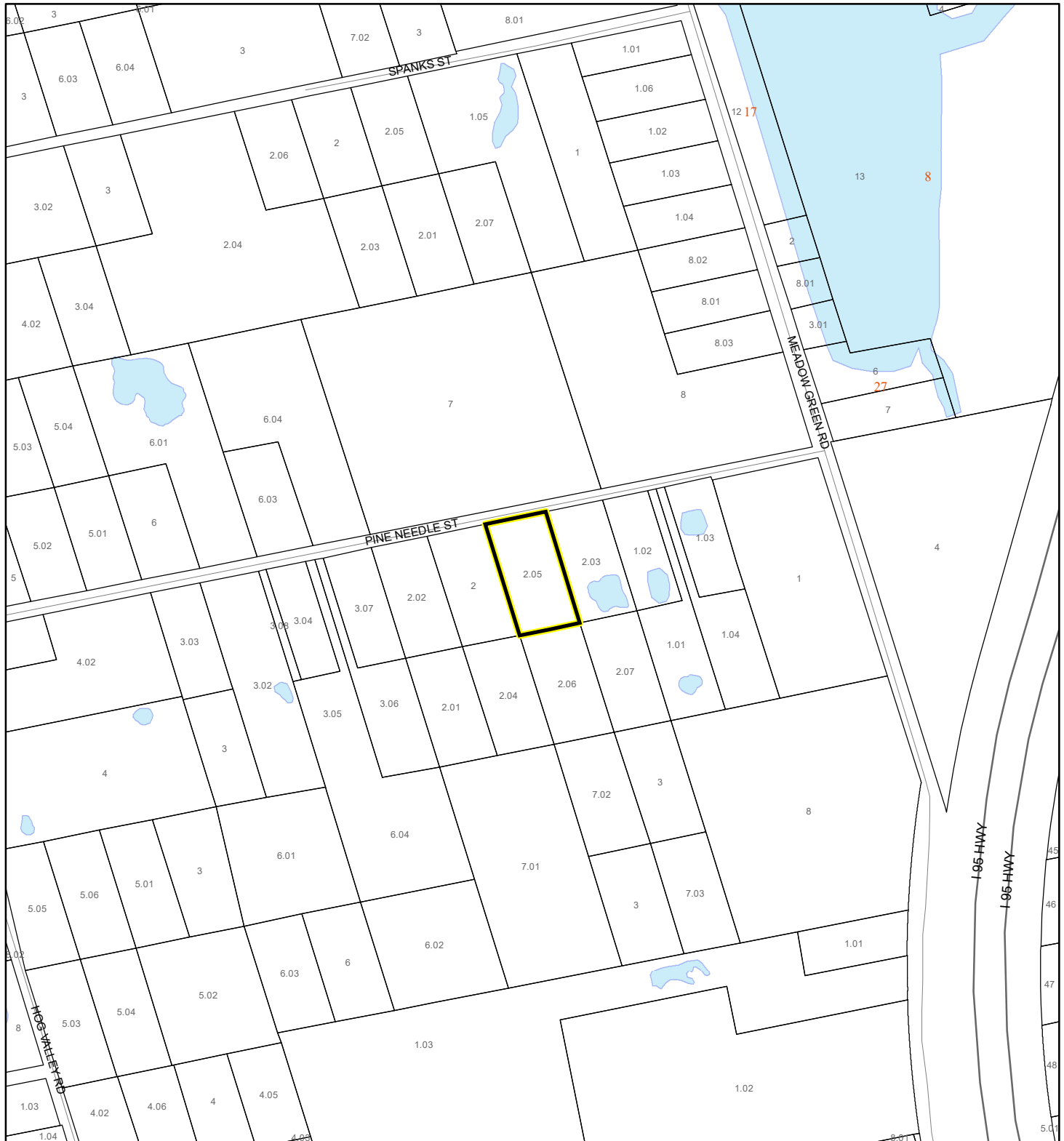
**Coastal High Hazard Area**

 SurgeZoneCat1

# INDIAN RIVER LAGOON SEPTIC OVERLAY MAP

Pless, Travis & Rebecca

23Z00080



1:4,800 or 1 inch = 400 feet

This map was compiled from recorded documents and does not reflect an actual survey. The Brevard County Board of County Commissioners does not assume responsibility for errors or omissions hereon.

Produced by BoCC - GIS Date: 11/7/2023

 Subject Property

 Parcels

**Septic Overlay**

 40 Meters

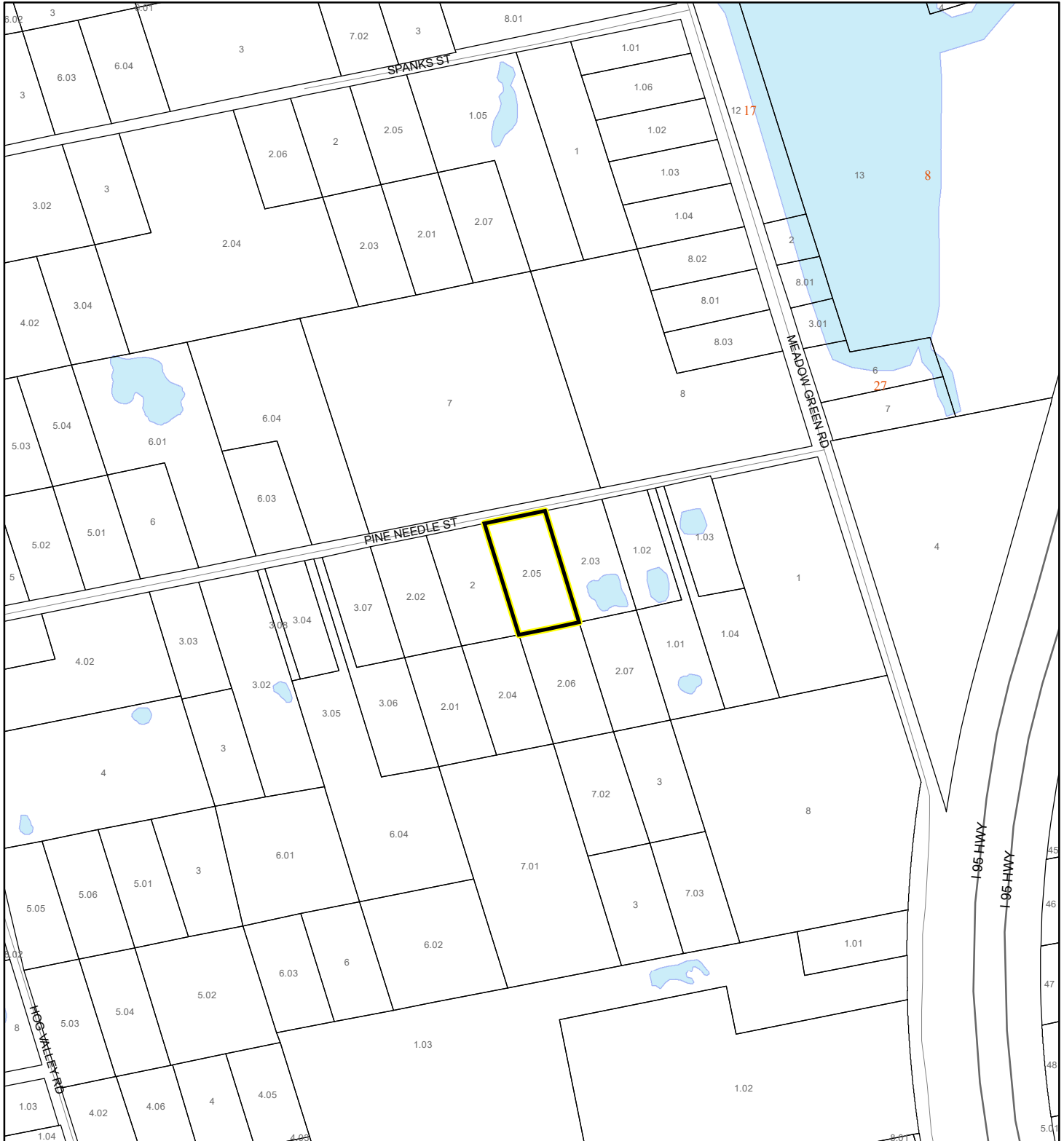
 60 Meters

 All Distances

# EAGLE NESTS MAP

Pless, Travis & Rebecca

23Z00080



1:4,800 or 1 inch = 400 feet

This map was compiled from recorded documents and does not reflect an actual survey. The Brevard County Board of County Commissioners does not assume responsibility for errors or omissions hereon.

Produced by BoCC - GIS Date: 11/7/2023

 Subject Property

 Parcels

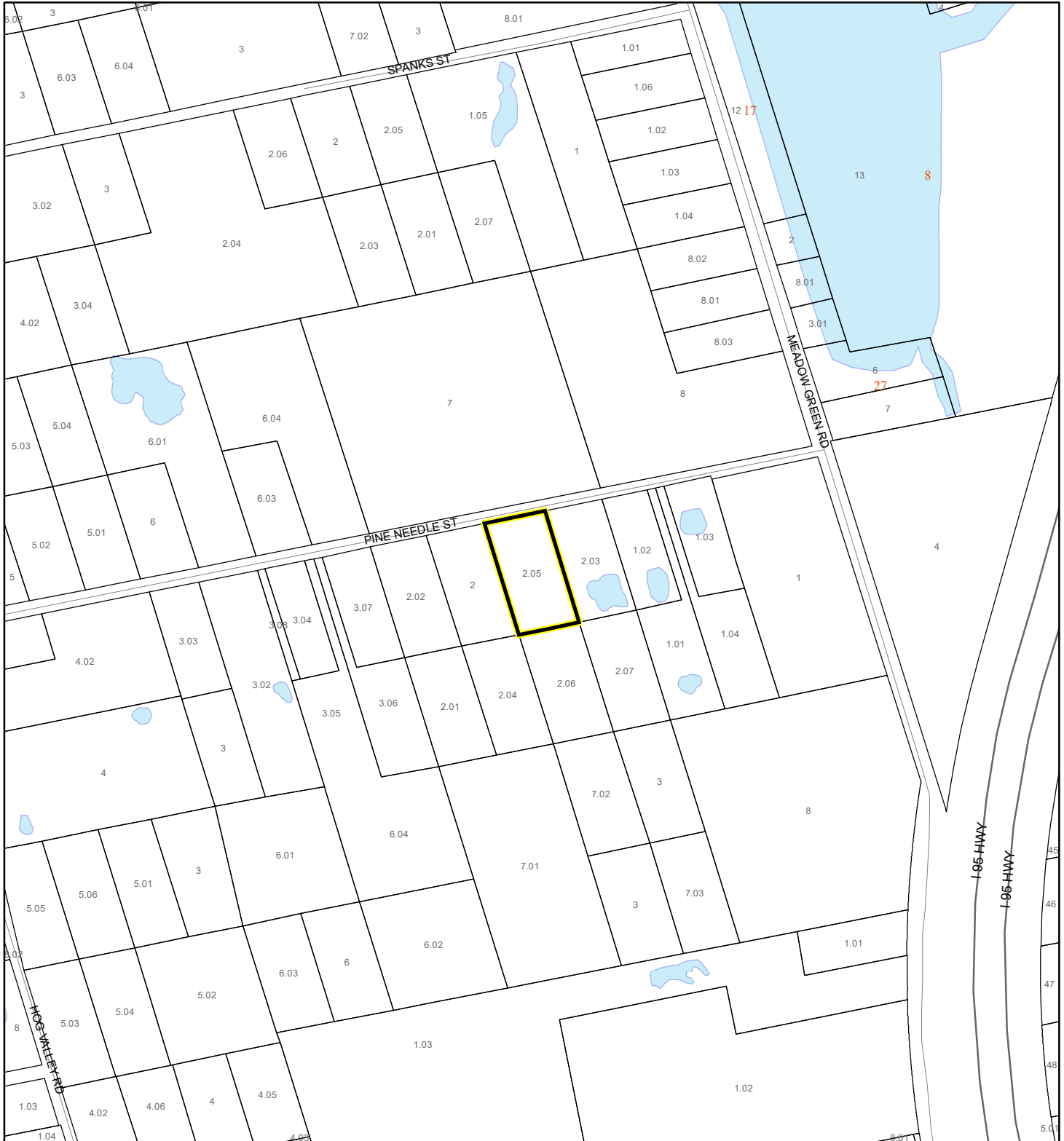
 Eagle Nests  
FWS



# SCRUB JAY OCCUPANCY MAP

Pless, Travis & Rebecca




23Z00080



1:4,800 or 1 inch = 400 feet

This map was compiled from recorded documents and does not reflect an actual survey. The Brevard County Board of County Commissioners does not assume responsibility for errors or omissions hereon.

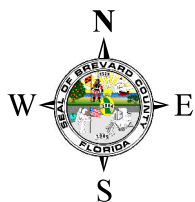
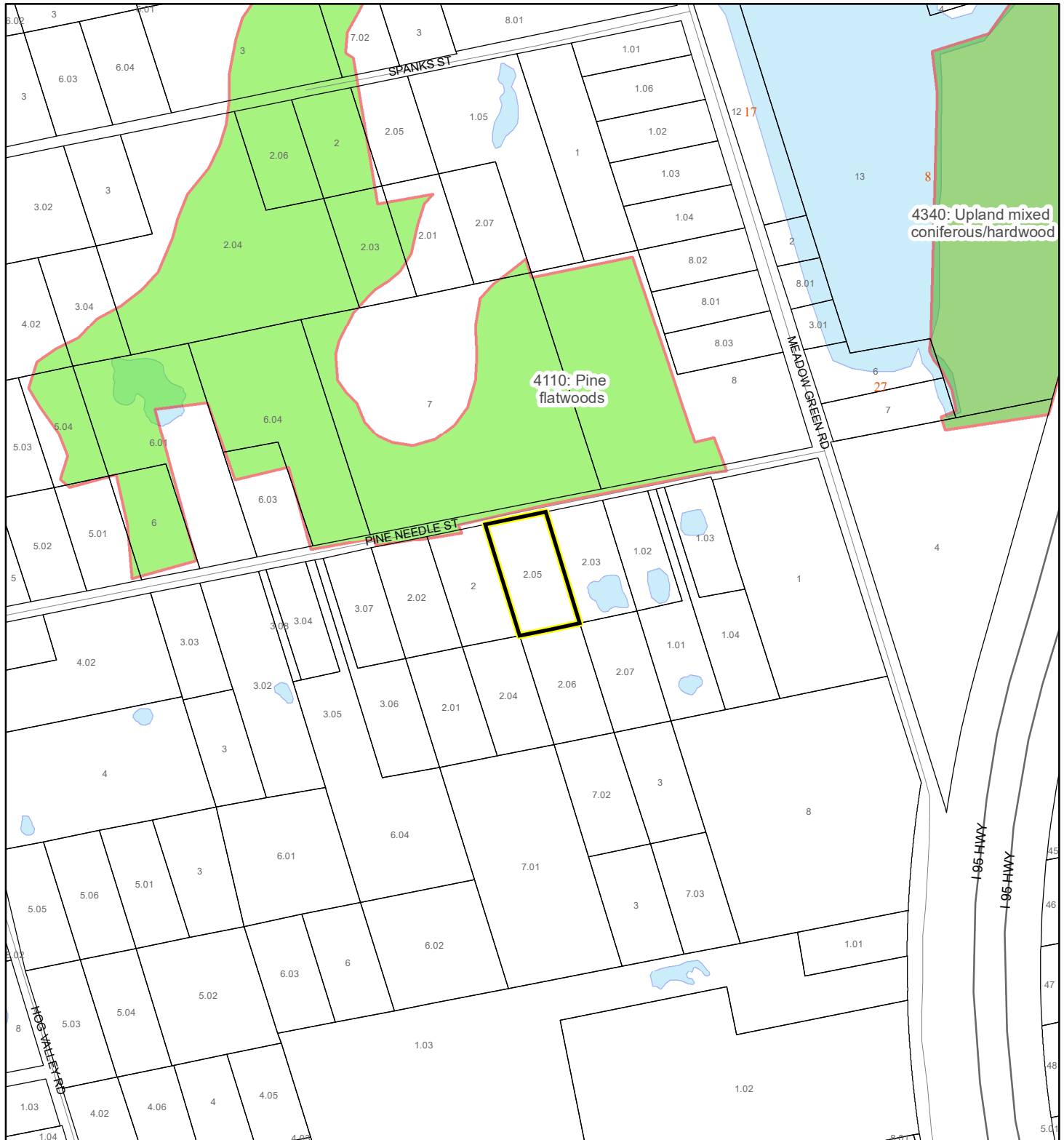
Produced by BoCC - GIS Date: 11/7/2023

-  Subject Property
-  Parcels
-  Scrub Jay Occupancy

# SJRWMD FLUCCS UPLAND FORESTS - 4000 Series MAP

Pless, Travis & Rebecca

23Z00080



1:4,800 or 1 inch = 400 feet

This map was compiled from recorded documents and does not reflect an actual survey. The Brevard County Board of County Commissioners does not assume responsibility for errors or omissions hereon.

Produced by BoCC - GIS Date: 11/7/2023

## SJRWMD FLUCCS Upland Forests

- Upland Coniferous Forest - 4100 Series
- Upland Hardwood Forest - 4200 Series
- Upland Mixed Forest - 4300 Series
- Tree Plantations - 4400 Series

Subject Property  Parcels