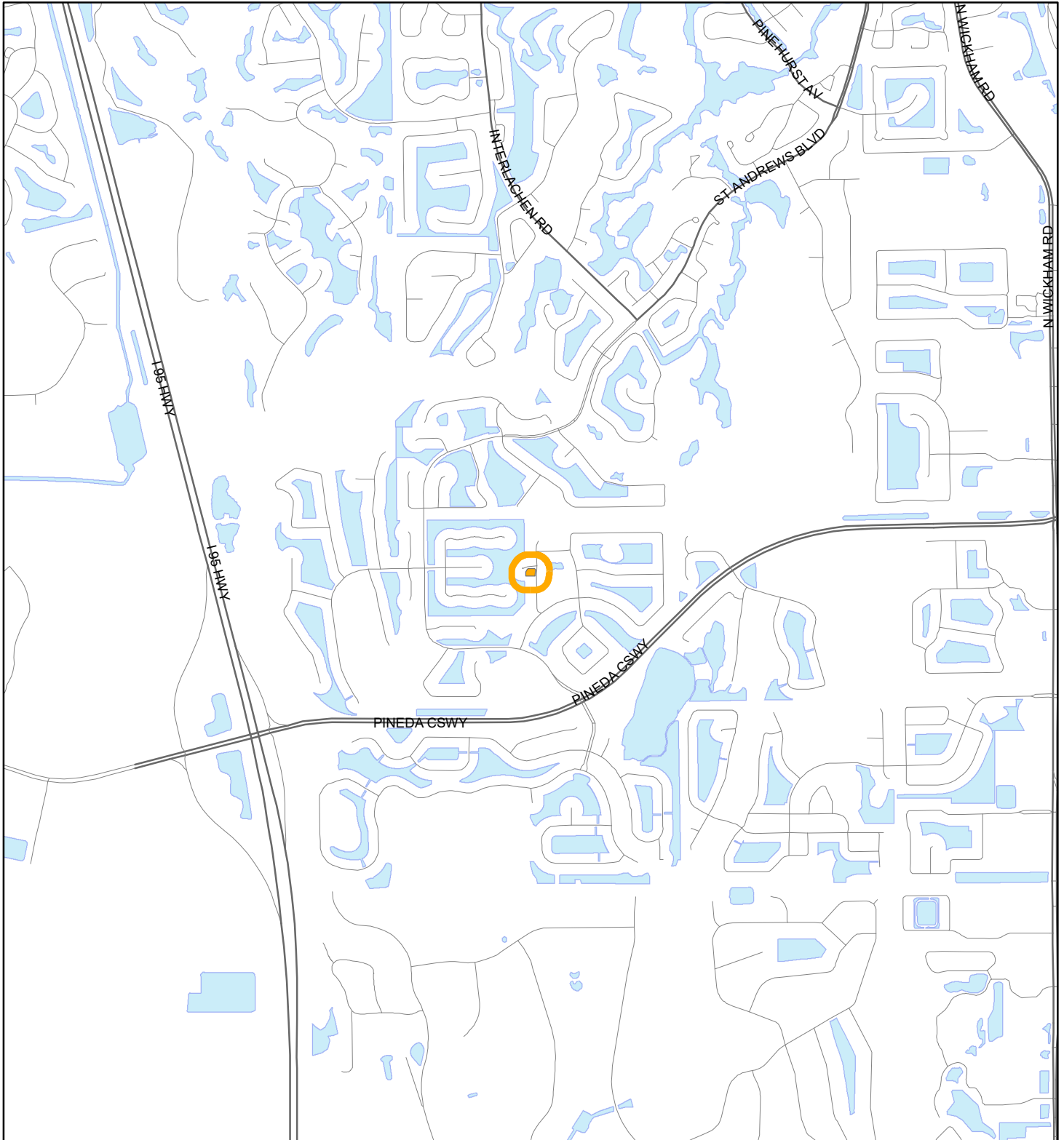


LOCATION MAP

HERNANDEZ, KENNY

25V00019



1:24,000 or 1 inch = 2,000 feet

Buffer Distance: 200 feet

This map was compiled from recorded documents and does not reflect an actual survey. The Brevard County Board of County Commissioners does not assume responsibility for errors or omissions hereon.

Produced by BoCC - GIS Date: 5/16/2025

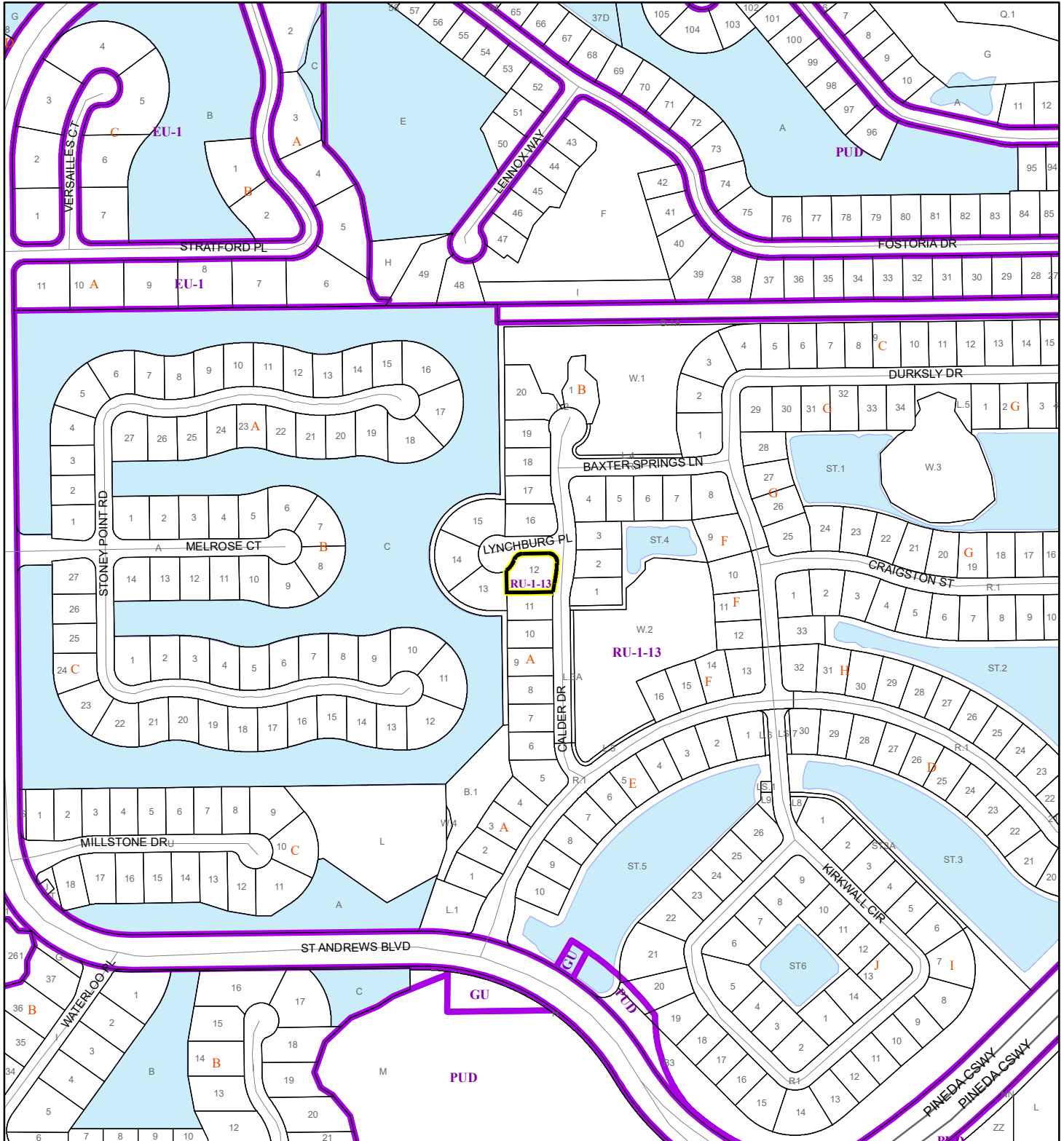
 Buffer

 Subject Property

ZONING MAP

HERNANDEZ, KENNY

25V00019



1:4,800 or 1 inch = 400 feet

This map was compiled from recorded documents and does not reflect an actual survey. The Brevard County Board of County Commissioners does not assume responsibility for errors or omissions hereon.

Produced by BoCC - GIS Date: 5/16/2025

Subject Property

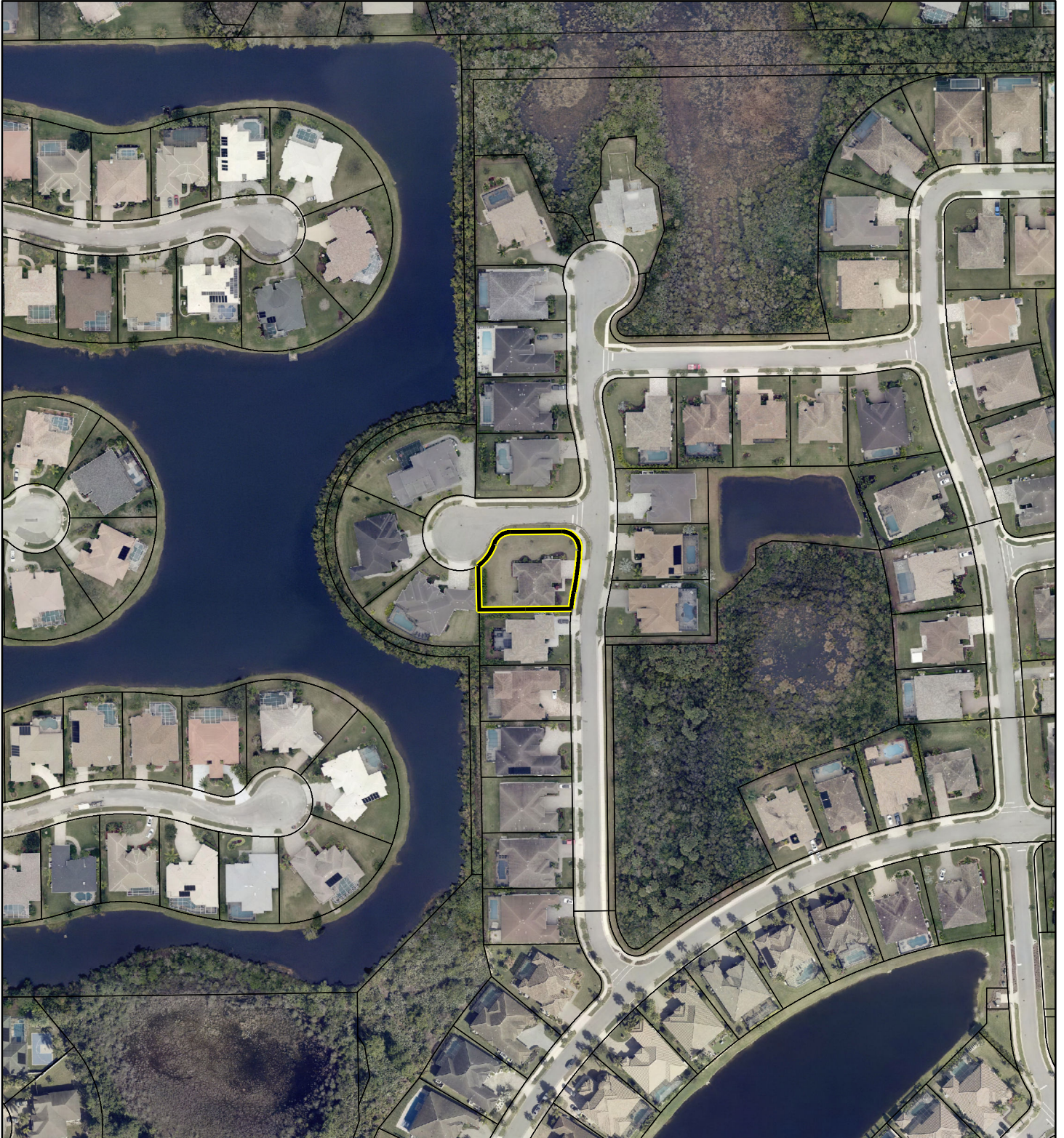
Parcels

Zoning

AERIAL MAP

HERNANDEZ, KENNY

25V00019



1:2,400 or 1 inch = 200 feet

PHOTO YEAR: 2024

This map was compiled from recorded documents and does not reflect an actual survey. The Brevard County Board of County Commissioners does not assume responsibility for errors or omissions hereon.

Produced by BoCC - GIS Date: 5/16/2025

 Subject Property

 Parcels