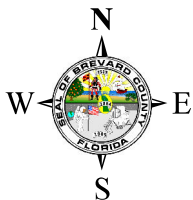
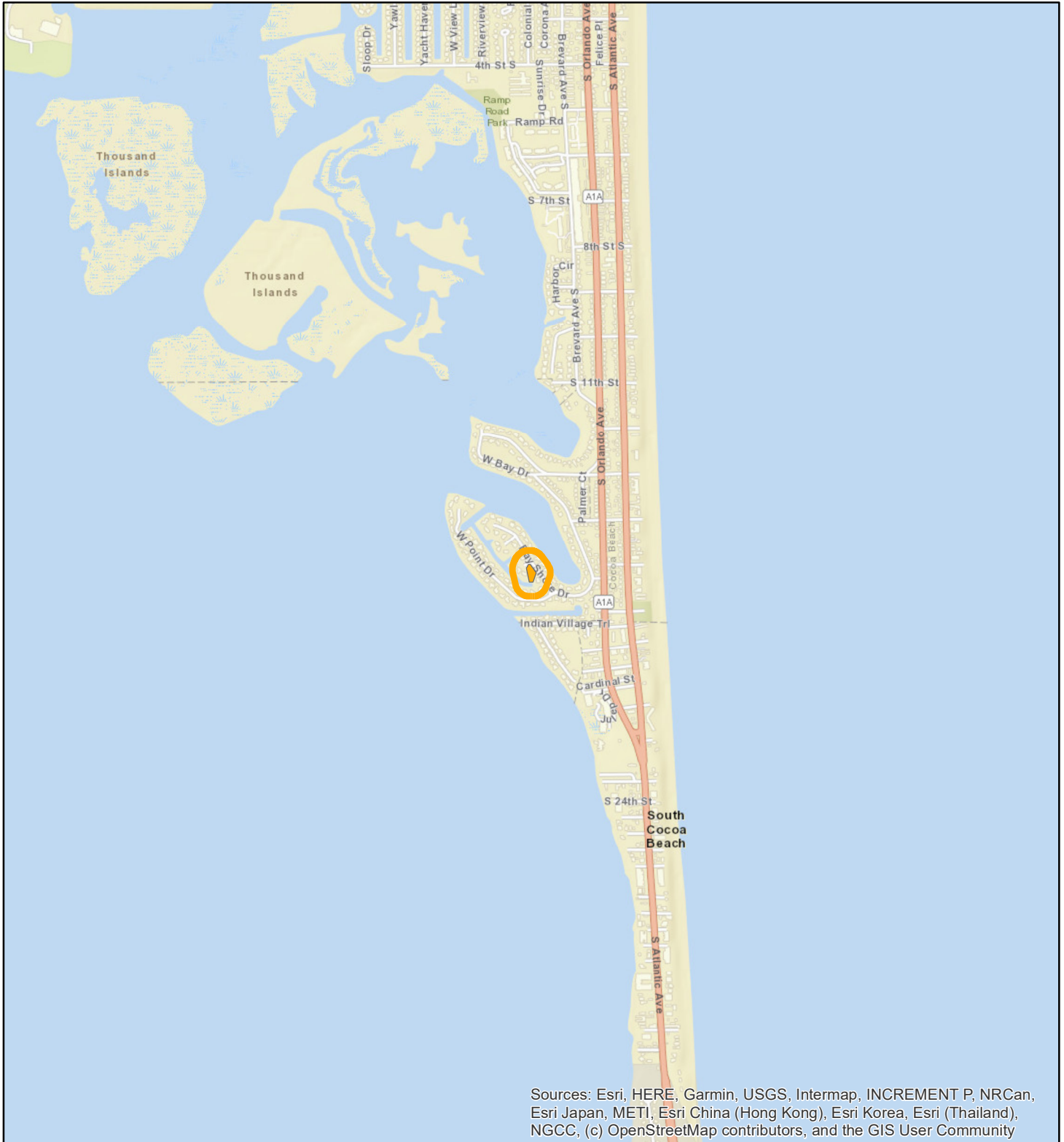


LOCATION MAP

LYNNE H TARA REVOCABLE TRUST

25V00090



1:24,000 or 1 inch = 2,000 feet

Buffer Distance: 200 feet

This map was compiled from recorded documents and does not reflect an actual survey. The Brevard County Board of County Commissioners does not assume responsibility for errors or omissions hereon.

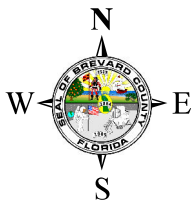
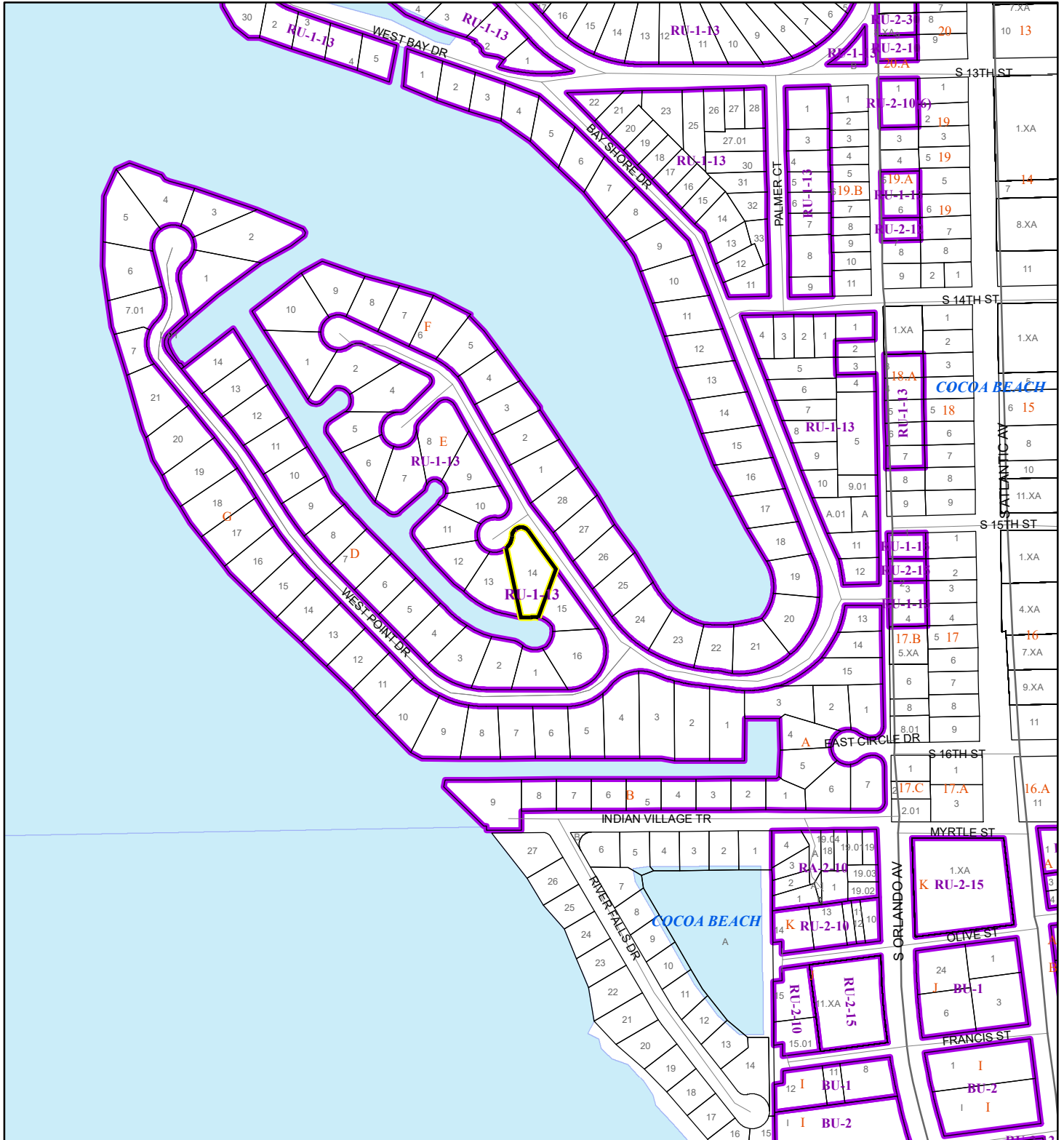
Produced by BoCC - GIS Date: 5/5/2026

- Buffer
- Subject Property

ZONING MAP

LYNNE H TARA REVOCABLE TRUST

25V00090



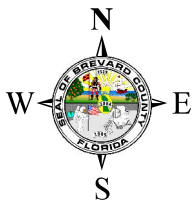
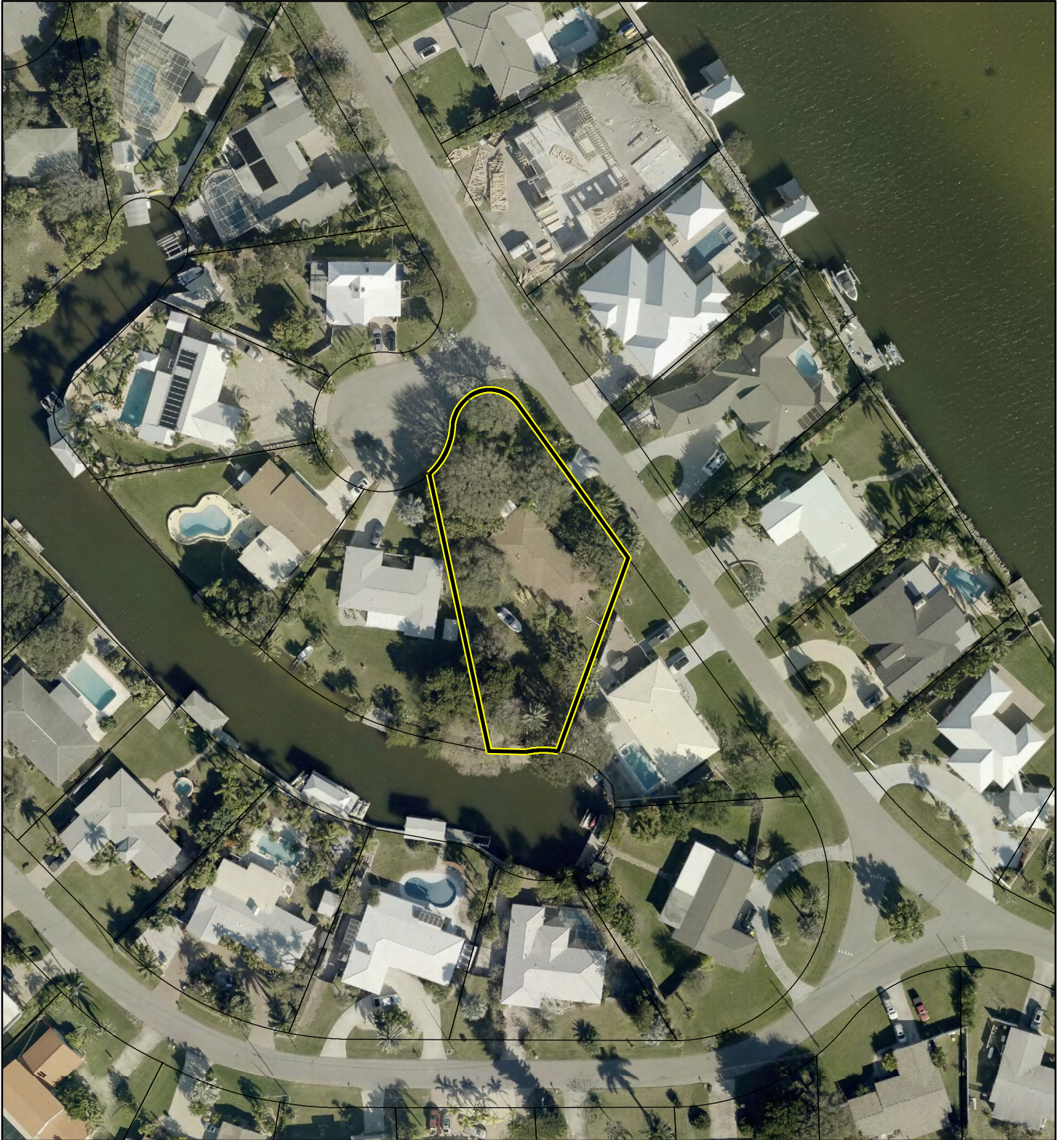
1:4,800 or 1 inch = 400 feet

This map was compiled from recorded documents and does not reflect an actual survey. The Brevard County Board of County Commissioners does not assume responsibility for errors or omissions hereon.

Produced by BoCC - GIS Date: 5/5/2026

- Subject Property
- Parcels
- Zoning

AERIAL MAP
LYNNE H TARA REVOCABLE TRUST
25V00090




1:1,200 or 1 inch = 100 feet

PHOTO YEAR: 2026

This map was compiled from recorded documents and does not reflect an actual survey. The Brevard County Board of County Commissioners does not assume responsibility for errors or omissions hereon.

Produced by BoCC - GIS Date: 5/5/2026

 Subject Property

 Parcels