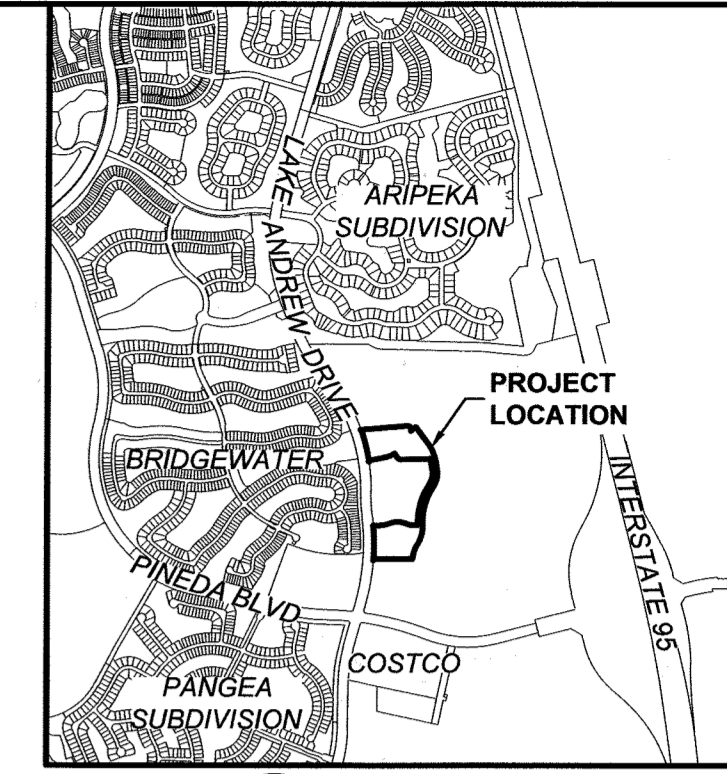


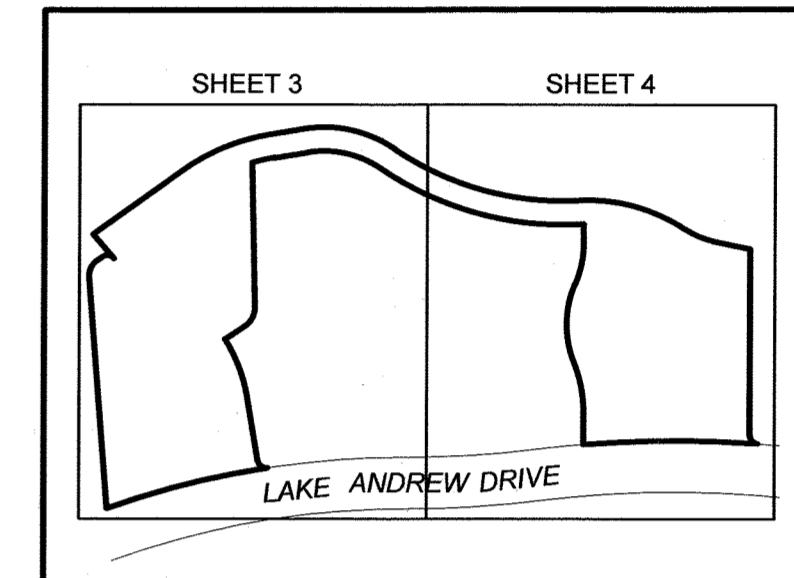


# VILLAGE 2 NEIGHBORHOOD 2

## SECTION 27, TOWNSHIP 26 SOUTH, RANGE 36 EAST, BREVARD COUNTY, FLORIDA

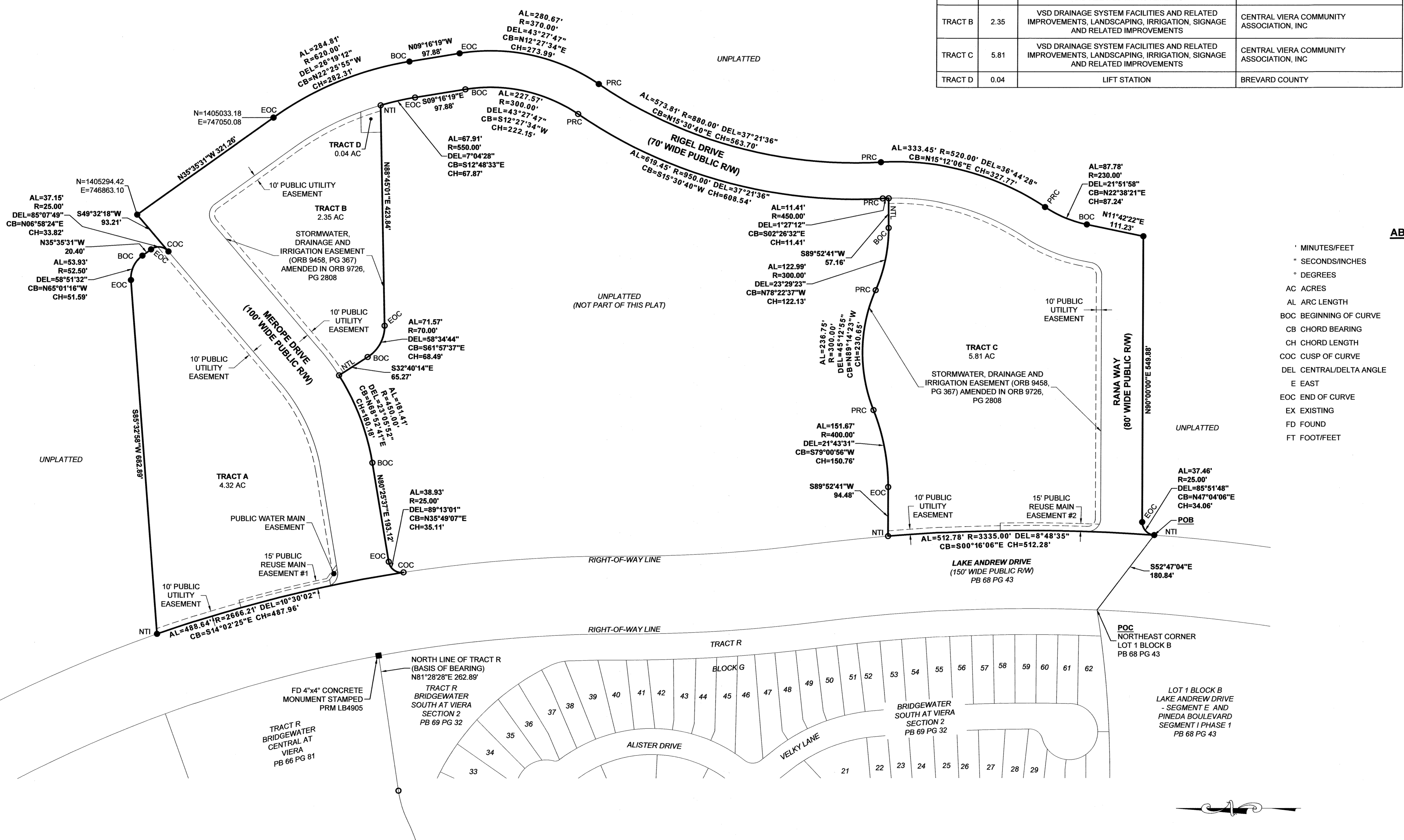


LOCATION MAP  
NOT TO SCALE



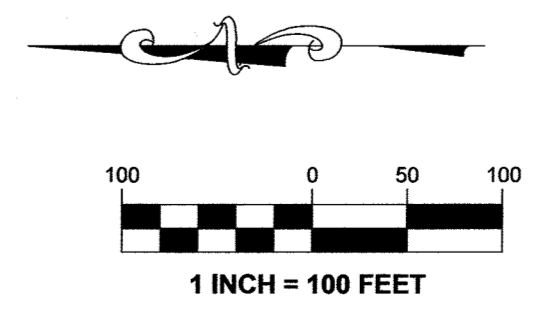
KEY MAP  
NOT TO SCALE

TRACT AREA SUMMARY TABLE			
TRACT	AREA (ACRES)	TRACT USE	OWNERSHIP AND MAINTENANCE ENTITY
TRACT A	4.32	VSD DRAINAGE SYSTEM FACILITIES AND RELATED IMPROVEMENTS, LANDSCAPING, IRRIGATION, SIGNAGE AND RELATED IMPROVEMENTS	CENTRAL VIERA COMMUNITY ASSOCIATION, INC
TRACT B	2.35	VSD DRAINAGE SYSTEM FACILITIES AND RELATED IMPROVEMENTS, LANDSCAPING, IRRIGATION, SIGNAGE AND RELATED IMPROVEMENTS	CENTRAL VIERA COMMUNITY ASSOCIATION, INC
TRACT C	5.81	VSD DRAINAGE SYSTEM FACILITIES AND RELATED IMPROVEMENTS, LANDSCAPING, IRRIGATION, SIGNAGE AND RELATED IMPROVEMENTS	CENTRAL VIERA COMMUNITY ASSOCIATION, INC
TRACT D	0.04	LIFT STATION	BREVARD COUNTY



- ABBREVIATIONS**
- ' MINUTES/FEET
  - " SECONDS/INCHES
  - ° DEGREES
  - AC ACRES
  - AL ARC LENGTH
  - BOC BEGINNING OF CURVE
  - CB CHORD BEARING
  - CH CHORD LENGTH
  - COC CUSP OF CURVE
  - DEL CENTRAL/DELTA ANGLE
  - E EAST
  - EOC END OF CURVE
  - EX EXISTING
  - FD FOUND
  - FT FOOT/FEET
  - N NORTH
  - NR NON-RADIAL
  - NTI NON-TANGENT INTERSECTION
  - NTL NON-TANGENT LINE
  - OR/ORB OFFICIAL RECORDS BOOK
  - PB PLAT BOOK
  - PCC POINT OF COMPOUND CURVATURE
  - POB POINT OF BEGINNING
  - POC POINT OF COMMENCEMENT
  - PRC POINT OF REVERSE CURVATURE
  - R RADIUS
  - R/W RIGHT-OF-WAY
  - TYP TYPICAL
  - VSD VIERA STEWARDSHIP DISTRICT

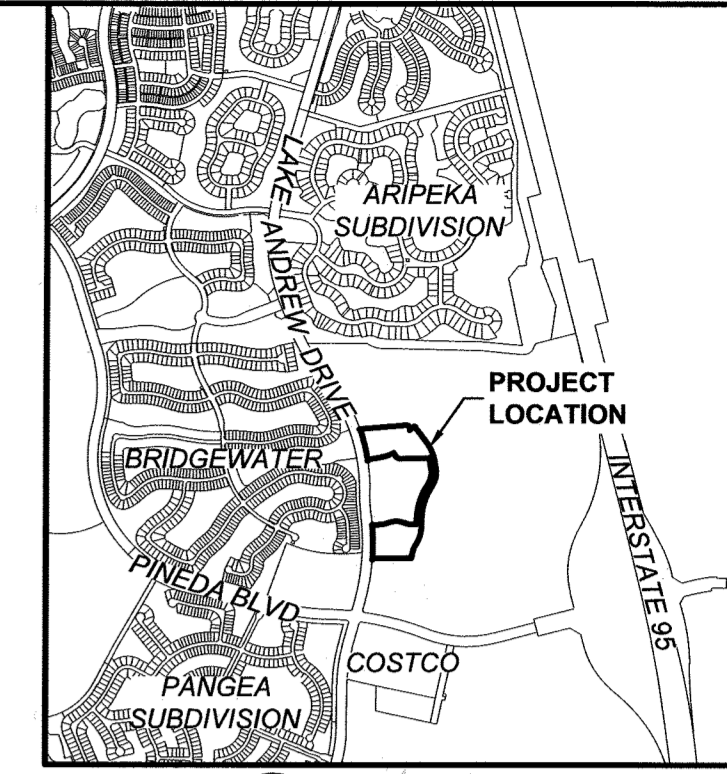
- SURVEY SYMBOL LEGEND**
- PERMANENT REFERENCE MONUMENT (PRM); SET 4X4 INCH CONCRETE MONUMENT WITH DISK STAMPED PRM LB4905, UNLESS OTHERWISE NOTED
  - ▲ PERMANENT CONTROL POINT (PCP); SET MAG NAIL AND DISK STAMPED PCP LB4905, UNLESS OTHERWISE NOTED
  - SET 5/8" IRON ROD AND CAP STAMPED "PRM LB4905" UNLESS OTHERWISE NOTED
  - FD 5/8" IRON ROD AND CAP STAMPED "PRM LB4905" UNLESS OTHERWISE NOTED



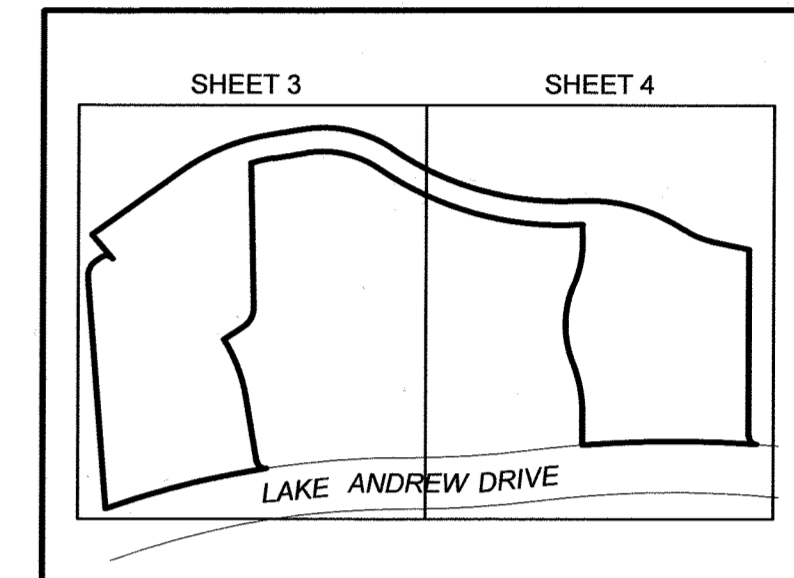
H:\Projects\1159802\_300\_001.dwg February 28, 2023 9:52:53 AM WV

# VILLAGE 2 NEIGHBORHOOD 2

## SECTION 27, TOWNSHIP 26 SOUTH, RANGE 36 EAST, BREVARD COUNTY, FLORIDA



LOCATION MAP  
NOT TO SCALE



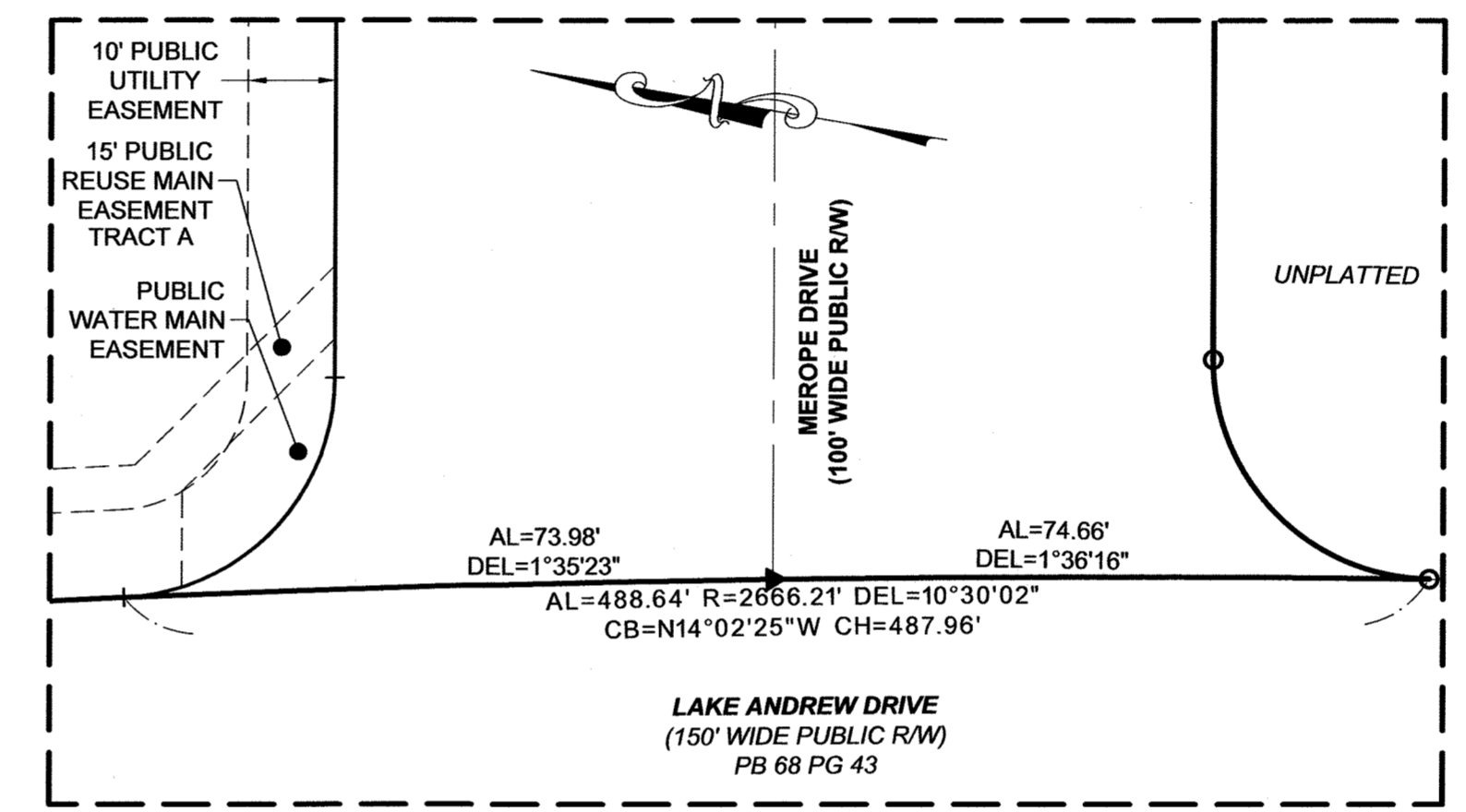
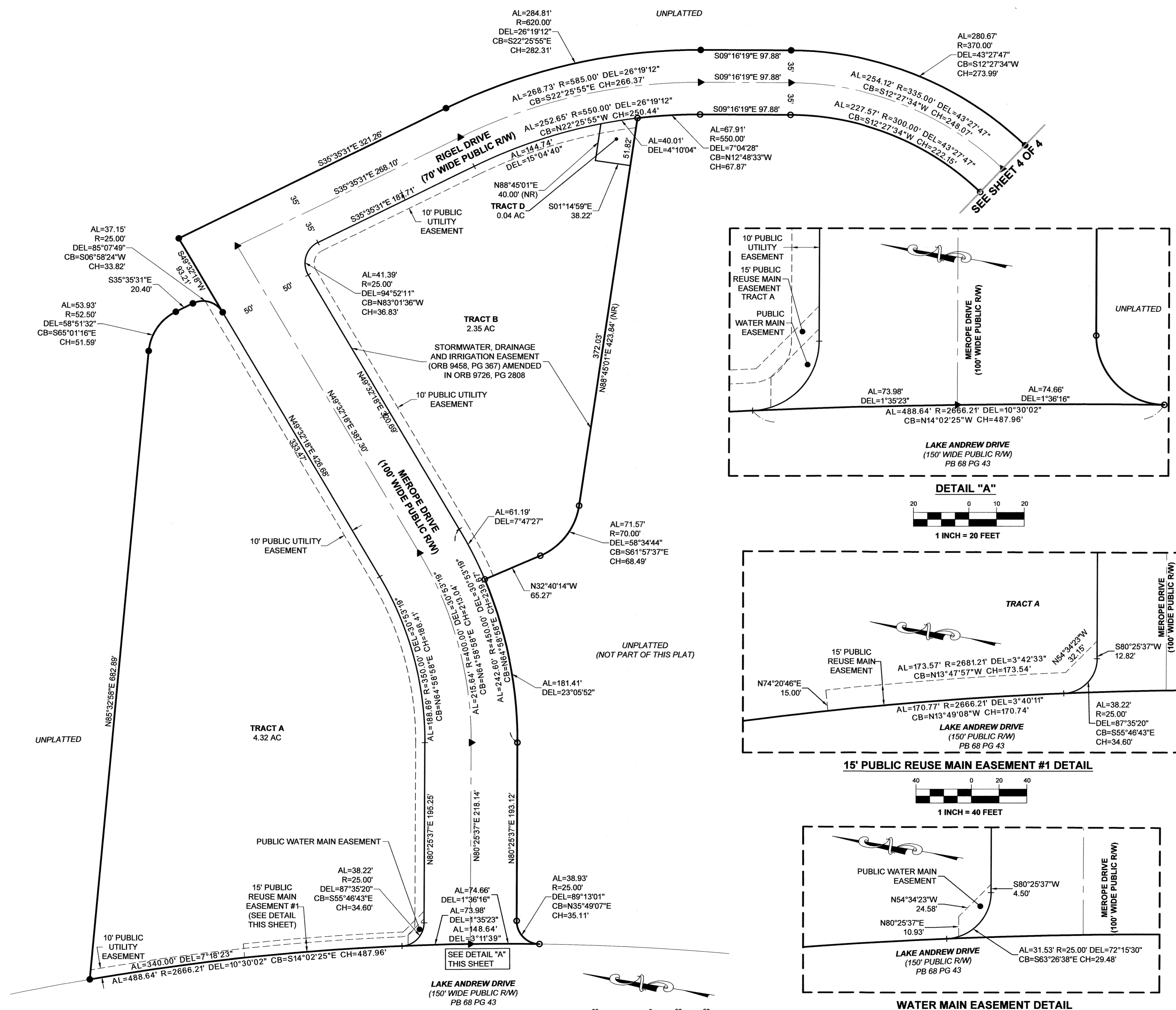
KEY MAP  
NOT TO SCALE

### SURVEY SYMBOL LEGEND

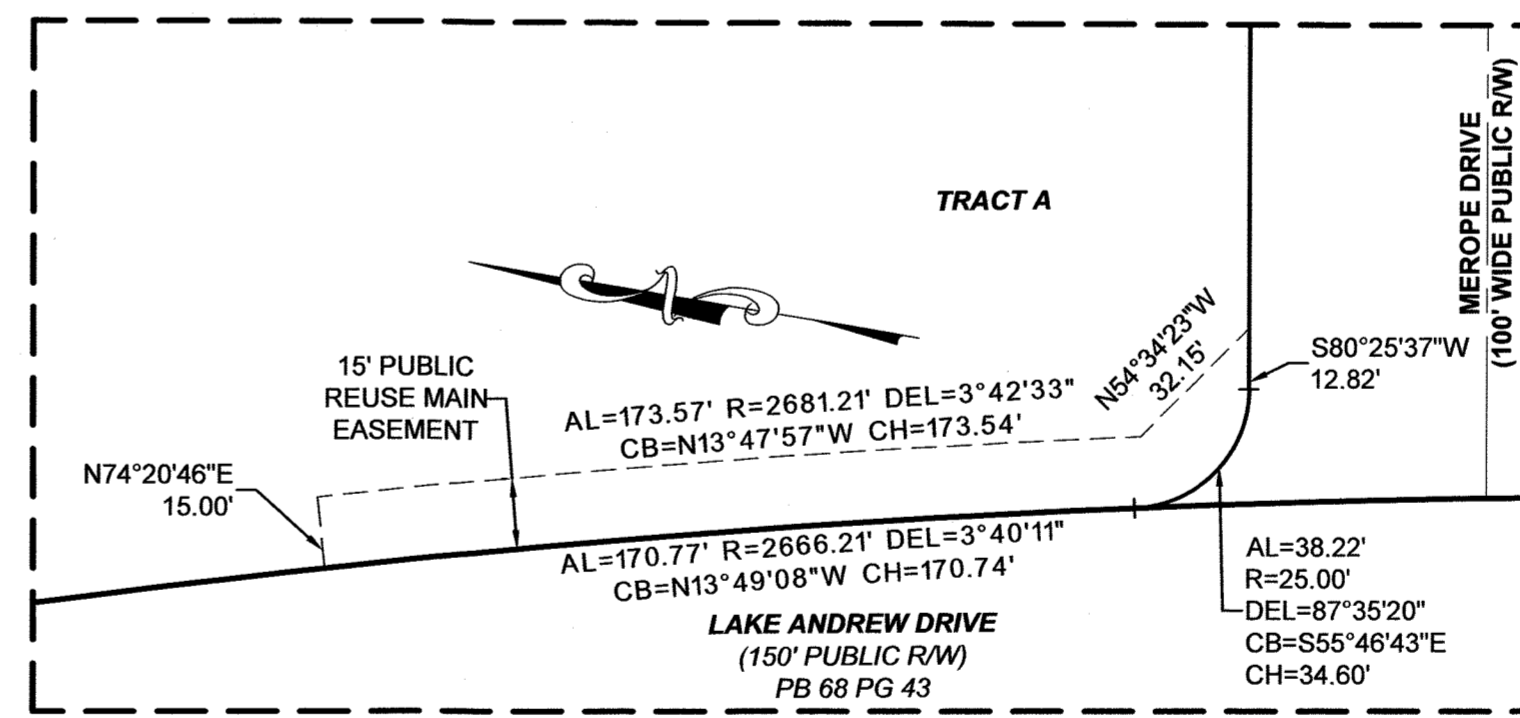
- PERMANENT REFERENCE MONUMENT (PRM); SET 4X4 INCH CONCRETE MONUMENT WITH DISK STAMPED PRM LB4905, UNLESS OTHERWISE NOTED
- ▲ PERMANENT CONTROL POINT (PCP); SET MAG NAIL AND DISK STAMPED PCP LB4905, UNLESS OTHERWISE NOTED
- SET 5/8" IRON ROD AND CAP STAMPED "PRM LB4905" UNLESS OTHERWISE NOTED
- FD 5/8" IRON ROD AND CAP STAMPED "PRM LB4905" UNLESS OTHERWISE NOTED

### ABBREVIATIONS

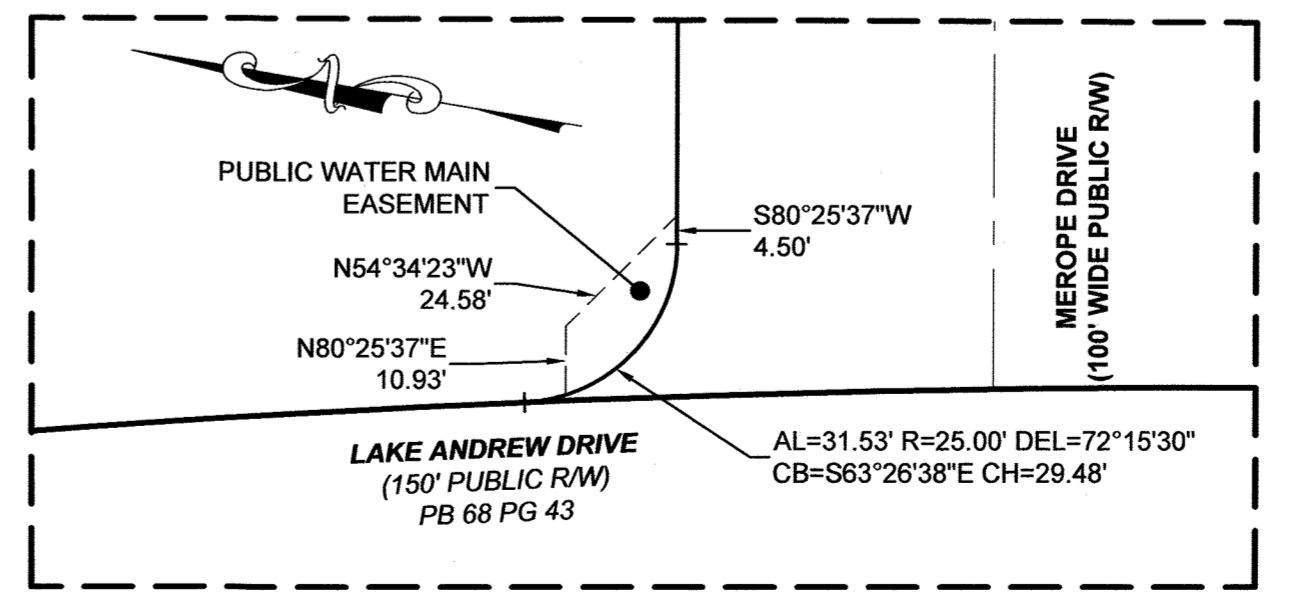
- ' MINUTES/FEET
- " SECONDS/INCHES
- ° DEGREES
- AC ACRES
- AL ARC LENGTH
- BOC BEGINNING OF CURVE
- CB CHORD BEARING
- CH CHORD LENGTH
- COC CUSP OF CURVE
- DEL CENTRAL/DELTA ANGLE
- E EAST
- EOC END OF CURVE
- EX EXISTING
- FD FOUND
- FT FOOT/FEET
- N NORTH
- NR NON-RADIAL
- NTI NON-TANGENT INTERSECTION
- NTL NON-TANGENT LINE
- OR/ORB OFFICIAL RECORDS BOOK
- PB PLAT BOOK
- PCP POINT OF COMPOUND CURVATURE
- PG(S) PAGE(S)
- POB POINT OF BEGINNING
- POC POINT OF COMMENCEMENT
- PRC POINT OF REVERSE CURVATURE
- R RADIUS
- R/W RIGHT-OF-WAY
- TYP TYPICAL
- VSD VIERA STEWARDSHIP DISTRICT



DETAIL "A"  
1 INCH = 20 FEET



15' PUBLIC REUSE MAIN EASEMENT #1 DETAIL  
1 INCH = 40 FEET

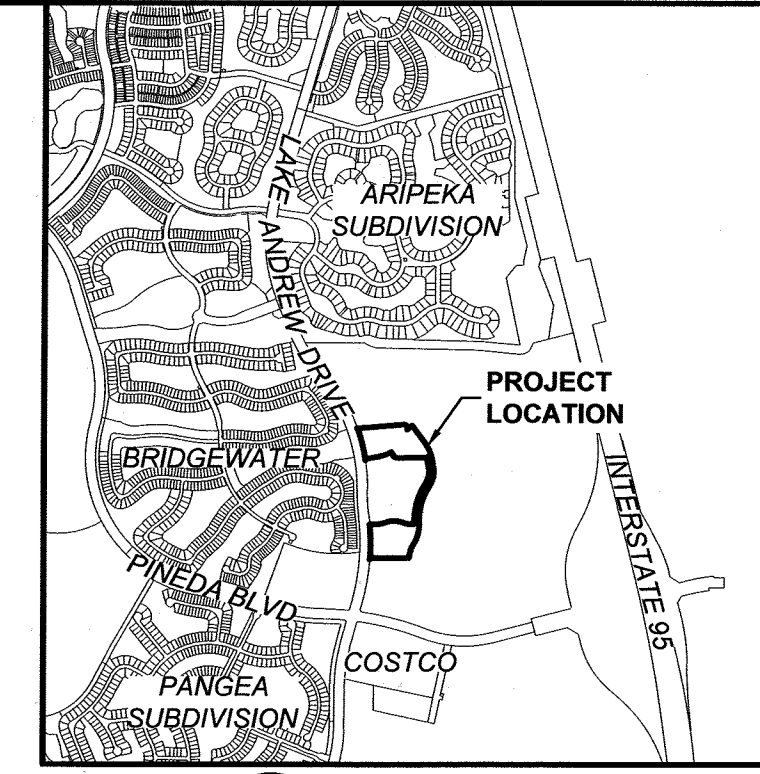


WATER MAIN EASEMENT DETAIL  
1 INCH = 30 FEET

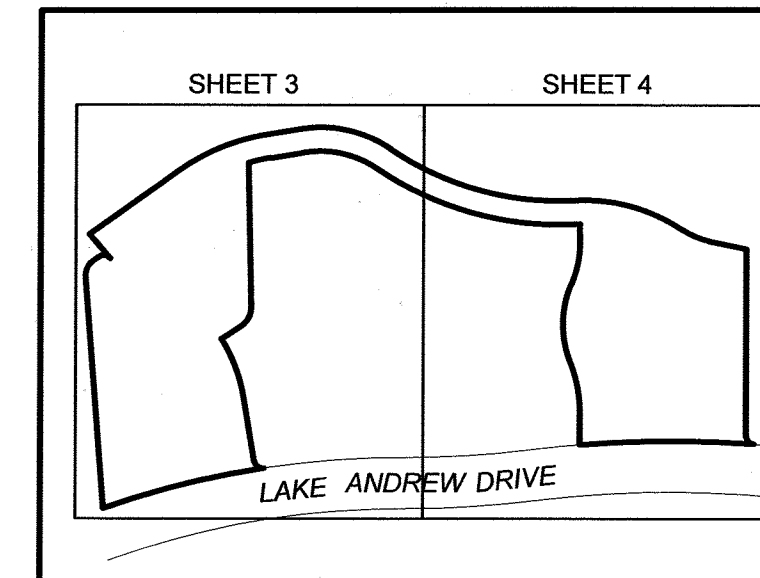
H:\Projects\1159802\_300\1159802\_300.dwg  
 2/28/23 9:24:03 AM  
 H:\Projects\1159802\_300\1159802\_300.dwg  
 2/28/23 9:24:03 AM

# VILLAGE 2 NEIGHBORHOOD 2

## SECTION 27, TOWNSHIP 26 SOUTH, RANGE 36 EAST, BREVARD COUNTY, FLORIDA



LOCATION MAP  
NOT TO SCALE



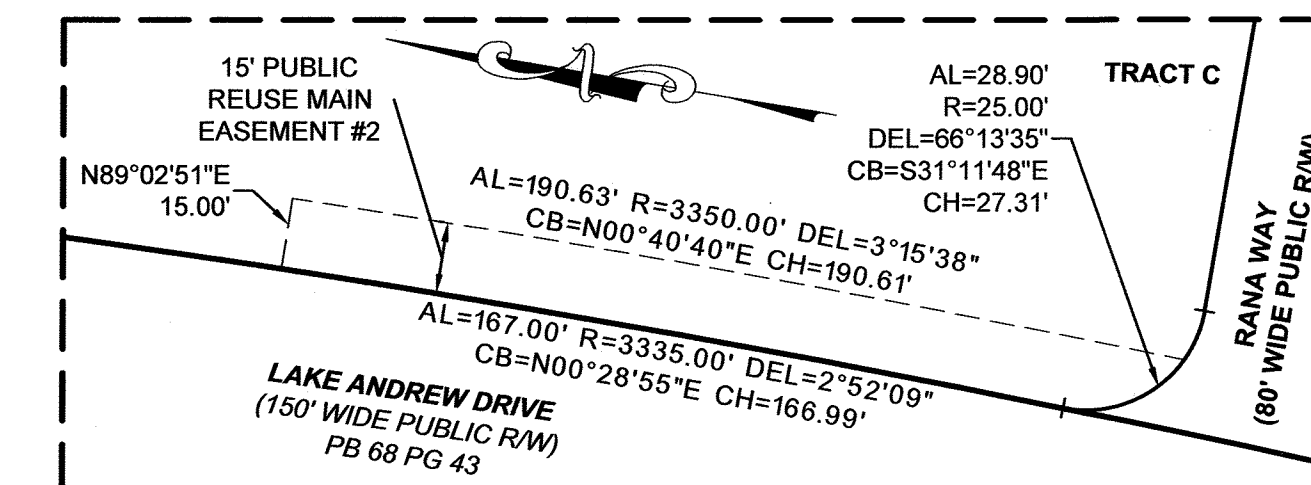
KEY MAP  
NOT TO SCALE

### SURVEY SYMBOL LEGEND

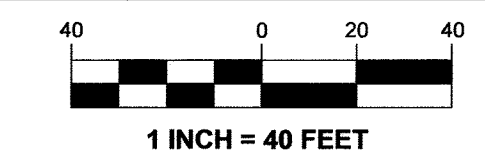
- PERMANENT REFERENCE MONUMENT (PRM); SET 4X4 INCH CONCRETE MONUMENT WITH DISK STAMPED PRM LB4905, UNLESS OTHERWISE NOTED
- ▲ PERMANENT CONTROL POINT (PCP); SET MAG NAIL AND DISK STAMPED PCP LB4905, UNLESS OTHERWISE NOTED
- SET 5/8" IRON ROD AND CAP STAMPED "PRM LB4905" UNLESS OTHERWISE NOTED
- FD 5/8" IRON ROD AND CAP STAMPED "PRM LB4905" UNLESS OTHERWISE NOTED

### ABBREVIATIONS

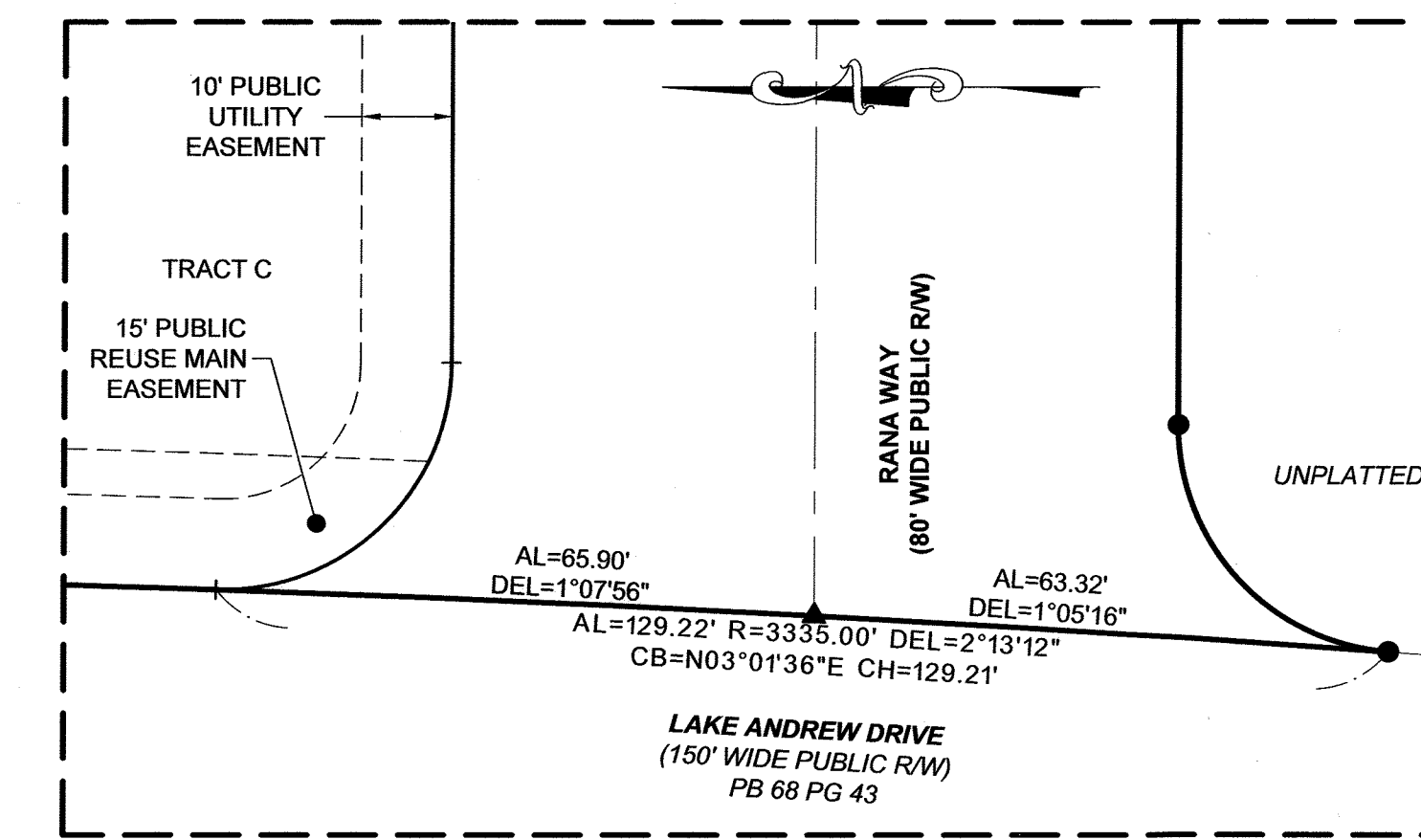
- |                         |                                 |
|-------------------------|---------------------------------|
| ' MINUTES/FEET          | N NORTH                         |
| " SECONDS/INCHES        | NR NON-RADIAL                   |
| ° DEGREES               | NTI NON-TANGENT INTERSECTION    |
| AC ACRES                | NTL NON-TANGENT LINE            |
| AL ARC LENGTH           | OR/ORB OFFICIAL RECORDS BOOK    |
| BOC BEGINNING OF CURVE  | PB PLAT BOOK                    |
| CB CHORD BEARING        | PCC POINT OF COMPOUND CURVATURE |
| CH CHORD LENGTH         | PG(S) PAGE(S)                   |
| COC CUSP OF CURVE       | POB POINT OF BEGINNING          |
| DEL CENTRAL/DELTA ANGLE | POC POINT OF COMMENCEMENT       |
| E EAST                  | PRC POINT OF REVERSE CURVATURE  |
| EOC END OF CURVE        | R RADIUS                        |
| EX EXISTING             | R/W RIGHT-OF-WAY                |
| FD FOUND                | TYP TYPICAL                     |
| FT FOOT/FEET            | VSD VIERA STEWARDSHIP DISTRICT  |



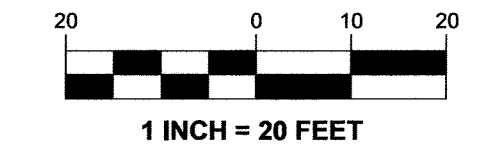
15' PUBLIC REUSE MAIN EASEMENT #2 DETAIL



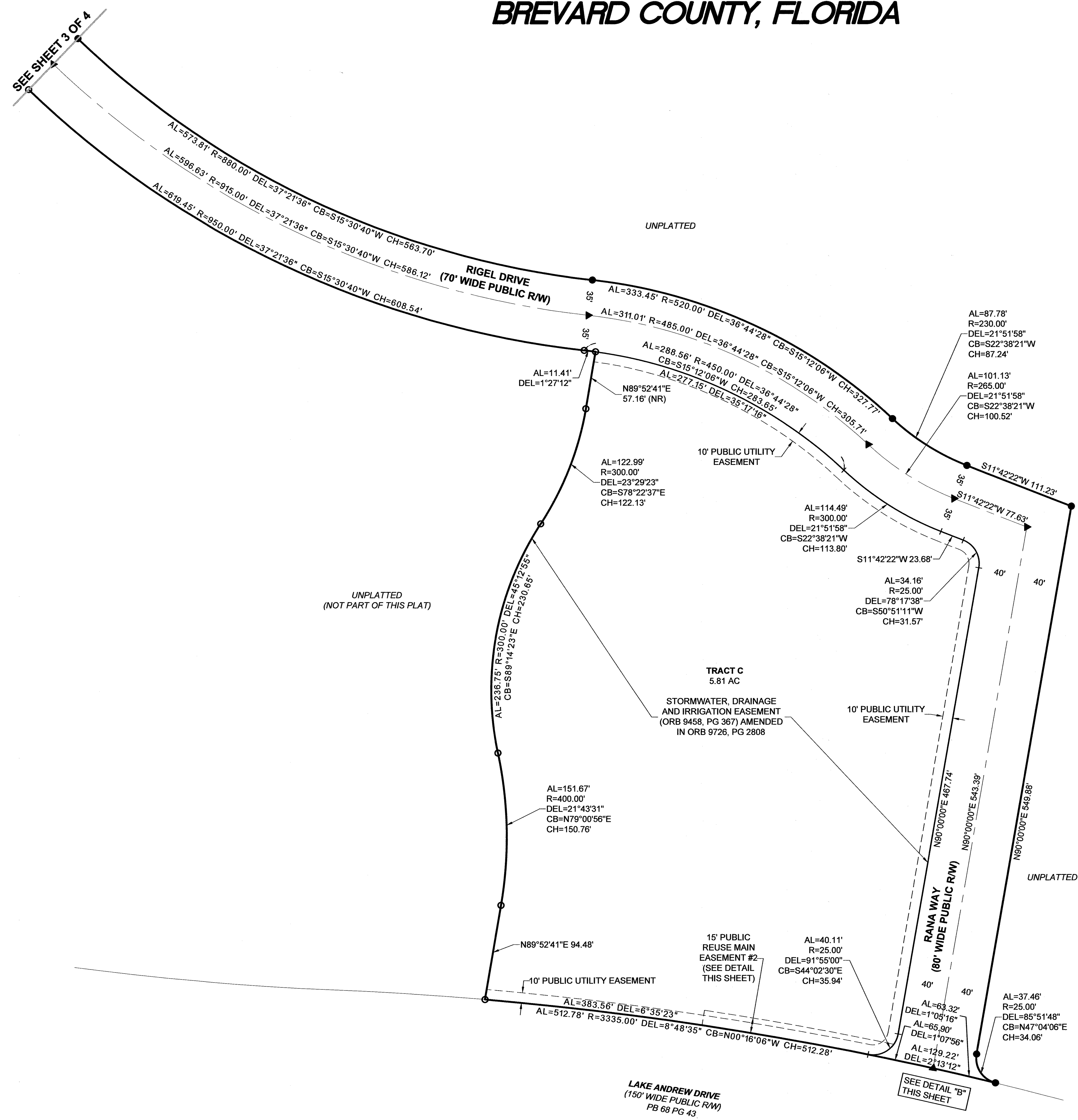
1 INCH = 40 FEET



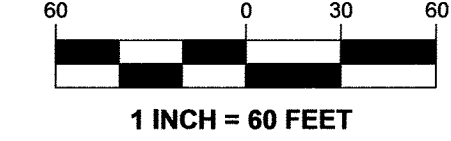
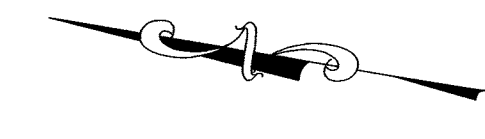
DETAIL "B"



1 INCH = 20 FEET



H:\Projects\2025\1159802\_3011159802\_301.dwg February 28, 2025 9:29:15 AM WVV



1 INCH = 60 FEET