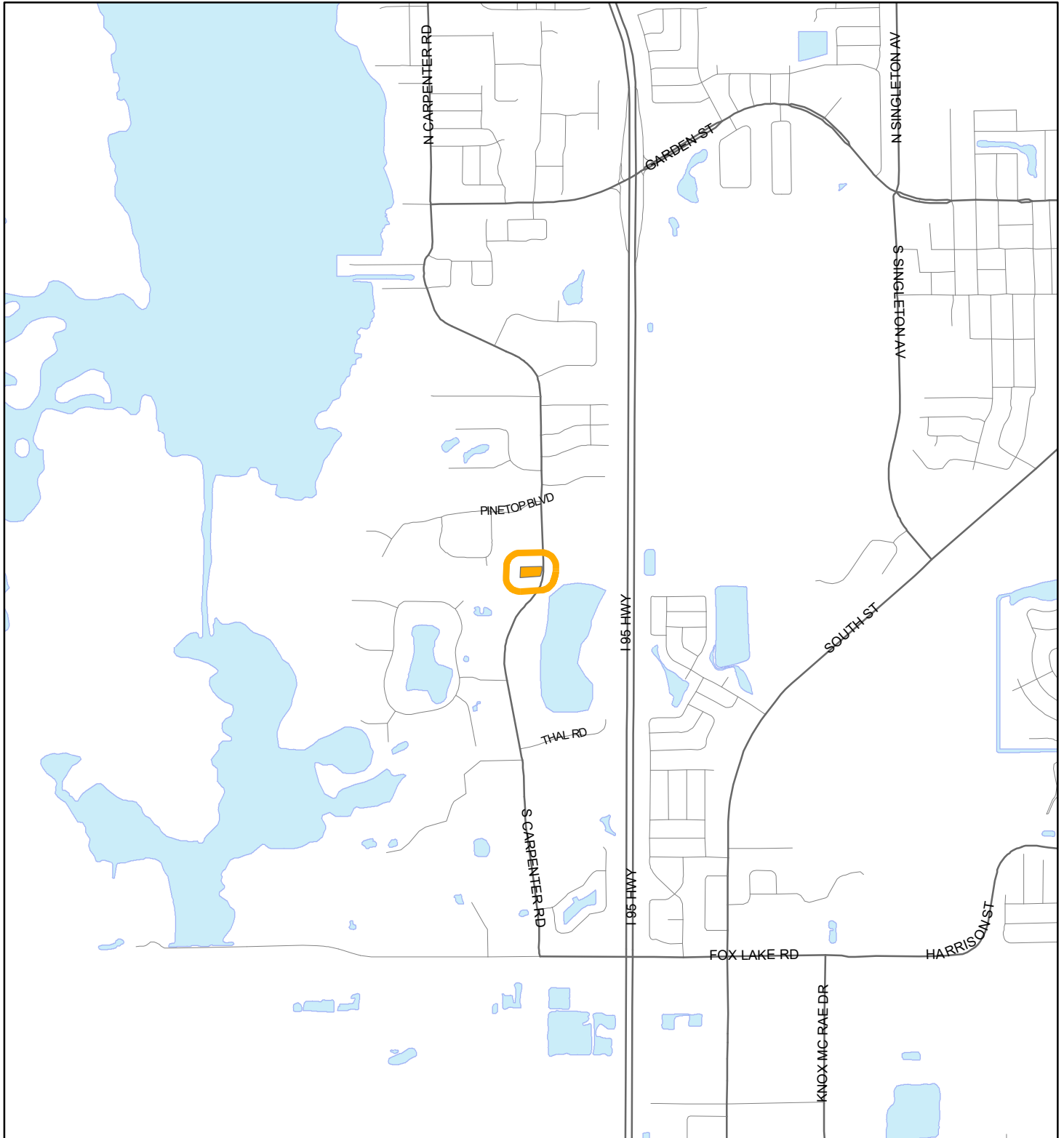


# LOCATION MAP

NASTYN, DANIEL

24V00018



1:24,000 or 1 inch = 2,000 feet

Buffer Distance: 200 feet

This map was compiled from recorded documents and does not reflect an actual survey. The Brevard County Board of County Commissioners does not assume responsibility for errors or omissions hereon.

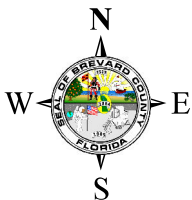
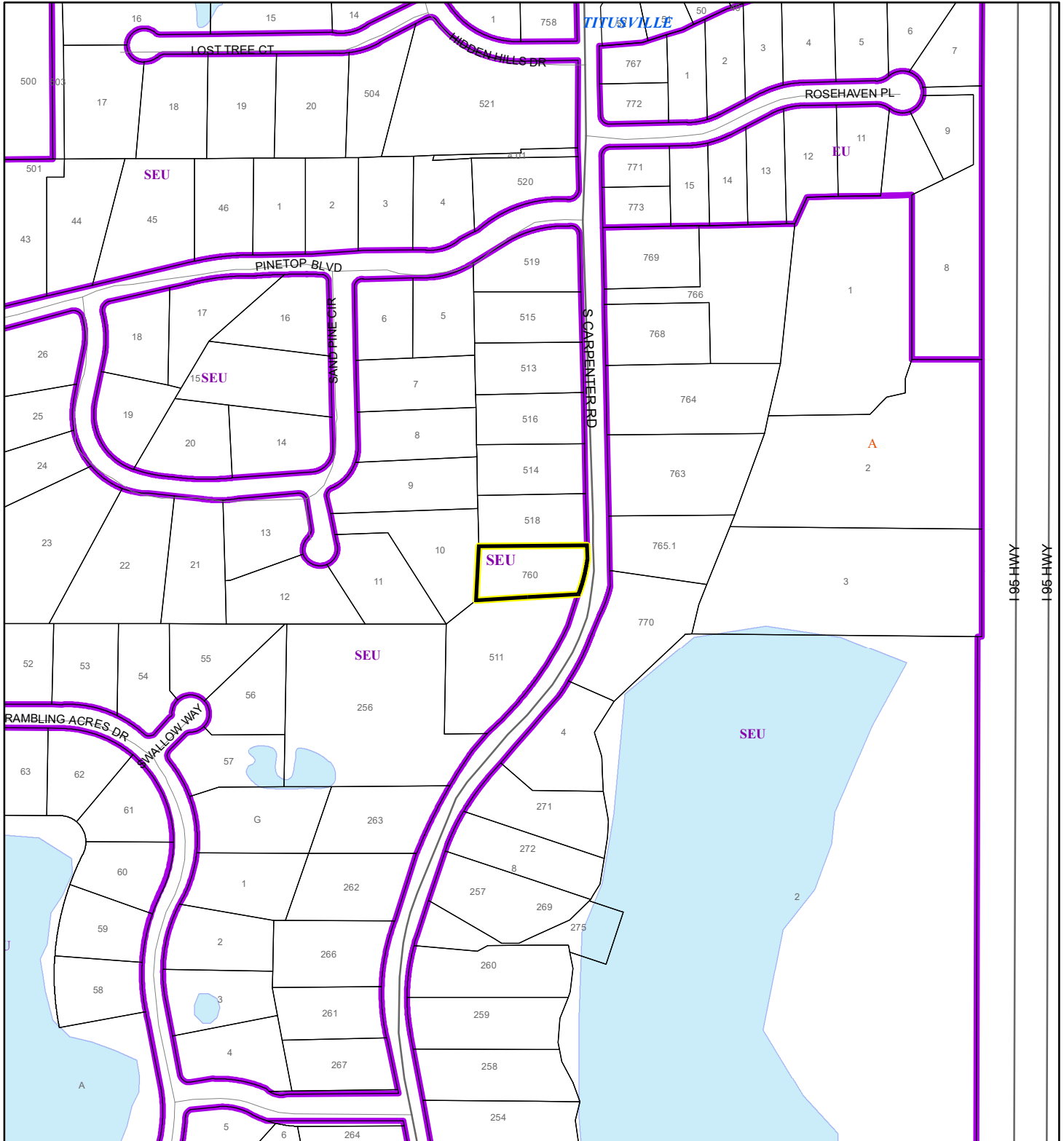
Produced by BoCC - GIS Date: 5/14/2024

Buffer  
Subject Property

# ZONING MAP

NASTYN, DANIEL


24V00018



1:4,800 or 1 inch = 400 feet

This map was compiled from recorded documents and does not reflect an actual survey. The Brevard County Board of County Commissioners does not assume responsibility for errors or omissions hereon.

Produced by BoCC - GIS Date: 5/14/2024

 Subject Property

 Parcels

 Zoning



# AERIAL MAP

NASTYN, DANIEL

24V00018



1:2,400 or 1 inch = 200 feet

PHOTO YEAR: 2023

This map was compiled from recorded documents and does not reflect an actual survey. The Brevard County Board of County Commissioners does not assume responsibility for errors or omissions hereon.

Produced by BoCC - GIS Date: 5/14/2024

 Subject Property

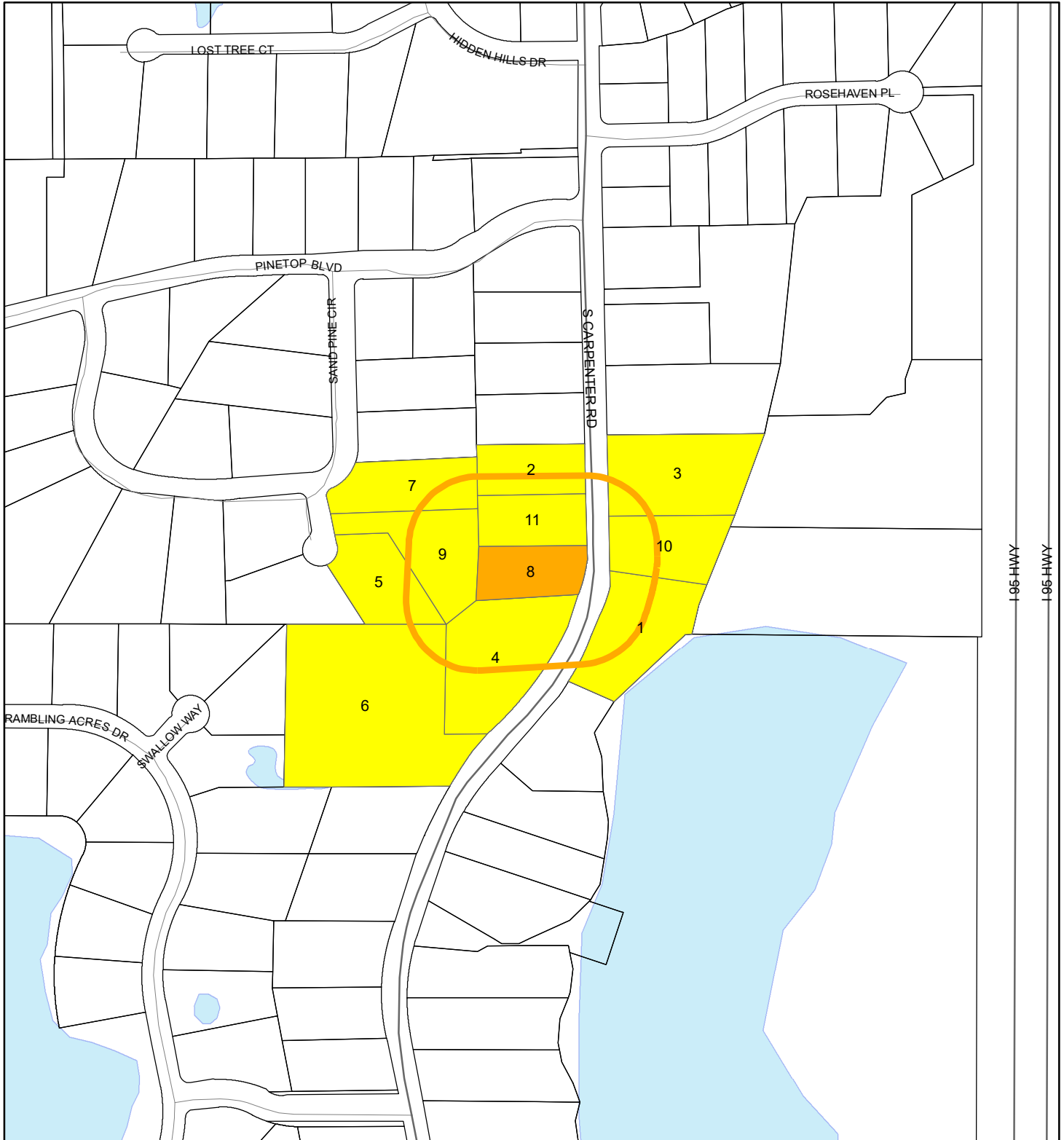
 Parcels



# RADIUS MAP

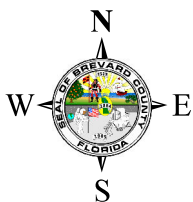
NASTYN, DANIEL

24V00018



XMH 961

XMH 961



1:4,800 or 1 inch = 400 feet

Buffer Distance: 200 feet

This map was compiled from recorded documents and does not reflect an actual survey. The Brevard County Board of County Commissioners does not assume responsibility for errors or omissions hereon.

Produced by BoCC - GIS Date: 5/14/2024

- Buffer
- Subject Property
- Notify Property
- Parcels