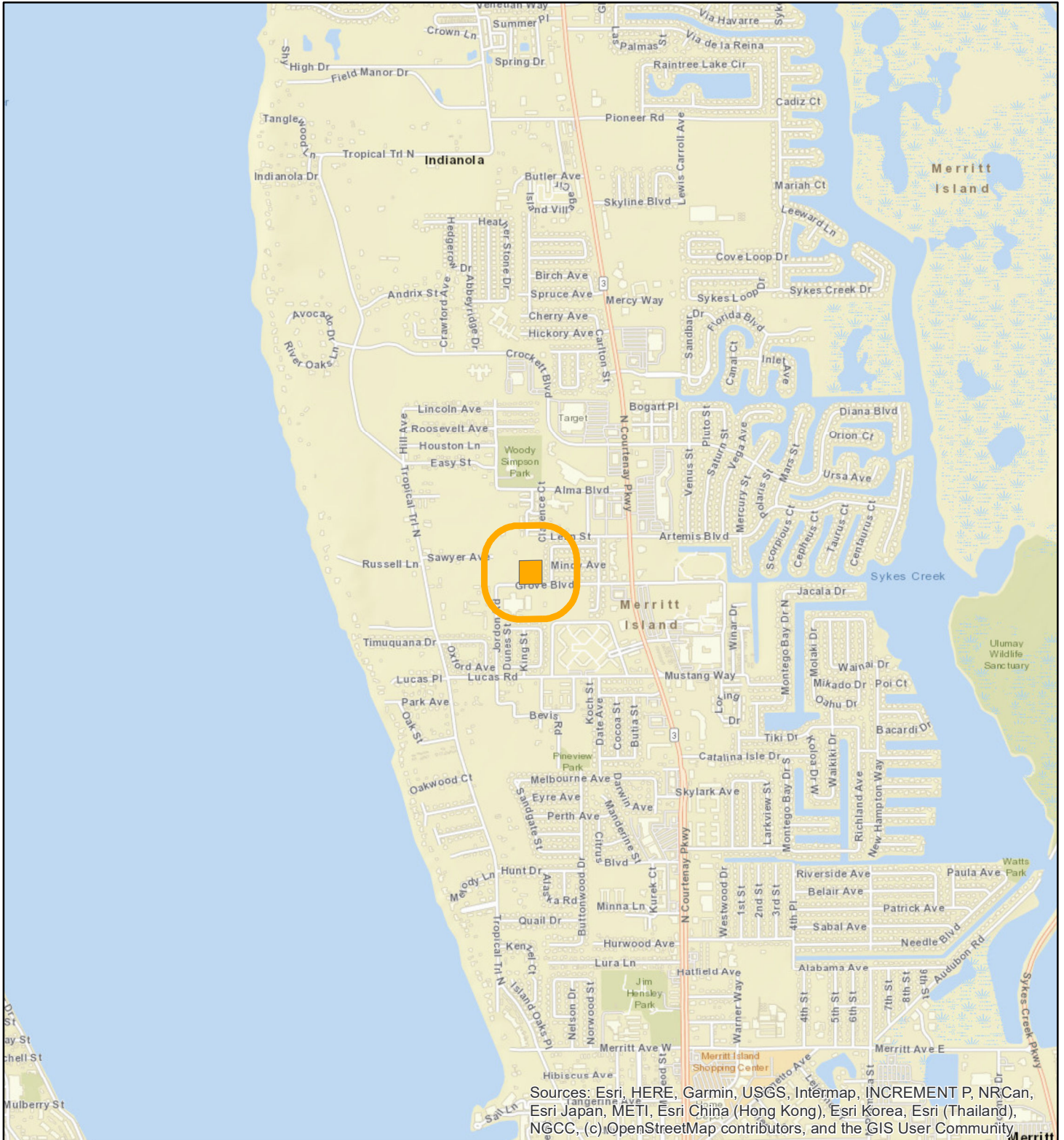
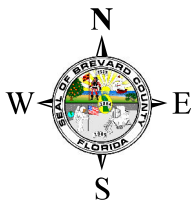


# LOCATION MAP

Domanique Culpepper & Ralph Williams  
26Z00004



Sources: Esri, HERE, Garmin, USGS, Intermap, INCREMENT P, NRCan, Esri Japan, METI, Esri China (Hong Kong), Esri Korea, Esri (Thailand), NGCC, (c) OpenStreetMap contributors, and the GIS User Community





1:24,000 or 1 inch = 2,000 feet

Buffer Distance: 500 feet

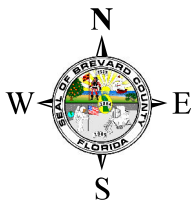
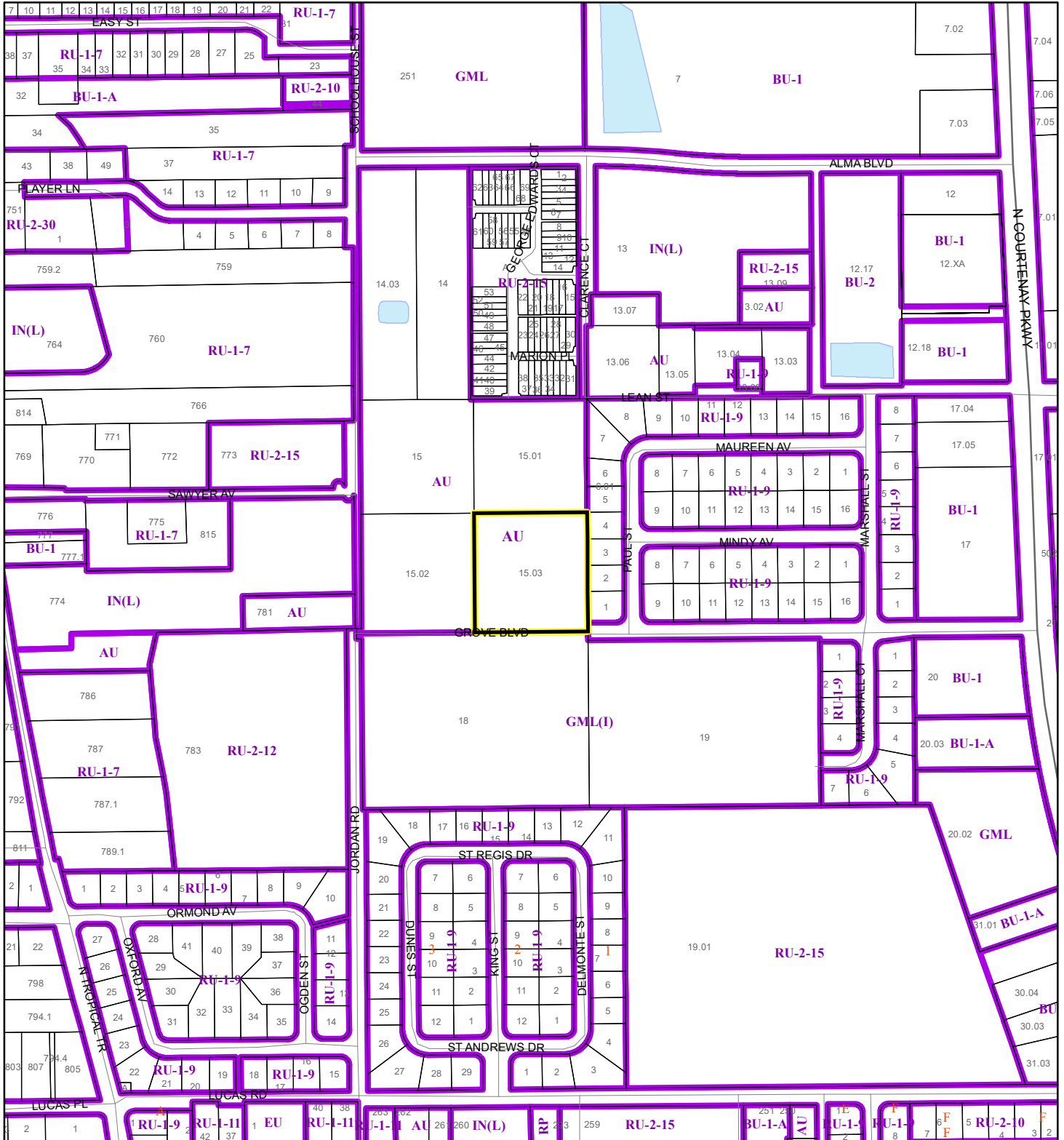
This map was compiled from recorded documents and does not reflect an actual survey. The Brevard County Board of County Commissioners does not assume responsibility for errors or omissions hereon.

Produced by BoCC - GIS Date: 2/6/2026


-  Buffer
-  Subject Property

# ZONING MAP

Domanique Culpepper & Ralph Williams  
26Z00004



1:4,800 or 1 inch = 400 feet

 Subject Property

 Parcels

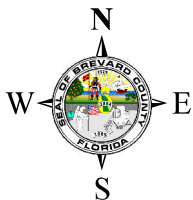
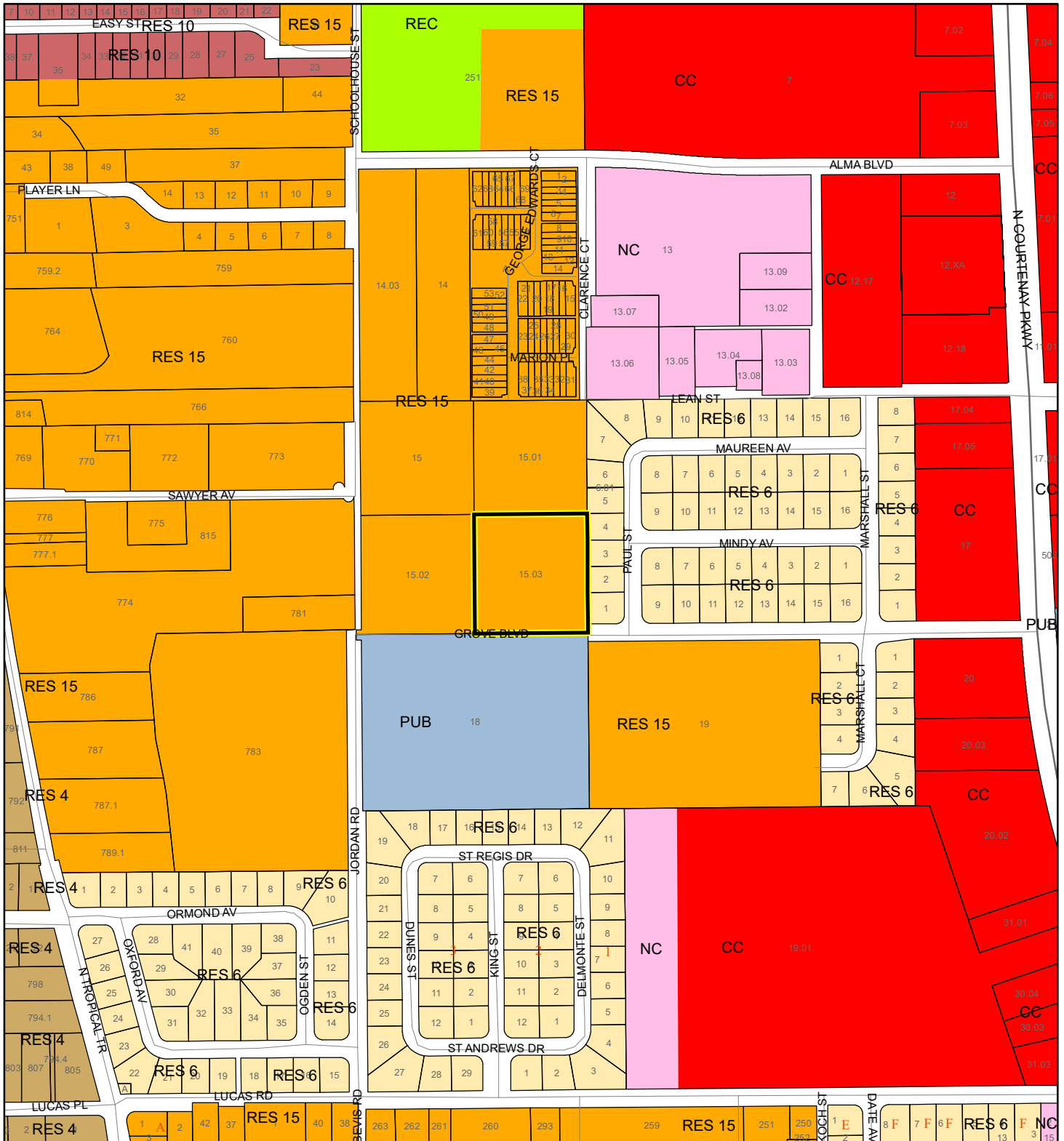
 Zoning

This map was compiled from recorded documents and does not reflect an actual survey. The Brevard County Board of County Commissioners does not assume responsibility for errors or omissions hereon.



Produced by BoCC - GIS Date: 2/6/2026

# FUTURE LAND USE MAP

Domanique Culpepper & Ralph Williams  
26Z00004



1:4,800 or 1 inch = 400 feet

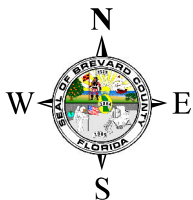
 Subject Property  
 Parcels

This map was compiled from recorded documents and does not reflect an actual survey. The Brevard County Board of County Commissioners does not assume responsibility for errors or omissions hereon.

Produced by BoCC - GIS Date: 2/6/2026

# AERIAL MAP

Domanique Culpepper & Ralph Williams  
26Z00004




1:2,400 or 1 inch = 200 feet

PHOTO YEAR: 2025

This map was compiled from recorded documents and does not reflect an actual survey. The Brevard County Board of County Commissioners does not assume responsibility for errors or omissions hereon.

Produced by BoCC - GIS Date: 2/6/2026

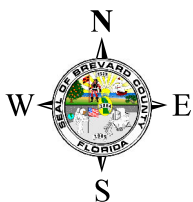
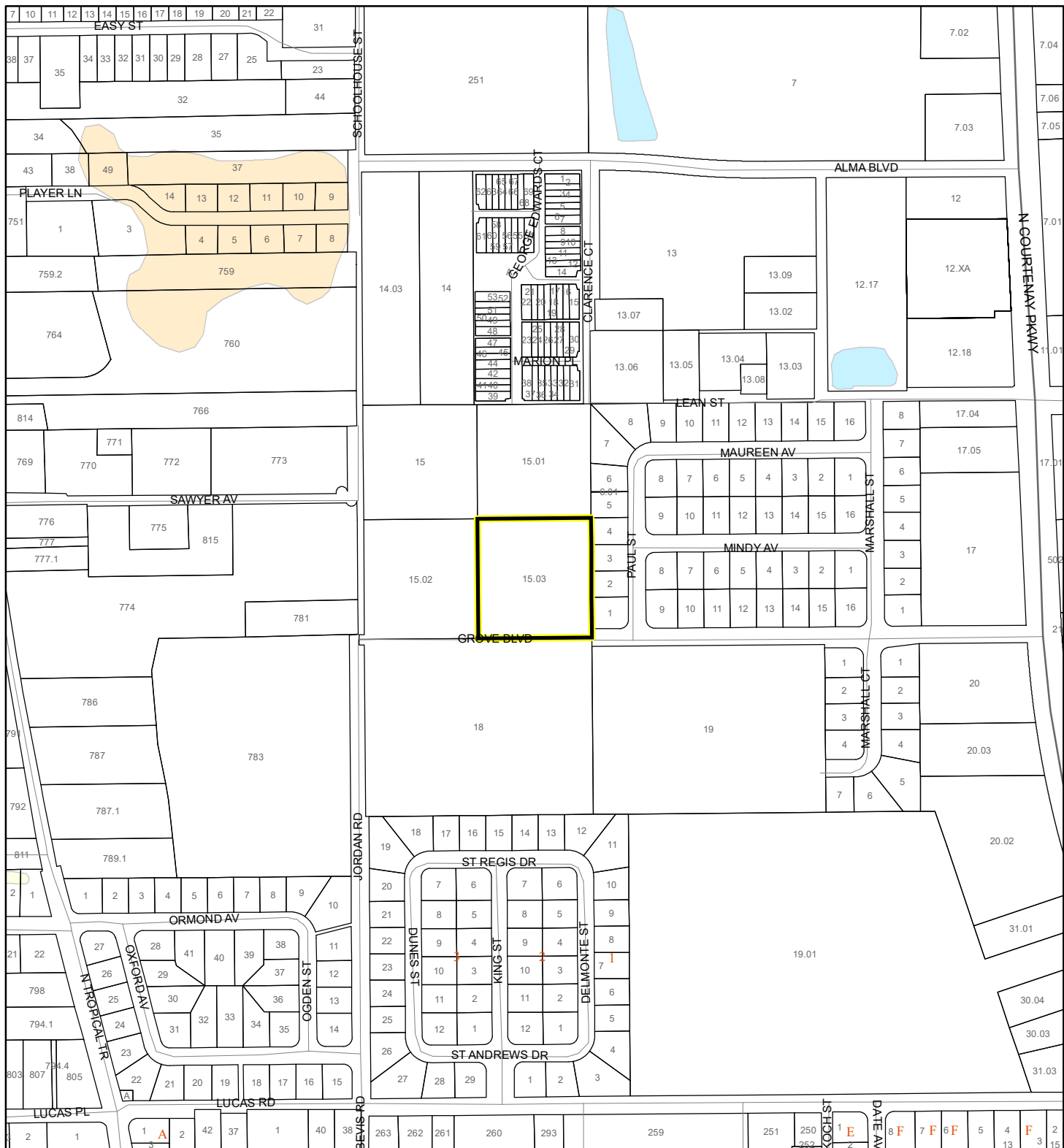
 Subject Property

 Parcels

# NWI WETLANDS MAP

Domanique Culpepper & Ralph Williams

26Z00004










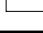


1:4,800 or 1 inch = 400 feet

This map was compiled from recorded documents and does not reflect an actual survey. The Brevard County Board of County Commissioners does not assume responsibility for errors or omissions hereon.

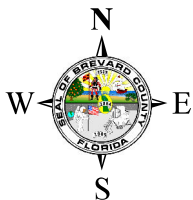
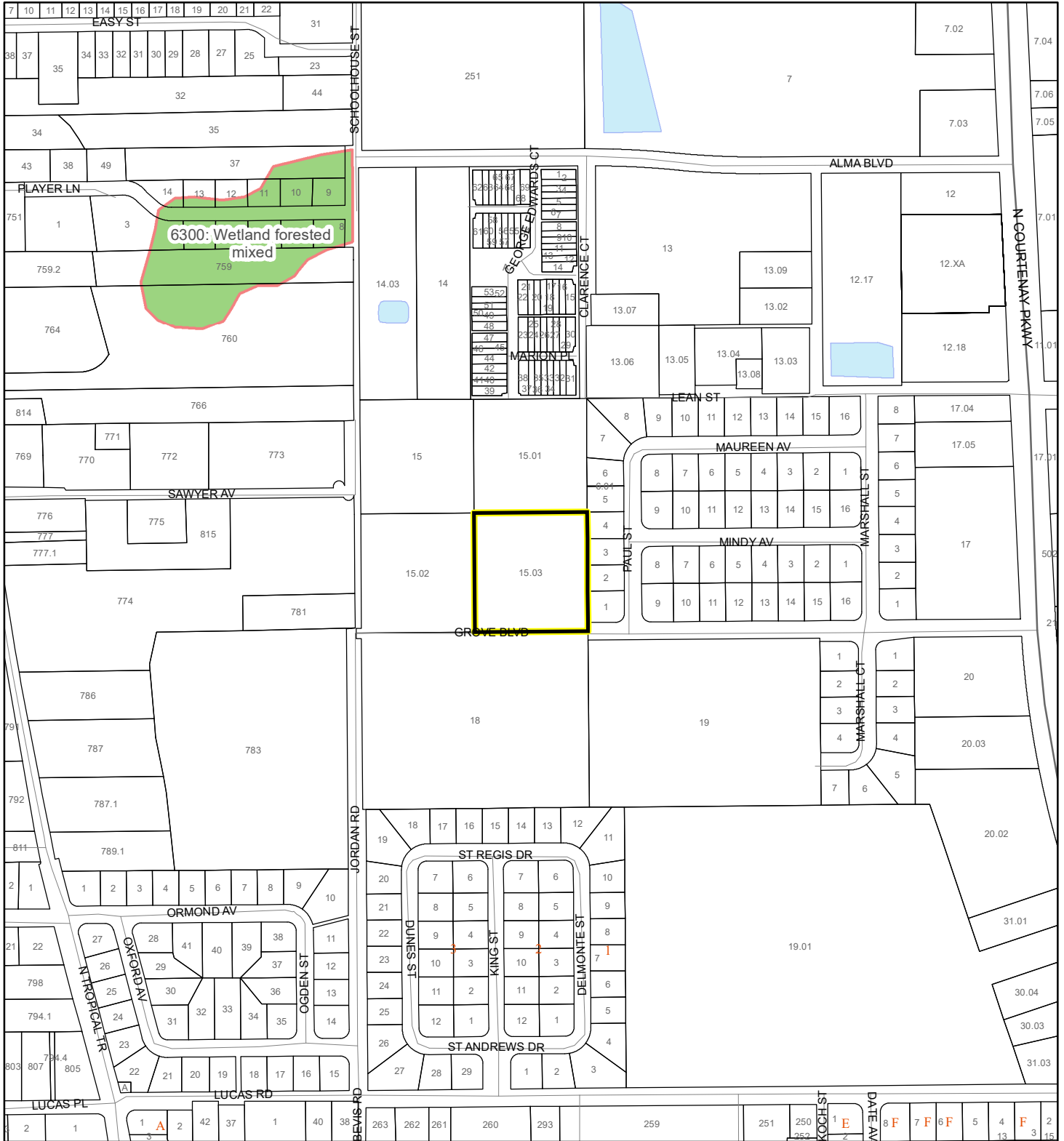
Produced by BoCC - GIS Date: 2/6/2026

## National Wetlands Inventory (NWI)

- |  |   |
|--|---|
|  Estuarine and Marine Deepwater    |  Freshwater Pond |
|  Estuarine and Marine Wetland      |  Lake            |
|  Freshwater Emergent Wetland       |  Other           |
|  Freshwater Forested/Shrub Wetland |  Riverine        |
|  Subject Property                 |  Parcels         |

# SJRWMD FLUCCS WETLANDS - 6000 Series MAP

Domanique Culpepper & Ralph Williams  
26Z00004



1:4,800 or 1 inch = 400 feet

This map was compiled from recorded documents and does not reflect an actual survey. The Brevard County Board of County Commissioners does not assume responsibility for errors or omissions hereon.

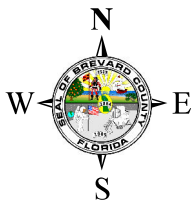
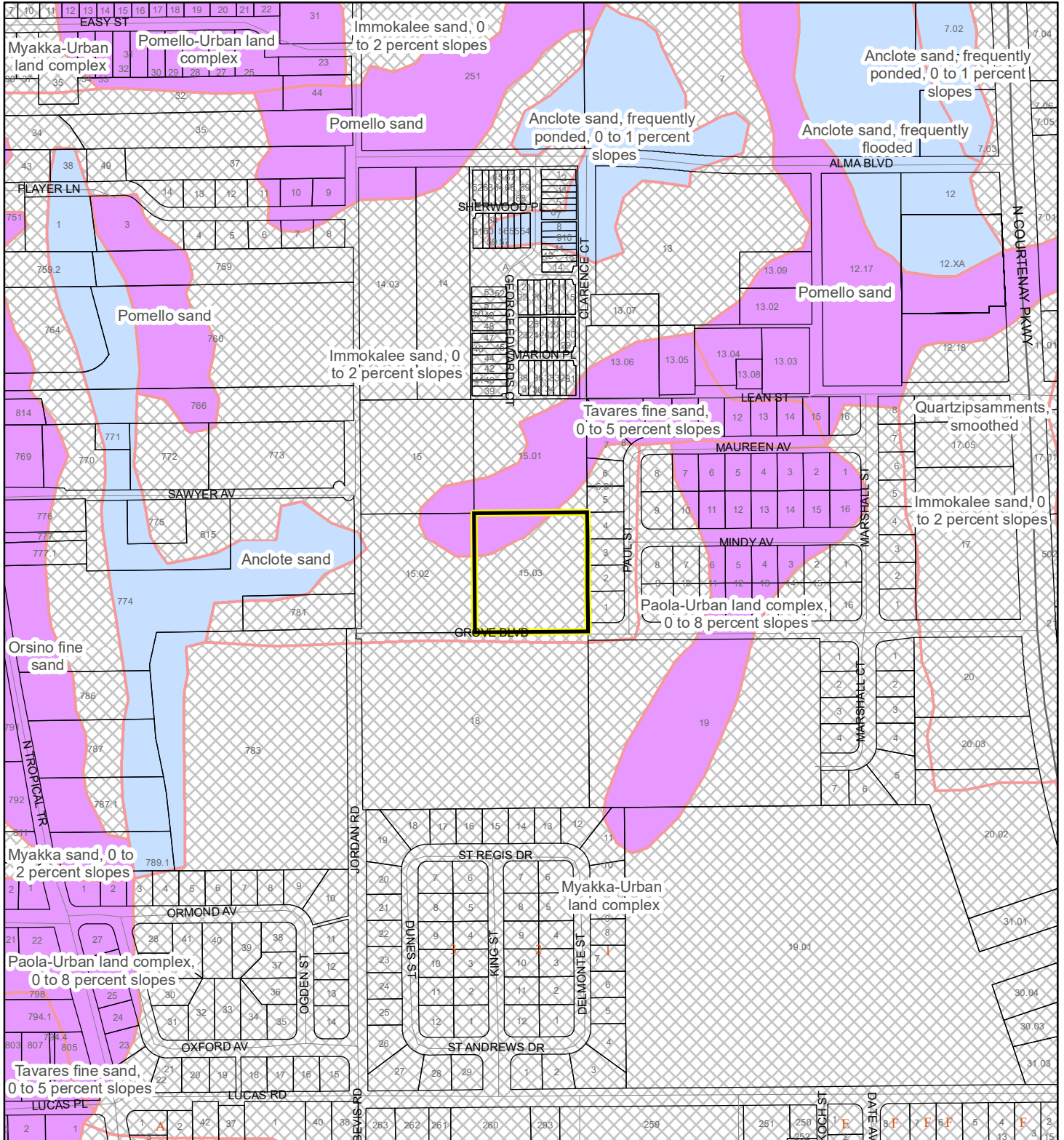
Produced by BoCC - GIS Date: 2/6/2026

## SJRWMD FLUCCS WETLANDS

- Wetland Hardwood Forests - Series 6100
  - Wetland Coniferous Forest - Series 6200
  - Wetland Forested Mixed - Series 6300
  - Vegetated Non-Forested Wetlands - Series 6400
  - Non-Vegetated Wetland - Series 6500
- Subject Property
- Parcels

# USDA SCSSS SOILS MAP

Domanique Culpepper & Ralph Williams  
26Z00004



1:4,800 or 1 inch = 400 feet

This map was compiled from recorded documents and does not reflect an actual survey. The Brevard County Board of County Commissioners does not assume responsibility for errors or omissions hereon.

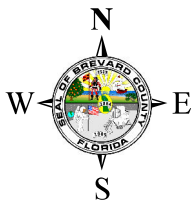
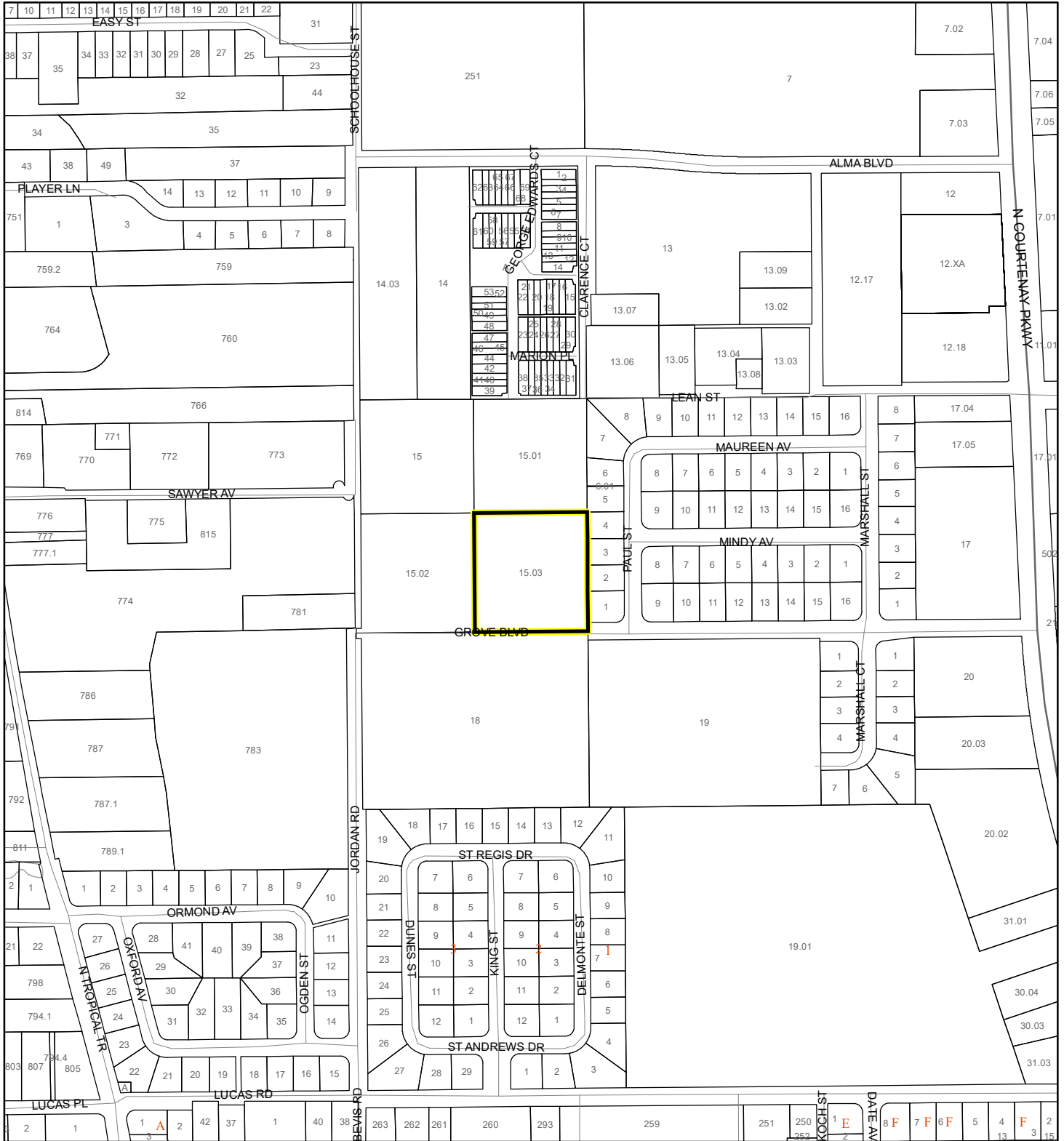
Produced by BoCC - GIS Date: 2/6/2026

## USDA SCSSS Soils

- Aquifer and Hydric
- Aquifer
- Hydric
- None
- Subject Property
- Parcels

# FEMA FLOOD ZONES MAP

Domanique Culpepper & Ralph Williams  
26Z00004



1:4,800 or 1 inch = 400 feet

This map was compiled from recorded documents and does not reflect an actual survey. The Brevard County Board of County Commissioners does not assume responsibility for errors or omissions hereon.

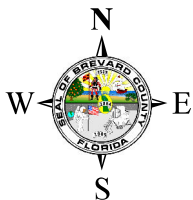
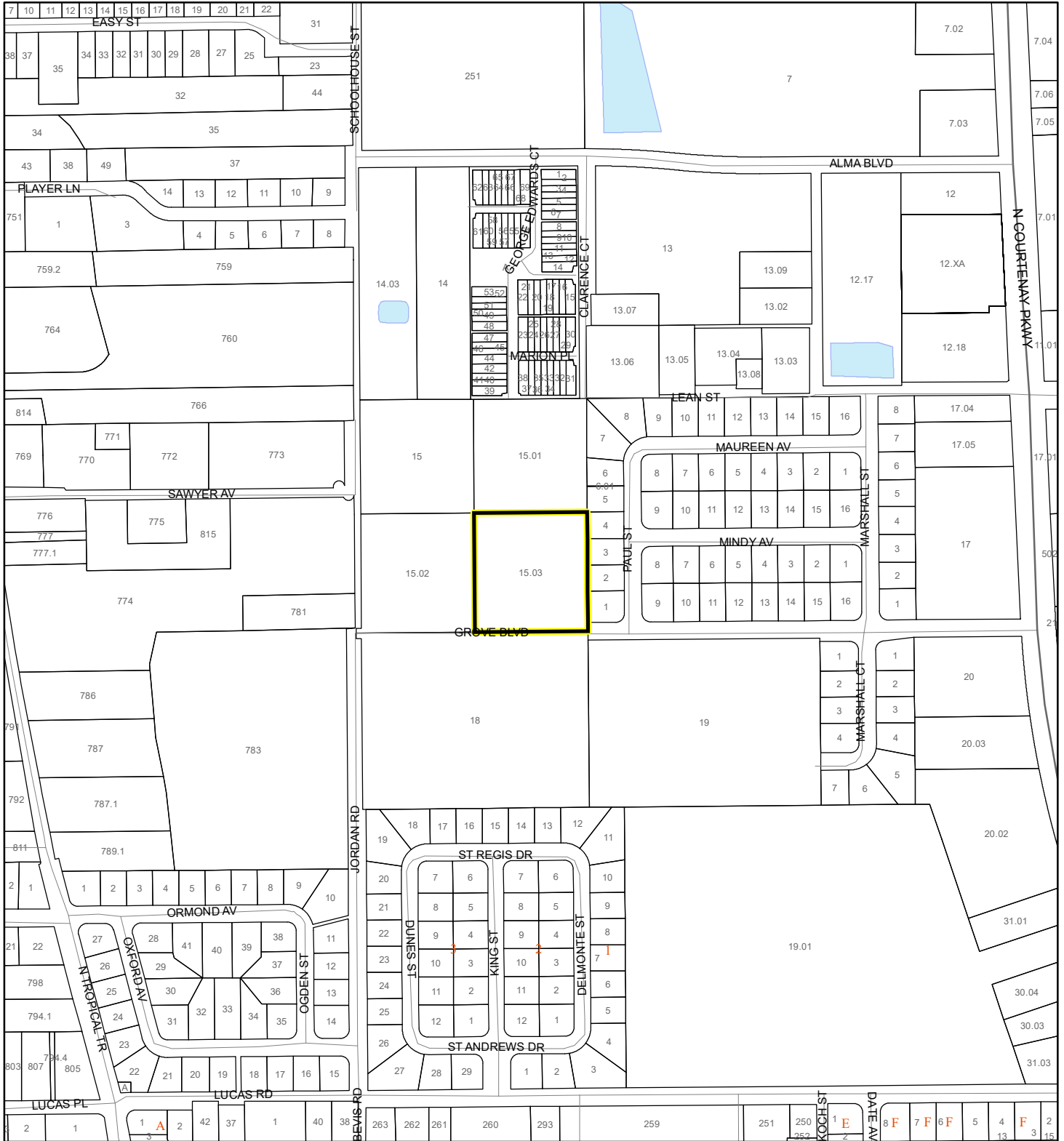
Produced by BoCC - GIS Date: 2/6/2026

### FEMA Flood Zones

- |                  |            |   |
|------------------|------------|---|
| A                | AO         | X |
| AE               | Open Water |   |
| AH               | VE         |   |
| Subject Property | Parcels    |   |

# COASTAL HIGH HAZARD AREA MAP

Domanique Culpepper & Ralph Williams  
26Z00004



1:4,800 or 1 inch = 400 feet

This map was compiled from recorded documents and does not reflect an actual survey. The Brevard County Board of County Commissioners does not assume responsibility for errors or omissions hereon.

Produced by BoCC - GIS Date: 2/6/2026

 Subject Property

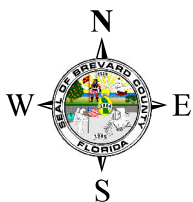
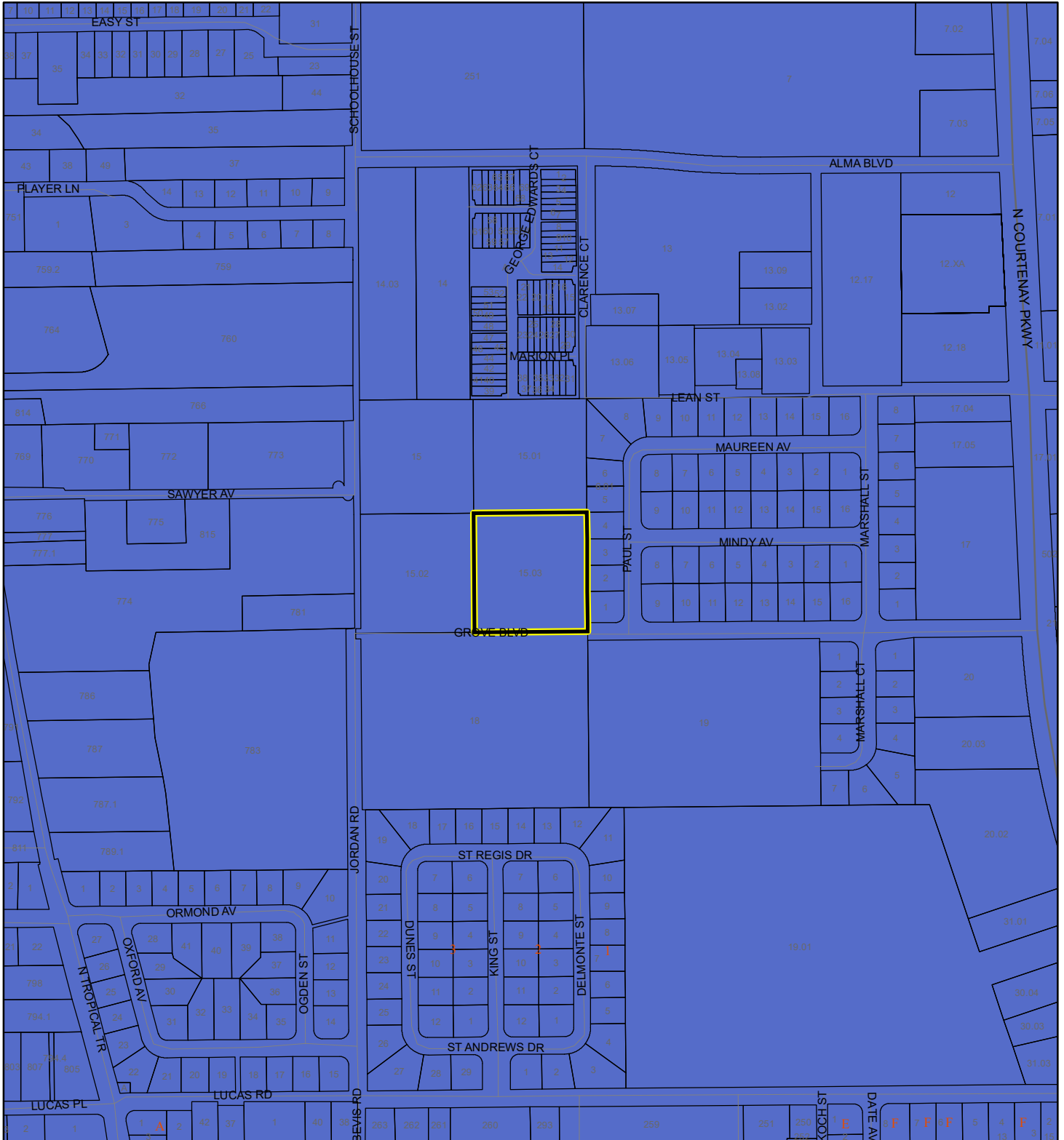
 Parcels

**Coastal High Hazard Area**

 SurgeZoneCat1

# INDIAN RIVER LAGOON SEPTIC OVERLAY MAP

Domanique Culpepper & Ralph Williams  
26Z00004



1:4,800 or 1 inch = 400 feet

This map was compiled from recorded documents and does not reflect an actual survey. The Brevard County Board of County Commissioners does not assume responsibility for errors or omissions herein.

Produced by BoCC - GIS Date: 2/6/2026


 Subject Property

 Parcels

**Septic Overlay**

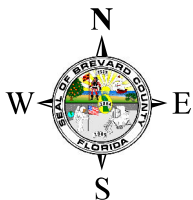
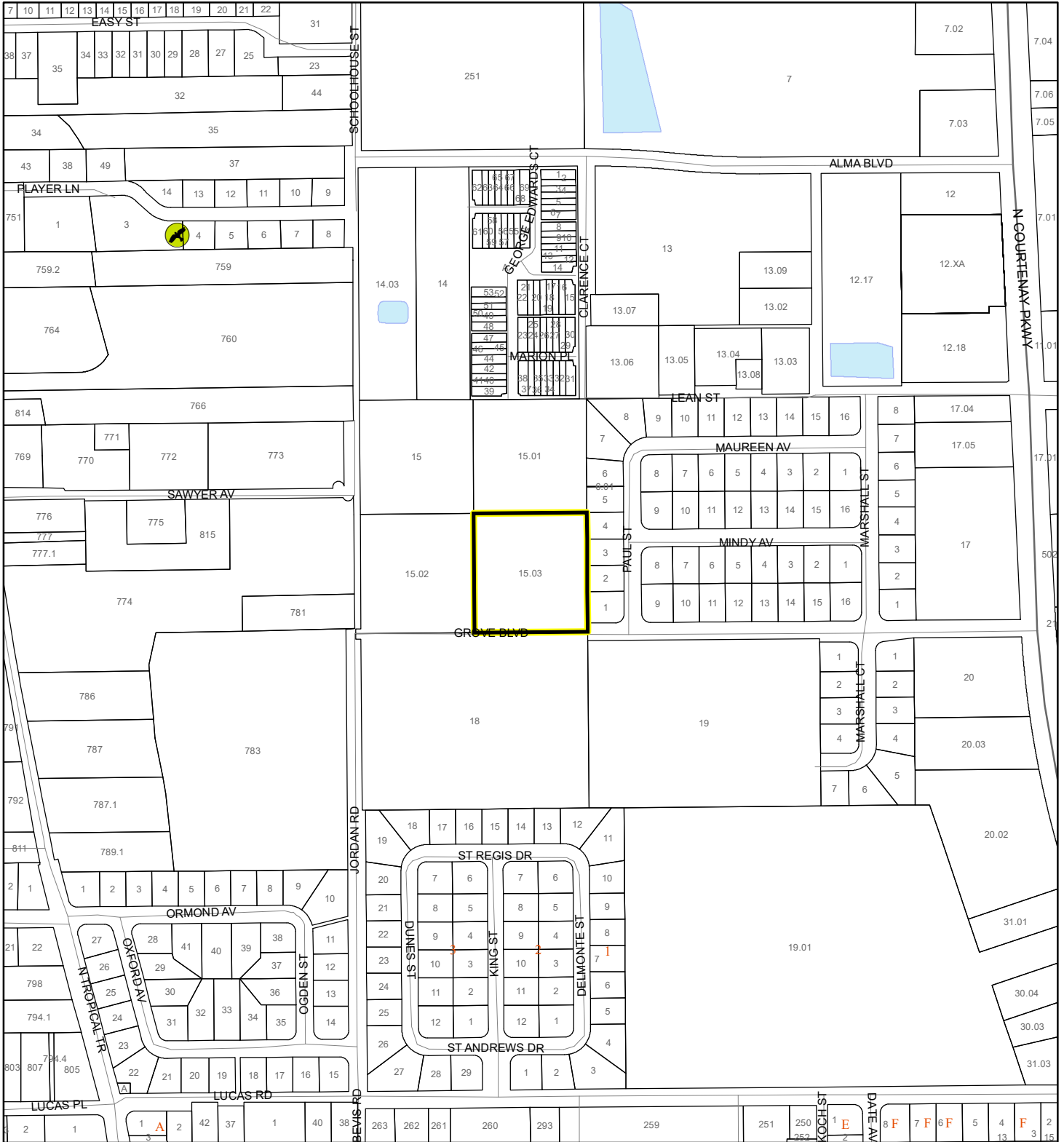
 40 Meters

 60 Meters

 All Distances

# EAGLE NESTS MAP

Domanique Culpepper & Ralph Williams  
26Z00004



1:4,800 or 1 inch = 400 feet

 Subject Property

 Parcels

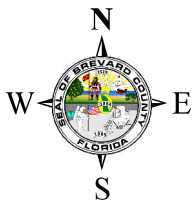
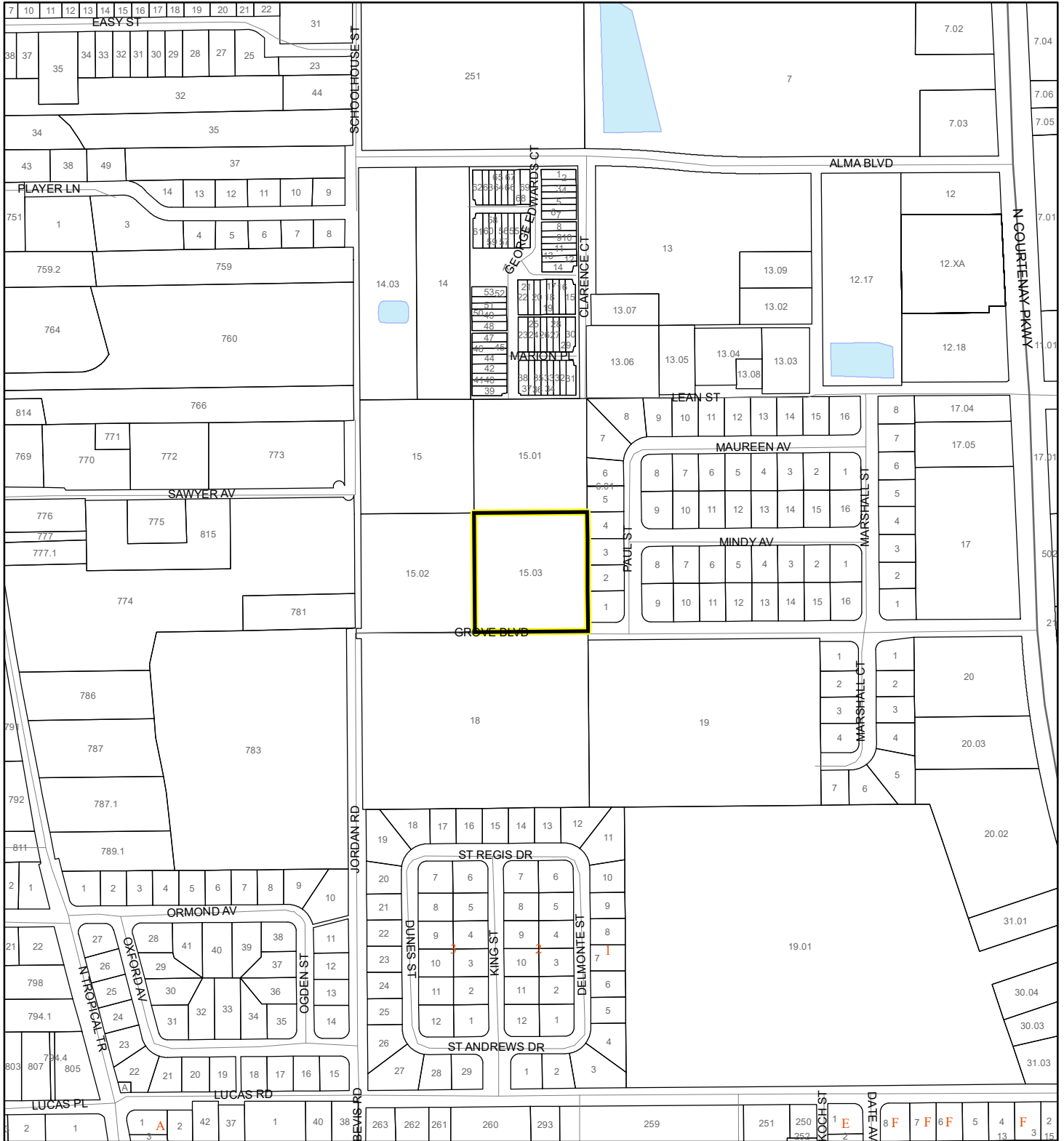
 Eagle Nests  
FWS

This map was compiled from recorded documents and does not reflect an actual survey. The Brevard County Board of County Commissioners does not assume responsibility for errors or omissions hereon.

Produced by BoCC - GIS Date: 2/6/2026

# SCRUB JAY OCCUPANCY MAP




Domanique Culpepper & Ralph Williams  
26Z00004



1:4,800 or 1 inch = 400 feet

This map was compiled from recorded documents and does not reflect an actual survey. The Brevard County Board of County Commissioners does not assume responsibility for errors or omissions hereon.

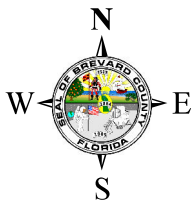
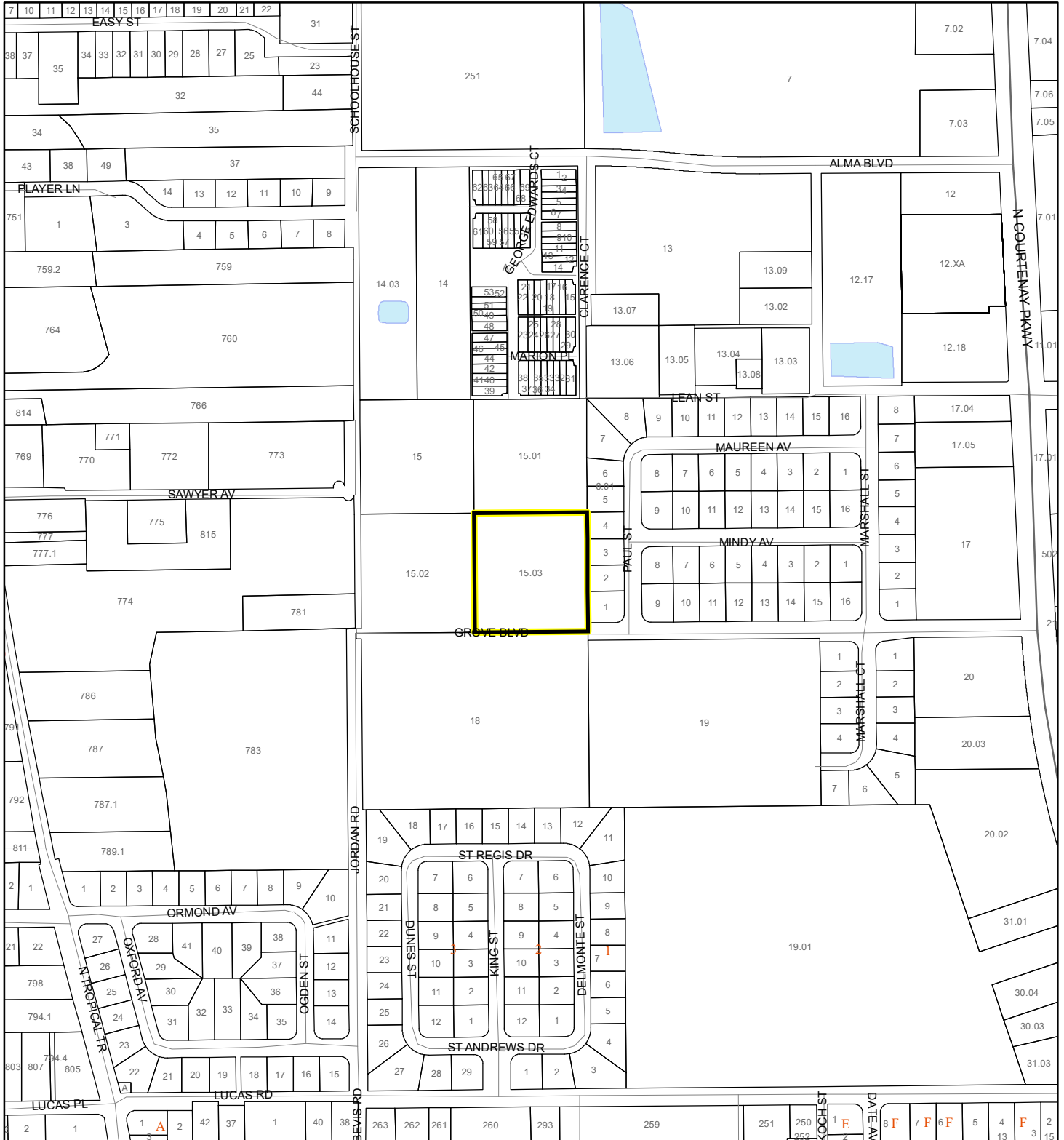
Produced by BoCC - GIS Date: 2/6/2026

-  Subject Property
-  Parcels
-  Scrub Jay Occupancy

# SJRWMD FLUCCS UPLAND FORESTS - 4000 Series MAP

Domanique Culpepper & Ralph Williams

26Z00004



1:4,800 or 1 inch = 400 feet

This map was compiled from recorded documents and does not reflect an actual survey. The Brevard County Board of County Commissioners does not assume responsibility for errors or omissions hereon.

Produced by BoCC - GIS Date: 2/6/2026

## SJRWMD FLUCCS Upland Forests

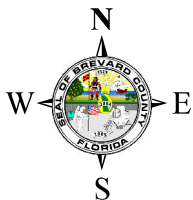
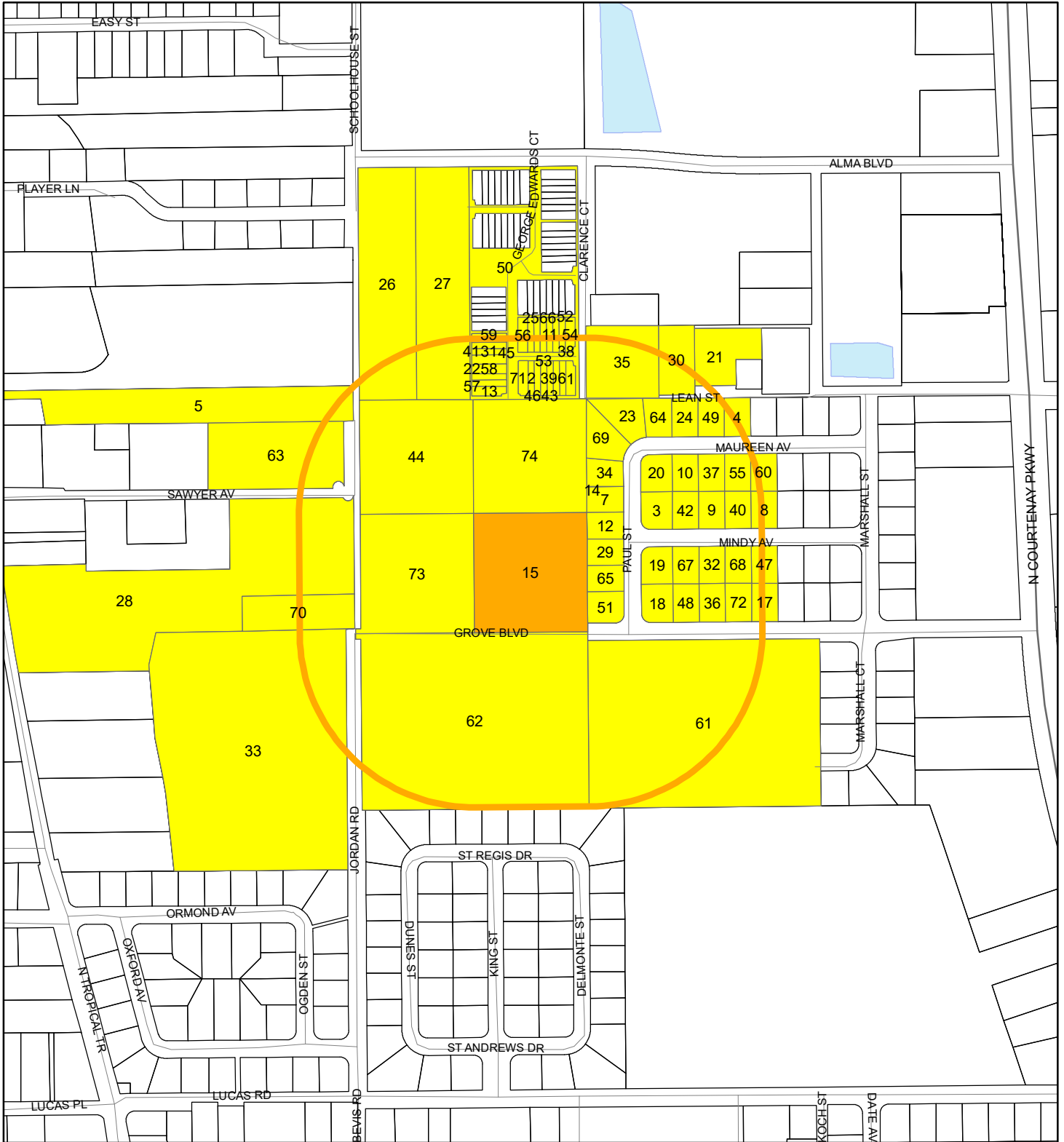
- Upland Coniferous Forest - 4100 Series
- Upland Hardwood Forest - 4200 Series
- Upland Mixed Forest - 4300 Series
- Tree Plantations - 4400 Series

Subject Property

Parcels

# RADIUS MAP

Domanique Culpepper & Ralph Williams  
26Z00004




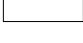


1:4,800 or 1 inch = 400 feet

Buffer Distance: 500 feet

This map was compiled from recorded documents and does not reflect an actual survey. The Brevard County Board of County Commissioners does not assume responsibility for errors or omissions hereon.

Produced by BoCC - GIS Date: 2/6/2026

-  Buffer
-  Subject Property
-  Notify Property
-  Parcels