

RIVER FLY-IN CONDOMINIUMS

MERRITT ISLAND, FLORIDA

Rendering and Site Plan
20PZ00019
River Fly-In



RIVER FLY-IN CONDOMINIUMS
I & H REAL ESTATE, INC.
MERRITT ISLAND, FLORIDA



REVISIONS:
A NEW CHAIR 11-20-16

PROJECT NO: #####
ISSUED FOR PERMIT
ISSUED DATE: 05/12/2016
FILE:

COMPARED TO:
13 10/2015 REVISED PER I&H
14 05/12/2016
DRAWING NUMBER
G000A

DEVELOPER:
I & H Real Estate Inc.

111 Longwood Avenue
Rockledge, Florida 32955
Phone Number: 321-446-2023
Fax Number: 321-637-0435
E-mail:

ARCHITECT:
EDI International, PC. Corp.

10550 Richmond Ave. Suite 160
Houston, TX 77042
Phone Number: 713-375-1400
Fax Number: 713-375-1600
Contact: Brit L. Perkins, AIA, LEED A.P.
E-mail: Brit.perkins@edi-international.com

CIVIL:
Construction Engineering Group

2651 W. Eau Gallie Blvd. Suite A
Melbourne, FL 32935
Phone Number: 321-253-1221
Fax Number:
www.ceengineering.com

STRUCTURAL:
SCA Consulting Engineers Inc.

12511 Emily Court
Sugar Land Texas 77478
Phone Number: 713-779-7252
Fax Number: 713-779-1173
www.scaengineers.com

ELECTRICAL :
PILO ENGINEERING. PA

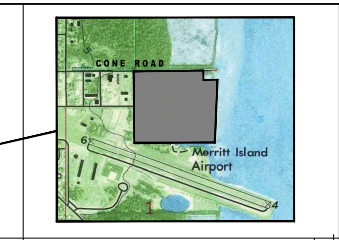
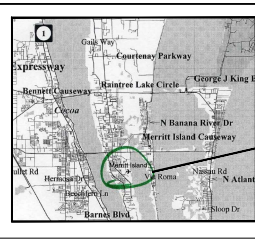
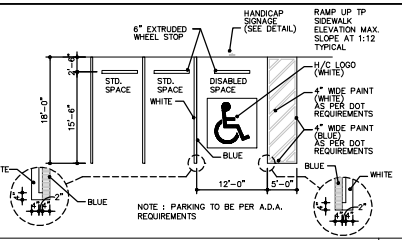
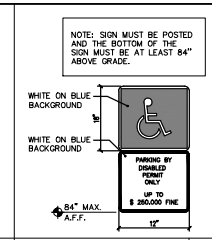
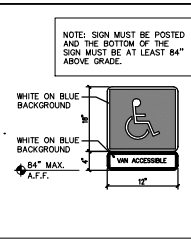
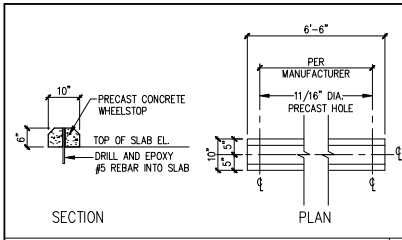
540 HIBISCUS BLVD.
MERRITT ISLAND, FL. 32925
Phone Number: 321-427-3644
Fax Number: 321-427-3644
E-mail: MP-PILOENG@CFL.PR.COM

MEP
DDC ENGINEERING

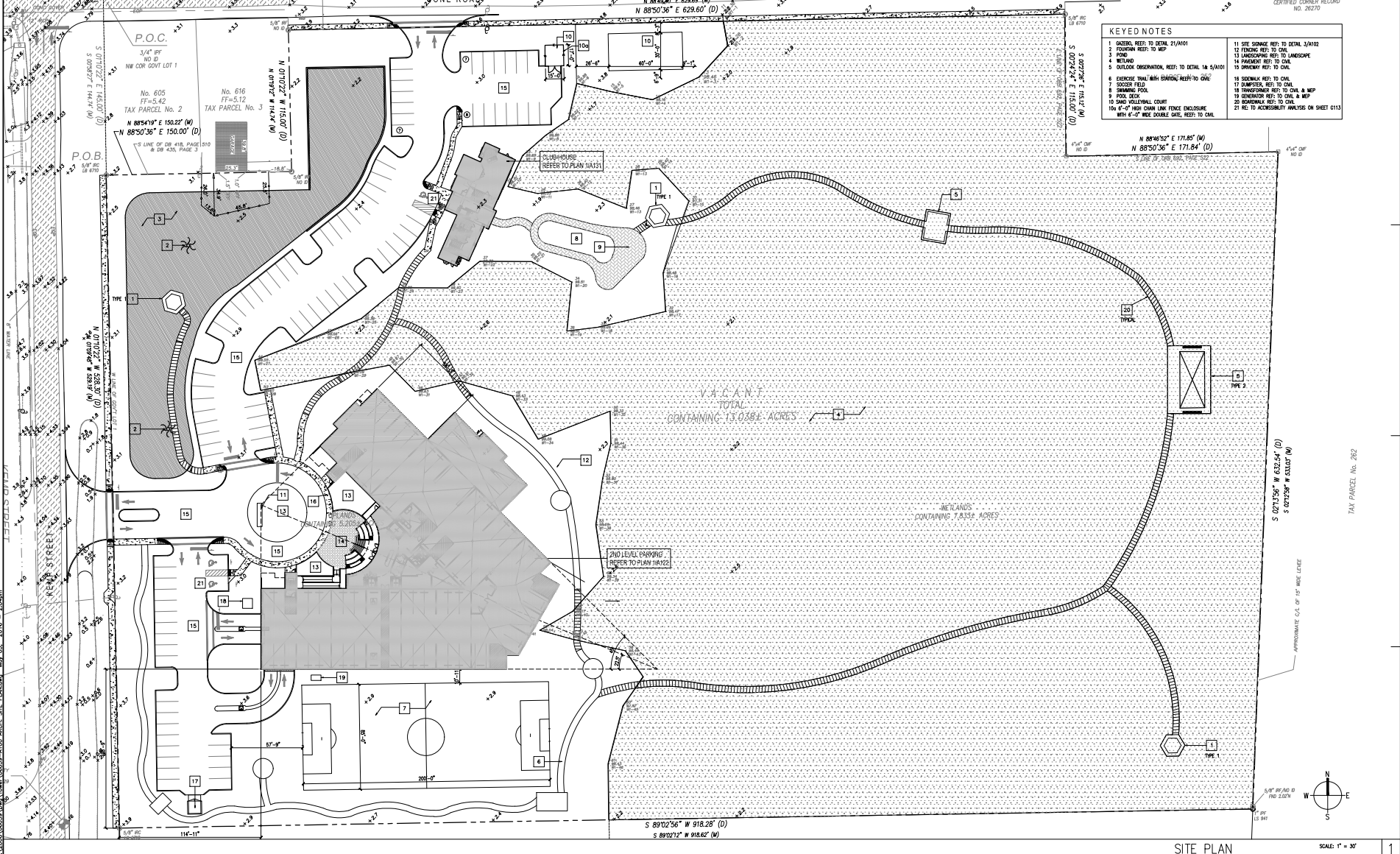
4083 US Highway 1
Rockledge, FL 32955
Phone Number: 321-633-4522
E-mail: dasilva.david@ddc-engineers.com

FIRE PROTECTION:
First-String Fire Protection

4150 Dow Road, Suite 104
Melbourne, FL 32934
N.I.C.E.T. SET #79507
Phone Number: 321-255-2750
Email: jamie@first-string.net



WHEEL STOP DETAILS SCALE: 3/4" = 1'-0" | 30 VAN ACCES. SIGNAGE | 24 HANDICAP SIGNAGE | 23 HANDICAP PARKING DETAIL @ TYP. PARKING | 17 LOCATION MAP | 11 PROJECT SITE LOCATION | 5



EDI
International
10650 Richmond Avenue
Suite 100
Houston, Texas 77042
(713) 375-1400
FAX (713) 375-1600
www.edi-international.com
TEXAS, CALIFORNIA, NEW YORK

SCALE: 1" = 30'-0"

SITE PLAN

RIVER FLY-IN CONDOMINIUMS
I & E REAL ESTATE, INC.
MERRITT ISLAND, FLORIDA

STATE OF FLORIDA
COUNTY OF BREVARD
APPROXIMATE C.O.D. OF 15' WIDE LEVÉE

REVISIONS:

PROJECT NO: 000039-0000
ISSUE FOR PERMIT
ISSUED DATE: 05/01/2016
FILE:

DESIGNED BY: [Signature]
DRAWING NUMBER: A100

1 ARCH. SITE PLAN