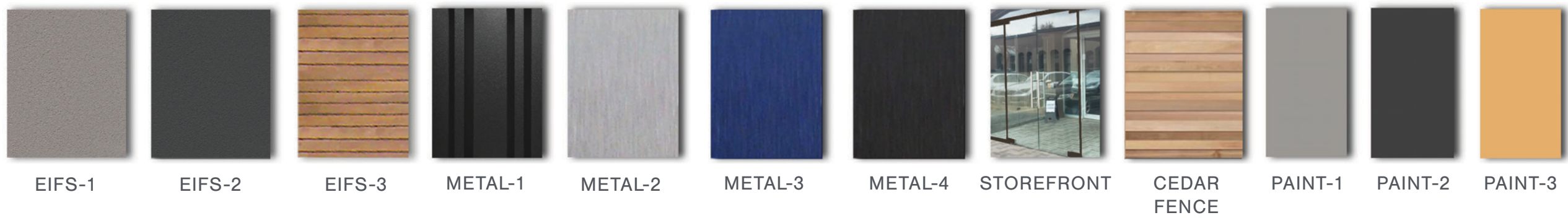




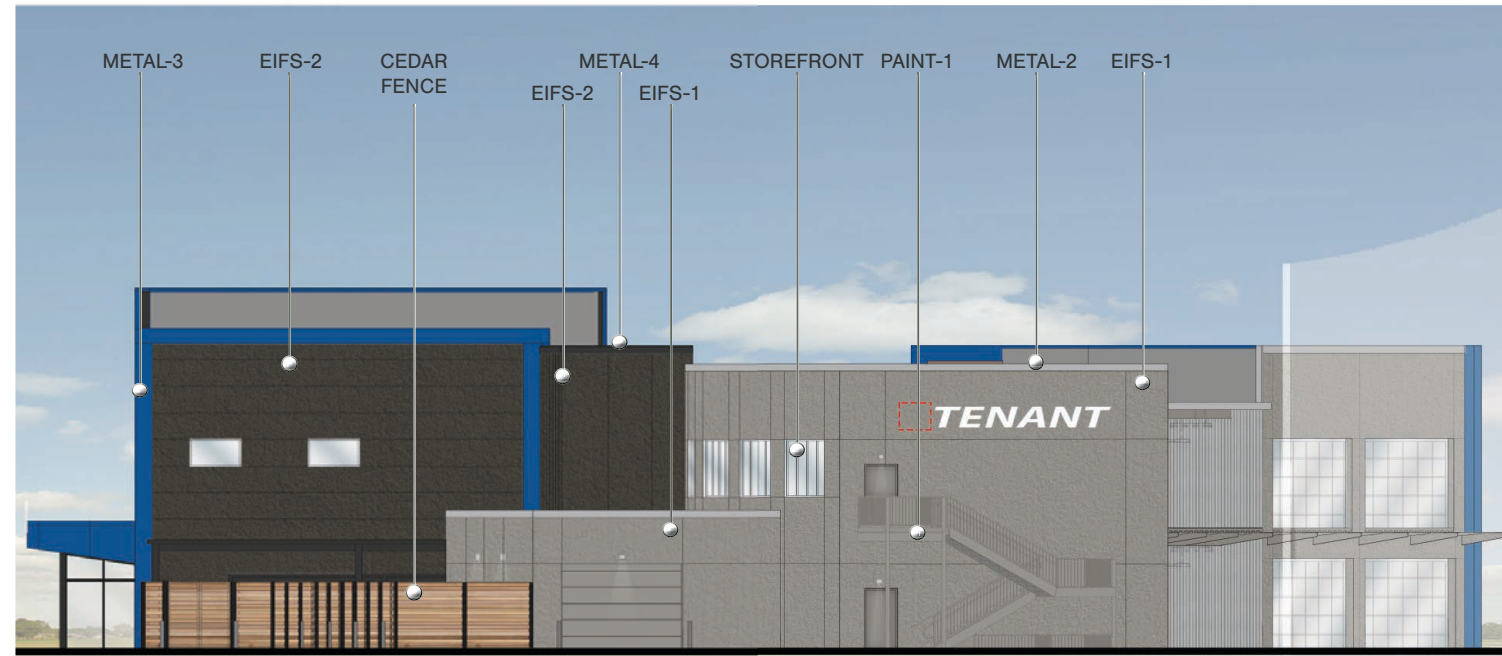
Front Elevation



Rear Elevation

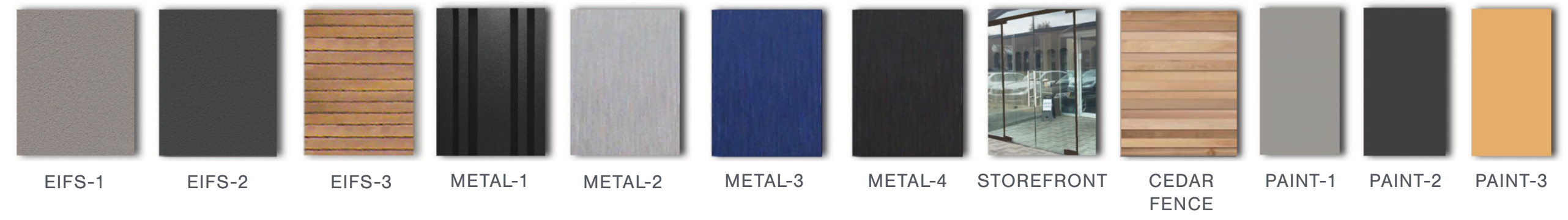
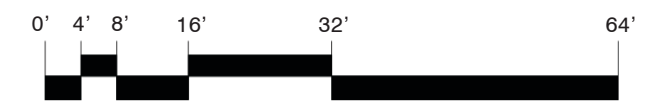


Exterior Elevations

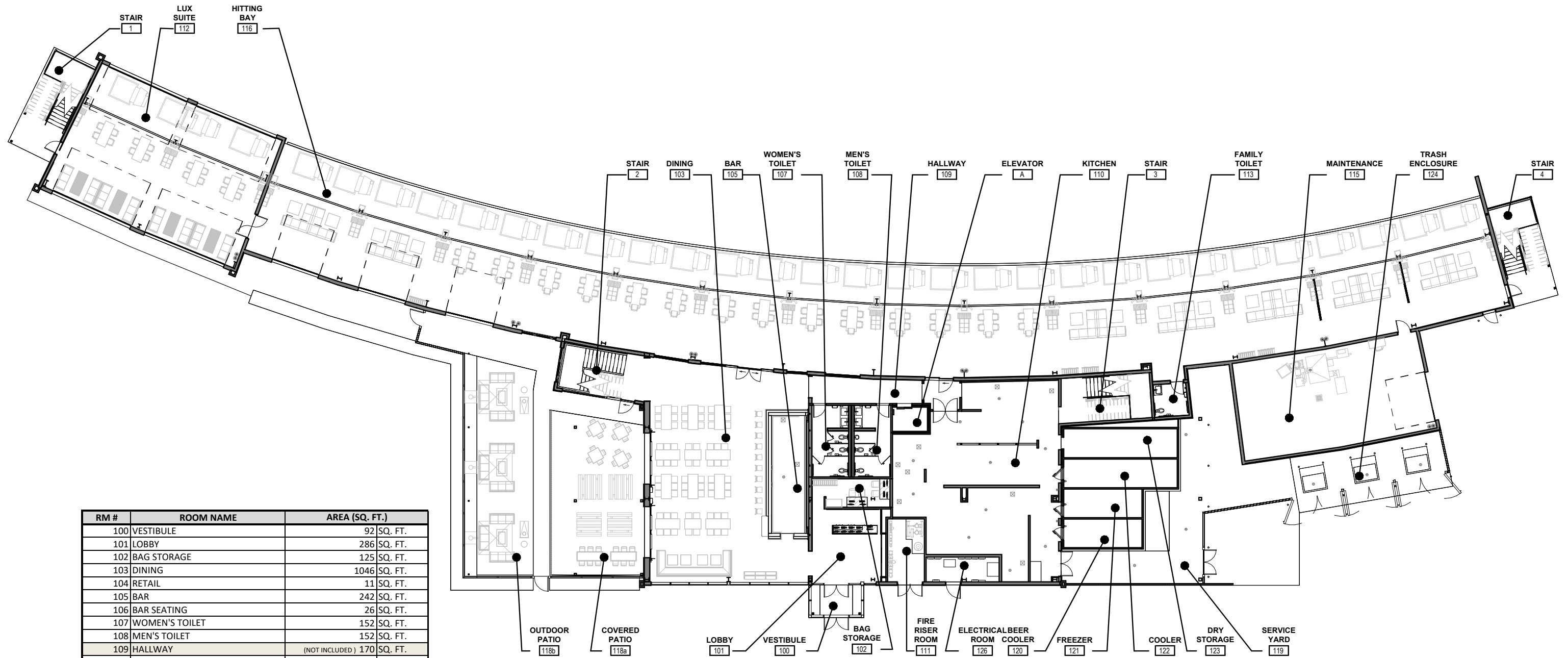


Left Elevation

Right Elevation



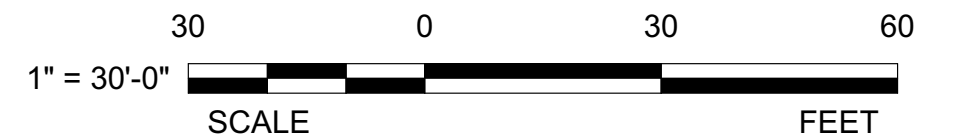
Exterior Elevations

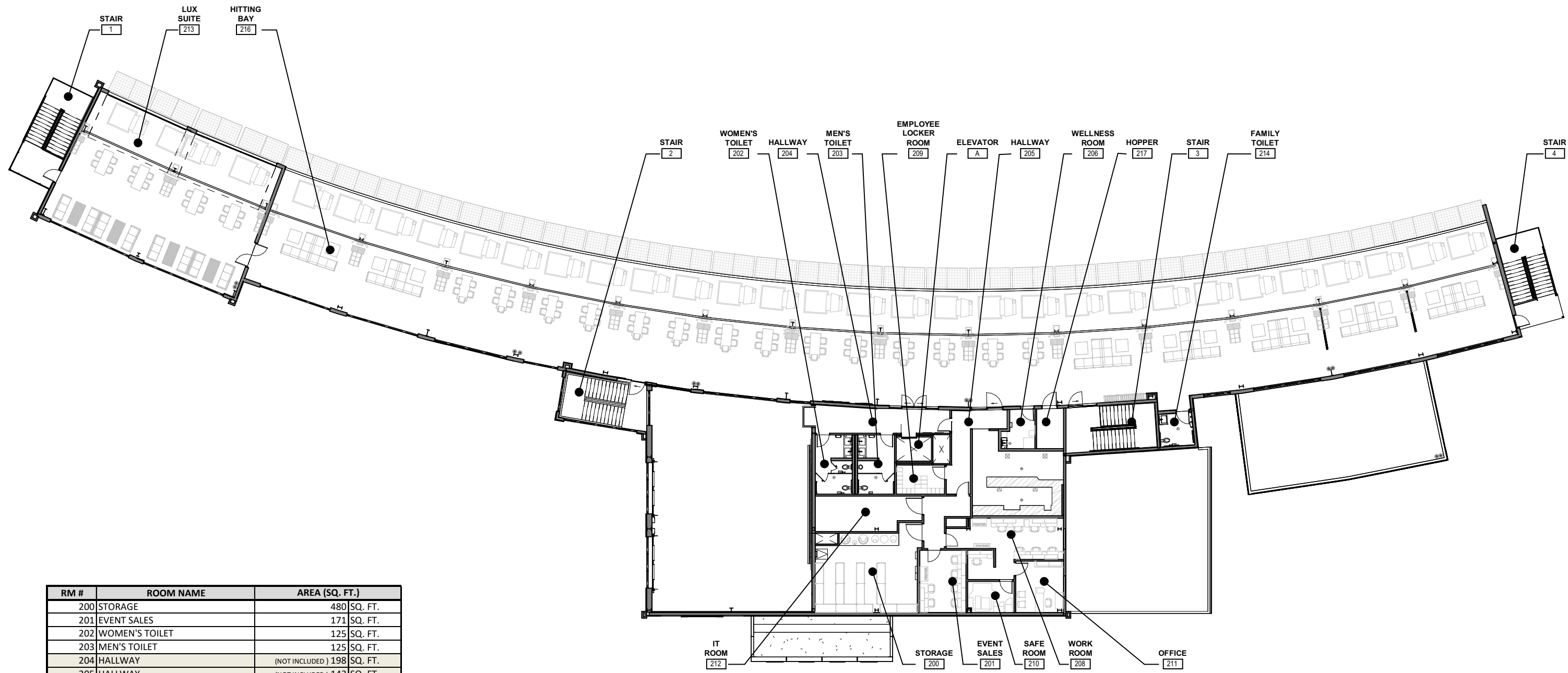


| RM # | ROOM NAME | AREA (SQ. FT.) |
|--|---|-----------------------------|
| 100 | VESTIBULE | 92 SQ. FT. |
| 101 | LOBBY | 286 SQ. FT. |
| 102 | BAG STORAGE | 125 SQ. FT. |
| 103 | DINING | 1046 SQ. FT. |
| 104 | RETAIL | 11 SQ. FT. |
| 105 | BAR | 242 SQ. FT. |
| 106 | BAR SEATING | 26 SQ. FT. |
| 107 | WOMEN'S TOILET | 152 SQ. FT. |
| 108 | MEN'S TOILET | 152 SQ. FT. |
| 109 | HALLWAY | (NOT INCLUDED) 170 SQ. FT. |
| 110 | KITCHEN | 1543 SQ. FT. |
| 111 | FIRE RISER ROOM | 139 SQ. FT. |
| 112 | LUX SUITE | 1695 SQ. FT. |
| 113 | FAMILY TOILET | 65 SQ. FT. |
| 115 | MAINTENANCE | 1123 SQ. FT. |
| 116 | HITTING BAY | 8524 SQ. FT. |
| 118b | COVERED PATIO | (NOT INCLUDED) 780 SQ. FT. |
| 118b | OUTDOOR PATIO | (NOT INCLUDED) 1596 SQ. FT. |
| 119 | SERVICE YARD (INCLUDES COOLERS & STORAGE) | (NOT INCLUDED) 1283 SQ. FT. |
| 124 | TRASH ENCLOSURE | (NOT INCLUDED) 571 SQ. FT. |
| 126 | ELECTRICAL ROOM | 109 SQ. FT. |
| GROUND LEVEL NET USEABLE FLOOR AREA | | 15328 SQ. FT. |

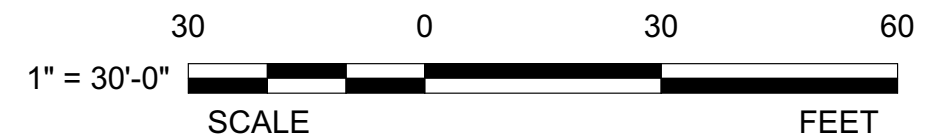
GROSS FLOOR AREA
17,796 TOTAL SQUARE FEET
AT GROUND LEVEL

Floor Plan - Ground Level





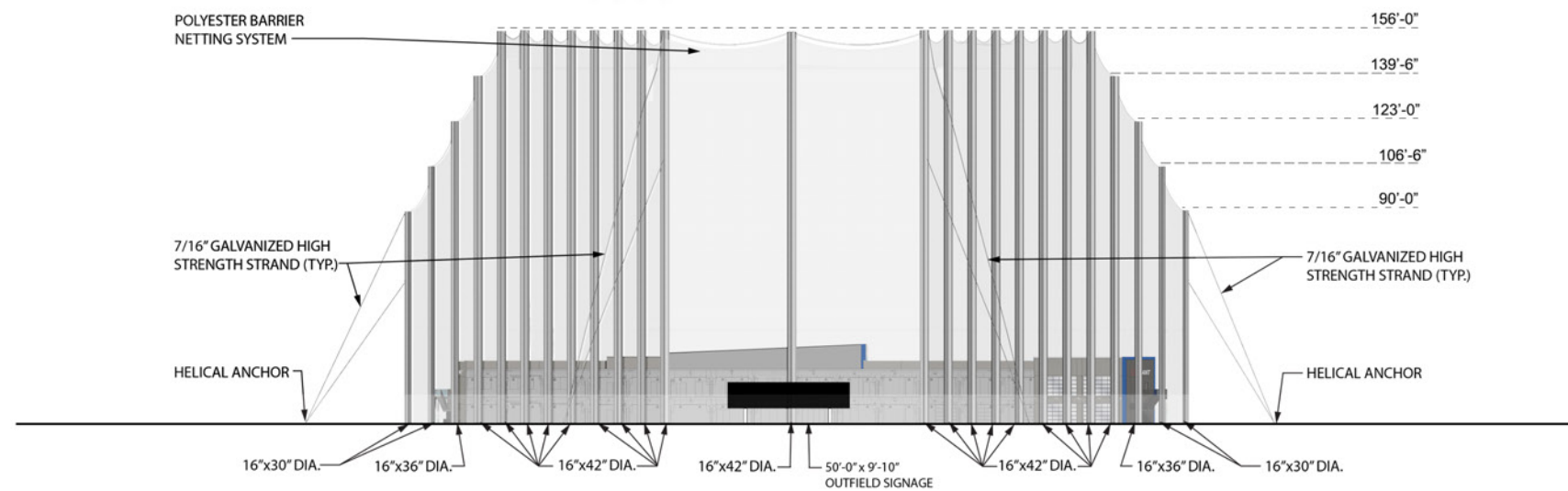
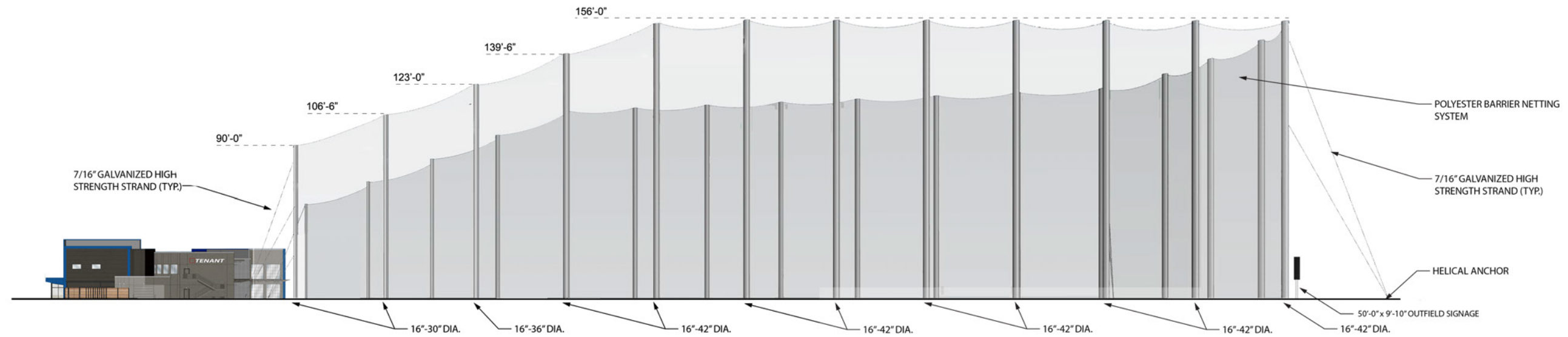
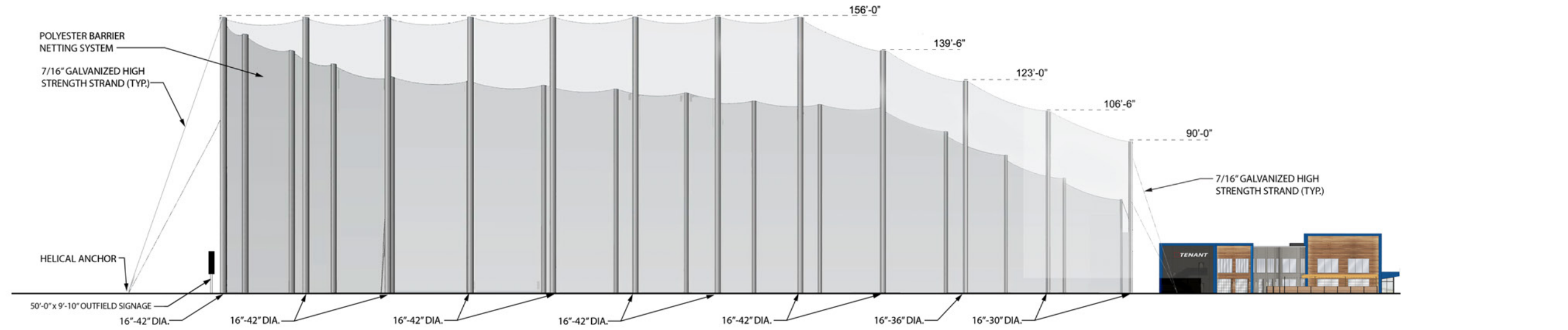
| RM # | ROOM NAME | AREA (SQ. FT.) |
|---------------------------------------|------------------|----------------------------|
| 200 | STORAGE | 480 SQ. FT. |
| 201 | EVENT SALES | 171 SQ. FT. |
| 202 | WOMEN'S TOILET | 125 SQ. FT. |
| 203 | MEN'S TOILET | 125 SQ. FT. |
| 204 | HALLWAY | (NOT INCLUDED) 198 SQ. FT. |
| 205 | HALLWAY | (NOT INCLUDED) 143 SQ. FT. |
| 206 | WELLNESS ROOM | 68 SQ. FT. |
| 207 | BEVERAGE STATION | 365 SQ. FT. |
| 208 | WORK ROOM | 308 SQ. FT. |
| 209 | EMPLOYEE LOCKERS | 83 SQ. FT. |
| 210 | SAFE ROOM | 84 SQ. FT. |
| 211 | OFFICE | 145 SQ. FT. |
| 212 | IT ROOM | 209 SQ. FT. |
| 213 | LUX SUITE | 1695 SQ. FT. |
| 214 | FAMILY TOILET | 65 SQ. FT. |
| 216 | HITTING BAY | 8524 SQ. FT. |
| 217 | HOPPER | 63 SQ. FT. |
| UPPER LEVEL NET USEABLE FLOOR AREA | | 12509 SQ. FT. |



GROSS FLOOR AREA
16,215 TOTAL SQUARE FEET
AT GROUND LEVEL

Floor Plan - Upper Level



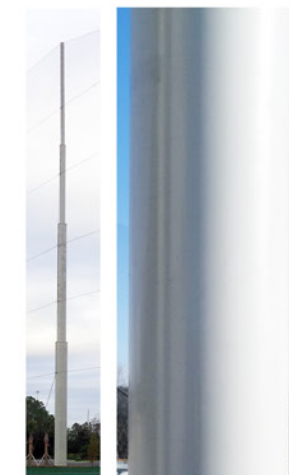


POLYESTER BARRIER NETTING SYSTEM

NETTING COMPONENT:
 -COLOR: BLACK
 -POLYESTER NETTING: 1" MESH SIZE
 -LONG STITCH KNOTLESS JOIN
 -RESIN DYE AND BONDING TREATMENT
 -116.7 LB. AVERAGE SINGLE MESH BREAK STRENGTH

ATTACHMENT TWINE/HANGING TWINE:
 -#48 BRAIDED POLYESTER TWINE
 -375 LB. TENSILE STRENGTH
 -DYE TREATED

PERIMETER BORDER ROPE & RIB-LINE/VERTICALS:
 -3/8" BRAIDED SYNTHETIC COVER
 -PARALLEL SYNTHETIC CORE
 -3,500 LB. TENSILE STRENGTH



NETTING POLE LIGHT GRAY

Net Pole - Elevations



FRONT ELEVATION: 12,699.25 SF



EXTERIOR SIGN: 242.12 SF = 1.9% OF ELEVATION

FRONT ELEVATION SIGNAGE:
 $(242.12 \text{ SF} + 114.13 \text{ SF}) / 12,699.25 \text{ SF} = 0.0280$
2.80% OF FRONT ELEVATION

EXTERIOR SIGN:
 FRONT LIT CHANNEL LETTERS MOUNTED TO CANOPY

FONT: TENANT APPROVED TYPEFACE

FACE: 3/16" 7328 WHITE POLYCARBONATE FACE W/ ARLON 2114 TRANS. BLUE VINYL SKIN 1" WEEDED OUTLINE

RETURNS: 6" .063 3003 H14 ALUM. RETURNS PTM SILVER

TRIM CAPS: 2" SILVER JEWELITE TRIM CAPS

BACKS: .063 WHITE ALUMINUM PAINTED SILVER

EXTERNAL GUSSETS: 1/8" 5052 Aluminum W/ 2" FLANGES ON ALL SIDES

INTERNAL GUSSETS: 1/8" 5052 ALUMINUM CUT TO LETTER SHAPE AT BOTTOM

ANCHORS: 3/8" DIA X 5" GALVANIZED LAG BOLTS

ILLUMINATION: WHITE LEDS-GOQ3 6-7000K

MOUNTING: MOUNTED TO BUILDING CANOPY W/ NON-CORROSIVE HARDWARE AND CUSTOM GUSSETS AS REQUIRED. ALL PENETRATIONS SEALED W/ CLEAR SILICONE. DRILL POWER HOLES AND ATTACH GUSSETS IN THE FIELD, PROVIDE SS BOLTS



EXTERIOR SIGN: 98.20 SF + 15.93 SF = 114.13 SF = 0.89% OF ELEVATION

Exterior Signage - Front Elevation



RIGHT ELEVATION: 3,577.55 SF



EXTERIOR SIGN: 85.4 SF = 2.39% OF ELEVATION

RIGHT ELEVATION SIGNAGE:
 85.4 SF / 3,577.55 SF = 0.0239
 2.39% OF LEFT ELEVATION

Exterior Signage - Right Elevation



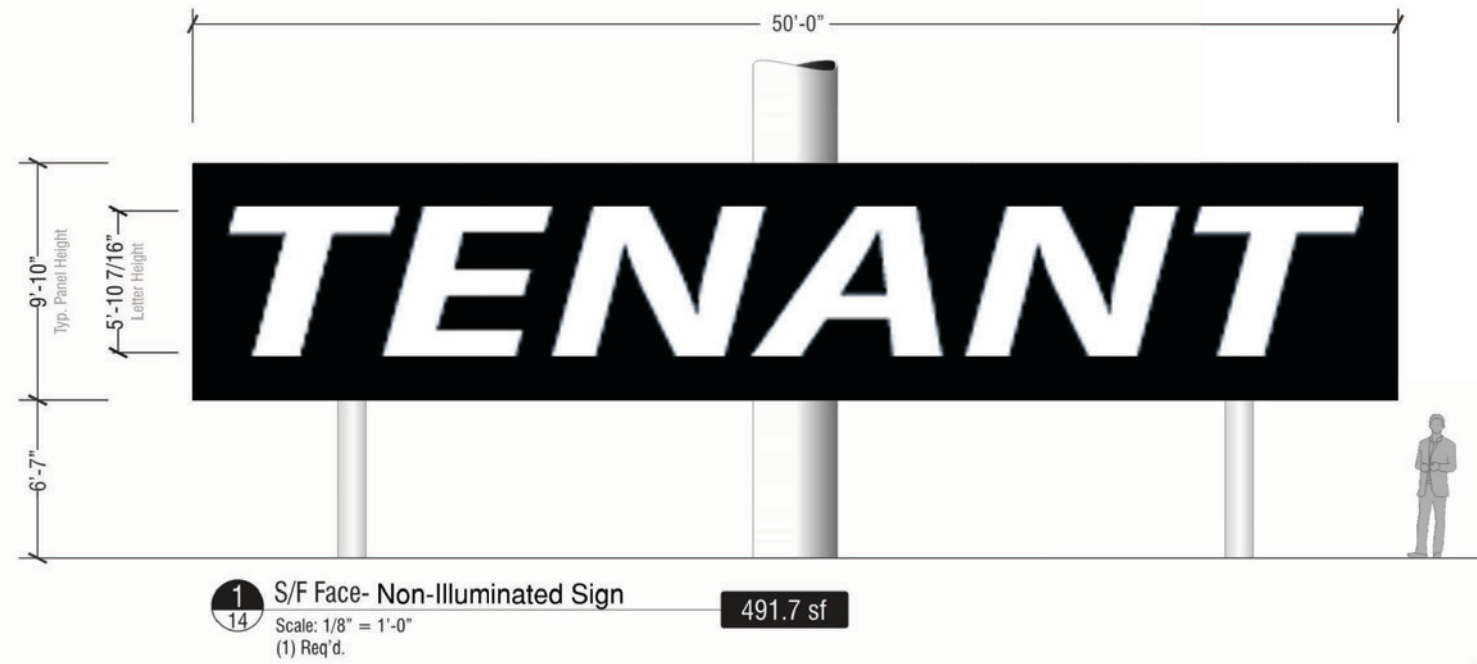
LEFT ELEVATION: 4,898.48 SF



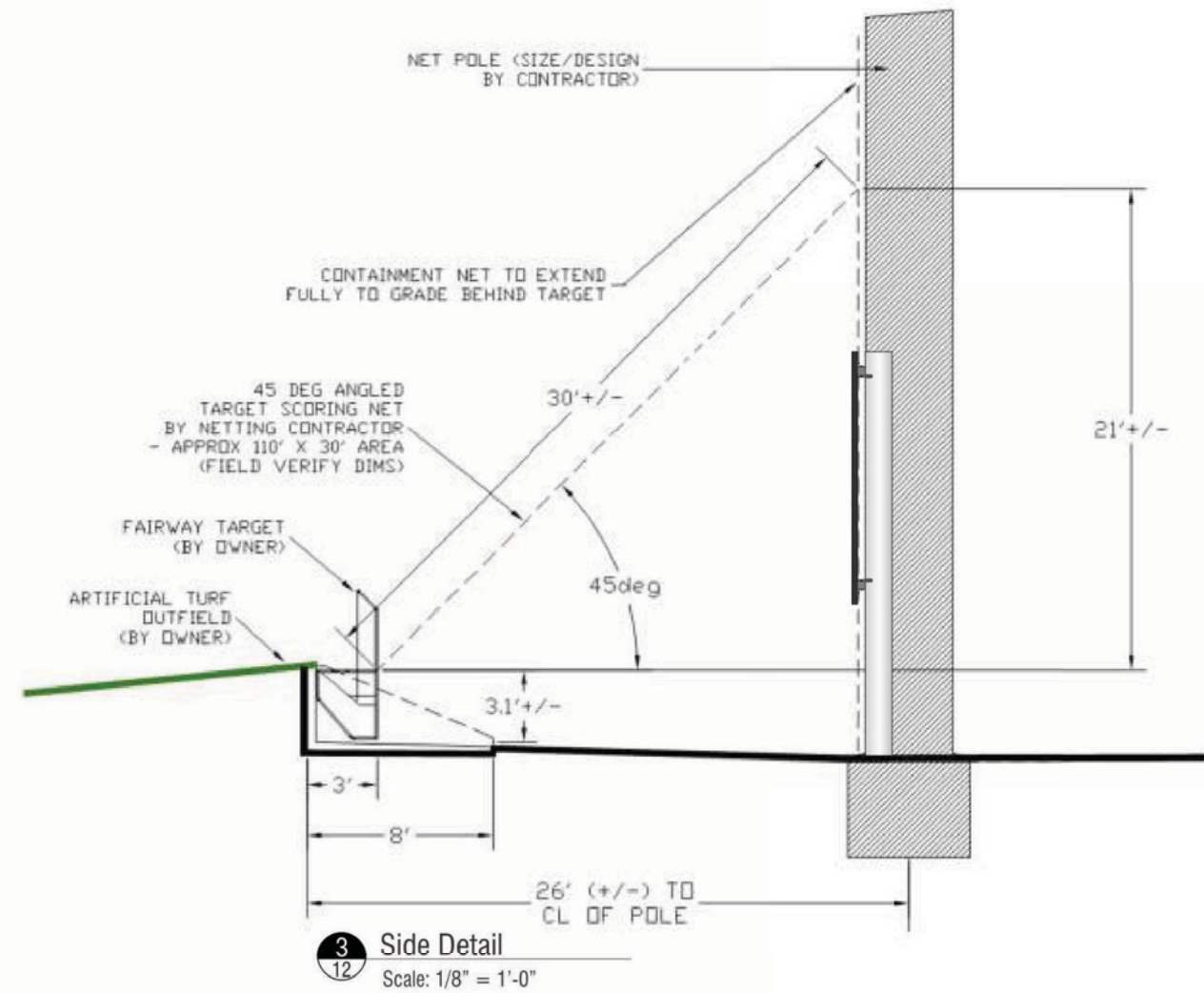
EXTERIOR SIGN: 85.4 SF = 1.74% OF ELEVATION

LEFT ELEVATION SIGNAGE:
 85.4 SF / 4,898.48 SF = 0.0174
 1.74% OF RIGHT ELEVATION

Exterior Signage - Left Elevation



Proposed - Conceptual Rendering



Exterior Signage - Outfield