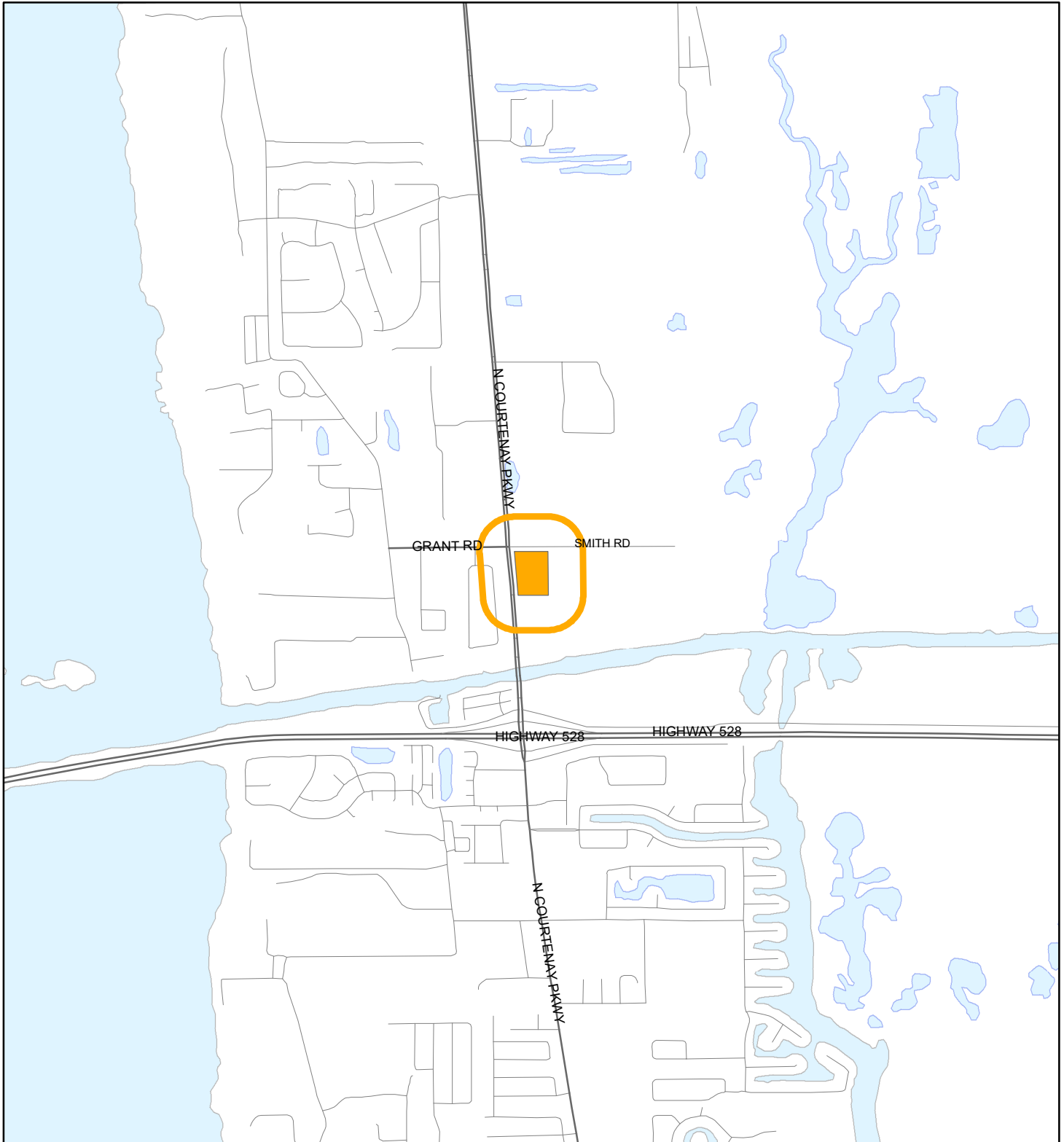


# LOCATION MAP

SHAH, SUMMIT; LAKE GENEVA GROUP LLC  
22Z00063



1:24,000 or 1 inch = 2,000 feet

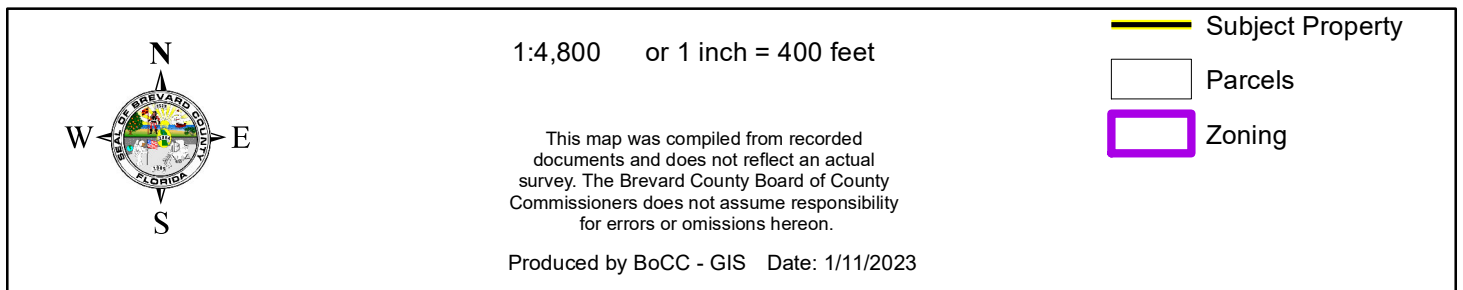
Buffer Distance: 500 feet

This map was compiled from recorded documents and does not reflect an actual survey. The Brevard County Board of County Commissioners does not assume responsibility for errors or omissions hereon.

Produced by BoCC - GIS Date: 1/11/2023

Buffer  
Subject Property

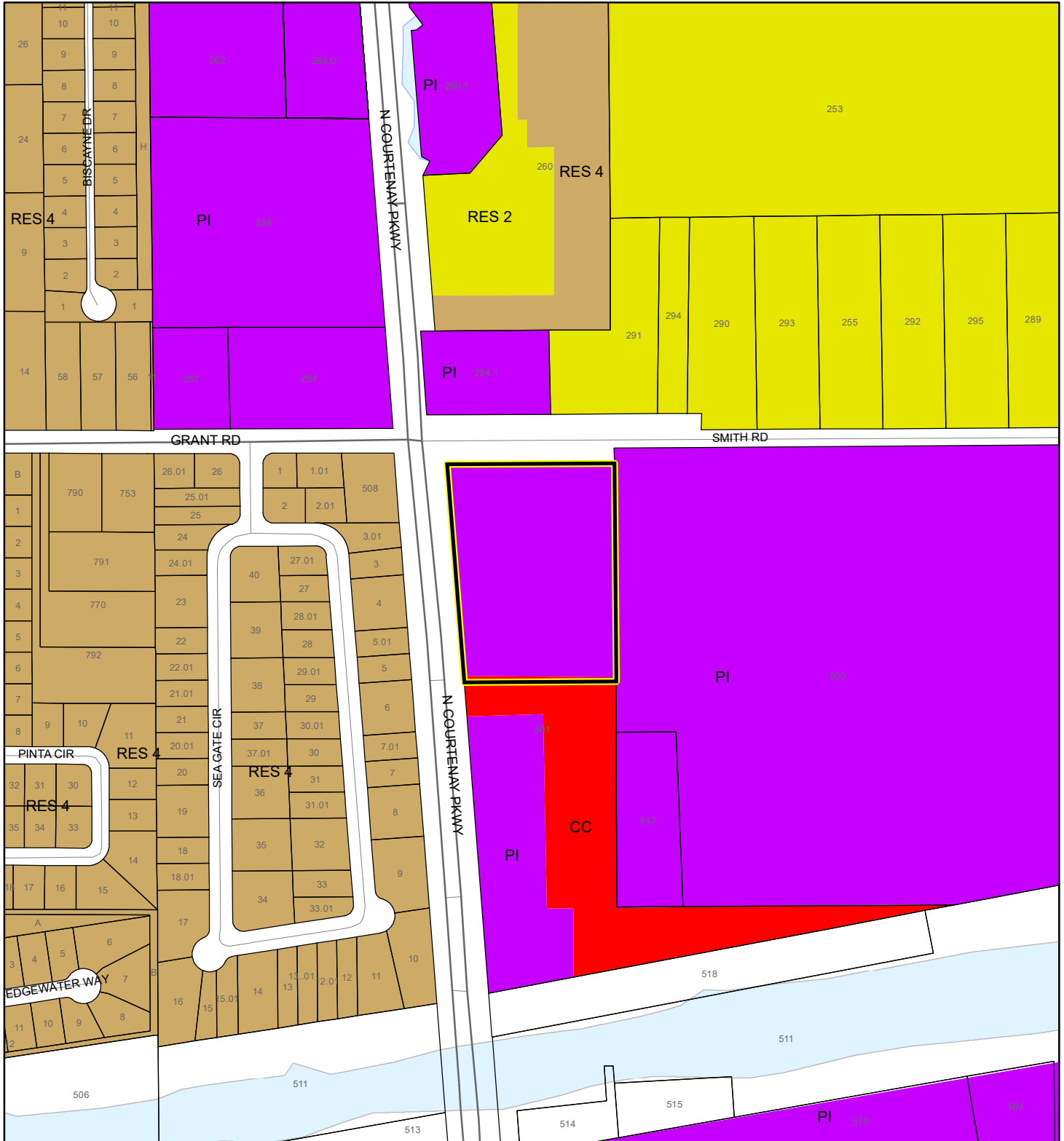
22Z00063





# FUTURE LAND USE MAP

SHAH, SUMMIT; LAKE GENEVA GROUP LLC

22Z00063



1:4,800 or 1 inch = 400 feet

 Subject Property  
 Parcels

This map was compiled from recorded documents and does not reflect an actual survey. The Brevard County Board of County Commissioners does not assume responsibility for errors or omissions hereon.

Produced by BoCC - GIS Date: 1/11/2023



# AERIAL MAP

SHAH, SUMMIT; LAKE GENEVA GROUP LLC

22Z00063




1:4,800 or 1 inch = 400 feet

PHOTO YEAR: 2022

This map was compiled from recorded documents and does not reflect an actual survey. The Brevard County Board of County Commissioners does not assume responsibility for errors or omissions hereon.

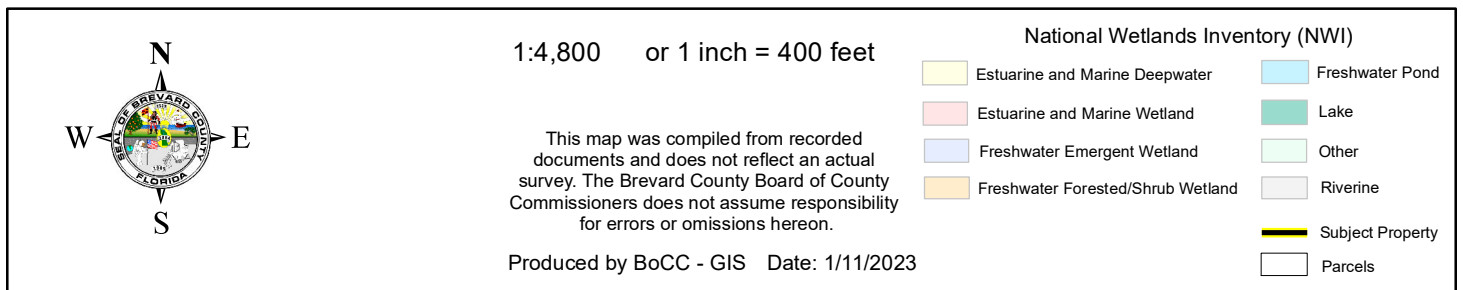
Produced by BoCC - GIS Date: 1/11/2023

 Subject Property

 Parcels



22Z00063



# SJRWMD FLUCCS WETLANDS - 6000 Series MAP

SHAH, SUMMIT; LAKE GENEVA GROUP LLC

22Z00063



1:4,800 or 1 inch = 400 feet

This map was compiled from recorded documents and does not reflect an actual survey. The Brevard County Board of County Commissioners does not assume responsibility for errors or omissions hereon.

Produced by BoCC - GIS Date: 1/11/2023

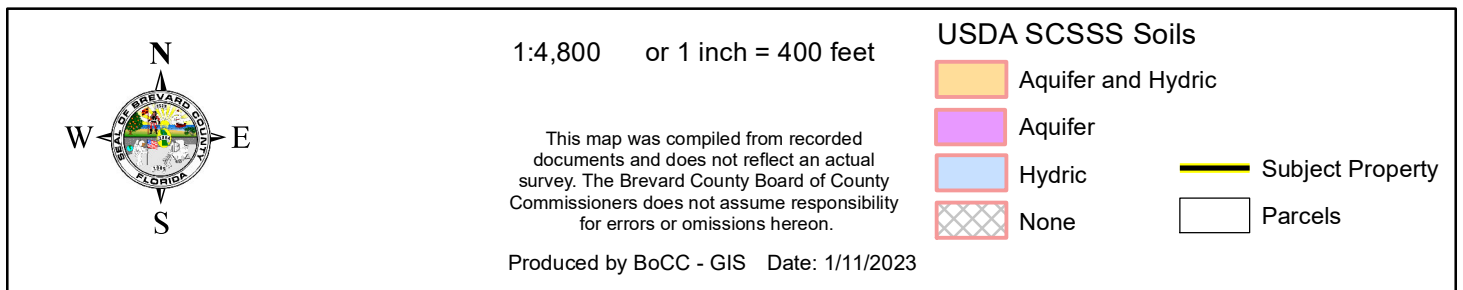
## SJRWMD FLUCCS WETLANDS

- Wetland Hardwood Forests - Series 6100
- Wetland Coniferous Forest - Series 6200
- Wetland Forested Mixed - Series 6300
- Vegetated Non-Forested Wetlands - Series 6400
- Non-Vegetated Wetland - Series 6500

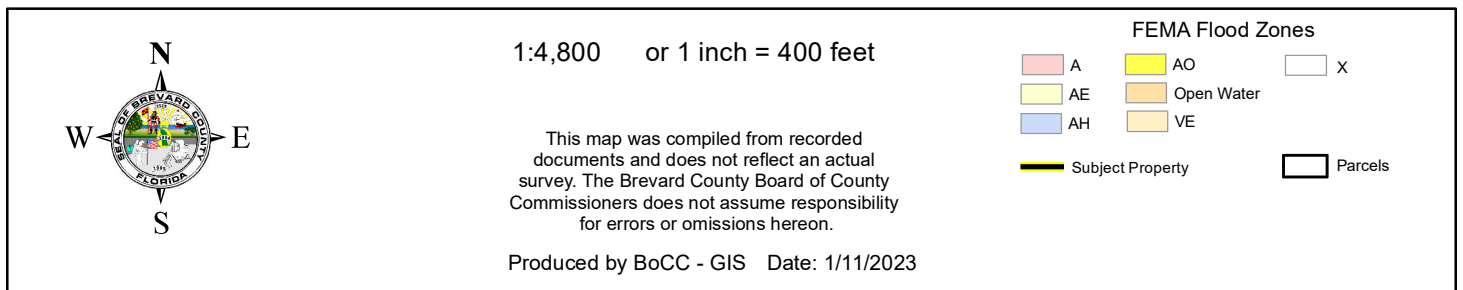
Subject Property

Parcels

22Z00063



22Z00063

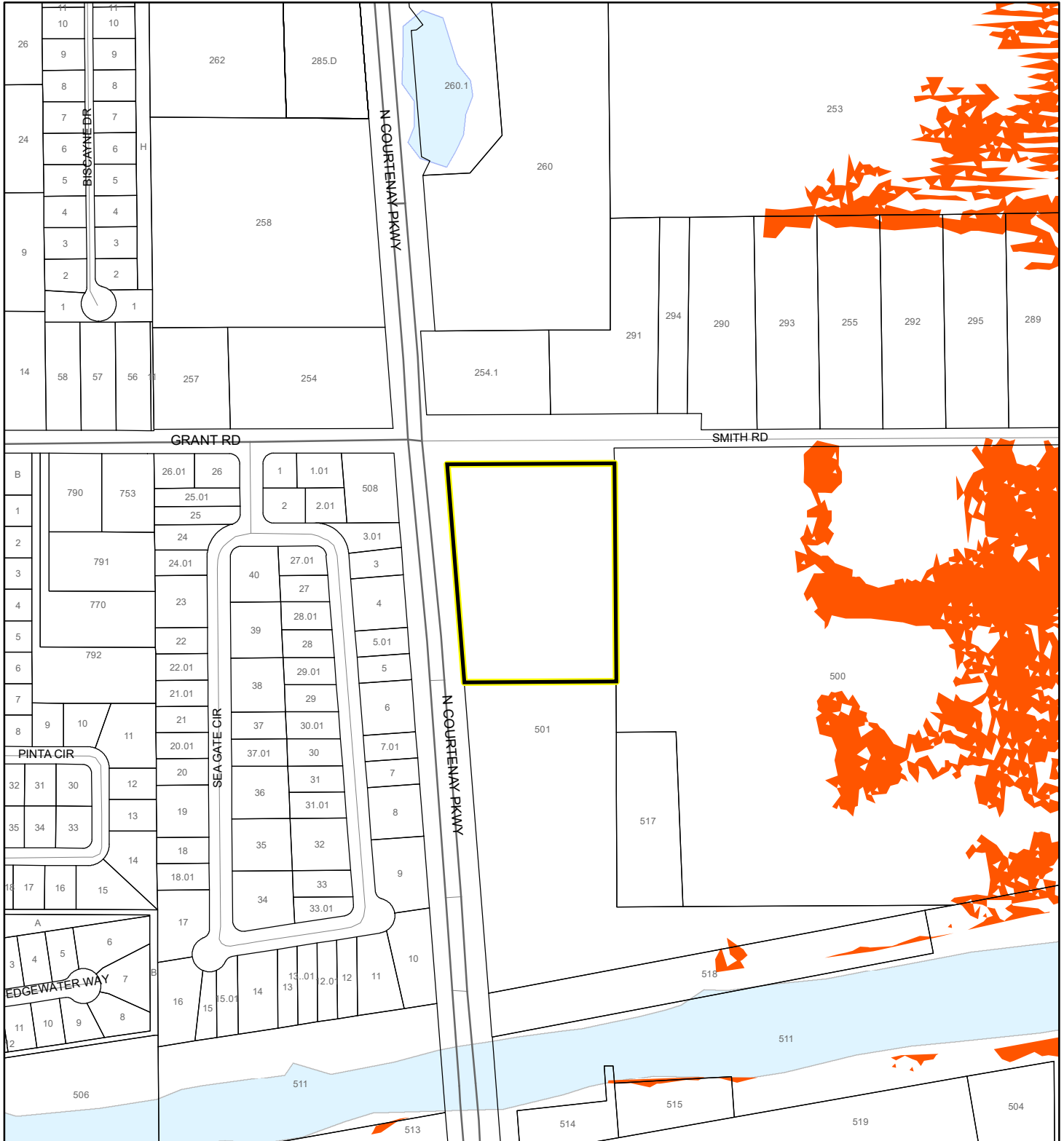




# COASTAL HIGH HAZARD AREA MAP

SHAH, SUMMIT; LAKE GENEVA GROUP LLC

22Z00063



1:4,800 or 1 inch = 400 feet


This map was compiled from recorded documents and does not reflect an actual survey. The Brevard County Board of County Commissioners does not assume responsibility for errors or omissions hereon.

Produced by BoCC - GIS Date: 1/11/2023

 Subject Property

 Parcels

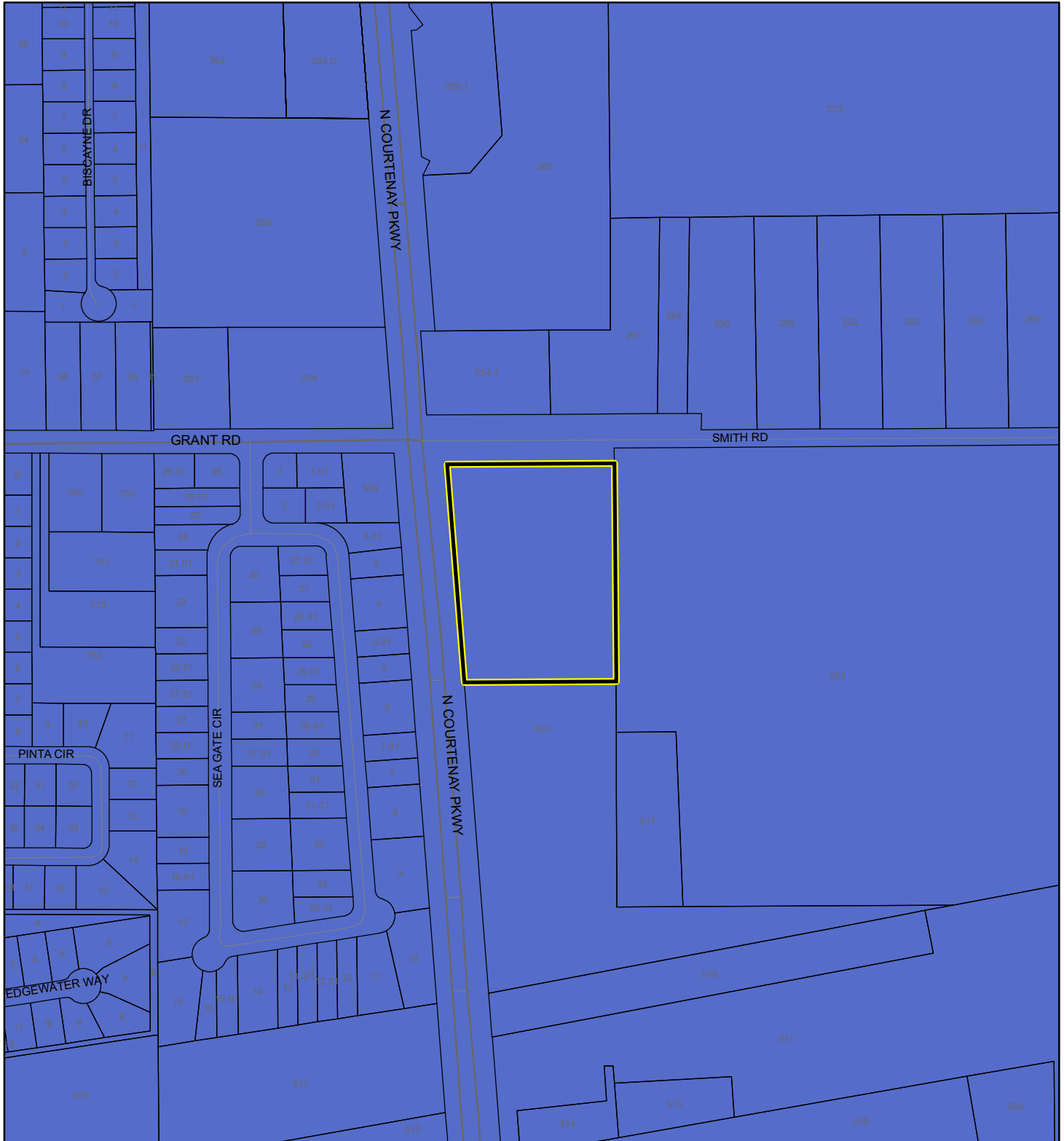
**Coastal High Hazard Area**

 SurgeZoneCat1

# INDIAN RIVER LAGOON SEPTIC OVERLAY MAP

SHAH, SUMMIT; LAKE GENEVA GROUP LLC

22Z00063



1:4,800 or 1 inch = 400 feet

This map was compiled from recorded documents and does not reflect an actual survey. The Brevard County Board of County Commissioners does not assume responsibility for errors or omissions hereon.

Produced by BoCC - GIS Date: 1/11/2023

 Subject Property

 Parcels

**Septic Overlay**

 40 Meters

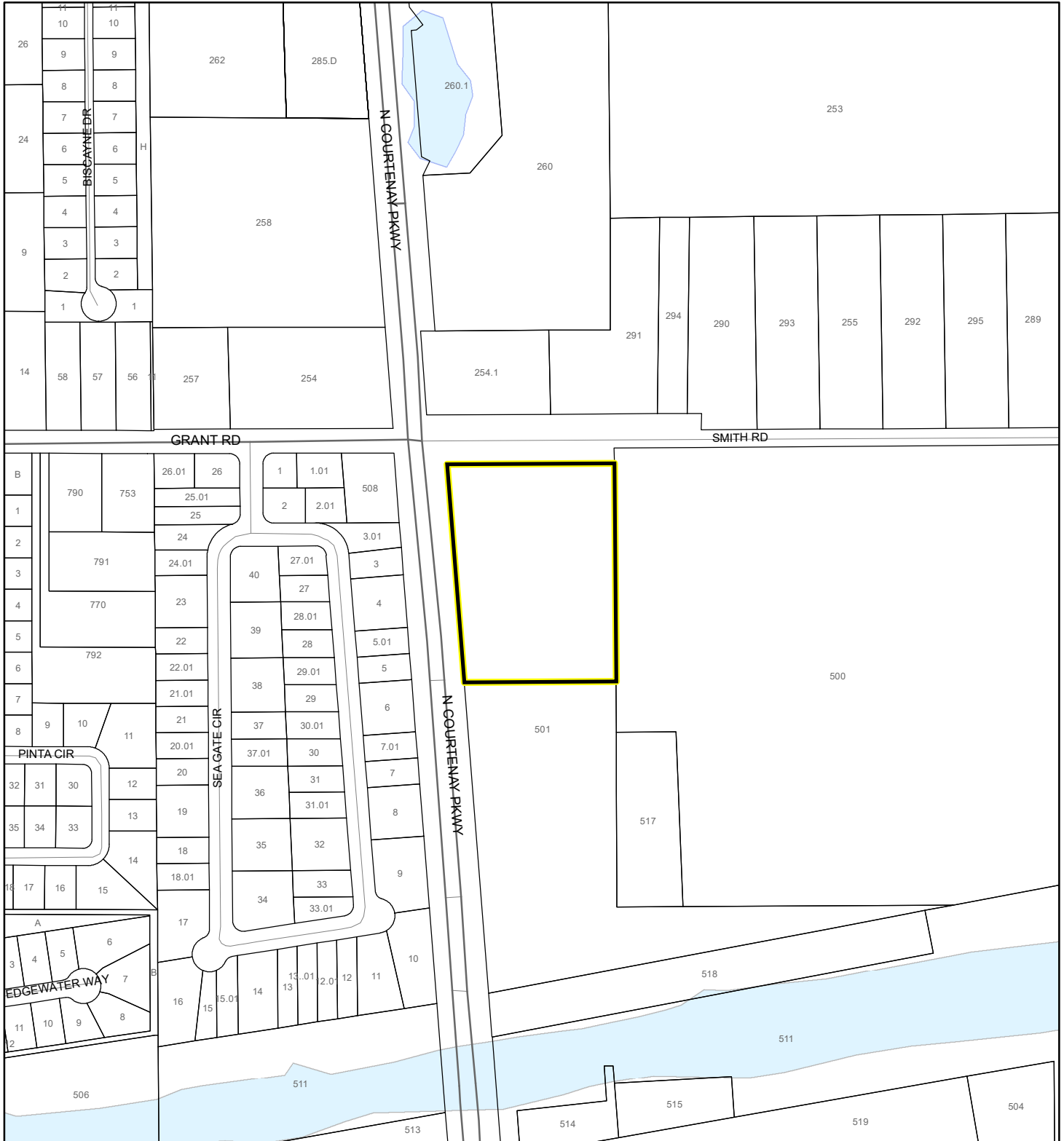
 60 Meters

 All Distances

# EAGLE NESTS MAP

SHAH, SUMMIT; LAKE GENEVA GROUP LLC

22Z00063



1:4,800 or 1 inch = 400 feet

This map was compiled from recorded documents and does not reflect an actual survey. The Brevard County Board of County Commissioners does not assume responsibility for errors or omissions hereon.

Produced by BoCC - GIS Date: 1/11/2023

 Subject Property

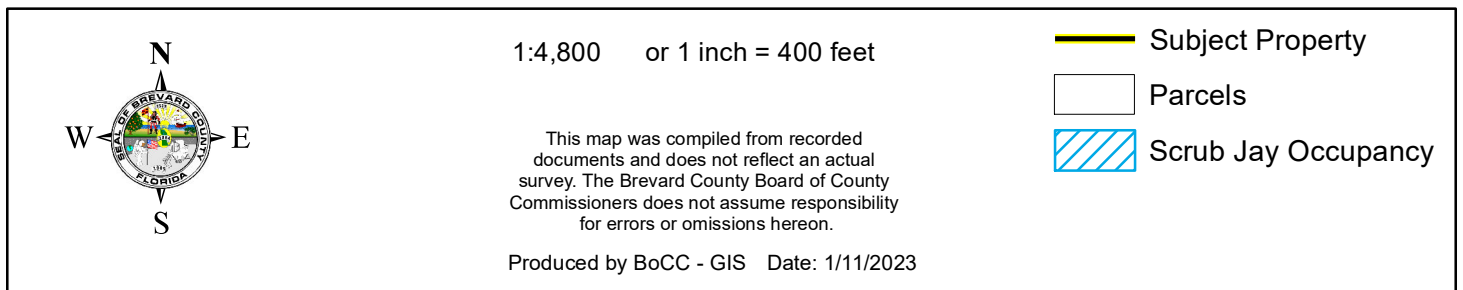
 Parcels



Eagle Nests  
FWS 2010



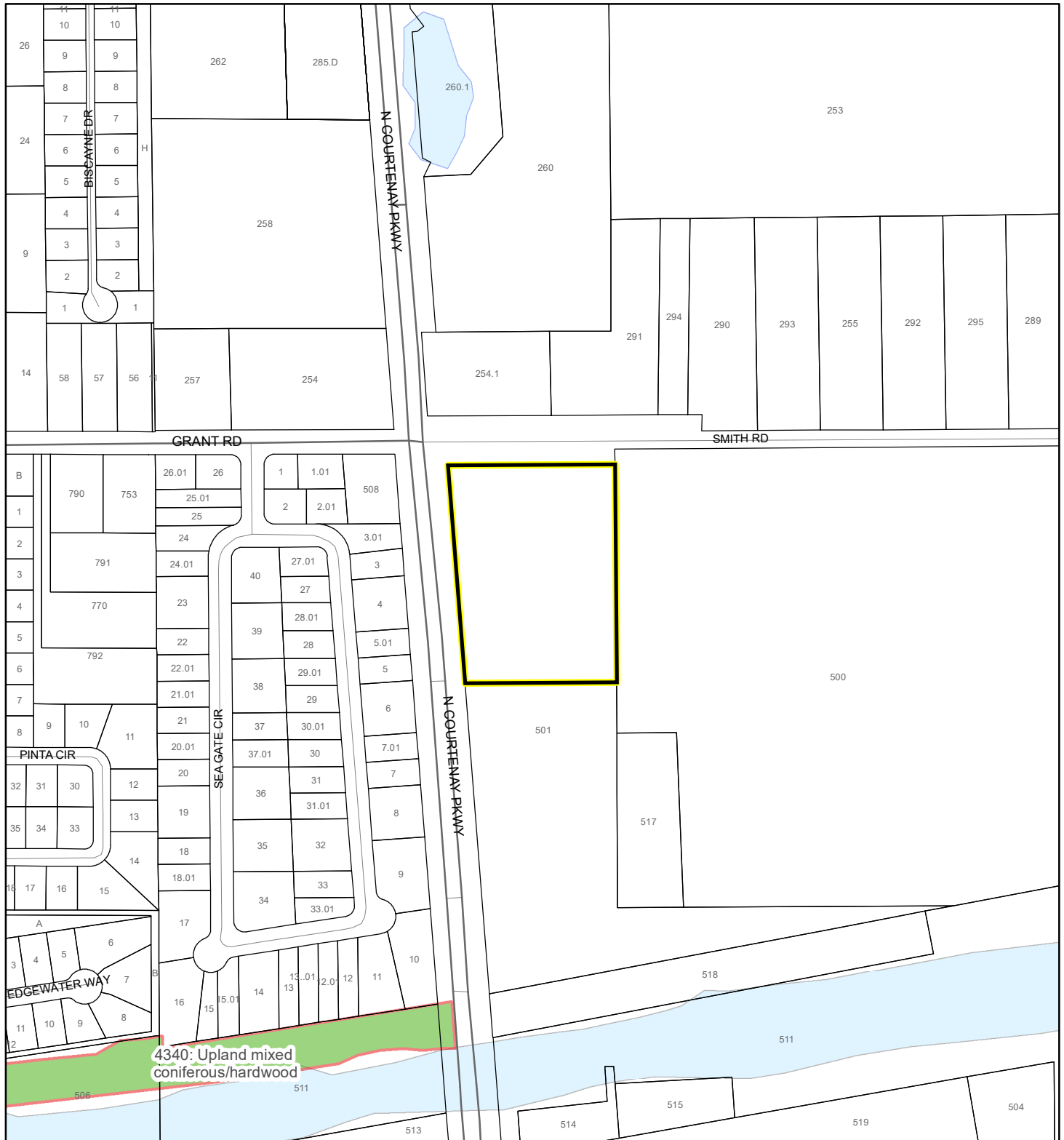
22Z00063



# SJRWMD FLUCCS UPLAND FORESTS - 4000 Series MAP

SHAH, SUMMIT; LAKE GENEVA GROUP LLC

22Z00063



1:4,800 or 1 inch = 400 feet

This map was compiled from recorded documents and does not reflect an actual survey. The Brevard County Board of County Commissioners does not assume responsibility for errors or omissions hereon.

Produced by BoCC - GIS Date: 1/11/2023

## SJRWMD FLUCCS Upland Forests

- Upland Coniferous Forest - 4100 Series
- Upland Hardwood Forest - 4200 Series
- Upland Mixed Forest - 4300 Series
- Tree Plantations - 4400 Series

Subject Property  Parcels