

School Board of Brevard County

2700 Judge Fran Jamieson Way • Viera, FL 32940-6699
Dr. Mark J. Rendell, Ed.D., Superintendent



November 20, 2025

Ms. Desiree Jackson, Planner I
Planning & Development Department
Brevard County Board of County Commissioners
2725 Judge Fran Jamieson Way
Building A, Room 114
Viera, Florida 32940

**RE: Proposed Range Water Merritt Island Development
School Impact Analysis –Capacity Determination CD-2025-23**

Dear Ms. Jackson,

We received a *School Facility Planning & Concurrency Application* for the referenced development on November 19, 2025 for the subject property consisting of Tax Account 2412106 (Parcel ID: 24-36-14-00-259), containing approximately 11.24 acres in District 2, Brevard County, Florida. The maximum number of units permitted for development by this proposal is 222 multi-family units. The School Impact Analysis of this portion of the proposed development has been undertaken and the following information is provided for your use.

The calculations used to analyze the prospective student impact are consistent with the methodology outlined in Section 13.2 and Amended Appendix “A”-School District Student Generation Multiplier (approved April 11, 2022) of the *Interlocal Agreement for Public School Facility Planning & School Concurrency (ILA-2014)*. The following capacity analysis is performed using capacities/projected students as shown in years 2025-26 to 2029-30 of the *Brevard County Public Schools Financially Feasible Plan for School Years 2024-25 to 2029-30* which is attached for reference.

Multi-Family Apartments	222		
Students Generated	Student Generation Rates	Calculated Students Generated	Rounded Number of Students Generated
Elementary	0.11	24.42	24
Middle	0.02	4.44	4
High	0.05	11.1	11
Total	0.18		39

Facilities Services, Planning & Project Management
Phone: (321) 633-1000, x11418



An Equal Opportunity Employer

School Board of Brevard County

2700 Judge Fran Jamieson Way • Viera, FL 32940-6699
Dr. Mark J. Rendell, Ed.D., Superintendent



At the October 20, 2025, Capital Outlay Committee (COC) meeting, committee members reviewed and discussed methods to incorporate charter school capacity into the district's school concurrency review process. The COC unanimously approved using the *Brevard*

Charter Schools From Analysis, Fall Final Membership Count, which is published in the District's Student Accommodation Plan annually, to determine charter percentages. The Charter School From Analysis is attached for your reference.

The following analysis is performed using the annually published table from the District's *SY2025-2026 Student Accommodation Plan*, Section 4, the *Brevard Charter Schools: From Analysis, Fall Final Membership Count*, which illustrates the number of students from each traditional school concurrency service area (CSA) (attendance boundary or zone) attending the district's public charter schools and the total percentage of students from each school attendance boundary currently attending charter schools. The percentages shown are the actual percentage of resident public school students attending charter schools from each school CSA. The number of students highlighted in green indicates the number of students expected to attend Charter schools which are subtracted from the projected number of students affecting the BPS traditional schools affected by the development.



School Board of Brevard County

2700 Judge Fran Jamieson Way • Viera, FL 32940-6699
Dr. Mark J. Rendell, Ed.D., Superintendent



FISH Capacity (including relocatable classrooms) from the Financially Feasible Plan (FFP) Data and Analysis for School Years 2025-26 to 2029-30

School		2025-26	2026-27	2027-28	2028-29	2029-30
Carroll	Affected	751	751	751	751	751
Jefferson	School	873	873	873	873	873
Merritt Island	(CSAs)	1,966	1,966	1,966	1,966	1,966

FISH Capacity

Projected Student Membership

School		2025-26	2026-27	2027-28	2028-29	2029-30
Carroll		624	607	576	546	488
Jefferson		481	450	437	513	528
Merritt Island		1,328	1,272	1,231	1,149	1,135

Projected Number of Students

Students Generated by Newly Issued SCADL Reservations Since FFP

School		2025-26	2026-27	2027-28	2028-29	2029-30
Carroll		-	-	22	22	22
Jefferson		2	2	2	2	2
Merritt Island		3	3	14	14	14

+ Students expected from previous reservations

Cumulative Total Public School Students Generated by Proposed Development

School		2025-26	2026-27	2027-28	2028-29	2029-30
Carroll		-	-	24	24	24
Jefferson		-	-	4	4	4
Merritt Island		-	-	11	11	11

+ Total number of students expected to be generated from this development

Cumulative Public CHARTER School Students Generated by Proposed Development

School	% to Charters	2025-26	2026-27	2027-28	2028-29	2029-30
Carroll	1.4%	-	-	0	0	0
Jefferson	1.4%	-	-	0	0	0
Merritt Island	0.0%	-	-	-	-	-

- % of students leaving each CSA to attend Charter

% of students leaving each CSA to attend Charter Schools

Total Projected Student Membership (includes Cumulative Impact of Proposed Development)

School		2025-26	2026-27	2027-28	2028-29	2029-30
Carroll		624	607	622	592	534
Jefferson		483	452	443	519	534
Merritt Island		1,331	1,275	1,256	1,174	1,160

= Total number of students projected to BPS Traditional Schools

Projected Available Capacity = FISH Capacity - Total Projected Student Membership

School		2025-26	2026-27	2027-28	2028-29	2029-30
Carroll		127	144	129	159	217
Jefferson		390	421	430	354	339
Merritt Island		635	691	710	792	806

Capacity - Total (Table 1-Table 6) = Number of available seats

Facilities Services, Planning & Project Management
Phone: (321) 633-1000, x11418



School Board of Brevard County

2700 Judge Fran Jamieson Way • Viera, FL 32940-6699
Dr. Mark J. Rendell, Ed.D., Superintendent



At this time, Lewis Carroll Elementary School, Thomas Jefferson Middle School and Merritt Island Senior High School are projected to have enough capacity for the total of projected and potential students from the Range Water Merritt Island development.

This is a **non-binding** review; a *Concurrency Determination* must be performed by the School District prior to a Final Development Order and the issuance of a Concurrency Evaluation Finding of Nondeficiency by the Local Government.

We appreciate the opportunity to review this proposed project. Please let us know if you require additional information.

Sincerely,

Karen M. Black, AICP
Manager – Facilities Planning & Intergovernmental Coordination
Planning & Project Management, Facilities Services

Enclosure: *Brevard County Public Schools Financially Feasible Plan for School
Years 2024-25 to 2029-30
Brevard Public Schools: Brevard Charter Schools: From Analysis, Fall
Final Membership Count-October 14, 2024*

Copy:

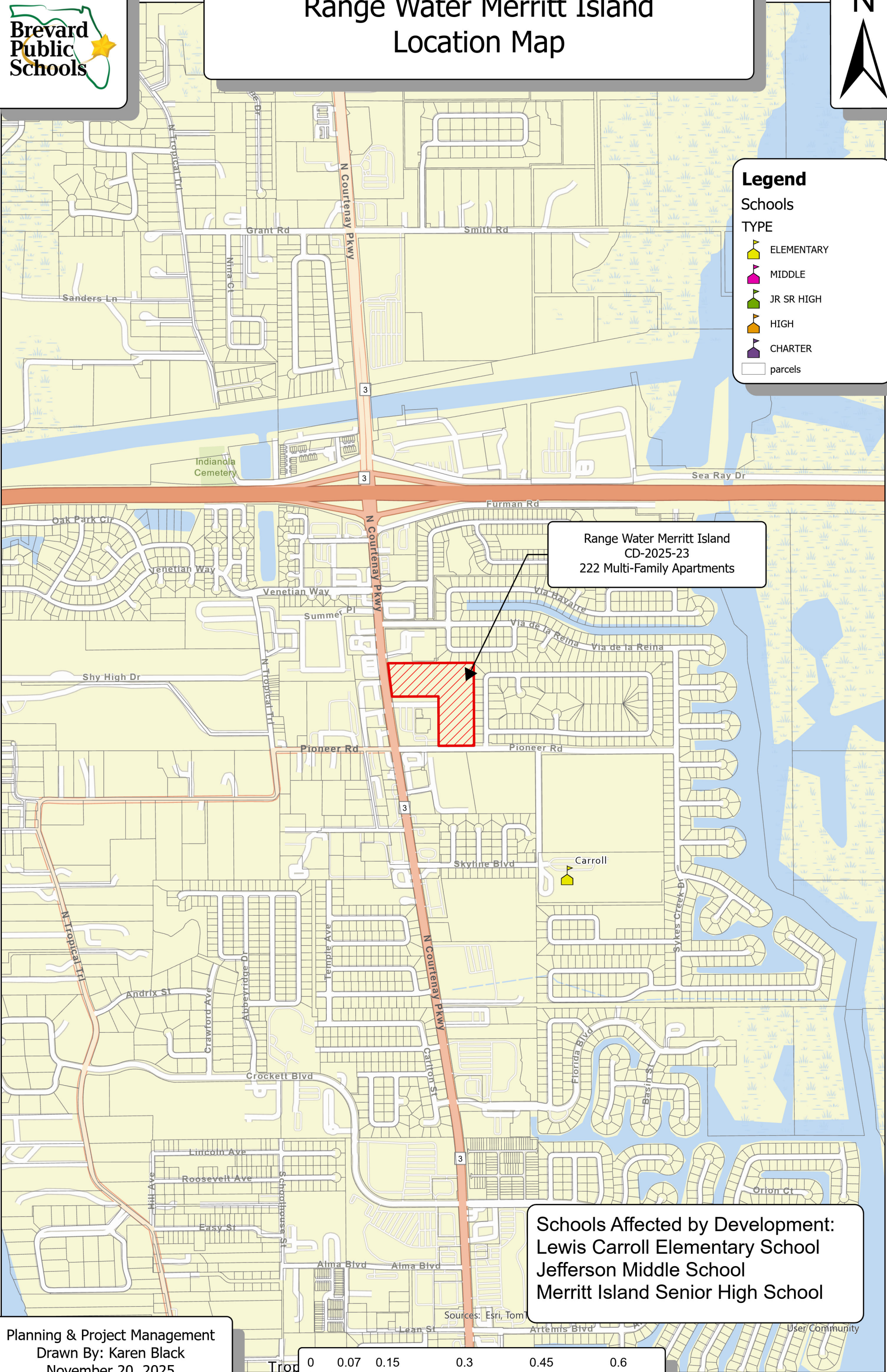
Susan Hann, P.E., AICP, Assistant Superintendent of Facility Services
File CD-2025-23

David G. Lindemann, AICP
Director of Planning & Project Management, Facilities Services
File CD-2025-23





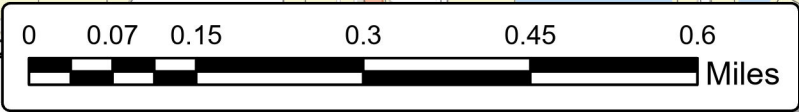
Range Water Merritt Island Location Map



Range Water Merritt Island
CD-2025-23
222 Multi-Family Apartments

Schools Affected by Development:
Lewis Carroll Elementary School
Jefferson Middle School
Merritt Island Senior High School

Planning & Project Management
Drawn By: Karen Black
November 20, 2025



Brevard County Public Schools

Financially Feasible Plan To Maintain Utilization Rates Lower than the 100% Level of Service Data and Analysis for School Years 2024-25 to 2029-30



Summary				2024-25			2025-26			2026-27			2027-28			2028-29			2029-30		
Highest Utilization Elementary Schools:				105%			99%			100%			100%			100%			100%		
Highest Utilization Middle Schools:				83%			100%			99%			97%			97%			99%		
Highest Utilization Jr / Sr High Schools:				81%			81%			80%			80%			77%			75%		
Highest Utilization High Schools:				95%			97%			98%			100%			99%			100%		
School	Type	Grades	Utilization Factor	School Year 2024-25			School Year 2025-26			School Year 2026-27			School Year 2027-28			School Year 2028-29			School Year 2029-30		
				FISH Capacity	10/14/24 Member-ship	Total Capacity Utilization	Future FISH Capacity	Student Projection	Total Capacity Utilization	Future FISH Capacity	Student Projection	Total Capacity Utilization	Future FISH Capacity	Student Projection	Total Capacity Utilization	Future FISH Capacity	Student Projection	Total Capacity Utilization	Future FISH Capacity	Student Projection	Total Capacity Utilization
Elementary School Concurrency Service Areas																					
Allen	Elementary	PK-6	100%	751	620	83%	751	635	85%	751	650	87%	751	680	91%	751	695	93%	751	710	95%
Andersen	Elementary	K-6	100%	757	481	64%	757	457	60%	757	455	60%	757	419	55%	757	401	53%	757	390	52%
Apollo	Elementary	K-6	100%	902	596	66%	902	579	64%	902	550	61%	902	518	57%	902	494	55%	902	480	53%
Atlantis	Elementary	PK-6	100%	739	653	88%	739	632	86%	739	613	83%	739	599	81%	739	590	80%	739	578	78%
Audubon	Elementary	PK-6	100%	761	415	55%	761	420	55%	761	422	55%	761	413	54%	761	398	52%	761	386	51%
Cambridge	Elementary	PK-6	100%	787	477	61%	787	491	62%	787	507	64%	787	538	68%	787	556	71%	787	566	72%
Cape View	Elementary	PK-6	100%	570	273	48%	570	263	46%	570	264	46%	570	279	49%	570	277	49%	570	276	48%
Carroll	Elementary	K-6	100%	751	636	85%	751	624	83%	751	607	81%	751	576	77%	751	546	73%	751	488	65%
Challenger 7	Elementary	PK-6	100%	573	431	75%	573	408	71%	573	393	69%	573	360	63%	573	345	60%	573	346	60%
Columbia	Elementary	PK-6	100%	751	573	76%	751	638	85%	751	682	91%	751	732	97%	795	792	100%	839	836	100%
Coquina	Elementary	K-6	100%	711	465	65%	711	472	66%	711	464	65%	711	474	67%	711	468	66%	711	473	67%
Creel	Elementary	PK-6	100%	1,114	540	48%	1,114	536	48%	1,114	531	48%	1,114	530	48%	1,114	511	46%	1,114	509	46%
Croton	Elementary	PK-6	100%	795	464	58%	795	451	57%	795	470	59%	795	469	59%	795	482	61%	795	488	61%
Discovery	Elementary	PK-6	100%	980	680	69%	980	716	73%	980	752	77%	980	789	81%	980	791	81%	980	809	83%
Endeavour	Elementary	PK-6	100%	968	744	77%	968	751	78%	968	750	77%	968	766	79%	968	729	75%	968	708	73%
Enterprise	Elementary	K-6	100%	729	597	82%	729	585	80%	729	563	77%	729	557	76%	729	557	76%	729	554	76%
Fairglen	Elementary	PK-6	100%	789	466	59%	789	460	58%	789	470	60%	789	464	59%	789	463	59%	789	451	57%
Gemini	Elementary	K-6	100%	711	410	58%	711	401	56%	711	374	53%	711	349	49%	711	332	47%	711	309	43%
Golfview	Elementary	PK-6	100%	777	448	58%	777	474	61%	777	480	62%	777	490	63%	777	500	64%	777	517	67%
Harbor City	Elementary	PK-6	100%	629	390	62%	629	399	63%	629	428	68%	629	452	72%	629	464	74%	629	458	73%
Holland	Elementary	PK-6	100%	605	444	73%	605	416	69%	605	408	67%	605	379	63%	605	364	60%	605	351	58%
Imperial Estates	Elementary	K-6	100%	729	607	83%	729	628	86%	729	607	83%	729	598	82%	729	574	79%	729	562	77%
Indianlantic	Elementary	K-6	100%	798	664	83%	798	646	81%	798	641	80%	798	599	75%	798	606	76%	798	584	73%
Jupiter	Elementary	PK-6	100%	930	856	92%	974	946	97%	1,018	979	96%	1,062	1,048	99%	1,106	1,059	96%	1,150	1,149	100%
Lockmar	Elementary	PK-6	100%	892	573	64%	892	567	64%	892	585	66%	892	586	66%	892	591	66%	892	595	67%
Longleaf	Elementary	PK-6	100%	790	579	73%	790	562	71%	790	549	69%	790	524	66%	790	528	67%	790	535	68%
Manatee	Elementary	K-6	100%	998	910	91%	998	900	90%	998	930	93%	998	941	94%	998	932	93%	998	887	89%
McAuliffe	Elementary	PK-6	100%	838	687	82%	838	705	84%	838	726	87%	838	745	89%	838	765	91%	838	777	93%
Meadowlane Intermediate	Elementary	3-6	100%	1,004	778	77%	1,004	764	76%	1,004	742	74%	1,004	712	71%	1,004	704	70%	1,004	708	71%
Meadowlane Primary	Elementary	K-6	100%	824	604	73%	824	553	67%	824	565	69%	824	596	72%	824	598	73%	824	591	72%
Mila	Elementary	PK-6	100%	707	382	54%	707	384	54%	707	377	53%	707	367	52%	707	329	47%	707	319	45%
Mims	Elementary	PK-6	100%	725	395	54%	725	420	58%	725	442	61%	725	443	61%	725	460	63%	725	476	66%
Oak Park	Elementary	PK-6	100%	968	473	49%	968	472	49%	968	490	51%	968	480	50%	968	482	50%	968	495	51%
Ocean Breeze	Elementary	PK-6	100%	654	499	76%	654	488	75%	654	463	71%	654	448	69%	654	418	64%	654	395	60%
Palm Bay Elem	Elementary	PK-6	100%	983	583	59%	983	585	60%	983	601	61%	983	605	62%	983	591	60%	983	587	60%
Pinewood	Elementary	PK-6	100%	613	501	82%	613	519	85%	613	535	87%	613	537	88%	613	541	88%	613	551	90%
Port Malabar	Elementary	PK-6	100%	852	628	74%	852	662	78%	852	679	80%	852	725	85%	852	797	94%	852	820	96%
Quest	Elementary	PK-6	100%	932	690	74%	932	675	72%	932	674	72%	932	662	71%	932	637	68%	932	630	68%
Riviera	Elementary	PK-6	100%	733	721	98%	777	765	98%	821	814	99%	887	883	100%	931	911	98%	931	900	97%
Roosevelt	Elementary	K-6	100%	599	275	46%	599	295	49%	599	294	49%	599	294	49%	599	305	51%	599	314	52%
Sabal	Elementary	PK-6	100%	785	493	63%	785	495	63%	785	499	64%	785	501	64%	785	476	61%	785	457	58%
Saturn	Elementary	PK-6	100%	998	622	62%	998	634	64%	998	633	63%	998	622	62%	998	600	60%	998	579	58%
Sea Park	Elementary	PK-6	100%	461	308	67%	461	308	67%	461	313	68%	461	310	67%	461	305	66%	461	301	65%
Sherwood	Elementary	PK-6	100%	609	494	81%	609	511	84%	609	520	85%	609	522	86%	609	522	86%	609	532	87%
Sunrise	Elementary	PK-6	100%	957	907	95%	1,001	984	98%	1,045	1,029	98%	1,133	1,120	99%	1,243	1,236	99%	1,353	1,338	99%
Suntree	Elementary	K-6	100%	755	585	77%	755	574	76%	755	555	74%	755	532	70%	755	530	70%	755	536	71%
Surfside	Elementary	K-6	100%	541	404	75%	541	412	76%	541	410	76%	541	392	72%	541	391	72%	541	390	72%
Tropical	Elementary	K-6	100%	910	569	63%	910	550	60%	910	540	59%	910	532	58%	910	498	55%	910	490	54%
Turner	Elementary	PK-6	100%	874	599	69%	874	669	77%	874	768	88%	896	871	97%	1,006	988	98%	1,072	1,065	99%
University Park	Elementary	PK-6	100%	811	529	65%	811	548	68%	811	612	75%	811	647	80%	811	649	80%	811	665	82%
Viera Elem	Elementary	K-6	100%	1,030	885	86%	1,030	960	93%	1,030	979	95%	1,030	997	97%	1,030	1,001	97%	1,030	1,002	97%
Westside	Elementary	K-6	100%	941	984	105%	1,051	1,041	99%	1,117	1,112	100%	1,227	1,208	98%	1,337	1,296	97%	1,425	1,411	99%
Williams	Elementary	PK-6	100%	715	436	61%	715	395	55%	715	387	54%	715	371	52%	715	353	49%	715	329	46%
Elementary Totals				42,106	30,023		42,348	30,425		42,546	30,883		42,876	31,251		43,338	31,428		43,690	31,653	

School	Type	Grades	Utilization Factor	School Year 2024-25			School Year 2025-26			School Year 2026-27			School Year 2027-28			School Year 2028-29			School Year 2029-30		
				FISH Capacity	10/14/24 Member-ship	Total Capacity Utilization	Future FISH Capacity	Student Projection	Total Capacity Utilization	Future FISH Capacity	Student Projection	Total Capacity Utilization	Future FISH Capacity	Student Projection	Total Capacity Utilization	Future FISH Capacity	Student Projection	Total Capacity Utilization	Future FISH Capacity	Student Projection	Total Capacity Utilization
Middle School Concurrency Service Areas																					
Central	Middle	7-8	90%	1,514	1,058	70%	1,514	1,063	70%	1,514	1,048	69%	1,514	1,101	73%	1,514	1,161	77%	1,514	1,158	76%
DeLaura	Middle	7-8	90%	960	548	57%	960	440	46%	960	419	44%	960	446	46%	960	430	45%	960	411	43%
Hoover	Middle	7-8	90%	680	473	70%	680	465	68%	680	451	66%	680	480	71%	680	490	72%	680	486	71%
Jackson	Middle	7-8	90%	660	505	77%	660	465	70%	660	454	69%	660	446	68%	660	434	66%	660	411	62%
Jefferson	Middle	7-8	90%	873	479	55%	873	481	55%	873	450	52%	873	437	50%	873	513	59%	873	528	60%
Johnson	Middle	7-8	90%	1,064	577	54%	1,064	602	57%	1,064	633	59%	1,064	682	64%	1,064	718	67%	1,064	696	65%
Kennedy	Middle	7-8	90%	869	449	52%	869	355	41%	869	327	38%	869	362	42%	869	368	42%	869	348	40%
Madison	Middle	7-8	90%	781	446	57%	781	431	55%	781	412	53%	781	463	59%	781	482	62%	781	436	56%
McNair	Middle	7-8	90%	616	262	43%	616	259	42%	616	258	42%	616	282	46%	616	324	53%	616	322	52%
Southwest	Middle	7-8	90%	1,281	1,001	78%	1,281	1,046	82%	1,281	1,073	84%	1,281	1,224	96%	1,439	1,403	97%	1,459	1,448	99%
Stone	Middle	7-8	90%	1,076	556	52%	1,076	523	49%	1,076	584	54%	1,076	612	57%	1,076	651	61%	1,076	786	73%
Viera Middle	Middle	7-8	90%	896	742	83%	955	954	100%	955	943	99%	955	925	97%	955	903	95%	955	898	94%
Middle Totals				11,270	7,096		11,329	7,084		11,329	7,052		11,329	7,460		11,487	7,877		11,507	7,928	
Junior / Senior High School Concurrency Service Areas																					
Cocoa	Jr / Sr High	PK, 7-12	90%	2,085	1,435	69%	2,085	1,371	66%	2,085	1,320	63%	2,085	1,270	61%	2,085	1,306	63%	2,085	1,317	63%
Cocoa Beach	Jr / Sr High	7-12	90%	1,464	1,049	72%	1,464	982	67%	1,464	966	66%	1,464	912	62%	1,464	894	61%	1,464	859	59%
Space Coast	Jr / Sr High	7-12	90%	1,852	1,505	81%	1,852	1,500	81%	1,852	1,482	80%	1,852	1,476	80%	1,852	1,433	77%	1,852	1,382	75%
Jr / Sr High Totals				5,401	3,989		5,401	3,853		5,401	3,768		5,401	3,658		5,401	3,633		5,401	3,558	
Senior High School Concurrency Service Areas																					
Astronaut	High	9-12	95%	1,451	1,054	73%	1,451	1,047	72%	1,451	1,034	71%	1,451	984	68%	1,451	953	66%	1,451	970	67%
Bayside	High	9-12	95%	2,358	2,126	90%	2,358	2,173	92%	2,358	2,304	98%	2,429	2,427	100%	2,572	2,554	99%	2,786	2,784	100%
Eau Gallie	High	PK, 9-12	95%	2,211	1,400	63%	2,211	1,416	64%	2,211	1,429	65%	2,211	1,446	65%	2,211	1,530	69%	2,211	1,588	72%
Heritage	High	9-12	95%	2,314	1,992	86%	2,314	1,969	85%	2,314	1,979	86%	2,314	1,922	83%	2,314	1,923	83%	2,314	1,969	85%
Melbourne	High	9-12	95%	2,370	2,210	93%	2,370	2,202	93%	2,370	2,199	93%	2,370	2,214	93%	2,370	2,218	94%	2,370	2,309	97%
Merritt Island	High	PK, 9-12	95%	1,966	1,445	73%	1,966	1,328	68%	1,966	1,272	65%	1,966	1,231	63%	1,966	1,149	58%	1,966	1,135	58%
Palm Bay	High	PK, 9-12	95%	2,642	1,366	52%	2,642	1,326	50%	2,642	1,307	49%	2,642	1,325	50%	2,642	1,410	53%	2,642	1,435	54%
Rockledge	High	9-12	95%	1,836	1,577	86%	1,836	1,579	86%	1,836	1,592	87%	1,836	1,555	85%	1,836	1,526	83%	1,836	1,560	85%
Satellite	High	PK, 9-12	95%	1,551	1,436	93%	1,551	1,373	89%	1,551	1,317	85%	1,551	1,232	79%	1,551	1,213	78%	1,551	1,178	76%
Titusville	High	9-12	95%	1,801	1,277	71%	1,801	1,260	70%	1,801	1,206	67%	1,801	1,160	64%	1,801	1,141	63%	1,801	1,104	61%
Viera	High	PK, 9-12	95%	2,461	2,333	95%	2,461	2,379	97%	2,461	2,375	97%	2,461	2,422	98%	2,461	2,421	98%	2,461	2,435	99%
High Totals				22,961	18,216		22,961	18,052		22,961	18,014		23,032	17,918		23,175	18,038		23,389	18,467	
Schools of Choice (Not Concurrency Service Areas)																					
Freedom 7	Elementary	K-6	100%	475	408	86%	475	414	87%	475	414	87%	475	414	87%	475	414	87%	475	414	87%
Stevenson	Elementary	K-6	100%	569	481	85%	569	486	85%	569	486	85%	569	486	85%	569	486	85%	569	486	85%
South Lake	Elementary	K-6	100%	639	469	73%	639	496	78%	639	496	78%	639	496	78%	639	496	78%	639	496	78%
West Melbourne	Elementary	K-6	100%	654	605	93%	760	625	82%	760	625	82%	760	625	82%	760	625	82%	760	625	82%
Edgewood	Jr / Sr High	7-12	90%	1,077	940	87%	1,077	945	88%	1,077	945	88%	1,077	945	88%	1,077	945	88%	1,077	945	88%
West Shore	Jr / Sr High	7-12	90%	1,264	947	75%	1,264	945	75%	1,264	945	75%	1,264	945	75%	1,264	945	75%	1,264	945	75%
Schools of Choice				4,678	3,850		4,784	3,911		4,784	3,911		4,784	3,911		4,784	3,911		4,784	3,911	
Brevard Totals				86,416	63,174		86,823	63,325		87,021	63,628		87,422	64,198		88,185	64,887		88,771	65,517	

Notes

- FISH Capacity is the sum of the factored permanent capacity and the factored relocatable capacity. Permanent and relocatable capacities for 2024-25 are reported from the FISH database as of November 13, 2024.
- Student Membership is reported from the Fall Final Membership Count (10/14/2024).
- Davis Demographics SchoolSite Enrollment Forecasting Extension for ArcGIS estimates future student populations by analyzing the following data:
 - Development Projections from Brevard County Local Government Jurisdictions
 - Brevard County School Concurrency Student Generation Multipliers (SGM)
 - Fall Membership student addresses and corresponding concurrency service areas
 - Student Mobility Rates / Cohort Survival Rates
 - Brevard County Birth rates by zip code
- Davis Demographics estimates are then adjusted using the following factors:
 - PK (Pre-Kindergarten) and AH (daycare for students with infants) enrollment number are assumed to be constant
 - Current From/To attendance patterns are assumed to remain constant.
 - Nongecoded student addresses are assumed to continue in their attendance schools.
 - Charter School Growth.
- In order to maintain utilization rates lower than the 100% Level of Service, Permanent Capacity and Relocatable Classrooms are assumed to add future student stations as necessary.
- If student projections are accurate, the school board could add additional classroom capacity, implement attendance boundary changes, or add relocatable classrooms. A south area elementary school is planned for the future growth, but the exact timing hasn't been established.
 - If only relocatable classrooms are used for the next 5 years, the following changes would be needed to accommodate projected growth. These schools are being analyzed for the best options to accommodate additional students.
 - Primary relocatable classrooms (Grades K-3) = 18 student stations, Intermediate (Grades 4-8) relocatable classrooms = 22 student stations, and High School (Grades 9-12) relocatable classrooms = 25 student stations
 - For school year 2025-26, a total of 13 intermediate classrooms are projected for Jupiter (2), Riviera (2), Sunrise (2), and Westside (4) Elementary Schools and Viera Middle School (3).
 - For school year 2026-27, a total of 9 intermediate classrooms are projected for Jupiter (2), Riviera (2), Sunrise (2), and Westside (3) Elementary Schools.
 - For school year 2027-28, a total of 15 intermediate classrooms are projected for Jupiter (2), Riviera (3), Sunrise (4), Turner (1) and Westside (5) Elementary Schools and 3 High School relocatable classrooms are proposed for Bayside High School.
 - For school year 2028-29, a total of 29 intermediate classrooms are projected for Columbia (2), Jupiter (2), Riviera (2), Sunrise (5), Turner (5), and Westside (5) Elementary Schools, Southwest Middle School (8) and 6 High School relocatable classrooms are proposed for Bayside High School.
 - For school year 2029-30, a total of 17 intermediate classrooms are projected for Columbia (2), Jupiter (2), Sunrise (5), Turner (3), and Westside (4) Elementary Schools, Southwest Middle School (1) and 9 High School relocatable classrooms are proposed for Bayside.
- A classroom addition is planned to open at West Melbourne School of Science for 2025-26. The factored capacity is adjusted for the proposed 106 student stations.



BREVARD CHARTER SCHOOLS: FROM ANALYSIS

Fall Final Membership Count - October 14, 2024

				Students' School of Enrollment																	
				Charter Schools																	
Students' School of Residence			BPS K-12 Student Membership	Number of K-12 Public School Students Residing in Boundary	Emma Jewel	Imagine Schools	Odyssey Charter Sch	Odyssey Prep.	Palm Bay Academy	Pineapple Cove	Pineapple Cove at Lockmar	Pineapple Cove at West Melbourne	Pinecrest Academy Space Coast	Riverside Chater	Royal Palm Charter	Sculptor Charter Sch	Viera Charter	W Melbne Ed Horizon Chrt	Total Charter Students FROM District School Boundary	Percentage of Resident Public School Students Attending Charter Schools	
Elementary Schools	Roy Allen	615	806	3	14	2	2			10	10	20	11		3		14	19	108	13.4%	
	Andersen	477	662	1								1	33				142		177	26.7%	
	Apollo	573	702	5									1			65	1		72	10.3%	
	Atlantis	627	653	2												36	6		44	6.7%	
	Audubon	391	520	6	2								1				2		11	2.1%	
	Cambridge	417	453	14	1									2			1	12		30	6.6%
	Cape View	261	303																	-	0.0%
	Carroll	631	663											4			3	2		9	1.4%
	Challenger 7	420	495	5										1			18	9		34	6.9%
	Columbia	529	990		19	147	86	8	41	36	14				47			1	1	400	40.4%
	Coquina	426	568	2							1			4			38	6		51	9.0%
	Creel	496	772		7	2			1	4	3	4	19		1			24	8	73	9.5%
	Croton	434	613		6	1				6	3	2	15					18	5	56	9.1%
	Discovery	631	940		40	53	29	15	20	20	47	3			8			4	2	241	25.6%
	Endeavour	667	988	151										3				12		166	16.8%
	Enterprise	558	479	5													25	3	1	34	7.1%
	Fairglen	429	692	2							2			7			22	51		84	12.1%
	Gemini	409	385								1	2				2			1	6	1.6%
	Golfview	409	610	16										17				79		112	18.4%
	Harbor City	364	421		8	2			2		3	4	4					6	8	37	8.8%
	Holland	443	305			1	1											2		4	1.3%
	Imperial Estates	584	781	2										2			121	4		129	16.5%
	Indialantic	659	687		1								4	1				1		7	1.0%
	Jupiter	768	1,367		41	158	54	11	61	66	43	8			26			7	1	476	34.8%
	Lockmar	541	735		24	30	16	5	36	85	27	2			11				9	245	33.3%
	Longleaf	547	453							1			1	23				28	4	57	12.6%
	Manatee	909	975	2										44			1	140		187	19.2%
	McAuliffe	645	859		22	39	20	11	50	48	29	5			9			1	3	237	27.6%
	Meadowlane Primary	564	709		27	4	1	4	13	28	66	4			1			2	11	161	22.7%
	Meadowlane Intermediate	778	1,059		27	17	2	6	24	28	110	1			2			6	21	244	23.0%
	Mila	349	485	11		1								4				8		24	4.9%
	Mims	347	501	2													23			25	5.0%
	Oak Park	438	690	1										3			52	1		57	8.3%
	Ocean Breeze	493	521			1												1		2	0.4%
	Palm Bay Elem	500	727		29	23	15	55	10	14	10		6			15		1	4	182	25.0%
	Pinewood	462	478													1	20			21	4.4%
	Port Malabar	590	758		24	46	35	14	28	28	22					31		2		230	30.3%
	Quest	665	1,061	1	1				1			1	97			1		205		307	28.9%
	Riviera	643	1,056		112	36	16	41	29	31	26	3				9		3	7	313	29.6%
	Roosevelt	273	311										1					6		7	2.3%
Sabal	463	684		13	1				8	1	18	6			2		32	11	92	13.5%	
Saturn	535	820	57					1					16			3	53		130	15.9%	
Sea Park	289	293											4				5		9	3.1%	
Sherwood	415	449		4					2	2	3	19					35	1	66	14.7%	
Sunrise	882	1,102		10	75	40	11	43	26	14	1				19		1	1	241	21.9%	
Suntree	580	646		3									26				41		70	10.8%	
Surfside	402	385											3		1				4	1.0%	
Tropical	559	657	4	1									2				20		27	4.1%	
Turner	540	1,017		22	159	52	17	52	52	22	7				24		2	1	410	40.3%	
University Park	436	913	2	140	7	5	48	12	15	32	3				9		5	16	294	32.2%	
Viera Elem	884	946								1	2	86					119	2	210	22.2%	
Westside	940	1,524		15	184	87	9	94	86	36	3				33		1		548	36.0%	
Williams	407	429							1				21				68		90	21.0%	
Non Geo-Located			30		2	5	1	1	1	3	3				1	3			20		
Total Number of K-6 Elementary Students Attending School			28,294	37,128	294	615	994	462	260	547	593	563	526	-	257	431	1,192	137	6,871	18.5%	
Middle Schools	Central	1,058	1,527		14	92			9	62	50	102	7	22	13		7		378	24.8%	
	DeLaura	548	505							2		1	2				2		7	1.4%	
	Hoover	473	538		2	2				1	1	1	1	3	3				14	2.6%	
	Jackson	505	612	1												65	2		68	11.1%	
	Jefferson	479	658	3	1								1			2	2		9	1.4%	
	Johnson	577	789		1	3			1	4	1	10	20	3			38		81	10.3%	
	Kennedy	449	420	2								1	18				1	42	64	15.2%	
	Madison	446	513													27	2		29	5.7%	
	McNair	262	301	15									6				1	23	45	15.0%	
	Southwest	1,001	1,580		5	284			45	84	53	26	2	3	42			2	546	34.6%	
	Stone	556	914	1	26	85			53	22	26	29		16	24			3	285	31.2%	
	Viera Middle	742	1,228						1				64	1			189		255	20.8%	
Jr/Sr High	Cocoa	1,422	1,972	18									2	1			6	20	47	2.4%	
	Cocoa Beach	1,049	766															3	3	0.4%	
	Space Coast	1,505	1,422	5		1								1			23	2	32	2.3%	
High Schools	Astronaut	1,054	1,080																-	0.0%	
	Bayside	2,126	2,674			229				141		21		34					425	15.9%	
	Eau Gallie	1,400	1,585			5				7		4		20					36	2.3%	
	Heritage	1,992	2,046			89				88		17		34					228	11.1%	
	Melbourne	2,210	2,468			11				41		24		39					115	4.7%	
	Merritt Island	1,429	1,620																-	0.0%	
	Palm Bay	1,337	1,926			116				62		31		40					249	12.9%	
	Rockledge	1,577	1,442																-	0.0%	
	Satellite	1,419	1,304			1						1		3					5	0.4%	
	Titusville	1,277	1,299											1							