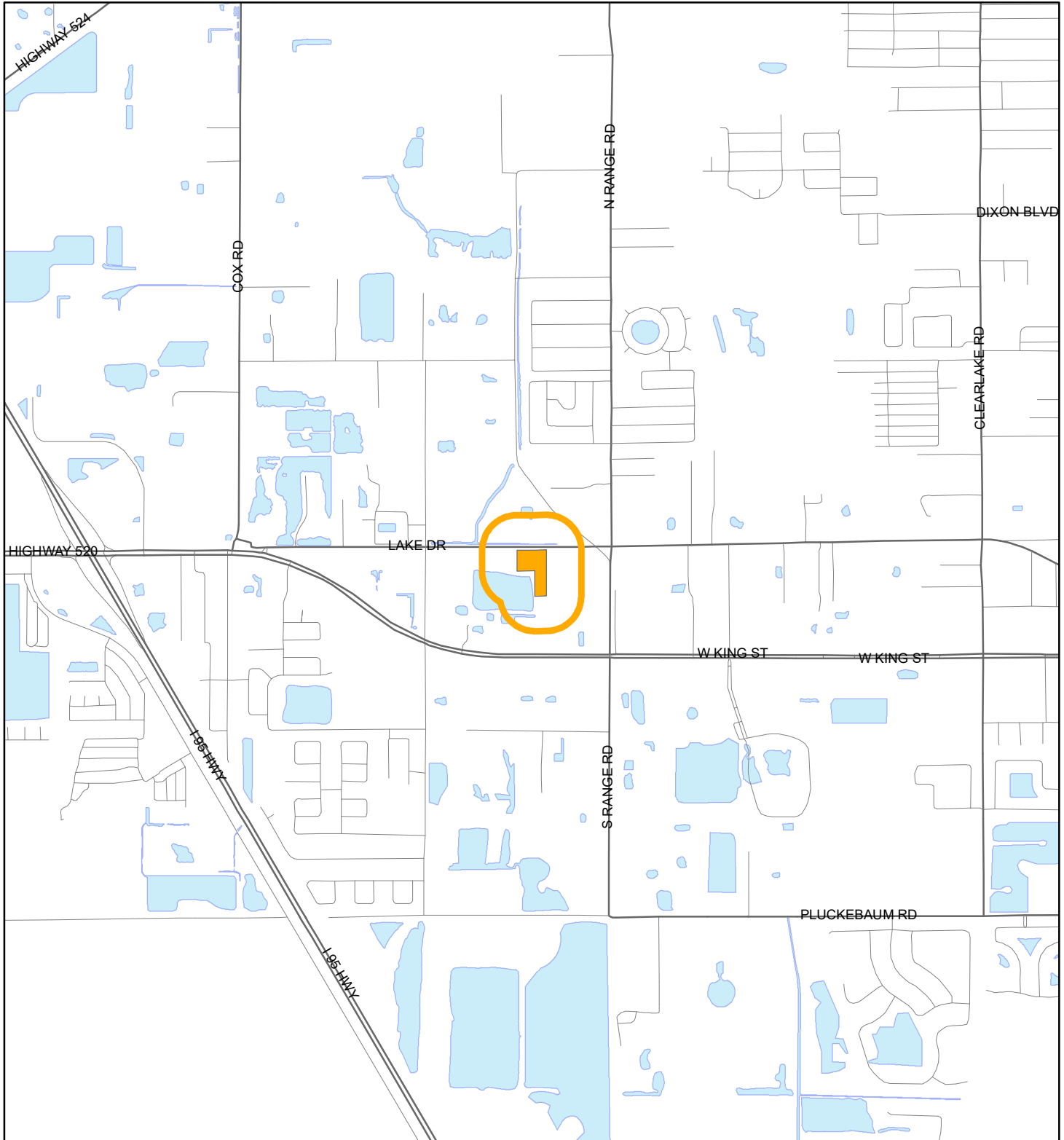


LOCATION MAP

CTX Equities, Inc
25SS00003





1:24,000 or 1 inch = 2,000 feet

Buffer Distance: 500 feet

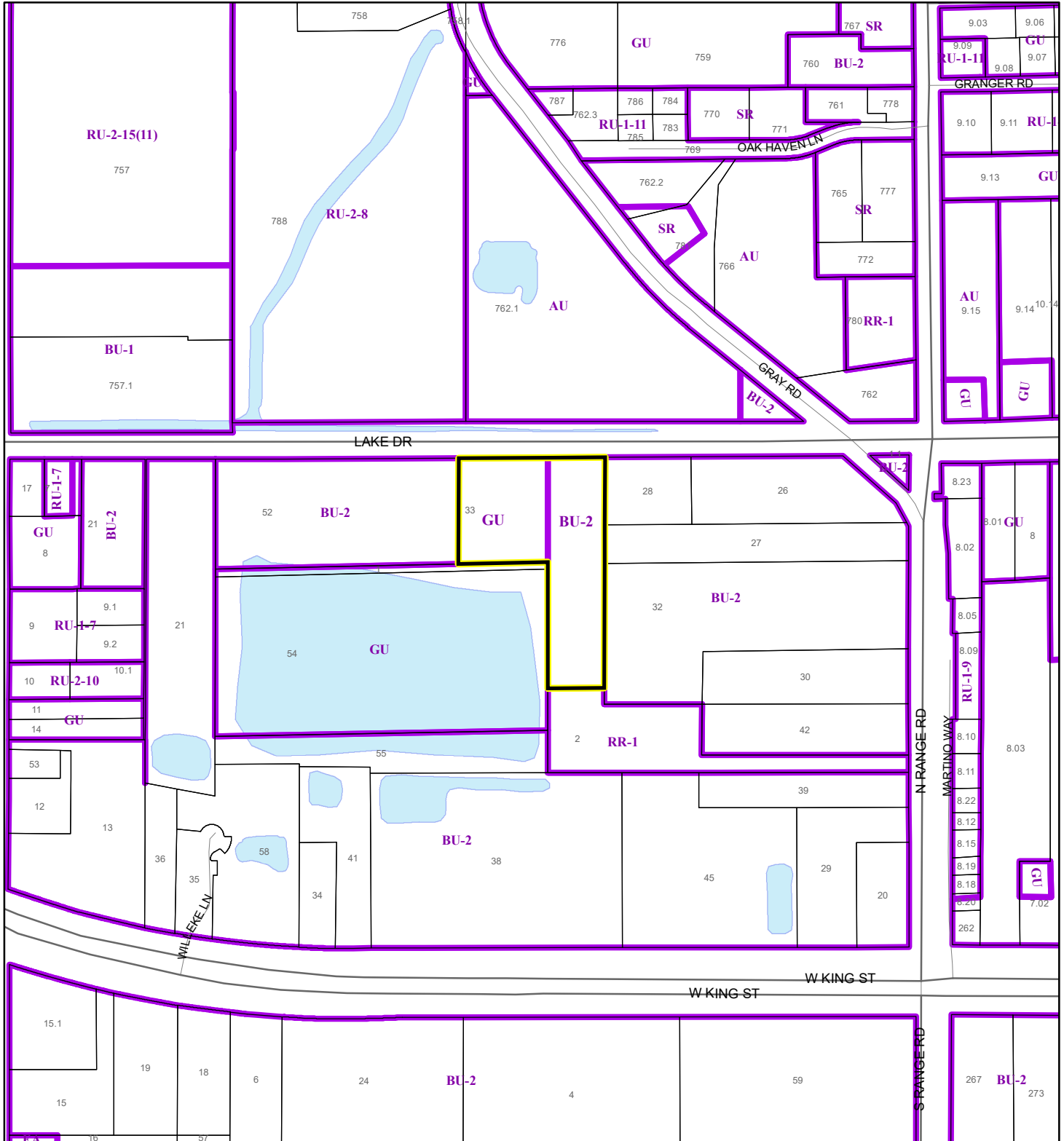
This map was compiled from recorded documents and does not reflect an actual survey. The Brevard County Board of County Commissioners does not assume responsibility for errors or omissions hereon.

Produced by BoCC - GIS Date: 4/8/2025

 Buffer
 Subject Property

ZONING MAP


CTX Equities, Inc
25SS00003



1:4,800 or 1 inch = 400 feet

This map was compiled from recorded documents and does not reflect an actual survey. The Brevard County Board of County Commissioners does not assume responsibility for errors or omissions hereon.

Produced by BoCC - GIS Date: 4/8/2025

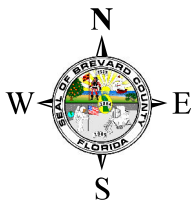
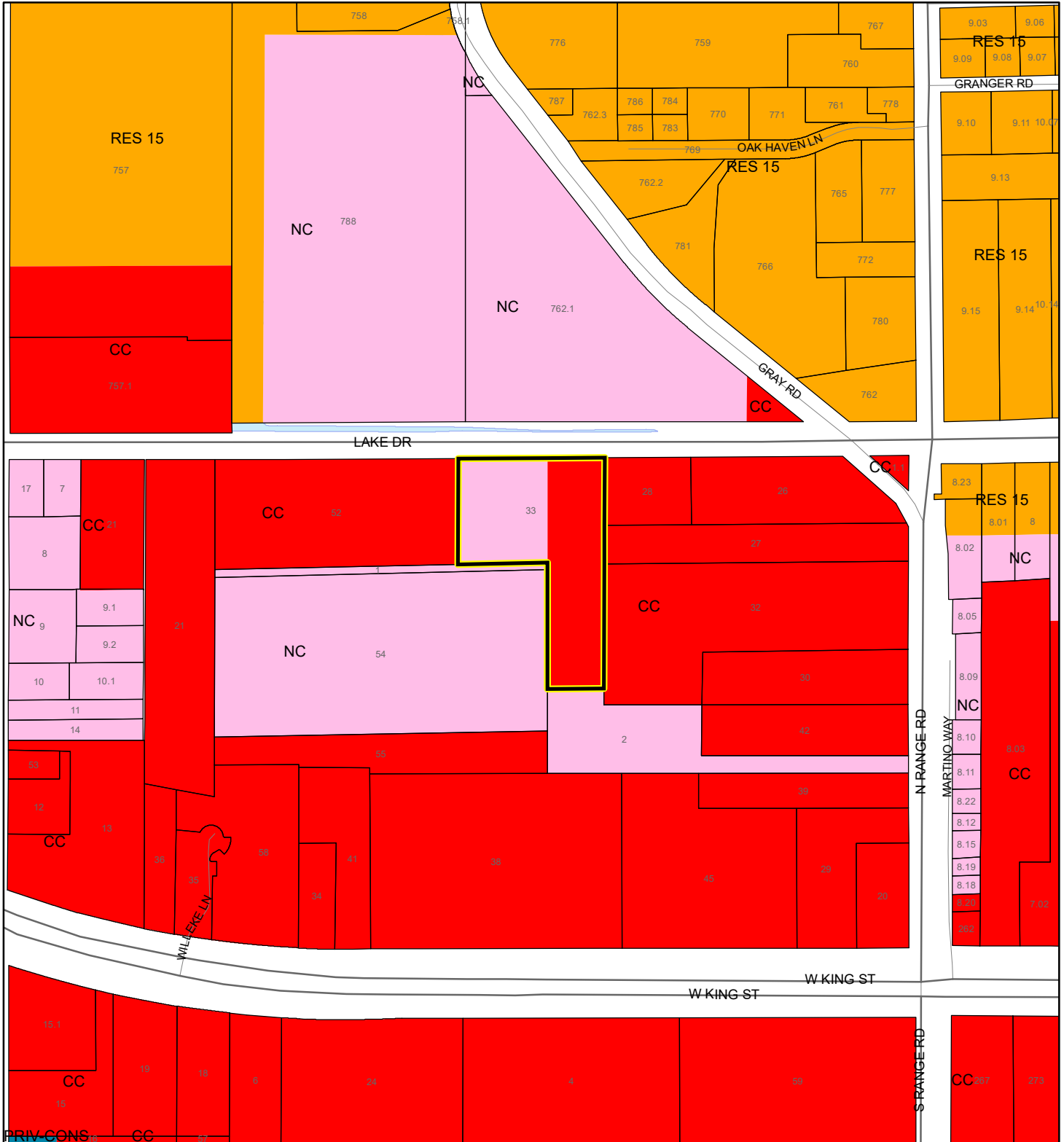
 Subject Property

 Parcels

 Zoning

FUTURE LAND USE MAP

CTX Equities, Inc
25SS00003



1:4,800 or 1 inch = 400 feet

Subject Property

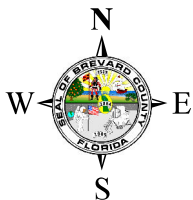
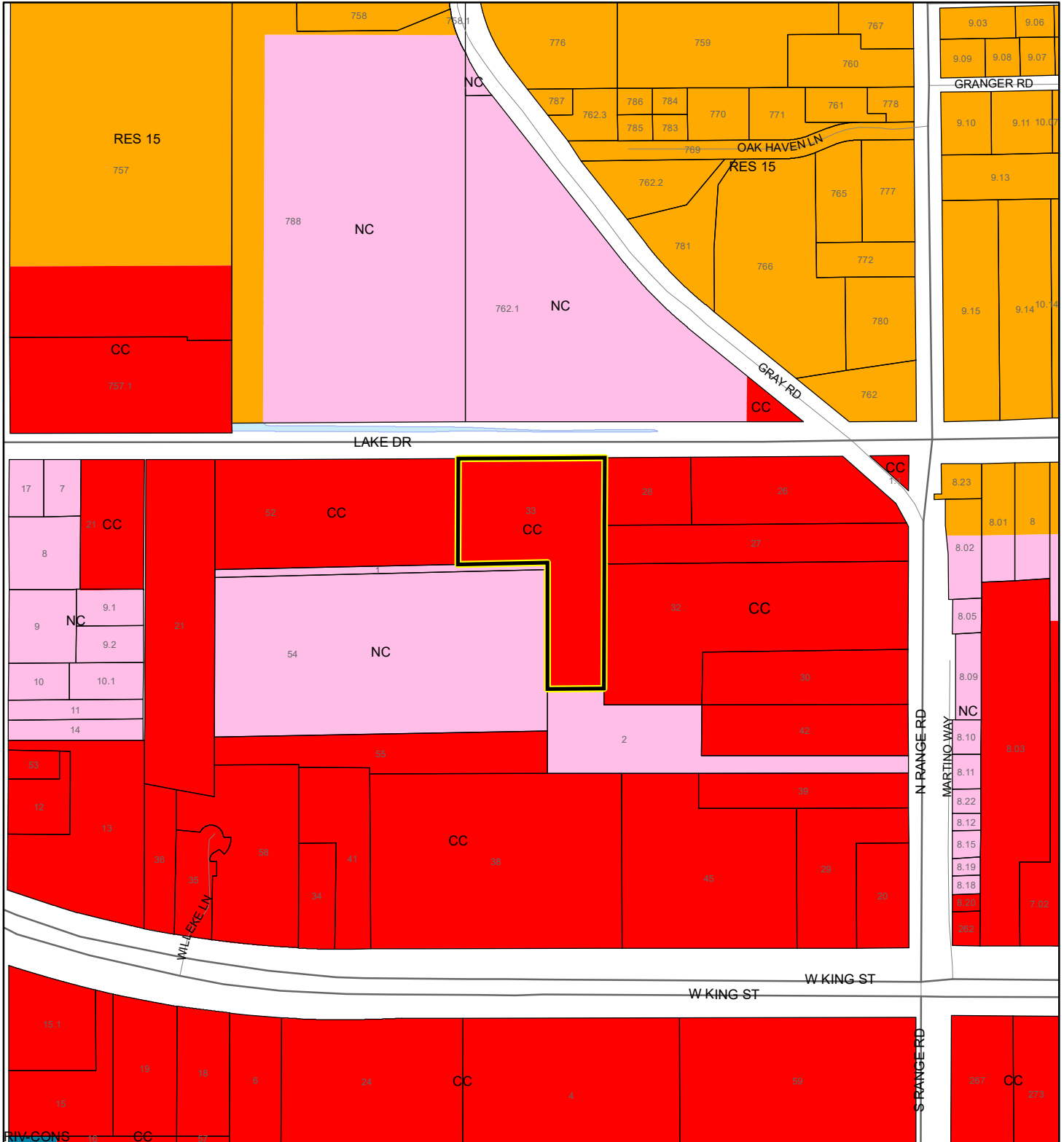
Parcels

This map was compiled from recorded documents and does not reflect an actual survey. The Brevard County Board of County Commissioners does not assume responsibility for errors or omissions hereon.

Produced by BoCC - GIS Date: 4/8/2025

PROPOSED FUTURE LAND USE MAP

CTX Equities, Inc
25SS00003



1:4,800 or 1 inch = 400 feet

Subject Property

Parcels

This map was compiled from recorded documents and does not reflect an actual survey. The Brevard County Board of County Commissioners does not assume responsibility for errors or omissions hereon.

Produced by BoCC - GIS Date: 4/8/2025

AERIAL MAP

CTX Equities, Inc
25SS00003




1:2,400 or 1 inch = 200 feet

PHOTO YEAR: 2024

This map was compiled from recorded documents and does not reflect an actual survey. The Brevard County Board of County Commissioners does not assume responsibility for errors or omissions hereon.

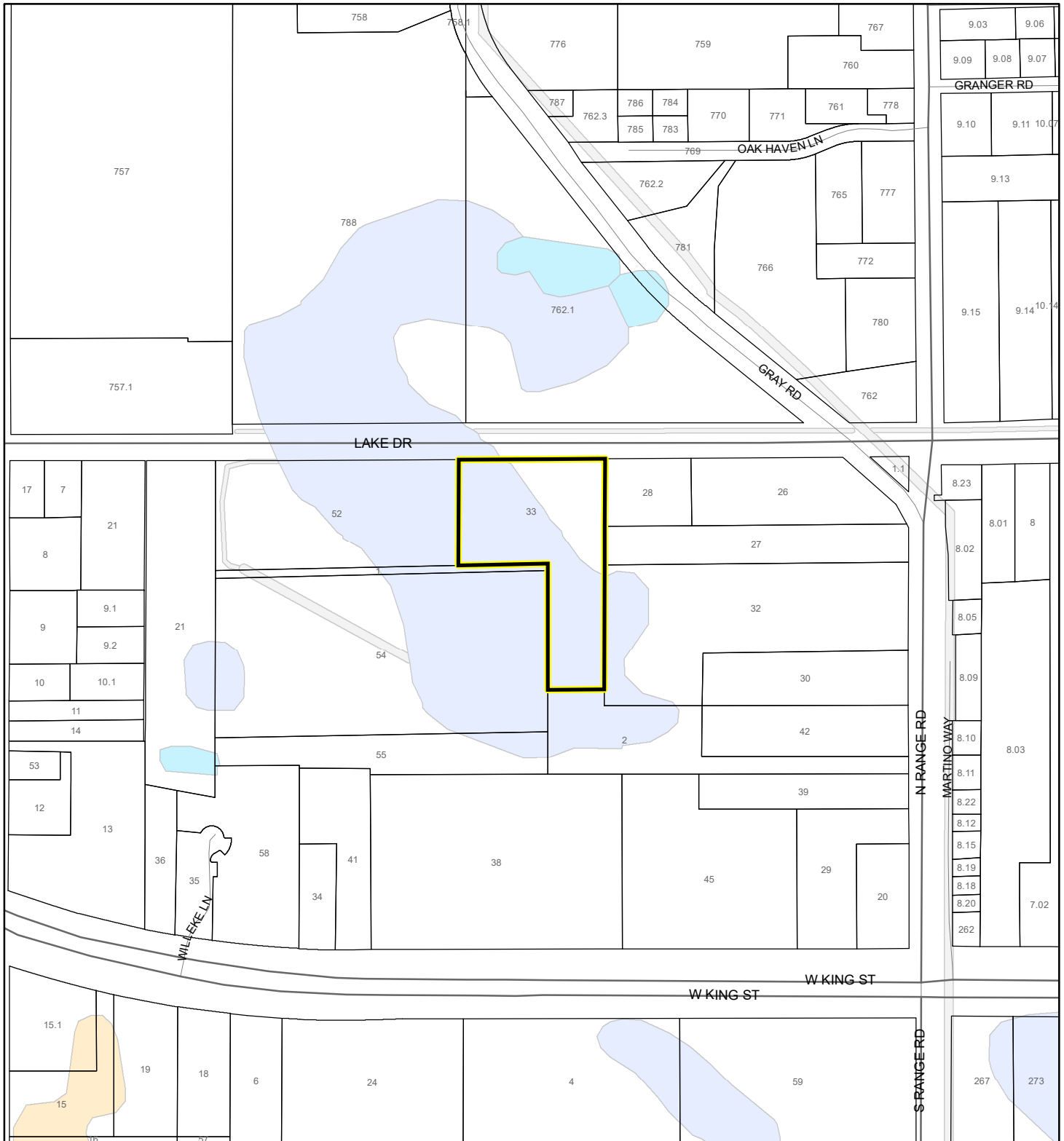
Produced by BoCC - GIS Date: 4/8/2025

 Subject Property

 Parcels

NWI WETLANDS MAP

CTX Equities, Inc
25SS00003






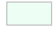

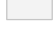

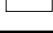


1:4,800 or 1 inch = 400 feet

This map was compiled from recorded documents and does not reflect an actual survey. The Brevard County Board of County Commissioners does not assume responsibility for errors or omissions hereon.

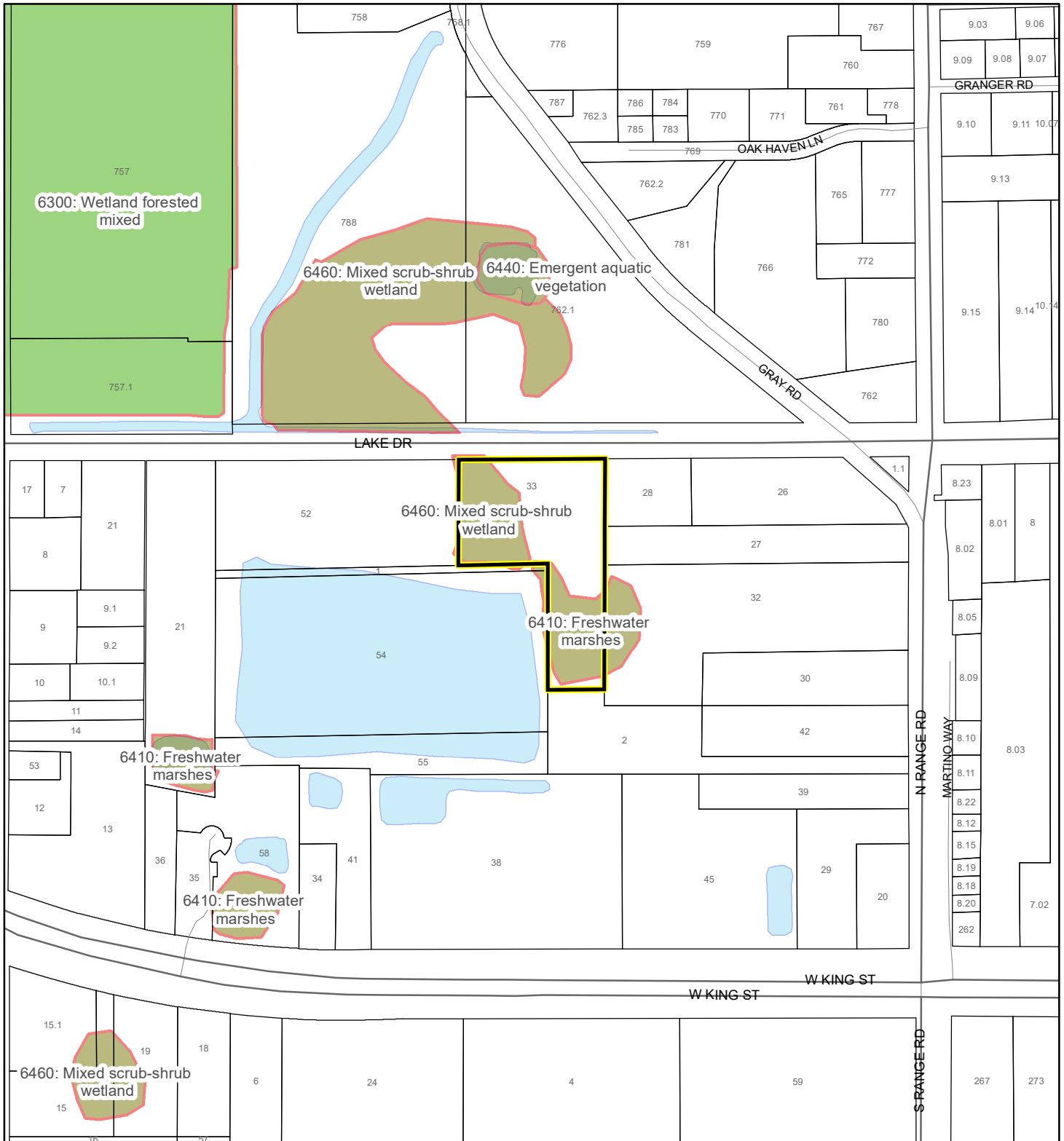
Produced by BoCC - GIS Date: 4/8/2025

National Wetlands Inventory (NWI)

 Estuarine and Marine Deepwater	 Freshwater Pond
 Estuarine and Marine Wetland	 Lake
 Freshwater Emergent Wetland	 Other
 Freshwater Forested/Shrub Wetland	 Riverine
	 Subject Property
	 Parcels

SJRWMD FLUCCS WETLANDS - 6000 Series MAP

CTX Equities, Inc
25SS00003



1:4,800 or 1 inch = 400 feet

This map was compiled from recorded documents and does not reflect an actual survey. The Brevard County Board of County Commissioners does not assume responsibility for errors or omissions hereon.

Produced by BoCC - GIS Date: 4/8/2025

SJRWMD FLUCCS WETLANDS

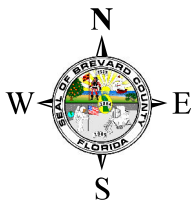
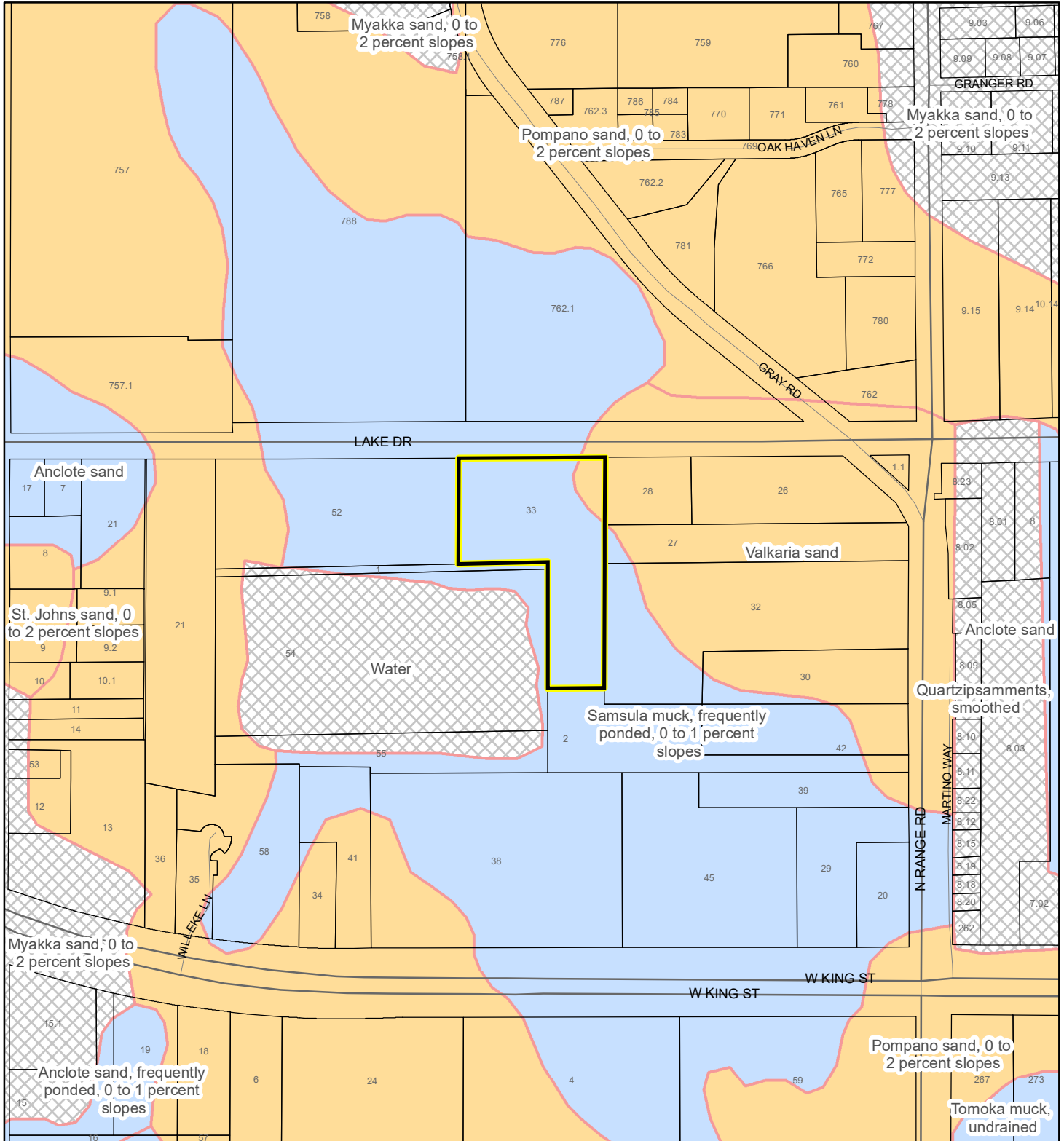
- Wetland Hardwood Forests - Series 6100
- Wetland Coniferous Forest - Series 6200
- Wetland Forested Mixed - Series 6300
- Vegetated Non-Forested Wetlands - Series 6400
- Non-Vegetated Wetland - Series 6500

Subject Property

Parcels

USDA SCSSS SOILS MAP

CTX Equities, Inc
25SS00003



1:4,800 or 1 inch = 400 feet

This map was compiled from recorded documents and does not reflect an actual survey. The Brevard County Board of County Commissioners does not assume responsibility for errors or omissions hereon.

Produced by BoCC - GIS Date: 4/8/2025

USDA SCSSS Soils

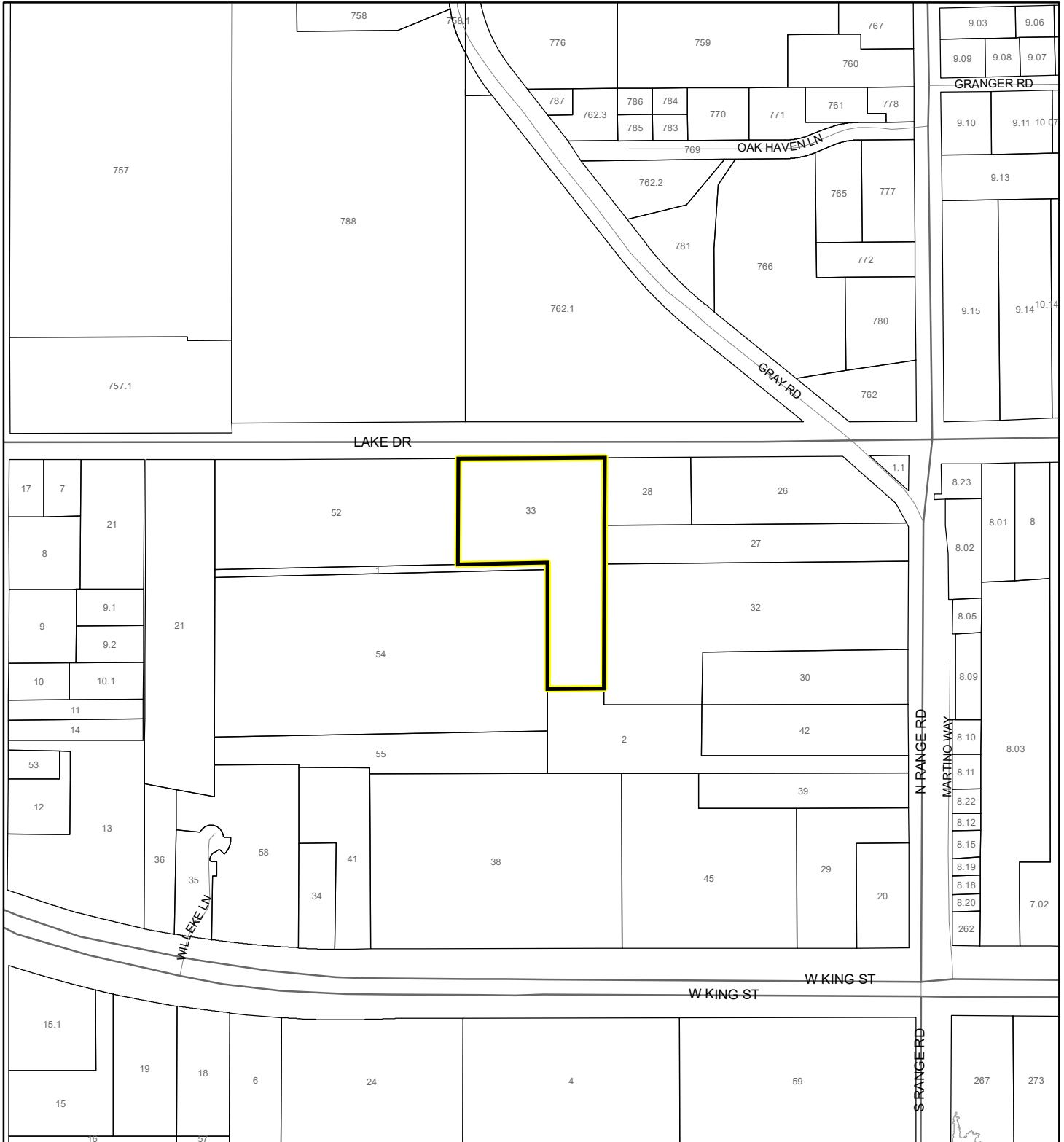
- Aquifer and Hydric
- Aquifer
- Hydric
- None

Subject Property

Parcels

FEMA FLOOD ZONES MAP

CTX Equities, Inc
25SS00003



1:4,800 or 1 inch = 400 feet

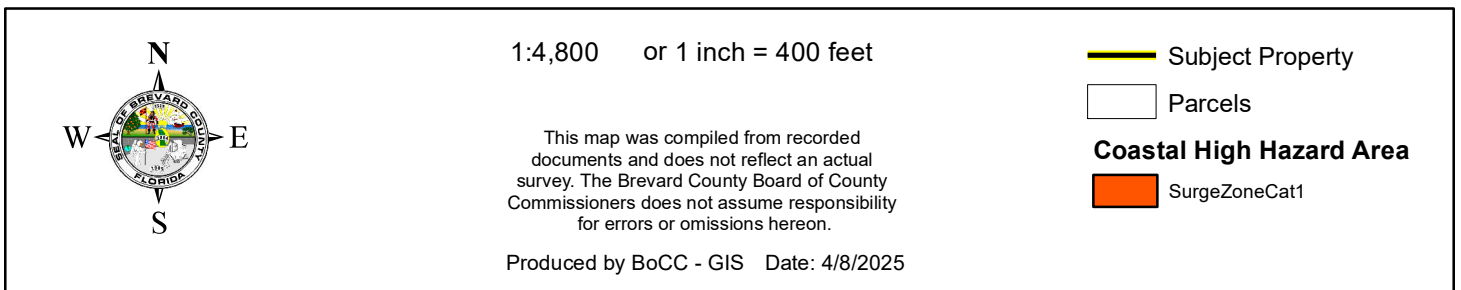
This map was compiled from recorded documents and does not reflect an actual survey. The Brevard County Board of County Commissioners does not assume responsibility for errors or omissions hereon.

Produced by BoCC - GIS Date: 4/8/2025

FEMA Flood Zones

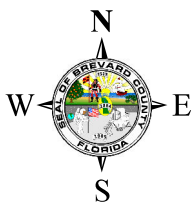
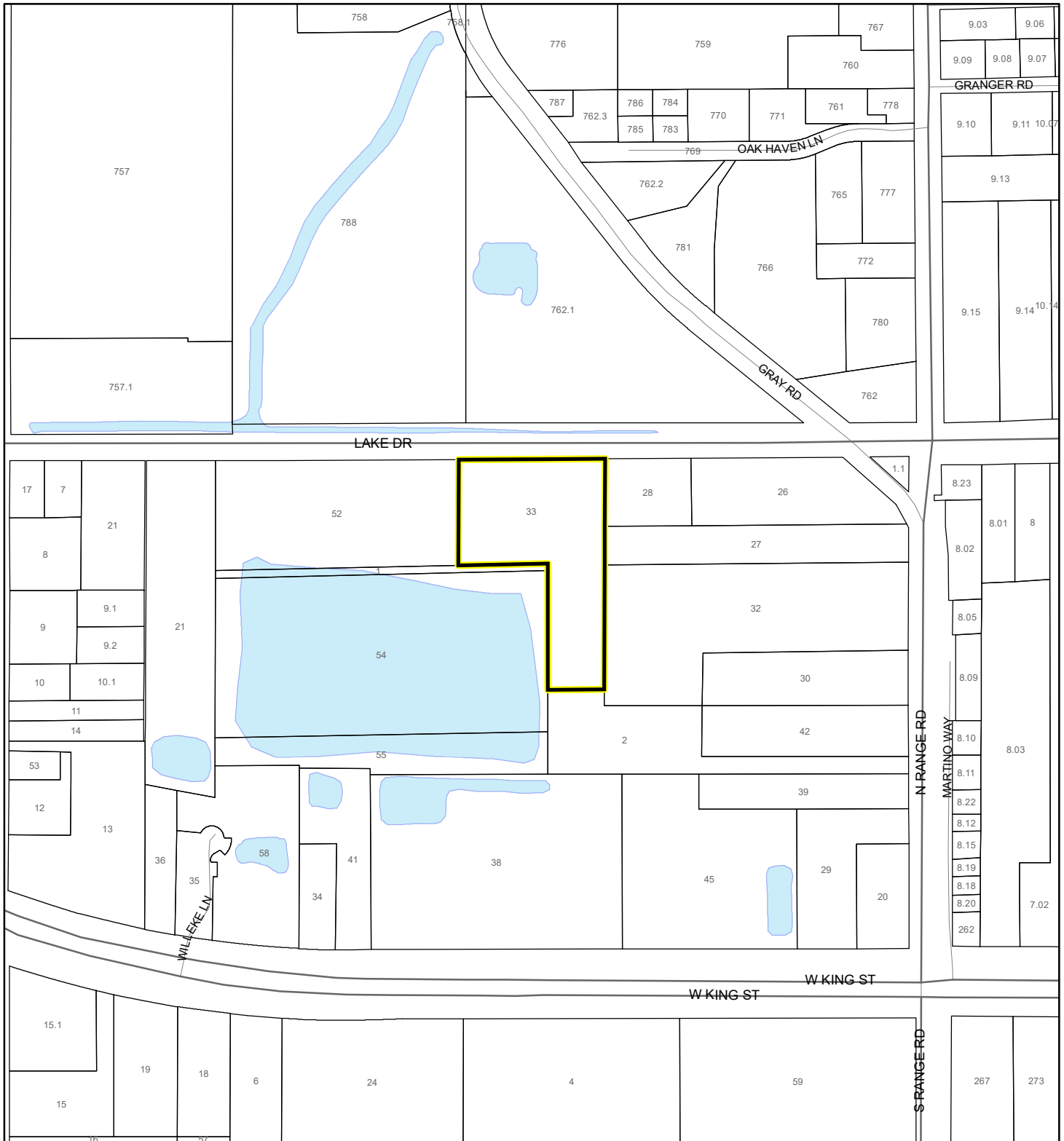
 A	 AO	 X
 AE	 Open Water	
 AH	 VE	
 Subject Property		 Parcels

CTX Equities, Inc
25SS00003



INDIAN RIVER LAGOON SEPTIC OVERLAY MAP

CTX Equities, Inc
25SS00003



1:4,800 or 1 inch = 400 feet

This map was compiled from recorded documents and does not reflect an actual survey. The Brevard County Board of County Commissioners does not assume responsibility for errors or omissions hereon.

Produced by BoCC - GIS Date: 4/8/2025

 Subject Property

 Parcels

Septic Overlay

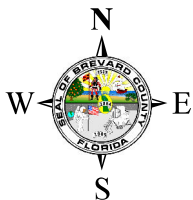
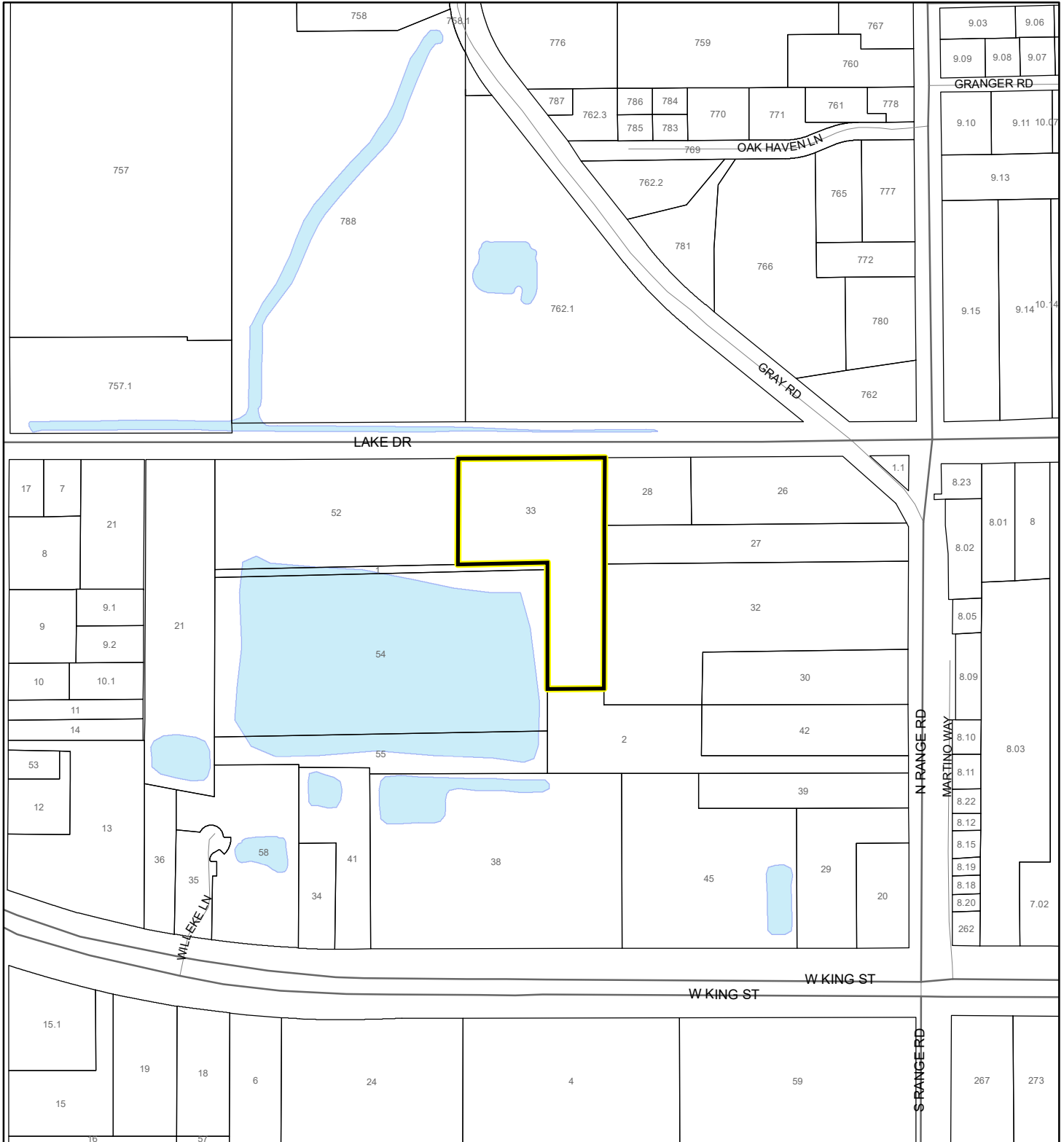
 40 Meters

 60 Meters

 All Distances

EAGLE NESTS MAP

CTX Equities, Inc
25SS00003



1:4,800 or 1 inch = 400 feet

This map was compiled from recorded documents and does not reflect an actual survey. The Brevard County Board of County Commissioners does not assume responsibility for errors or omissions hereon.

Produced by BoCC - GIS Date: 4/8/2025

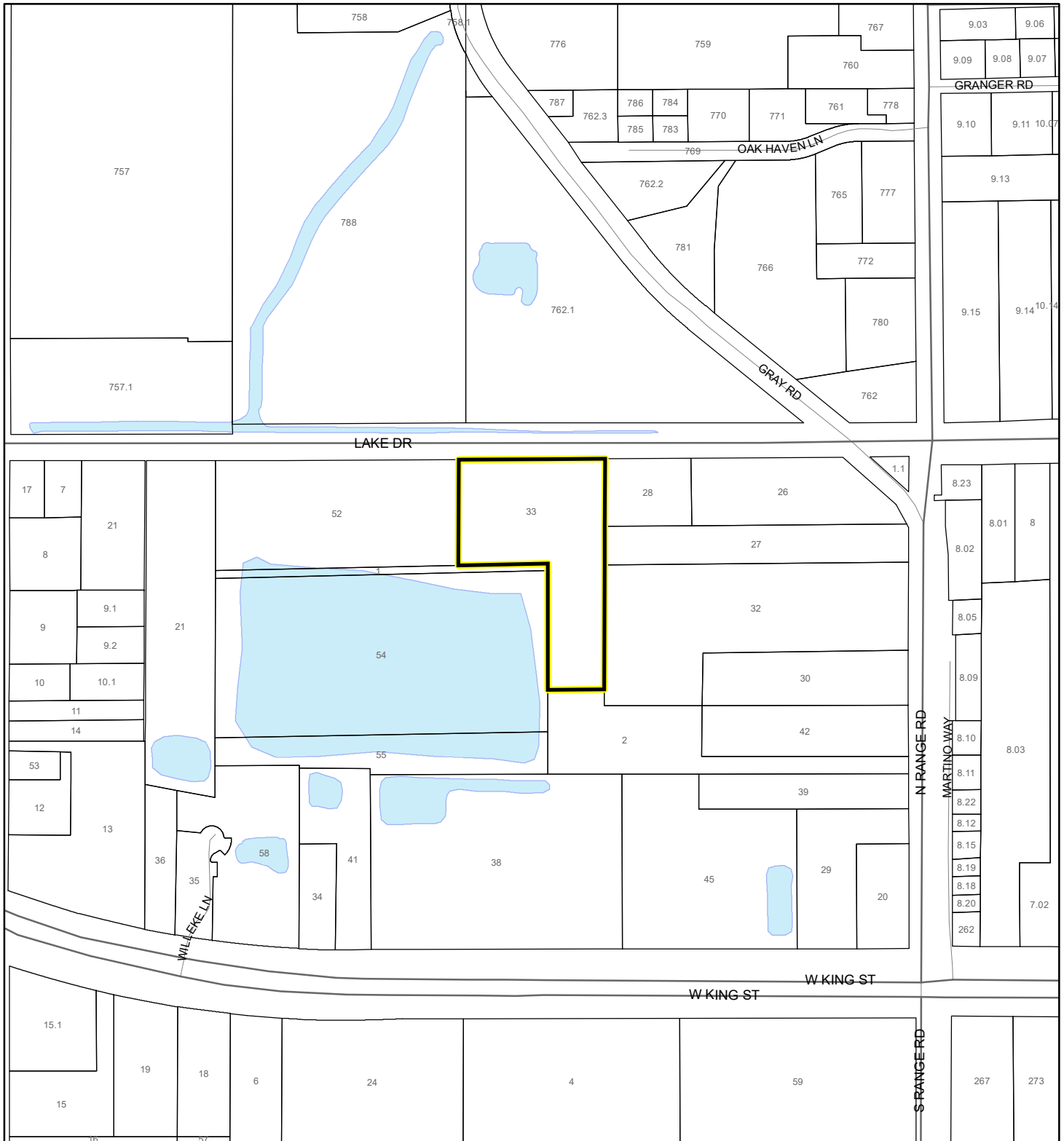
 Subject Property

 Parcels

 Eagle Nests
FWS

SCRUB JAY OCCUPANCY MAP

CTX Equities, Inc
25SS00003



1:4,800 or 1 inch = 400 feet

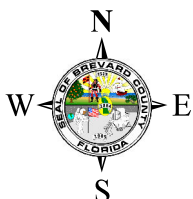
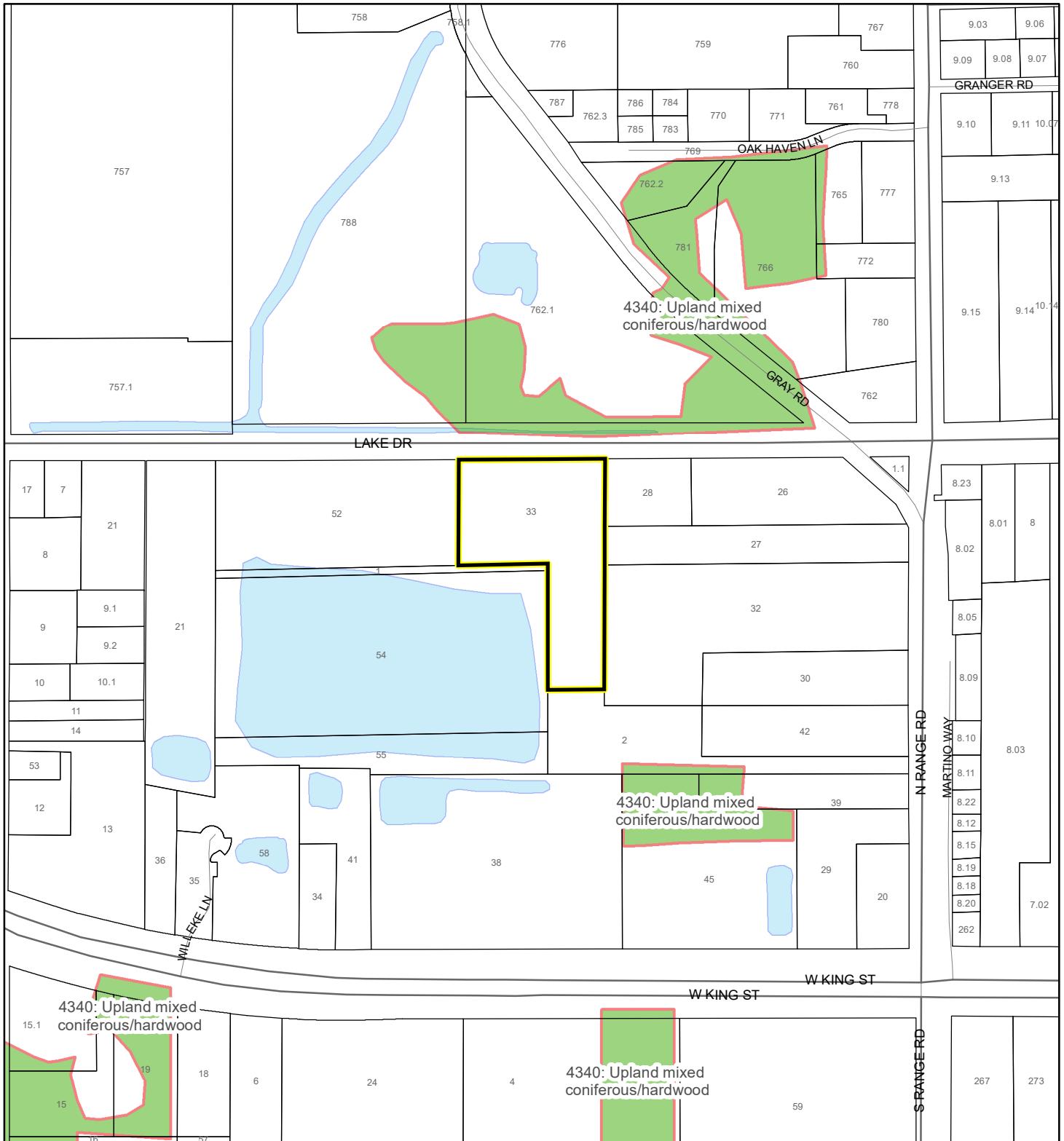
This map was compiled from recorded documents and does not reflect an actual survey. The Brevard County Board of County Commissioners does not assume responsibility for errors or omissions hereon.

Produced by BoCC - GIS Date: 4/8/2025

- Subject Property
- Parcels
- Scrub Jay Occupancy

SJRWMD FLUCCS UPLAND FORESTS - 4000 Series MAP

CTX Equities, Inc
25SS00003



1:4,800 or 1 inch = 400 feet

This map was compiled from recorded documents and does not reflect an actual survey. The Brevard County Board of County Commissioners does not assume responsibility for errors or omissions hereon.

Produced by BoCC - GIS Date: 4/8/2025

SJRWMD FLUCCS Upland Forests

- Upland Coniferous Forest - 4100 Series
- Upland Hardwood Forest - 4200 Series
- Upland Mixed Forest - 4300 Series
- Tree Plantations - 4400 Series

Subject Property

Parcels