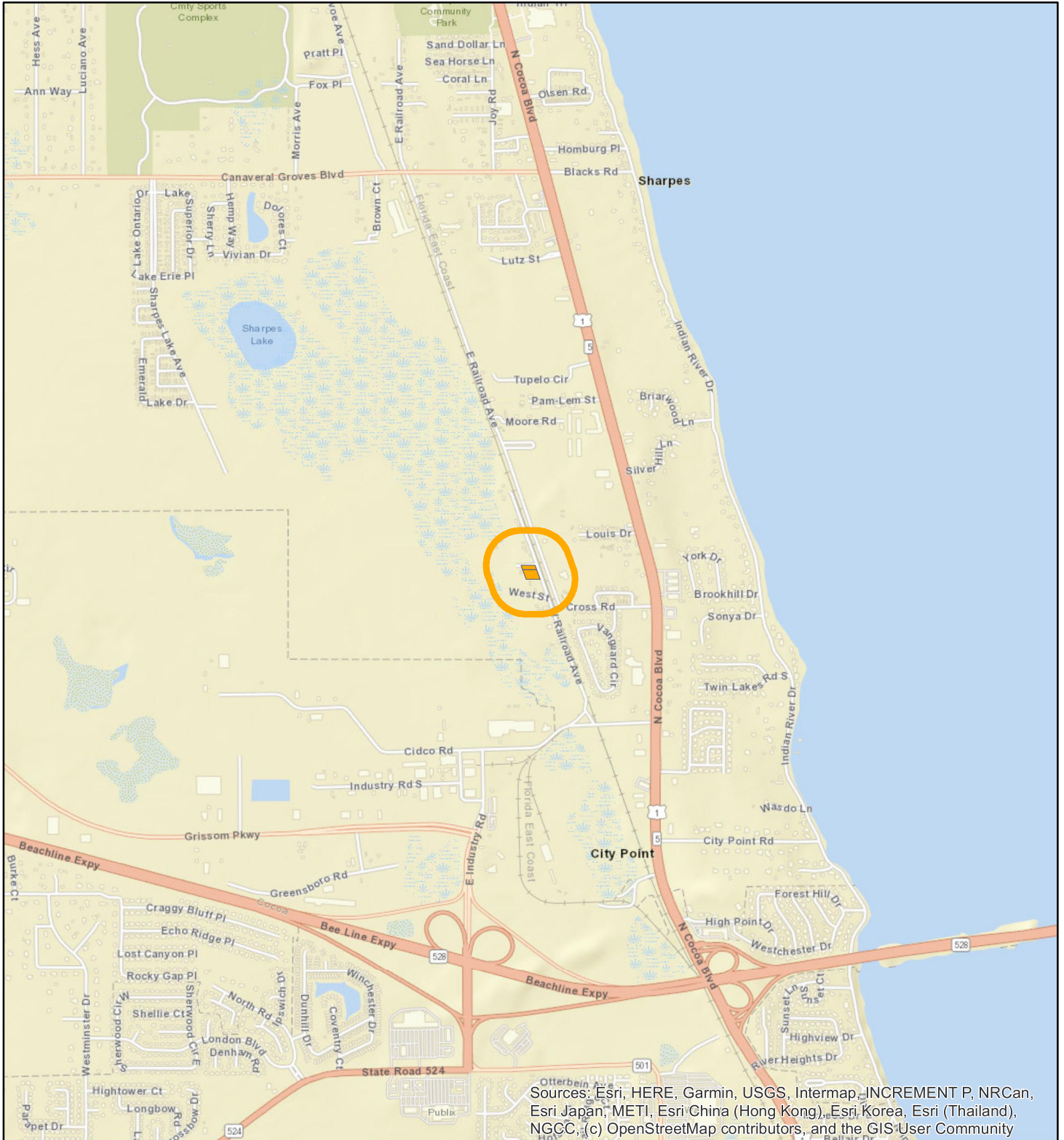


# LOCATION MAP

AMBEWITH LLC

25Z00063



Sources: Esri, HERE, Garmin, USGS, Intermap, INCREMENT P, NRCan, Esri Japan, METI, Esri China (Hong Kong), Esri Korea, Esri (Thailand), NGCC, (c) OpenStreetMap contributors, and the GIS User Community





1:24,000 or 1 inch = 2,000 feet

Buffer Distance: 500 feet

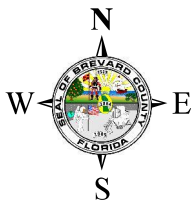
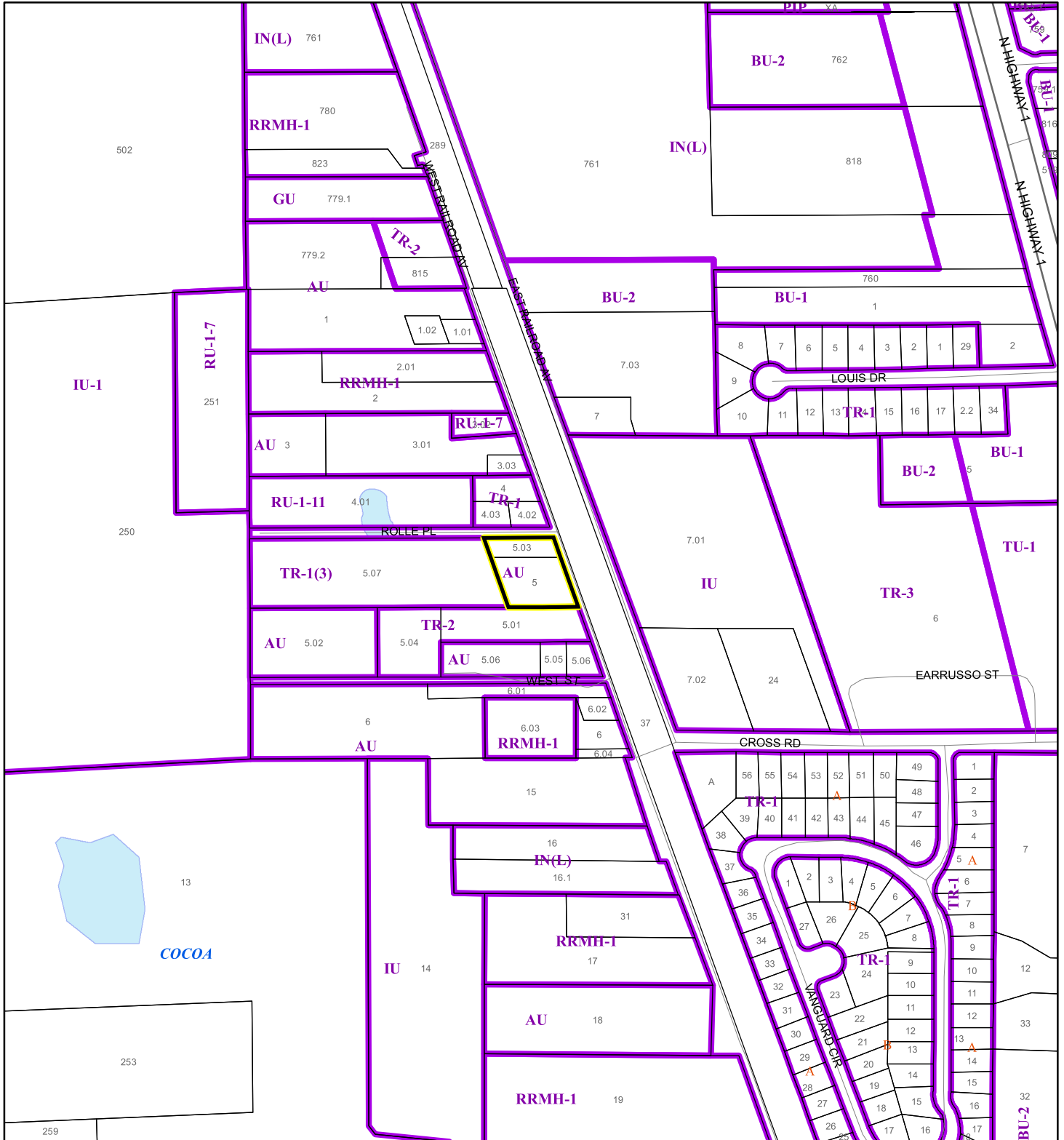
This map was compiled from recorded documents and does not reflect an actual survey. The Brevard County Board of County Commissioners does not assume responsibility for errors or omissions hereon.

Produced by BoCC - GIS Date: 12/31/2025

-  Buffer
-  Subject Property

# ZONING MAP

AMBEWITH LLC  
25Z00063



1:4,800 or 1 inch = 400 feet

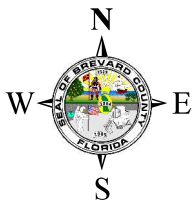
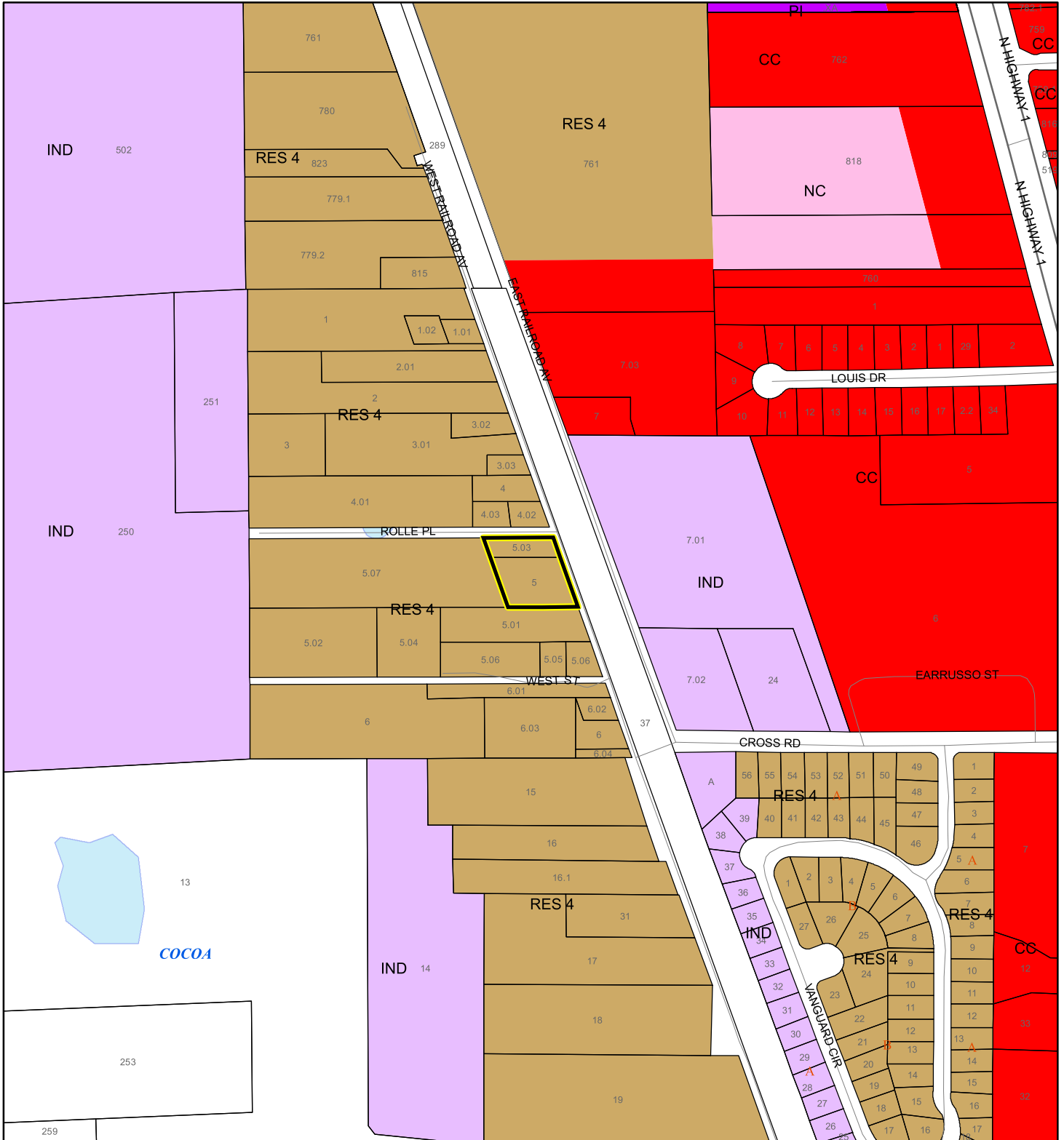
This map was compiled from recorded documents and does not reflect an actual survey. The Brevard County Board of County Commissioners does not assume responsibility for errors or omissions hereon.

Produced by BoCC - GIS Date: 12/31/2025



- Subject Property
- Parcels
- Zoning

# FUTURE LAND USE MAP

AMBEWITH LLC  
25Z00063



1:4,800 or 1 inch = 400 feet

 Subject Property  
 Parcels

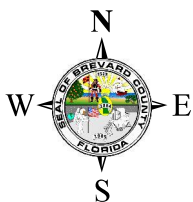
This map was compiled from recorded documents and does not reflect an actual survey. The Brevard County Board of County Commissioners does not assume responsibility for errors or omissions hereon.

Produced by BoCC - GIS Date: 12/31/2025

# AERIAL MAP

AMBEWITH LLC

25Z00063




1:2,400 or 1 inch = 200 feet

PHOTO YEAR: 2025

This map was compiled from recorded documents and does not reflect an actual survey. The Brevard County Board of County Commissioners does not assume responsibility for errors or omissions hereon.

Produced by BoCC - GIS Date: 12/31/2025

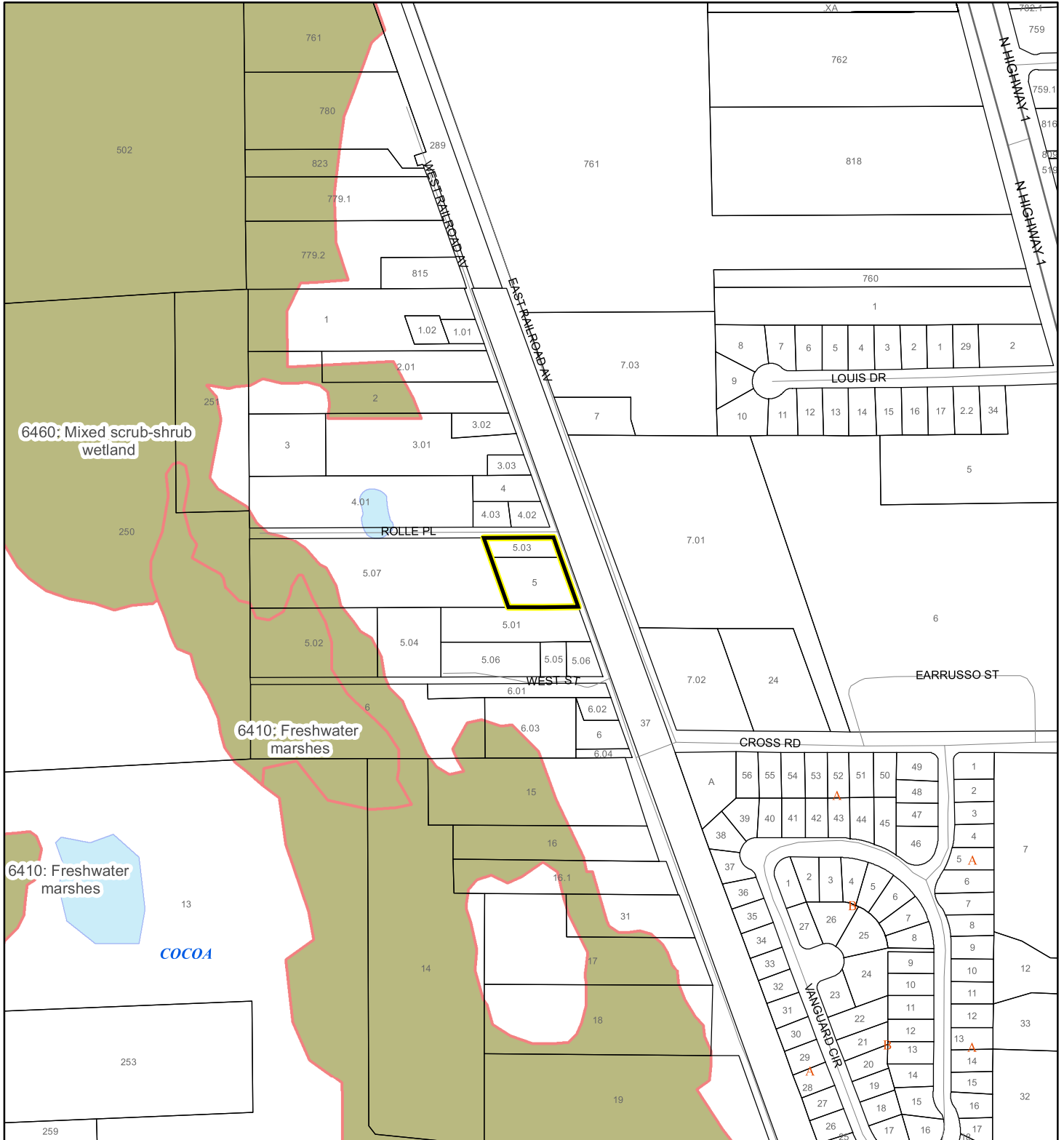
 Subject Property

 Parcels



# SJRWMD FLUCCS WETLANDS - 6000 Series MAP

AMBEWITH LLC  
25Z00063

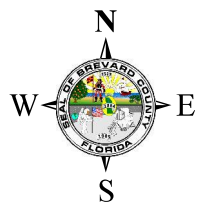


6460: Mixed scrub-shrub wetland

6410: Freshwater marshes

6410: Freshwater marshes

COCOA



1:4,800 or 1 inch = 400 feet

This map was compiled from recorded documents and does not reflect an actual survey. The Brevard County Board of County Commissioners does not assume responsibility for errors or omissions hereon.

Produced by BoCC - GIS Date: 12/31/2025

## SJRWMD FLUCCS WETLANDS

- Wetland Hardwood Forests - Series 6100
- Wetland Coniferous Forest - Series 6200
- Wetland Forested Mixed - Series 6300
- Vegetated Non-Forested Wetlands - Series 6400
- Non-Vegetated Wetland - Series 6500

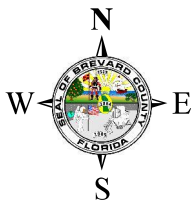
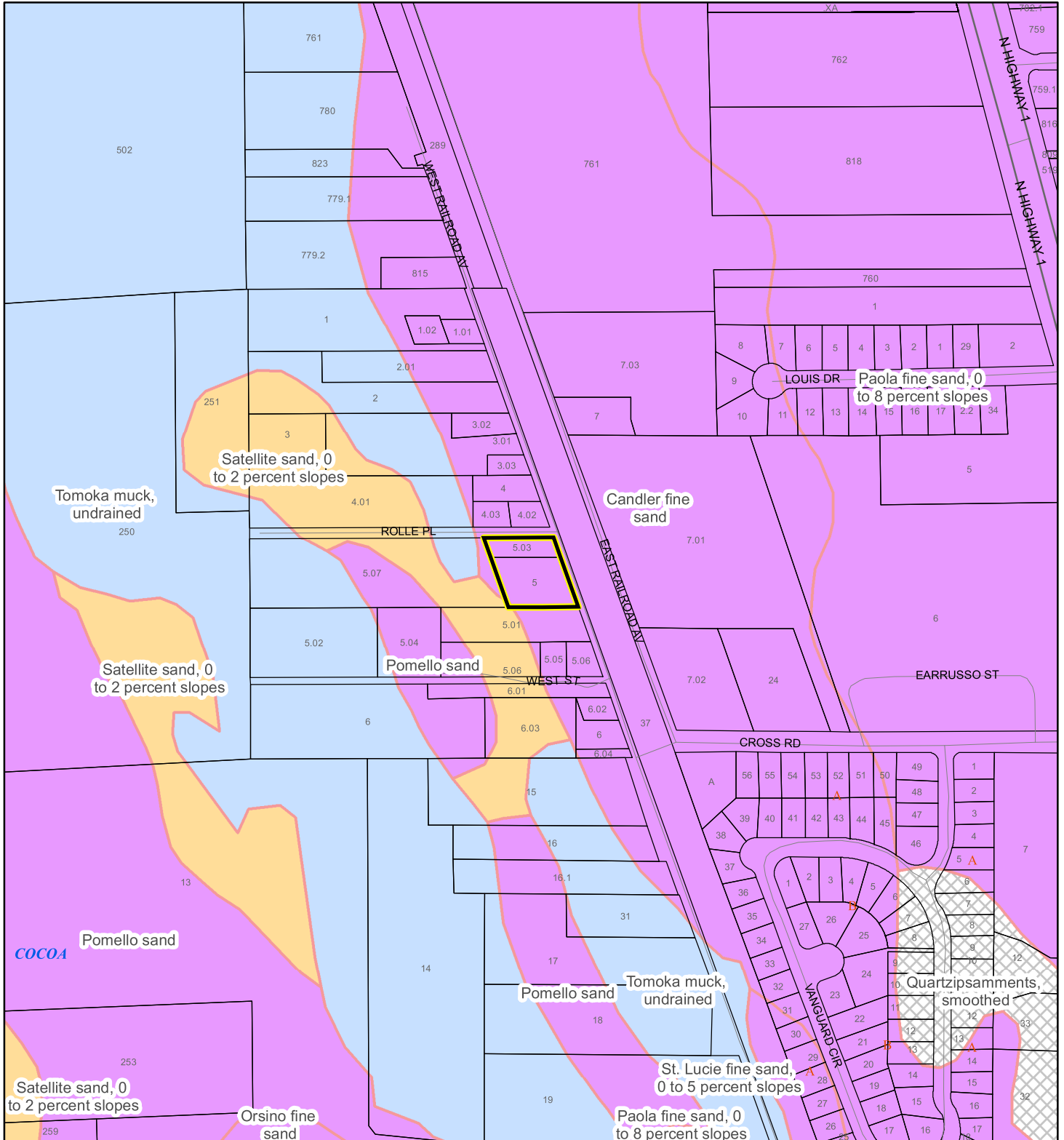
Subject Property

Parcels

# USDA SCSSS SOILS MAP

AMBEWITH LLC

25Z00063



1:4,800 or 1 inch = 400 feet

This map was compiled from recorded documents and does not reflect an actual survey. The Brevard County Board of County Commissioners does not assume responsibility for errors or omissions hereon.

Produced by BoCC - GIS Date: 12/31/2025

## USDA SCSSS Soils

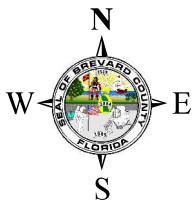
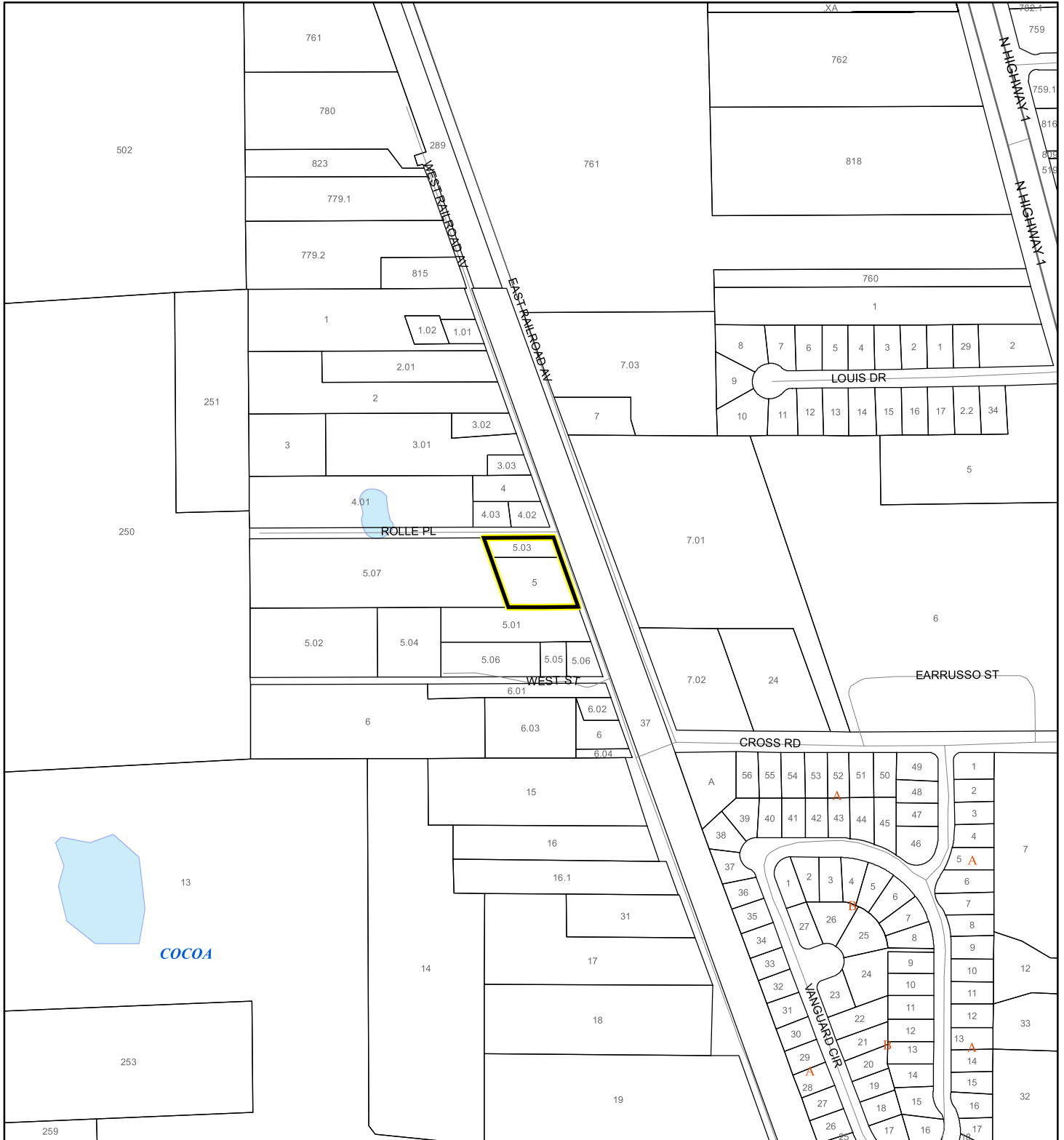
- Aquifer and Hydric
- Aquifer
- Hydric
- None
- Subject Property
- Parcels



# COASTAL HIGH HAZARD AREA MAP

AMBEWITH LLC

25Z00063



1:4,800 or 1 inch = 400 feet


This map was compiled from recorded documents and does not reflect an actual survey. The Brevard County Board of County Commissioners does not assume responsibility for errors or omissions hereon.

Produced by BoCC - GIS Date: 12/31/2025

 Subject Property

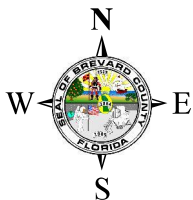
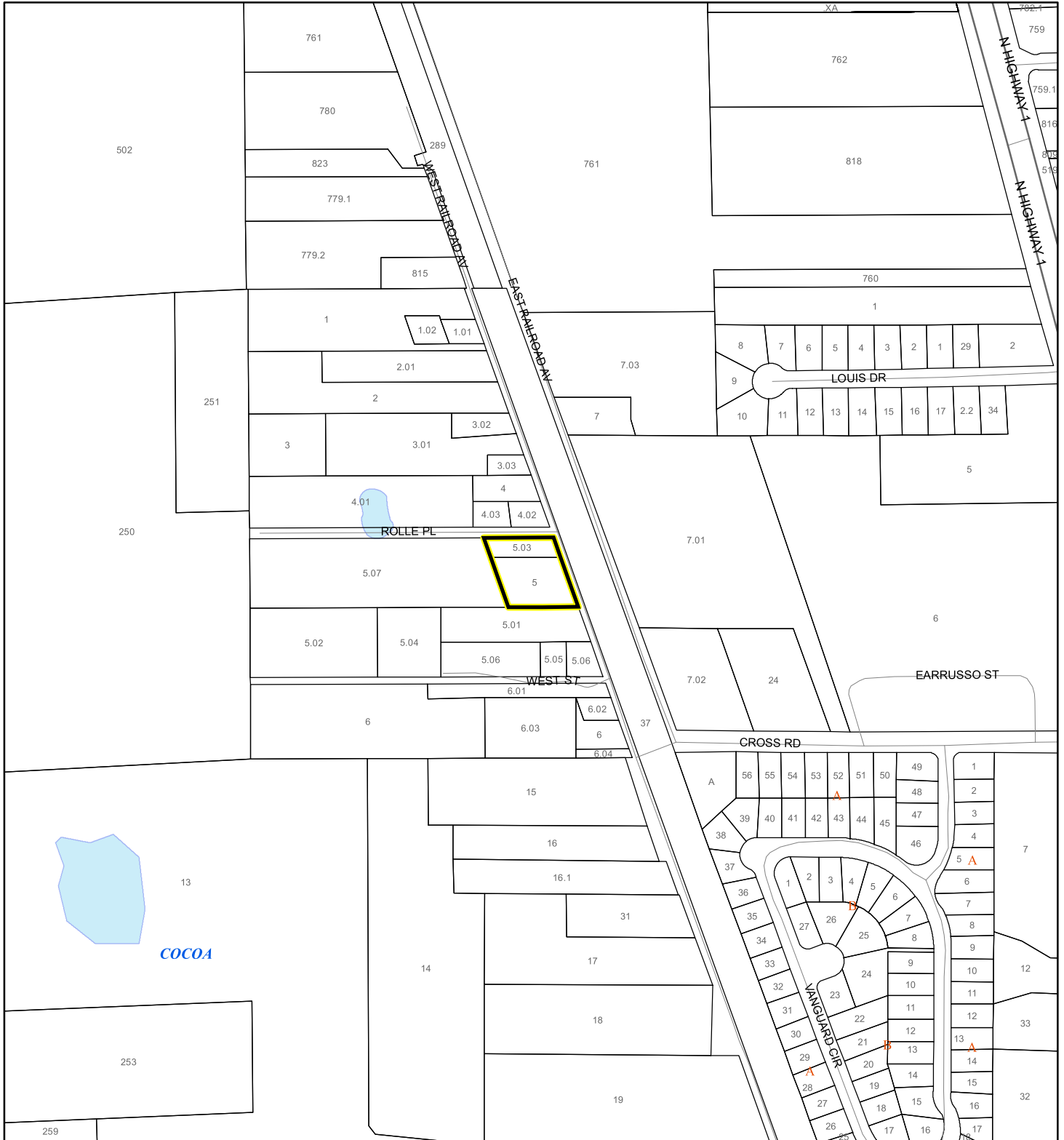
 Parcels

**Coastal High Hazard Area**

 SurgeZoneCat1

# INDIAN RIVER LAGOON SEPTIC OVERLAY MAP

AMBEWITH LLC  
25Z00063



1:4,800 or 1 inch = 400 feet

This map was compiled from recorded documents and does not reflect an actual survey. The Brevard County Board of County Commissioners does not assume responsibility for errors or omissions hereon.

Produced by BoCC - GIS Date: 12/31/2025

 Subject Property

 Parcels

**Septic Overlay**

 40 Meters

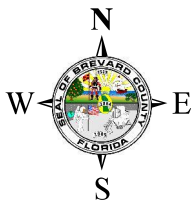
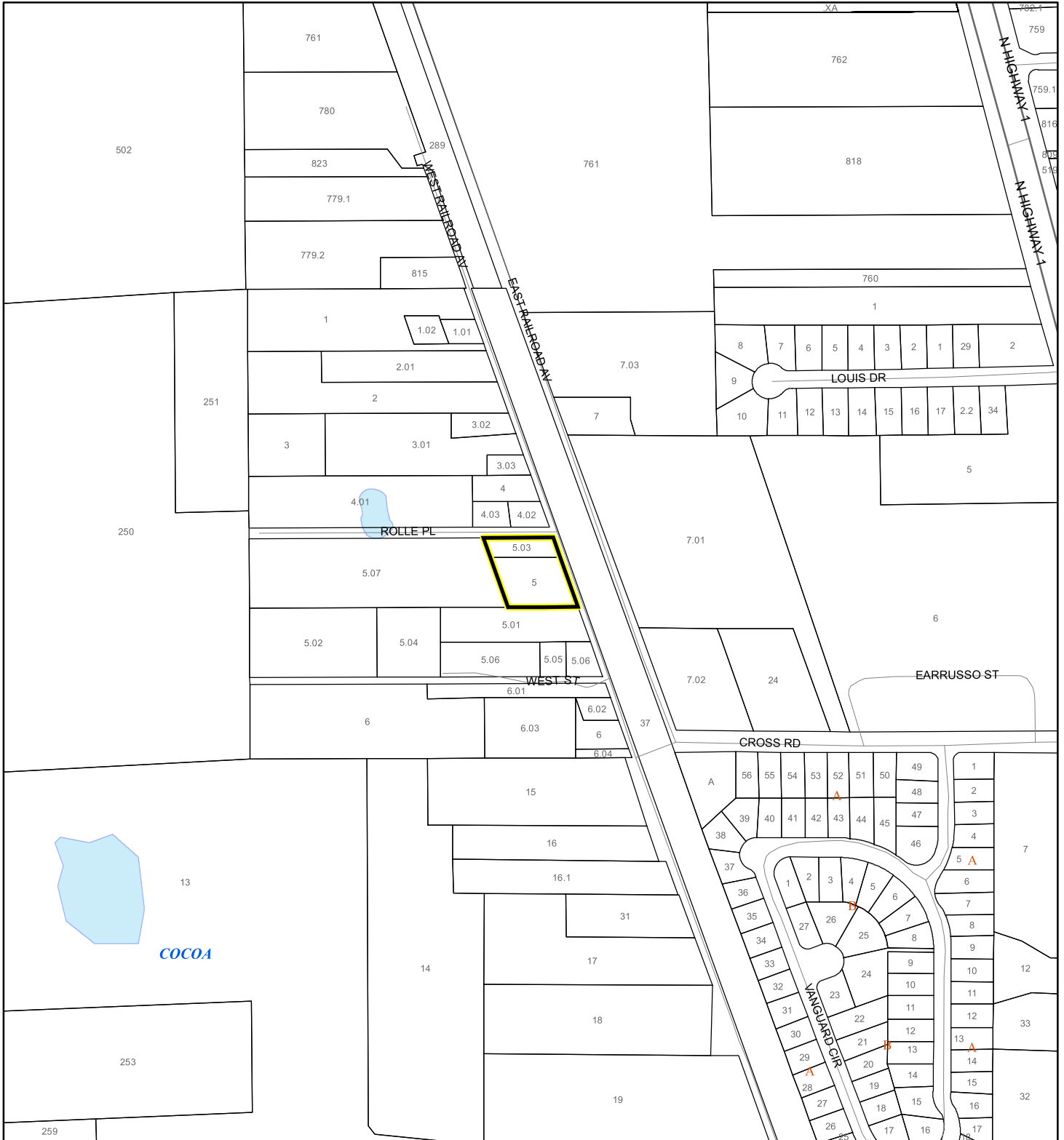
 60 Meters

 All Distances

# EAGLE NESTS MAP

AMBEWITH LLC

25Z00063



1:4,800 or 1 inch = 400 feet

This map was compiled from recorded documents and does not reflect an actual survey. The Brevard County Board of County Commissioners does not assume responsibility for errors or omissions hereon.

Produced by BoCC - GIS Date: 12/31/2025

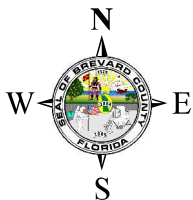
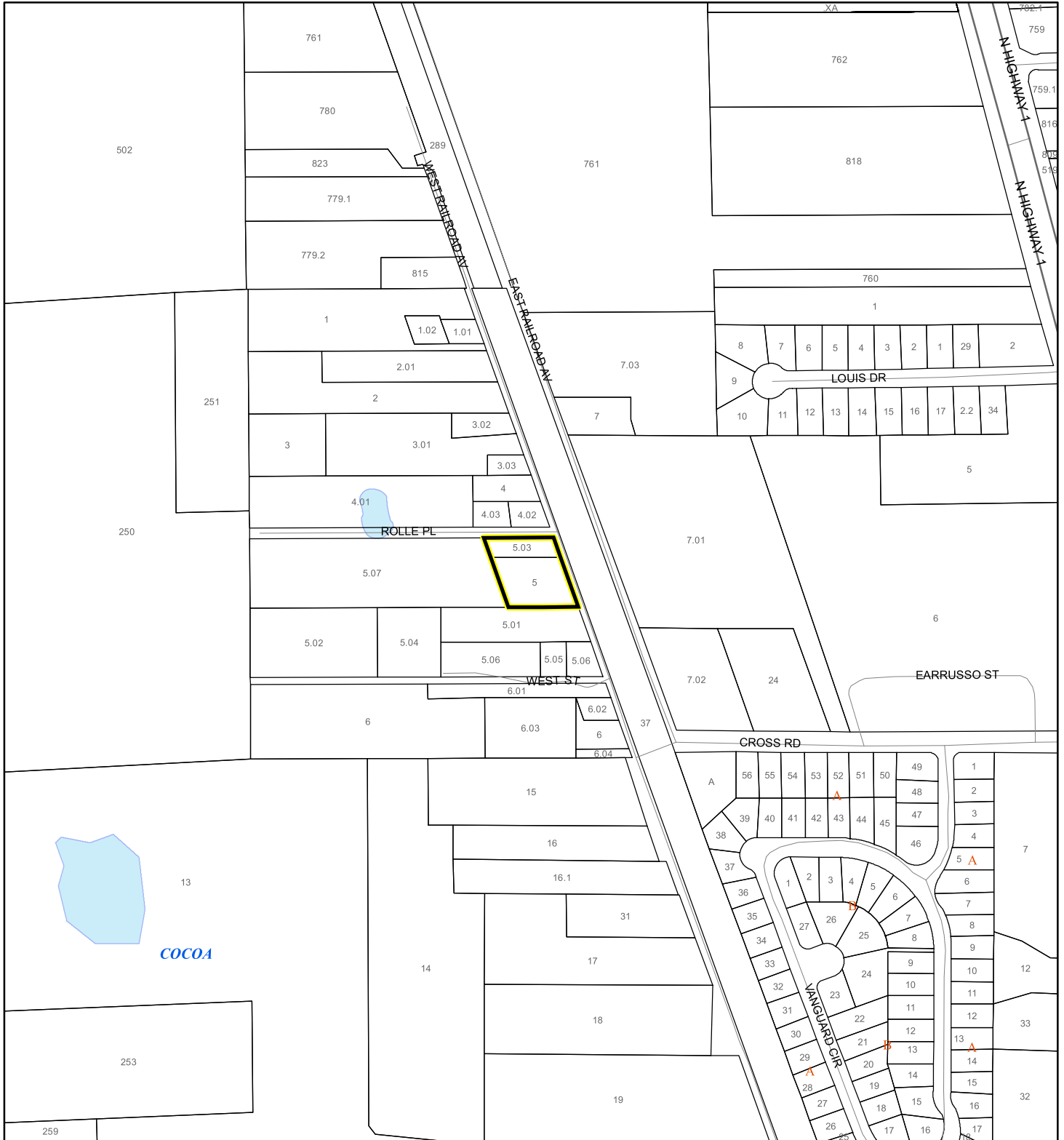
 Subject Property

 Parcels

 Eagle Nests  
FWS

# SCRUB JAY OCCUPANCY MAP




AMBEWITH LLC  
25Z00063



1:4,800 or 1 inch = 400 feet

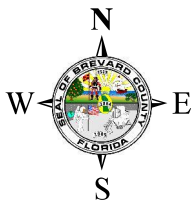
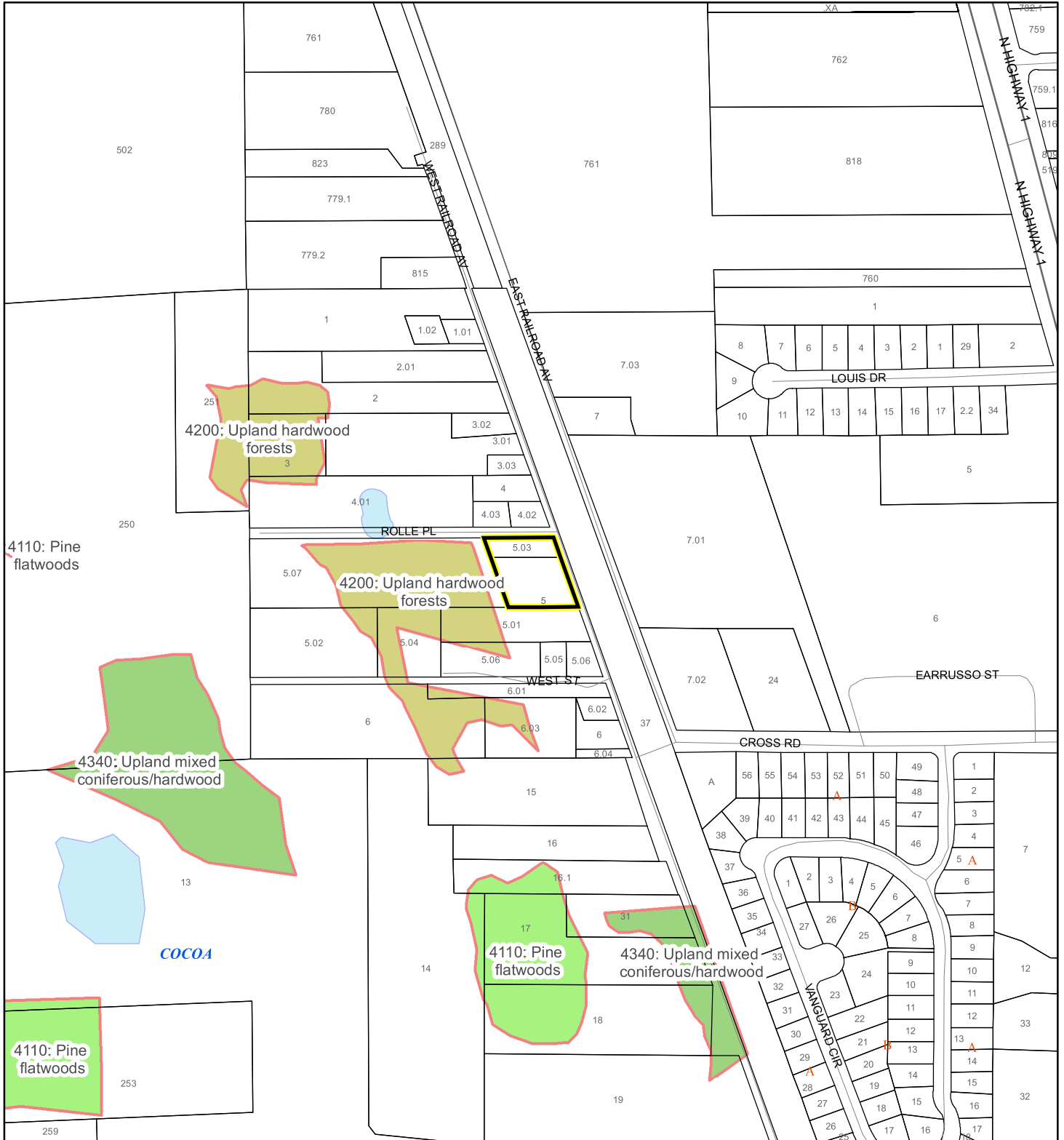
This map was compiled from recorded documents and does not reflect an actual survey. The Brevard County Board of County Commissioners does not assume responsibility for errors or omissions hereon.

Produced by BoCC - GIS Date: 12/31/2025

-  Subject Property
-  Parcels
-  Scrub Jay Occupancy

# SJRWMD FLUCCS UPLAND FORESTS - 4000 Series MAP

AMBEWITH LLC  
25Z00063



1:4,800 or 1 inch = 400 feet

This map was compiled from recorded documents and does not reflect an actual survey. The Brevard County Board of County Commissioners does not assume responsibility for errors or omissions hereon.

Produced by BoCC - GIS Date: 12/31/2025

## SJRWMD FLUCCS Upland Forests

- Upland Coniferous Forest - 4100 Series
- Upland Hardwood Forest - 4200 Series
- Upland Mixed Forest - 4300 Series
- Tree Plantations - 4400 Series

Subject Property  Parcels