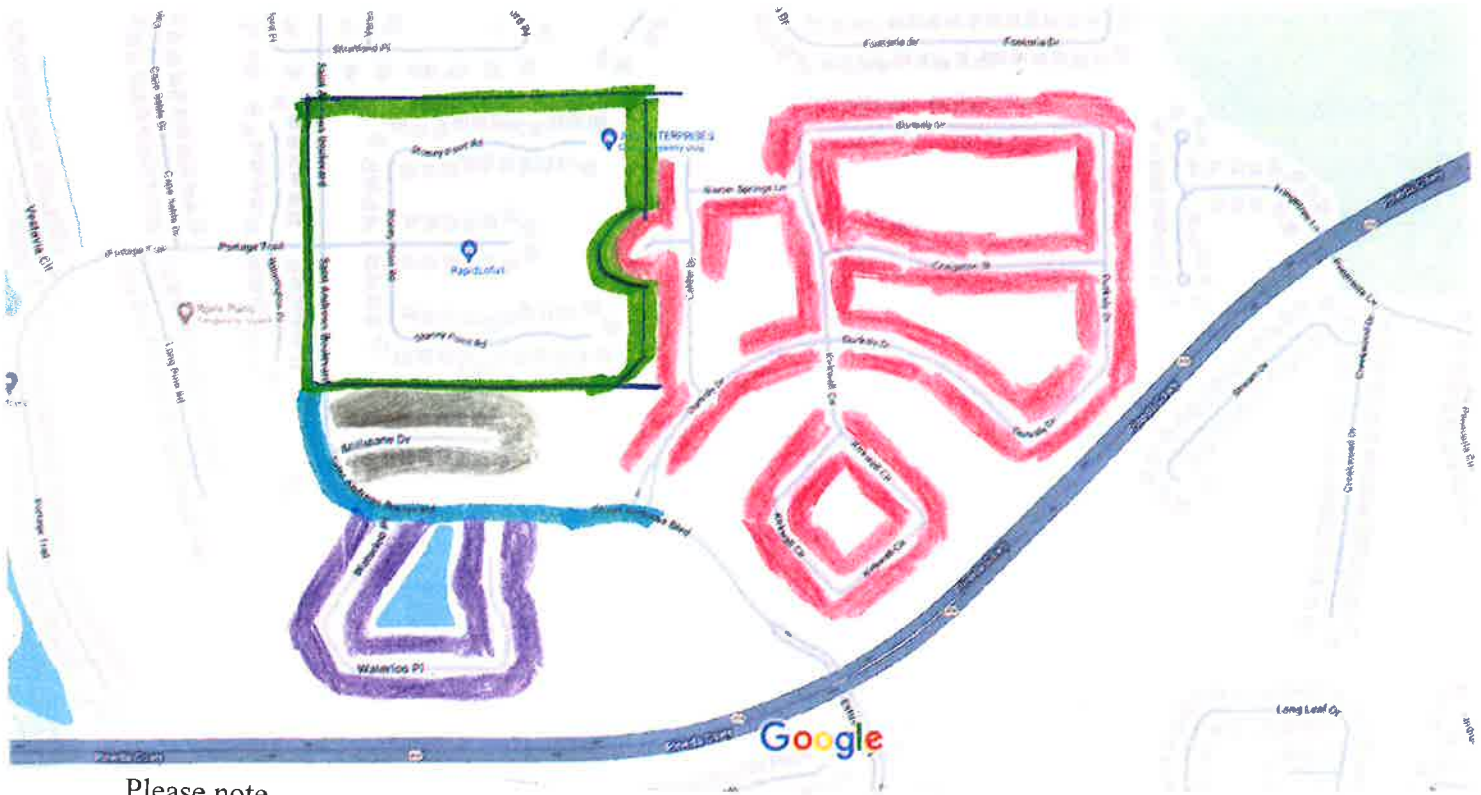



# Subdivisions off St. Andrews Blvd.



Please note.

St. Andrews Isle Subdivision outlined in Green includes St. Andrews Boulevard   
Golf Cart usage is already authorized on the streets/roads in St. Andrew's Isle Subdivision which is outside and south of the Suntree PUD.

## Subdivisions

Brisbane Point Subdivision 

Brisbane Isle Subdivision 

St. Andrews Manor Subdivision 

All of these subdivisions are gated.

The portion in blue is the part of St. Andrews Boulevard where golf cart usage is proposed to be authorized in this ordinance. 