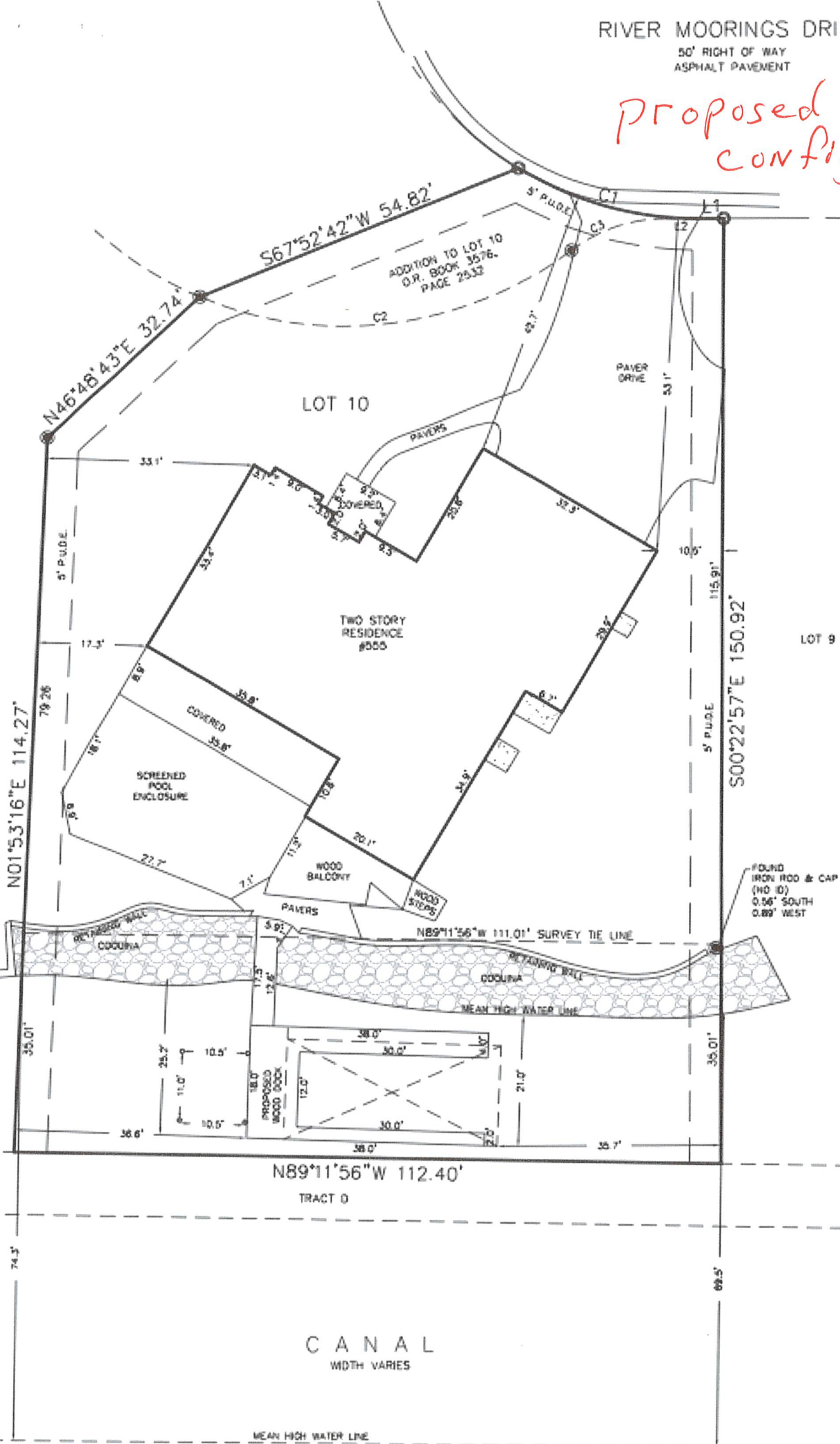


RIVER MOORINGS DRIVE
50' RIGHT OF WAY
ASPHALT PAVEMENT

*Proposed Dock
configuration*



L1
N89°38'27"E 4.1'

L2
N89°38'27"E 5.3'

C1
DELTA 31°31'35"
RADIUS 55.00'
LENGTH 30.26'

C2
DELTA 59°47'57"
RADIUS 60.00'
LENGTH 62.62'

C3
DELTA 36°49'47"
RADIUS 25.00'
LENGTH 16.07'

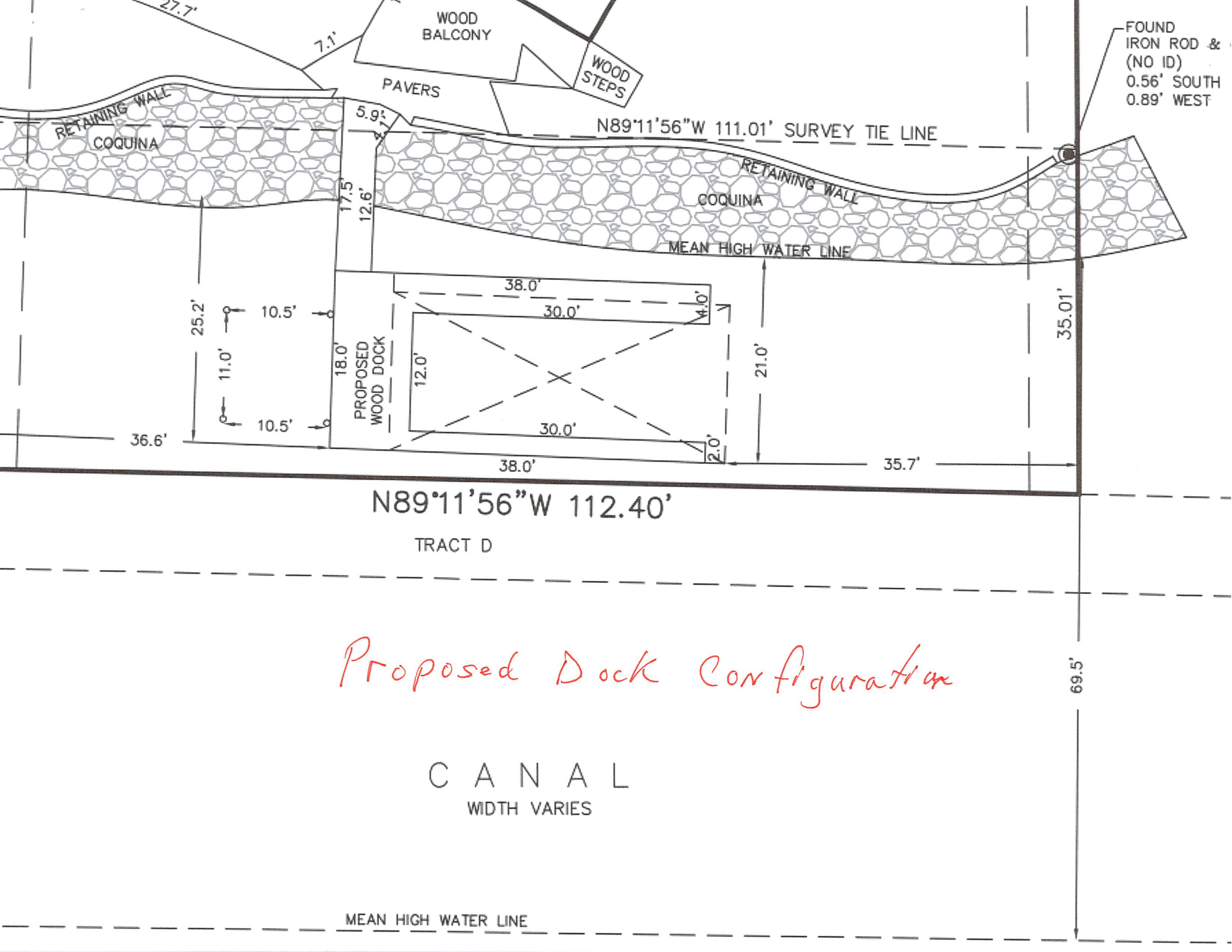
LOT 9

N89°11'56"W 112.40'

TRACT 0

CANAL
WIDTH VARIES

MEAN HIGH WATER LINE



FOUND
IRON ROD &
(NO ID)
0.56' SOUTH
0.89' WEST

WOOD
BALCONY

WOOD
STEPS

PAVERS

RETAINING WALL

COQUINA

N89°11'56"W 111.01' SURVEY TIE LINE

RETAINING WALL

COQUINA

MEAN HIGH WATER LINE

PROPOSED
WOOD DOCK

N89°11'56"W 112.40'

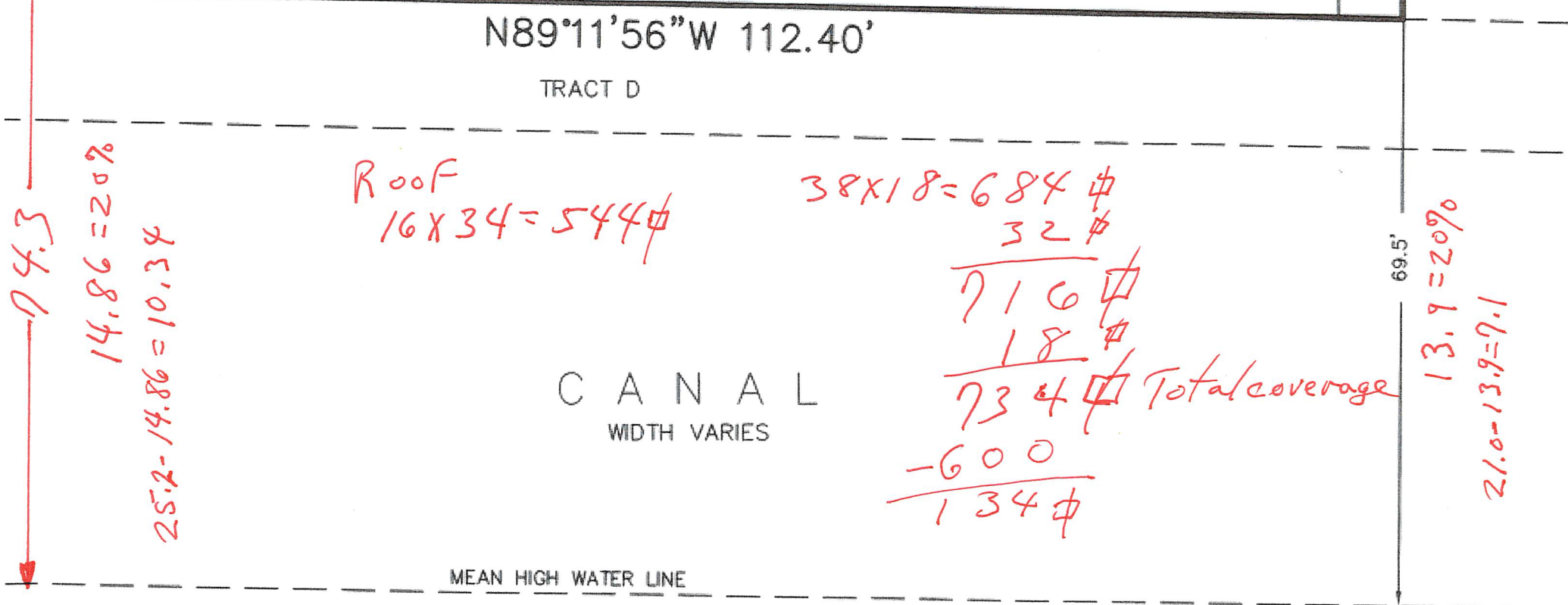
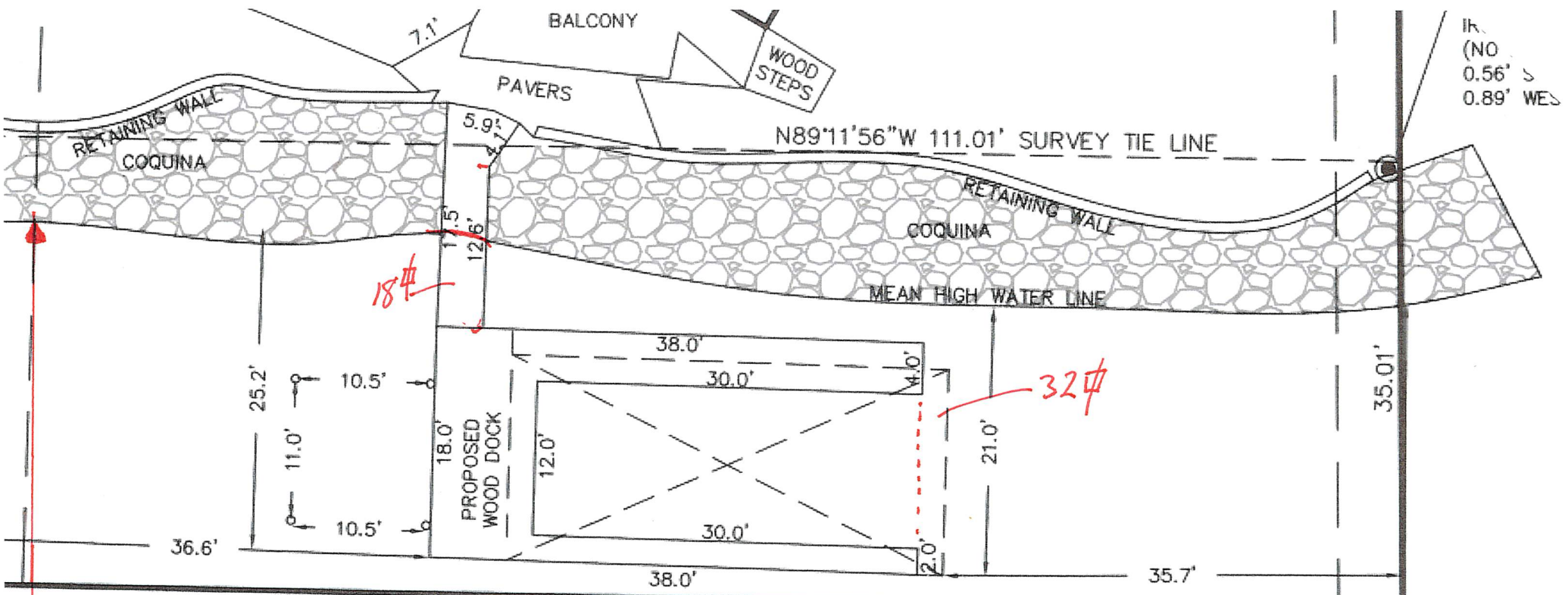
TRACT D

Proposed Dock Configuration

CANAL

WIDTH VARIES

MEAN HIGH WATER LINE



IR.
(NO
0.56' >
0.89' WES

N89°11'56"W 112.40'

TRACT D

CANAL
WIDTH VARIES

Roof
16 x 34 = 544φ

38 x 18 = 684φ
32φ

716φ
18φ
734φ Total coverage

-600
134φ

13.9 = 20%
21.0 - 13.9 = 7.1

74.3
14.86 = 20%
25.2 - 14.86 = 10.34

MEAN HIGH WATER LINE

5-19-26

~~3-27-26~~

324 Total Dock
SQUARE FEET

Slip Well @ 12'x32'
= 384 SQ FT coverage
by roof = Good ✓
less than 500

Covered Roof
@ 16'x34' = 544 SQUARE FEET

172 + 18 = 190
~~204~~ SQ FT total NOT
UNDER Covered DOCK =
734 ~~216~~ ~~748~~ SQ FT Total
Per Code = ~~448~~ SQ FT
OVER ~~116~~ 134
(+ 18 walkway)



Total Roof
SQ' = 544

Total Dock
SQ' = 324

Combined Total
SQ' = 868 FOR COST

OPTION B
SCOTT FAMILY
DOCK CONCEPT

