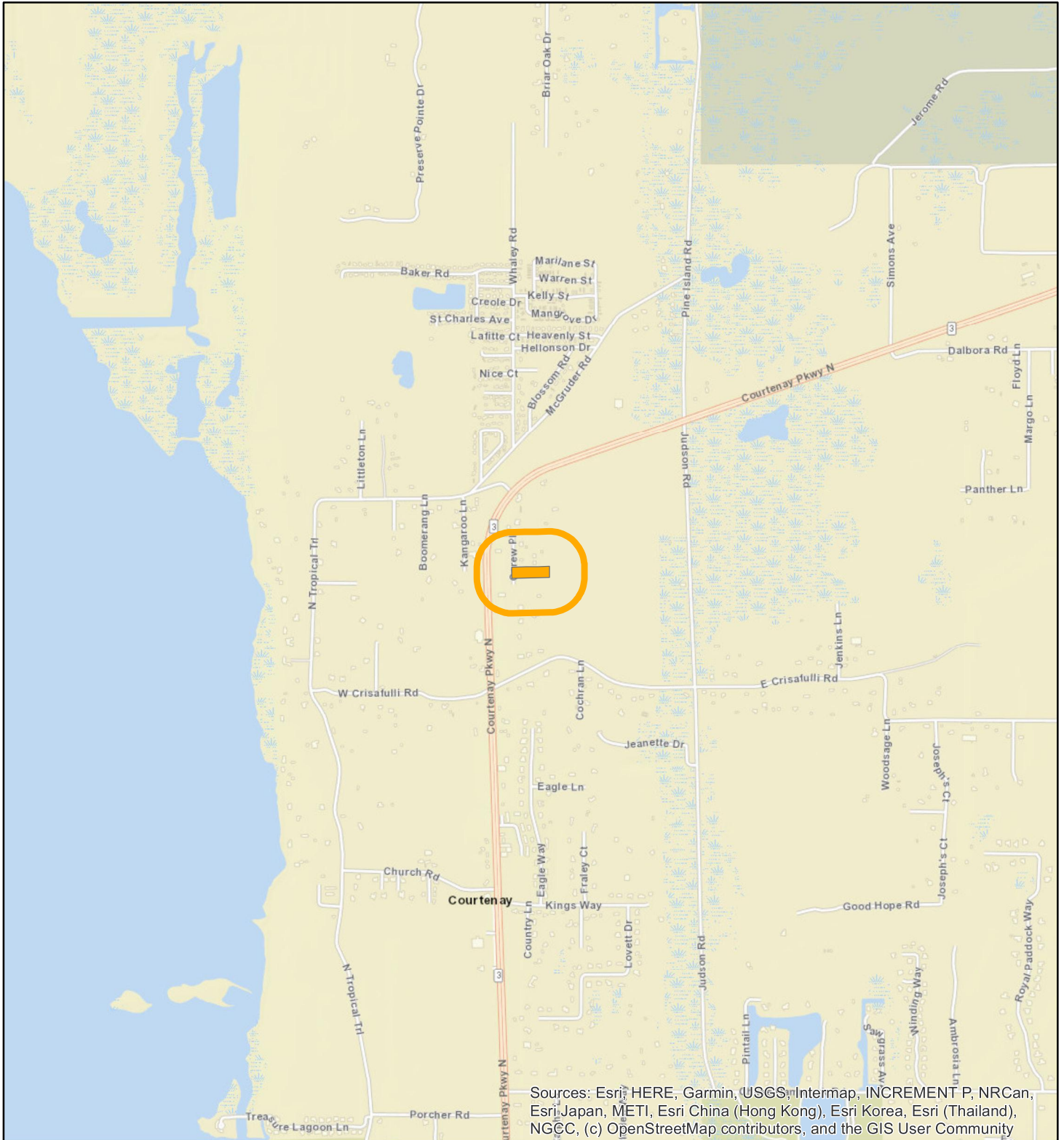


LOCATION MAP

FALANGA, ANTHONY J

26Z00017



Sources: Esri, HERE, Garmin, USGS, Intermap, INCREMENT P, NRCan, Esri Japan, METI, Esri China (Hong Kong), Esri Korea, Esri (Thailand), NGCC, (c) OpenStreetMap contributors, and the GIS User Community





1:24,000 or 1 inch = 2,000 feet

Buffer Distance: 500 feet

This map was compiled from recorded documents and does not reflect an actual survey. The Brevard County Board of County Commissioners does not assume responsibility for errors or omissions hereon.

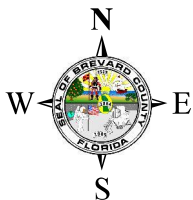
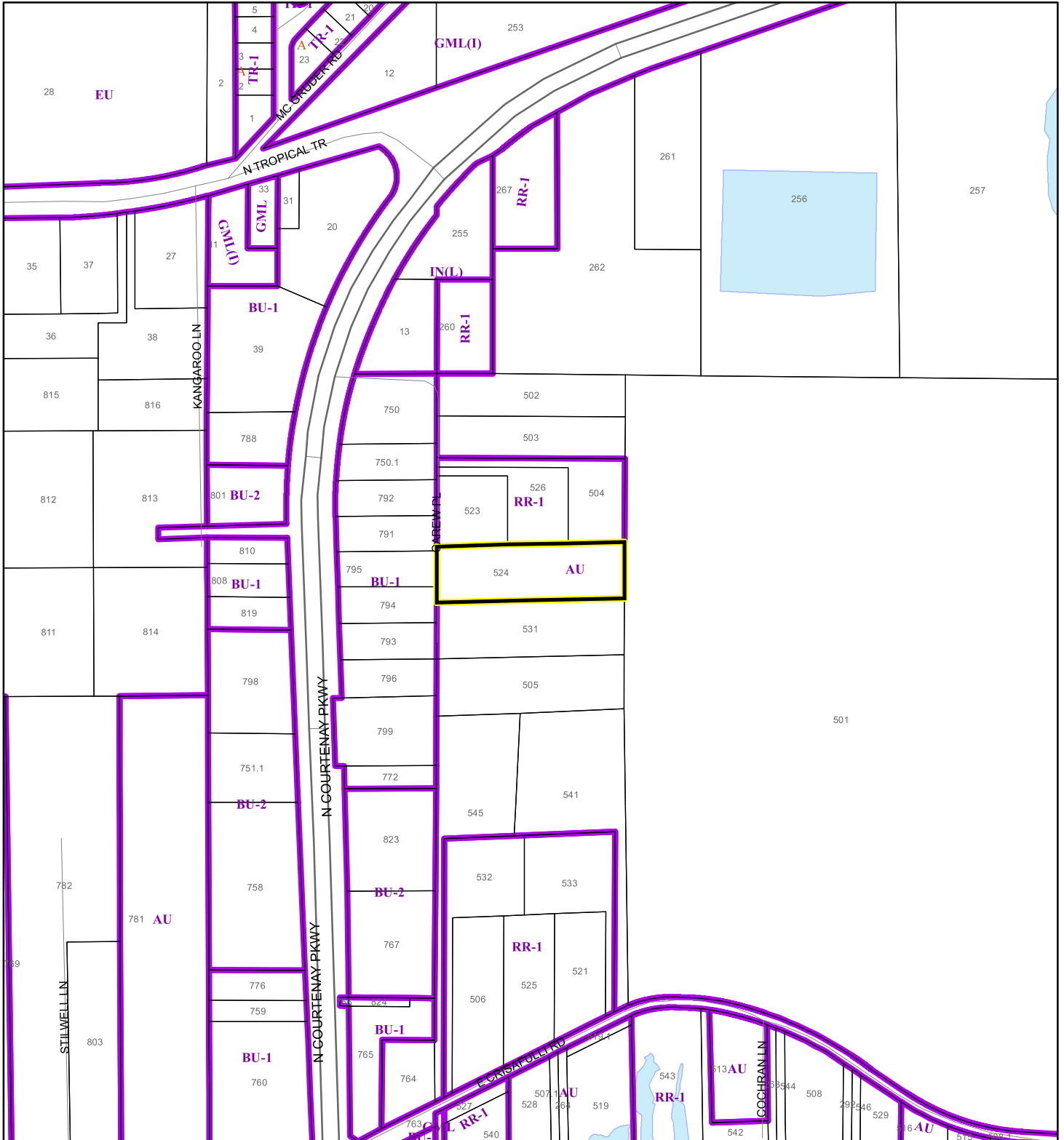
Produced by BoCC - GIS Date: 4/7/2026

-  Buffer
-  Subject Property


ZONING MAP

FALANGA, ANTHONY J

26Z00017



1:4,800 or 1 inch = 400 feet

 Subject Property

 Parcels

 Zoning

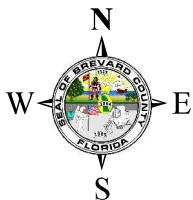
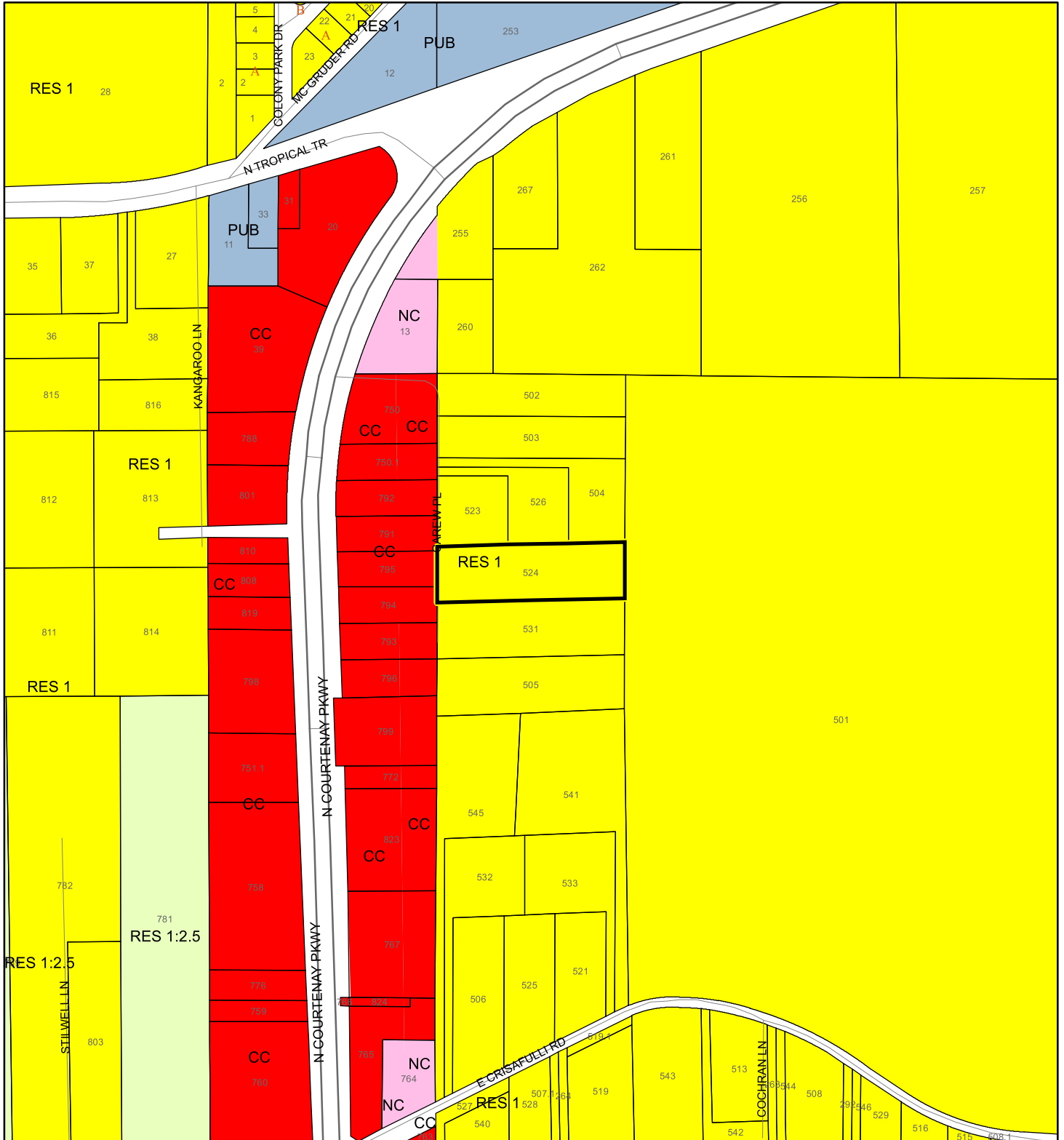
This map was compiled from recorded documents and does not reflect an actual survey. The Brevard County Board of County Commissioners does not assume responsibility for errors or omissions hereon.

Produced by BoCC - GIS Date: 4/7/2026



FUTURE LAND USE MAP

FALANGA, ANTHONY J

26Z00017



1:4,800 or 1 inch = 400 feet

-  Subject Property
-  Parcels

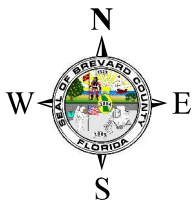
This map was compiled from recorded documents and does not reflect an actual survey. The Brevard County Board of County Commissioners does not assume responsibility for errors or omissions hereon.

Produced by BoCC - GIS Date: 4/7/2026

AERIAL MAP

FALANGA, ANTHONY J

26Z00017




1:2,400 or 1 inch = 200 feet

PHOTO YEAR: 2025

This map was compiled from recorded documents and does not reflect an actual survey. The Brevard County Board of County Commissioners does not assume responsibility for errors or omissions hereon.

Produced by BoCC - GIS Date: 4/7/2026

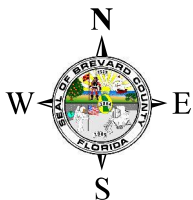
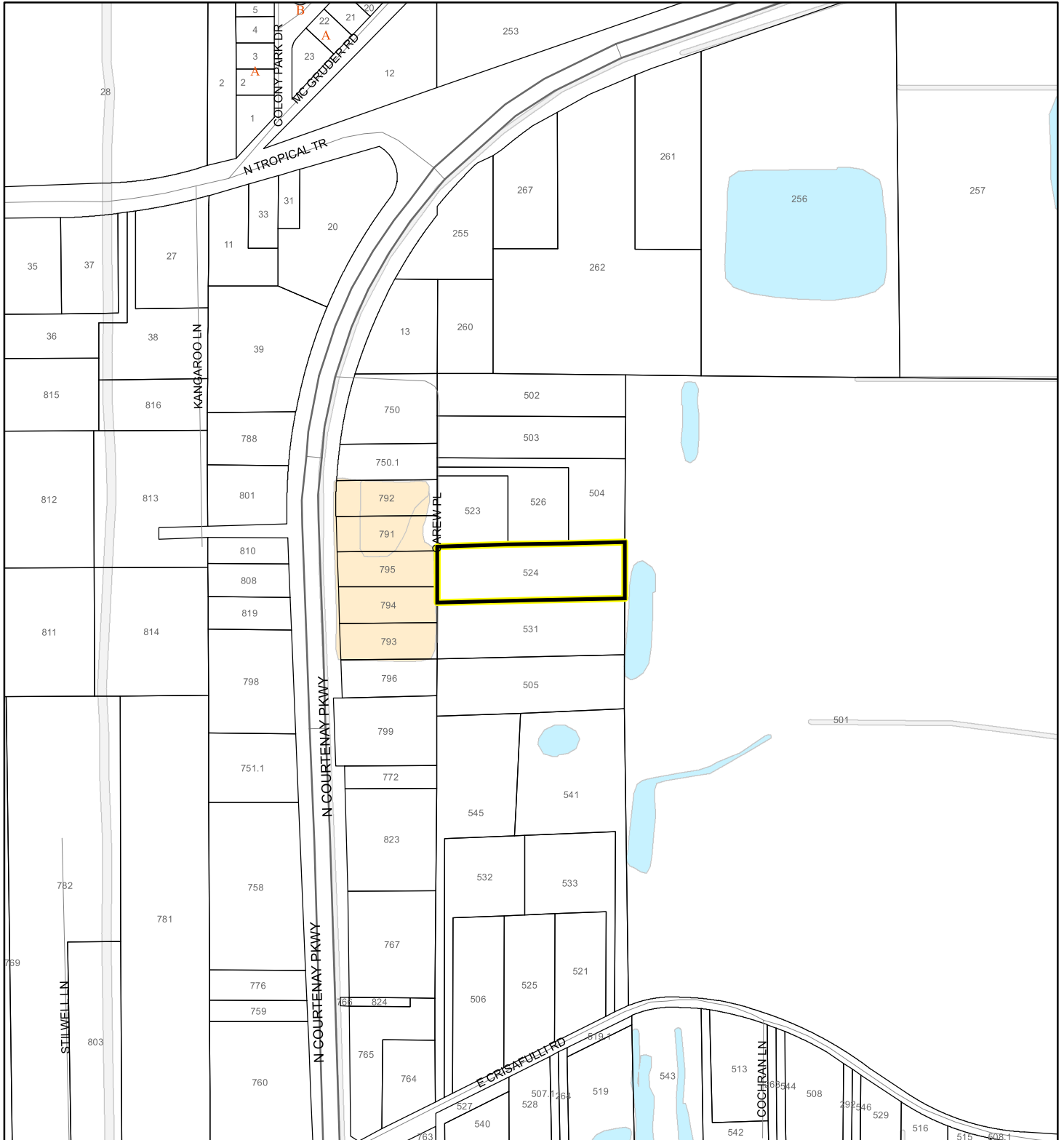
 Subject Property

 Parcels

NWI WETLANDS MAP

FALANGA, ANTHONY J

26Z00017






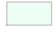

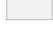

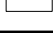


1:4,800 or 1 inch = 400 feet

This map was compiled from recorded documents and does not reflect an actual survey. The Brevard County Board of County Commissioners does not assume responsibility for errors or omissions hereon.

Produced by BoCC - GIS Date: 4/7/2026

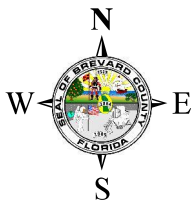
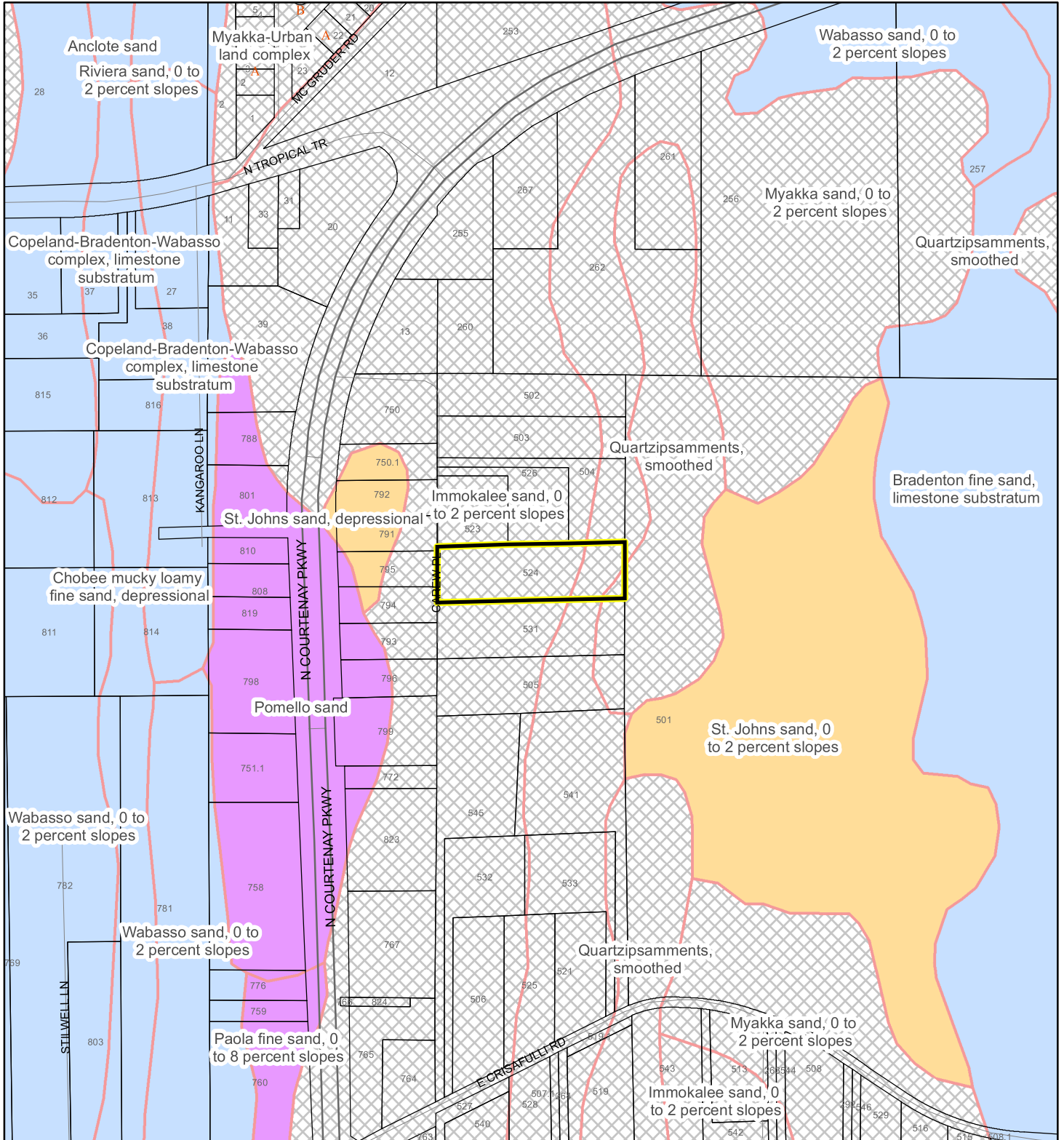
National Wetlands Inventory (NWI)

- | | |
|--|--|
|  Estuarine and Marine Deepwater |  Freshwater Pond |
|  Estuarine and Marine Wetland |  Lake |
|  Freshwater Emergent Wetland |  Other |
|  Freshwater Forested/Shrub Wetland |  Riverine |
| |  Subject Property |
| |  Parcels |

USDA SCSSS SOILS MAP

FALANGA, ANTHONY J

26Z00017



1:4,800 or 1 inch = 400 feet

This map was compiled from recorded documents and does not reflect an actual survey. The Brevard County Board of County Commissioners does not assume responsibility for errors or omissions hereon.

Produced by BoCC - GIS Date: 4/7/2026

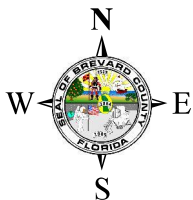
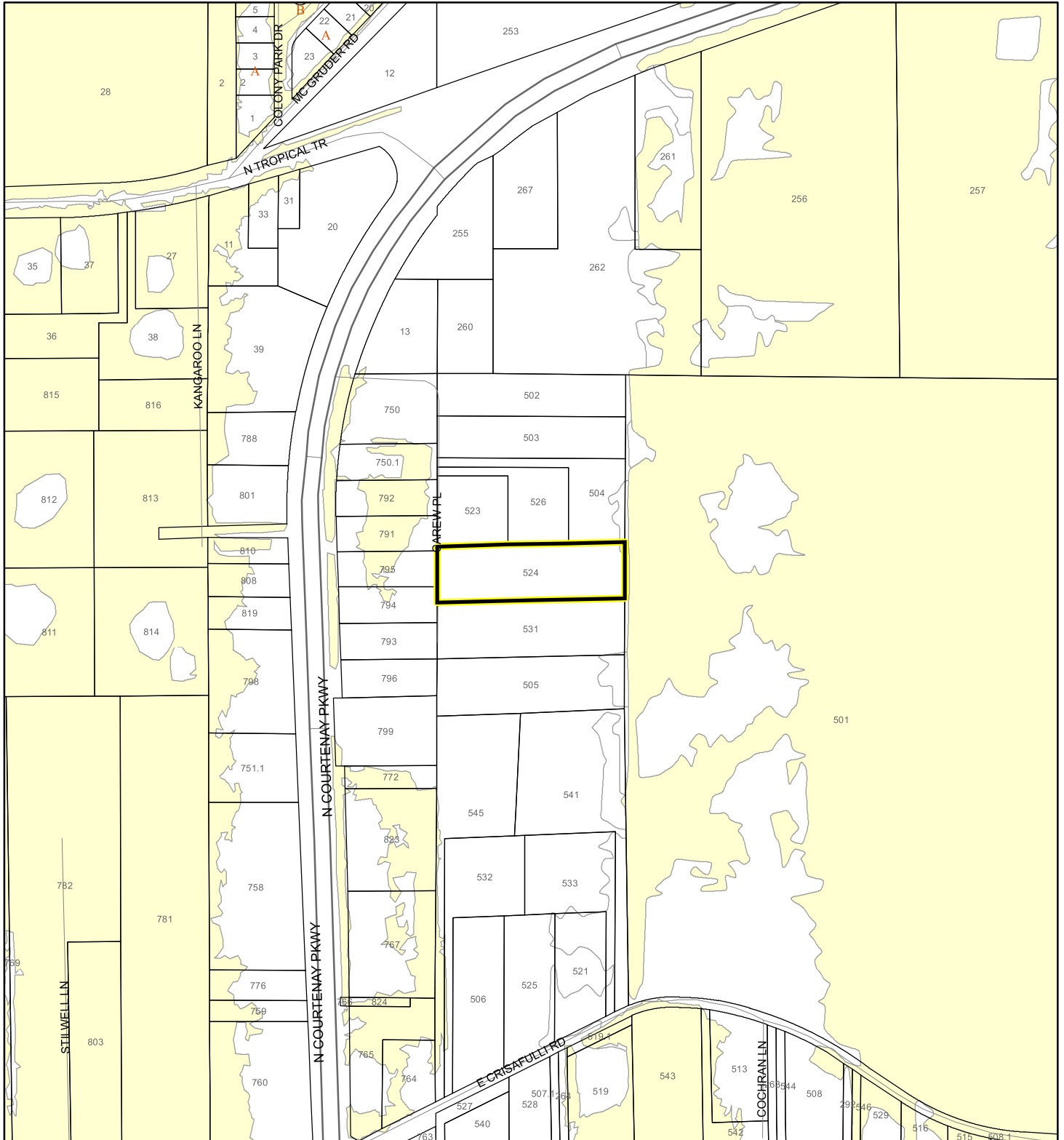
USDA SCSSS Soils

- Aquifer and Hydric
- Aquifer
- Hydric
- None
- Subject Property
- Parcels

FEMA FLOOD ZONES MAP

FALANGA, ANTHONY J

26Z00017



1:4,800 or 1 inch = 400 feet

This map was compiled from recorded documents and does not reflect an actual survey. The Brevard County Board of County Commissioners does not assume responsibility for errors or omissions hereon.

Produced by BoCC - GIS Date: 4/7/2026

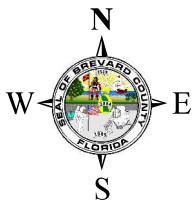
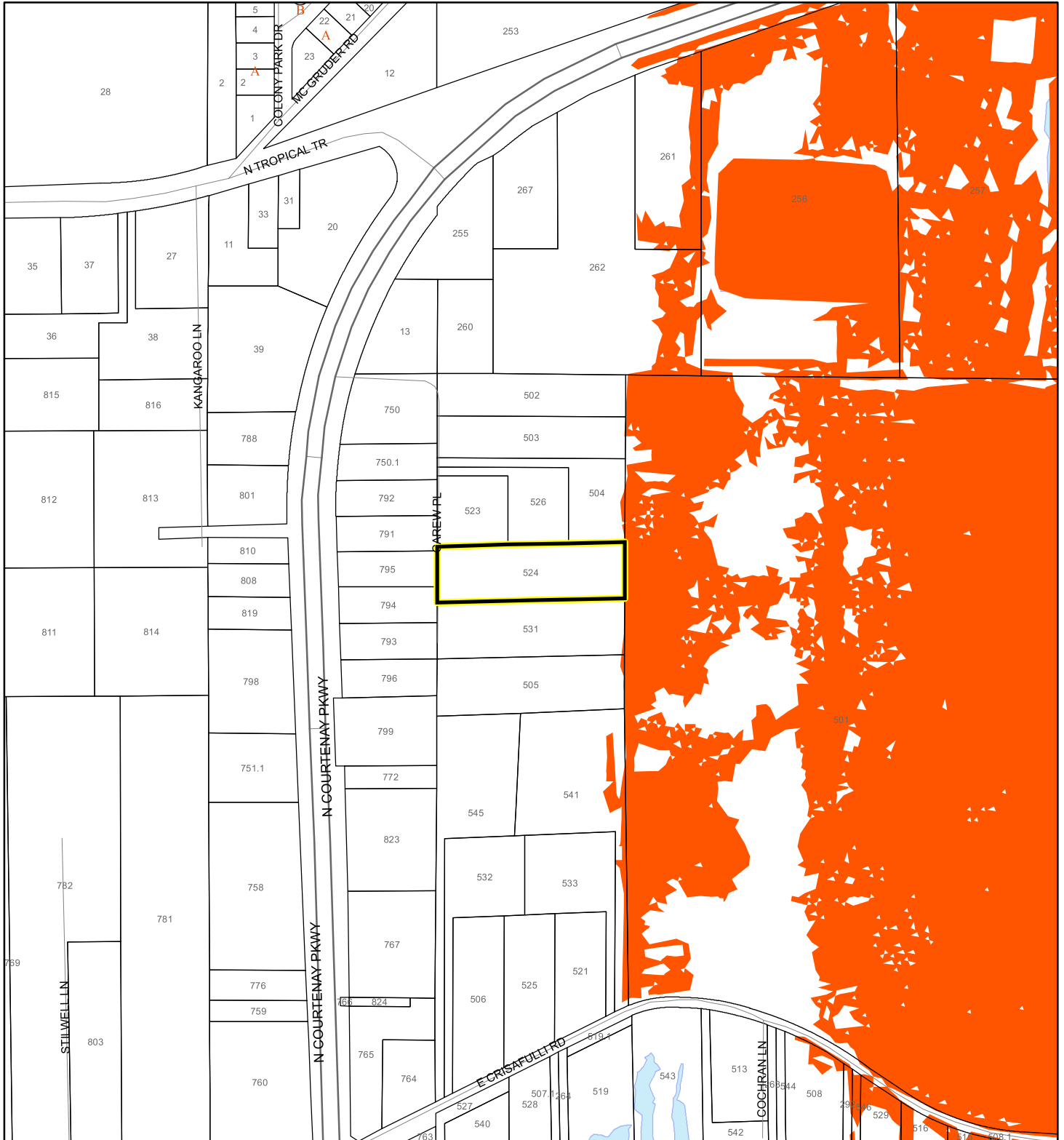
FEMA Flood Zones

- | | | |
|--|--|---|
|  A |  AO |  X |
|  AE |  Open Water | |
|  AH |  VE | |
|  Subject Property |  Parcels | |

COASTAL HIGH HAZARD AREA MAP

FALANGA, ANTHONY J

26Z00017



1:4,800 or 1 inch = 400 feet

This map was compiled from recorded documents and does not reflect an actual survey. The Brevard County Board of County Commissioners does not assume responsibility for errors or omissions hereon.

Produced by BoCC - GIS Date: 4/7/2026

 Subject Property

 Parcels

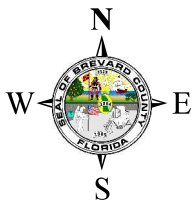
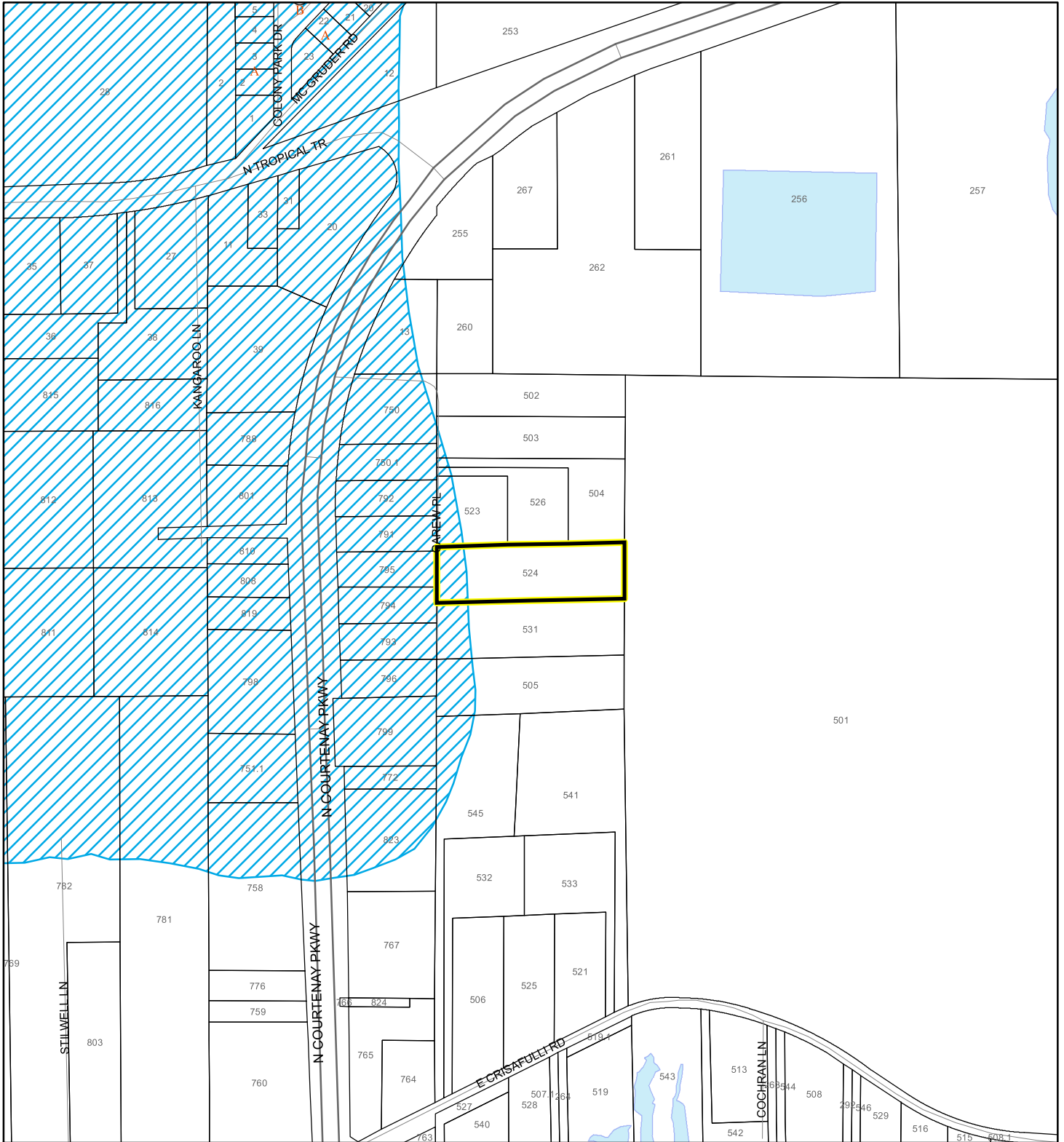
Coastal High Hazard Area

 SurgeZoneCat1

SCRUB JAY OCCUPANCY MAP

FALANGA, ANTHONY J




26Z00017



1:4,800 or 1 inch = 400 feet

This map was compiled from recorded documents and does not reflect an actual survey. The Brevard County Board of County Commissioners does not assume responsibility for errors or omissions hereon.

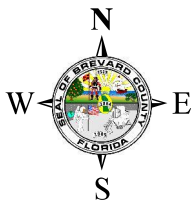
Produced by BoCC - GIS Date: 4/7/2026

-  Subject Property
-  Parcels
-  Scrub Jay Occupancy

SJRWMD FLUCCS UPLAND FORESTS - 4000 Series MAP

FALANGA, ANTHONY J

26Z00017



1:4,800 or 1 inch = 400 feet

SJRWMD FLUCCS Upland Forests

- Upland Coniferous Forest - 4100 Series
- Upland Hardwood Forest - 4200 Series
- Upland Mixed Forest - 4300 Series
- Tree Plantations - 4400 Series

This map was compiled from recorded documents and does not reflect an actual survey. The Brevard County Board of County Commissioners does not assume responsibility for errors or omissions hereon.

Produced by BoCC - GIS Date: 4/7/2026

Subject Property Parcels