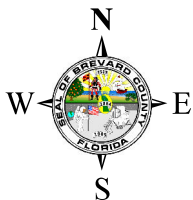
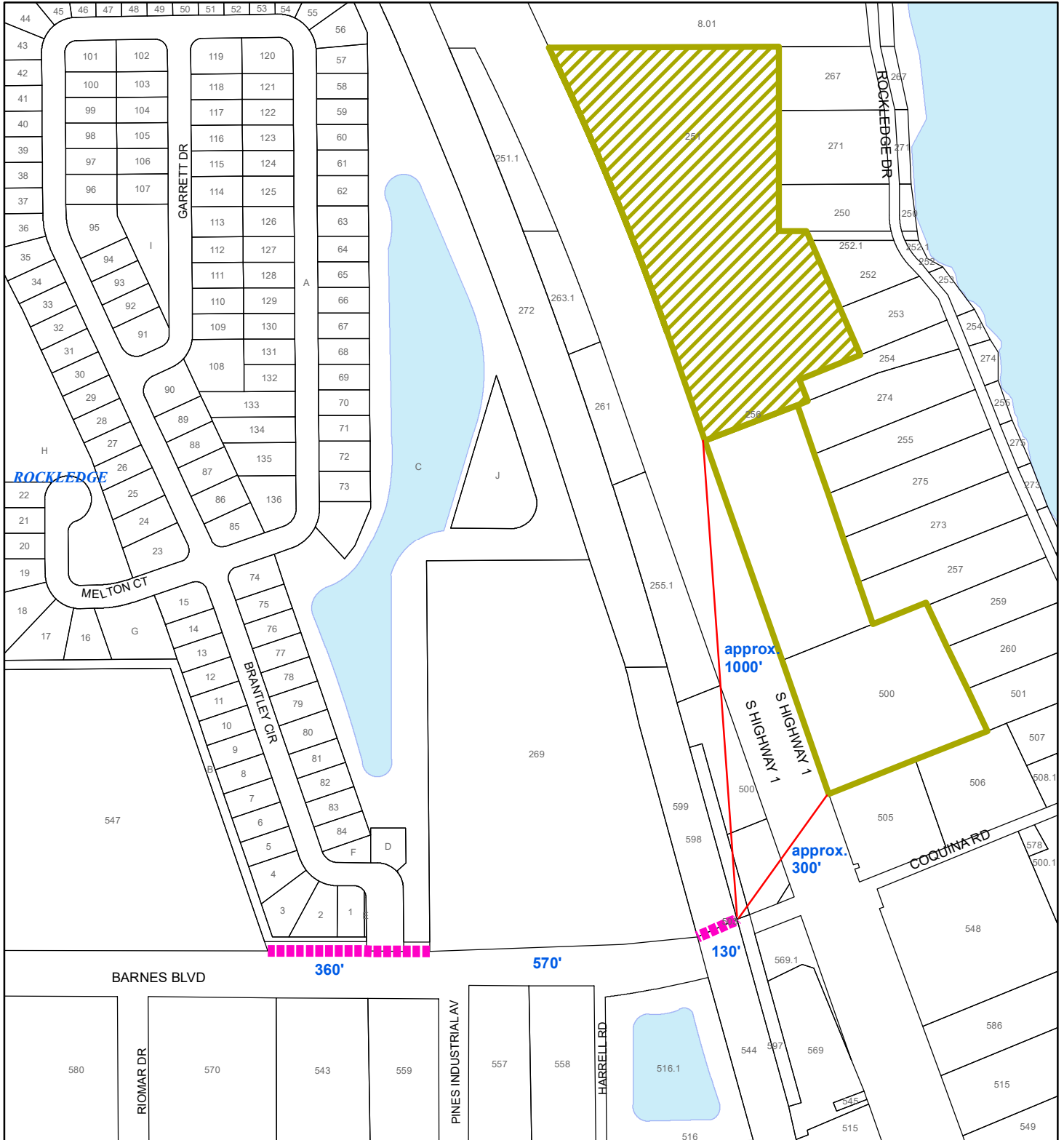






# STORSAFE OF ROCKLEDGE, LLC



1:3,600 or 1 inch = 300 feet

This map was compiled from recorded documents and does not reflect an actual survey. The Brevard County Board of County Commissioners does not assume responsibility for errors or omissions hereon.

Produced by BoCC - GIS Date: 2/28/2024

-  STORSAFE of Rockledge, LLC Property - 23WV00020 Waiver
-  Remainder of Property Owned by StorSafe of Rockledge
-  Parcels
-  Existing Sidewalk