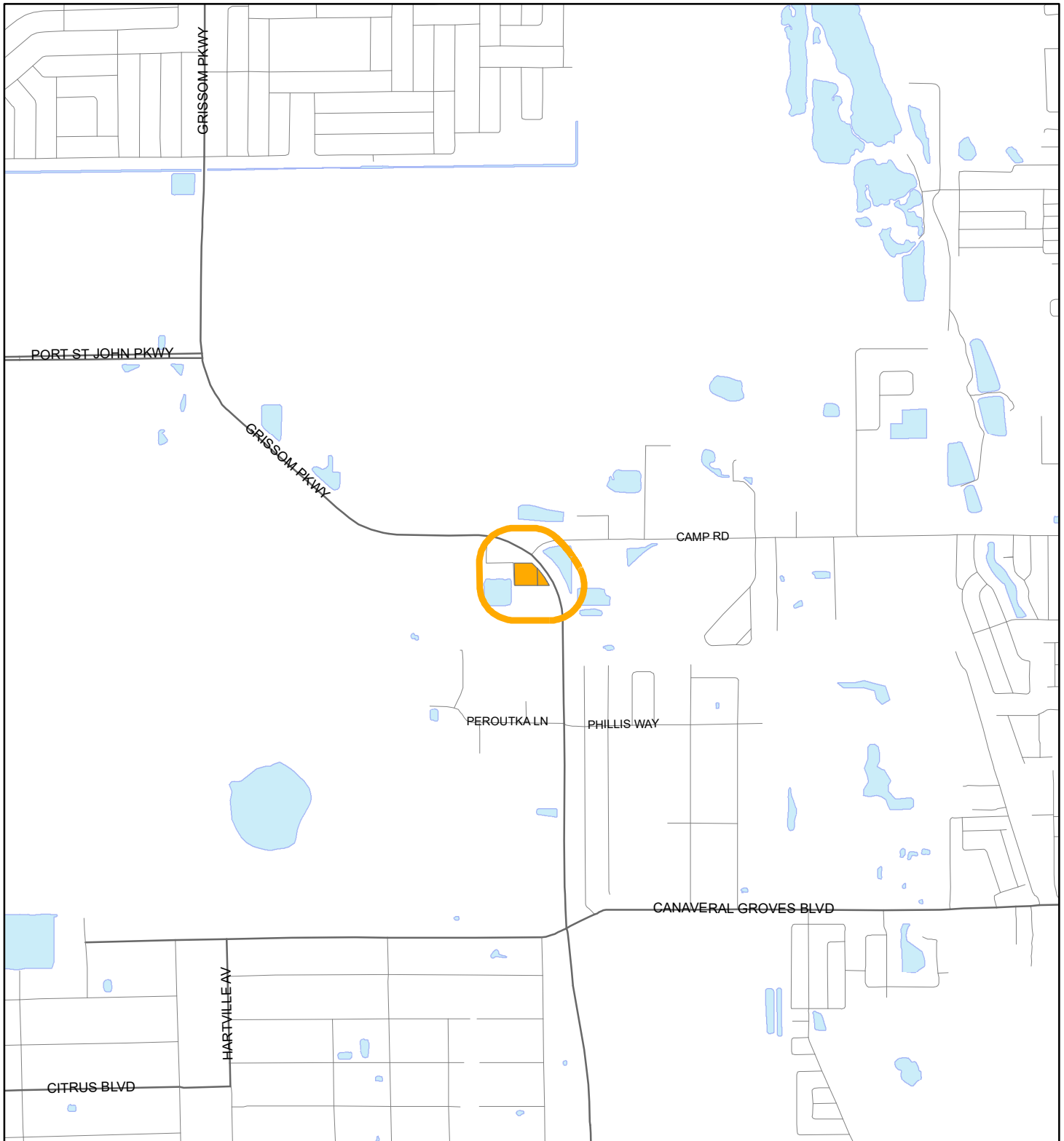


LOCATION MAP

FLORIDA DEALER CENTER LLC

23Z00081





1:24,000 or 1 inch = 2,000 feet

Buffer Distance: 500 feet

This map was compiled from recorded documents and does not reflect an actual survey. The Brevard County Board of County Commissioners does not assume responsibility for errors or omissions hereon.

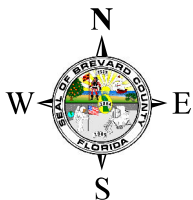
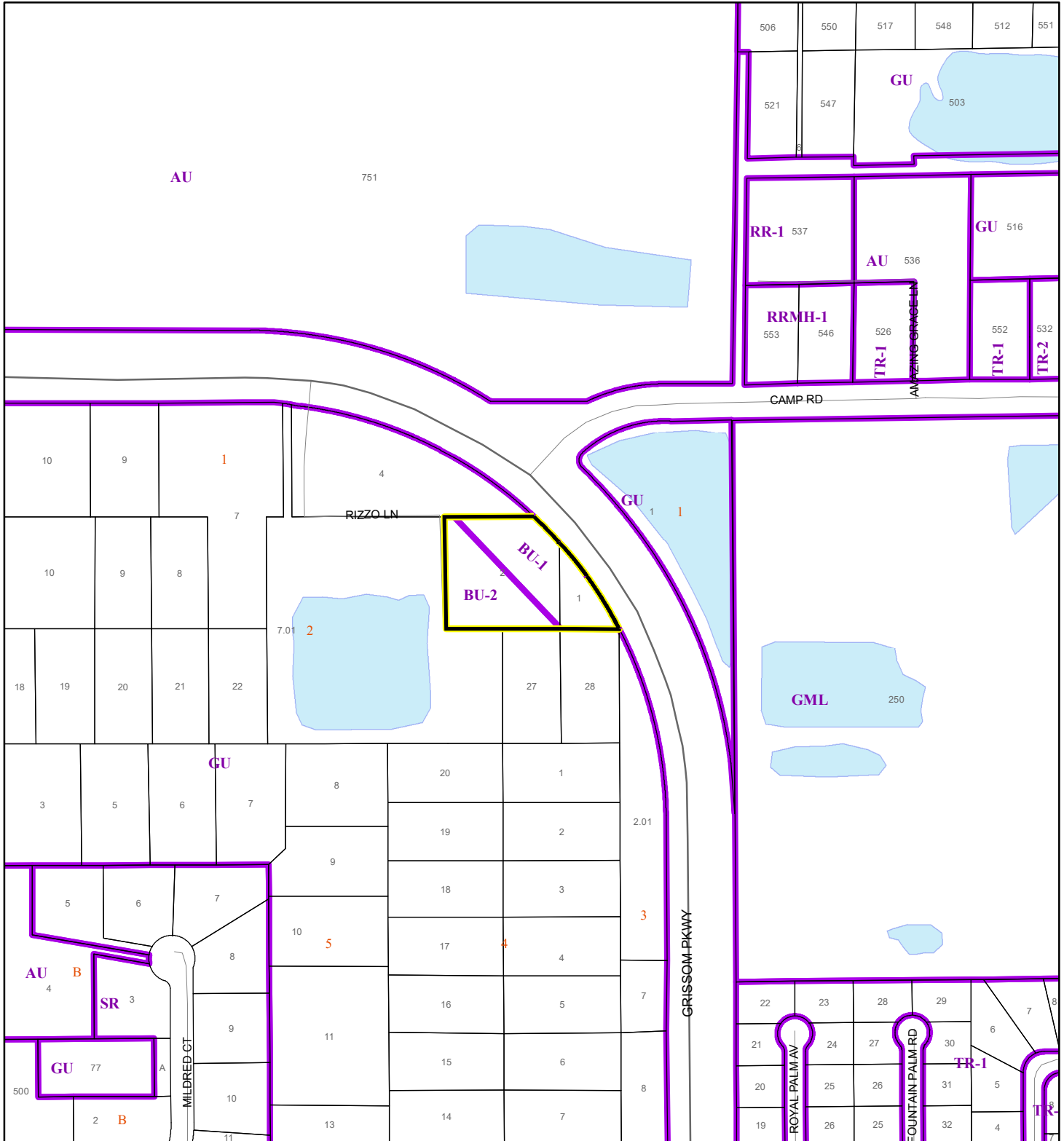
Produced by BoCC - GIS Date: 11/8/2023

 Buffer
 Subject Property

ZONING MAP

FLORIDA DEALER CENTER LLC

23Z00081



1:4,800 or 1 inch = 400 feet

This map was compiled from recorded documents and does not reflect an actual survey. The Brevard County Board of County Commissioners does not assume responsibility for errors or omissions hereon.

Produced by BoCC - GIS Date: 11/8/2023

Subject Property

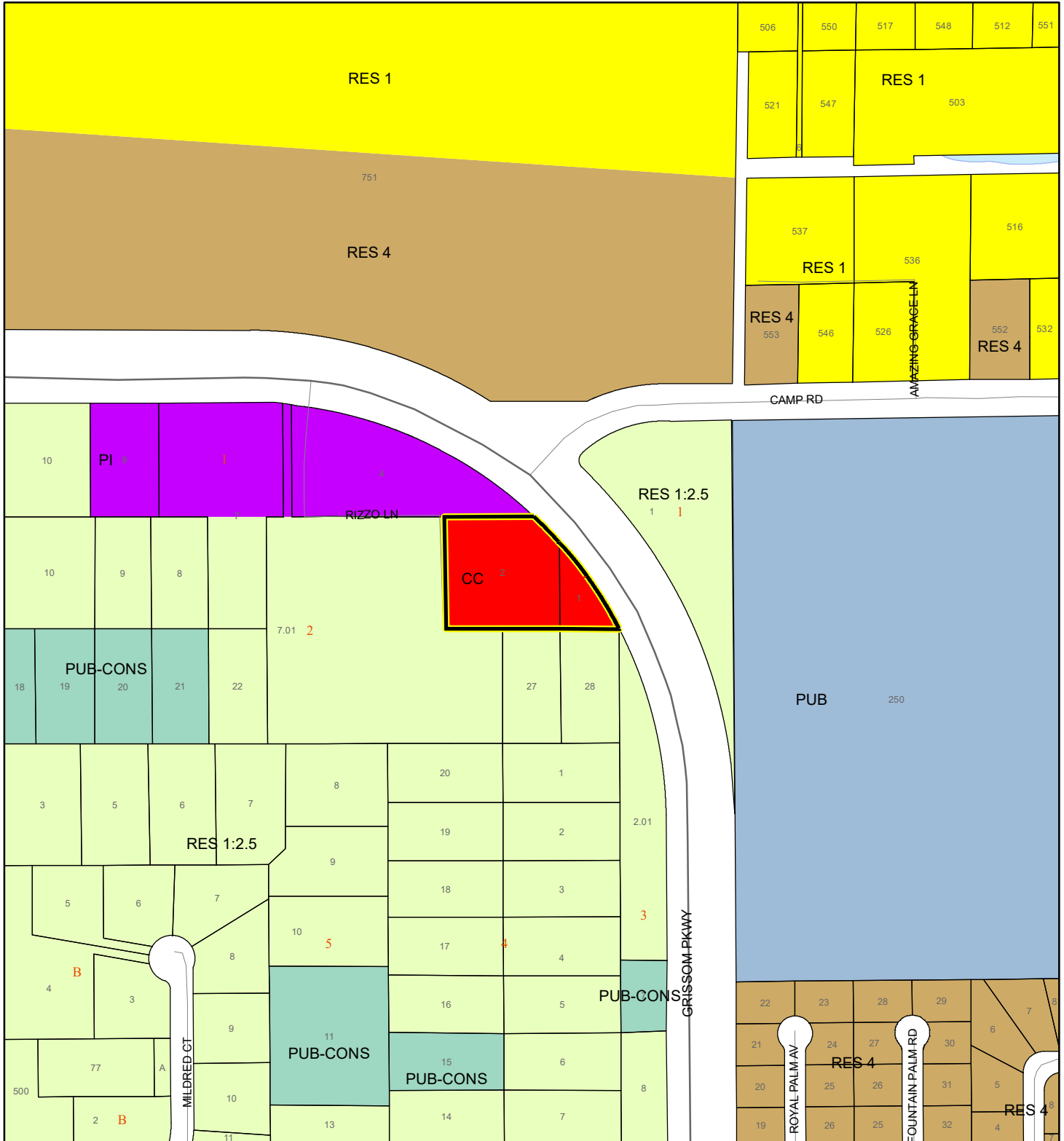
Parcels

Zoning

FUTURE LAND USE MAP

FLORIDA DEALER CENTER LLC



23Z00081



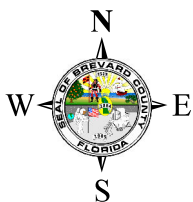
1:4,800 or 1 inch = 400 feet

This map was compiled from recorded documents and does not reflect an actual survey. The Brevard County Board of County Commissioners does not assume responsibility for errors or omissions hereon.

Produced by BoCC - GIS Date: 11/8/2023

 Subject Property
 Parcels

AERIAL MAP
FLORIDA DEALER CENTER LLC
23Z00081





1:4,800 or 1 inch = 400 feet

PHOTO YEAR: 2023

This map was compiled from recorded documents and does not reflect an actual survey. The Brevard County Board of County Commissioners does not assume responsibility for errors or omissions hereon.

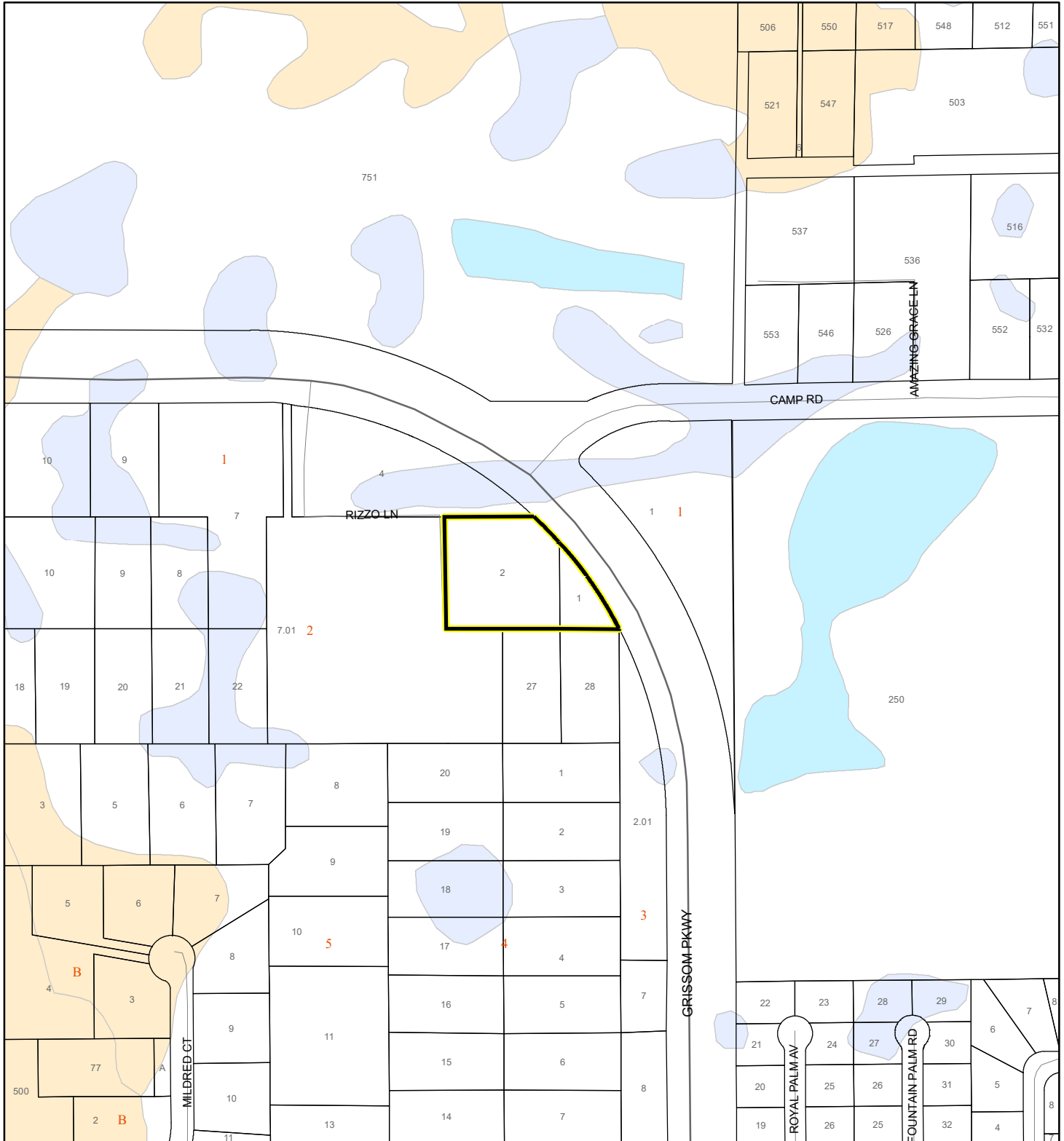
Produced by BoCC - GIS Date: 11/8/2023

 Subject Property
 Parcels

NWI WETLANDS MAP

FLORIDA DEALER CENTER LLC

23Z00081






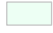

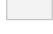

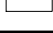


1:4,800 or 1 inch = 400 feet

This map was compiled from recorded documents and does not reflect an actual survey. The Brevard County Board of County Commissioners does not assume responsibility for errors or omissions hereon.

Produced by BoCC - GIS Date: 11/8/2023

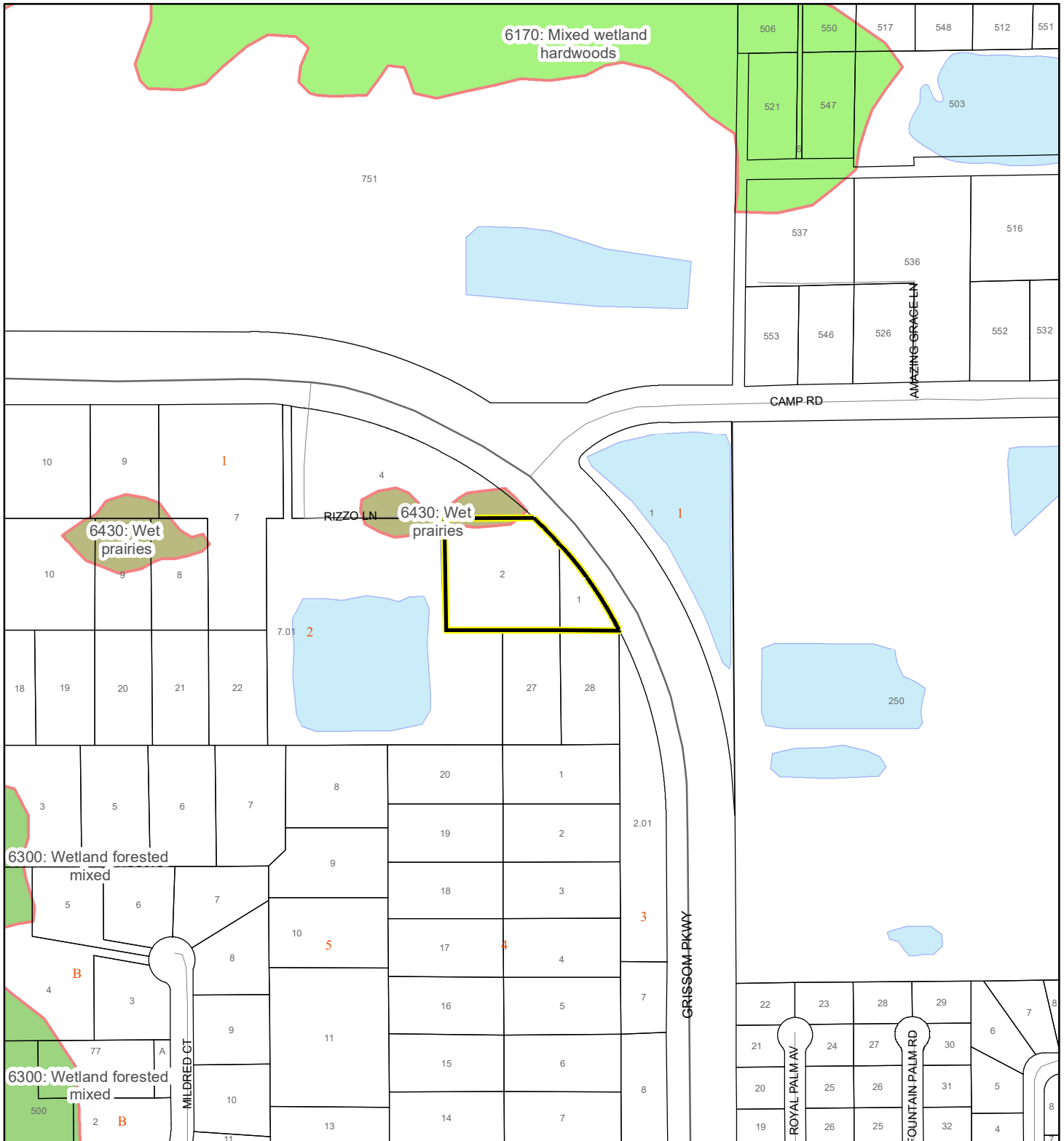
National Wetlands Inventory (NWI)

 Estuarine and Marine Deepwater	 Freshwater Pond
 Estuarine and Marine Wetland	 Lake
 Freshwater Emergent Wetland	 Other
 Freshwater Forested/Shrub Wetland	 Riverine
 Subject Property	
 Parcels	

SJRWMD FLUCCS WETLANDS - 6000 Series MAP

FLORIDA DEALER CENTER LLC

23Z00081



1:4,800 or 1 inch = 400 feet

This map was compiled from recorded documents and does not reflect an actual survey. The Brevard County Board of County Commissioners does not assume responsibility for errors or omissions hereon.

Produced by BoCC - GIS Date: 11/8/2023

SJRWMD FLUCCS WETLANDS

- Wetland Hardwood Forests - Series 6100
- Wetland Coniferous Forest - Series 6200
- Wetland Forested Mixed - Series 6300
- Vegetated Non-Forested Wetlands - Series 6400
- Non-Vegetated Wetland - Series 6500

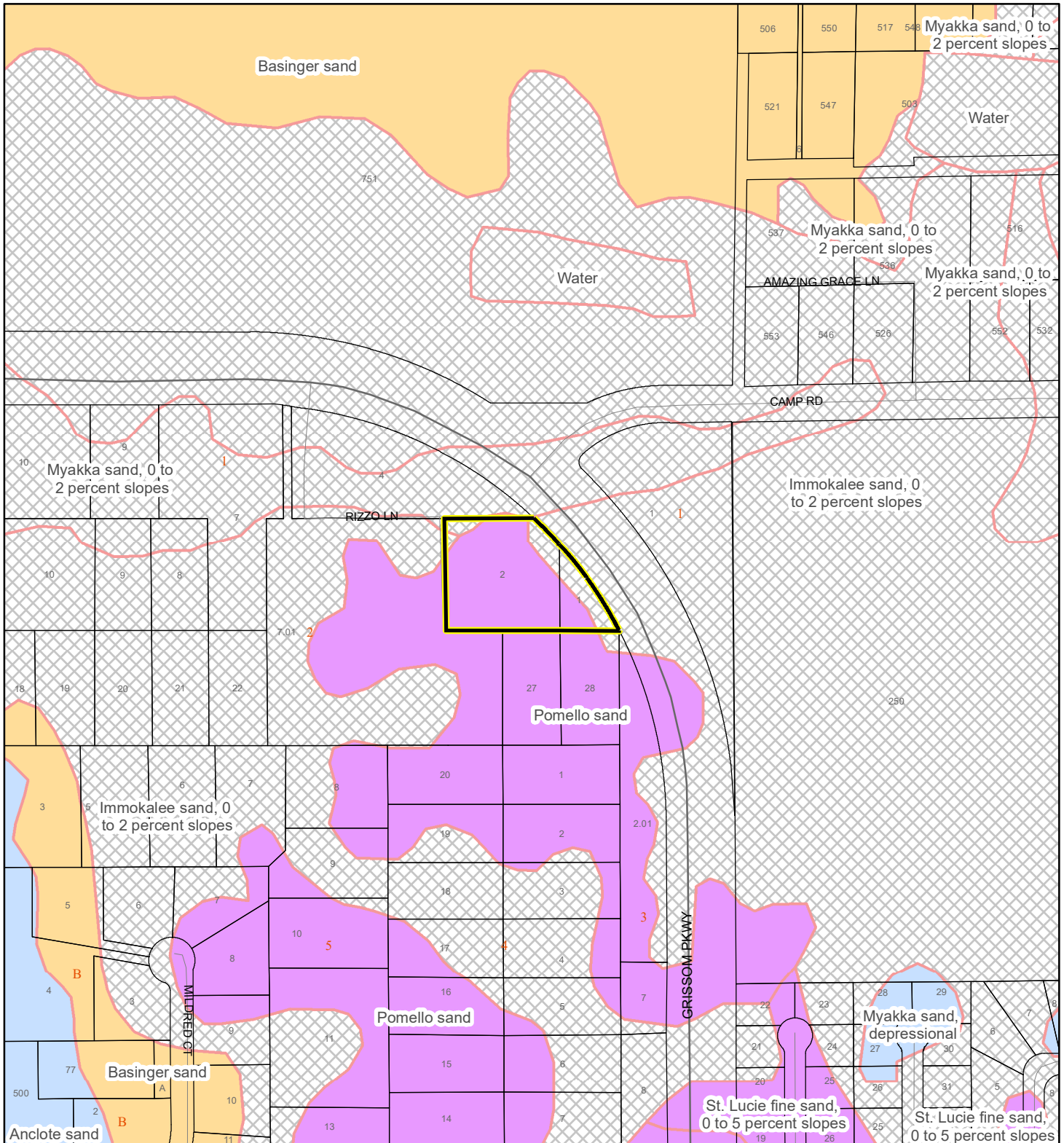
Subject Property

Parcels

USDA SCSSS SOILS MAP

FLORIDA DEALER CENTER LLC

23Z00081



1:4,800 or 1 inch = 400 feet

This map was compiled from recorded documents and does not reflect an actual survey. The Brevard County Board of County Commissioners does not assume responsibility for errors or omissions hereon.

Produced by BoCC - GIS Date: 11/8/2023

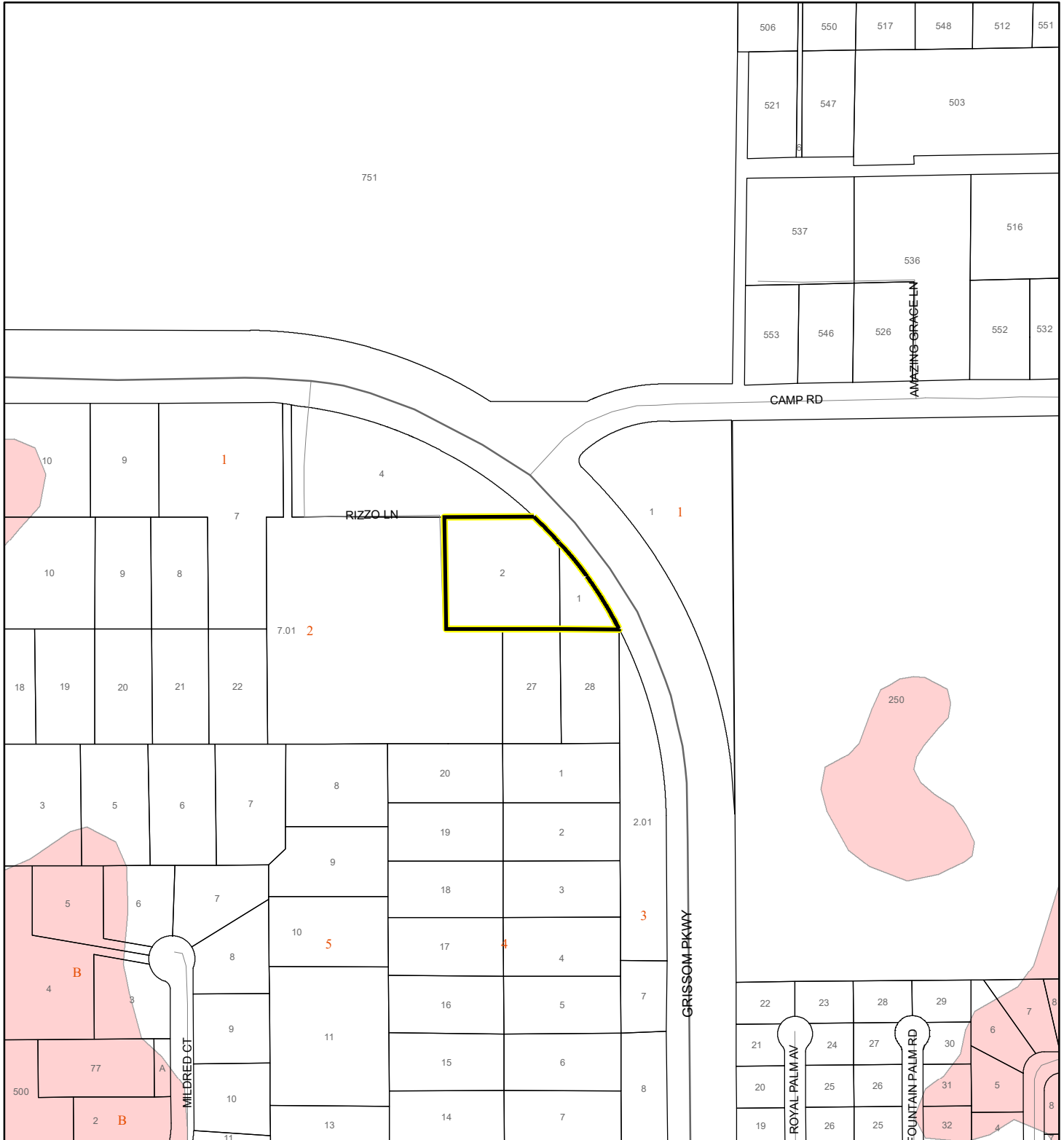
USDA SCSSS Soils

- Aquifer and Hydric
- Aquifer
- Hydric
- None
- Subject Property
- Parcels

FEMA FLOOD ZONES MAP

FLORIDA DEALER CENTER LLC

23Z00081



1:4,800 or 1 inch = 400 feet

This map was compiled from recorded documents and does not reflect an actual survey. The Brevard County Board of County Commissioners does not assume responsibility for errors or omissions hereon.

Produced by BoCC - GIS Date: 11/8/2023

FEMA Flood Zones

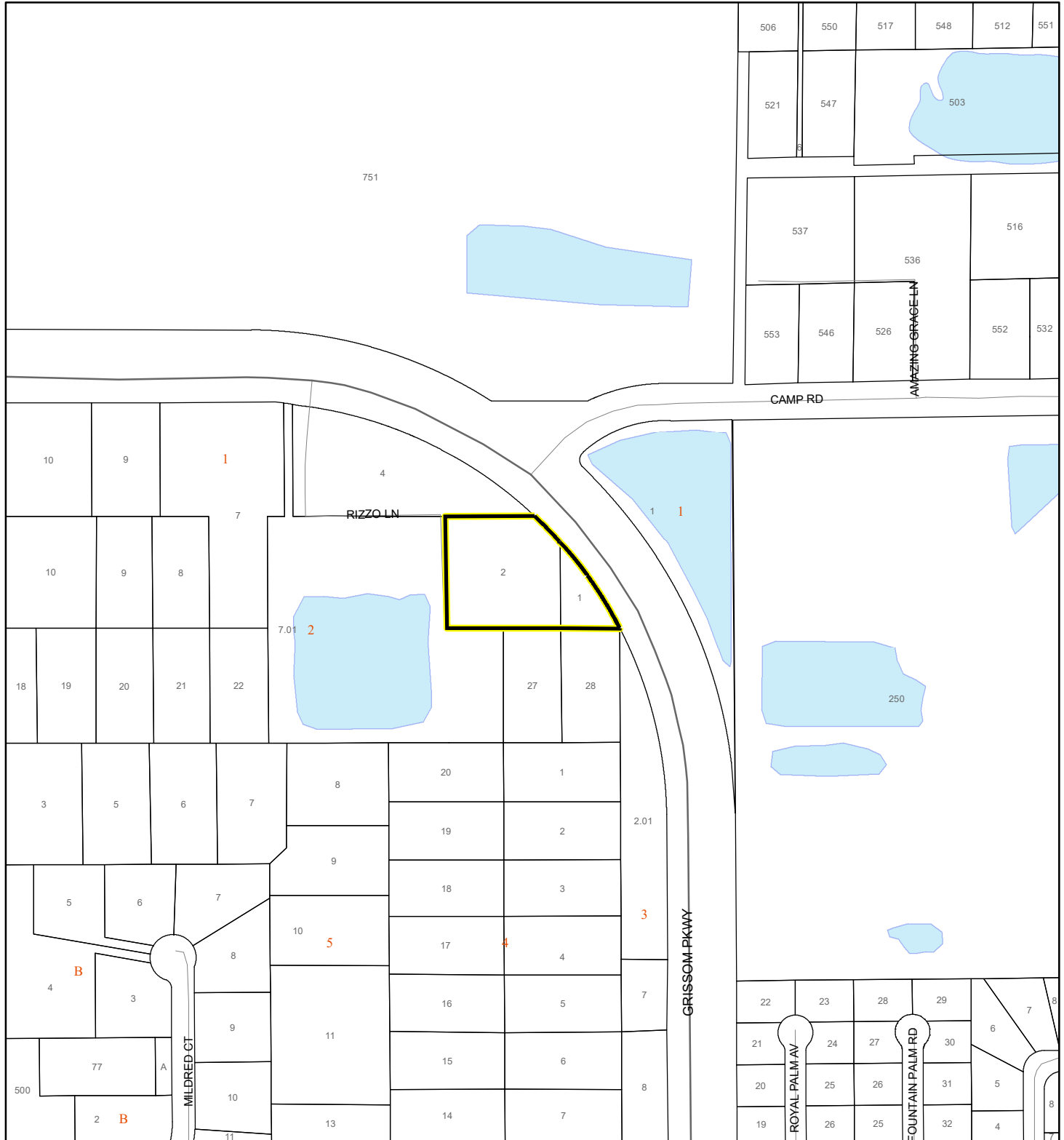
- A
- AE
- AH
- AO
- Open Water
- VE
- X

- Subject Property
- Parcels

COASTAL HIGH HAZARD AREA MAP

FLORIDA DEALER CENTER LLC

23Z00081



1:4,800 or 1 inch = 400 feet

This map was compiled from recorded documents and does not reflect an actual survey. The Brevard County Board of County Commissioners does not assume responsibility for errors or omissions hereon.

Produced by BoCC - GIS Date: 11/8/2023

Subject Property

Parcels

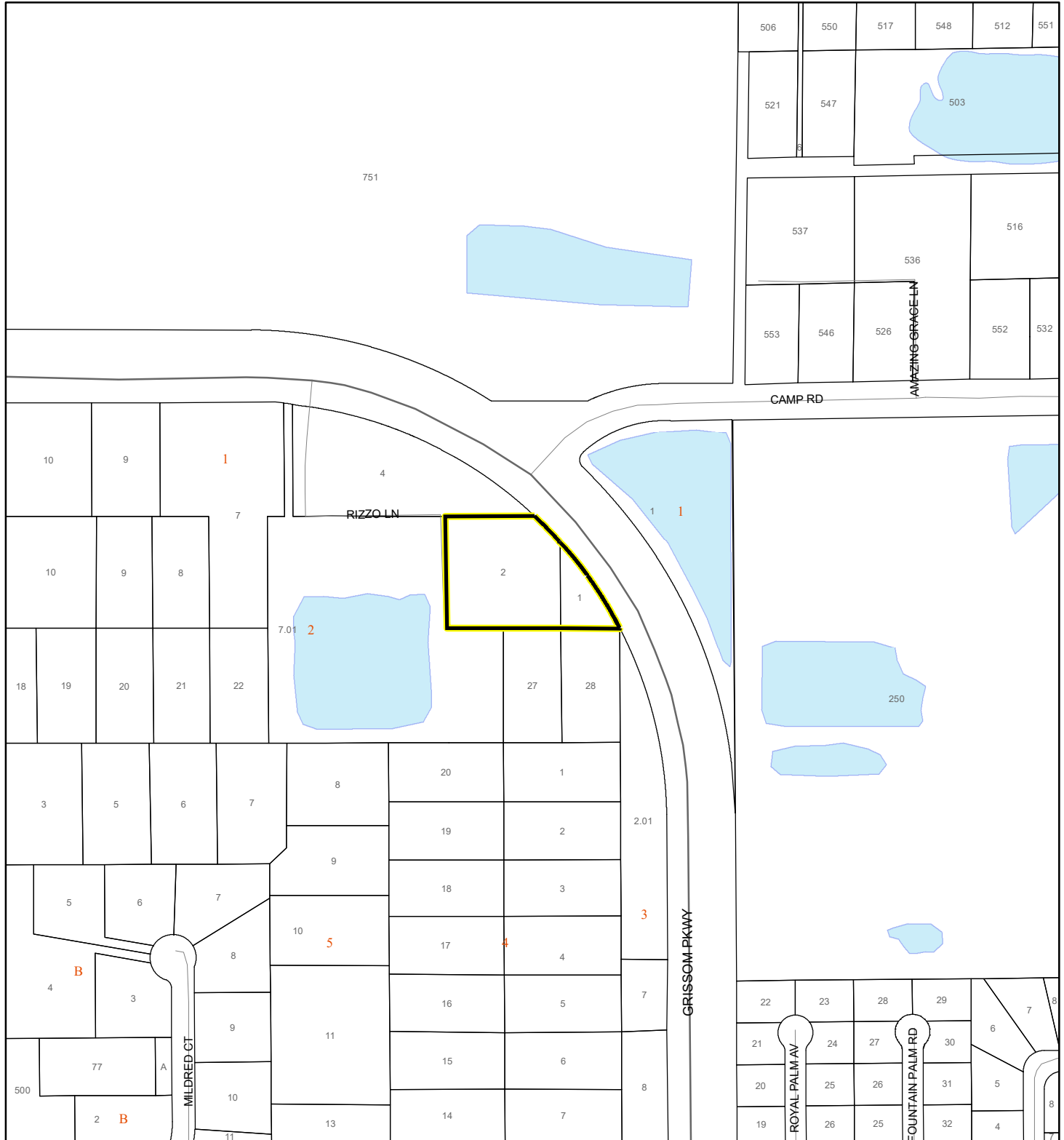
Coastal High Hazard Area

SurgeZoneCat1

INDIAN RIVER LAGOON SEPTIC OVERLAY MAP

FLORIDA DEALER CENTER LLC

23Z00081



1:4,800 or 1 inch = 400 feet

This map was compiled from recorded documents and does not reflect an actual survey. The Brevard County Board of County Commissioners does not assume responsibility for errors or omissions hereon.

Produced by BoCC - GIS Date: 11/8/2023

Subject Property

Parcels

Septic Overlay

40 Meters

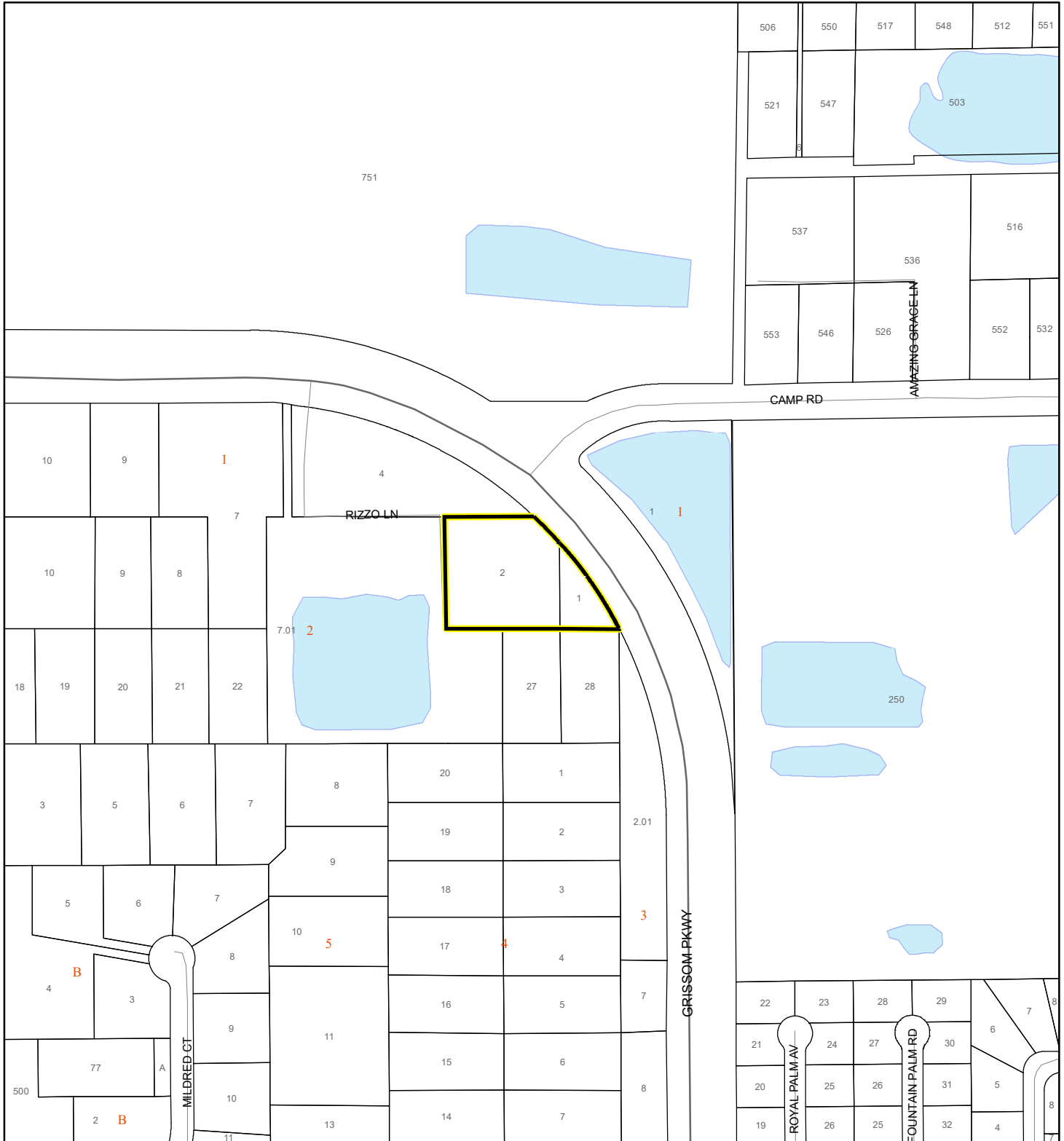
60 Meters

All Distances

EAGLE NESTS MAP

FLORIDA DEALER CENTER LLC

23Z00081



1:4,800 or 1 inch = 400 feet

This map was compiled from recorded documents and does not reflect an actual survey. The Brevard County Board of County Commissioners does not assume responsibility for errors or omissions hereon.

Produced by BoCC - GIS Date: 11/8/2023

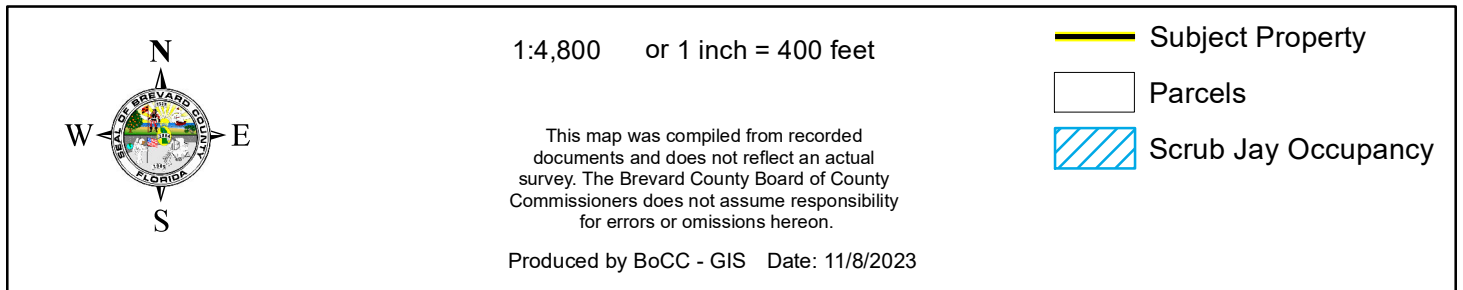
 Subject Property

 Parcels



Eagle Nests
FWS

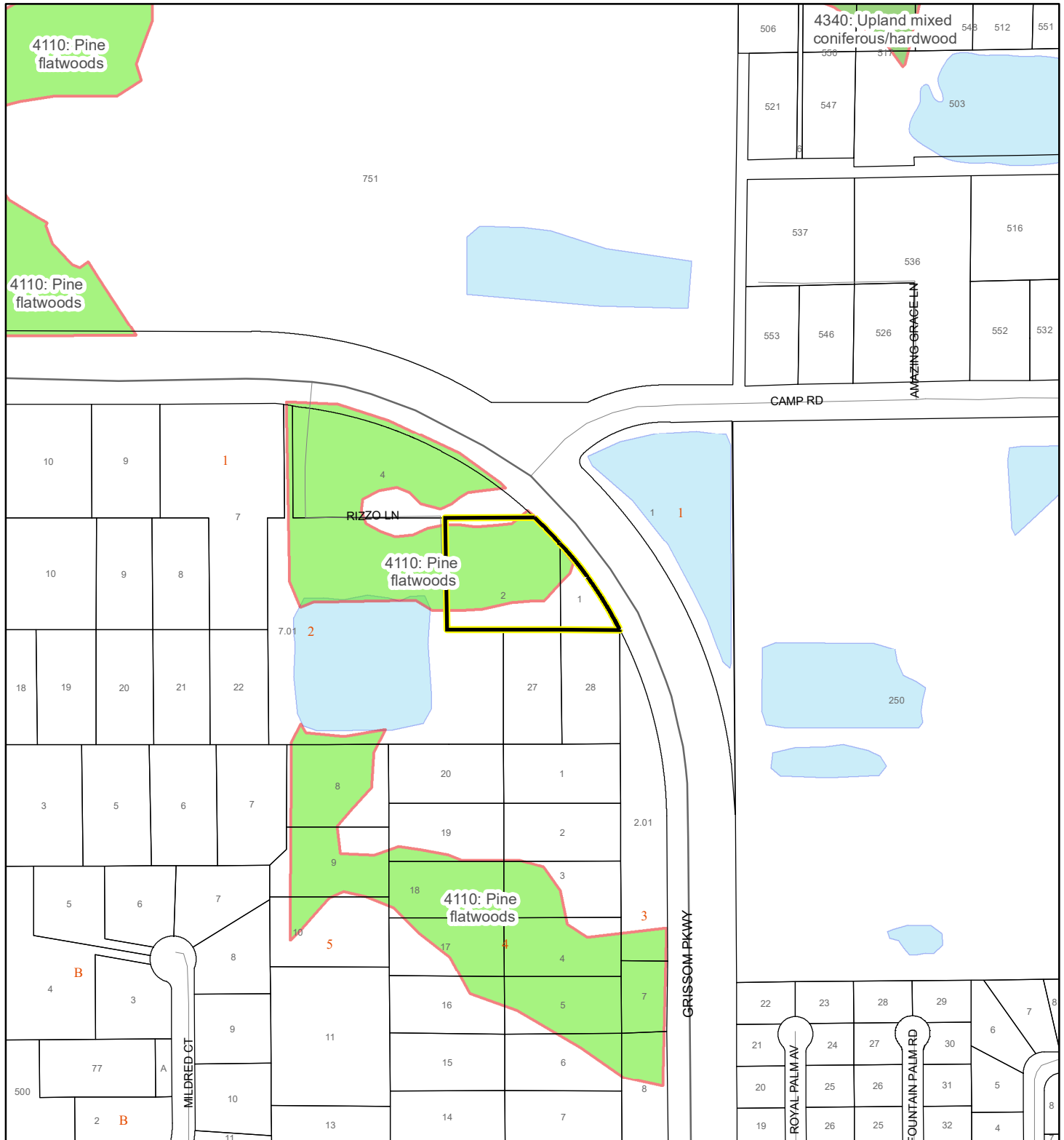
23Z00081



SJRWMD FLUCCS UPLAND FORESTS - 4000 Series MAP

FLORIDA DEALER CENTER LLC

23Z00081



1:4,800 or 1 inch = 400 feet

This map was compiled from recorded documents and does not reflect an actual survey. The Brevard County Board of County Commissioners does not assume responsibility for errors or omissions hereon.

Produced by BoCC - GIS Date: 11/8/2023

SJRWMD FLUCCS Upland Forests

- Upland Coniferous Forest - 4100 Series
- Upland Hardwood Forest - 4200 Series
- Upland Mixed Forest - 4300 Series
- Tree Plantations - 4400 Series

Subject Property Parcels