

# Emergency Management Citizens Academy



March 26, 2026

# Mission

To safeguard and enhance the well-being of our community through collaborative emergency operations, cutting-edge public safety radio systems, and advanced 9-1-1 technologies

# Vision

To meet challenges with innovative solutions, to be at our collective best when things seem their worst, and to ensure our community's preparedness for future generations

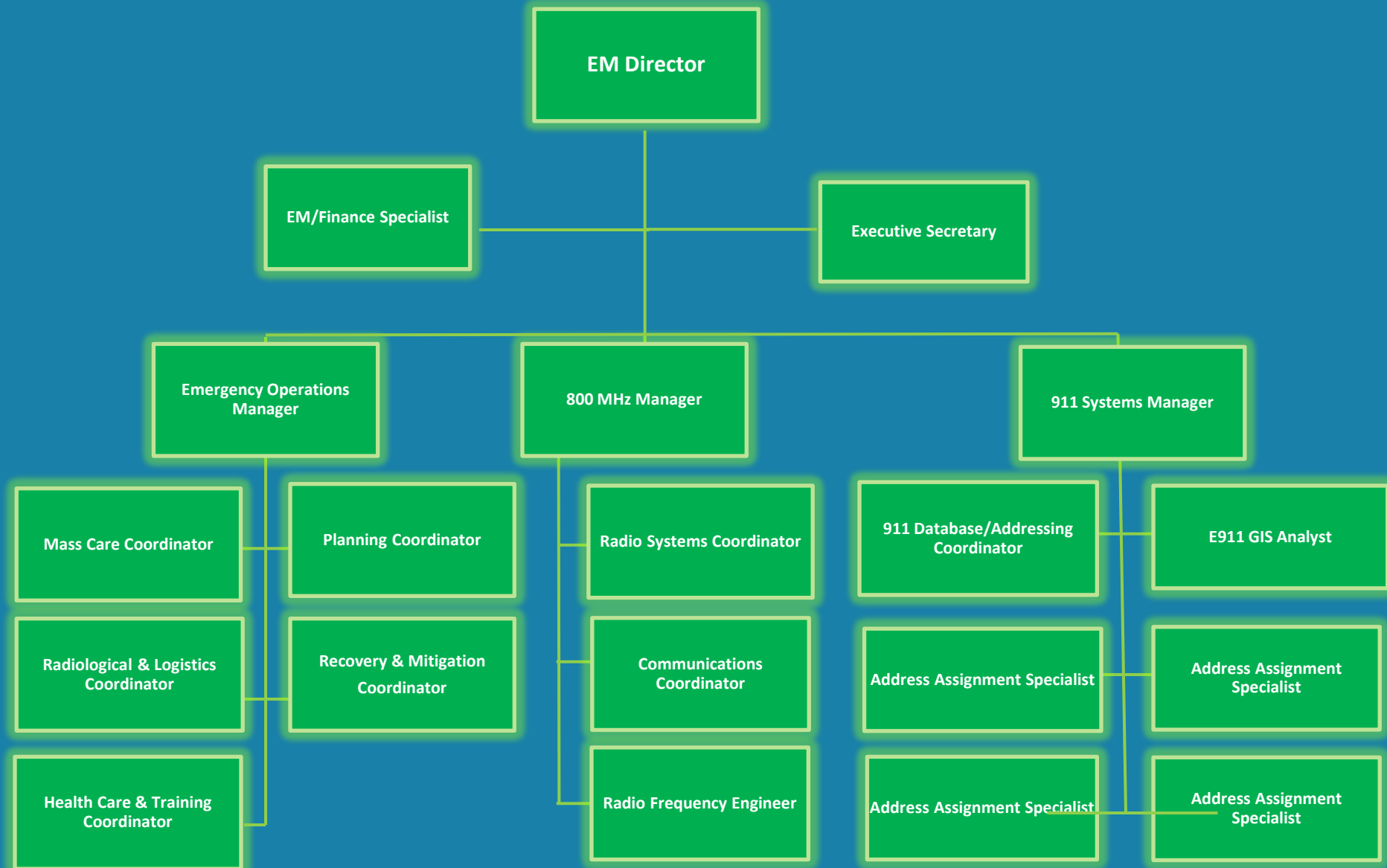
# Core Values

- Equitable
- Collaborative
- Integrity
- Supportive
- Consistent

# Guiding Concepts

- **Build relationships**
  - Most resources needed for a response, we do not own
  - We may not have all the answers, but we know people who do
- **Coordinate information and resources**
  - The core of what we do
  - Ensures standard operating picture – same sheet of music
- **Change outcomes**
  - We get to see the big picture
  - Positioned to see what is and what is not working
  - Utilize the right resource at the right time

# BCEM Organizational Chart



# 800 MHz Radio System

- Used by all public safety agencies
- User agreements & accounts for 56 agencies
- Radio coverage expanded via new towers in Scottsmoor, Indian Harbour Beach, Cocoa Beach
- Obsolete equipment being replaced
- Digital system improving capacity and capability
- Regional interoperability increasing
- Responsible for County tower management/leasing/licensing

# 9-1-1 Systems Administration

- Administration of 9-1-1 systems, technology, and equipment operations countywide
  - Basic, 9-1-1 wireline, 9-1-1 wireless, i3 platform
- Provide Text-to-911 capability
- Appropriate technology for eleven Public Safety Answering Points (PSAPs)
- Ensure E-911 database accuracy
- Training for Public Safety Telecommunicators
- GIS & electronic mapping to PSAPs for accurate dispatching
- Assign addresses for new development or redevelopment: streets, subdivisions, etc.
- Ensure streets/addresses are not duplicated

# Emergency Management Operations

- Focused on all-hazards readiness and community preparedness
- Brevard's Unique Hazards
  - 32 federal disaster declarations in the past 55 years, ranking it in the top 3% in the US
  - Tornado activity is 2 times the state average and 3.9 times above US average
  - Parts of Brevard are within the 50-mile St. Lucie Nuclear Power Plant ingestion pathway
  - Port Canaveral is the world's busiest passenger cruise port, with over 4 million cruise passengers





**1,534**

**Outreach Participants**



**136**

**EOC Activations**



**107**

**Launches**



**1**

**North Brevard  
Flooding**



**2**

**Wildfires  
Micco, Palm Bay**

# **Brevard County Emergency Management 2025 in Review**



**1,036**

**Social Media  
Posts**



**2**

**Exercises**



**24**

**EOC Training  
Courses**



**573**

**AlertBrevard  
Notifications**



**\$4.1M**

**Flooding  
Assistance**



**29**

**Days Under  
45 Degrees**



# OCTOBER 26 NORTH BREVARD FLOODING EVENT

*By the #1's*  
November 17, 2025

Record Rainfall

EOC Days Activated  
**12**

Situation Reports  
**4**

Homes Affected  
**179**

Major Damage  
**15**

Port St. John  
**15.5 INCHES**

Titusville  
**14.6 INCHES**

911 Calls for Flooding  
**560**

Community Reports  
**6**

Minor Damage  
**276**

Homes Destroyed  
**0**

Pumps Deployed  
**22**

211 Brevard Calls  
**64**

Social Media Posts  
**218**

Resident Self-Report  
**370**

SBA Days of Operation  
**17**

Gallons of Water Moved  
**40.7 MILLION**

Volunteer Portal Requests  
**61**

Assessment Teams  
**6**

Damage Assessment Teams Miles  
**1,200**

DLOC Visitors  
**47**

Clean-Up Kits Distributed  
**171**

Volunteer Hours  
**2,106**

Total Volunteers  
**200**

Homeowner Assistance  
**\$1.35M**

Business Assistance  
**\$850,000**

# An All-Hazards Approach

- While hazards and threats vary, the consequences remain largely the same
  - Difference is scale
- The same principle applies to response agencies
  - Difference is type of support
- “All-Hazards Approach” allows us to:
  - Simplify response operations
  - Maximize efficiency
  - Create operational stability

- Emergency Response Plans
- Training and Exercises
- Community Outreach

- Life Saving
- Incident Stabilization
- Property Preservation
- Evacuation & Mass Care



- Public Education
- Hazard Assessments
- Infrastructure Improvements

- Economic Recovery
- Debris Management
- Housing
- Health/Social Services

# EOC Structure, Fun Facts & Myths





CITY OF  
**CAPE  
CANAVERAL**



**COCOA**  
FLORIDA



*Melbourne Beach*  
FLORIDA



Town of  
*Indialantic*  
Florida



*Town of*  
**Palm Shores**  
*Florida*



# Disaster Response is a TEAM Sport



Town of  
**MALABAR**  
*Florida*

*Indian Harbour Beach*  
Florida



**Satellite Beach**  
*Florida*

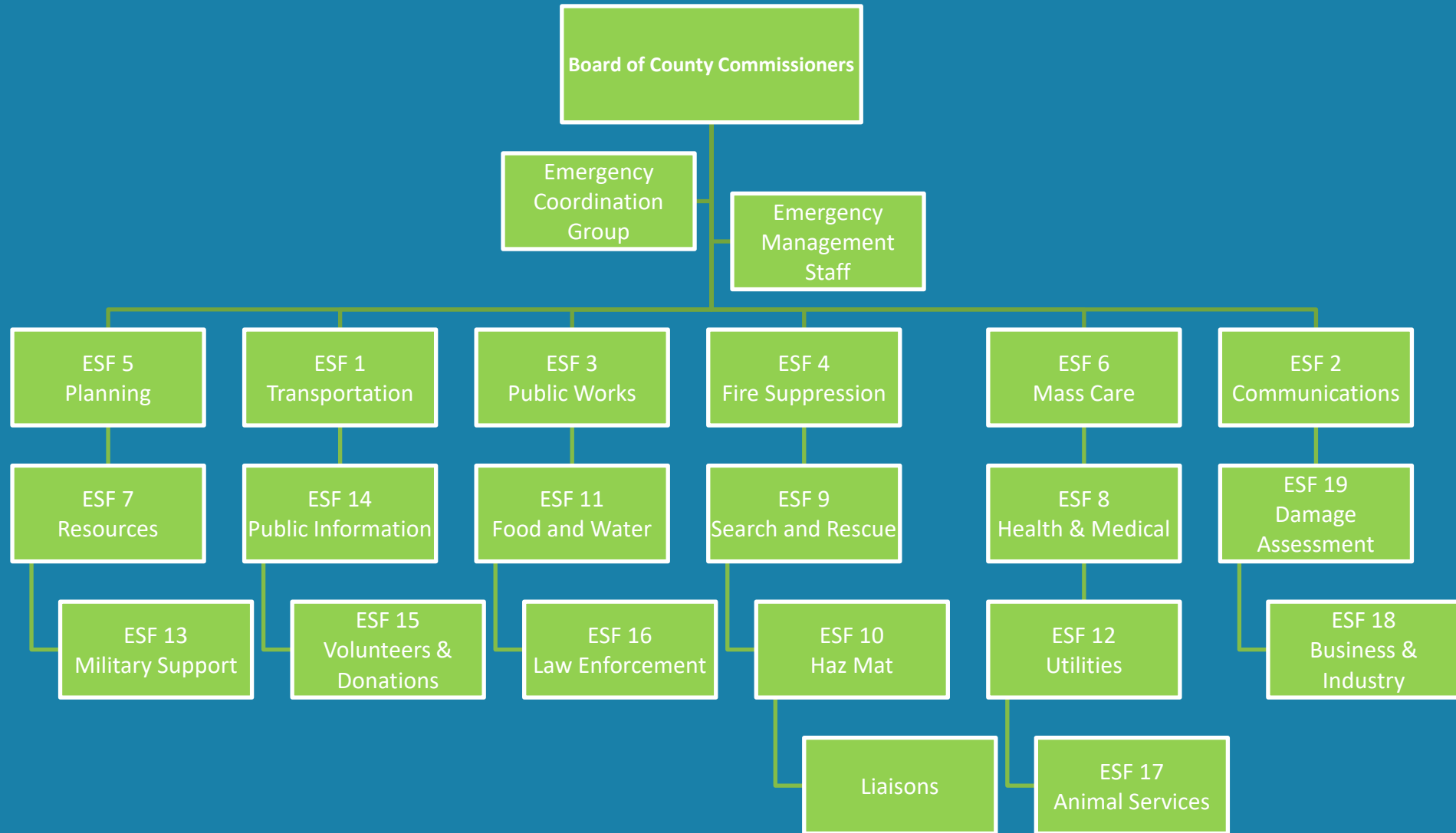
*Titusville*  
FLORIDA



The City of  
**Palm Bay**  
Florida

**West Melbourne**  
FLORIDA

# Brevard County EOC Structure



# Emergency Coordination Group

## Purpose

To ensure key jurisdictional or agency decisions are:

- ❖ Developed in complement with one another
- ❖ Implemented in coordination
- ❖ Unified messaging to the public

## Protective Action Examples

- Evacuations
- Sheltering
- Government Closures
- School Closures
- Critical Infrastructure Issues

## Members

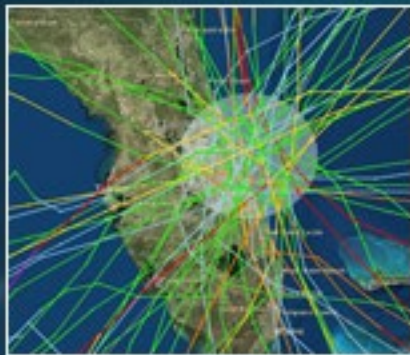
- Chairperson of Brevard County BoCC
- Brevard County Manager
- Brevard County EM Director
- Brevard County Fire Chief
- Brevard County Attorney
- Brevard County Sheriff
- Superintendent of Schools
- Health Department Administrator
- Public Safety Director
- Designated Municipal Representative

# Brevard's Hurricane Problem



**M  
Y  
T  
H**

**“BREVARD COUNTY DOESN'T GET HURRICANES; THAT'S WHY THEY PUT THE KENNEDY SPACE CENTER HERE...”**



**40 TROPICAL STORMS AND HURRICANES HAVE PASSED WITHIN 50 MILES OF CAPE CANAVERAL SINCE 1850. REMEMBER, HURRICANES ARE *NOT* SINGLE POINTS!**

**T  
R  
U  
T  
H**

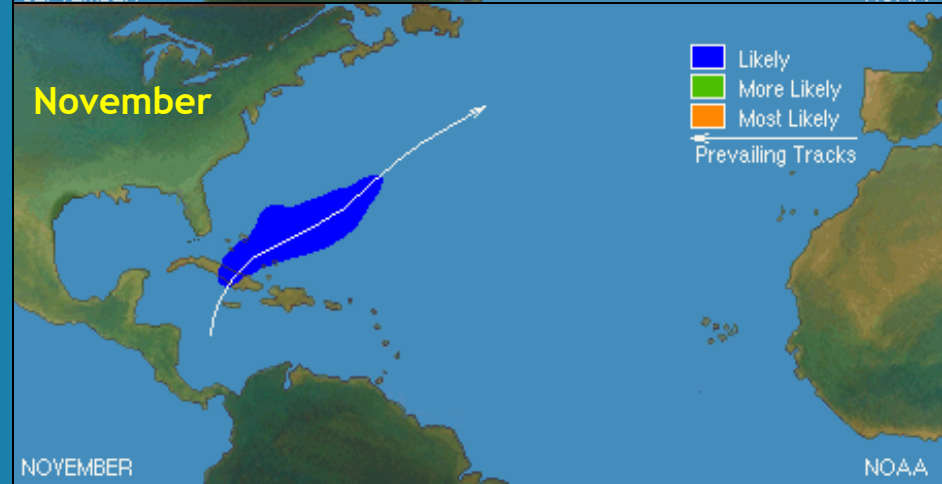
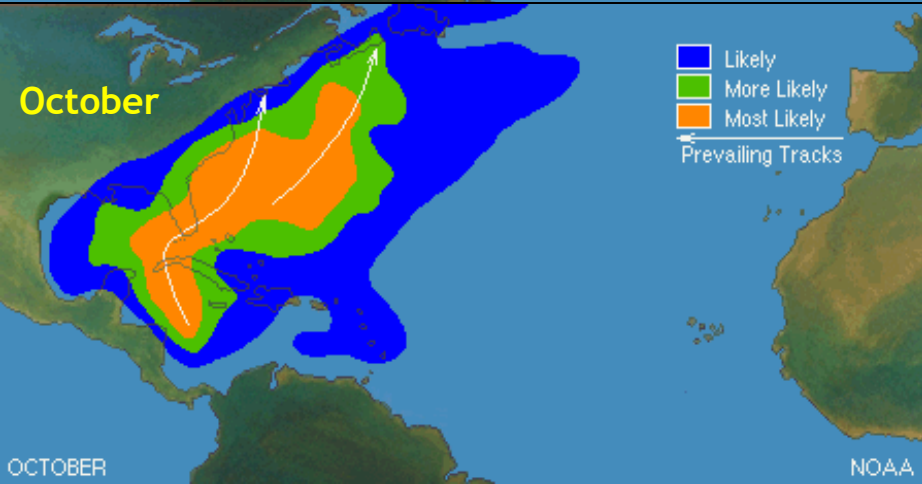
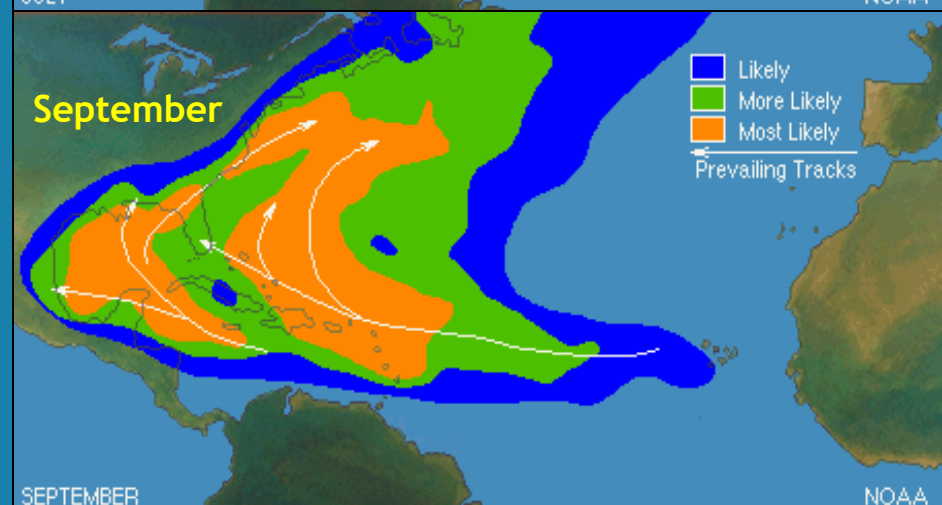
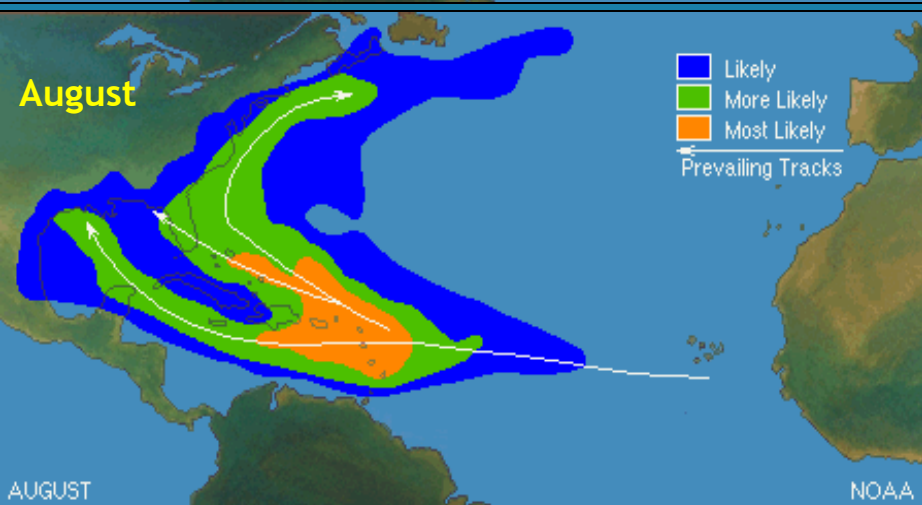
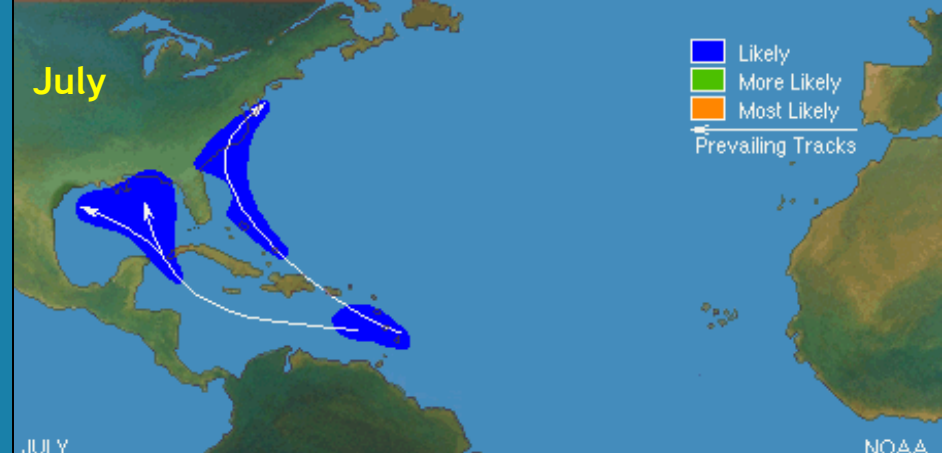
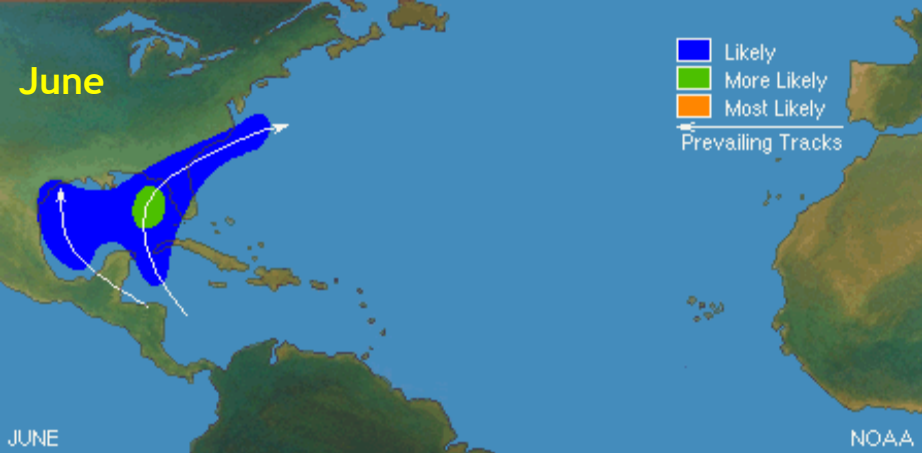


[WWW.WEATHER.GOV/MELBOURNE](http://WWW.WEATHER.GOV/MELBOURNE)  
[WWW.EMBREVARD.COM](http://WWW.EMBREVARD.COM)



**2015 data – now 47**





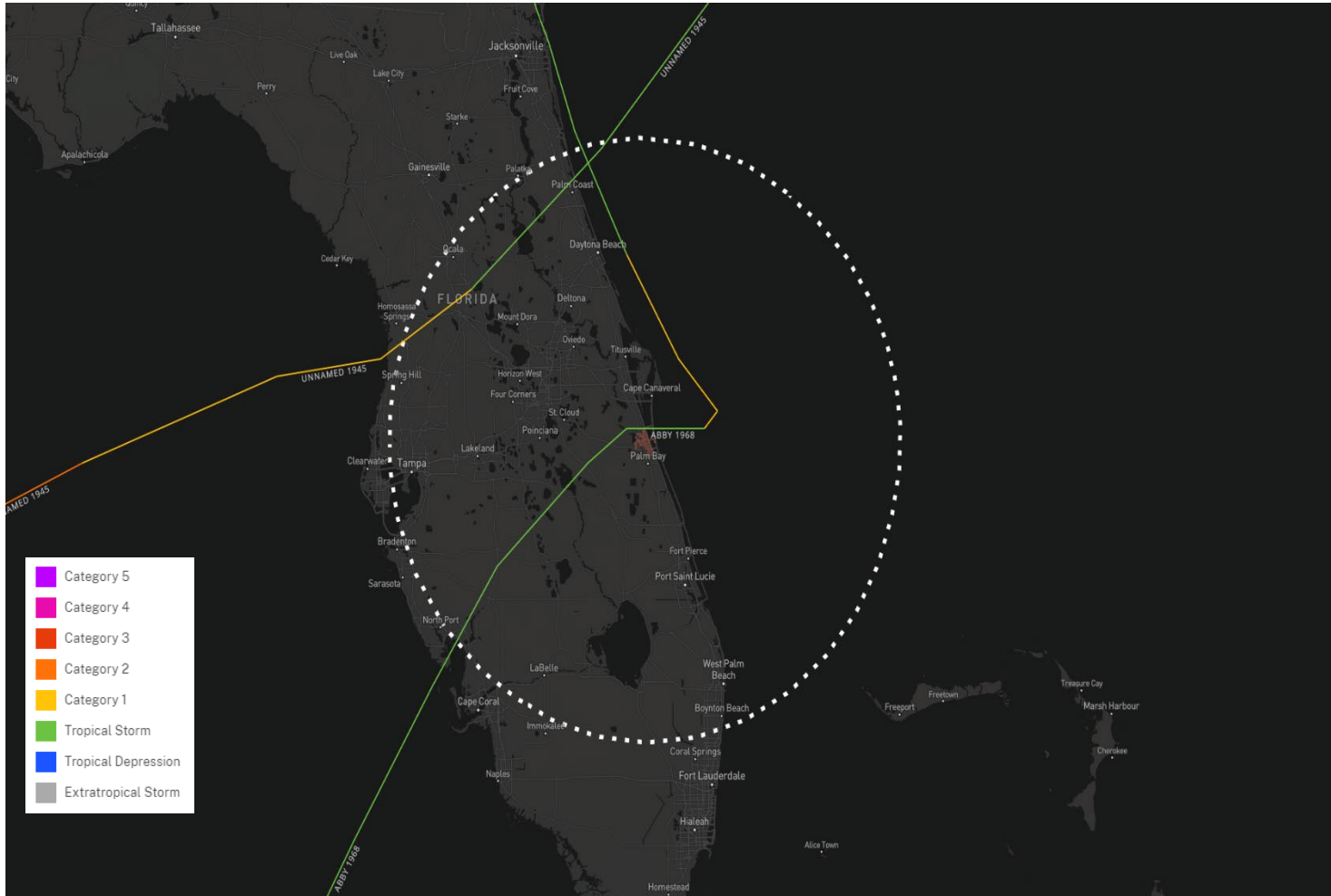
# Tropical Cyclones 101

## June Hurricanes (1851-2023)



WEATHER FORECAST OFFICE

Melbourne  Florida



within **100 nm** of  
**Melbourne**

**2** Hurricanes

**8** Tropical Storms

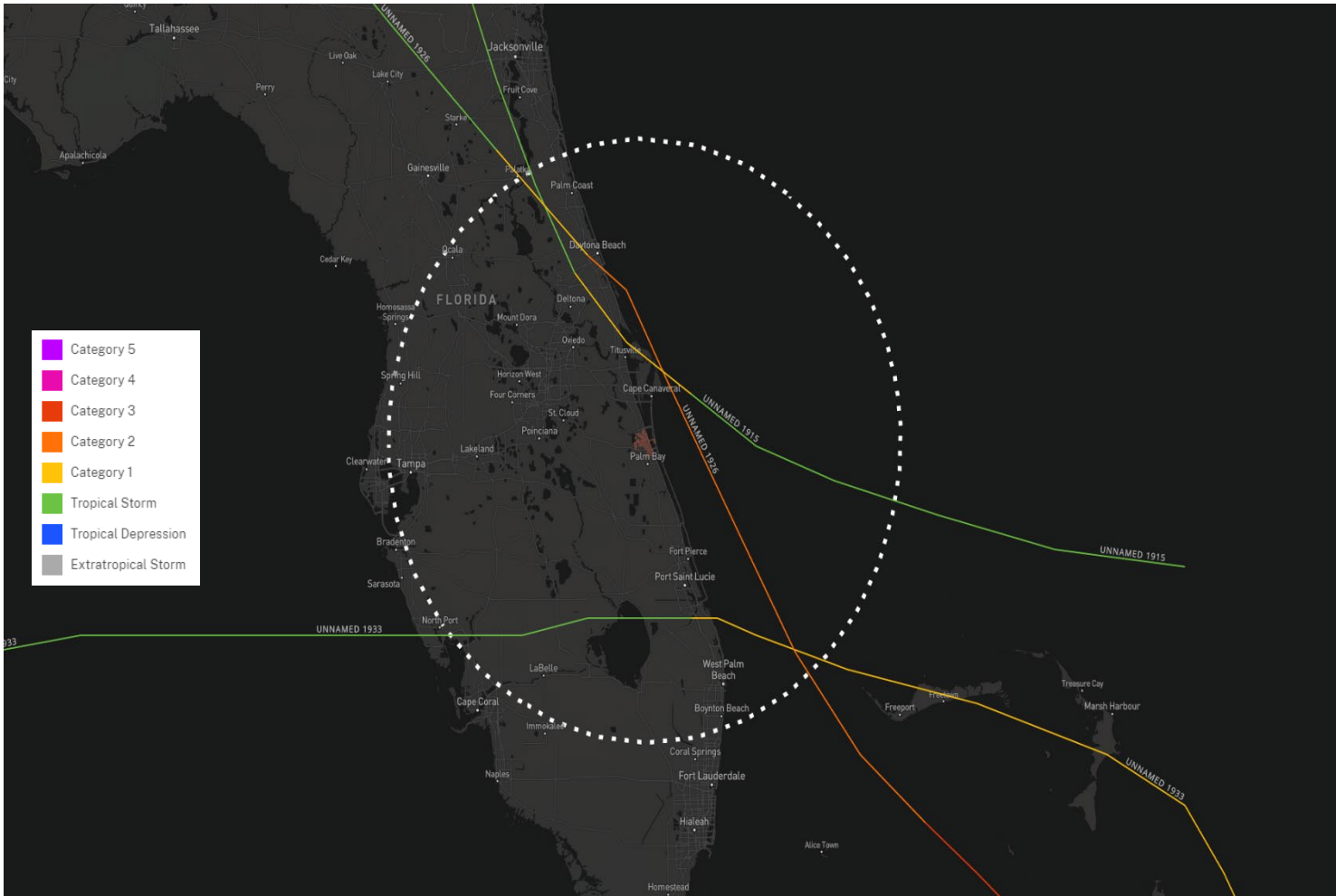
# Tropical Cyclones 101

## July Hurricanes (1851-2023)



WEATHER FORECAST OFFICE

Melbourne  Florida



within **100 nm** of  
**Melbourne**

**3** Hurricanes

**6** Tropical Storms

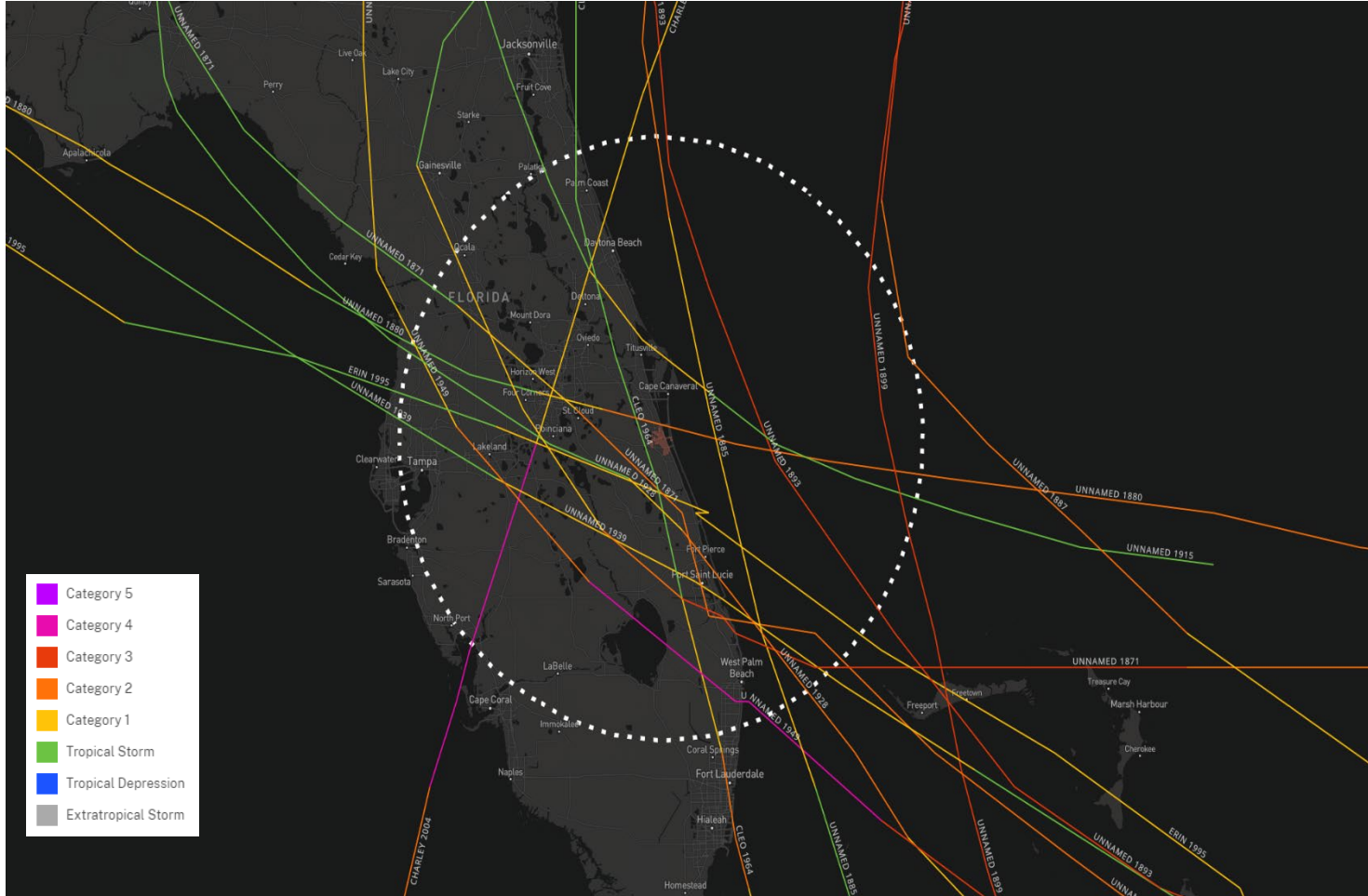
# Tropical Cyclones 101

## August Hurricanes (1851-2023)



WEATHER FORECAST OFFICE

Melbourne  Florida



within 100 nm of  
Melbourne

14 Hurricanes

17 Tropical Storms



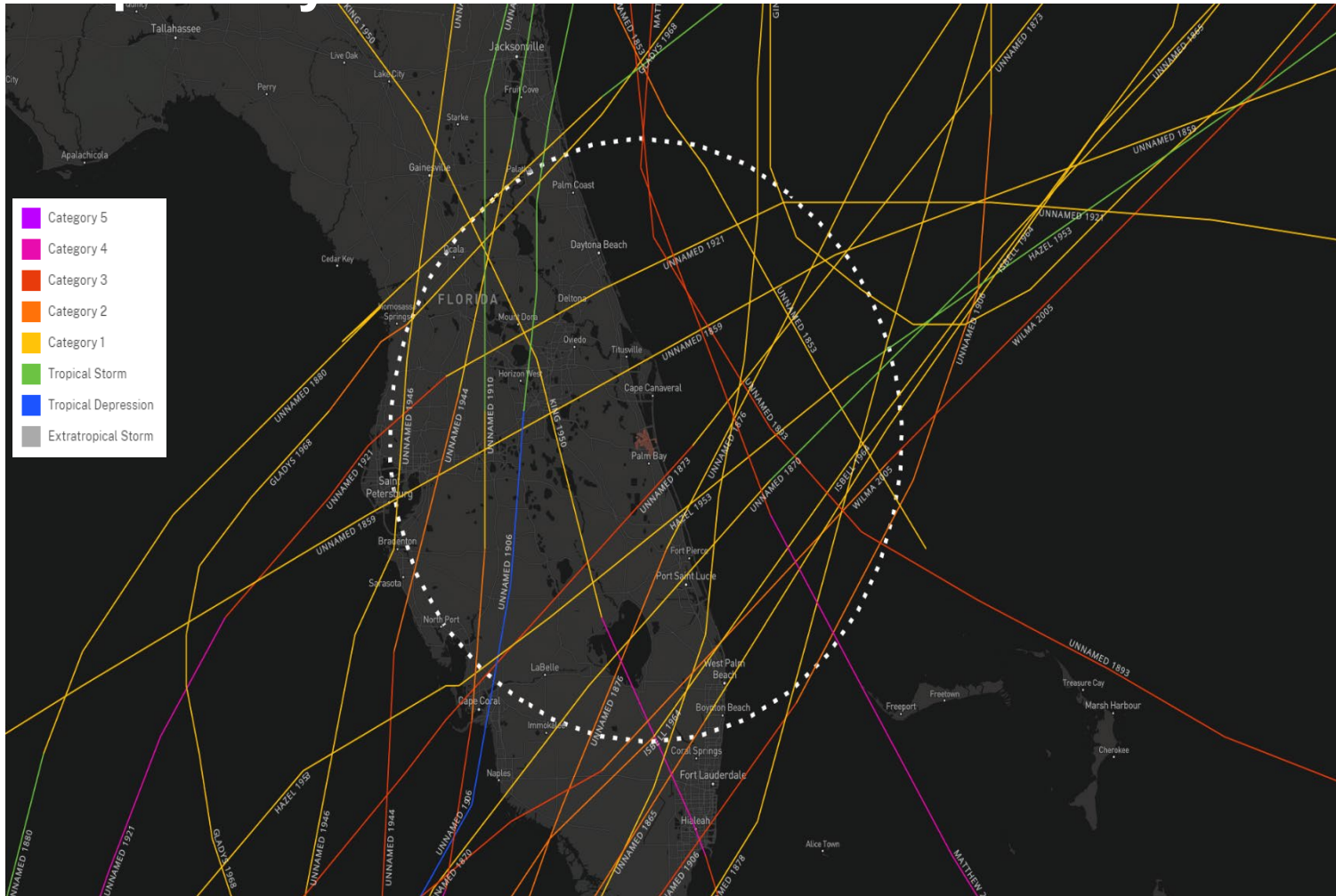
# Tropical Cyclones 101

## October Hurricanes (1851-2023)



WEATHER FORECAST OFFICE

Melbourne  Florida



within 100 nm of  
Melbourne

**22** Hurricanes  
**21** Tropical Storms

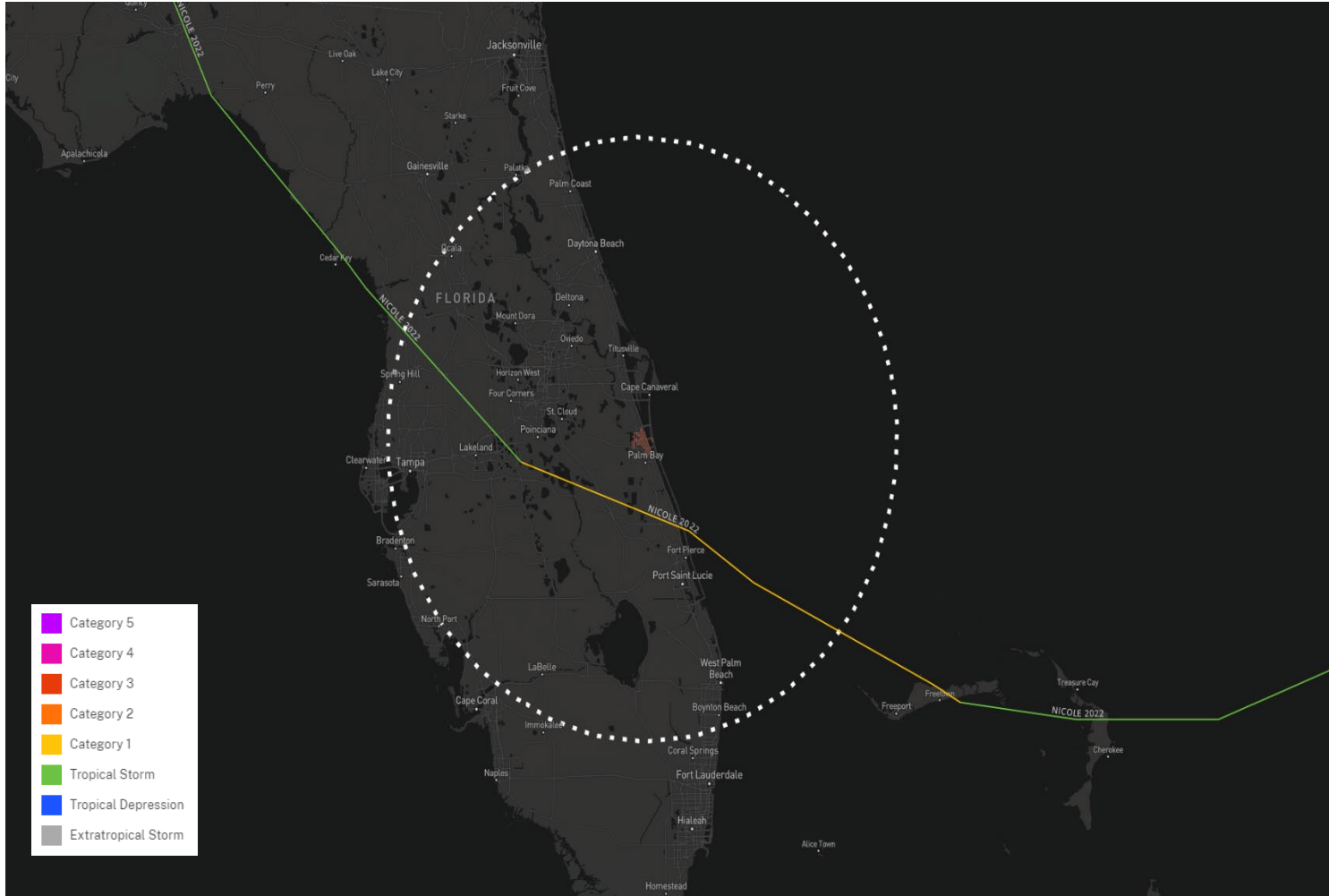
# Tropical Cyclones 101

## November Hurricanes (1851-2023)



WEATHER FORECAST OFFICE

Melbourne  Florida



within **100 nm** of  
**Melbourne**

**1** Hurricanes  
**5** Tropical Storms

**M  
Y  
T  
H**

**“IF WE LIVE IN AN AREA OUTSIDE THE  
“CONE OF UNCERTAINTY,” WE DON’T  
HAVE TO WORRY; WE’RE SAFE...”**



- THE CONE CONTAINS THE MOST PROBABLE PATH OF THE CENTER OF THE STORM**
- HAZARDOUS CONDITIONS CAN OCCUR WELL OUTSIDE OF THE CONE DUE TO THE SIZE OF THE STORM**

**T  
R  
U  
T  
H**



[WWW.WEATHER.GOV/MELBOURNE](http://WWW.WEATHER.GOV/MELBOURNE)  
[WWW.EMBREVARD.COM](http://WWW.EMBREVARD.COM)



**Cone contains the center of the storm 67% of the time.**

**M  
Y  
T  
H**

# “CAUSEWAYS ARE CLOSED BEFORE STORMS...”



- EMERGENCY SERVICES STOP USING CAUSEWAYS WHEN SUSTAINED WINDS ARE 40+ MPH
- NO LONGER SAFE FOR HIGH PROFILE VEHICLE TRAFFIC (FIRE TRUCKS, AMBULANCES, ETC).
- TOO DANGEROUS TO KEEP A LAW ENFORCEMENT PRESENCE ON SITE

**T  
R  
U  
T  
H**



**Melbourne**  
WEATHER FORECAST OFFICE

[WWW.WEATHER.GOV/MELBOURNE](http://WWW.WEATHER.GOV/MELBOURNE)  
[WWW.EMBREVARD.COM](http://WWW.EMBREVARD.COM)



**Causeways are closed after the storm until checked for safety.**

**M  
Y  
T  
H**

**“THE WINDS OF A HURRICANE ARE WHY PEOPLE SHOULD EVACUATE...”**



- STORM SURGE IS THE GREATEST THREAT TO LIFE AND PROPERTY**
- STORM SURGE = THE ABNORMAL RISE IN WATER LEVEL CAUSED BY WIND & PRESSURE FORCES OF A HURRICANE**
- CAN GO SIGNIFICANT DISTANCES INLAND**

**T  
R  
U  
T  
H**



**Melbourne**  
WEATHER FORECAST OFFICE

[WWW.WEATHER.GOV/MELBOURNE](http://WWW.WEATHER.GOV/MELBOURNE)  
[WWW.EMBREVARD.COM](http://WWW.EMBREVARD.COM)



**Run from the Water and Hide from the Wind.**

# Storm Surge Threat in Brevard

## Atlantic vs Gulf

- Steep vs shallow continental shelf
- High vs low dune line
- Mostly along the coast vs miles inland
- High surge potential vs catastrophic surge potential

## Primary areas of concern

- Barrier islands – both sides
- Indian and Banana Rivers
  - including their canals and tributaries
- Causeway approaches

**M  
Y  
T  
H**

**“IF I EVACUATE, I HAVE TO LEAVE  
BREVARD COUNTY AND GO TO  
ORLANDO OR GEORGIA...”**



- “RUN FROM THE WATER & HIDE FROM THE WIND.”
- GO WEST, OUT OF STORM SURGE ZONES
- FIND A STRONG STRUCTURE (BETTER BUILDING CODES SINCE 1992)
- PLACES TO CONSIDER INCLUDE FAMILY, FRIENDS, NEWER HOTELS, AND SHELTERS

**T  
R  
U  
T  
H**



[WWW.WEATHER.GOV/MELBOURNE](http://WWW.WEATHER.GOV/MELBOURNE)  
[WWW.EMBREVARD.COM](http://WWW.EMBREVARD.COM)



**Go tens of miles, not hundreds of miles. Public shelters are located in safe areas.**

# Don't want to evacuate?

You can stay if:

- You don't live in a storm surge zone or flood prone area
- You don't live in a city that has beach or island in the name
- You don't live in a mobile or manufactured home
- You live in a home that has protection for the windows and doors
- Your health doesn't depend on having access to reliable power and water

If you did not check a box,  
you are at risk and need to evacuate

M  
Y  
T  
H

“SHELTERS WILL HAVE EVERYTHING,  
SO I DON'T NEED TO BRING  
ANYTHING...”



- SHELTERS ARE A LIFE BOAT, NOT A CRUISE SHIP!
- THEY ARE INTENDED TO BE A LAST RESORT, FOCUSED ON KEEPING YOU ALIVE, AND PROVIDE ONLY THE BASICS!
- BE PREPARED** AND HAVE YOUR BEDDING, SPECIAL DIETARY ITEMS, ENTERTAINMENT, AND DISASTER SUPPLY KIT WITH YOU!

T  
R  
U  
T  
H



[WWW.WEATHER.GOV/MELBOURNE](http://WWW.WEATHER.GOV/MELBOURNE)  
[WWW.EMBREVARD.COM](http://WWW.EMBREVARD.COM)



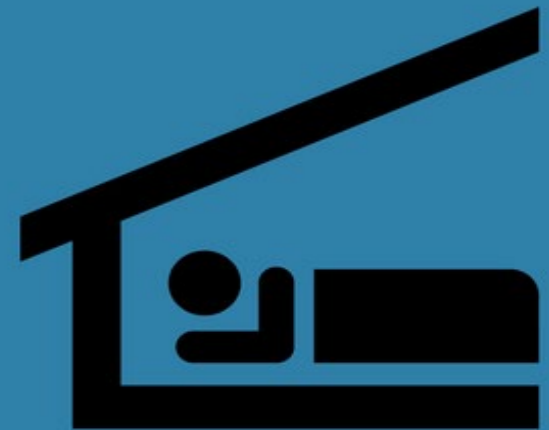
Public shelters are available for those without options; you aren't required to go.

# WHEN ARE SHELTERS ANNOUNCED?



#PathwaysToPreparedness

- As a result of lessons learned from Hurricane Matthew, we no longer list evacuation shelters on our website.
- Shelter openings are incident-specific, based on the threat expected.
- We announce shelter locations at least 24 hours in advance of tropical effects, on the day that they are being opened, or the day before, to:
  - 2-1-1, which the public can call at any time for information
  - The news media
  - The public via our website, Facebook and Twitter
- This will include information about which shelters are pet-friendly.



[www.embrevard.com](http://www.embrevard.com)

# DELAYS IN SERVICE

- Be aware that emergency responses could be delayed due to storm conditions, damaged or blocked roadways, or available resources.



# DON'T RUSH BACK

- After Irma, almost all of Brevard County's traffic signals were damaged, in some way and/or without power.
- Thousands of residents were also without power and experienced several days of a loss of water pressure.



#PathwaysToPreparedness

# PREPARE FOR LOSS OF POWER

- Be prepared to lose power for several days.
- Don't stock up on perishable food items when a storm is approaching.
- We recommend flashlights and camping lanterns as light sources; avoid using open flames.
- For FPL's tips on how to prepare, and to report outages:
  - Visit [FPL.com/Storm](https://www.fpl.com/Storm)
  - The FPL Mobile App is available in the iOS App and Google Play stores.



#PathwaysToPreparedness

# PREPARE FOR LOSS OF WATER

- All residents need to be prepared for potential loss of water service and for Precautionary Boil Water Notices once service is restored.
- Prepare by:
  - Fill gallon jugs and other containers with water for washing dishes or flushing, and purchase bottled water for drinking, before a storm. This will prepare you for the possibility of water loss due to water main breaks.
  - We do not recommend filling your bathtub with water, as you may need to take shelter in the tub in the case of a tornado. (During a tornado warning, go to an interior room of your home, without windows, cover yourself, and protect your head.)



#PathwaysToPreparedness

# LIVE IN A FLOOD ZONE?

- Every Florida property can flood, even those outside FEMA-classified “Special Flood Hazard Area.”
- Purchase flood insurance. Regular homeowner’s insurance does not cover flooding, and may not cover wind-driven rain.
- Flooding can occur from heavy rainfall, or from rising waters of the Indian River, Banana River, St. John’s River, Mosquito Lagoon, Sykes Creek or Newfound Harbor.



# IS MY INSURANCE ENOUGH?

- Review your property insurance and check whether it pays replacement costs, or actual cash value for a covered loss.
- Inventory your household items, and photograph or videotape them for further documentation. Keep this information and your insurance policies in a safe place.
- Remember that flood damage is not covered by a standard homeowners policy, and there is a 30-day waiting period before flood insurance goes into effect.
- Keep the name, address and claims-reporting telephone number of your insurance agent in a safe and easily accessible place.



#PathwaysToPreparedness

# Pathways to Preparedness

Help us build a culture of preparedness in Brevard!



**Know Your Risks**



**Build a Kit**



**Make a Plan**



**Stay Informed**



**Get Involved**



*Thank you for your time!*

## Text Alerts

To receive text message updates on your cell phone, text BrevardEOC to 888777 (normal text messaging rates apply).



## Social Media

Follow @BrevardEOC on Twitter.



Like "Brevard County Emergency Management" on Facebook.

