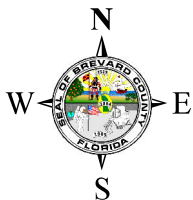
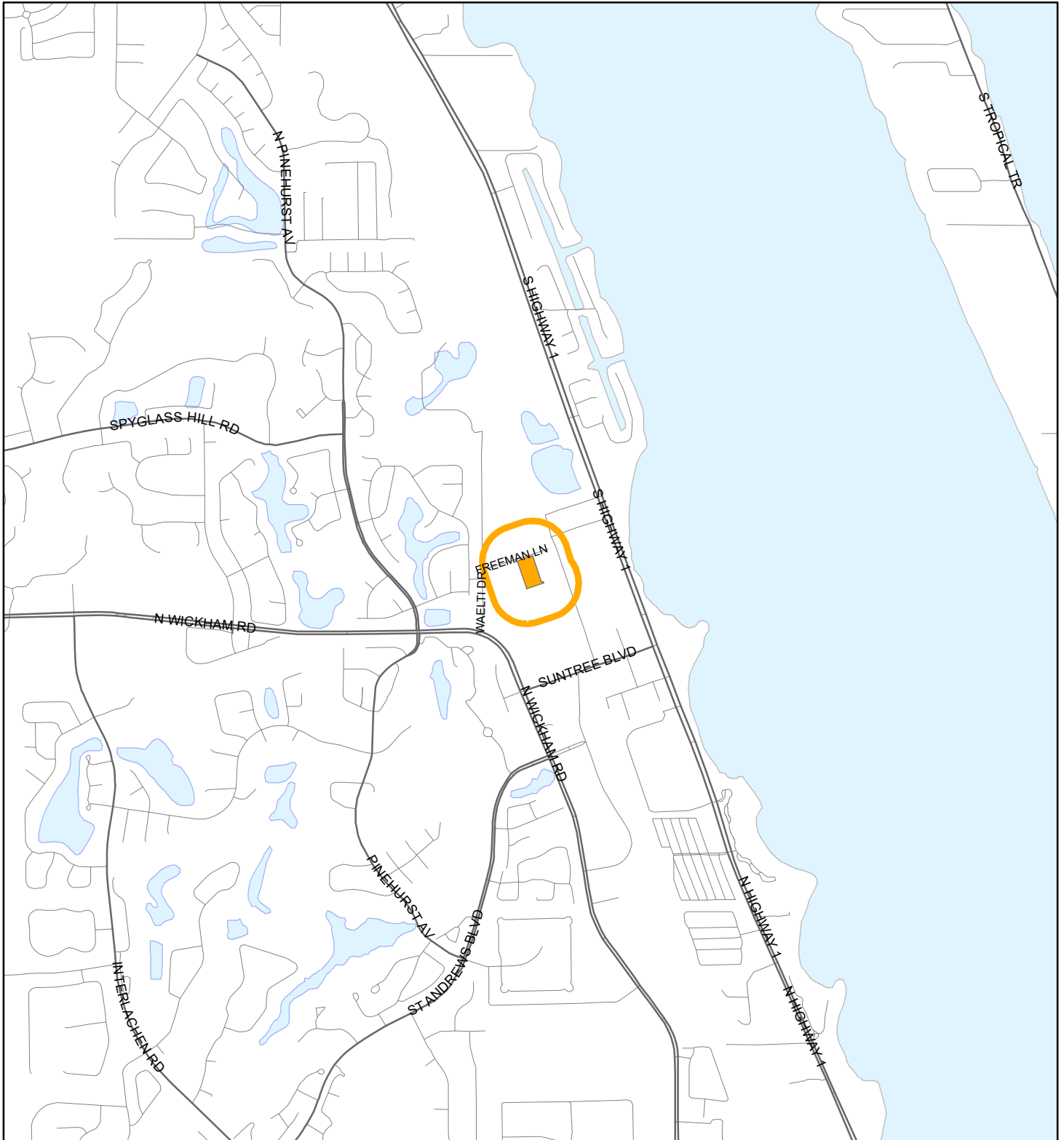


LOCATION MAP

RANGER STORAGE LLC

23Z00009





1:24,000 or 1 inch = 2,000 feet

Buffer Distance: 500 feet

This map was compiled from recorded documents and does not reflect an actual survey. The Brevard County Board of County Commissioners does not assume responsibility for errors or omissions hereon.

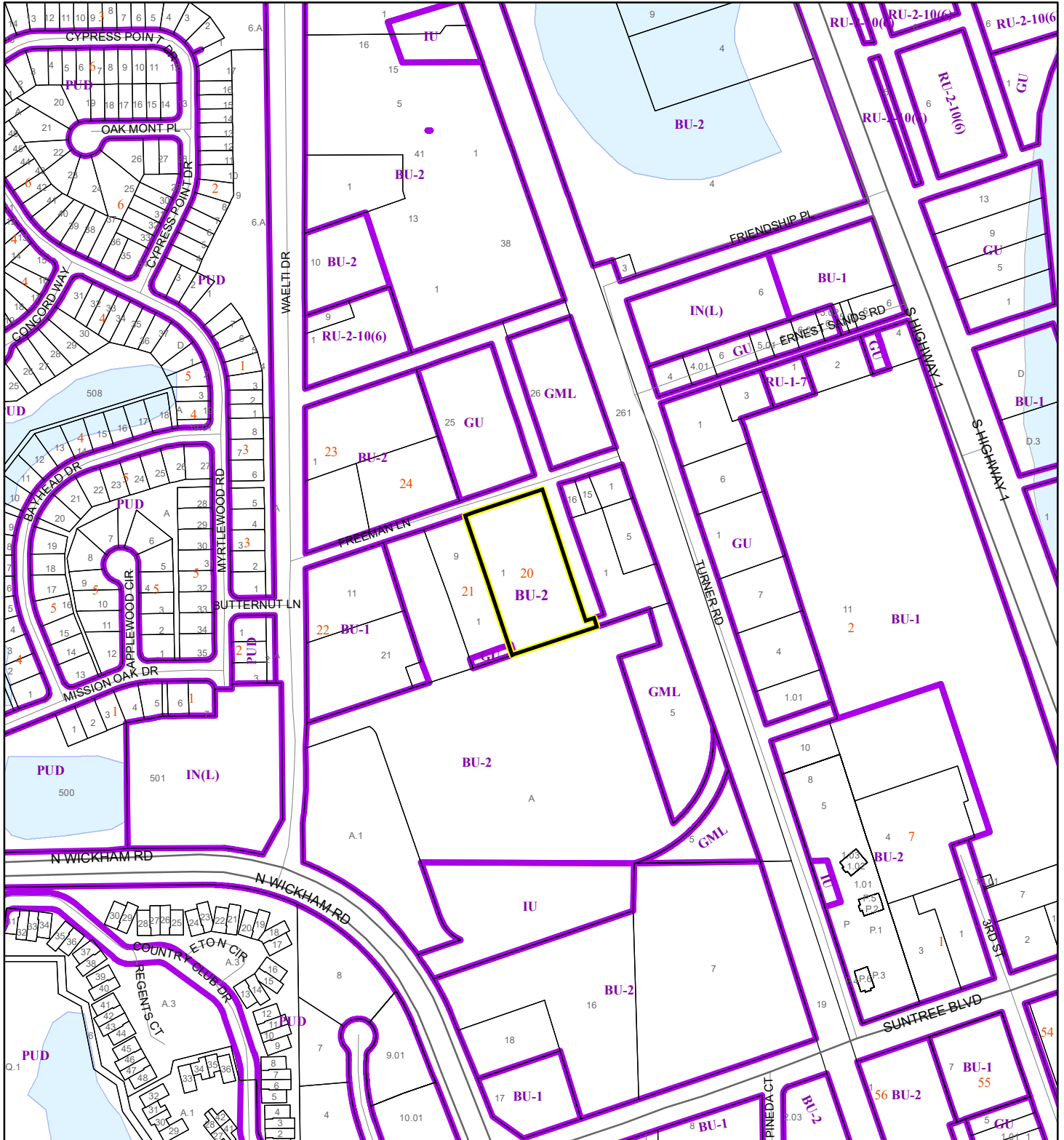
Produced by BoCC - GIS Date: 2/7/2023

-  Buffer
-  Subject Property

ZONING MAP

RANGER STORAGE LLC




23Z00009



1:4,800 or 1 inch = 400 feet

This map was compiled from recorded documents and does not reflect an actual survey. The Brevard County Board of County Commissioners does not assume responsibility for errors or omissions hereon.

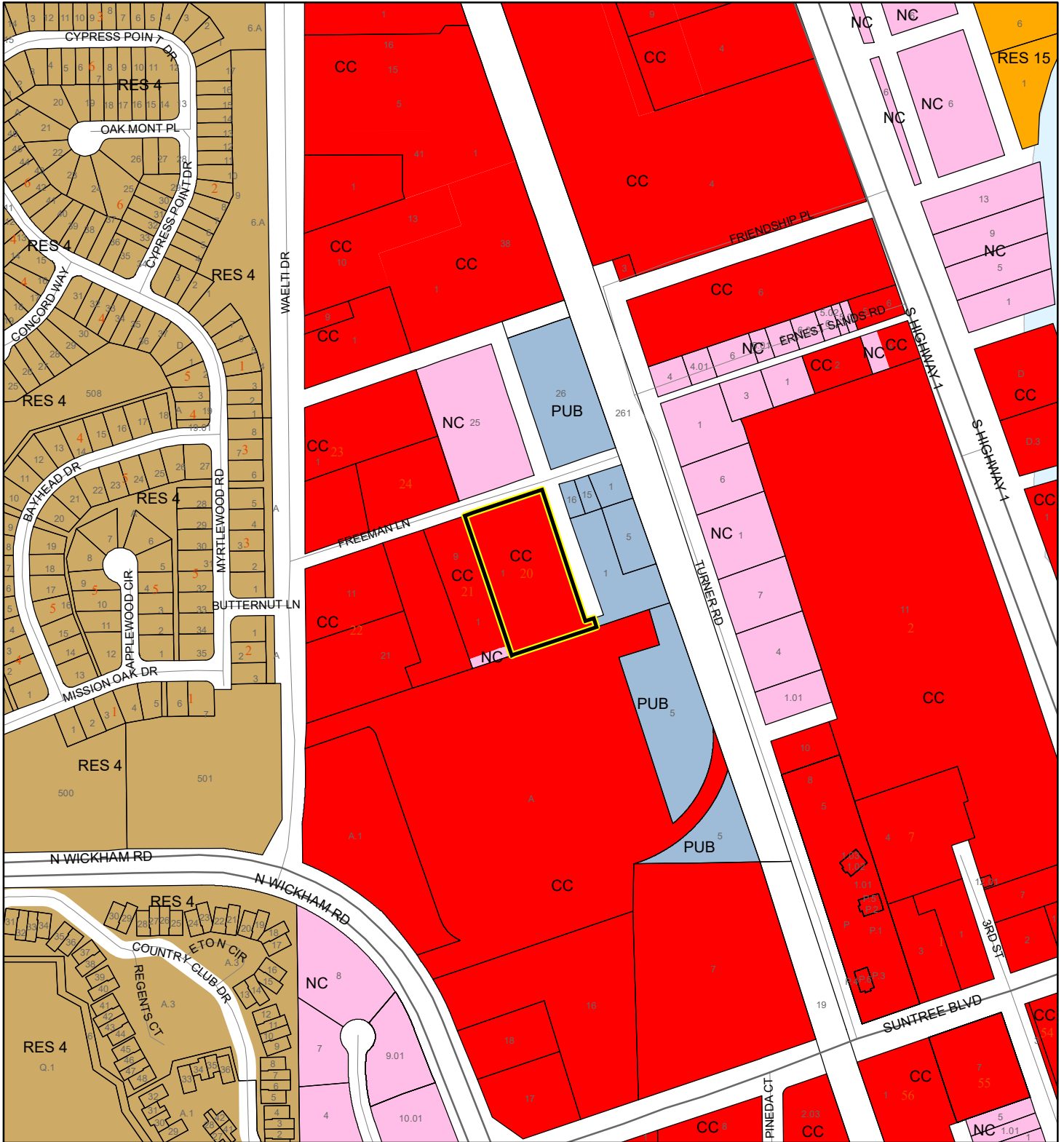
Produced by BoCC - GIS Date: 2/6/2023

-  Subject Property
-  Parcels
-  Zoning



FUTURE LAND USE MAP

RANGER STORAGE LLC

23Z00009



1:4,800 or 1 inch = 400 feet

 Subject Property
 Parcels

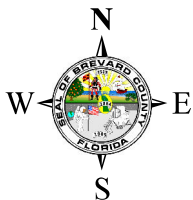
This map was compiled from recorded documents and does not reflect an actual survey. The Brevard County Board of County Commissioners does not assume responsibility for errors or omissions hereon.

Produced by BoCC - GIS Date: 2/6/2023

AERIAL MAP

RANGER STORAGE LLC

23Z00009




1:2,400 or 1 inch = 200 feet

PHOTO YEAR: 2022

This map was compiled from recorded documents and does not reflect an actual survey. The Brevard County Board of County Commissioners does not assume responsibility for errors or omissions hereon.

Produced by BoCC - GIS Date: 2/7/2023

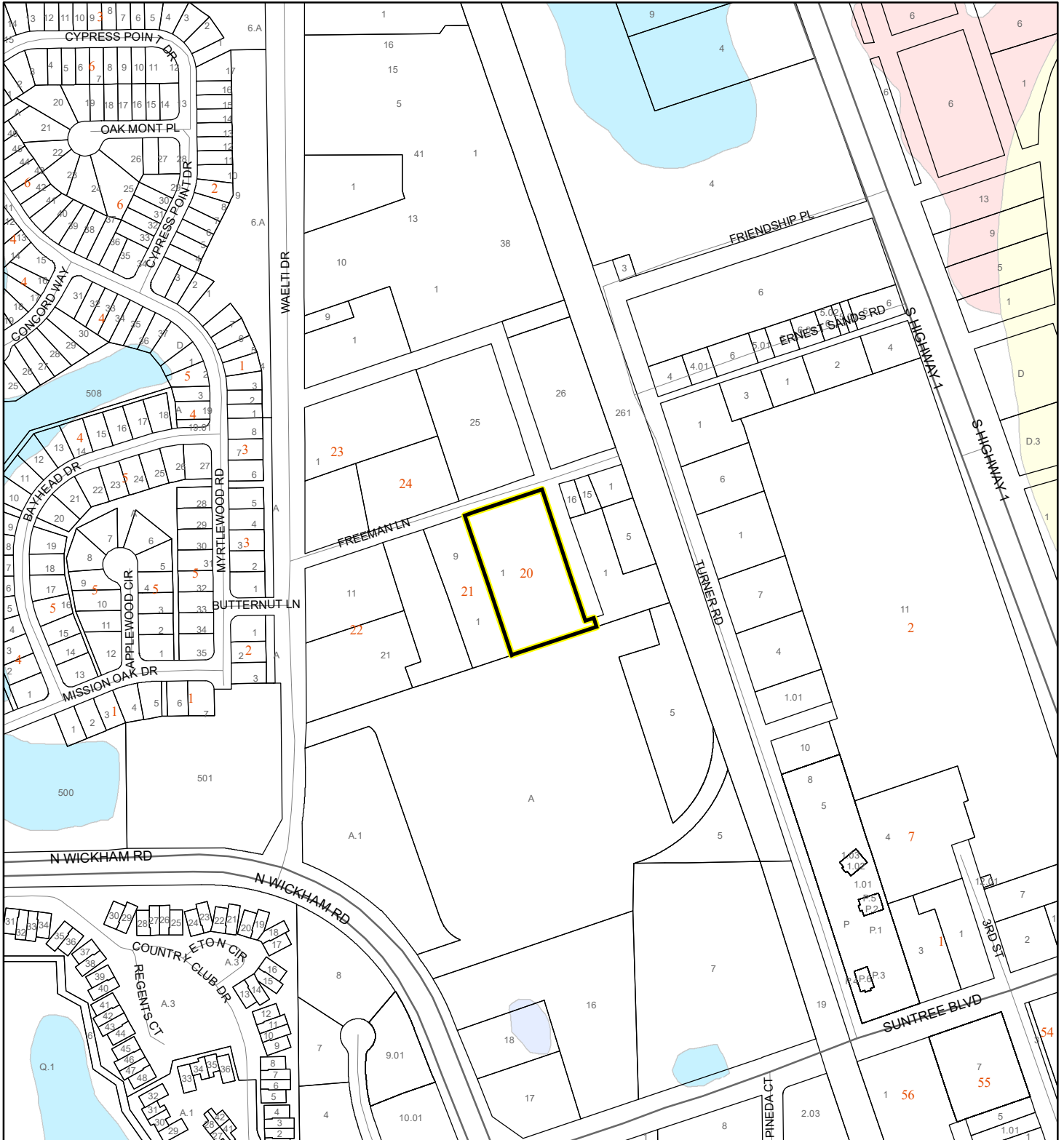
 Subject Property

 Parcels

NWI WETLANDS MAP

RANGER STORAGE LLC

23Z00009










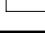


1:4,800 or 1 inch = 400 feet

This map was compiled from recorded documents and does not reflect an actual survey. The Brevard County Board of County Commissioners does not assume responsibility for errors or omissions hereon.

Produced by BoCC - GIS Date: 2/6/2023

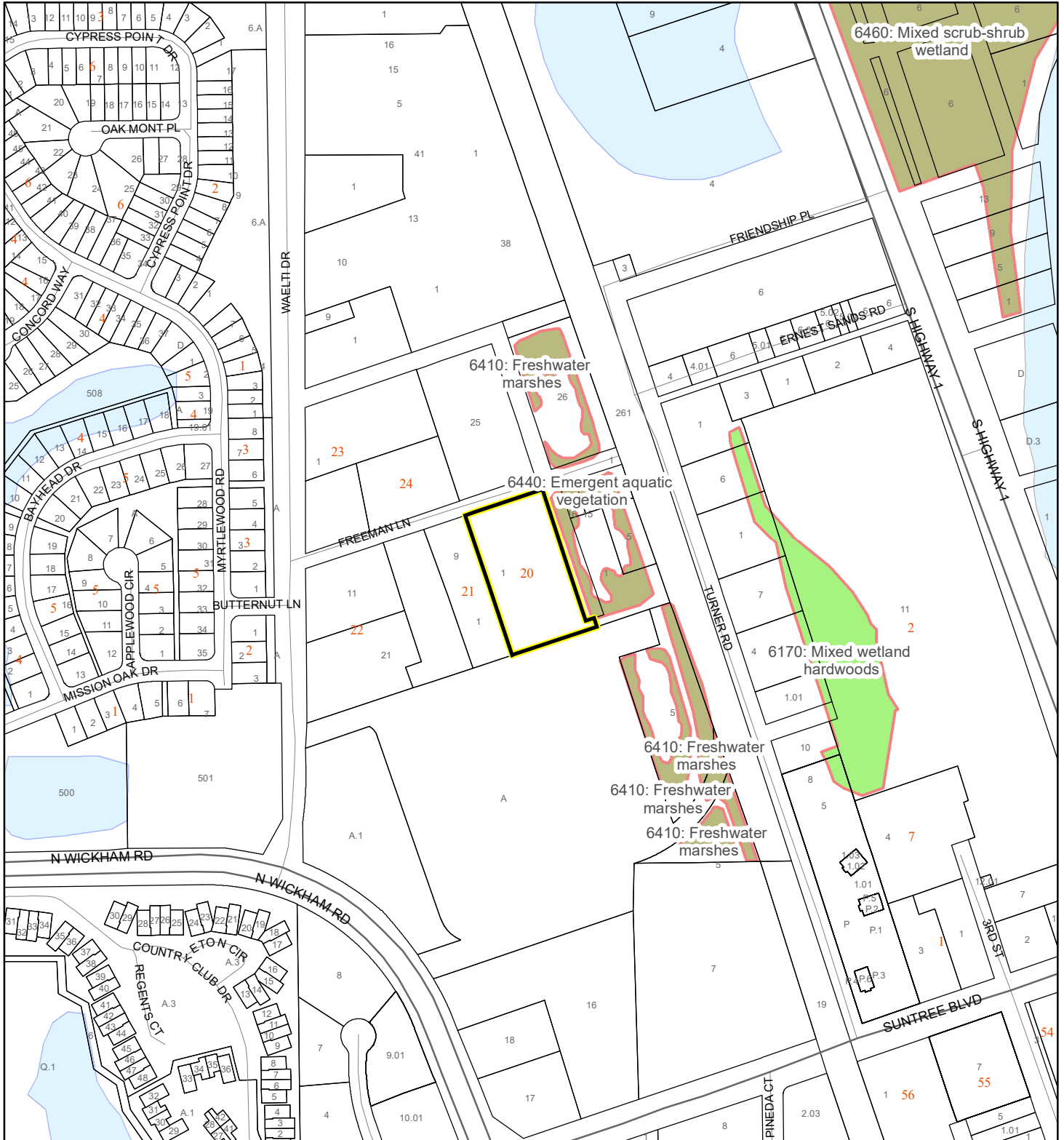
National Wetlands Inventory (NWI)

- | | |
|--|--|
|  Estuarine and Marine Deepwater |  Freshwater Pond |
|  Estuarine and Marine Wetland |  Lake |
|  Freshwater Emergent Wetland |  Other |
|  Freshwater Forested/Shrub Wetland |  Riverine |
| |  Subject Property |
| |  Parcels |

SJRWMD FLUCCS WETLANDS - 6000 Series MAP

RANGER STORAGE LLC

23Z00009



1:4,800 or 1 inch = 400 feet

This map was compiled from recorded documents and does not reflect an actual survey. The Brevard County Board of County Commissioners does not assume responsibility for errors or omissions hereon.

Produced by BoCC - GIS Date: 2/6/2023

SJRWMD FLUCCS WETLANDS

- Wetland Hardwood Forests - Series 6100
- Wetland Coniferous Forest - Series 6200
- Wetland Forested Mixed - Series 6300
- Vegetated Non-Forested Wetlands - Series 6400
- Non-Vegetated Wetland - Series 6500

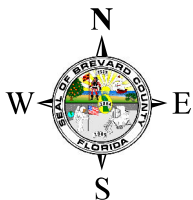
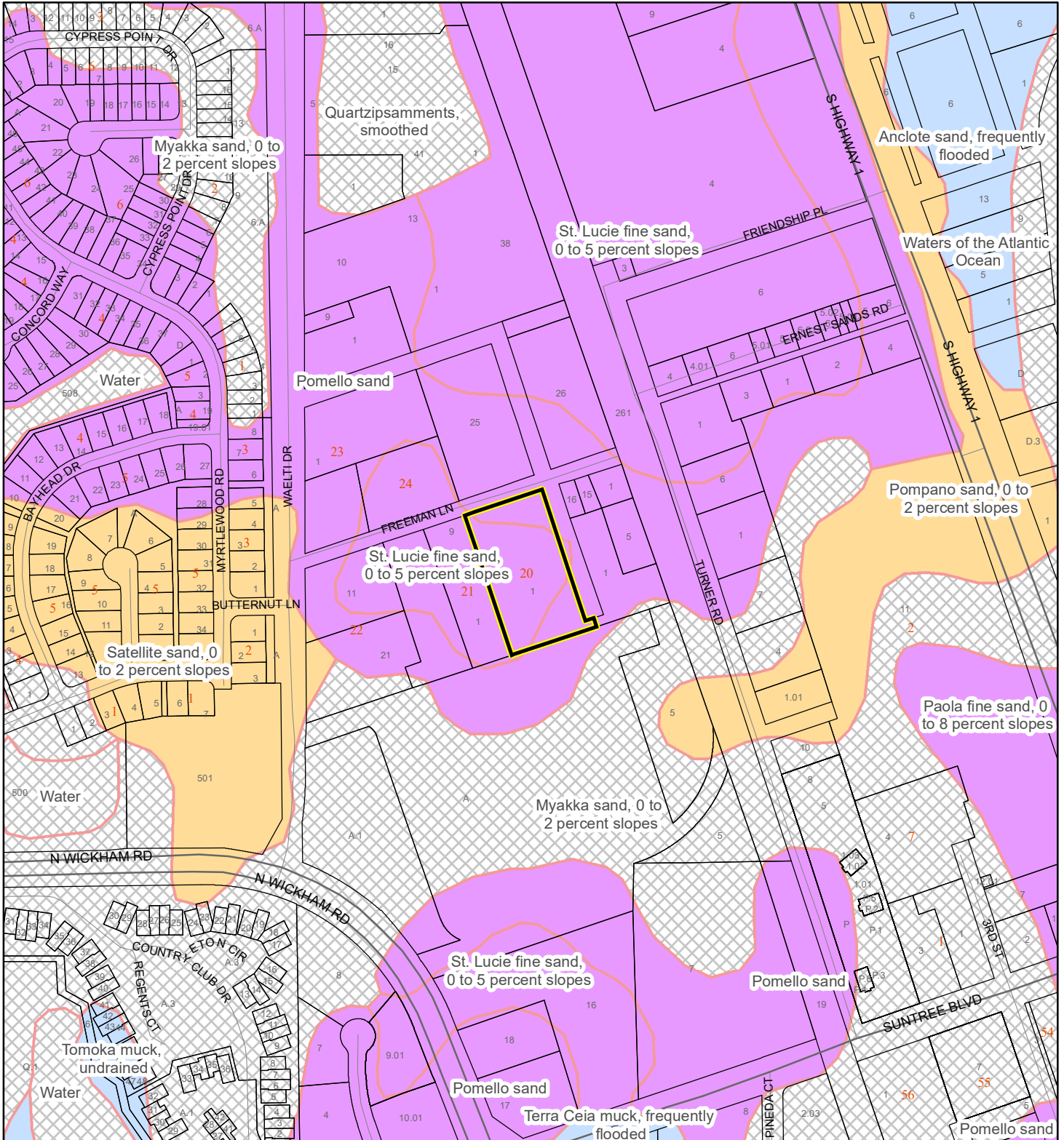
Subject Property

Parcels

USDA SCSSS SOILS MAP

RANGER STORAGE LLC

23Z00009



1:4,800 or 1 inch = 400 feet

This map was compiled from recorded documents and does not reflect an actual survey. The Brevard County Board of County Commissioners does not assume responsibility for errors or omissions hereon.

Produced by BoCC - GIS Date: 2/6/2023

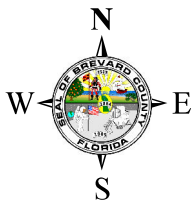
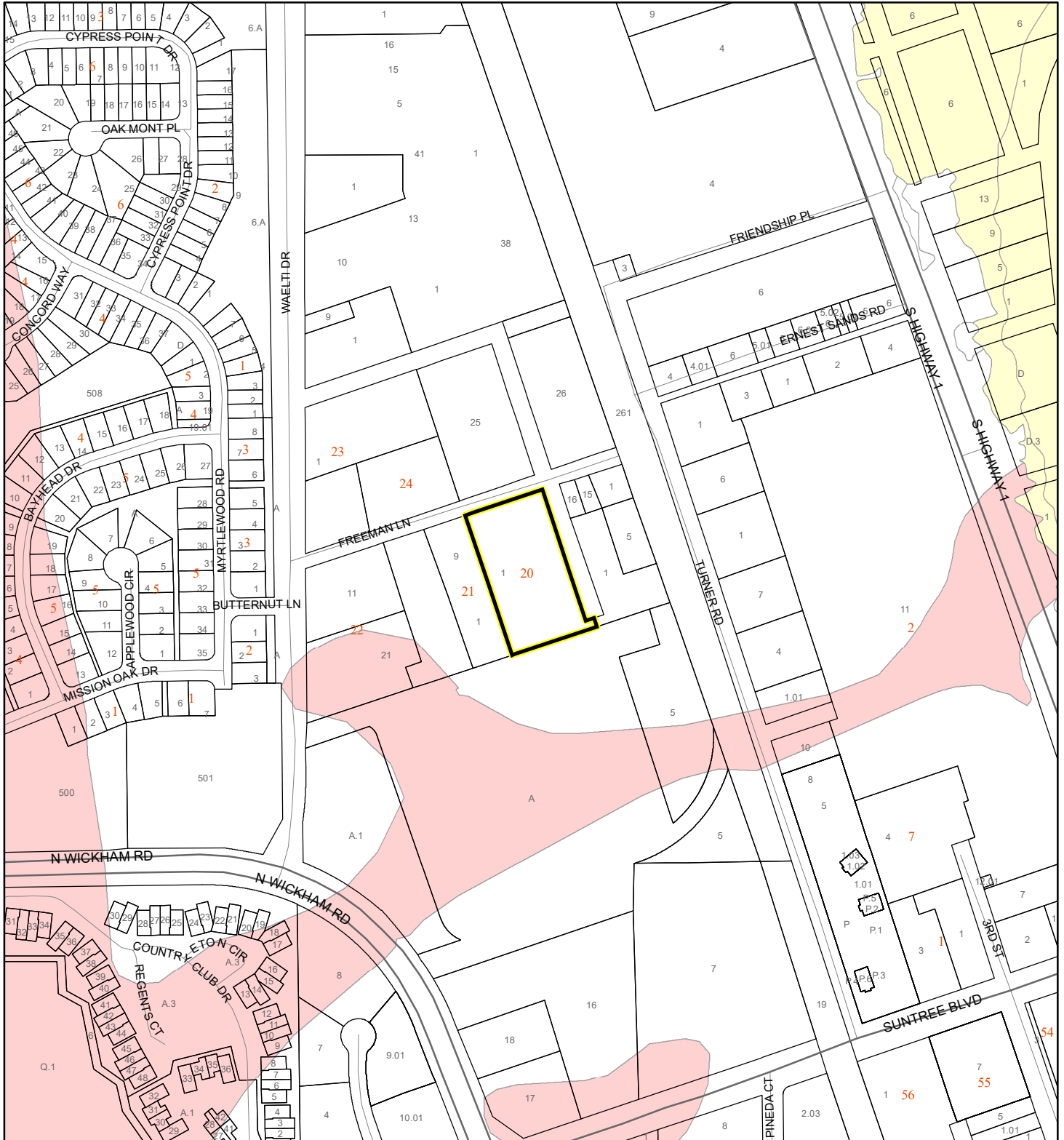
USDA SCSSS Soils

- Aquifer and Hydric
- Aquifer
- Hydric
- None
- Subject Property
- Parcels

FEMA FLOOD ZONES MAP

RANGER STORAGE LLC

23Z00009



1:4,800 or 1 inch = 400 feet

This map was compiled from recorded documents and does not reflect an actual survey. The Brevard County Board of County Commissioners does not assume responsibility for errors or omissions hereon.

Produced by BoCC - GIS Date: 2/6/2023

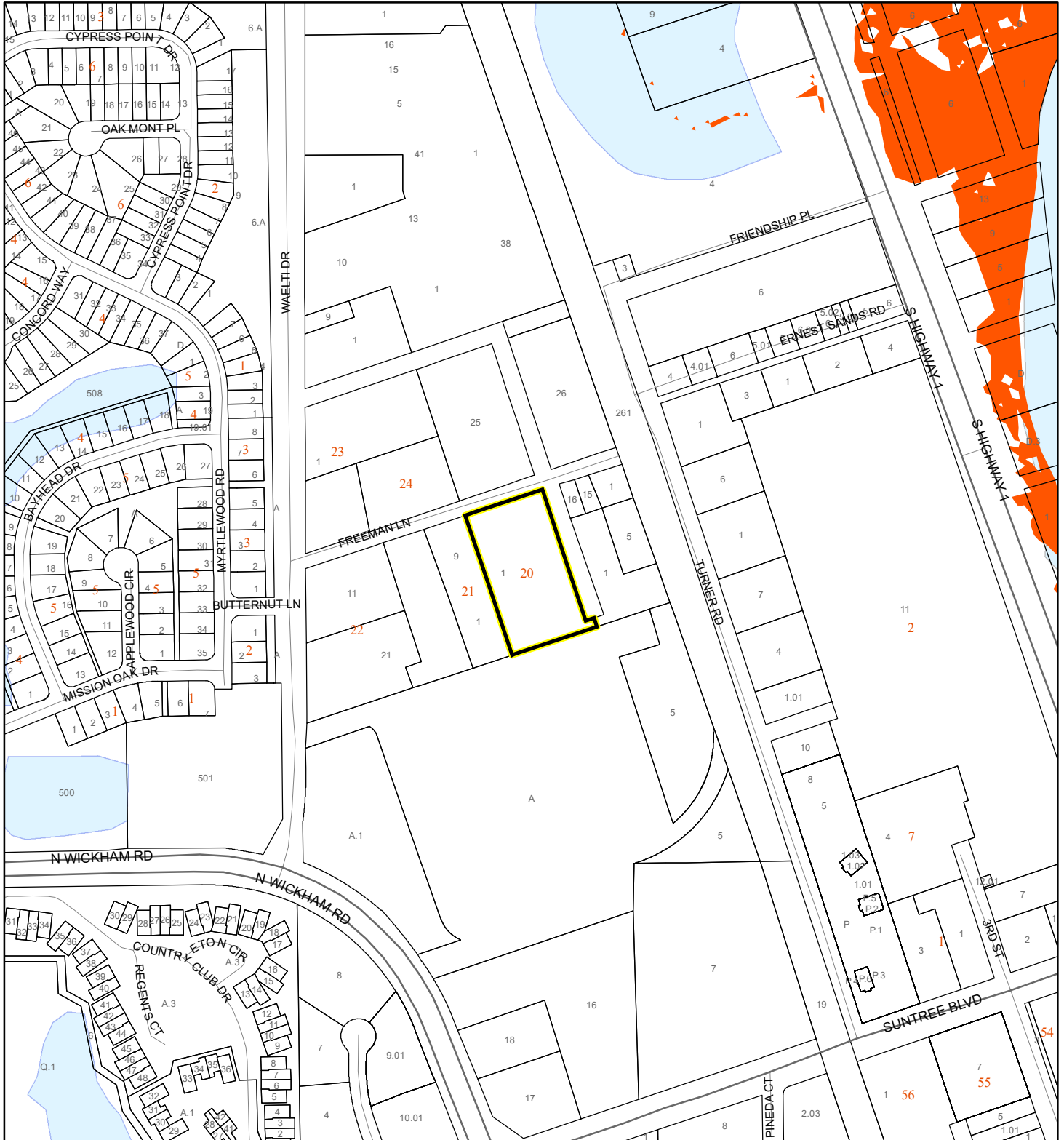
FEMA Flood Zones

- | | | |
|--|--|---|
|  A |  AO |  X |
|  AE |  Open Water | |
|  AH |  VE | |
|  Subject Property |  Parcels | |

COASTAL HIGH HAZARD AREA MAP

RANGER STORAGE LLC

23Z00009



1:4,800 or 1 inch = 400 feet

This map was compiled from recorded documents and does not reflect an actual survey. The Brevard County Board of County Commissioners does not assume responsibility for errors or omissions hereon.

Produced by BoCC - GIS Date: 2/6/2023

 Subject Property

 Parcels

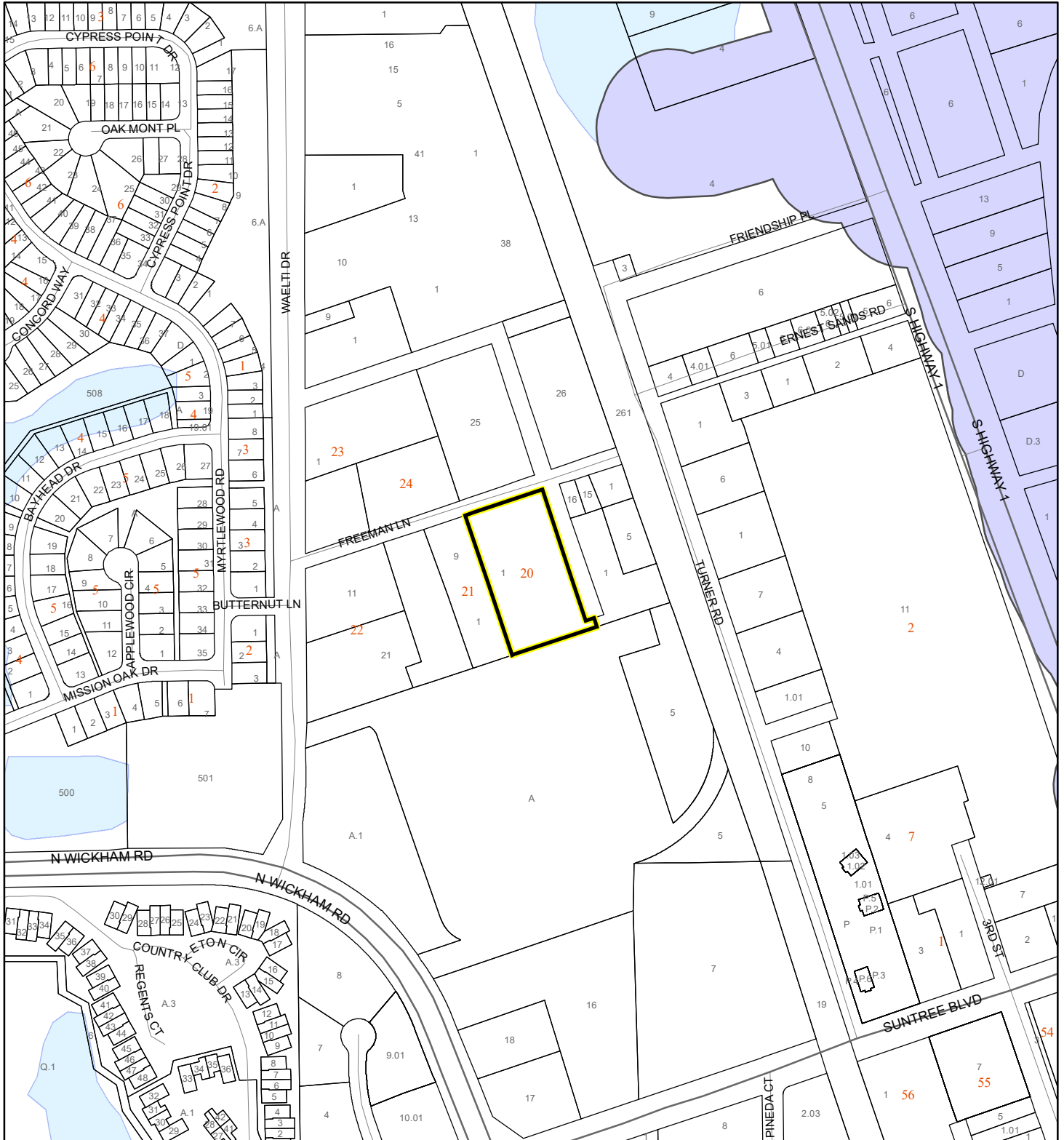
Coastal High Hazard Area

 SurgeZoneCat1

INDIAN RIVER LAGOON SEPTIC OVERLAY MAP

RANGER STORAGE LLC

23Z00009



1:4,800 or 1 inch = 400 feet

This map was compiled from recorded documents and does not reflect an actual survey. The Brevard County Board of County Commissioners does not assume responsibility for errors or omissions herein.

Produced by BoCC - GIS Date: 2/6/2023


 Subject Property

 Parcels

Septic Overlay

 40 Meters

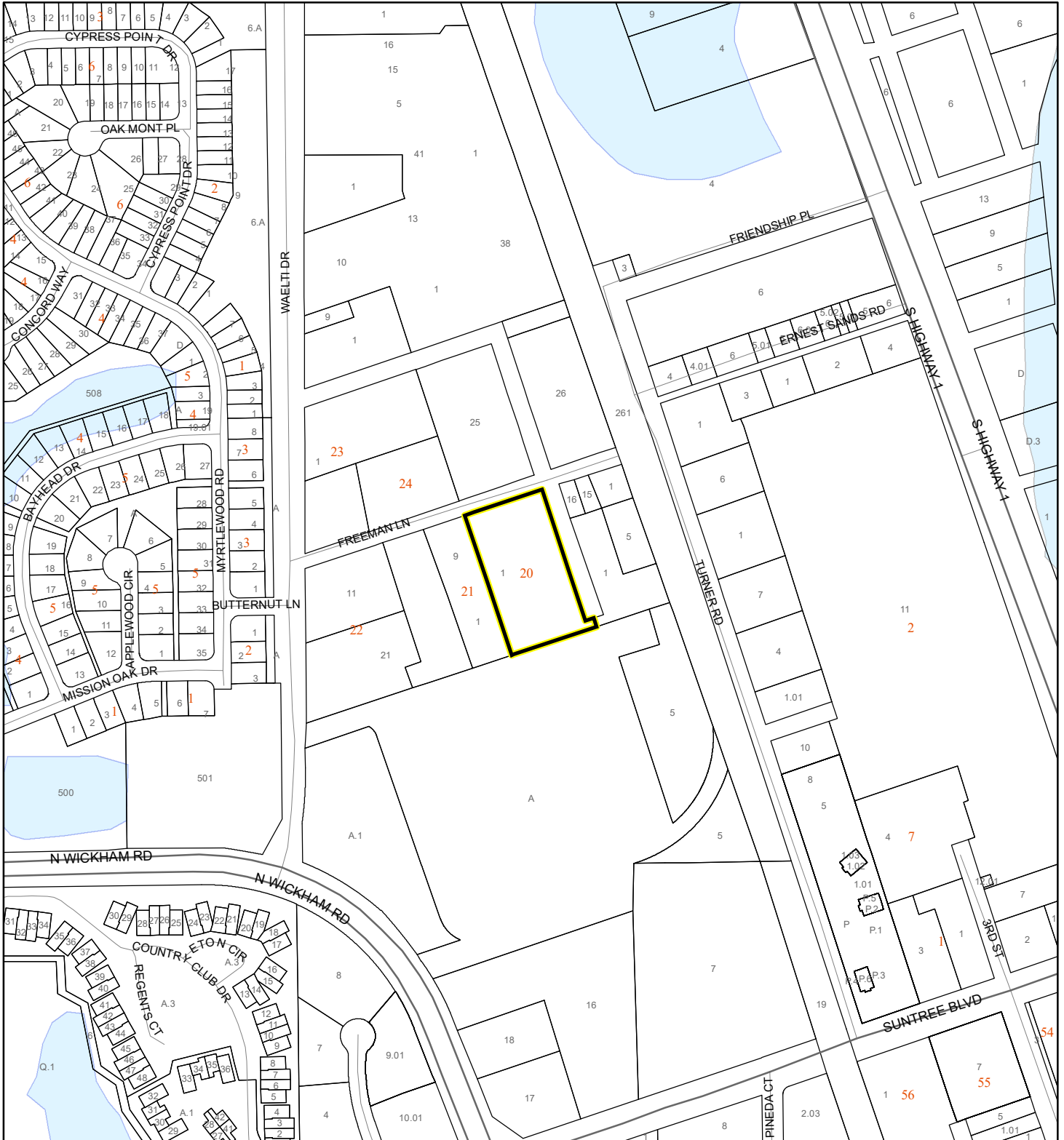
 60 Meters

 All Distances

EAGLE NESTS MAP

RANGER STORAGE LLC

23Z00009



1:4,800 or 1 inch = 400 feet

This map was compiled from recorded documents and does not reflect an actual survey. The Brevard County Board of County Commissioners does not assume responsibility for errors or omissions hereon.

Produced by BoCC - GIS Date: 2/6/2023

 Subject Property

 Parcels

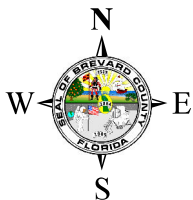
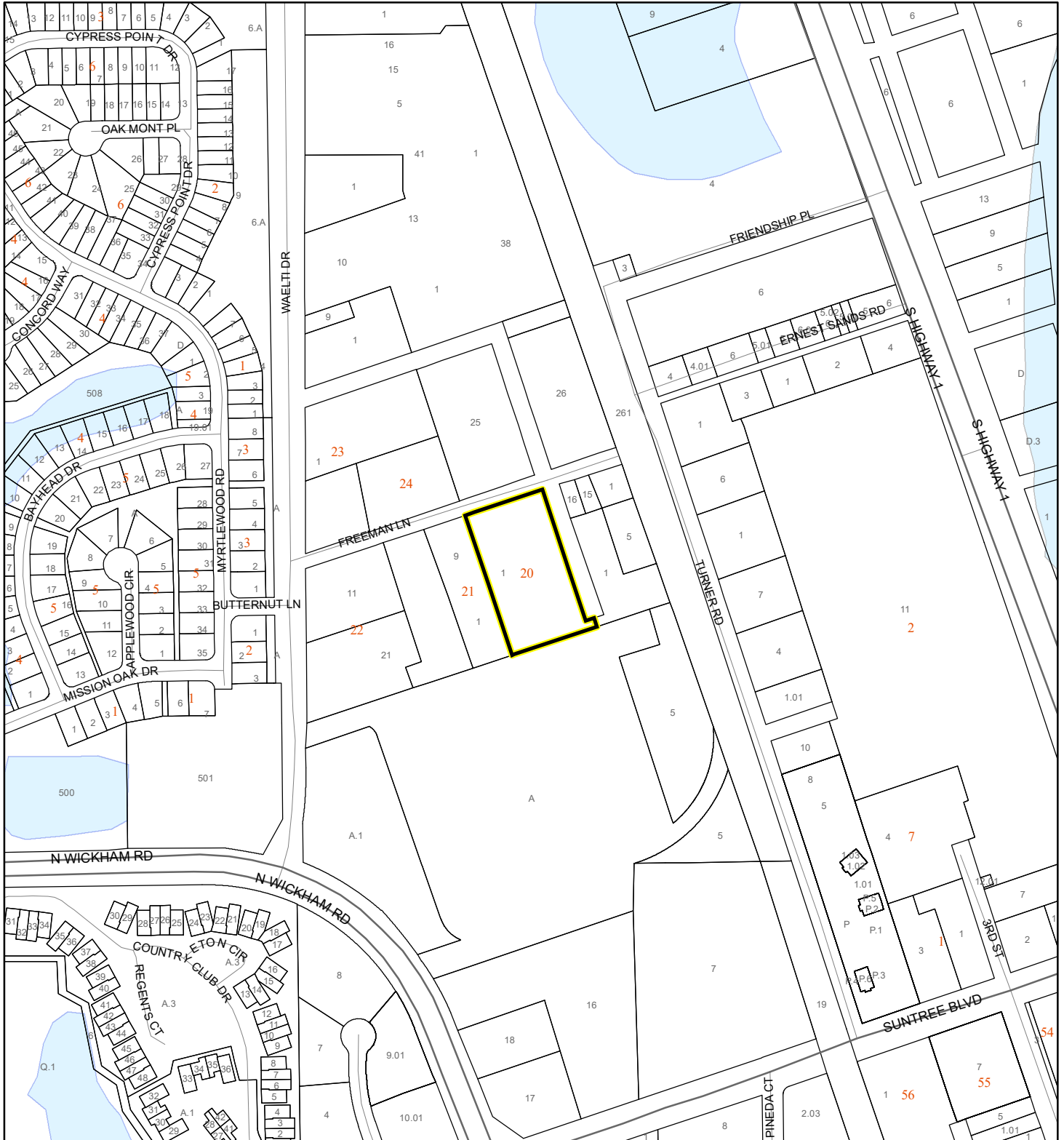


Eagle Nests
FWS 2010

SCRUB JAY OCCUPANCY MAP

RANGER STORAGE LLC


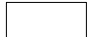

23Z00009



1:4,800 or 1 inch = 400 feet

This map was compiled from recorded documents and does not reflect an actual survey. The Brevard County Board of County Commissioners does not assume responsibility for errors or omissions hereon.

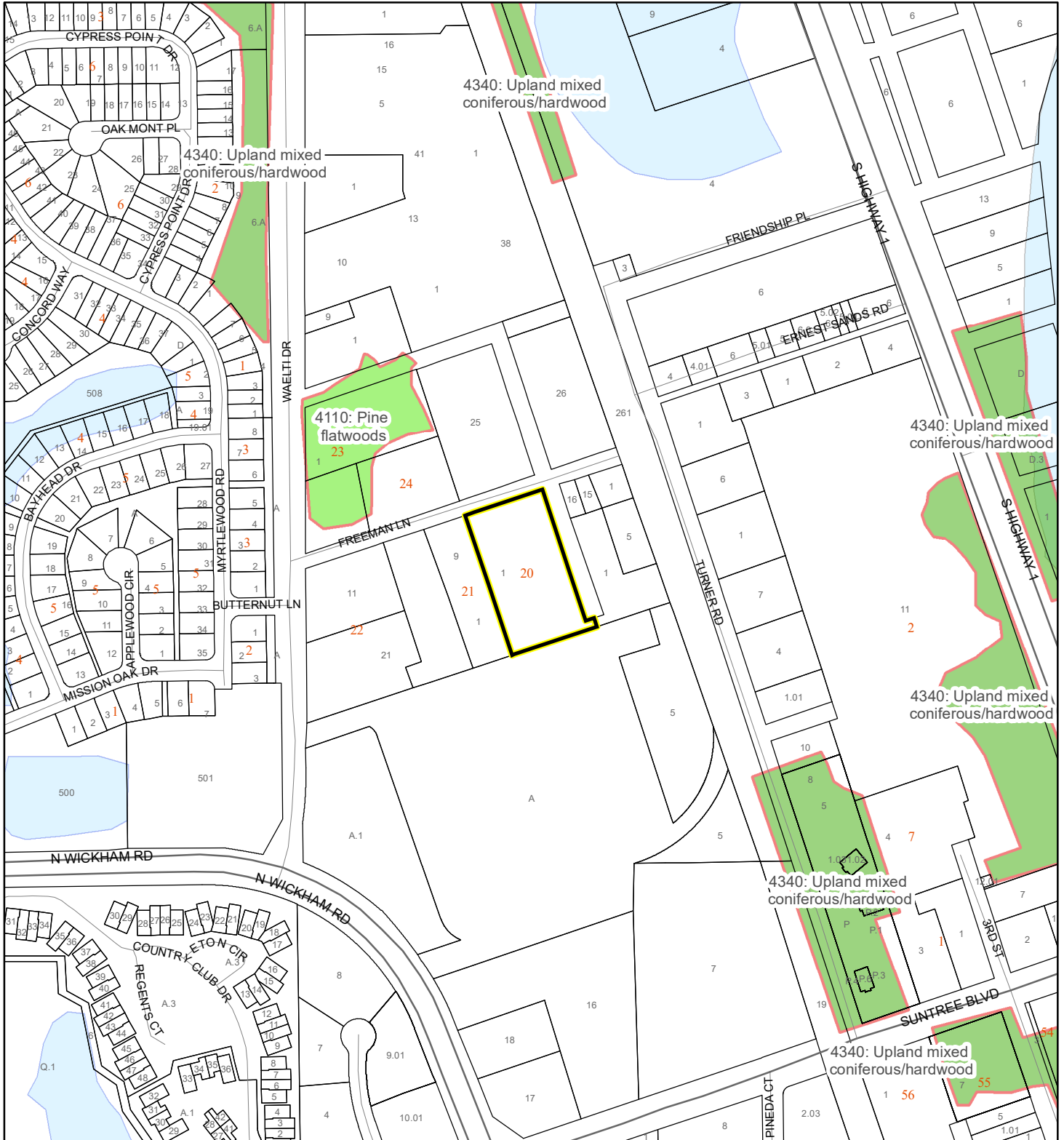
Produced by BoCC - GIS Date: 2/6/2023

-  Subject Property
-  Parcels
-  Scrub Jay Occupancy

SJRWMD FLUCCS UPLAND FORESTS - 4000 Series MAP

RANGER STORAGE LLC

23Z00009



1:4,800 or 1 inch = 400 feet

This map was compiled from recorded documents and does not reflect an actual survey. The Brevard County Board of County Commissioners does not assume responsibility for errors or omissions hereon.

Produced by BoCC - GIS Date: 2/6/2023

SJRWMD FLUCCS Upland Forests

- Upland Coniferous Forest - 4100 Series
- Upland Hardwood Forest - 4200 Series
- Upland Mixed Forest - 4300 Series
- Tree Plantations - 4400 Series

Subject Property

Parcels