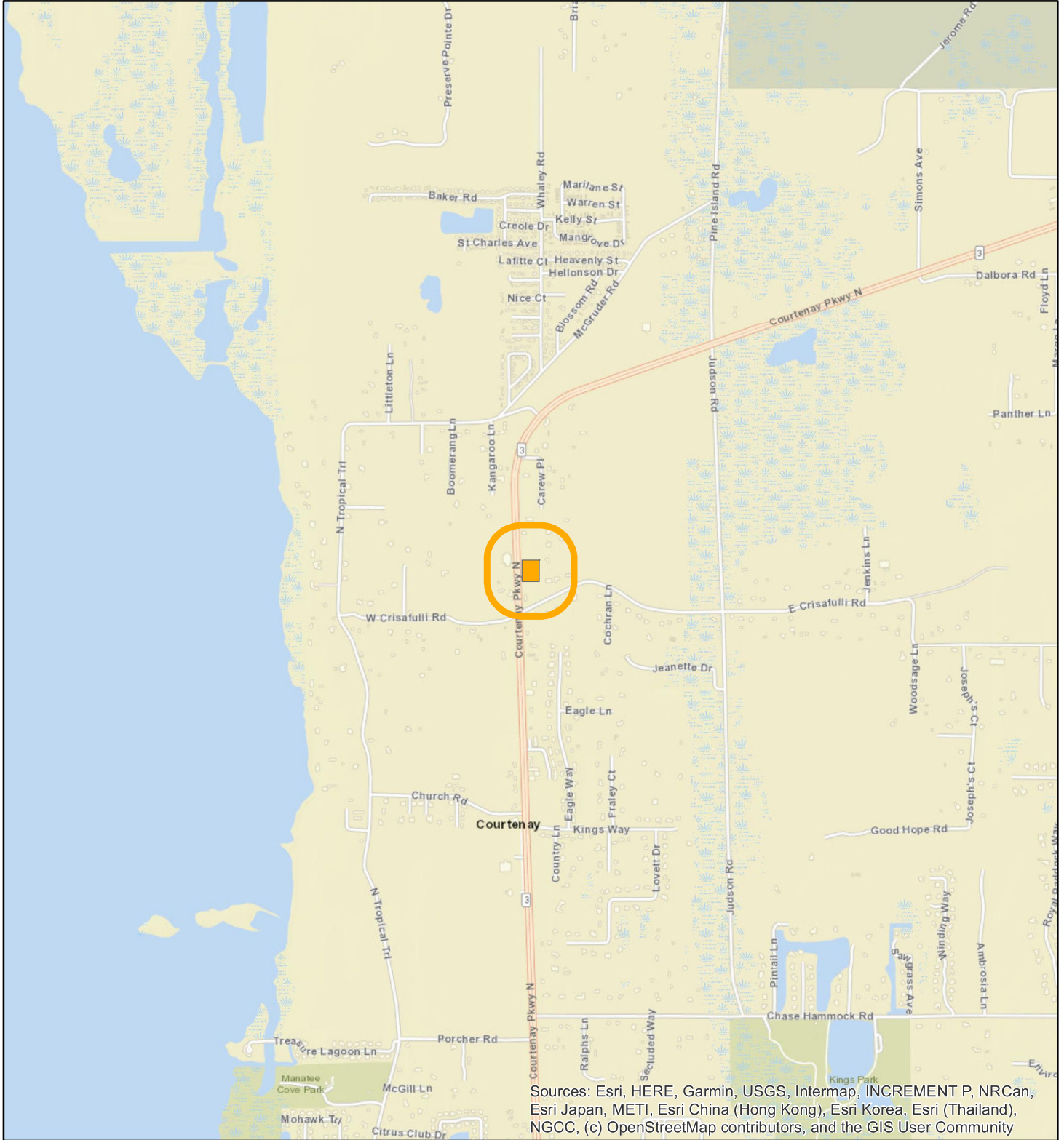


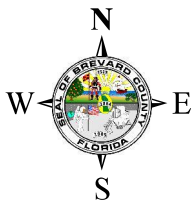
# LOCATION MAP

## UNDERWOOD'S EQUIPMENT REPAIR LLC

26Z00006



Sources: Esri, HERE, Garmin, USGS, Intermap, INCREMENT P, NRCan, Esri Japan, METI, Esri China (Hong Kong), Esri Korea, Esri (Thailand), NGCC, (c) OpenStreetMap contributors, and the GIS User Community



1:24,000 or 1 inch = 2,000 feet

Buffer Distance: 500 feet

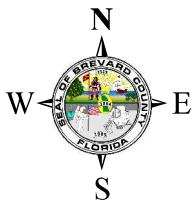
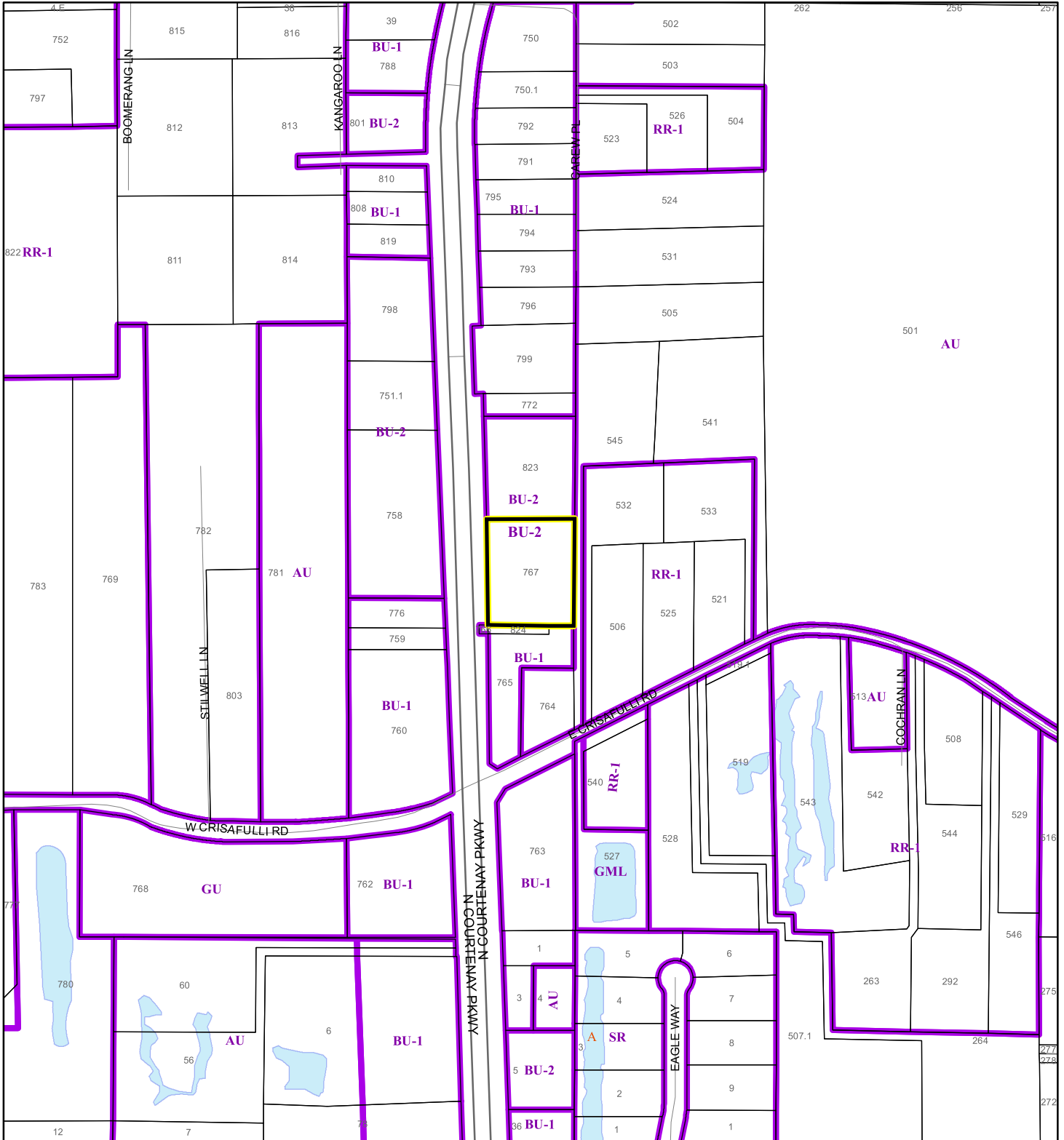
This map was compiled from recorded documents and does not reflect an actual survey. The Brevard County Board of County Commissioners does not assume responsibility for errors or omissions hereon.

Produced by BoCC - GIS Date: 2/6/2026

- Buffer
- Subject Property

# ZONING MAP

UNDERWOOD'S EQUIPMENT REPAIR LLC  
26Z00006



1:4,800 or 1 inch = 400 feet

- Subject Property
- Parcels
- Zoning

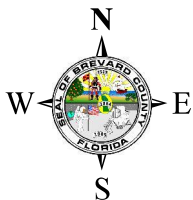
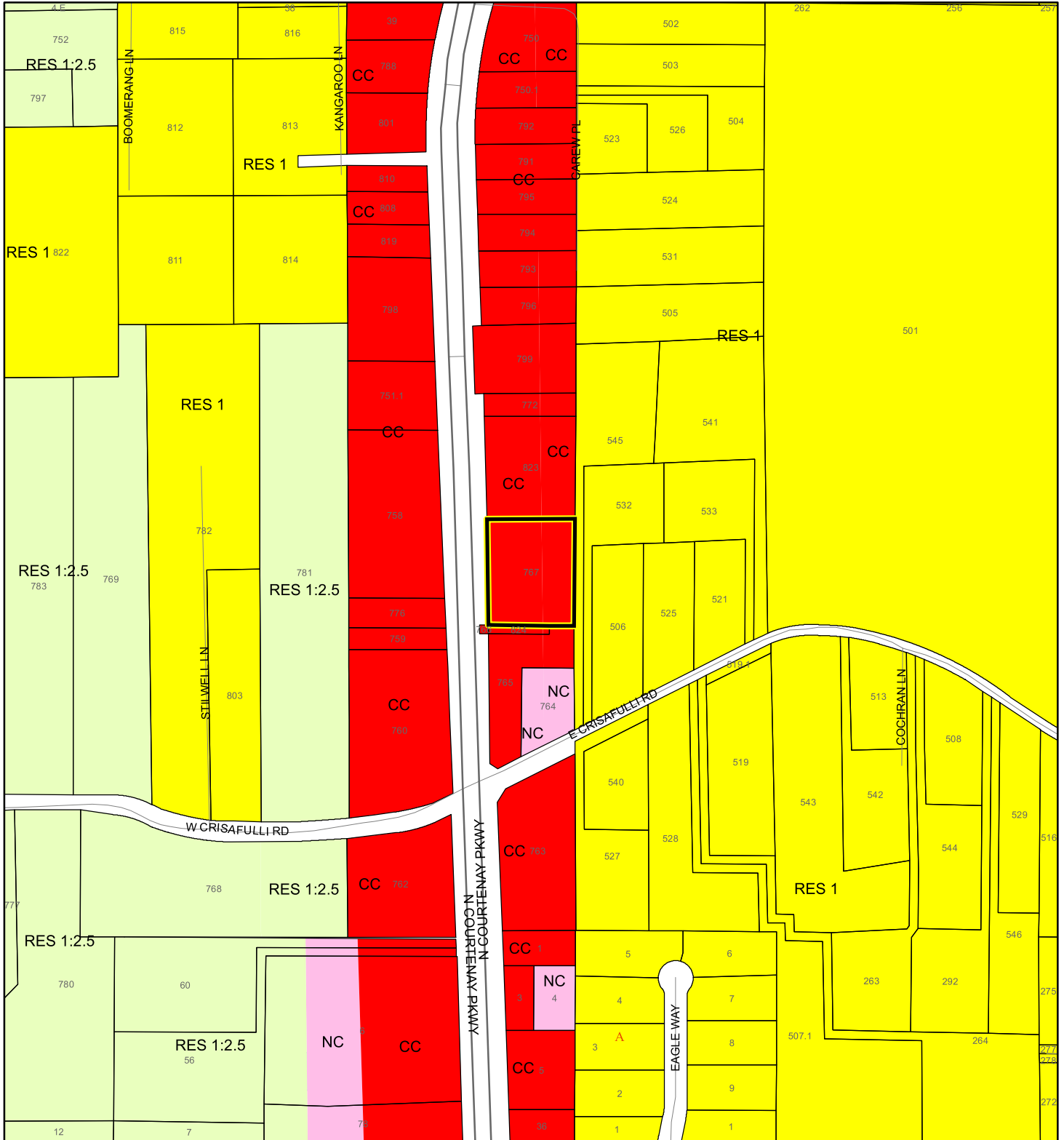
This map was compiled from recorded documents and does not reflect an actual survey. The Brevard County Board of County Commissioners does not assume responsibility for errors or omissions hereon.

Produced by BoCC - GIS Date: 2/6/2026



# FUTURE LAND USE MAP

UNDERWOOD'S EQUIPMENT REPAIR LLC

26Z00006



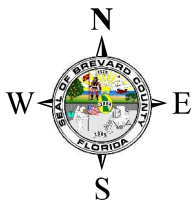
1:4,800 or 1 inch = 400 feet

 Subject Property  
 Parcels

This map was compiled from recorded documents and does not reflect an actual survey. The Brevard County Board of County Commissioners does not assume responsibility for errors or omissions hereon.

Produced by BoCC - GIS Date: 2/6/2026

AERIAL MAP  
UNDERWOOD'S EQUIPMENT REPAIR LLC  
26Z00006




1:4,800 or 1 inch = 400 feet

PHOTO YEAR: 2025

This map was compiled from recorded documents and does not reflect an actual survey. The Brevard County Board of County Commissioners does not assume responsibility for errors or omissions hereon.

Produced by BoCC - GIS Date: 2/6/2026

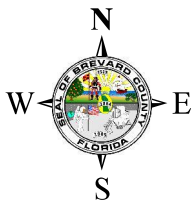
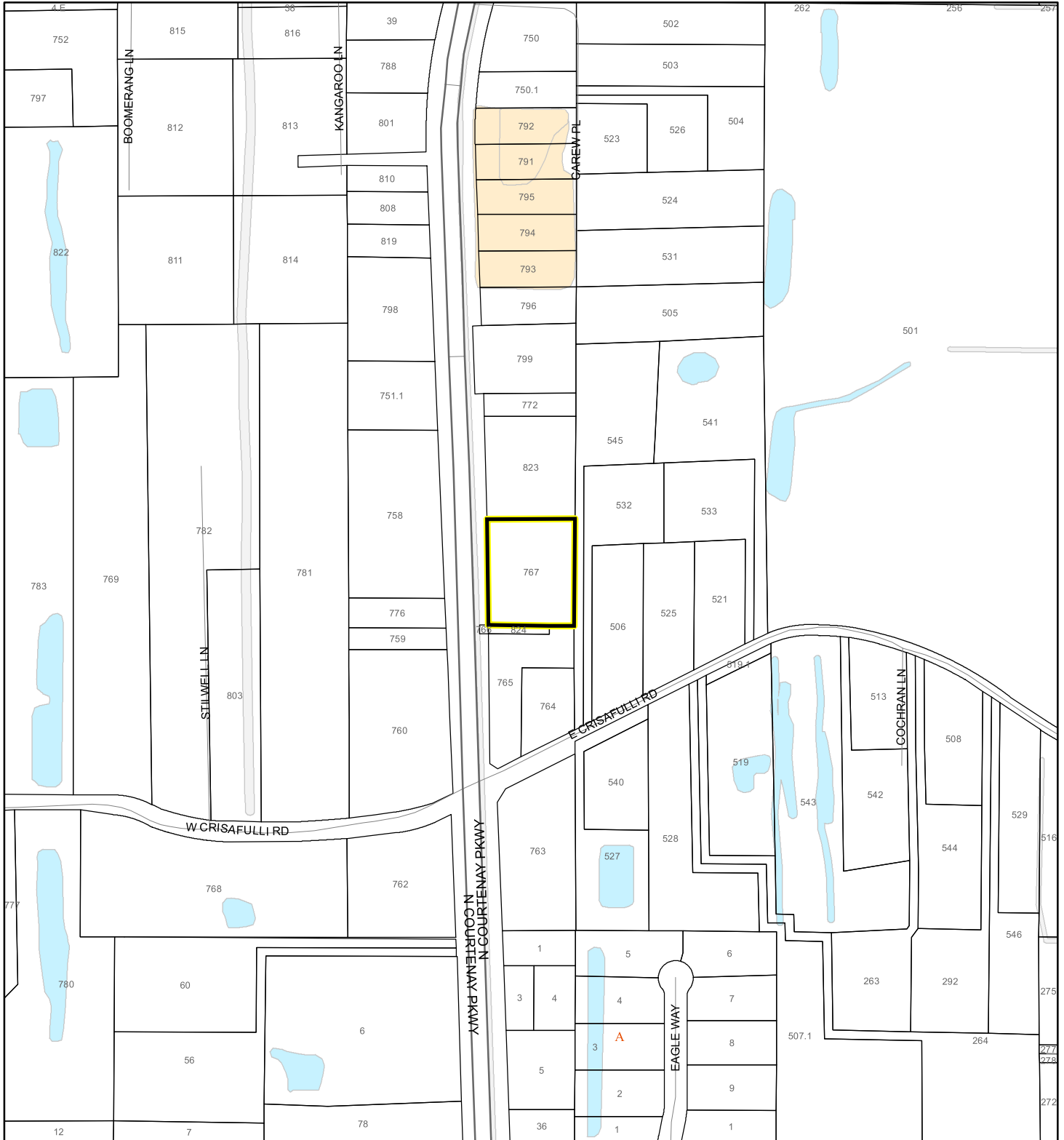
 Subject Property

 Parcels

# NWI WETLANDS MAP

## UNDERWOOD'S EQUIPMENT REPAIR LLC

### 26Z00006



1:4,800 or 1 inch = 400 feet

This map was compiled from recorded documents and does not reflect an actual survey. The Brevard County Board of County Commissioners does not assume responsibility for errors or omissions hereon.

Produced by BoCC - GIS Date: 2/6/2026

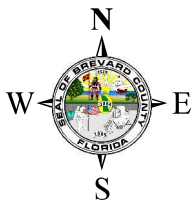
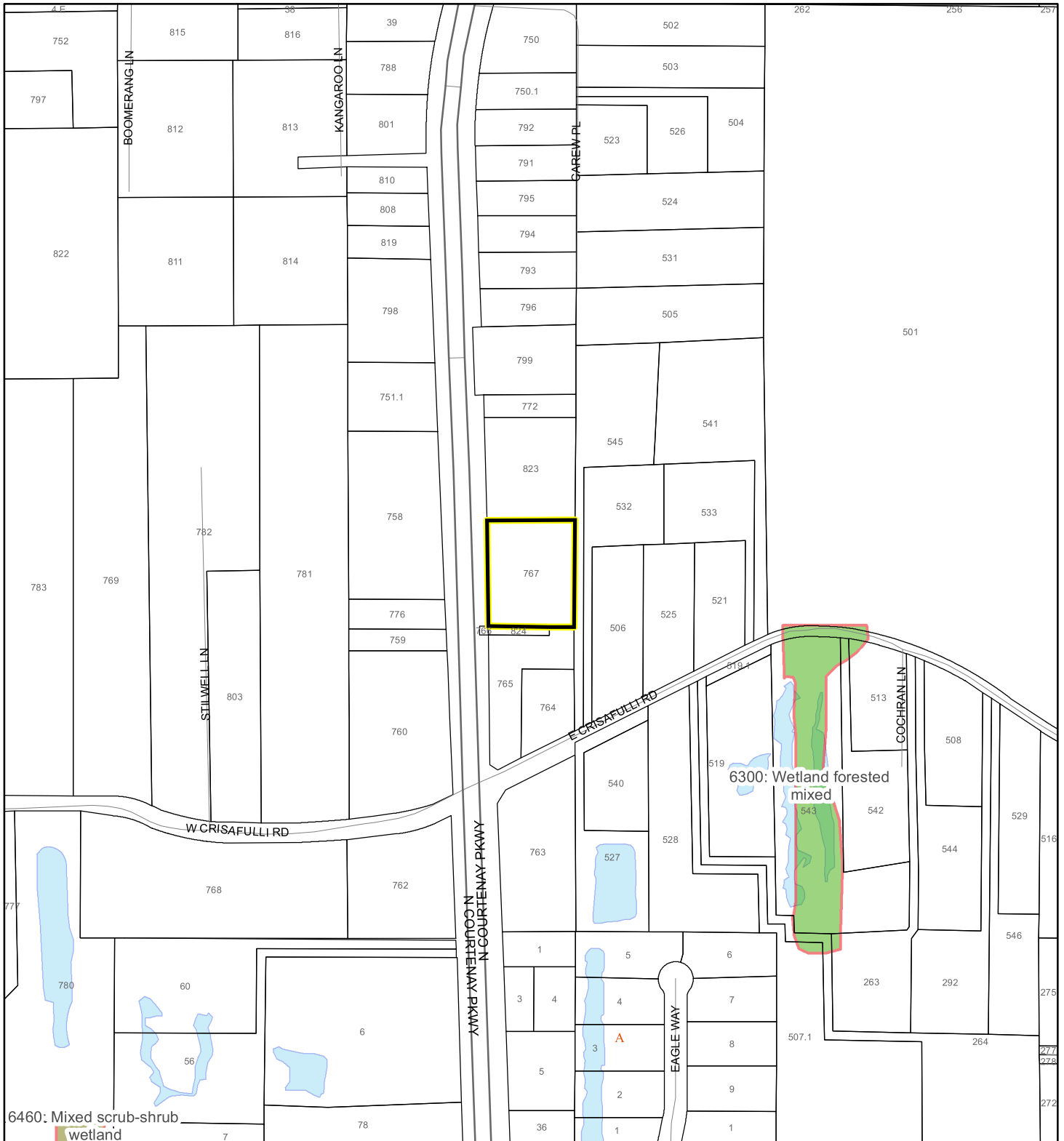
### National Wetlands Inventory (NWI)

- |                                   |                 |
|-----------------------------------|-----------------|
| Estuarine and Marine Deepwater    | Freshwater Pond |
| Estuarine and Marine Wetland      | Lake            |
| Freshwater Emergent Wetland       | Other           |
| Freshwater Forested/Shrub Wetland | Riverine        |
| Subject Property                  |                 |
| Parcels                           |                 |

# SJRWMD FLUCCS WETLANDS - 6000 Series MAP

UNDERWOOD'S EQUIPMENT REPAIR LLC

26Z00006



1:4,800 or 1 inch = 400 feet

This map was compiled from recorded documents and does not reflect an actual survey. The Brevard County Board of County Commissioners does not assume responsibility for errors or omissions hereon.

Produced by BoCC - GIS Date: 2/6/2026

## SJRWMD FLUCCS WETLANDS

- Wetland Hardwood Forests - Series 6100
- Wetland Coniferous Forest - Series 6200
- Wetland Forested Mixed - Series 6300
- Vegetated Non-Forested Wetlands - Series 6400
- Non-Vegetated Wetland - Series 6500

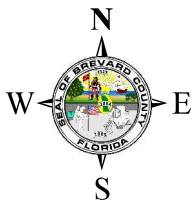
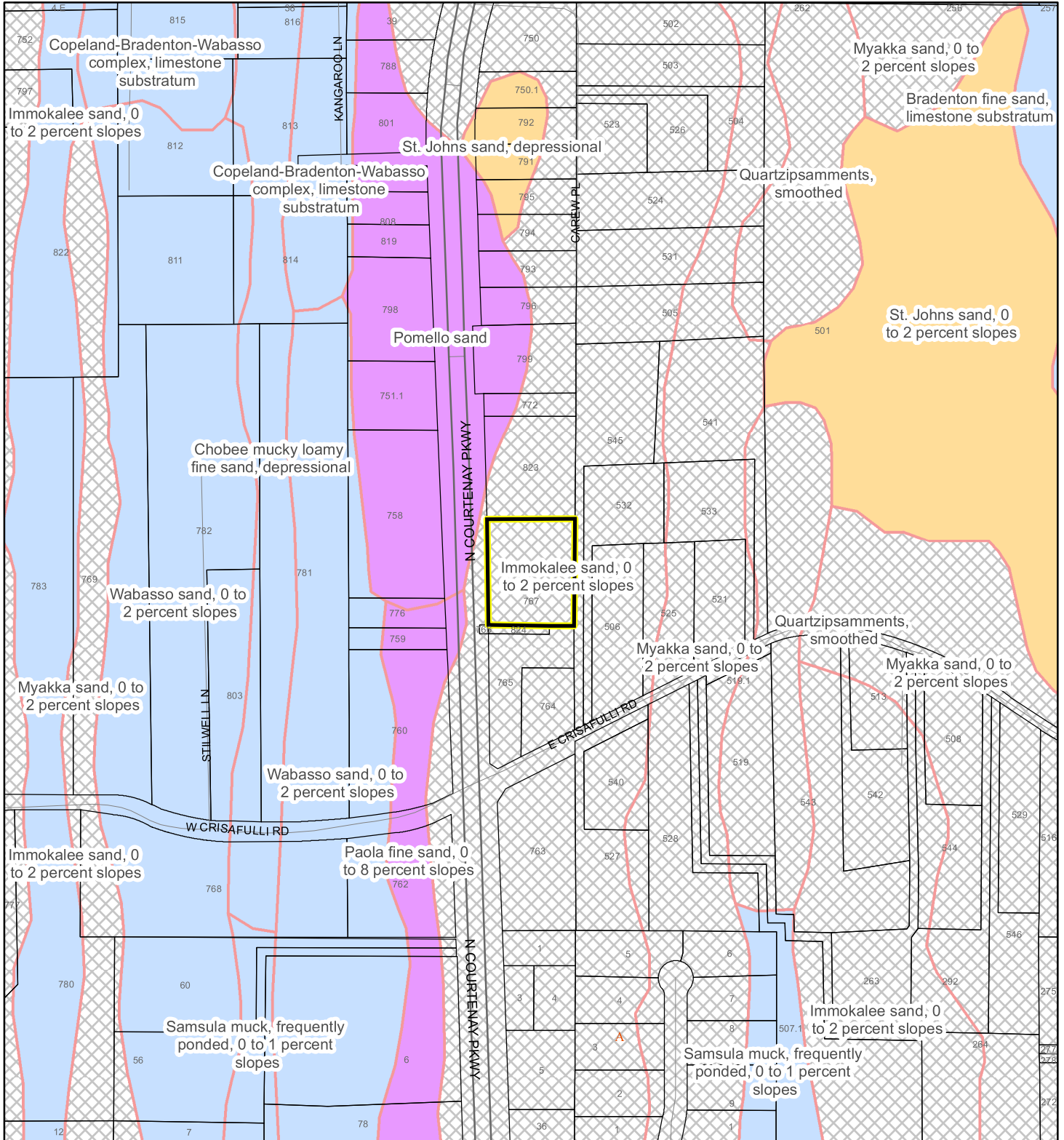
Subject Property

Parcels

# USDA SCSSS SOILS MAP

UNDERWOOD'S EQUIPMENT REPAIR LLC

26Z00006



1:4,800 or 1 inch = 400 feet

This map was compiled from recorded documents and does not reflect an actual survey. The Brevard County Board of County Commissioners does not assume responsibility for errors or omissions hereon.

Produced by BoCC - GIS Date: 2/6/2026

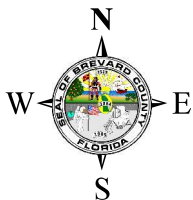
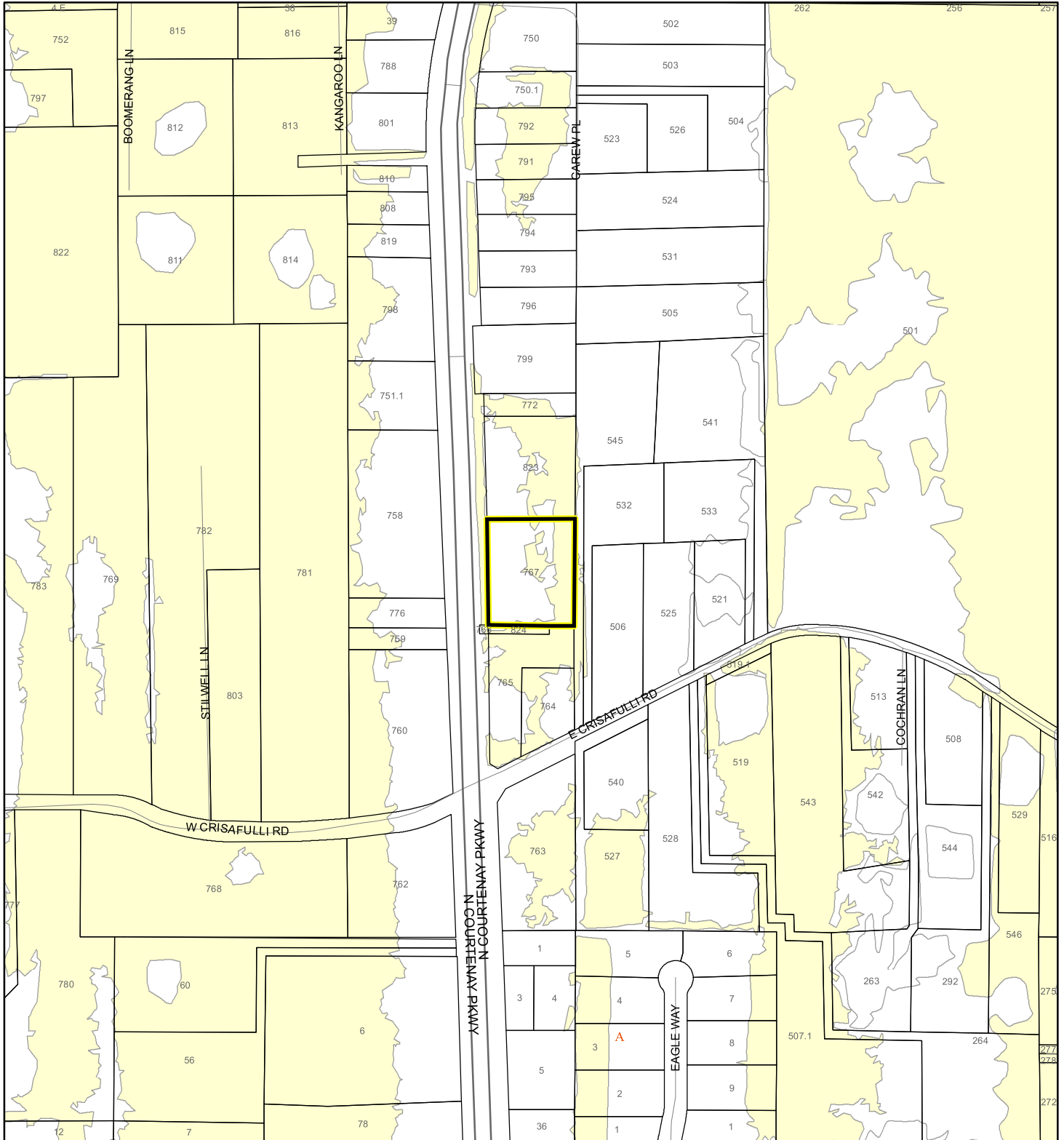
## USDA SCSSS Soils

- Aquifer and Hydric
- Aquifer
- Hydric
- None
- Subject Property
- Parcels

# FEMA FLOOD ZONES MAP

UNDERWOOD'S EQUIPMENT REPAIR LLC

26Z00006



1:4,800 or 1 inch = 400 feet

This map was compiled from recorded documents and does not reflect an actual survey. The Brevard County Board of County Commissioners does not assume responsibility for errors or omissions hereon.

Produced by BoCC - GIS Date: 2/6/2026

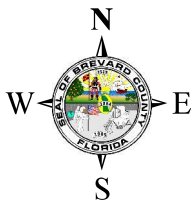
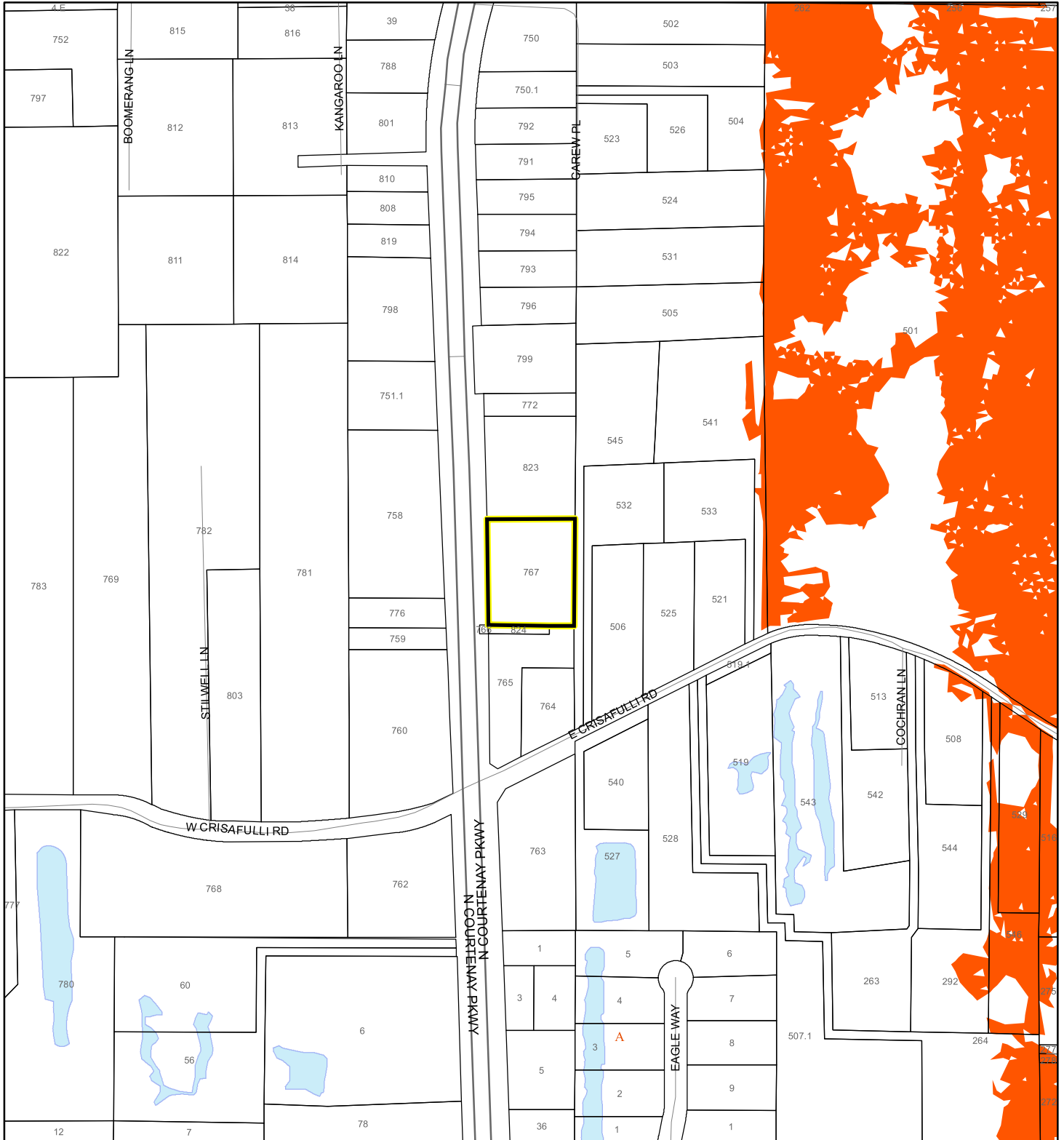
### FEMA Flood Zones

- |                  |            |   |
|------------------|------------|---|
| A                | AO         | X |
| AE               | Open Water |   |
| AH               | VE         |   |
| Subject Property | Parcels    |   |

# COASTAL HIGH HAZARD AREA MAP

UNDERWOOD'S EQUIPMENT REPAIR LLC

26Z00006



1:4,800 or 1 inch = 400 feet


This map was compiled from recorded documents and does not reflect an actual survey. The Brevard County Board of County Commissioners does not assume responsibility for errors or omissions hereon.

Produced by BoCC - GIS Date: 2/6/2026

 Subject Property

 Parcels

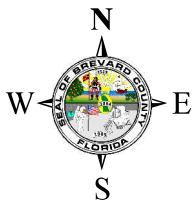
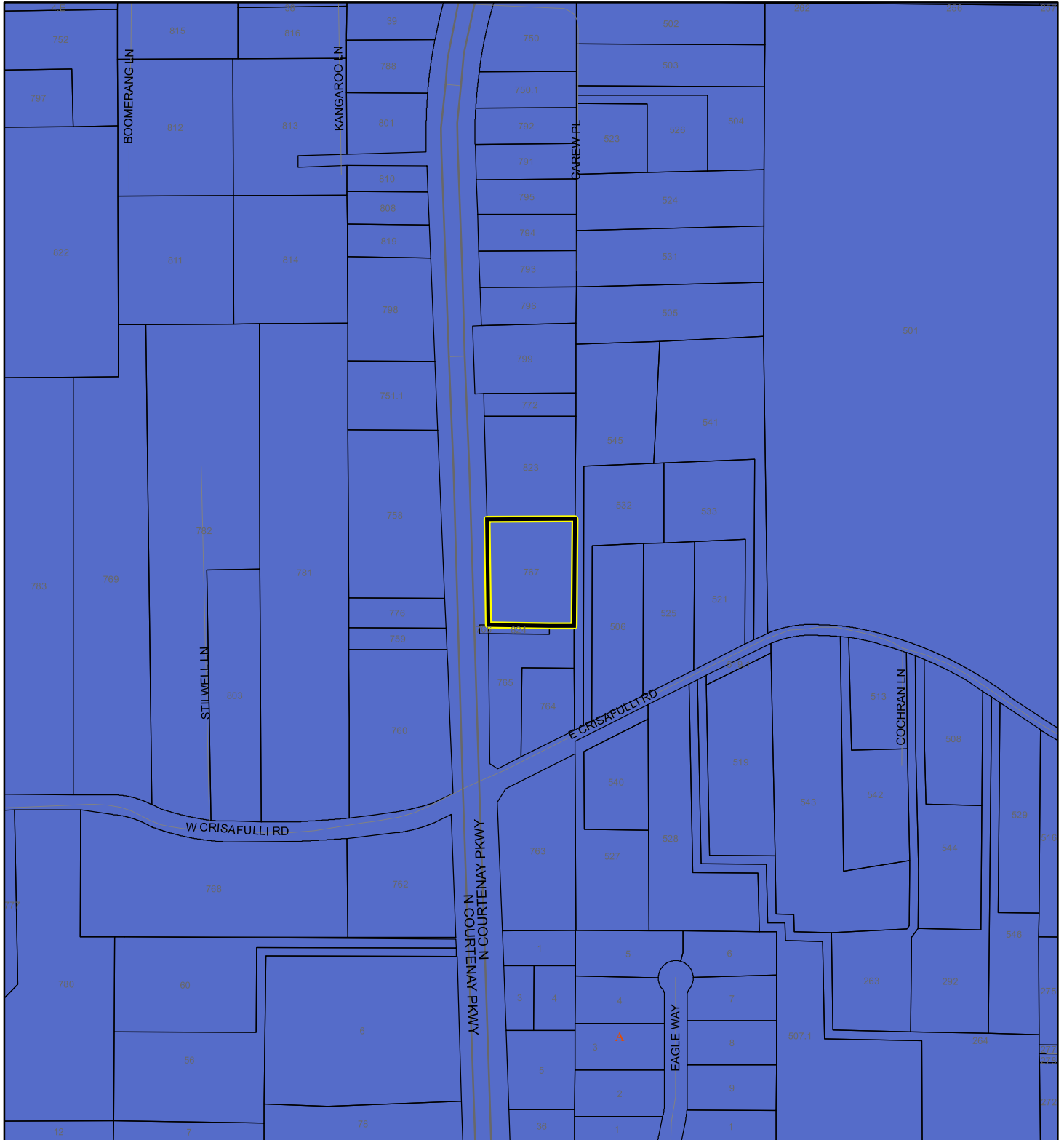
**Coastal High Hazard Area**

 SurgeZoneCat1

# INDIAN RIVER LAGOON SEPTIC OVERLAY MAP

UNDERWOOD'S EQUIPMENT REPAIR LLC

26Z00006



1:4,800 or 1 inch = 400 feet

This map was compiled from recorded documents and does not reflect an actual survey. The Brevard County Board of County Commissioners does not assume responsibility for errors or omissions hereon.

Produced by BoCC - GIS Date: 2/6/2026

 Subject Property

 Parcels

**Septic Overlay**

 40 Meters

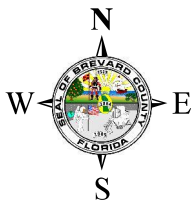
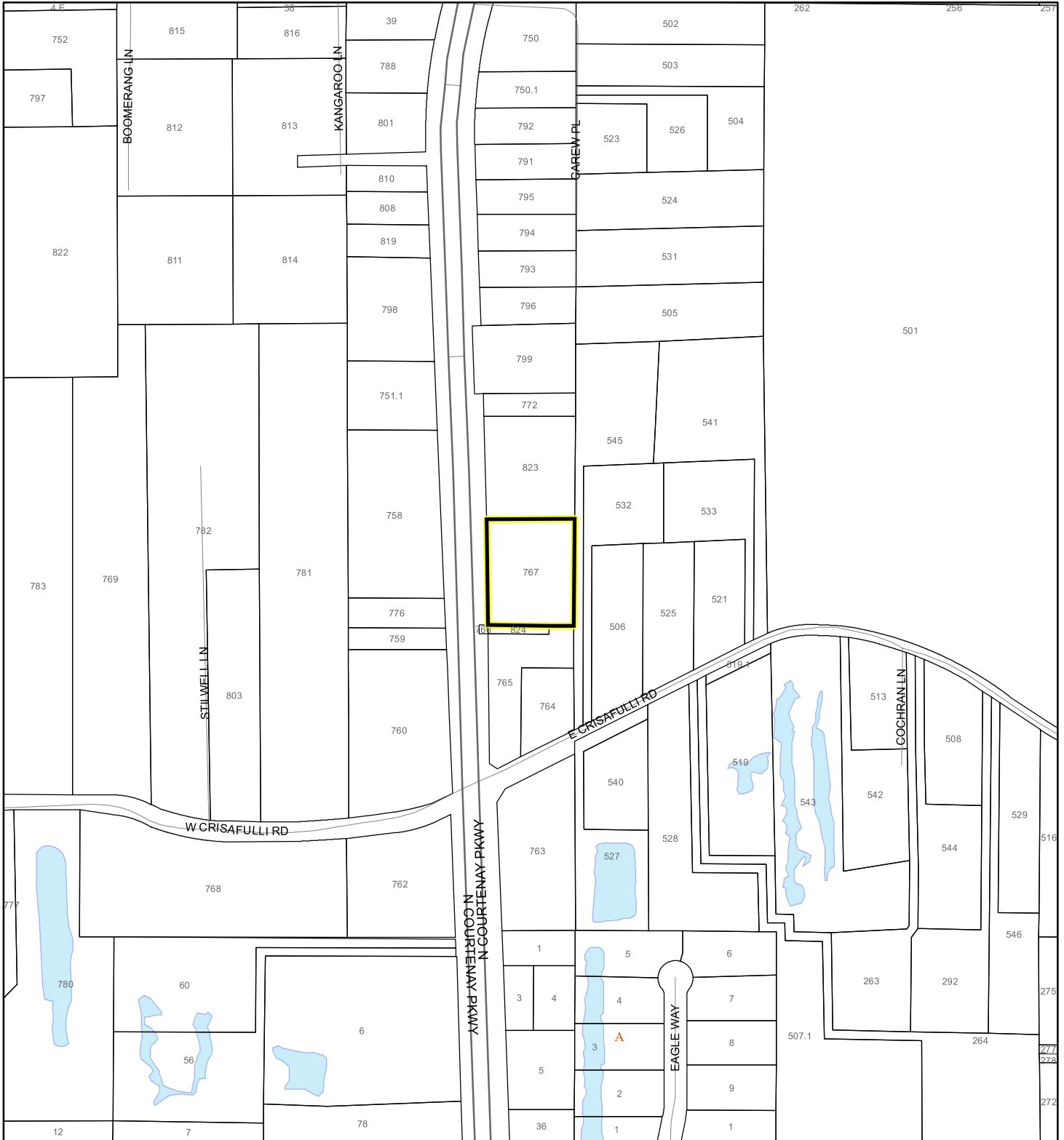
 60 Meters

 All Distances

# EAGLE NESTS MAP

## UNDERWOOD'S EQUIPMENT REPAIR LLC

### 26Z00006



1:4,800 or 1 inch = 400 feet

This map was compiled from recorded documents and does not reflect an actual survey. The Brevard County Board of County Commissioners does not assume responsibility for errors or omissions hereon.

Produced by BoCC - GIS Date: 2/6/2026

Subject Property

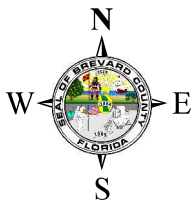
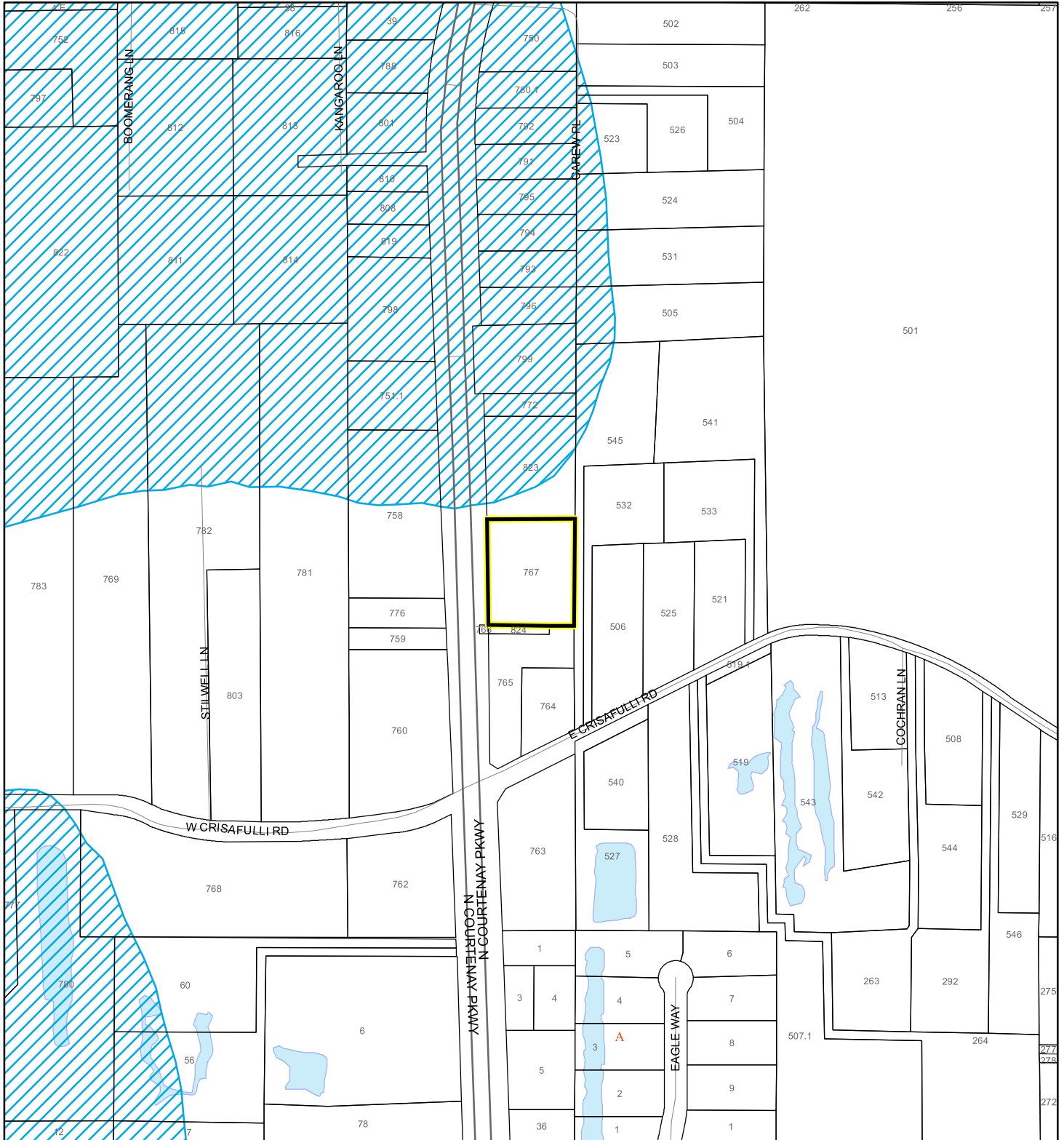
Parcels

Eagle Nests FWS

# SCRUB JAY OCCUPANCY MAP

UNDERWOOD'S EQUIPMENT REPAIR LLC




26Z00006



1:4,800 or 1 inch = 400 feet

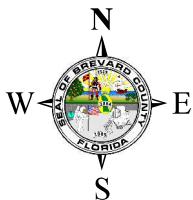
This map was compiled from recorded documents and does not reflect an actual survey. The Brevard County Board of County Commissioners does not assume responsibility for errors or omissions hereon.

Produced by BoCC - GIS Date: 2/6/2026

-  Subject Property
-  Parcels
-  Scrub Jay Occupancy

# SJRWMD FLUCCS UPLAND FORESTS - 4000 Series MAP

UNDERWOOD'S EQUIPMENT REPAIR LLC  
26Z00006



1:4,800 or 1 inch = 400 feet

This map was compiled from recorded documents and does not reflect an actual survey. The Brevard County Board of County Commissioners does not assume responsibility for errors or omissions hereon.

Produced by BoCC - GIS Date: 2/6/2026

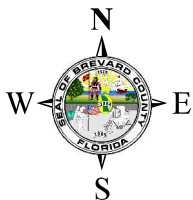
## SJRWMD FLUCCS Upland Forests

- Upland Coniferous Forest - 4100 Series
- Upland Hardwood Forest - 4200 Series
- Upland Mixed Forest - 4300 Series
- Tree Plantations - 4400 Series

Subject Property  Parcels

# RADIUS MAP

UNDERWOOD'S EQUIPMENT REPAIR LLC  
26Z00006




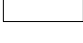


1:4,800 or 1 inch = 400 feet

Buffer Distance: 500 feet

This map was compiled from recorded documents and does not reflect an actual survey. The Brevard County Board of County Commissioners does not assume responsibility for errors or omissions hereon.

Produced by BoCC - GIS Date: 2/6/2026

-  Buffer
-  Subject Property
-  Notify Property
-  Parcels