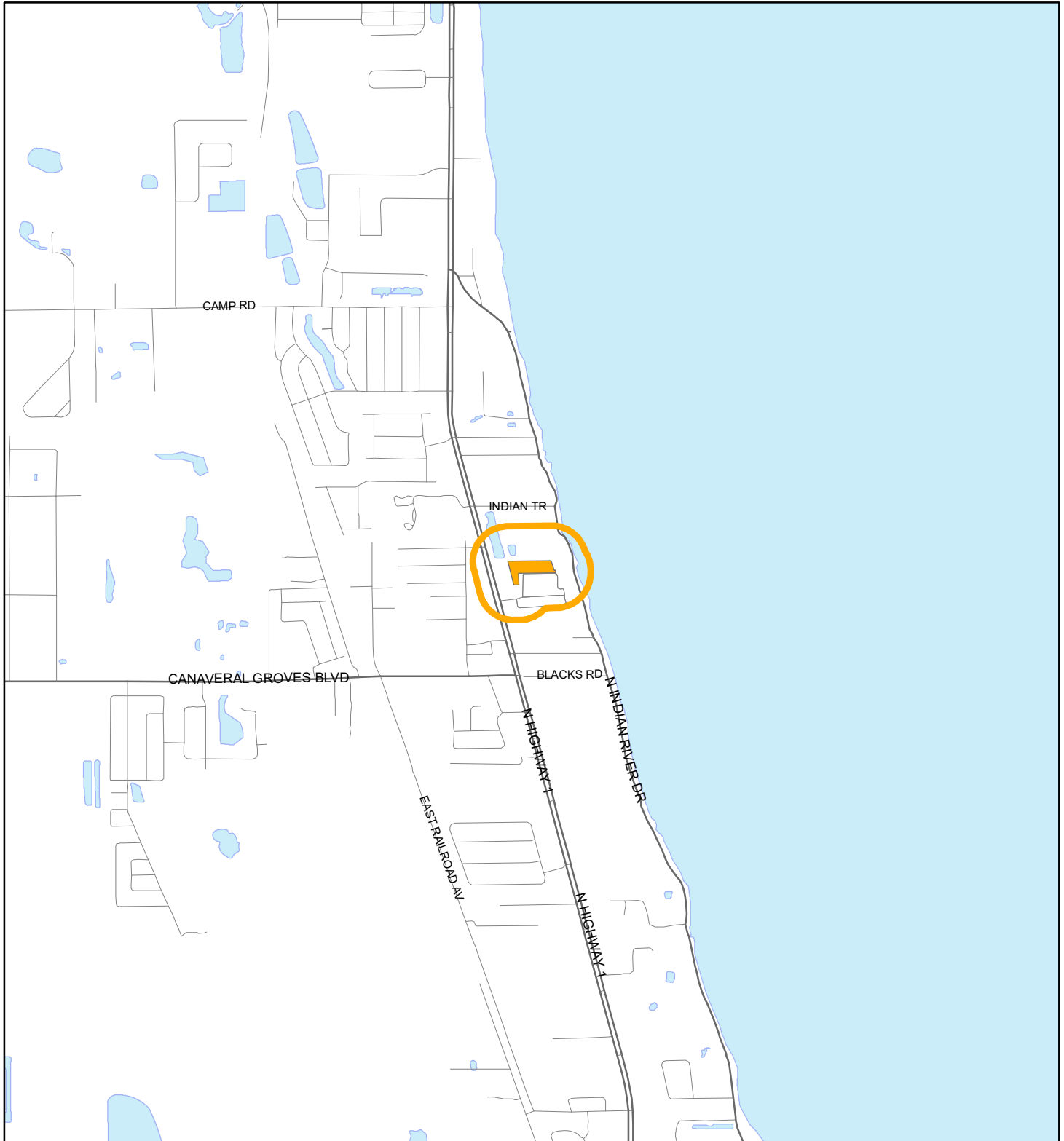


# LOCATION MAP

IBRAHIM & HAROON REALESTATE INC

24Z00023



1:24,000 or 1 inch = 2,000 feet

Buffer Distance: 500 feet

This map was compiled from recorded documents and does not reflect an actual survey. The Brevard County Board of County Commissioners does not assume responsibility for errors or omissions hereon.

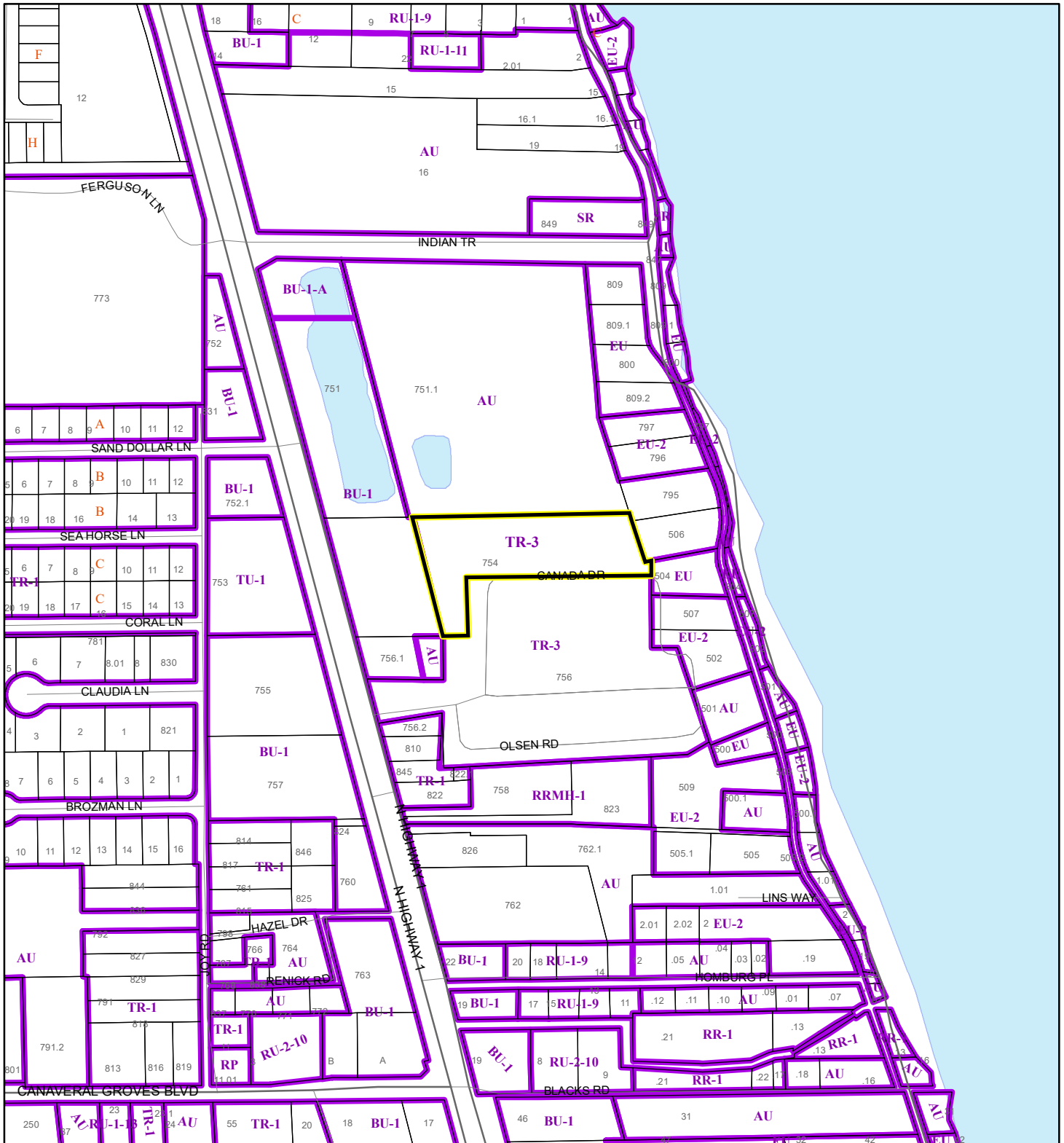
Produced by BoCC - GIS Date: 5/21/2024

Buffer  
Subject Property

# ZONING MAP

IBRAHIM & HAROON REALESTATE INC

24Z00023



1:4,800 or 1 inch = 400 feet

This map was compiled from recorded documents and does not reflect an actual survey. The Brevard County Board of County Commissioners does not assume responsibility for errors or omissions hereon.

Produced by BoCC - GIS Date: 5/21/2024

       Subject Property

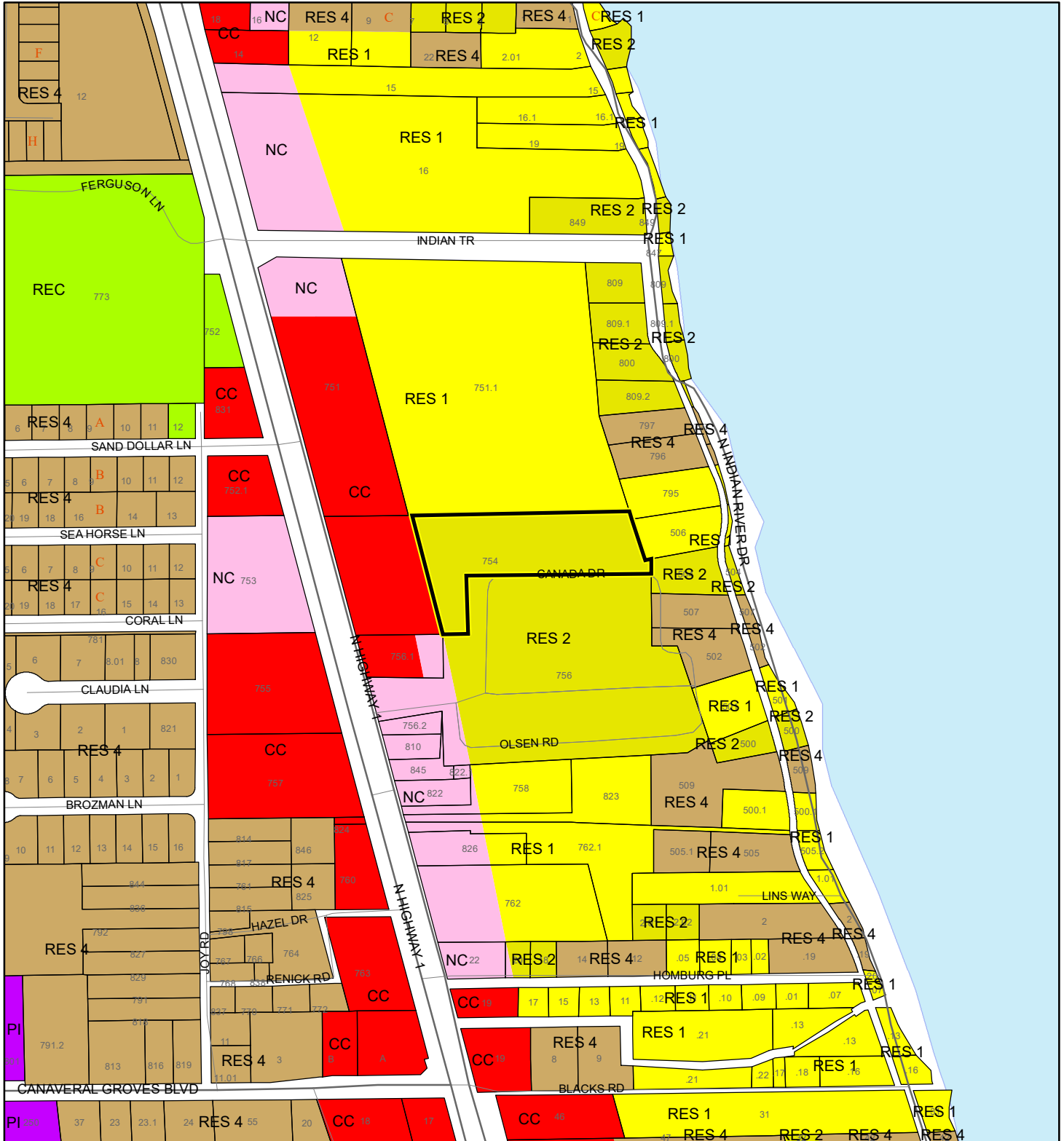
Parcels

Zoning

# FUTURE LAND USE MAP

IBRAHIM & HAROON REALESTATE INC

24Z00023



1:4,800 or 1 inch = 400 feet

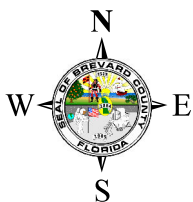
Subject Property  
Parcels

This map was compiled from recorded documents and does not reflect an actual survey. The Brevard County Board of County Commissioners does not assume responsibility for errors or omissions hereon.

Produced by BoCC - GIS Date: 5/21/2024



AERIAL MAP  
IBRAHIM & HAROON REALESTATE INC  
24Z00023





1:2,400 or 1 inch = 200 feet

PHOTO YEAR: 2023

This map was compiled from recorded documents and does not reflect an actual survey. The Brevard County Board of County Commissioners does not assume responsibility for errors or omissions hereon.

Produced by BoCC - GIS Date: 5/21/2024

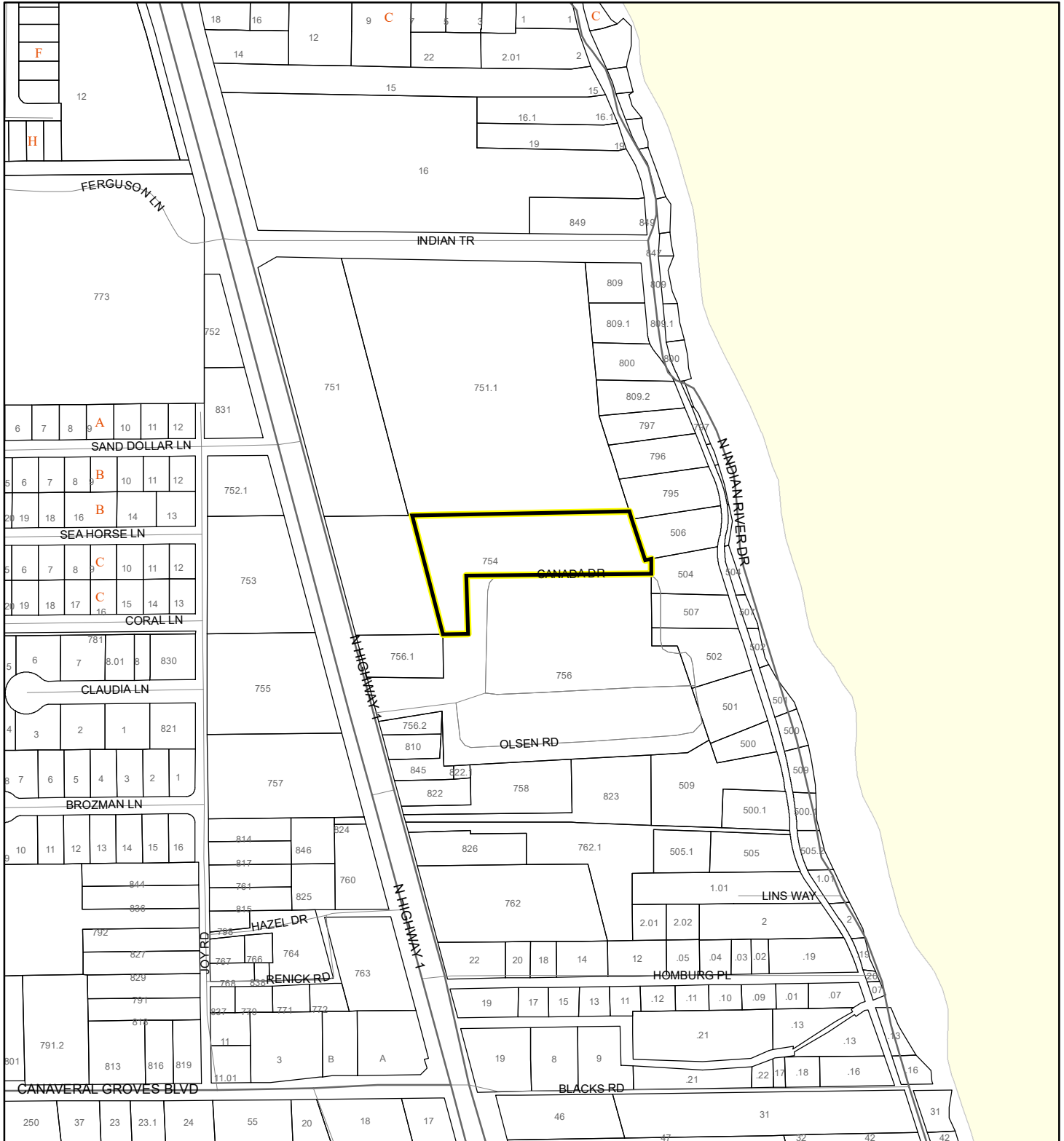
 Subject Property  
 Parcels



# NWI WETLANDS MAP

IBRAHIM & HAROON REALESTATE INC

24Z00023



1:4,800 or 1 inch = 400 feet

This map was compiled from recorded documents and does not reflect an actual survey. The Brevard County Board of County Commissioners does not assume responsibility for errors or omissions hereon.

Produced by BoCC - GIS Date: 5/21/2024

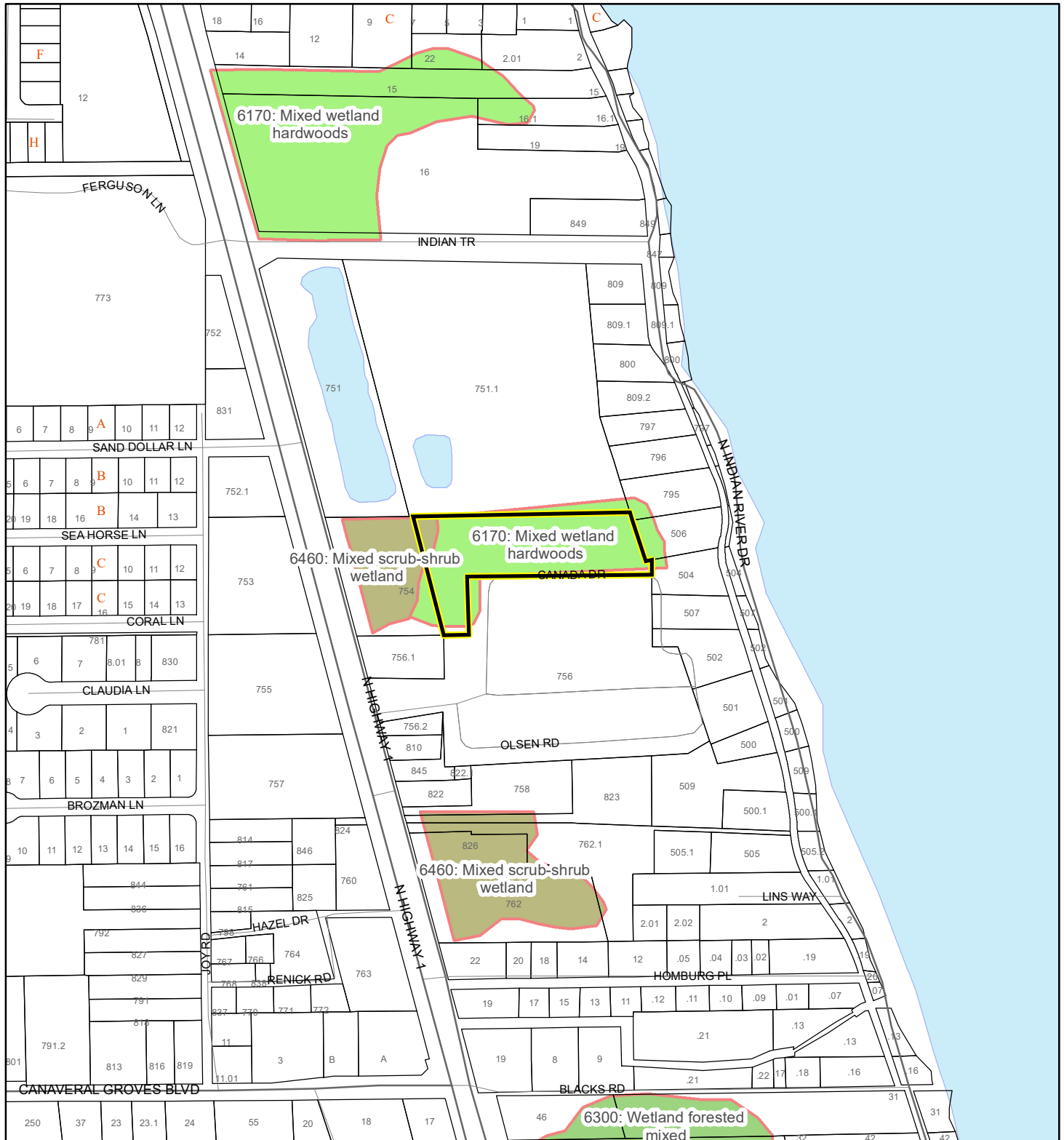
## National Wetlands Inventory (NWI)

Estuarine and Marine Deepwater	Freshwater Pond
Estuarine and Marine Wetland	Lake
Freshwater Emergent Wetland	Other
Freshwater Forested/Shrub Wetland	Riverine
Subject Property	
Parcels	

# SJRWMD FLUCCS WETLANDS - 6000 Series MAP

IBRAHIM & HAROON REALESTATE INC

24Z00023



1:4,800 or 1 inch = 400 feet

This map was compiled from recorded documents and does not reflect an actual survey. The Brevard County Board of County Commissioners does not assume responsibility for errors or omissions hereon.

Produced by BoCC - GIS Date: 5/21/2024

## SJRWMD FLUCCS WETLANDS

- Wetland Hardwood Forests - Series 6100
- Wetland Coniferous Forest - Series 6200
- Wetland Forested Mixed - Series 6300
- Vegetated Non-Forested Wetlands - Series 6400
- Non-Vegetated Wetland - Series 6500

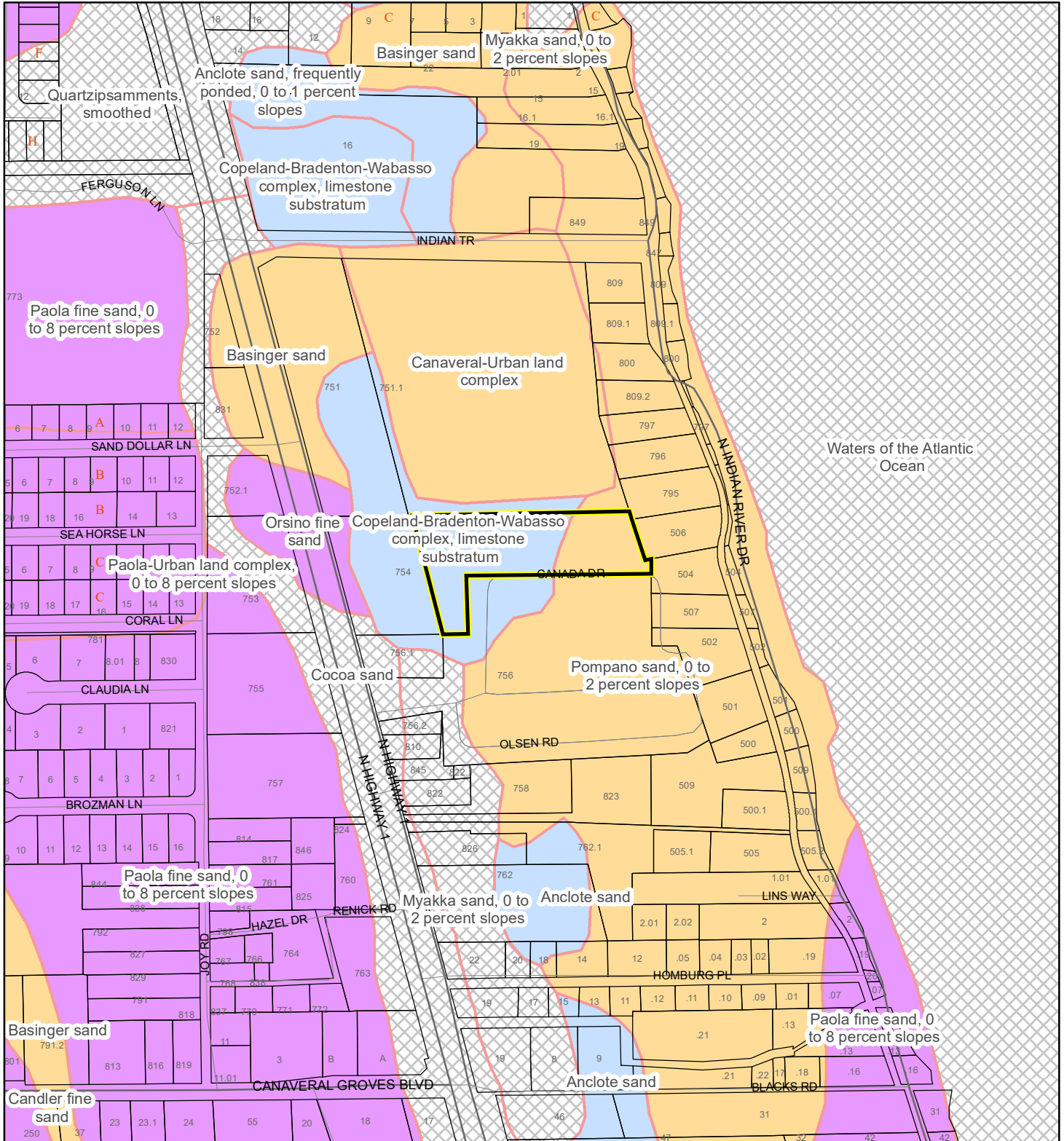
Subject Property

Parcels

# USDA SCSSS SOILS MAP

IBRAHIM & HAROON REALESTATE INC

24Z00023



1:4,800 or 1 inch = 400 feet

This map was compiled from recorded documents and does not reflect an actual survey. The Brevard County Board of County Commissioners does not assume responsibility for errors or omissions hereon.

Produced by BoCC - GIS Date: 5/21/2024

## USDA SCSSS Soils

Aquifer and Hydric

Aquifer

Hydric

None

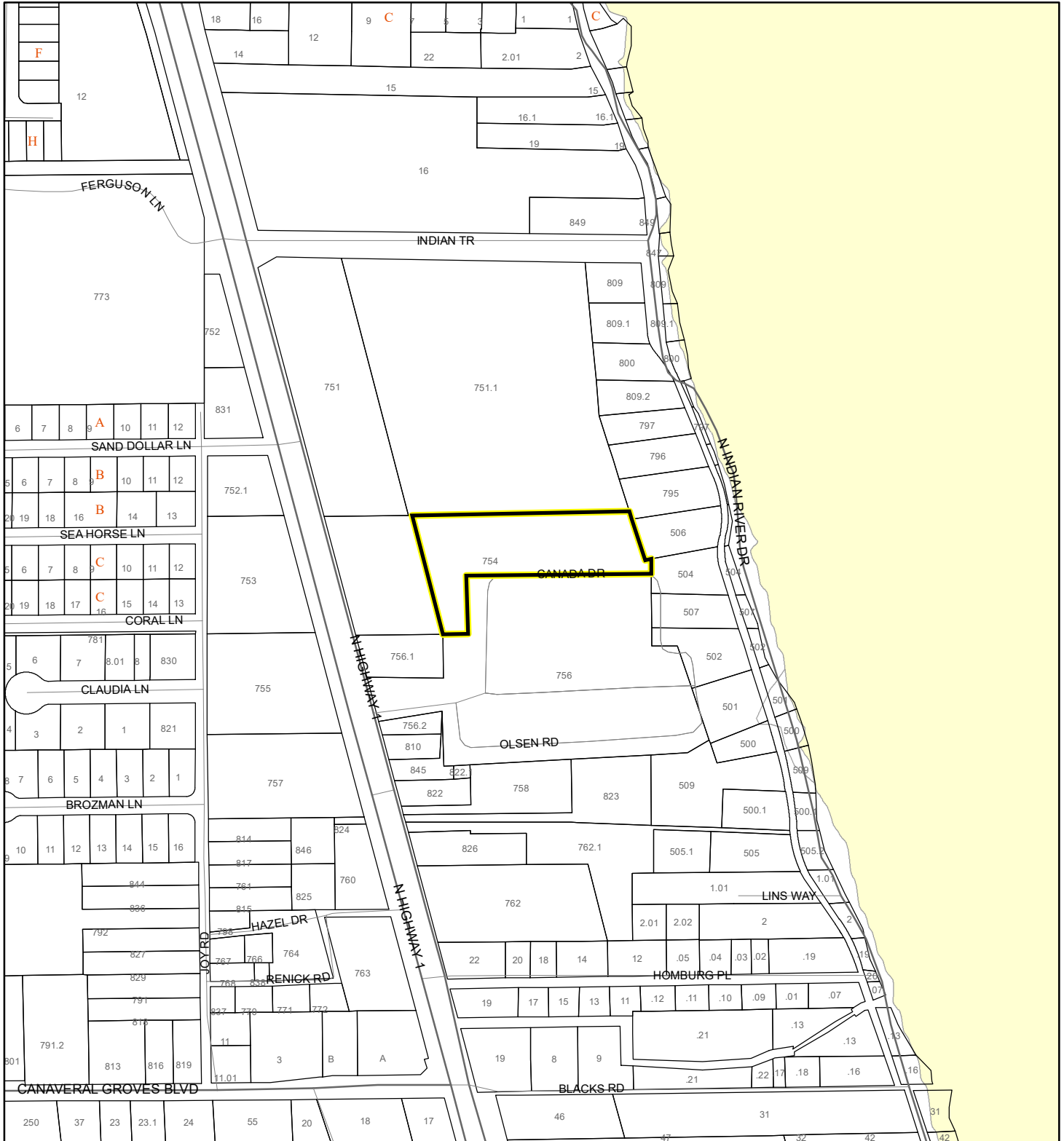
Subject Property

Parcels

# FEMA FLOOD ZONES MAP

IBRAHIM & HAROON REALESTATE INC

24Z00023



1:4,800 or 1 inch = 400 feet

This map was compiled from recorded documents and does not reflect an actual survey. The Brevard County Board of County Commissioners does not assume responsibility for errors or omissions hereon.

Produced by BoCC - GIS Date: 5/21/2024

## FEMA Flood Zones

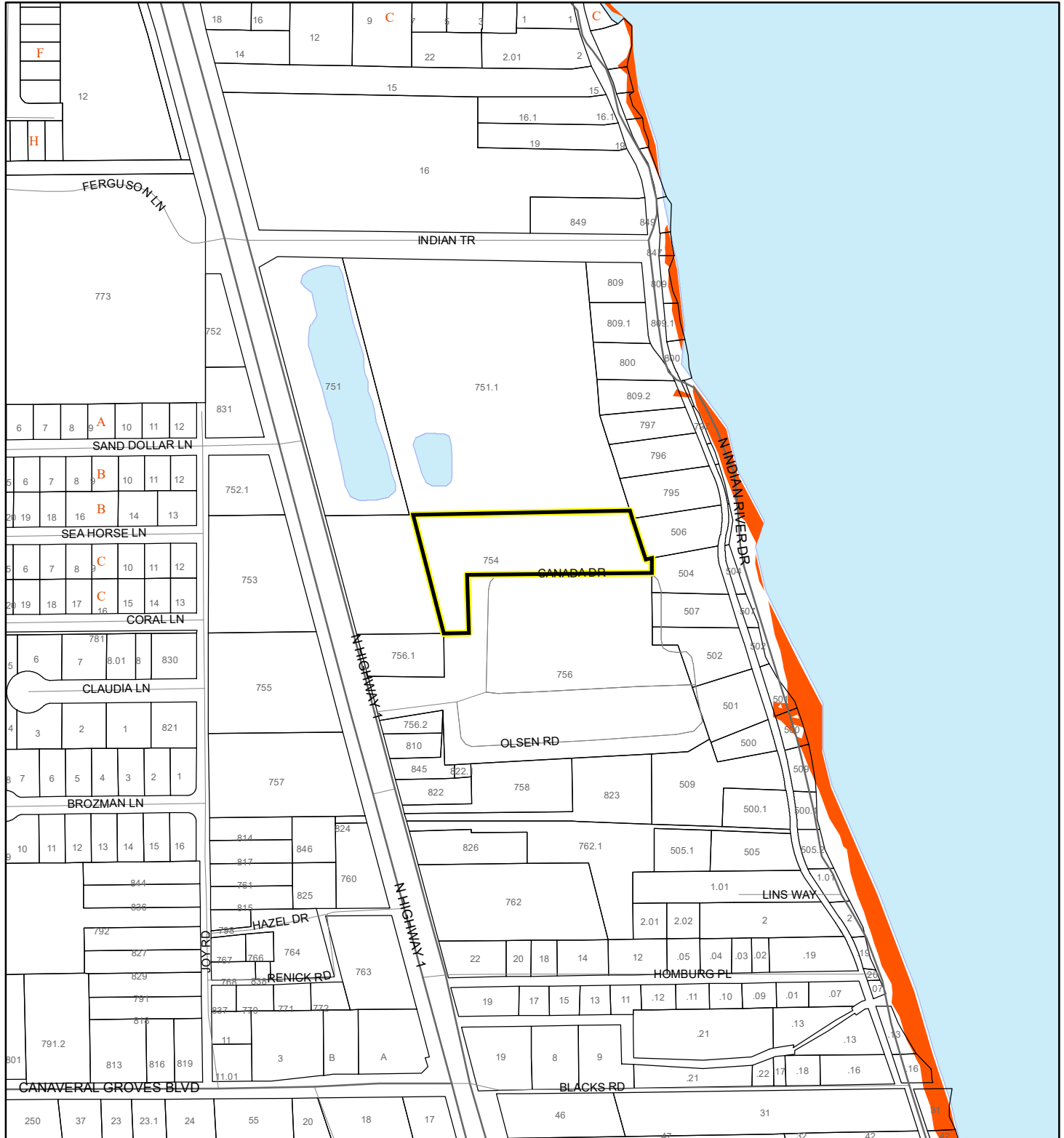
A	AO	X
AE	Open Water	Parcels
AH	VE	
Subject Property		



# COASTAL HIGH HAZARD AREA MAP

IBRAHIM & HAROON REALESTATE INC

24Z00023



1:4,800 or 1 inch = 400 feet


This map was compiled from recorded documents and does not reflect an actual survey. The Brevard County Board of County Commissioners does not assume responsibility for errors or omissions hereon.

Produced by BoCC - GIS Date: 5/21/2024

 Subject Property

 Parcels

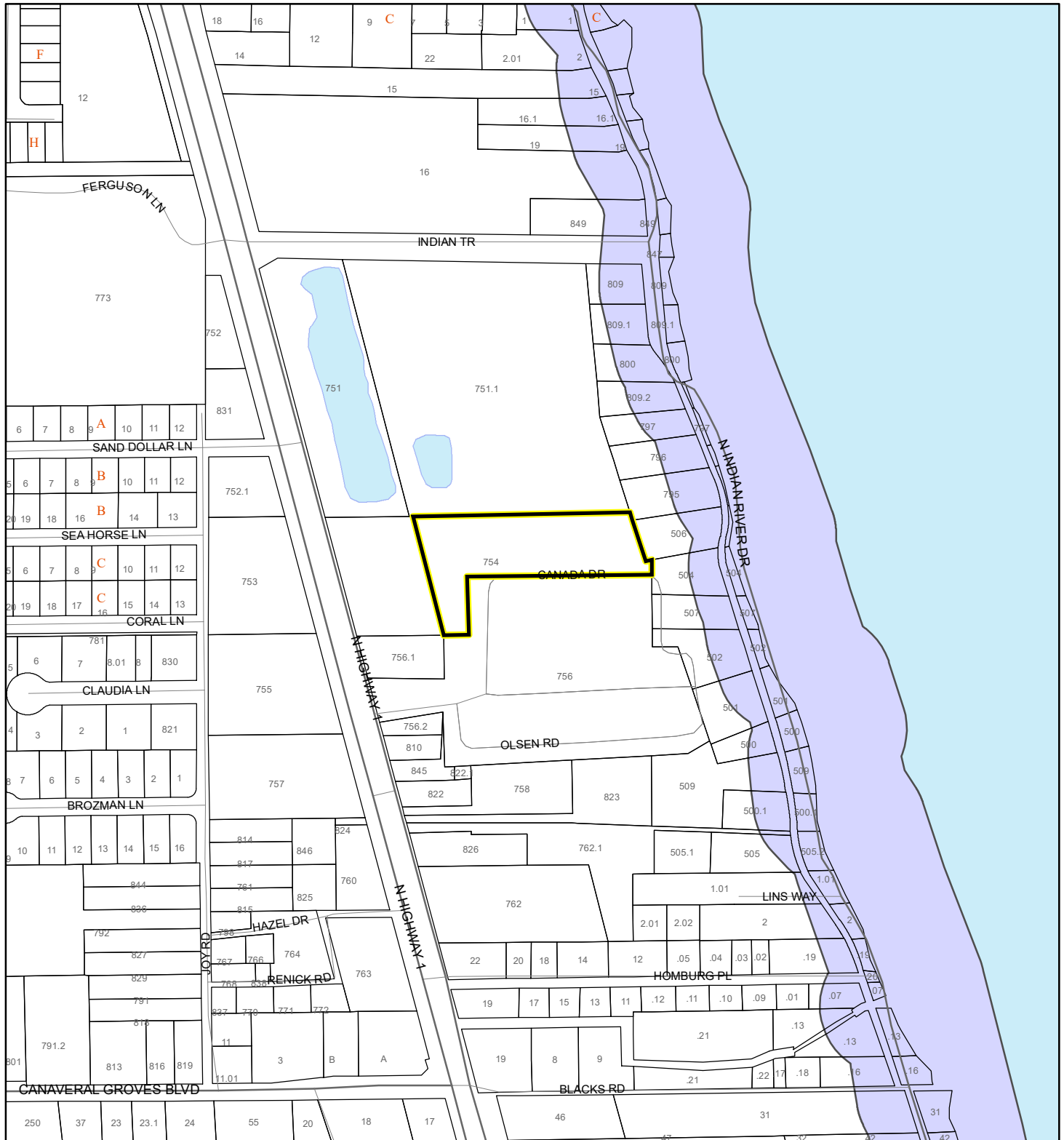
**Coastal High Hazard Area**

 SurgeZoneCat1

# INDIAN RIVER LAGOON SEPTIC OVERLAY MAP

IBRAHIM & HAROON REALESTATE INC

24Z00023



1:4,800 or 1 inch = 400 feet

This map was compiled from recorded documents and does not reflect an actual survey. The Brevard County Board of County Commissioners does not assume responsibility for errors or omissions hereon.

Produced by BoCC - GIS Date: 5/21/2024

 Subject Property

 Parcels

**Septic Overlay**

 40 Meters

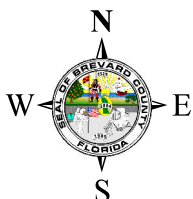
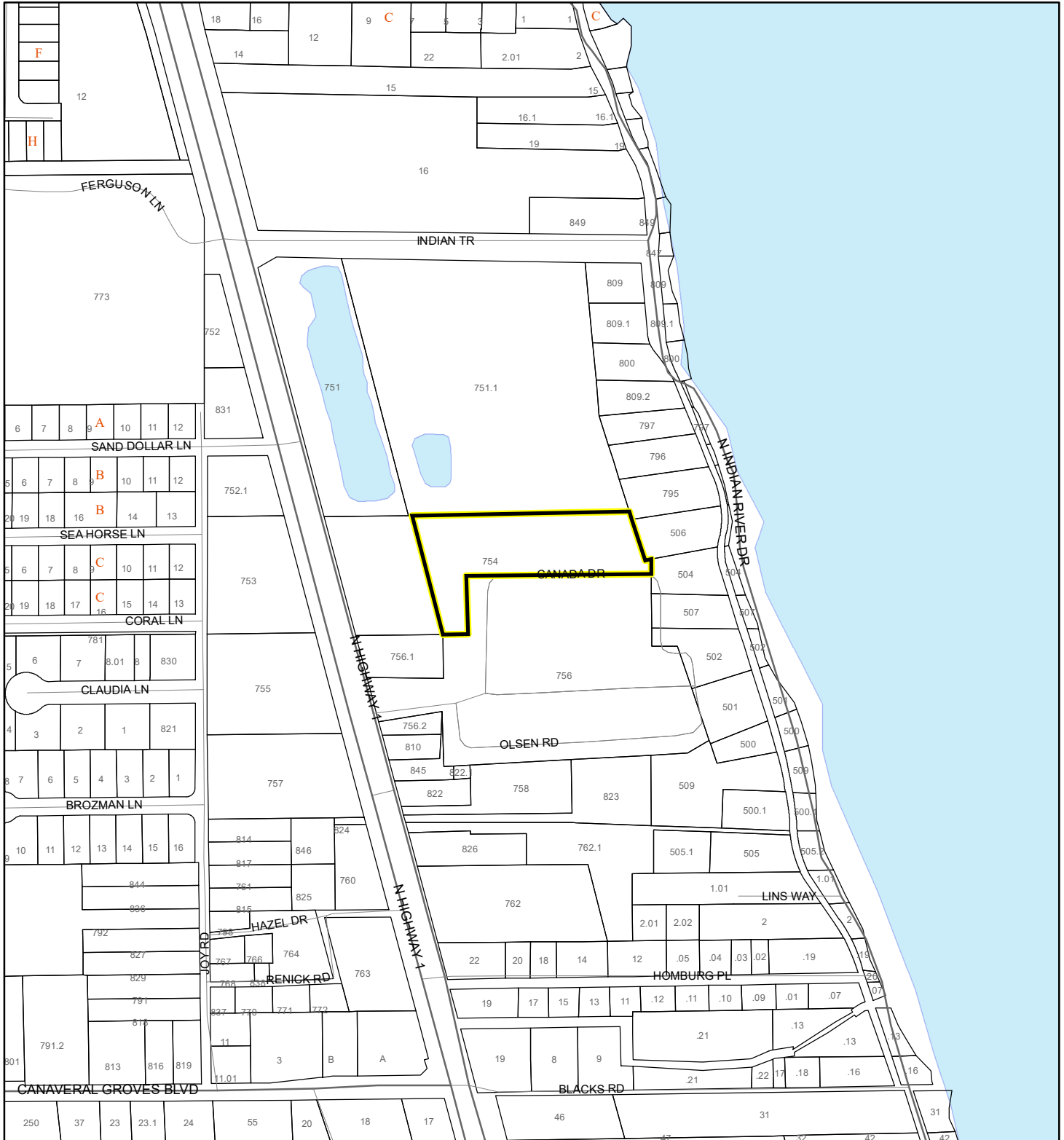
 60 Meters

 All Distances

# EAGLE NESTS MAP

IBRAHIM & HAROON REALESTATE INC

24Z00023



1:4,800 or 1 inch = 400 feet

This map was compiled from recorded documents and does not reflect an actual survey. The Brevard County Board of County Commissioners does not assume responsibility for errors or omissions hereon.

Produced by BoCC - GIS Date: 5/21/2024

 Subject Property

 Parcels

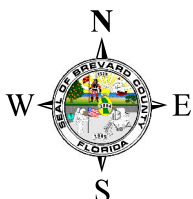
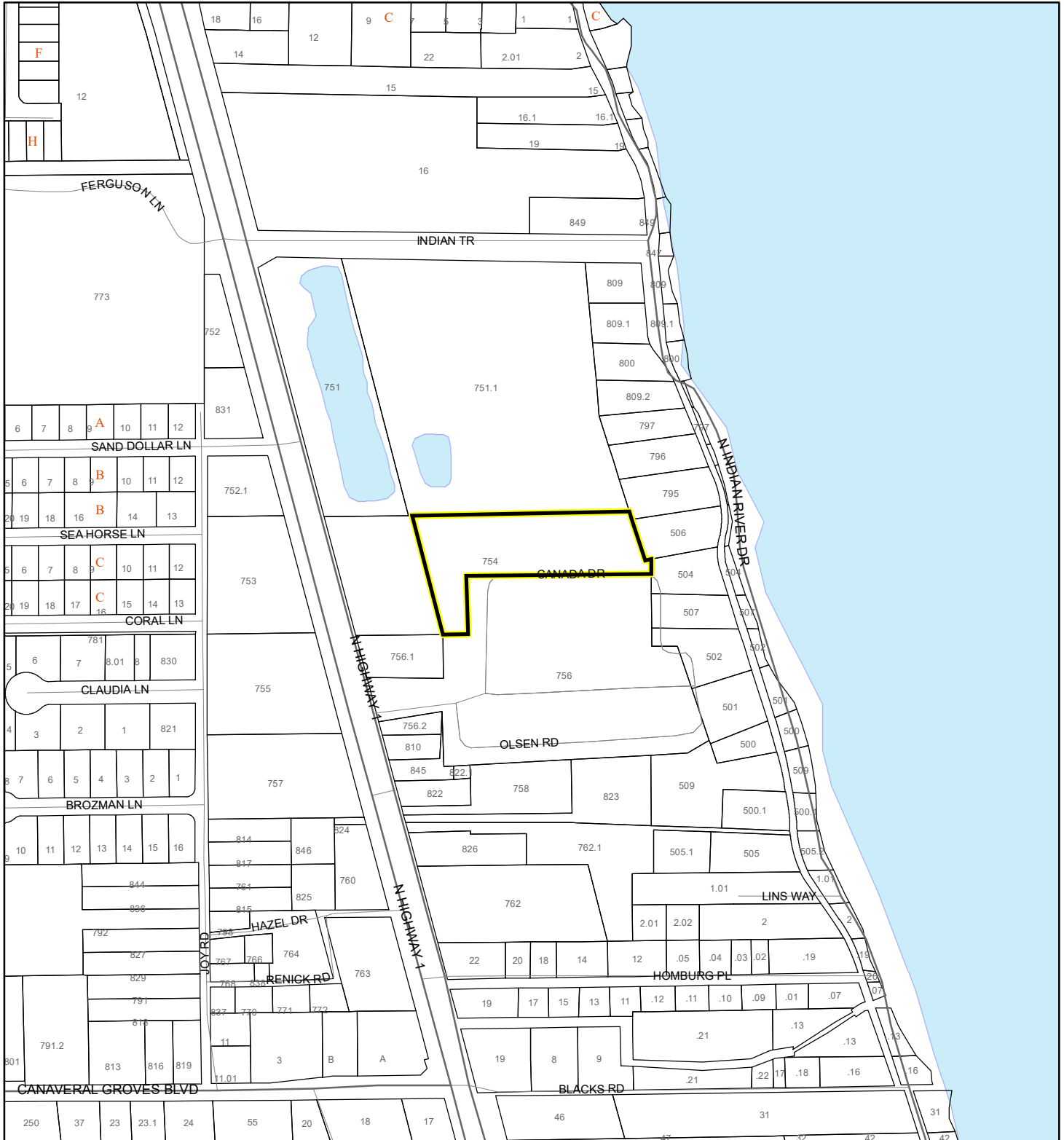
 Eagle Nests  
FWS



# SCRUB JAY OCCUPANCY MAP

IBRAHIM & HAROON REALESTATE INC

24Z00023



1:4,800 or 1 inch = 400 feet

This map was compiled from recorded documents and does not reflect an actual survey. The Brevard County Board of County Commissioners does not assume responsibility for errors or omissions hereon.

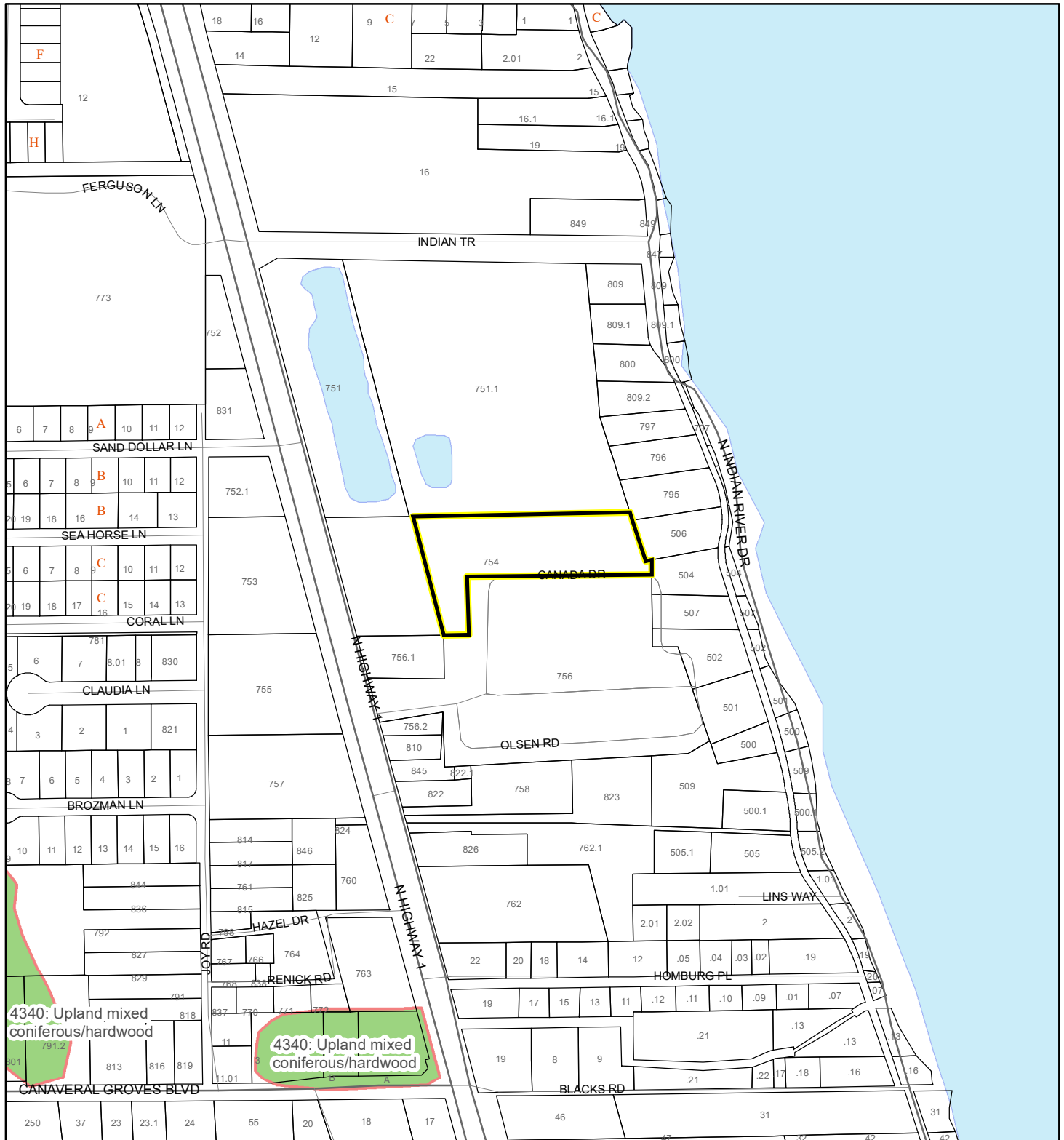
Produced by BoCC - GIS Date: 5/21/2024

- Subject Property
- Parcels
- Scrub Jay Occupancy

# SJRWMD FLUCCS UPLAND FORESTS - 4000 Series MAP

IBRAHIM & HAROON REALESTATE INC

24Z00023



1:4,800 or 1 inch = 400 feet

This map was compiled from recorded documents and does not reflect an actual survey. The Brevard County Board of County Commissioners does not assume responsibility for errors or omissions hereon.

Produced by BoCC - GIS Date: 5/21/2024

## SJRWMD FLUCCS Upland Forests

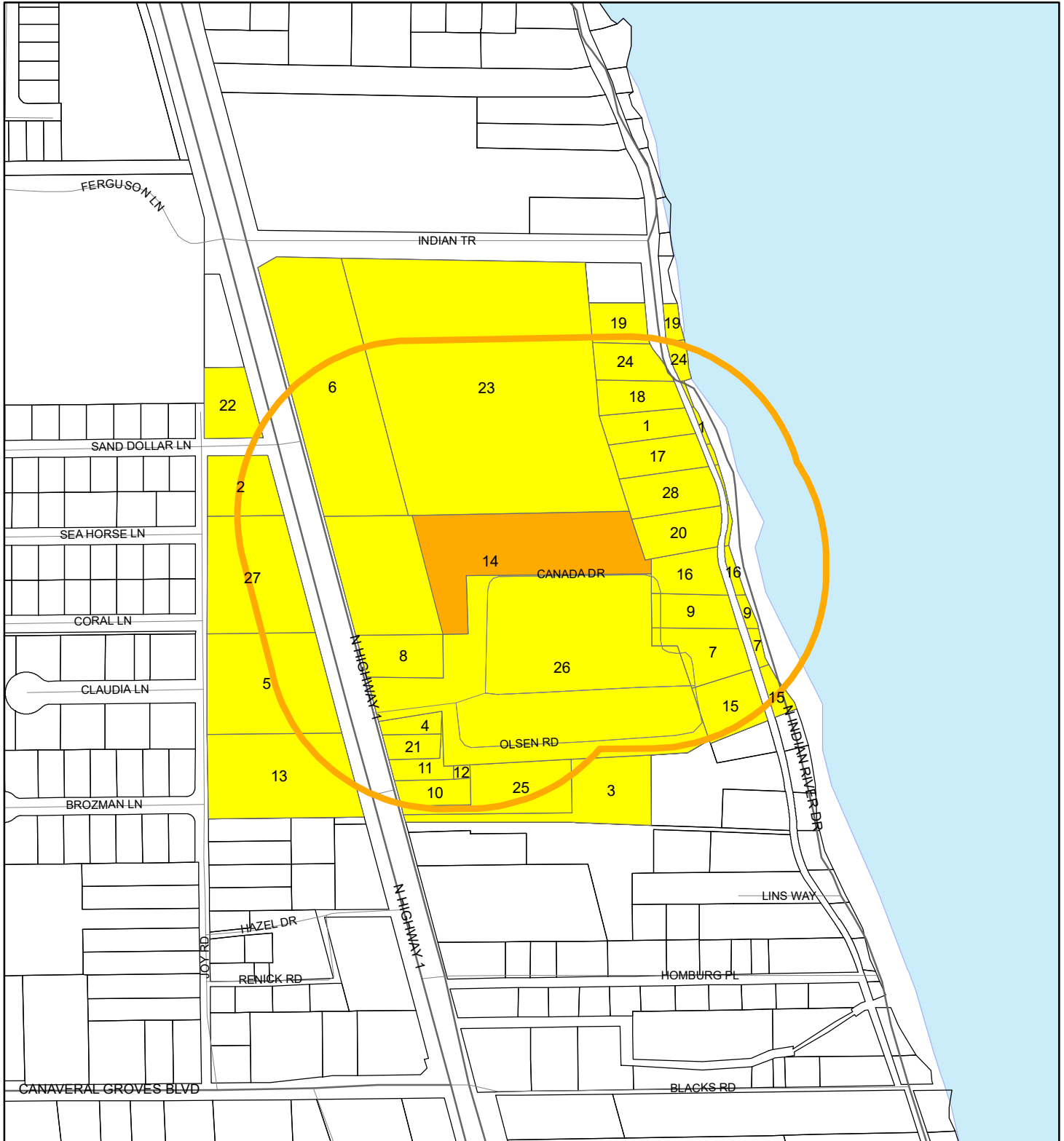
- Upland Coniferous Forest - 4100 Series
- Upland Hardwood Forest - 4200 Series
- Upland Mixed Forest - 4300 Series
- Tree Plantations - 4400 Series

Subject Property  Parcels

# RADIUS MAP

IBRAHIM & HAROON REALESTATE INC

24Z00023



1:4,800 or 1 inch = 400 feet

Buffer Distance: 500 feet

This map was compiled from recorded documents and does not reflect an actual survey. The Brevard County Board of County Commissioners does not assume responsibility for errors or omissions hereon.

Produced by BoCC - GIS Date: 5/21/2024

- Buffer
- Subject Property
- Notify Property
- Parcels