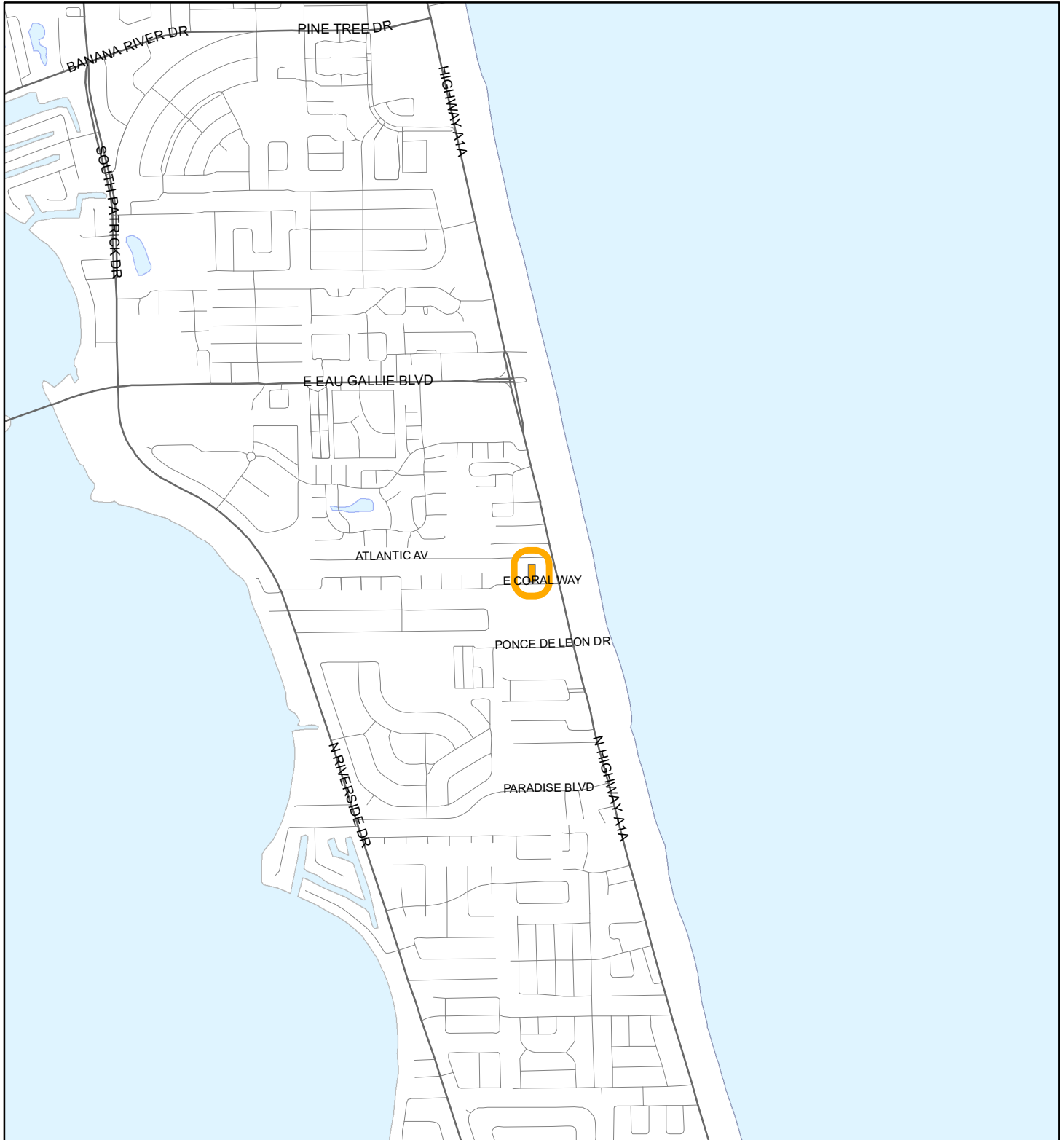


LOCATION MAP

MOYER, BARRY
22V00048



1:24,000 or 1 inch = 2,000 feet

Buffer Distance: 200 feet

This map was compiled from recorded documents and does not reflect an actual survey. The Brevard County Board of County Commissioners does not assume responsibility for errors or omissions hereon.

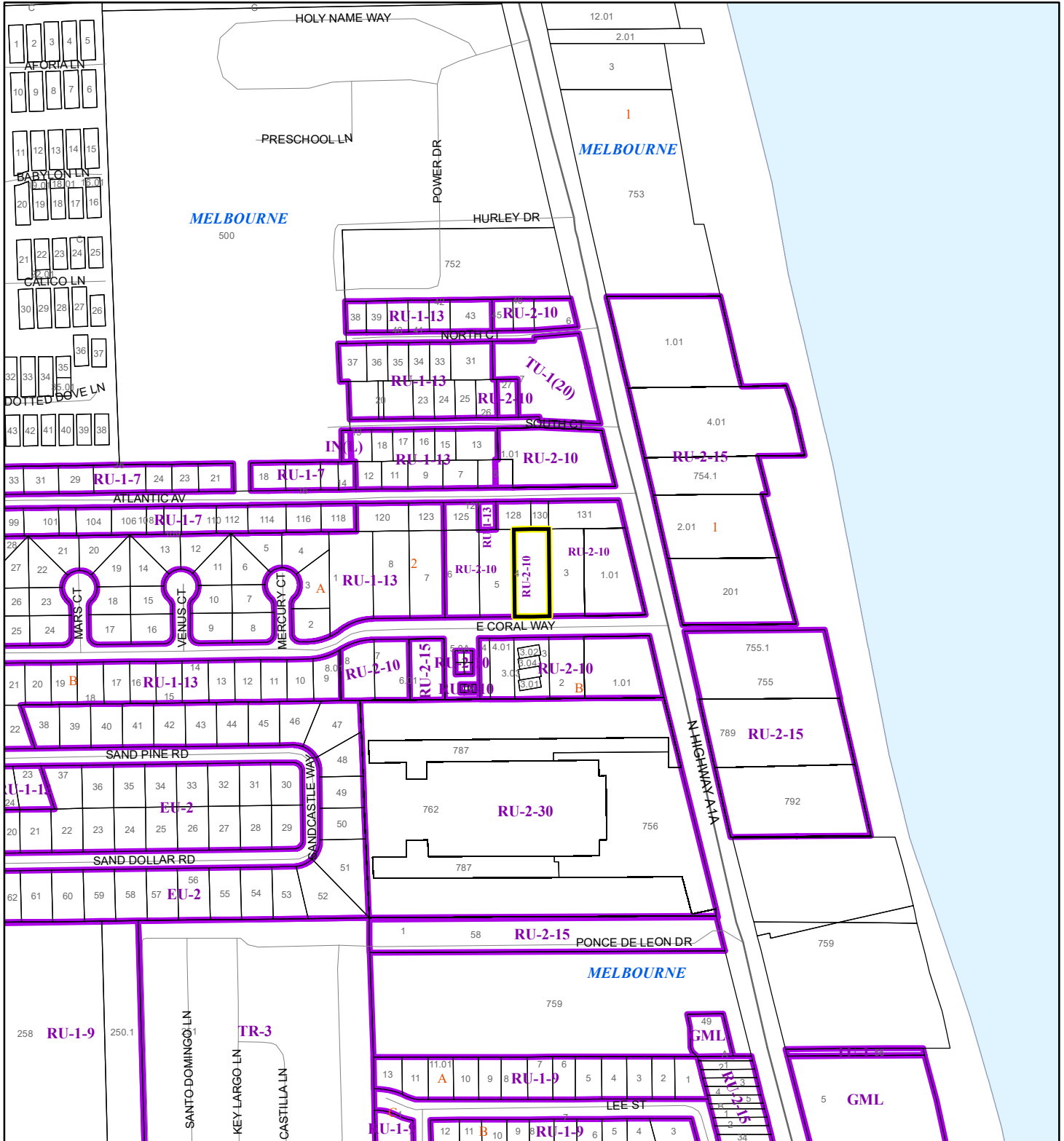
Produced by BoCC - GIS Date: 1/9/2023

Buffer
Subject Property

ZONING MAP

MOYER, BARRY

22V00048



1:4,800 or 1 inch = 400 feet

This map was compiled from recorded documents and does not reflect an actual survey. The Brevard County Board of County Commissioners does not assume responsibility for errors or omissions hereon.

Produced by BoCC - GIS Date: 1/9/2023

Subject Property

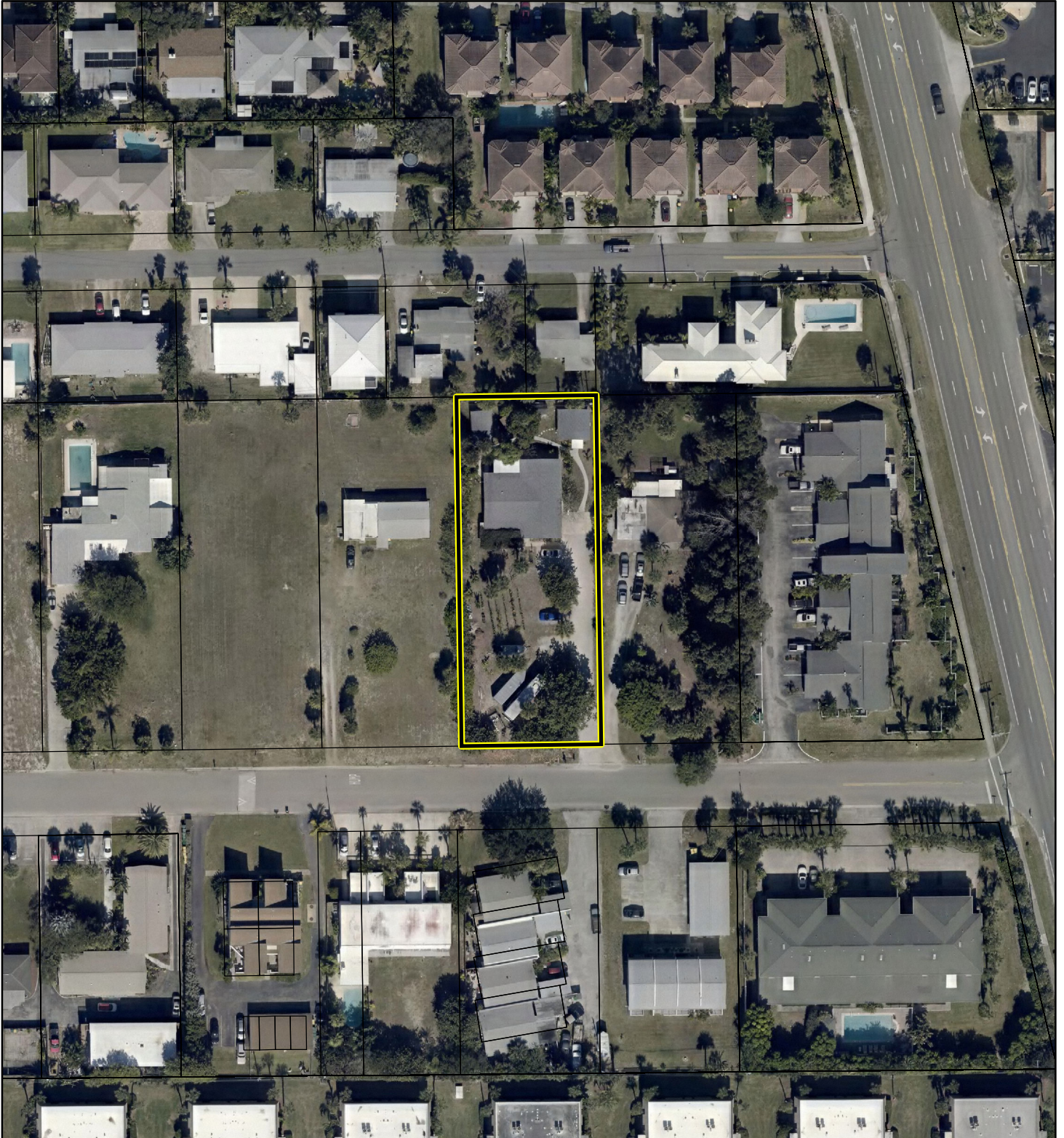
Parcels

Zoning

AERIAL MAP

MOYER, BARRY

22V00048



1:1,200 or 1 inch = 100 feet

PHOTO YEAR: 2022

This map was compiled from recorded documents and does not reflect an actual survey. The Brevard County Board of County Commissioners does not assume responsibility for errors or omissions hereon.

Produced by BoCC - GIS Date: 1/9/2023

 Subject Property

 Parcels