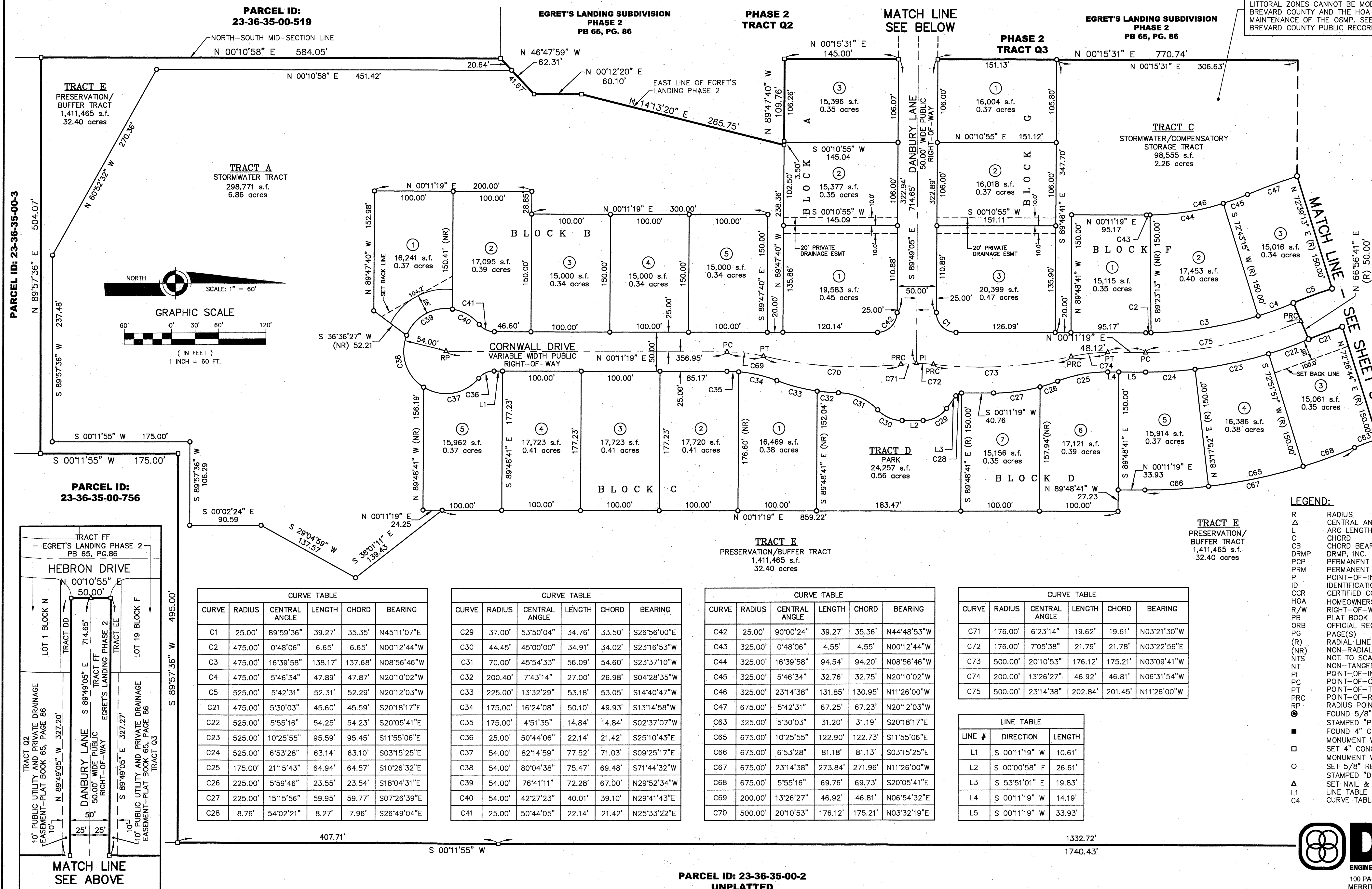


PLAT BOOK _____ PAGE _____
SHEET 2 OF 3
SECTION 35 TWP. 23 S., RANGE 36 E.

BREVARD COUNTY PUBLIC RECORDS

SECTION 35, TOWNSHIP 23 SOUTH, RANGE 36 EAST, BREVARD COUNTY, FLORIDA

NOTE: THIS PLAN INCLUDES AN EXPANSION OF THE VOLUNTARY COMPENSATORY STORAGE PROVIDED AS A PART OF THE OPEN SPACE MANAGEMENT PLAN (OSMP) FOR EGRET'S LANDING SUBDIVISION. THE WELL IS PARTIAL RELOCATION OF THE LITTORAL ZONE, AND IS SUBJECT TO THE PROVISIONS AND CONDITIONS OF THE APPROVED OSMP FOR EGRET'S LANDING. PROPOSED USES AND LITTORAL ZONES CANNOT BE MODIFIED UNLESS APPROVED BY BREVARD COUNTY AND THE HOA RESPONSIBLE FOR OPERATION AND MAINTENANCE OF THE OSMP. SEE SURVEY BOOK , PAGE BREVARD COUNTY PUBLIC RECORDS.



NOTE: THIS PLAN INCLUDES AN EXPANSION OF THE VOLUNTARY COMPENSATORY STORAGE PROVIDED AS A PART OF THE OPEN SPACE MANAGEMENT PLAN (OSMP) FOR EGRET'S LANDING SUBDIVISION, AS WELL AS PARTIAL RELOCATION OF THE LITTORAL ZONE, AND IS SUBJECT TO THE PROVISIONS AND CONDITIONS OF THE APPROVED OSMP FOR EGRET'S LANDING. PROPOSED USES AND LITTORAL ZONES CANNOT BE MODIFIED UNLESS APPROVED BY BREVARD COUNTY AND THE HOA RESPONSIBLE FOR OPERATION AND MAINTENANCE OF THE OSMP. SEE SURVEY BOOK _____ PAGE _____ BREVARD COUNTY PUBLIC RECORDS.

EGRET'S RESERVE

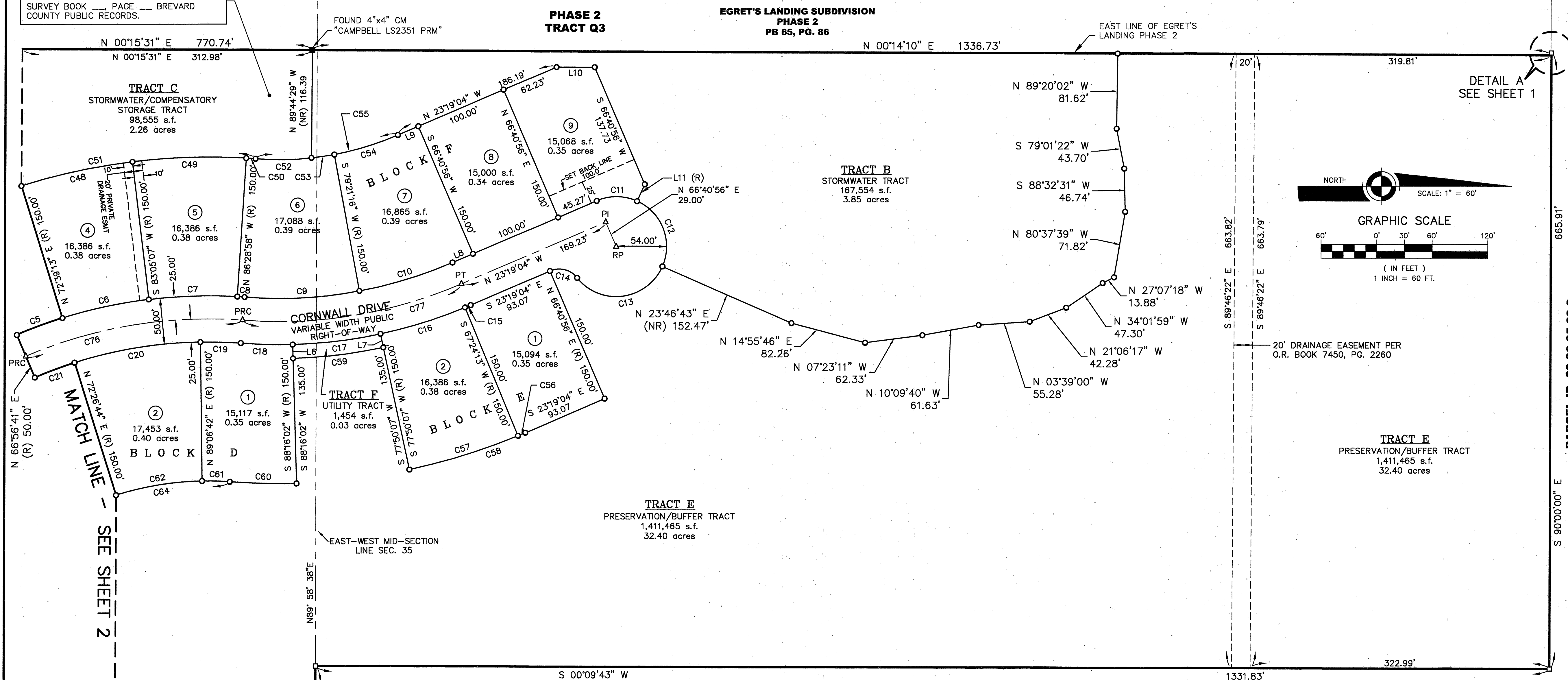
A REPLAT OF TRACT FF EGRET'S LANDING PHASE 2 AS RECORDED IN PLAT BOOK 65, PAGE 86

BREVARD COUNTY PUBLIC RECORDS

SECTION 35, TOWNSHIP 23 SOUTH, RANGE 36 EAST, BREVARD COUNTY, FLORIDA

PLAT BOOK _____ PAGE _____

SHEET 3 OF 3
SECTION 35 TWP. 23 S., RANGE 36 E.



TRACT E
PRESERVATION/BUFFER TRACT
1,411,465 s.f.
32.40 acres

PARCEL ID: 23-36-35-00-2
UNPLATTED

PARCEL ID: 23-36-35-00-2
UNPLATTED

CURVE TABLE					
CURVE	RADIUS	CENTRAL ANGLE	LENGTH	CHORD	BEARING
C5	525.00'	5'42'31"	52.31'	52.29'	N20'12'03"W
C6	525.00'	10'25'55"	95.59'	95.45'	N12'07'50"W
C7	525.00'	10'25'55"	95.59'	95.45'	N01'41'56"W
C8	525.00'	0'51'44"	7.90'	7.90'	N03'56'54"E
C9	475.00'	15'01'29"	124.56'	124.20'	N03'07'59"W
C10	475.00'	12'40'21"	105.06'	104.84'	N16'58'54"W
C11	54.00'	47'41'47"	44.95'	43.67'	N00'31'49"E
C12	54.00'	88'51'37"	83.75'	75.60'	N68'48'31"E
C13	54.00'	118'01'39"	111.24'	92.59'	S07'44'51"E
C14	25.00'	74'35'03"	32.54'	30.29'	S13'58'27"W
C15	525.00'	0'43'17"	6.61'	6.61'	S22'57'26"E
C16	525.00'	10'25'55"	95.59'	95.45'	S17'22'50"E
C17	525.00'	10'25'55"	95.59'	95.45'	S06'56'55"E
C18	525.00'	6'06'44"	56.00'	55.98'	S01'19'24"W
C19	475.00'	5'16'03"	43.67'	43.65'	S01'44'44"W
C20	475.00'	16'39'58"	138.17'	137.68'	S09'13'17"E

CURVE TABLE					
CURVE	RADIUS	CENTRAL ANGLE	LENGTH	CHORD	BEARING
C21	475.00'	5'30'03"	45.60'	45.59'	S20'18'17"E
C48	675.00'	10'25'55"	122.90'	122.73'	N12'07'50"W
C49	675.00'	10'25'55"	122.90'	122.73'	N01'41'56"W
C50	675.00'	0'51'44"	10.16'	10.16'	N03'56'54"E
C51	675.00'	27'26'04"	323.21'	320.13'	N09'20'17"W
C52	325.00'	10'39'08"	60.42'	60.34'	N00'56'49"W
C53	325.00'	4'22'21"	24.80'	24.80'	N08'27'33"W
C54	325.00'	12'40'21"	71.88'	71.74'	N16'58'54"W
C55	325.00'	17'02'42"	96.68'	96.33'	N14'47'44"W
C56	675.00'	0'43'17"	8.50'	8.50'	S22'57'26"E
C57	675.00'	10'25'55"	122.90'	122.73'	S17'22'50"E
C58	675.00'	11'09'12"	131.40'	131.19'	N17'44'29"W
C59	540.00'	10'25'55"	98.32'	98.18'	N06'56'55"W
C60	675.00'	6'06'44"	72.01'	71.97'	S01'19'24"W
C61	325.00'	5'16'03"	29.88'	29.87'	S01'44'44"W
C62	325.00'	16'39'58"	94.54'	94.20'	S09'13'17"E

CURVE TABLE					
CURVE	RADIUS	CENTRAL ANGLE	LENGTH	CHORD	BEARING
C64	325.00'	27'26'04"	155.62'	154.14'	S09'20'17"E
C76	500.00'	27'26'04"	239.41'	237.13'	N09'20'17"W
C77	500.00'	27'41'50"	241.70'	239.36'	N09'28'09"W

LINE TABLE		
LINE #	DIRECTION	LENGTH
L6	N 88'16'02" E	15.00'
L7	S 77'50'07" W	15.00'
L8	N 23'19'04" W	23.96'
L9	N 23'19'04" W	23.96'
L10	S 00'14'10" W	41.21'
L11	N 65'37'18" W	20.00'

PARCEL ID: 23-36-35-00-2
UNPLATTED

ABBREVIATIONS:

R RADIUS
Δ CENTRAL ANGLE
L ARC LENGTH
C CHORD
CB CHORD BEARING
DRMP DRMP, INC.
PCP PERMANENT CONTROL POINT
PRM PERMANENT REFERENCE MONUMENT
PI POINT-OF-INTERSECTION
ID IDENTIFICATION
CCR CERTIFIED CORNER RECORD
HOA HOMEOWNERS' ASSOCIATION
R/W RIGHT-OF-WAY
PB PLAT BOOK
ORB OFFICIAL RECORDS BOOK
PG PAGE(S)
(R) RADIAL LINE
(NR) NON-RADIAL LINE
NTS NOT TO SCALE
NT NON-TANGENT
PI POINT-OF-INTERSECTION
PC POINT-OF-CURVATURE
PT POINT-OF-TANGENCY
PRC POINT-OF-REVERSE CURVATURE
RP RADIUS POINT

LEGEND:

● FOUND 5/8" REBAR WITH SURVEYOR'S CAP
STAMPED "PRM LS2351"
■ FOUND 4" CONCRETE PERMANENT REFERENCE
MONUMENT WITH DISK "CAMPBELL LS2351 PRM"
□ SET 4" CONCRETE PERMANENT REFERENCE
MONUMENT WITH DISK "DRMP LB2648 PRM"
○ SET 5/8" REBAR WITH SURVEYOR'S CAP
STAMPED "DRMP LB2648"
Δ SET NAIL & DISK "DRMP LB2648 PCP"
L1 LINE TABLE NUMBER
C4 CURVE TABLE NUMBER

DRMP
ENGINEERS • SURVEYORS • PLANNERS • SCIENTISTS
100 PARNELL STREET • SUITE A
MERRITT ISLAND, FLORIDA 32953
PHONE NO.: (321) 453-0010
DRMP, INC. CERTIFICATE NO.: 2648
J. BARRY CABANISS PLS NO. 4524