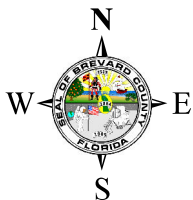
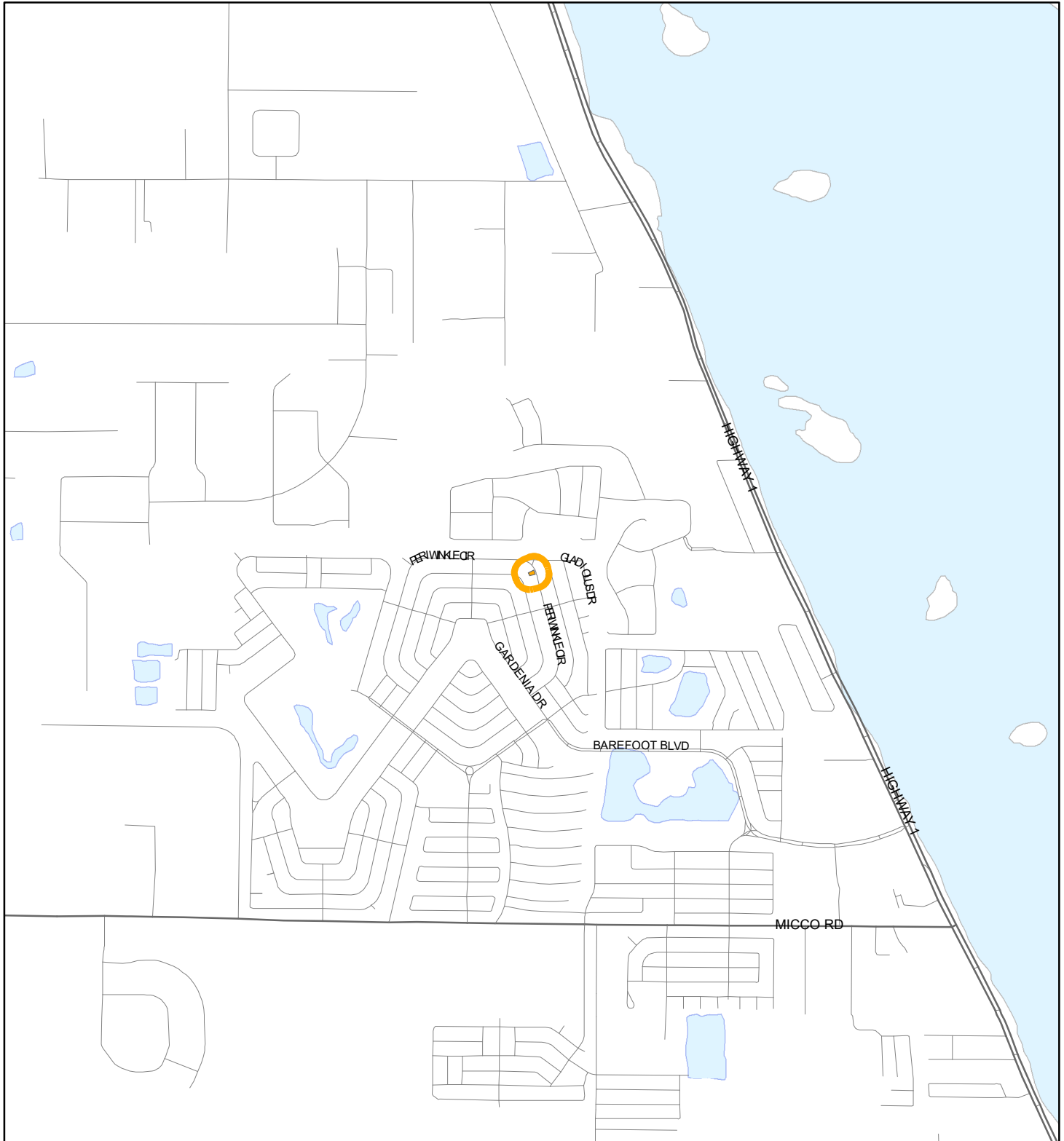


LOCATION MAP

JILLSON, CHARLOTTE A

22V00027





1:24,000 or 1 inch = 2,000 feet

Buffer Distance: 200 feet

This map was compiled from recorded documents and does not reflect an actual survey. The Brevard County Board of County Commissioners does not assume responsibility for errors or omissions hereon.

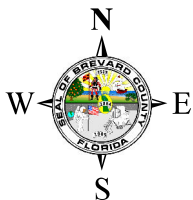
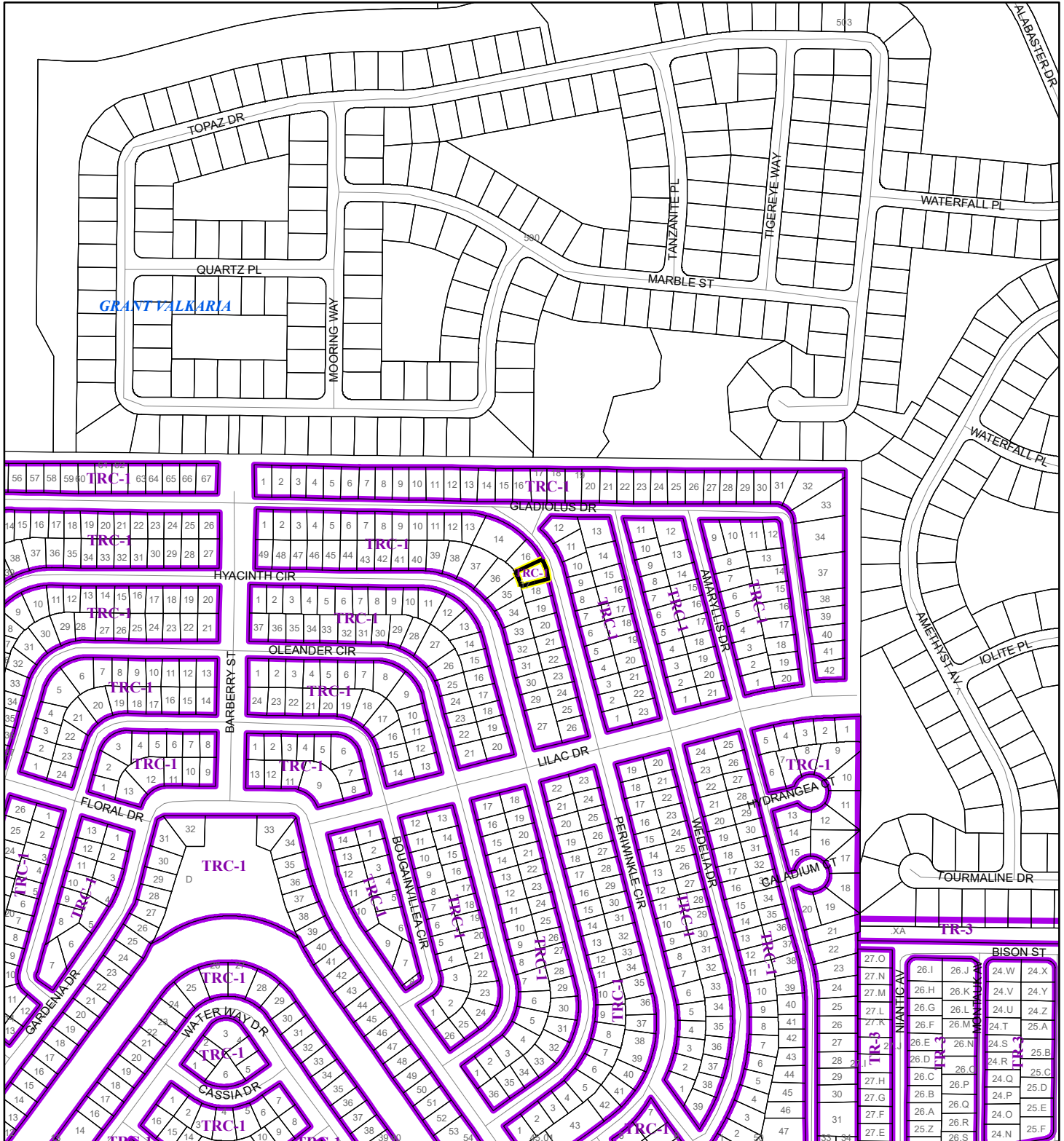
Produced by BoCC - GIS Date: 7/25/2022

 Buffer
 Subject Property

ZONING MAP

JILLSON, CHARLOTTE A


22V00027



1:4,800 or 1 inch = 400 feet

This map was compiled from recorded documents and does not reflect an actual survey. The Brevard County Board of County Commissioners does not assume responsibility for errors or omissions hereon.

Produced by BoCC - GIS Date: 7/25/2022

 Subject Property

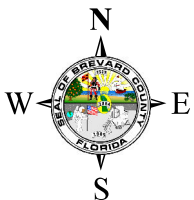
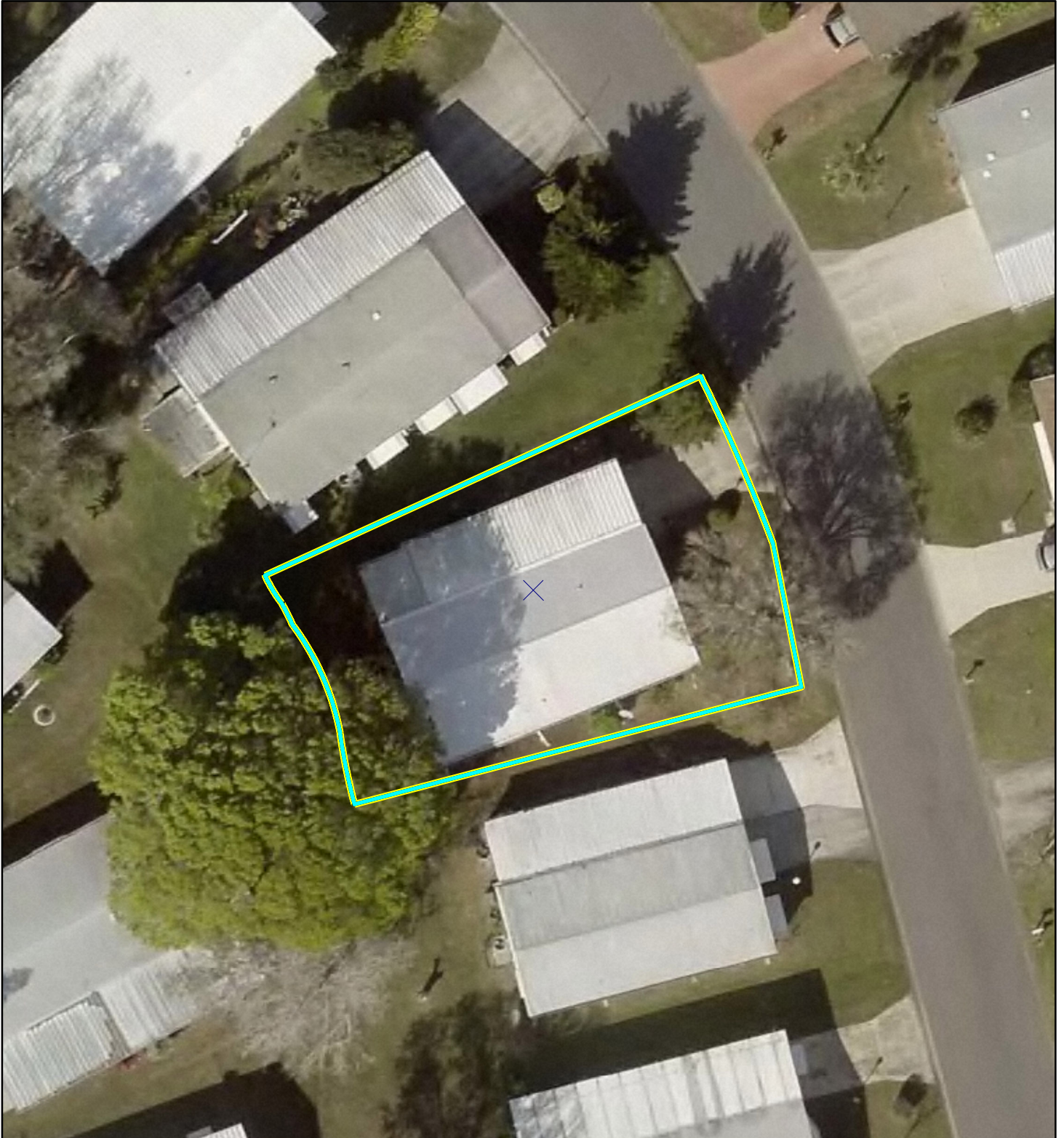
 Parcels

 Zoning

AERIAL MAP

JILLSON, CHARLOTTE A

22V00027




1:300 or 1 inch = 25 feet

PHOTO YEAR: 2021

This map was compiled from recorded documents and does not reflect an actual survey. The Brevard County Board of County Commissioners does not assume responsibility for errors or omissions hereon.

Produced by BoCC - GIS Date: 7/25/2022

 Subject Property

 Parcels