



**\*PROPOSED #20BC21103**

LEGAL DESCRIPTION  
LOT 31, BLOCK L, DIANA SHORES UNIT NO. 6, ACCORDING TO THE  
PLAT THEREOF AS RECORDED IN PLAT BOOK 21, PAGE 34,  
PUBLIC RECORDS OF BREVARD COUNTY, FLORIDA.

**\*Zoning Division**  
**APPROVED**  
By paul body on Dec 14, 2020

**\*AS-BUILT SURVEY REQUIRED**

Utility Controls MUST remain in place  
during construction

**REVISED**  
5/10/23

**REVISED**  
1/17/20

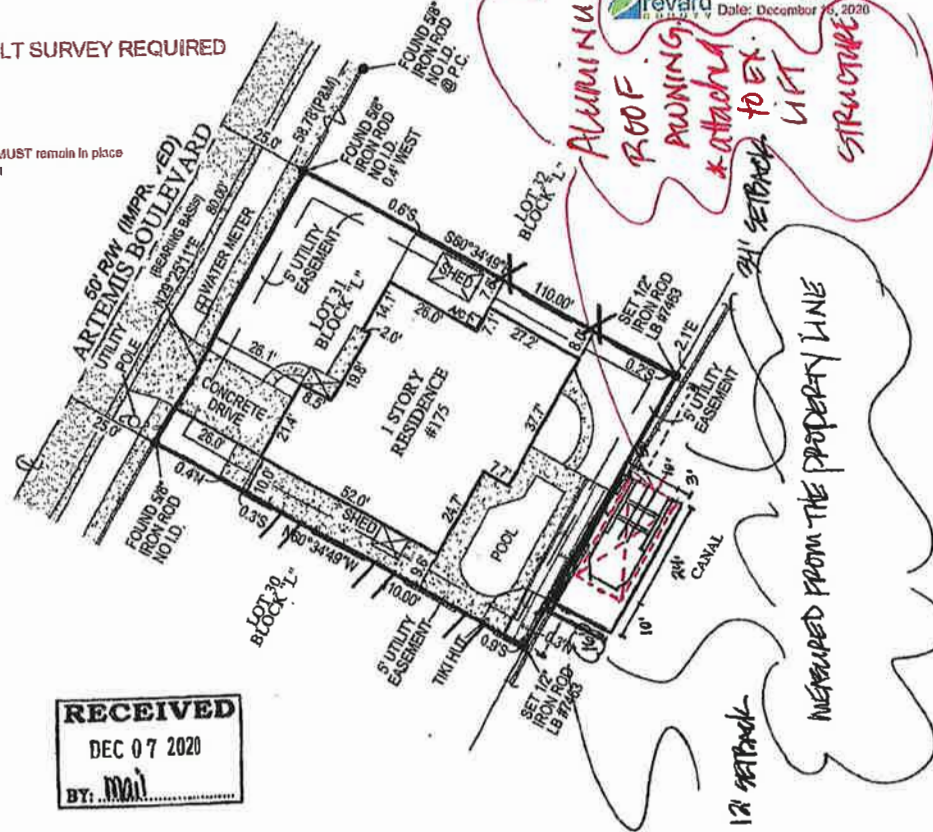
**RECEIVED**  
DEC 07 2020  
BY: *mail*

**NOTES:**

1. LEGAL DESCRIPTION PROVIDED BY CLIENT
2. NO SEARCH OF THE PUBLIC RECORD FOR THE PURPOSE OF ABSTRACTING TITLE WAS PERFORMED BY THIS OFFICE
3. NO SUBSURFACE IMPROVEMENTS WERE LOCATED AS PART OF THIS SURVEY
4. ALL ANGLES OR BEARINGS AND DISTANCES SHOWN HEREON ARE BOTH RECORDED AND MEASURED UNLESS OTHERWISE NOTED
5. SOME FEATURES MAY NOT BE AT SCALE IN ORDER TO SHOW DETAIL
6. THE BEARINGS SHOWN HEREON ARE BASED UPON THE WESTERLY PROPERTY LINE, HAVING A BEARING OF N29°25'11"E.

FLOOD ZONE: XAE  
COMMUNITY NUMBER: 125092  
PANEL: 12099C0340  
SUFFIX: G  
BASE FLOOD ELEVATION: 4.7 (NAVD88)  
FIRM DATE: 03-17-2014  
FIRM EFFECT/REV DATE: 03-17-2014

**\*APPROVED FOR CONSTRUCTION**  
Permit No. 20BC21103  
Date: December 14, 2020



SCALE: 1"=30'

VICINITY MAP  
NOT TO SCALE

**LEGEND**

A/C	AIR CONDITIONER
B.F.P.	BACKFLOW PREVENTER
C.B.S.	CONCRETE BLOCK STRUCTURE
E.	ELEVATION
F.F.	FINISHED FLOOR
I.D.	IDENTIFICATION
L.	LENGTH
L.B.	LICENSED BUSINESS
M.	MEASURED
N.A.V.D.	NORTH AMERICAN VERTICAL DATUM
N.G.V.D.	NATIONAL GEODETIC VERTICAL DATUM
O.R.S.	OFFICIAL RECORDS BOOK
P.	PLAT
P.S.M.	PROFESSIONAL SURVEYOR AND MAPPER
P.R.M.	PERMANENT REFERENCE MONUMENT
P.G.	PAGE
P.B.	PLAT BOOK
P.K.	PARKER KYLON NAIL
R.	RADIUS
C.L.	CENTERLINE
A.	AND
N.	NUMBER
Δ	DELTA OR CENTRAL ANGLE
C.	CONCRETE
CL.F.	CHAIN LINK FENCE
W.F.	WOOD FENCE
M.F.	MISCELLANEOUS FENCE

SURVEYORS CERTIFICATE:  
I HEREBY CERTIFY THAT THIS BOUNDARY SURVEY IS A  
TRUE AND CORRECT REPRESENTATION OF A SURVEY  
PREPARED UNDER MY DIRECTION. NOT VALID  
WITHOUT A RAISED EMBOSSED SEAL AND SIGNATURE.

(SIGNED)

*Kenneth J. Osborne*  
KENNETH J. OSBORNE  
PROFESSIONAL SURVEYOR AND MAPPER #6415

BOUNDARY SURVEY OF  
175 ARTEMIS BOULEVARD  
MERRITT ISLAND, FL. 32953  
PREPARED FOR  
JOSEPH COLLURA

C-19870  
05-24-2020  
1"=30'  
1 of 1

6250 N. MILITARY TRAIL  
SUITE 102  
WEST PALM BEACH, FL 33407  
www.compassurveying.net  
**COMPASS SURVEYING**  
PHONE: 561-640-4800 FAX: 561-640-0576  
L.B. 7463

PERMIT NO: 20BC21103

**GENERAL NOTES:**

1. THE PROJECT HAS BEEN DESIGNED IN ACCORDANCE WITH THE FLORIDA BUILDING CODE, 7TH EDITION (2020).
2. STRUCTURAL CALCULATIONS FOR WIND AND GRAVITY LOADS WERE PERFORMED.
3. FLORIDA ENGINEERING LLC IS NOT RESPONSIBLE FOR INSPECTIONS OR CONSTRUCTION SUPERVISION.

**ENGINEERING DESIGN CRITERIA**

1. BASIC WIND SPEED  $V(ASD) = 118$  MPH
2.  $V(ULT) = 150$  MPH
3. RISK CATEGORY = 1
4. EXPOSURE = D
5. DESIGN METHOD USED ASCE 7-10

**STANDARDS AND SPECIFICATIONS**

1. FLORIDA BUILDING CODE, 7TH EDITION (2020)
2. ALUMINUM DESIGN MANUAL, 2015 EDITION

**ALUMINUM SPECIFICATION**

1. ALUMINUM MEMBERS SHALL BE ALLOY 6061-T6 UNLESS NOTED ON PLANS

**FASTENERS AND SPECIFICATIONS**

1. ALL CONNECTORS, SCREWS AND BOLTS SHALL BE STAINLESS STEEL OR PLATED.
2. ALL CONNECTORS SHALL HAVE A WASHER AT THE HEAD AND A NUT.

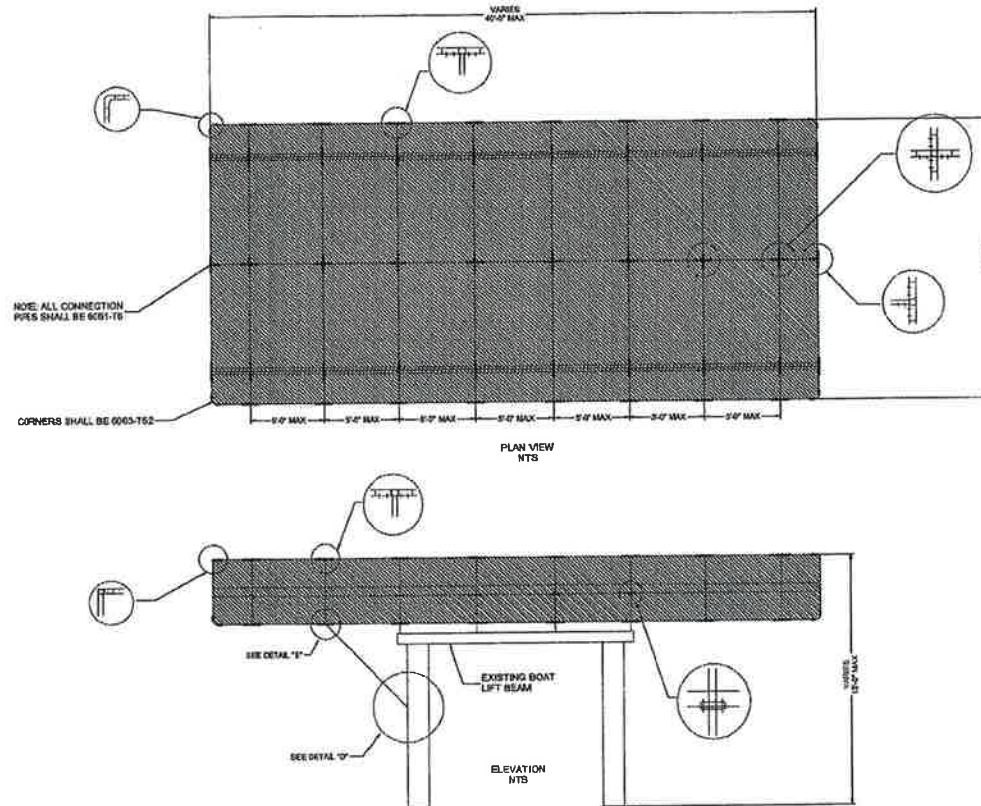
**SHADE FABRIC**

1. FABRIC SHALL MEET ALL FIRE RATINGS AND AWNING CONTRACTOR SHALL SUPPLY FLAME CERTIFICATE
2. SHADE FABRIC SHALL MEET THE REQUIREMENTS OF ASTM E-84 AND NFPA 701

FABRIC SHALL BE REMOVED IF WIND SPEEDS EXCEED 75 MPH

**GENERAL NOTES:**

1. EVERY TOP TO HAVE 8" x 3.5" VINYL DECAL "WARNING: TOP MUST BE REMOVED WHEN WINDS EXCEED 75 MPH"
2. ENTIRE STRUCTURE SHALL MEET MINIMUM ZONING SETBACK REQUIREMENTS.
3. MAX. PILE SPACING IS 13'
4. THIS PLAN IS FOR A 10K OR LESS ALUMINUM OR STEEL BOAT LIFT MOUNTED ON A MIN. OF 8" SIZE PILING
5. THIS DESIGN COMPLIES WITH THE FLORIDA BUILDING CODE 7TH EDITION (2020) CH. 31 SPECIAL CONSTRUCTION, INCLUDING SECTION 3106 AWNINGS & CANOPIES.
6. MAXIMUM WALL HEIGHT 60"
7. MAXIMUM PROJECTION WITH BRACE 18'
8. MAXIMUM PROJECTION WITHOUT BRACE 12'
9. CONNECTION DETAIL MINIMUM OF 2 SCREW PER CONNECTION SIZE WILL BE 1/4" X 1" HEX-HEAD SELF-DRILLING 410 STAINLESS STEEL.
10. ROOF COVERINGS TO BE FASTENED TO FRAME USING 8" BUNGEE BALL CORD EVERY 18"
11. THE OVERHANG SHALL NOT BE MORE THAN 4'-2"
12. THE ANGLE BRACE IS SHOWN AT 45 DEG. AND THIS CAN VARY BY +/- 15 DEG.
13. THE BOAT LIFT COVER IS BOLTED TO THE BOAT LIFT USING 3/8" X 1-1/2" STAINLESS STEEL.
14. THE VINYL COVER IS ATTACHED TO THE FRAME USING BUNGEE CORDS. IN THE EVENT OF A HURRICANE, THE VINYL WILL BE REMOVED IF WINDS EXCEED 75 MPH.



**INSTALLATION INSTRUCTIONS:**

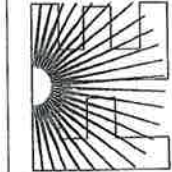
- TOOLS REQUIRED:** CORDLESS DRILL WITH 3/8" NUT DRIVER AND 9/16" WRENCH AND RATCHET, HACKSAW FOR CANTILEVERS.
1. INSTALL BOTH SIDE RAILS ON BOATLIFT BEAMS ON BOTH SIDES. DO NOT TIGHTEN DOWN MOUNTING BRACKETS. LEAVE LOOSE UNTIL LATER.
  2. PLACE 6 OR 8 RAFTER POLES IN SIDE RAIL, 3 OR 4 ON EACH SIDE OVER BOATLIFT BEAM. NUMBER WILL DEPEND ON SIZE OF TOP.
  3. SLIDE SIDE RAILS SO THAT THE RAFTER POLES LINE UP. ONCE EVERYTHING IS IN LINE, TIGHTEN MOUNTING BRACKETS.
  4. PUT IN CANTILEVER POLES DOWN TO PILING. MAKE A MARK AT PILING, THEN CUT AND REMOVE WHERE NECESSARY. DO THIS TO BOTH SIDES. SOME SMALL UNITS DO NOT HAVE CANTILEVER.
  5. PUT CANTILEVER POLES BACK IN AND APPLY UPWARD PRESSURE UNTIL SIDE RAIL IS STRAIGHT AND NOT SAGGING. PUT 3/8" STAINLESS STEEL LAG BOLT INTO PILING OR DOCK THROUGH CANTILEVER BRACKETS.
  6. PUT REMAINING RAFTER POLES IN THE SIDE RAILS. WITH YOUR DRILL, PUT INT SELF-TAPPING SCREWS USING THE 3/8" NUT DRIVER.
  7. PLACE 4-WAY FITTING AT THE TOP OF THE MIDDLE RAFTER POLE. PLACE 3-WAYS ON EACH END.
  8. RUN THE TOP RAIL THROUGH THE 4-WAY FITTING INTO EACH END FITTING.
  9. USING 1/4" STAINLESS STEEL SELF-TAPPING SCREWS, SCREW IN THE RAFTER POLES AND THE TOP RAIL WHERE ALL FITTINGS ARE.
  10. PLACE THE VINYL TOP ON THE TOP RAIL IN THE MIDDLE AND UNFOLD FORWARD AND AFT UNTIL COMPLETELY UNFOLDED. BRING THE OUTER EDGE STRAP AROUND THE PIPE. PUT SHOCK CORD THROUGH THE GROMMET AND PULL IT OVER PLASTIC BALL.
  11. LOWER EACH SIDE OF THE TOP AND DO ALL FOUR CORNERS FIRST. THIS WILL GET THE TOP ON STRAIGHT. THEN FINISH BOTH SIDES.
  12. ADJUST AND FASTEN SIDE RAILS TO MOUNTING BRACKETS ON BOATLIFT BEAMS USING REMOVABLE 1/4" BOLTS. CANTILEVER POLES FASTEN TO PILING OR DOCKS USING REMOVABLE 1/4" BOLT.
  13. REMOVAL OF COVER WILL BE THE REVERSE OF THESE INSTRUCTIONS.

This item has been electronically signed and sealed by Craig E. Gunderson, P.E. on the date below using a Digital Signature. Printed copies of this document are not considered signed and sealed and the signature must be verified on any electronic copies.



Digitally signed by  
Craig E Gunderson  
Date:  
2020.12.10  
11:54:56 -05'00'

FLORIDA ENGINEERING LLC  
4161 TAMAMI TRAIL, UNIT 101  
PORT CHARLOTTE, FLORIDA 33952  
(941) 391-5980  
www.flengineeringllc.com



CA CERT. #30782

PROJECT NO. 2033745

CONTRACTOR:  
COASTLINE BOATLIFT  
COVERS

PROJECT DESCRIPTION:  
MASTER PLAN (1)

DESIGN DATE:		12/4/2020
REVISION 1:	DATE	PAGE <b>1</b>
REVISION 2:	DATE	
SCALE:	NTS	

**SITE SPECIFIC CERTIFICATION REQUIREMENT:**

THIS PLAN IS INTENDED TO BE A MASTER PLAN FOR CHARLOTTE COUNTY, FLORIDA. IT IS NECESSARY TO SUBMIT A LETTER FOR EACH LOCATION FROM FLORIDA ENGINEERING LLC, THE ENGINEER OF RECORD.

ALL FITTINGS USE  
1/4" STAINLESS STEEL  
SELF-TAPPING SCREWS



PERMIT NO: 20BC21103



Building Code Compliance  
**REVIEWED**  
By Terry Talbert

**REVISED**  
12/11/20

# PLAN VIEW



APPROVED FOR CONSTRUCTION  
Permit No. 20BC21103  
Date: December 16, 2020

SQUARE FOOTAGE:

3' x 24' = 72  
4' x 24' = 96  
10' x 16' = 160  
11' x 24' (slip) = 264  
**592 sq TOTAL**

2x8' STRINGERS

2' OC.  
w/ 20d st. NAILS

8"-9" Butt Piling  
(Deck)

2x8 STRINGER SUPPORTS  
w/ 20d st. NAILS

EXISTING SEAWALL

8000 lb.  
LIFT

16' measured from  
the property  
line

10" Butt Piling  
(LIFT)

PROPERTY  
LINE

80' LOT

2x8 DECKING  
w/ 16d st. NAILS  
OR  
#10 st. SCREWS

NOTE: DECK BOARDS OF NEW DECK + WALKWAY  
WILL BE INCORPORATED INTO EXISTING SEAWALL  
CAP (EX. CAP BOARDS REMOVED + REPLACED SO  
ITS THE SAME ELEVATION.)