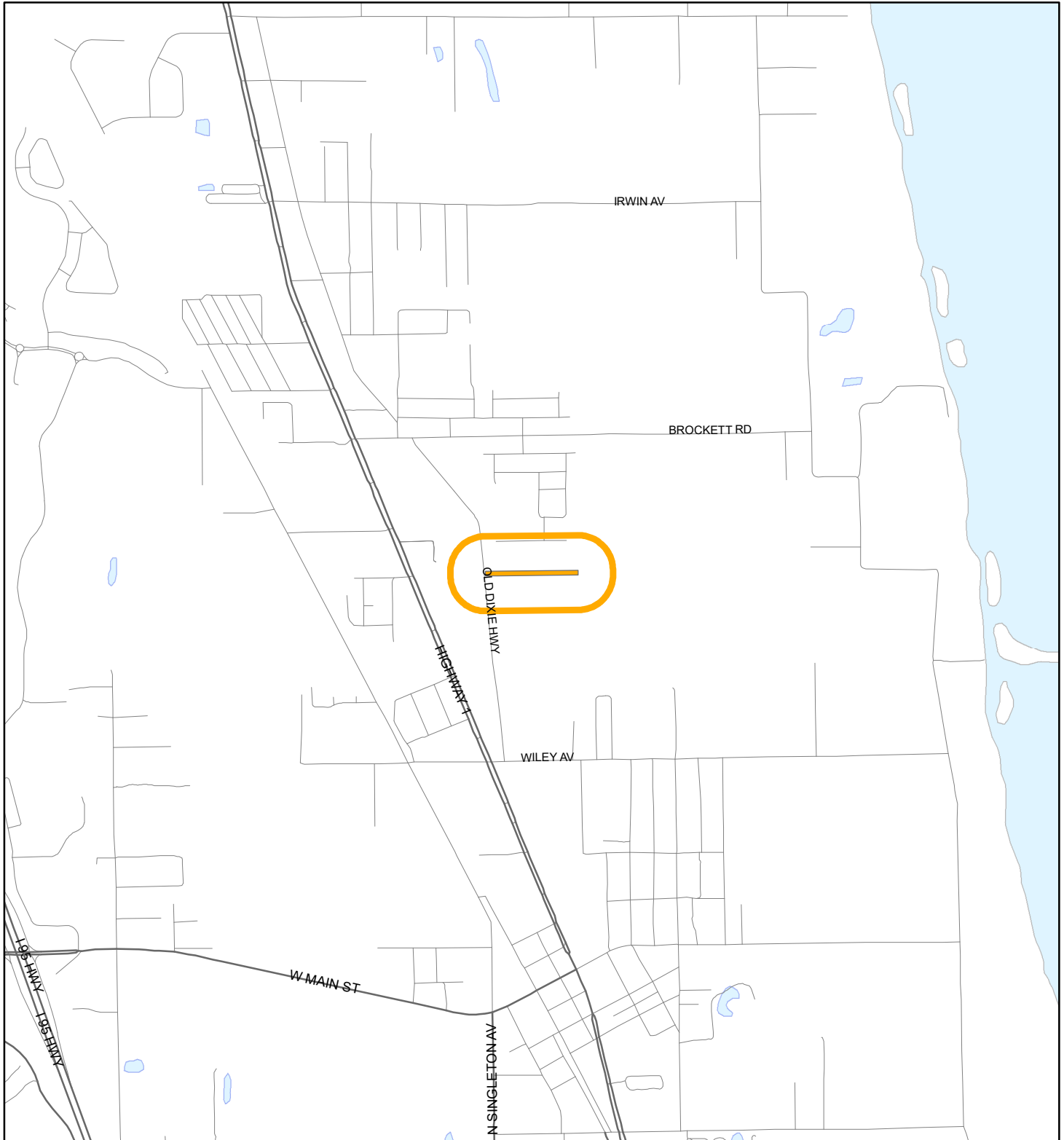


LOCATION MAP

KIRK, ROBERT CLAY

22SS00007 Small Scale Amendment 22S.10





1:24,000 or 1 inch = 2,000 feet

Buffer Distance: 500 feet

This map was compiled from recorded documents and does not reflect an actual survey. The Brevard County Board of County Commissioners does not assume responsibility for errors or omissions hereon.

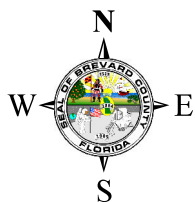
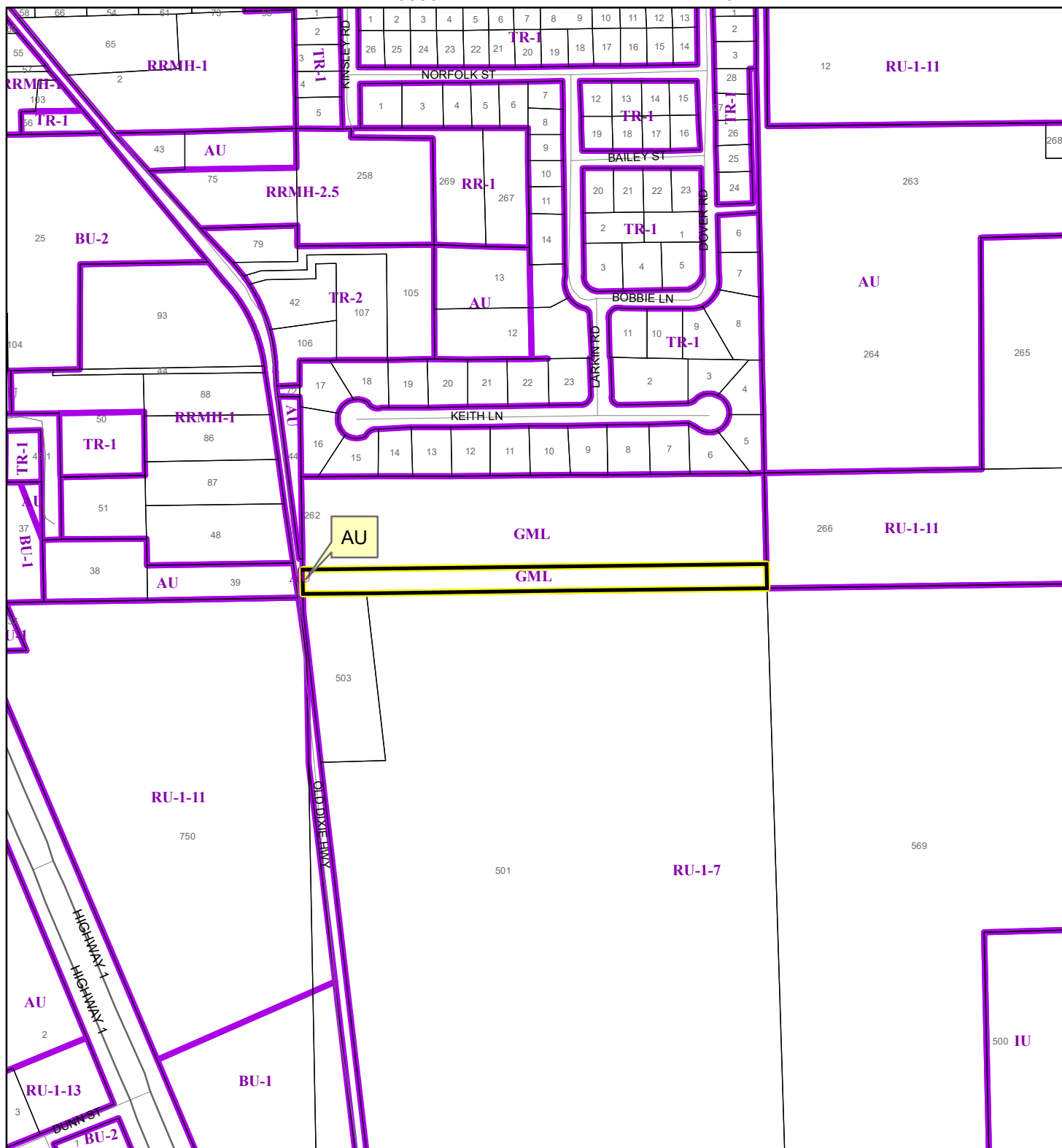
Produced by BoCC - GIS Date: 6/13/2022

 Buffer
 Subject Property

ZONING MAP

KIRK, ROBERT CLAY


22SS00007 Small Scale Amendment 22S.10



1:4,800 or 1 inch = 400 feet

This map was compiled from recorded documents and does not reflect an actual survey. The Brevard County Board of County Commissioners does not assume responsibility for errors or omissions hereon.

Produced by BoCC - GIS Date: 6/13/2022

 Subject Property

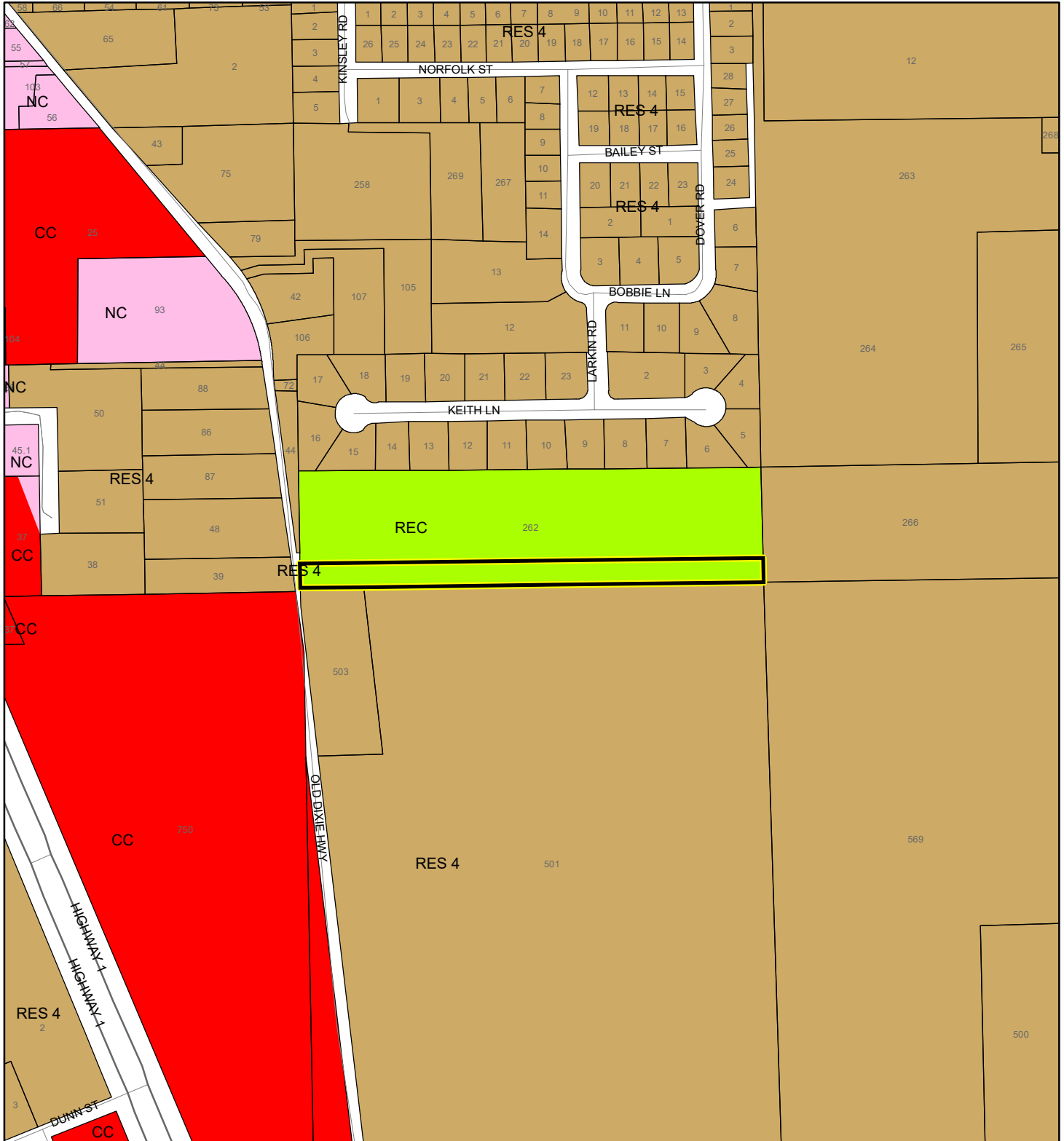
 Parcels

 Zoning



FUTURE LAND USE MAP

KIRK, ROBERT CLAY

22SS00007 Small Scale Amendment 22S.10



1:4,800 or 1 inch = 400 feet

 Subject Property
 Parcels

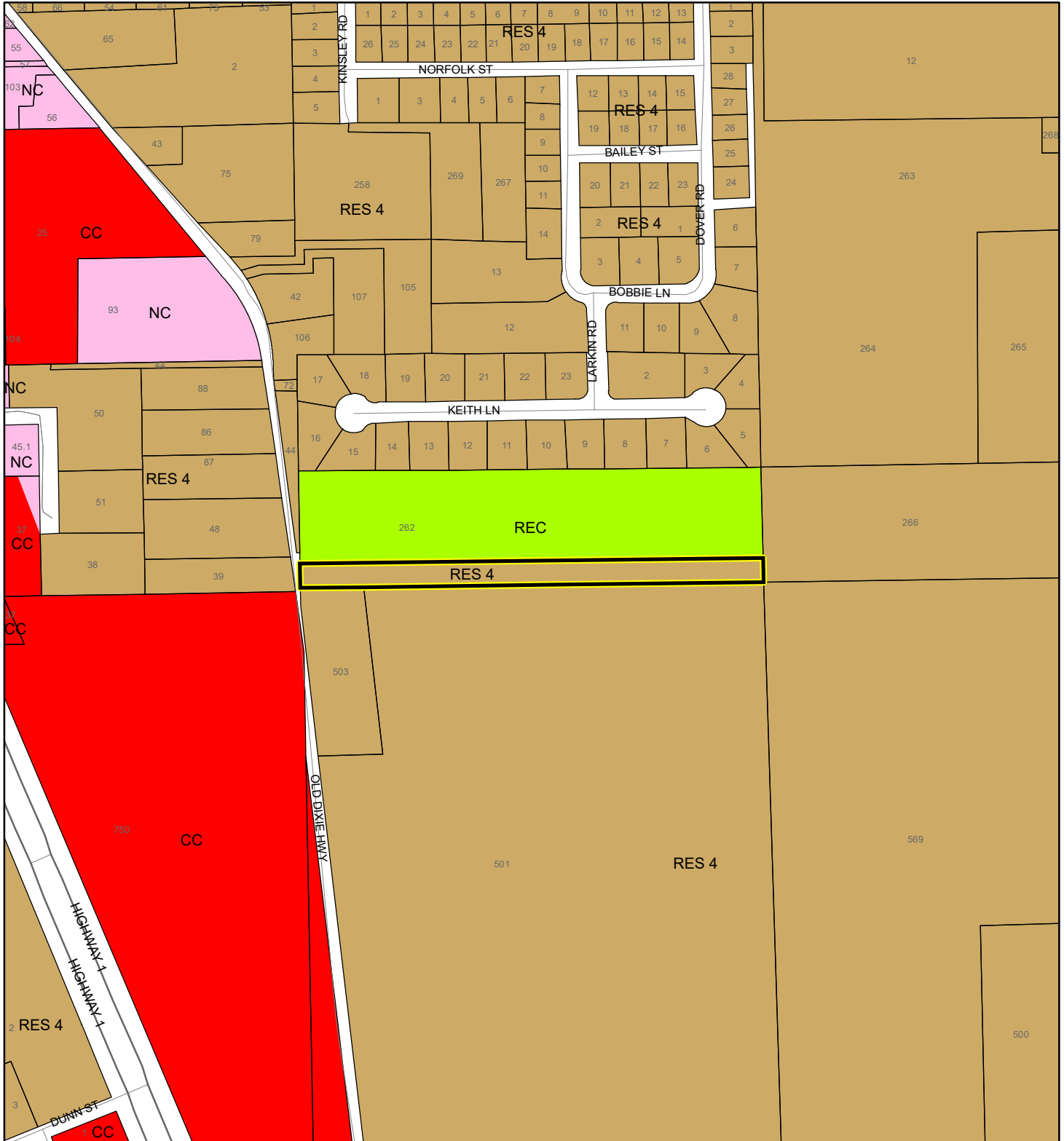
This map was compiled from recorded documents and does not reflect an actual survey. The Brevard County Board of County Commissioners does not assume responsibility for errors or omissions hereon.

Produced by BoCC - GIS Date: 6/13/2022



PROPOSED FUTURE LAND USE MAP

KIRK, ROBERT CLAY

22SS00007 Small Scale Amendment 22S.10



1:4,800 or 1 inch = 400 feet

 Subject Property
 Parcels

This map was compiled from recorded documents and does not reflect an actual survey. The Brevard County Board of County Commissioners does not assume responsibility for errors or omissions hereon.

Produced by BoCC - GIS Date: 6/13/2022

AERIAL MAP

KIRK, ROBERT CLAY

22SS00007 Small Scale Amendment 22S.10



1:2,400 or 1 inch = 200 feet

PHOTO YEAR: 2021

This map was compiled from recorded documents and does not reflect an actual survey. The Brevard County Board of County Commissioners does not assume responsibility for errors or omissions hereon.

Produced by BoCC - GIS Date: 6/13/2022

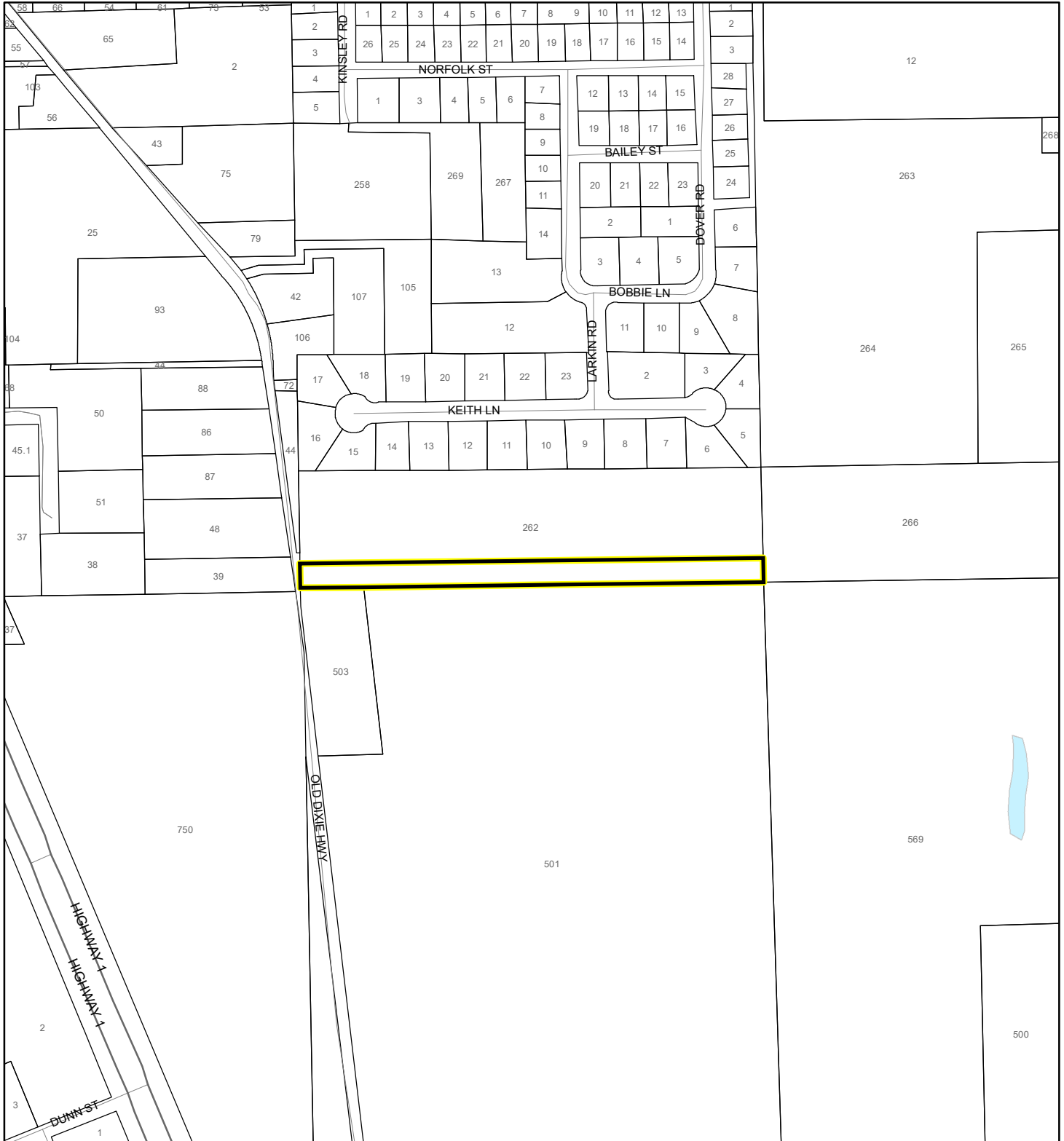
 Subject Property

 Parcels

NWI WETLANDS MAP

KIRK, ROBERT CLAY

22SS00007 Small Scale Amendment 22S.10






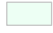

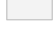

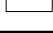


1:4,800 or 1 inch = 400 feet

This map was compiled from recorded documents and does not reflect an actual survey. The Brevard County Board of County Commissioners does not assume responsibility for errors or omissions hereon.

Produced by BoCC - GIS Date: 6/13/2022

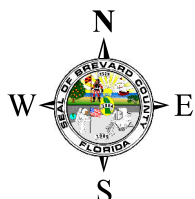
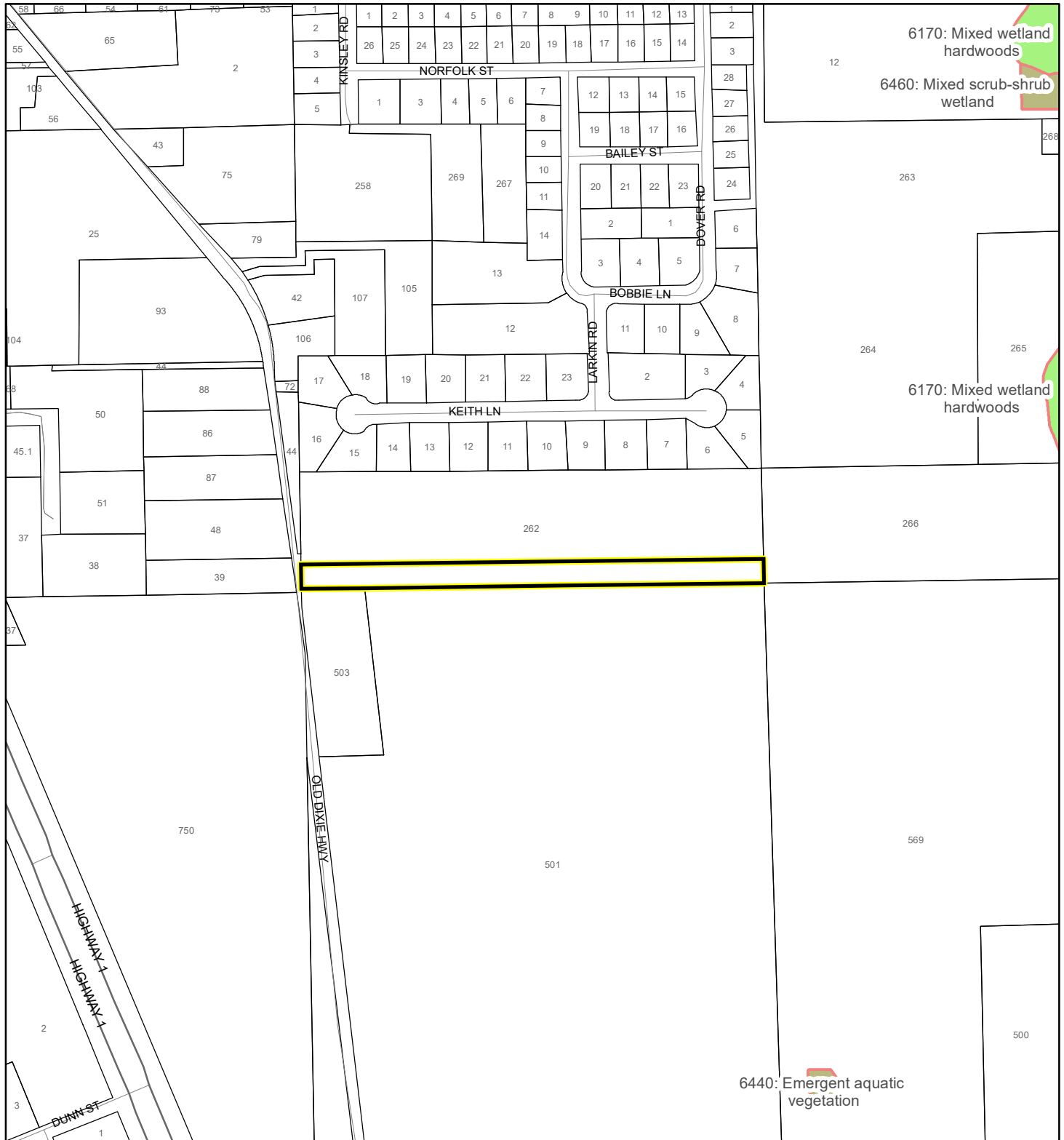
National Wetlands Inventory (NWI)

 Estuarine and Marine Deepwater	 Freshwater Pond
 Estuarine and Marine Wetland	 Lake
 Freshwater Emergent Wetland	 Other
 Freshwater Forested/Shrub Wetland	 Riverine
	 Subject Property
	 Parcels

SJRWMD FLUCCS WETLANDS - 6000 Series MAP

KIRK, ROBERT CLAY

22SS00007 Small Scale Amendment 22S.10



1:4,800 or 1 inch = 400 feet

This map was compiled from recorded documents and does not reflect an actual survey. The Brevard County Board of County Commissioners does not assume responsibility for errors or omissions hereon.

Produced by BoCC - GIS Date: 6/13/2022

SJRWMD FLUCCS WETLANDS

- Wetland Hardwood Forests - Series 6100
- Wetland Coniferous Forest - Series 6200
- Wetland Forested Mixed - Series 6300
- Vegetated Non-Forested Wetlands - Series 6400
- Non-Vegetated Wetland - Series 6500

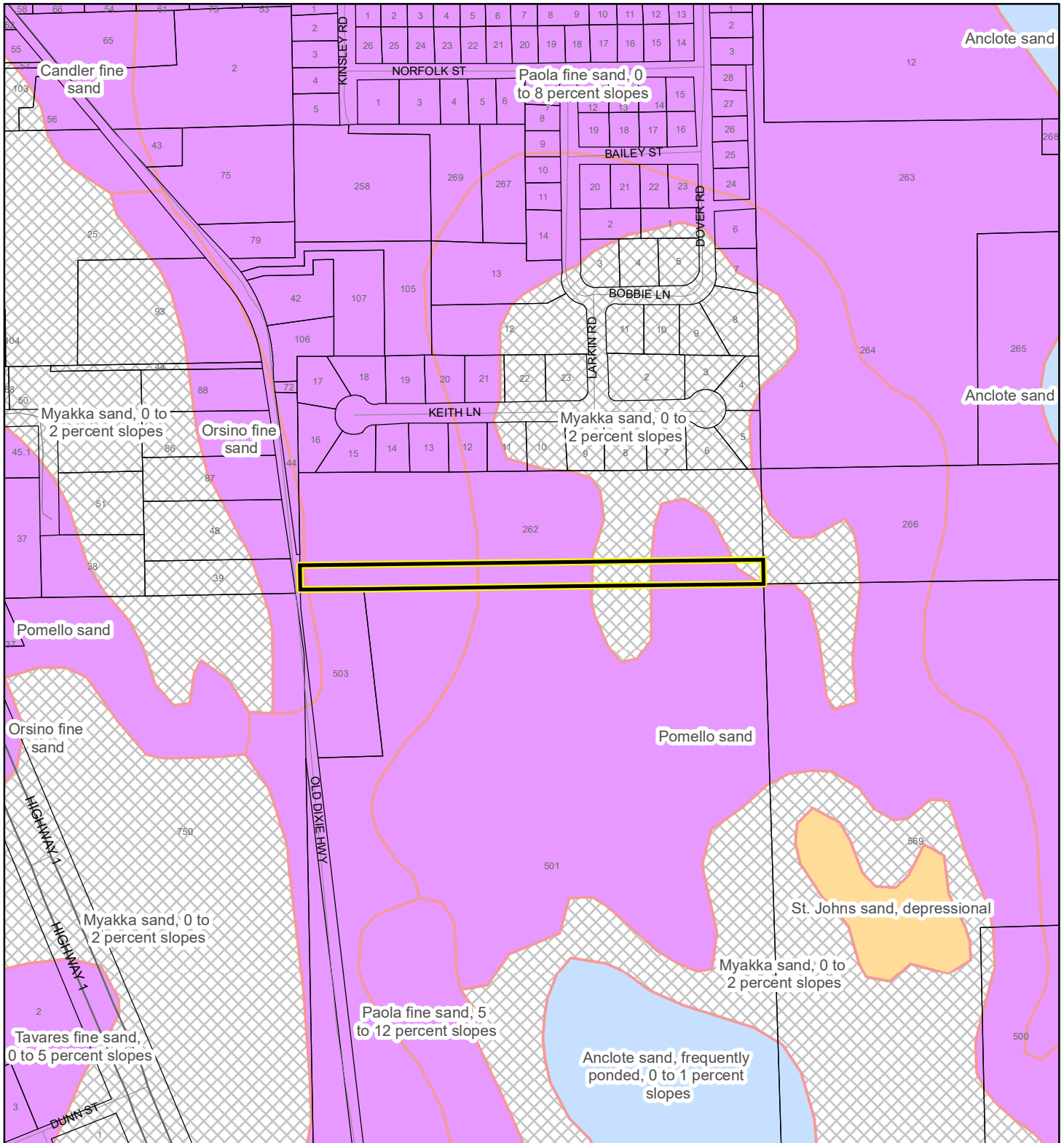
Subject Property

Parcels

USDA SCSSS SOILS MAP

KIRK, ROBERT CLAY

22SS00007 Small Scale Amendment 22S.10



1:4,800 or 1 inch = 400 feet

This map was compiled from recorded documents and does not reflect an actual survey. The Brevard County Board of County Commissioners does not assume responsibility for errors or omissions hereon.

Produced by BoCC - GIS Date: 6/13/2022

USDA SCSSS Soils

- Aquifer and Hydric
- Aquifer
- Hydric
- None

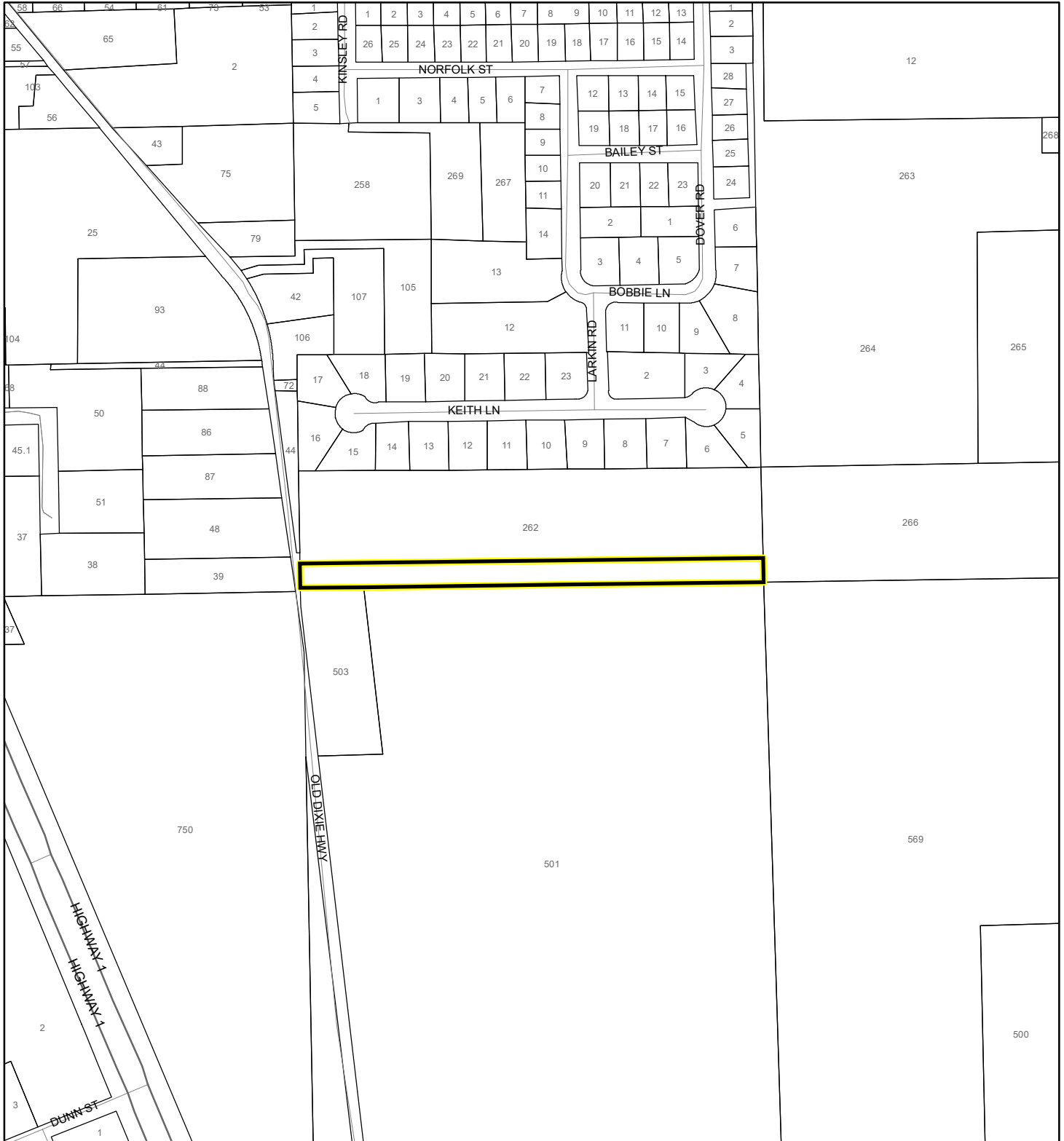
Subject Property

Parcels

FEMA FLOOD ZONES MAP

KIRK, ROBERT CLAY

22SS00007 Small Scale Amendment 22S.10



1:4,800 or 1 inch = 400 feet

This map was compiled from recorded documents and does not reflect an actual survey. The Brevard County Board of County Commissioners does not assume responsibility for errors or omissions hereon.

Produced by BoCC - GIS Date: 6/13/2022

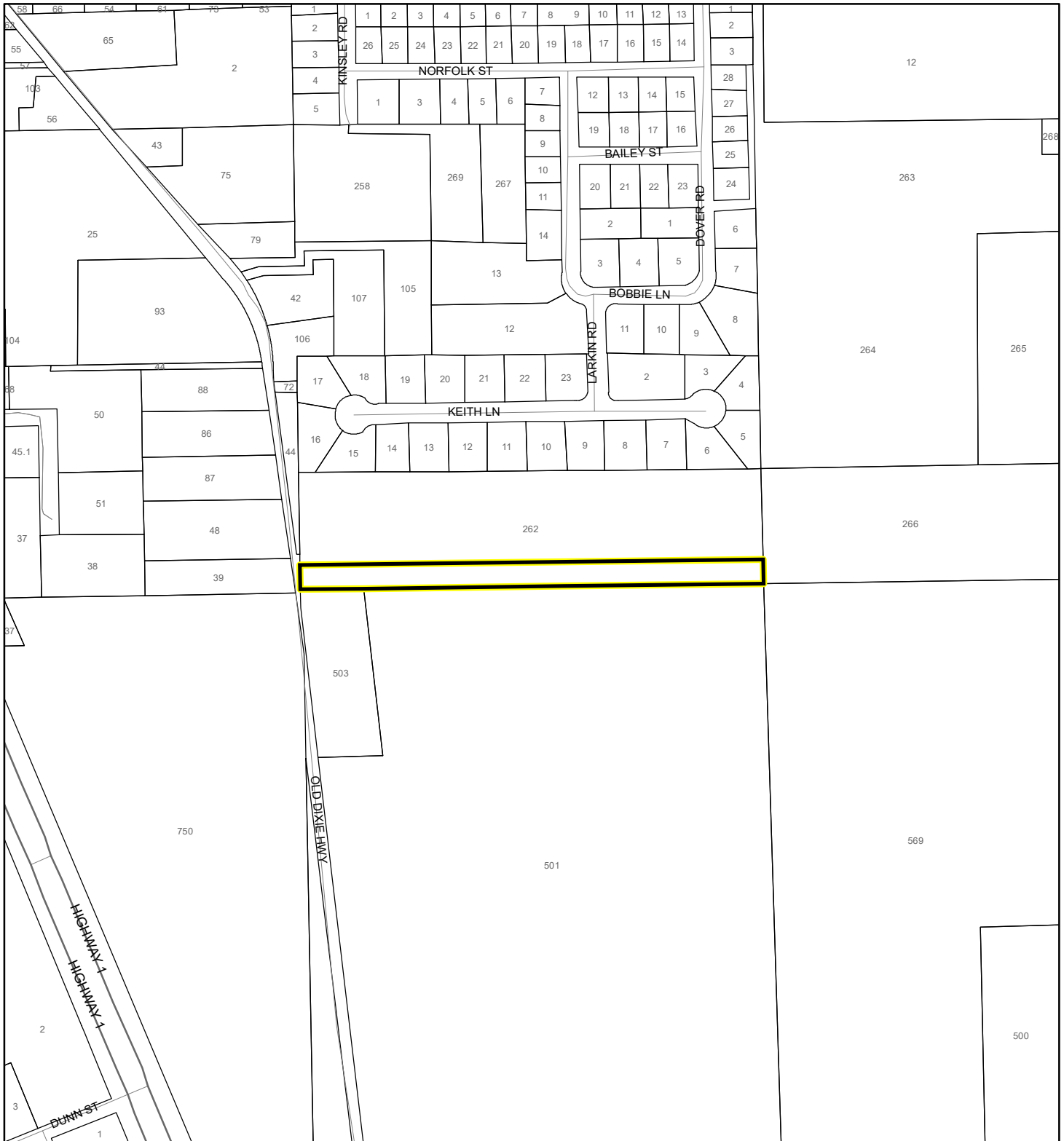
FEMA Flood Zones

A	AO	X
AE	Open Water	
AH	VE	
Subject Property	Parcels	

COASTAL HIGH HAZARD AREA MAP

KIRK, ROBERT CLAY

22SS00007 Small Scale Amendment 22S.10



1:4,800 or 1 inch = 400 feet

This map was compiled from recorded documents and does not reflect an actual survey. The Brevard County Board of County Commissioners does not assume responsibility for errors or omissions hereon.

Produced by BoCC - GIS Date: 6/13/2022

 Subject Property

 Parcels

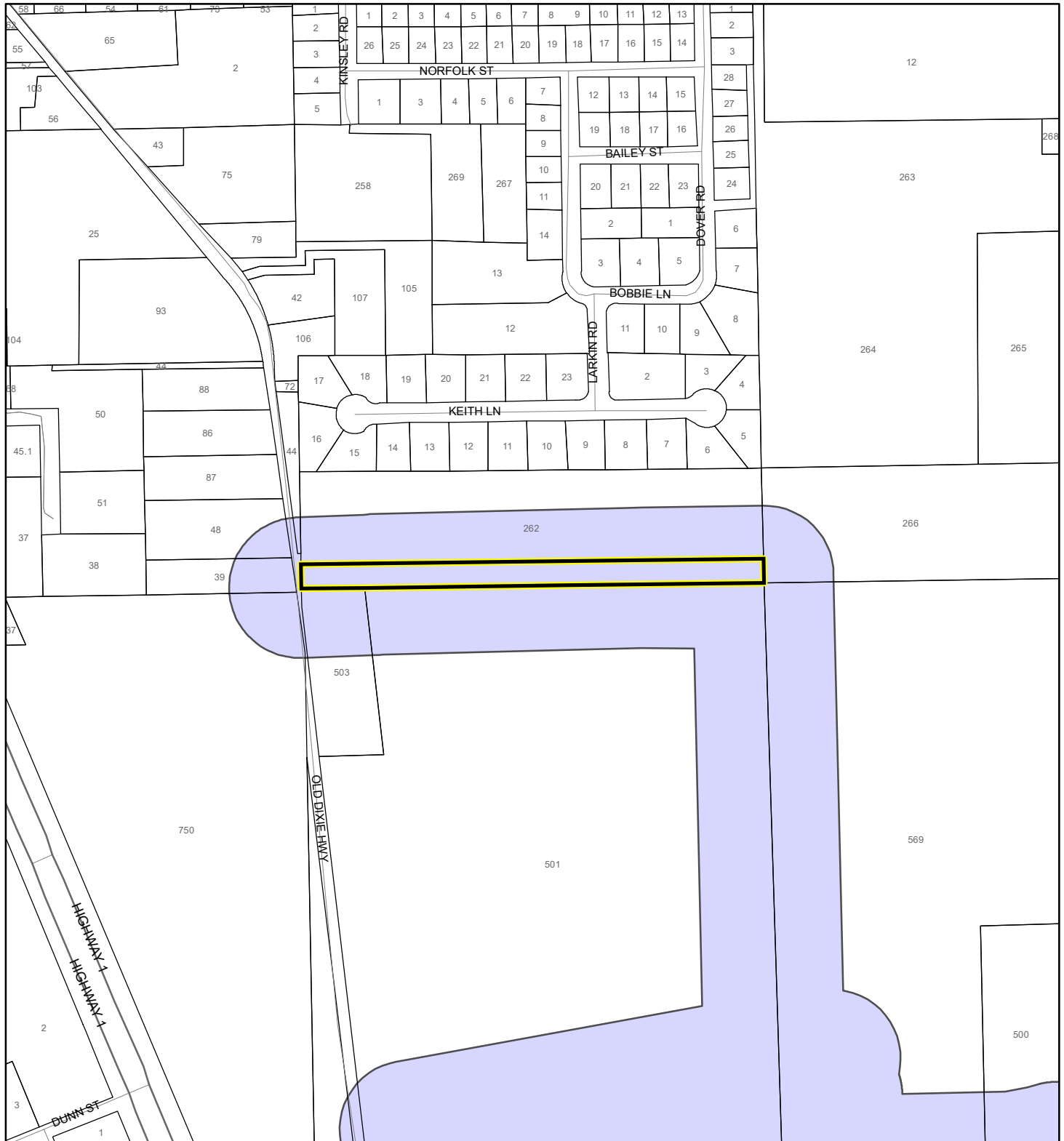
Coastal High Hazard Area

 SurgeZoneCat1

INDIAN RIVER LAGOON SEPTIC OVERLAY MAP

KIRK, ROBERT CLAY

22SS00007 Small Scale Amendment 22S.10




1:4,800 or 1 inch = 400 feet

This map was compiled from recorded documents and does not reflect an actual survey. The Brevard County Board of County Commissioners does not assume responsibility for errors or omissions hereon.

Produced by BoCC - GIS Date: 6/13/2022

 Subject Property

 Parcels

Septic Overlay

 40 Meters

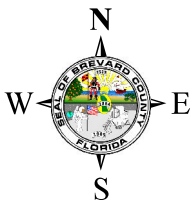
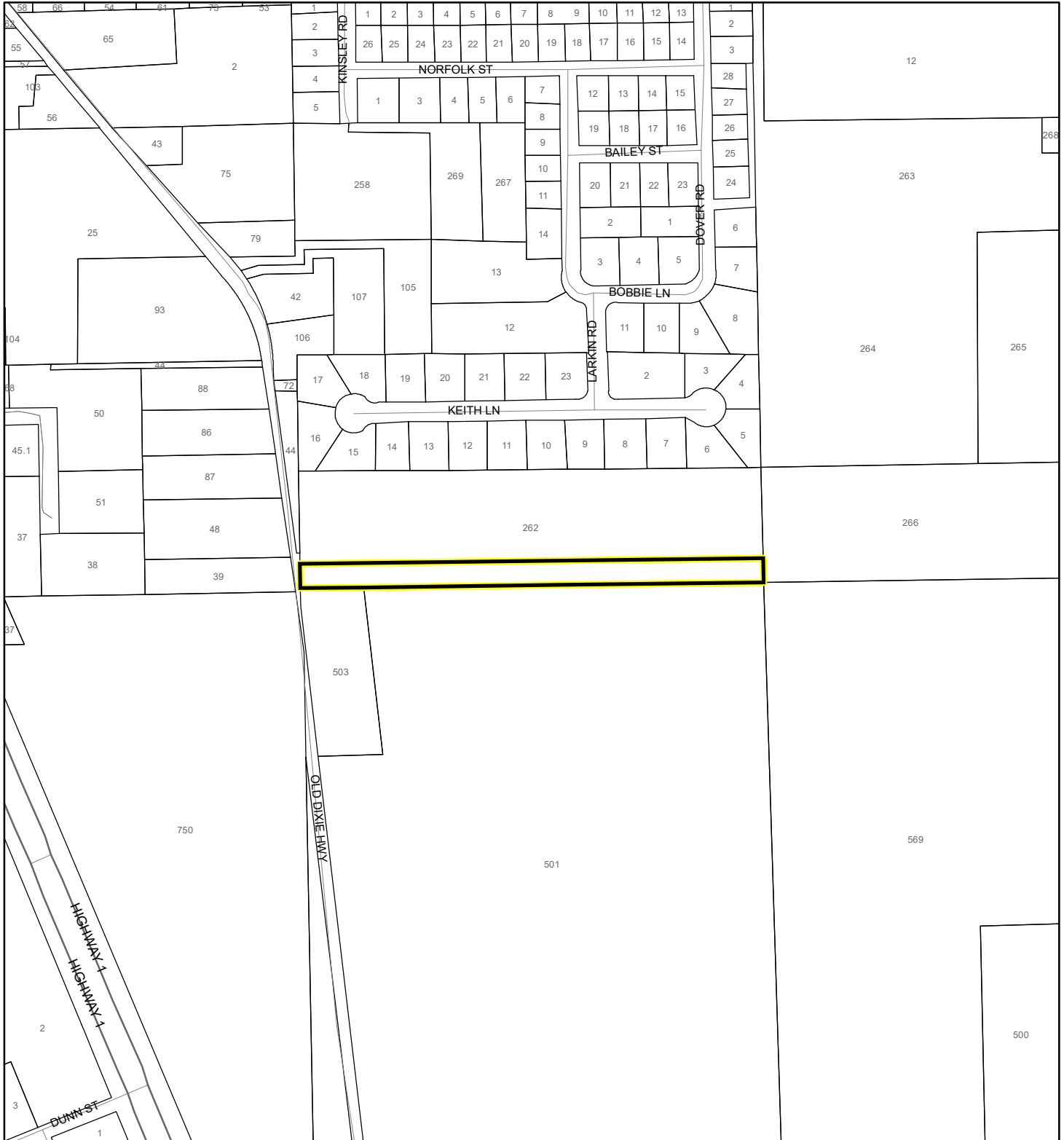
 60 Meters

 All Distances

EAGLE NESTS MAP

KIRK, ROBERT CLAY

22SS00007 Small Scale Amendment 22S.10



1:4,800 or 1 inch = 400 feet

This map was compiled from recorded documents and does not reflect an actual survey. The Brevard County Board of County Commissioners does not assume responsibility for errors or omissions hereon.

Produced by BoCC - GIS Date: 6/13/2022

 Subject Property

 Parcels

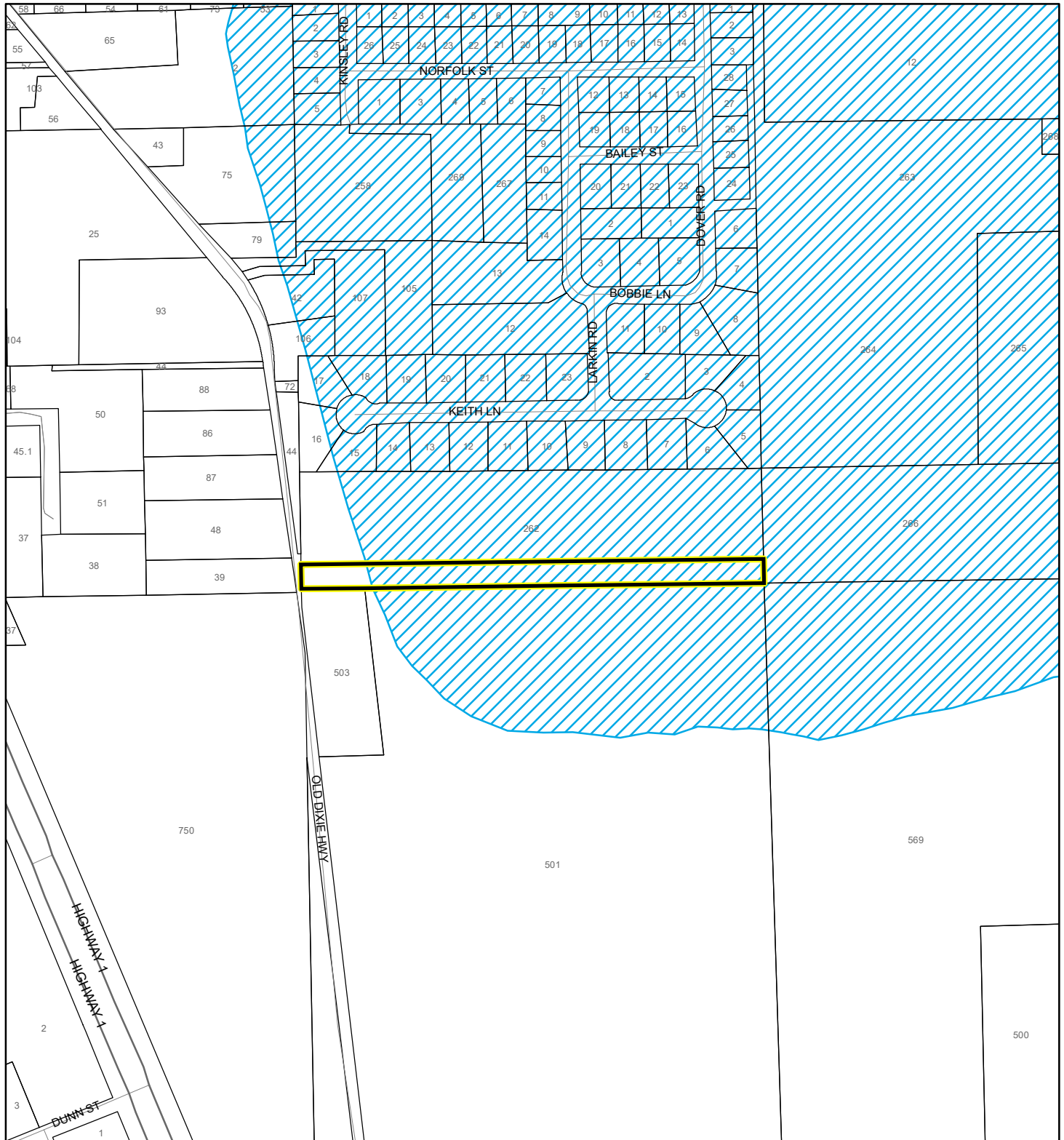


Eagle Nests
FWS 2010

SCRUB JAY OCCUPANCY MAP

KIRK, ROBERT CLAY

22SS00007 Small Scale Amendment 22S.10



1:4,800 or 1 inch = 400 feet

This map was compiled from recorded documents and does not reflect an actual survey. The Brevard County Board of County Commissioners does not assume responsibility for errors or omissions hereon.

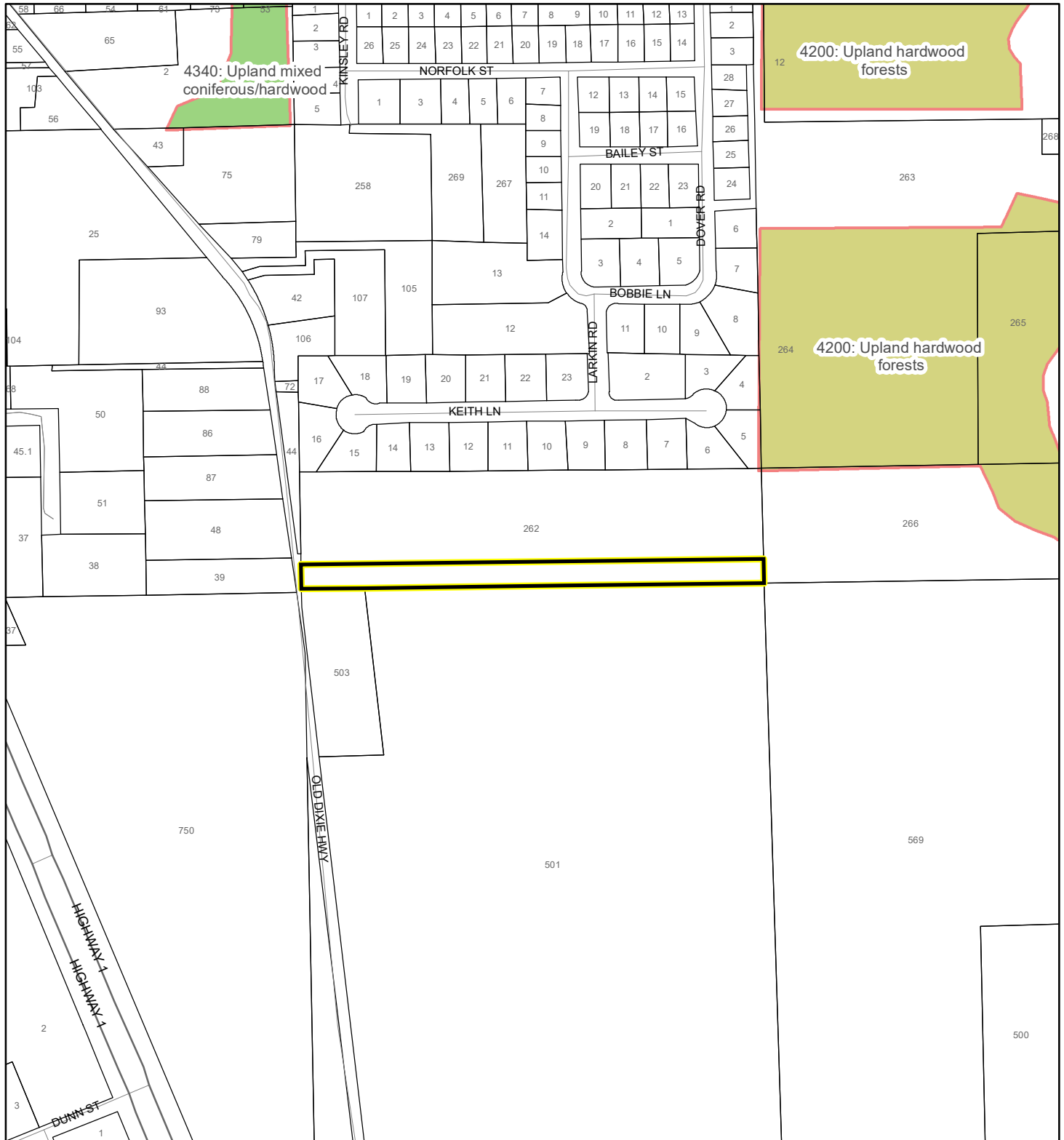
Produced by BoCC - GIS Date: 6/13/2022

- Subject Property
- Parcels
- Scrub Jay Occupancy

SJRWMD FLUCCS UPLAND FORESTS - 4000 Series MAP

KIRK, ROBERT CLAY

22SS00007 Small Scale Amendment 22S.10



1:4,800 or 1 inch = 400 feet

This map was compiled from recorded documents and does not reflect an actual survey. The Brevard County Board of County Commissioners does not assume responsibility for errors or omissions hereon.

Produced by BoCC - GIS Date: 6/13/2022

SJRWMD FLUCCS Upland Forests

- Upland Coniferous Forest - 4100 Series
- Upland Hardwood Forest - 4200 Series
- Upland Mixed Forest - 4300 Series
- Tree Plantations - 4400 Series

Subject Property Parcels